



# Cultural Resources Project Screening Form

File Number:  PIN:  Route:  County:

Project Name:

Type 1: Resurfacing, installation of fencing, signs, pavement markings, traffic signals, passenger shelters, railroad warning devices, installation of rumble strips, and landscaping

Project Type

Type 2: Bridge replacements on alignment, construction of bicycle/pedestrian facilities, and intersection improvements

Type 3: Projects that do not fall into Type 1 and Type 2 categories (e.g. road widening)

## Comments

This project replaces the load restricted bridge carrying S-277 over a Branch of Big Beaver Dam Creek. A small amount of new right-of-way (ROW) may be required. The area of potential effects (APE) was established as a 100 foot wide corridor straddling the roadway for a distance of 700 feet to the north and 700 feet to the south of the bridge, widening to 200 feet at the bridge. The architectural APE was a 300 ft buffer around the archaeological APE. Background review found that no cultural resources are recorded within or nearby the APE. A cultural resource survey was conducted on 2/13/2019. Survey consisted of a pedestrian reconnaissance of the project area augmented by the excavation of shovel test pits (STP) at 15 and 30 meter intervals. A total of 26 STPs were excavated. Nine potential STP locations were examined but not excavated due to disturbed ground surface or the presence of hydric soils. Four STPs were positive for historic period artifacts. Two historic archaeological sites (38NE1377 and 38NE1378) and one historic isolated find were recorded. Five new architectural resources were also recorded (Site Nos 1982, 1983, 1983.001, 1984, and 1984.001). All of the newly recorded resources were assessed as not NRHP eligible. No further investigations are recommended.

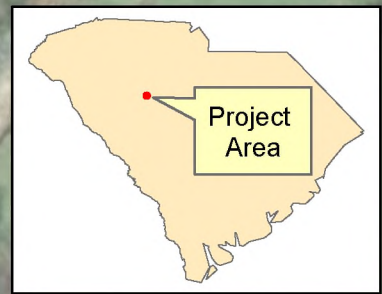
Effect Determination:





\*SHPO consultation is required for all Type 3 projects and any project with a No Adverse or Adverse Effect Determination.

This screening form was developed to satisfy documentation requirements for Type I and Type II projects under a Programmatic Agreement between the Federal Highway Administration, the South Carolina State Historic Preservation Office, the US Army Corps of Engineers, and the South Carolina Department of Transportation. For Type I and Type II projects that have no effect on historic properties, the completion of this screening form with supporting documentation (e.g. ArchSite Map) provides evidence of FHWA and SCDOT's compliance with Section 106 of the National Historic Preservation Act.

Prepared by:

Review Date:



-  Archaeological APE
-  Negative STP
-  Unexcavated STP
-  Positive STP

February 22, 2019

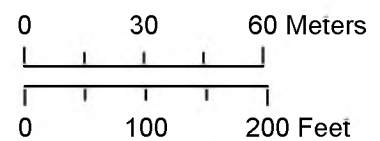


## Load Restricted Bridge Newberry County

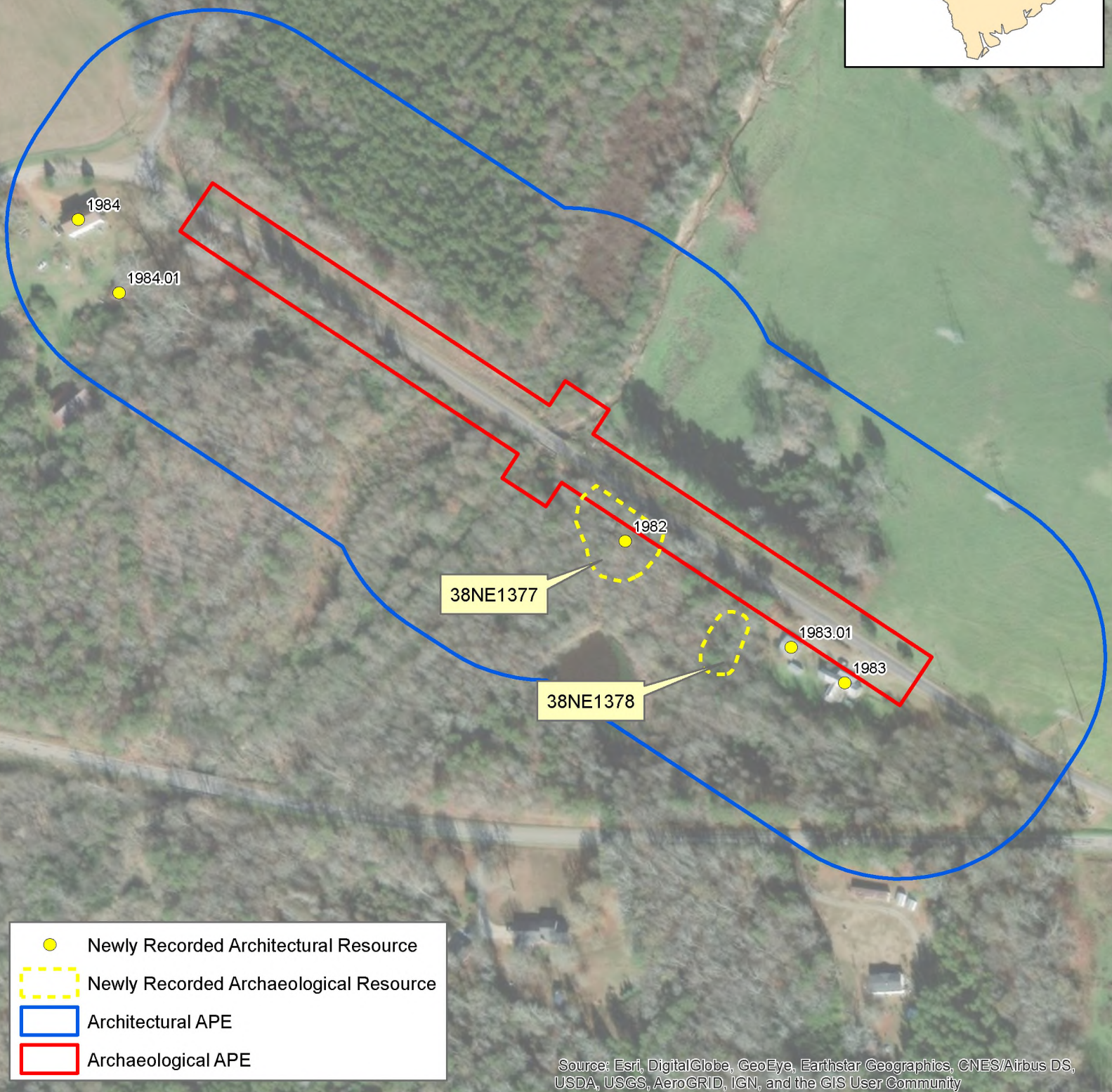
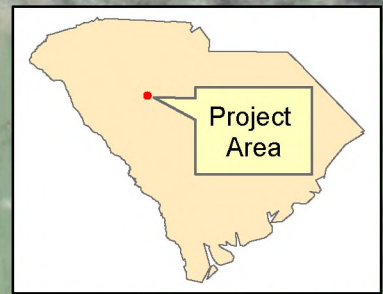
S-277 Over Branch  
of Big Beaver Dam Creek

Shovel Test Map

Project ID: P038067







February 28, 2019



**Load Restricted Bridge**  
**Newberry County**

**S-277 Over Branch  
of Big Beaver Dam Creek**

Newly Recorded Resources

Project ID: P038067

