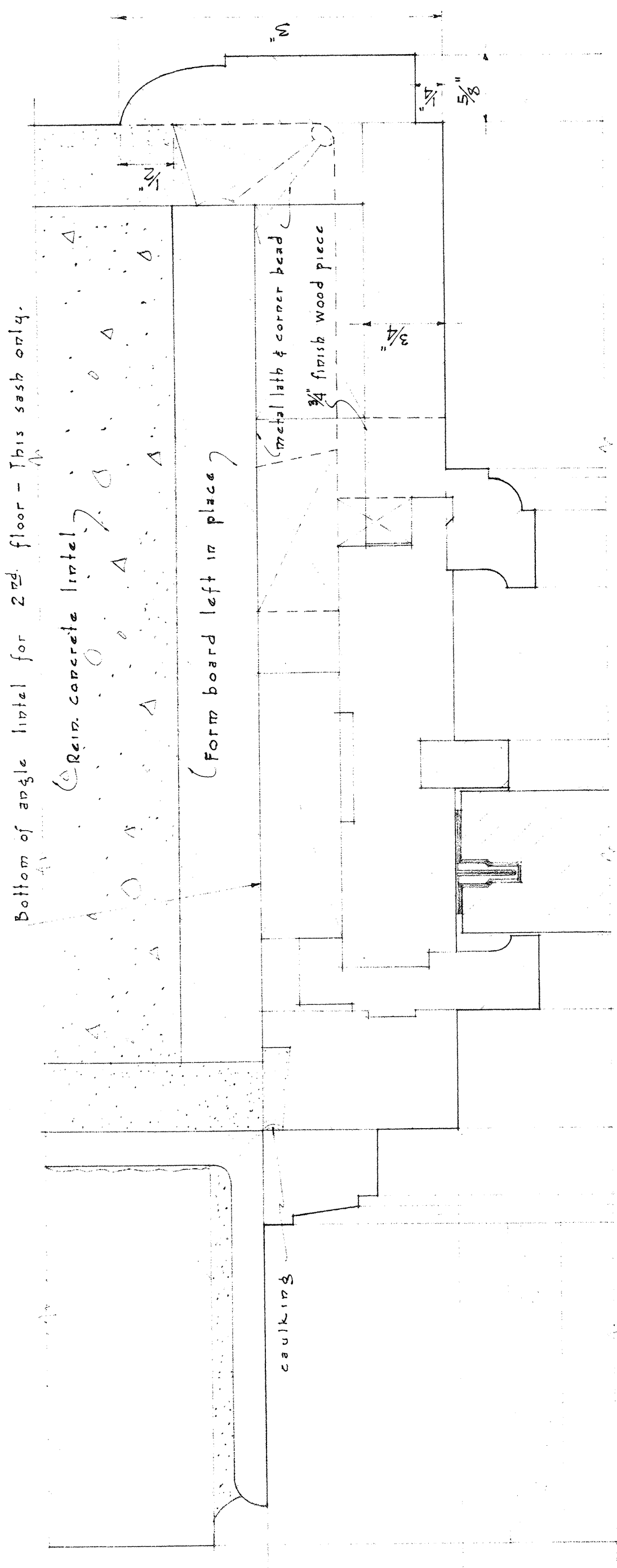
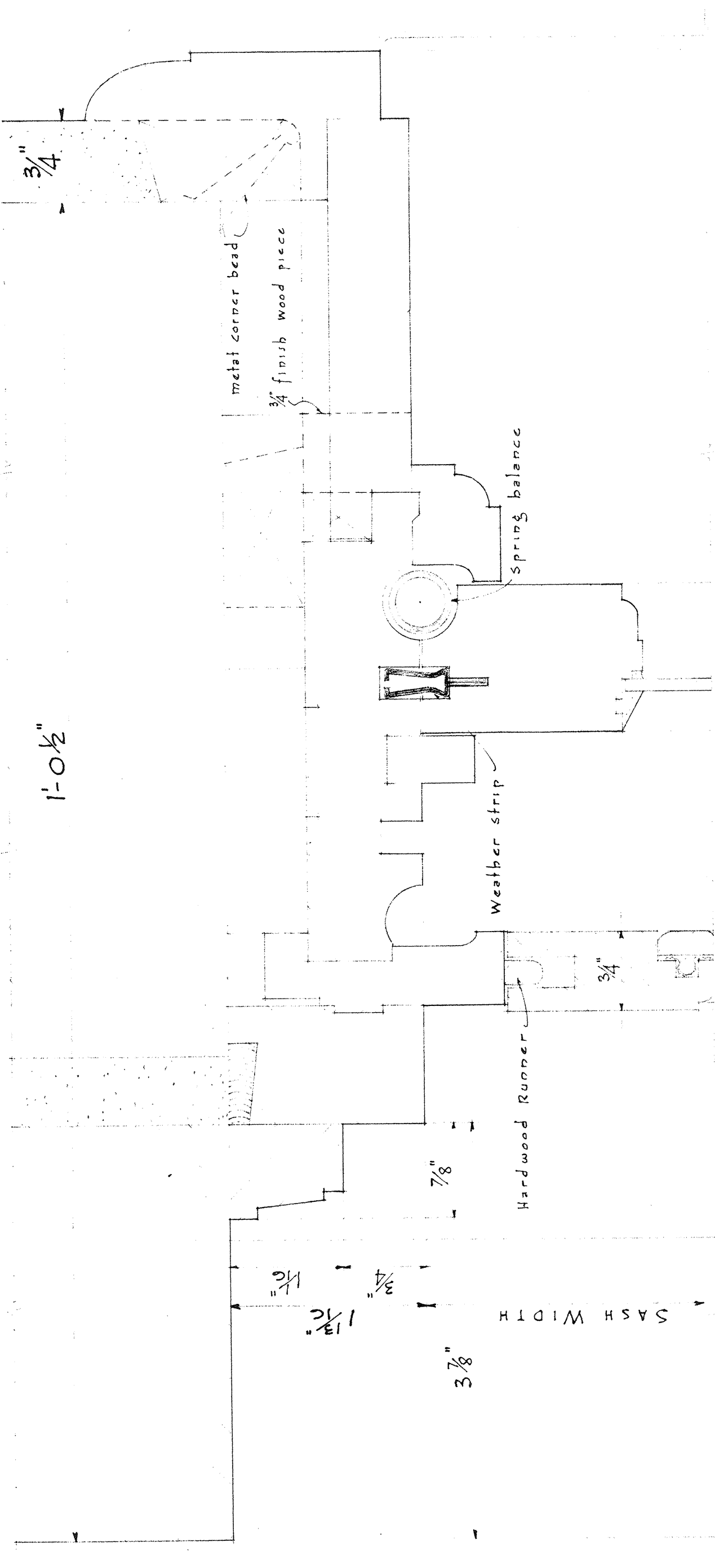


Bottom of angle lintel for 2nd floor - This sash only.



HEAD (1st floor only - see other detail for 2nd floor)

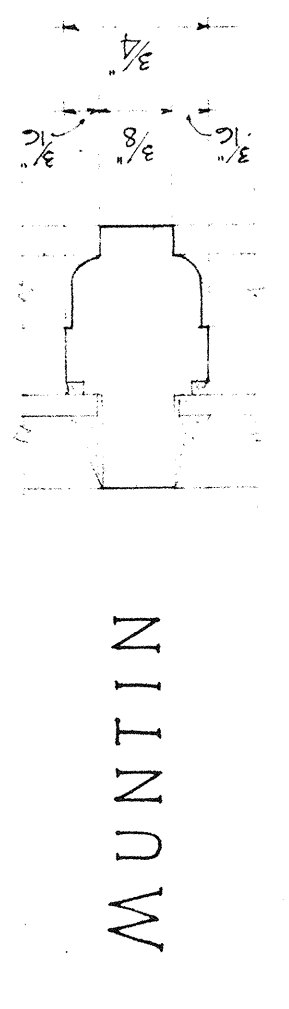


5'-0" SASH HEIGHT

4'-6" SASH HEIGHT

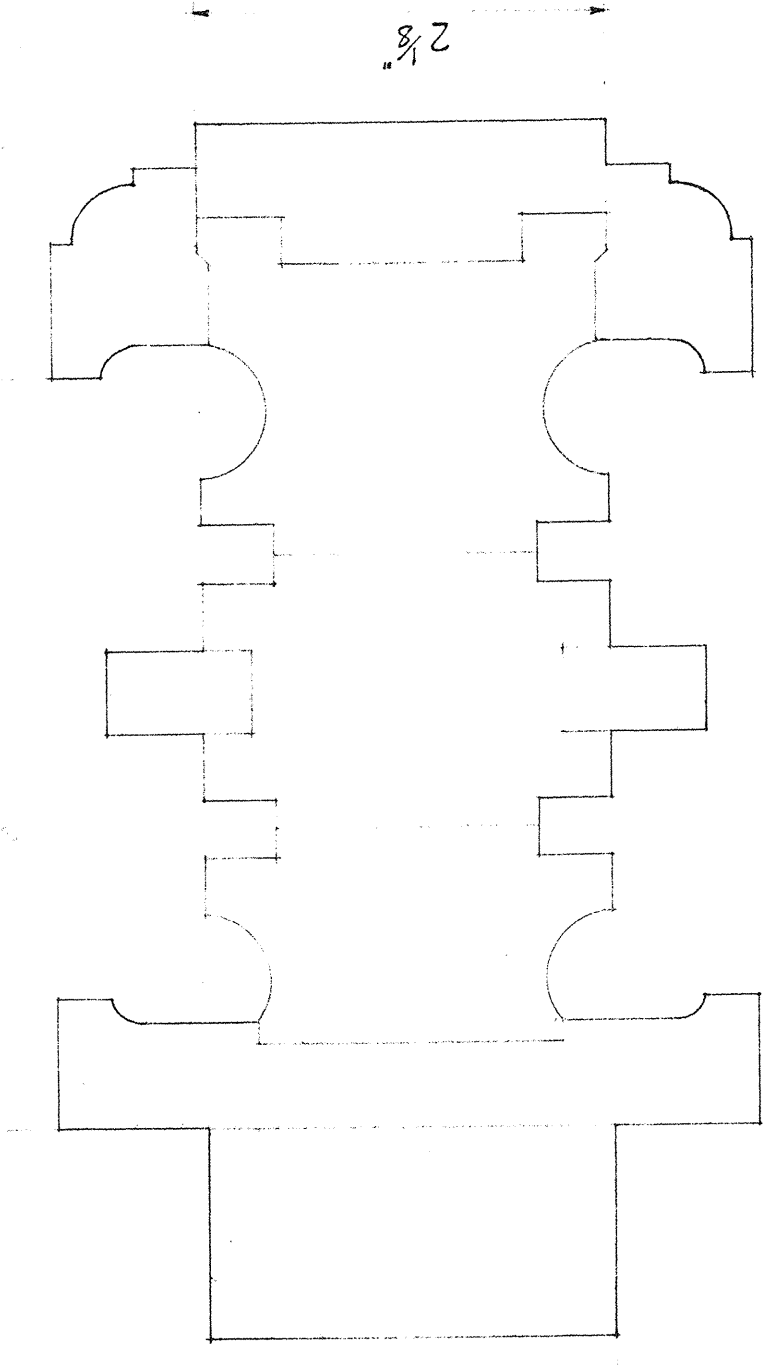
3'-0" SASH HEIGHT

JAMB

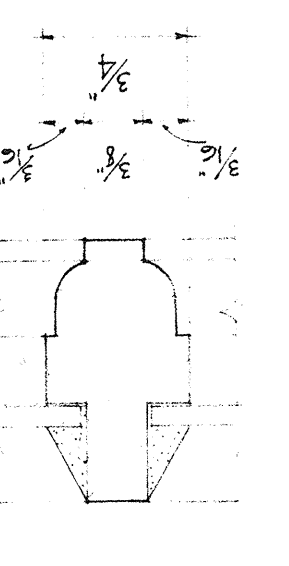


MUNTIN

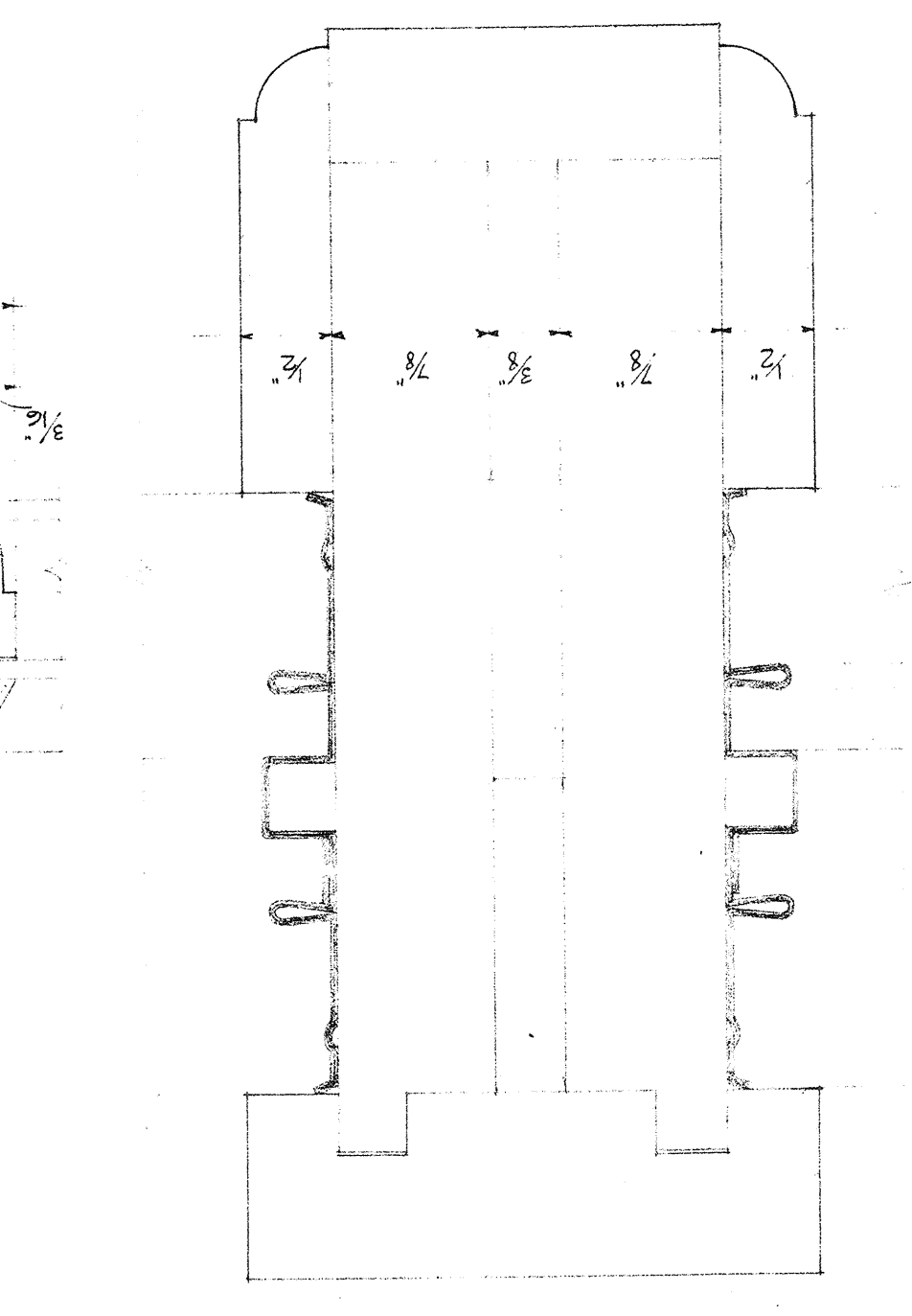
MULLION



MUNTIN



MUNTIN

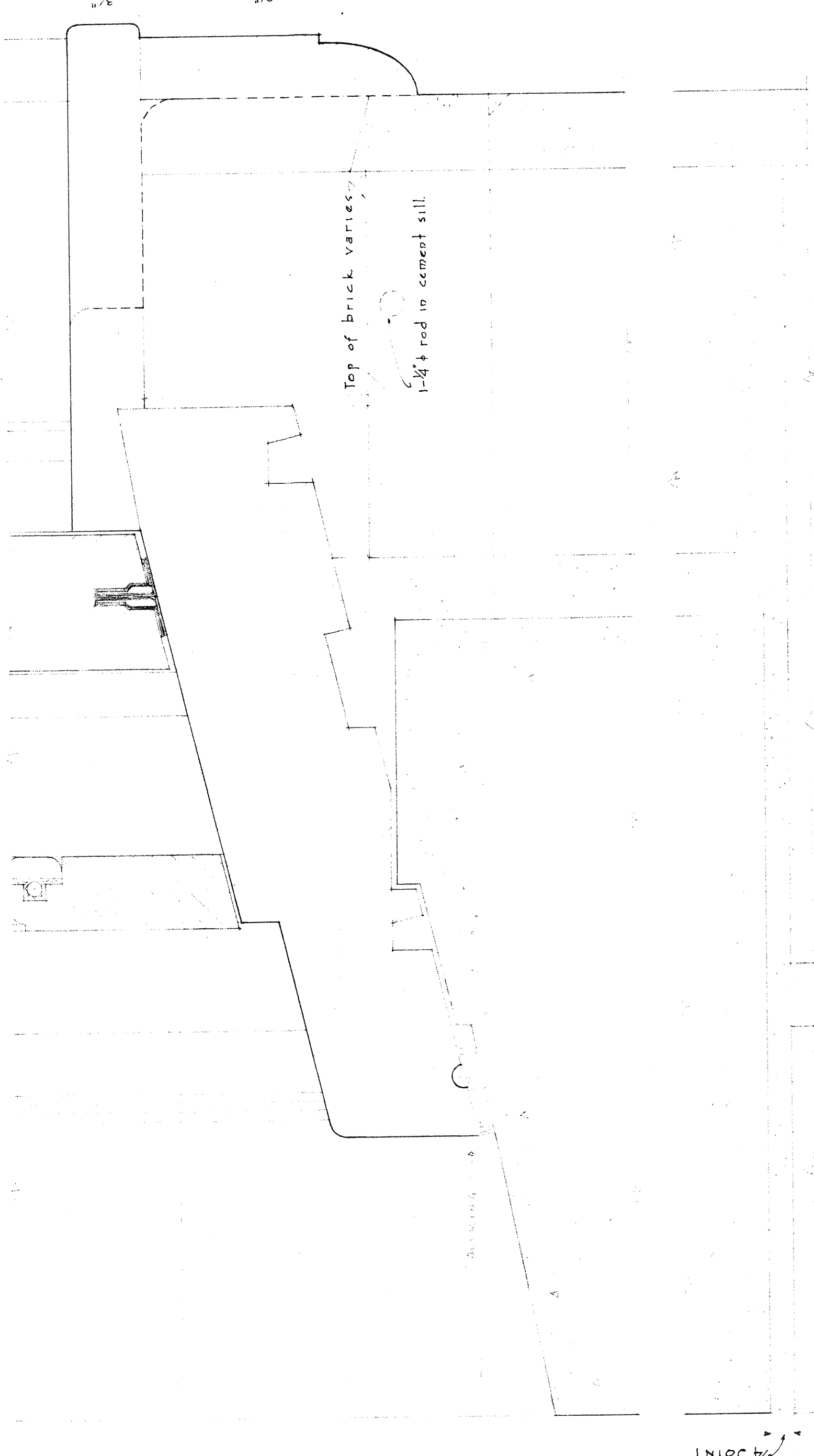


SASH

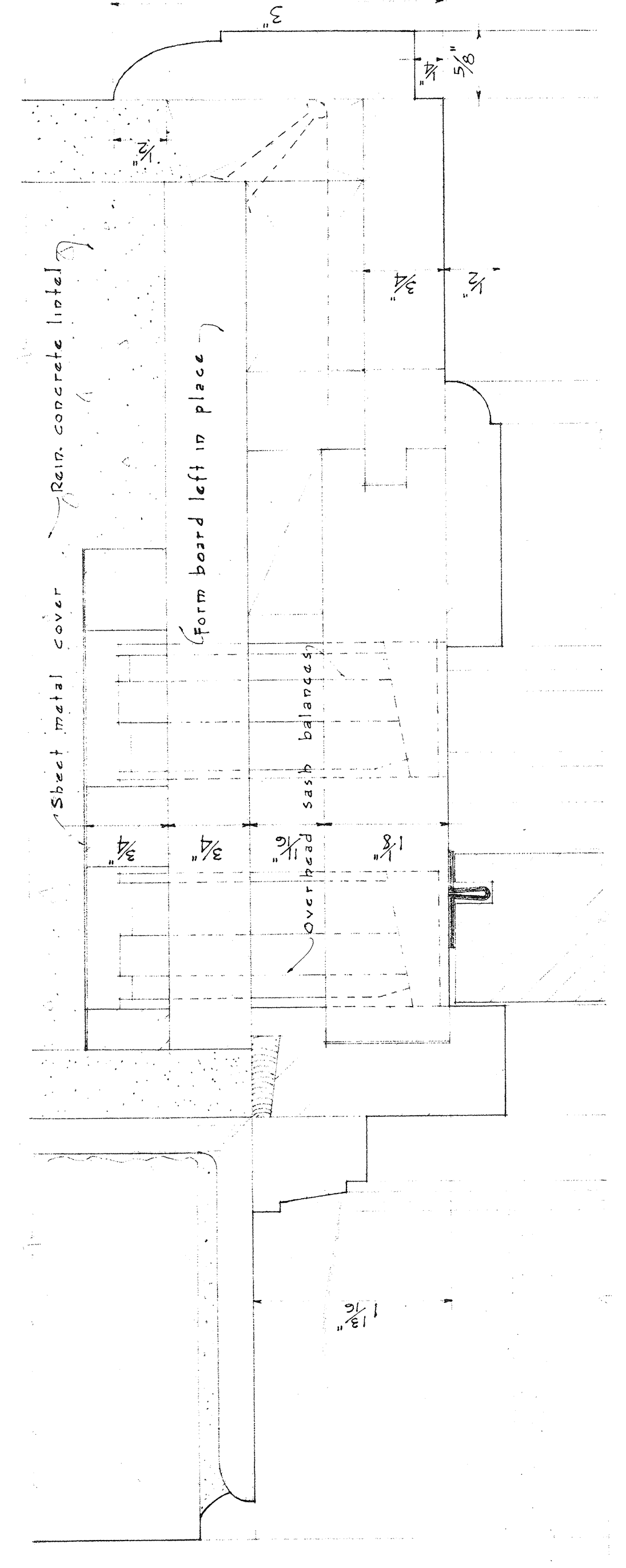
SASH

SASH

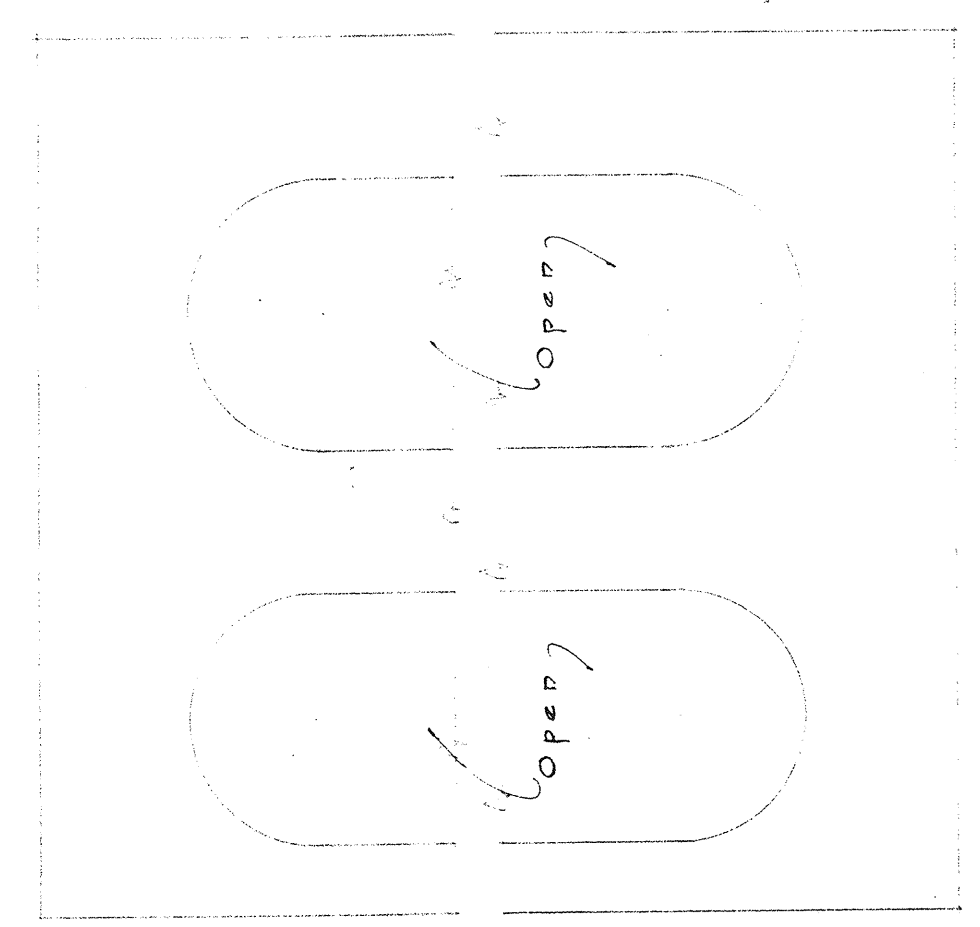
SILL



DIMENSIONS SAME AS SHOWN ON OPPOSITE SECTION

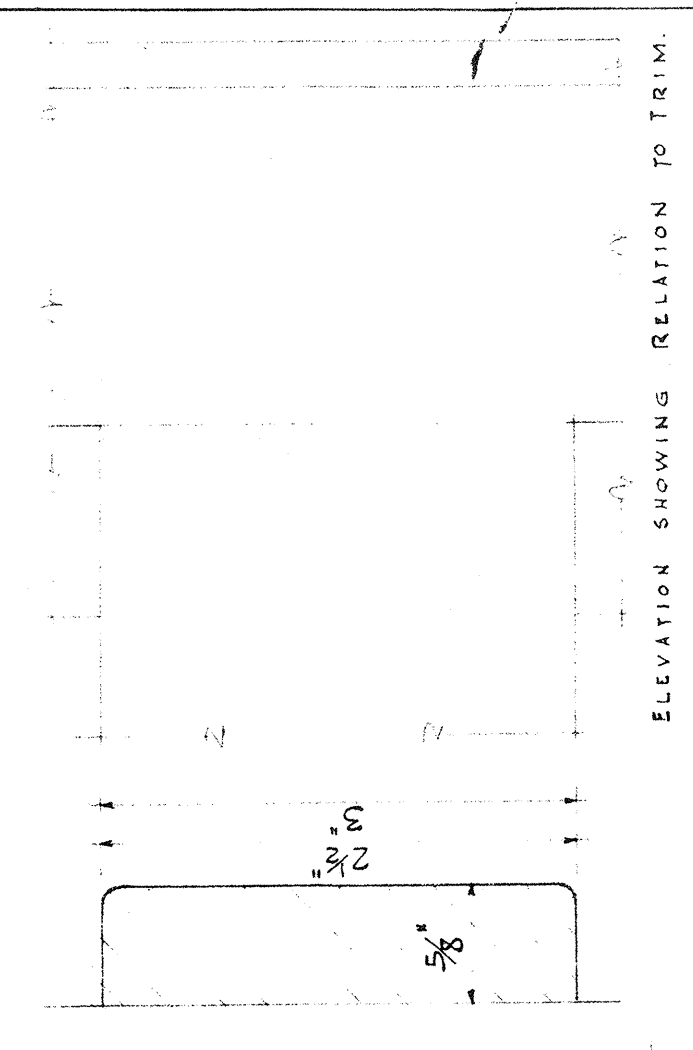


PLAN

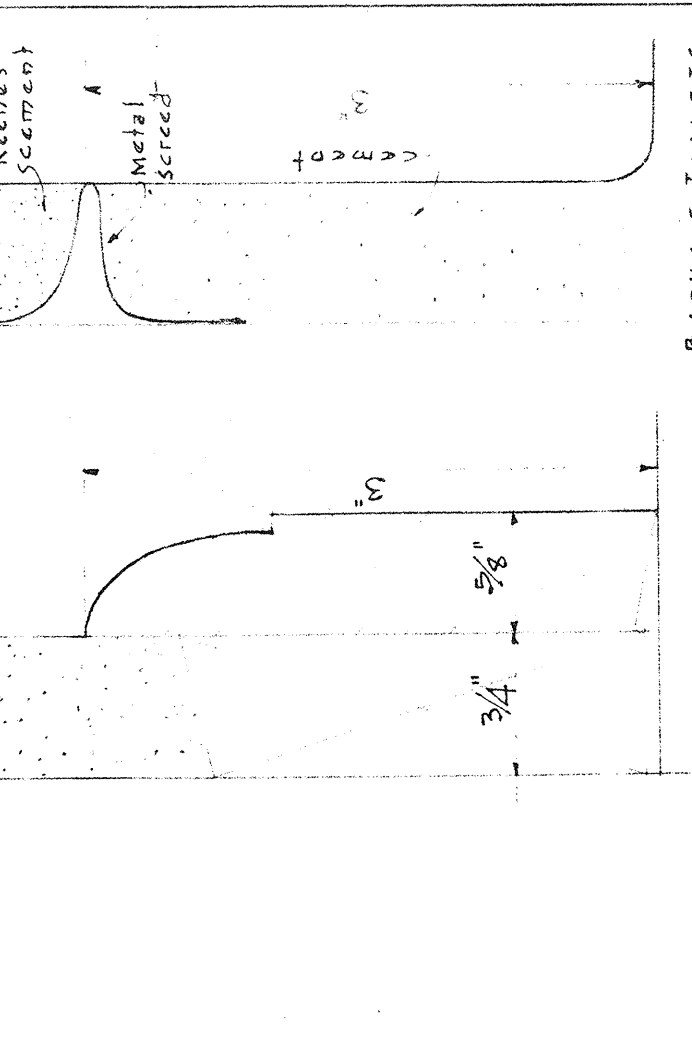


SUGGESTED METHOD OF PROVIDING FOR SASH BALANCES AT HEAD-PLACE 3/4" BOARD WITH CUTOUTS IN FORM AND COVER WITH SHEET METAL.

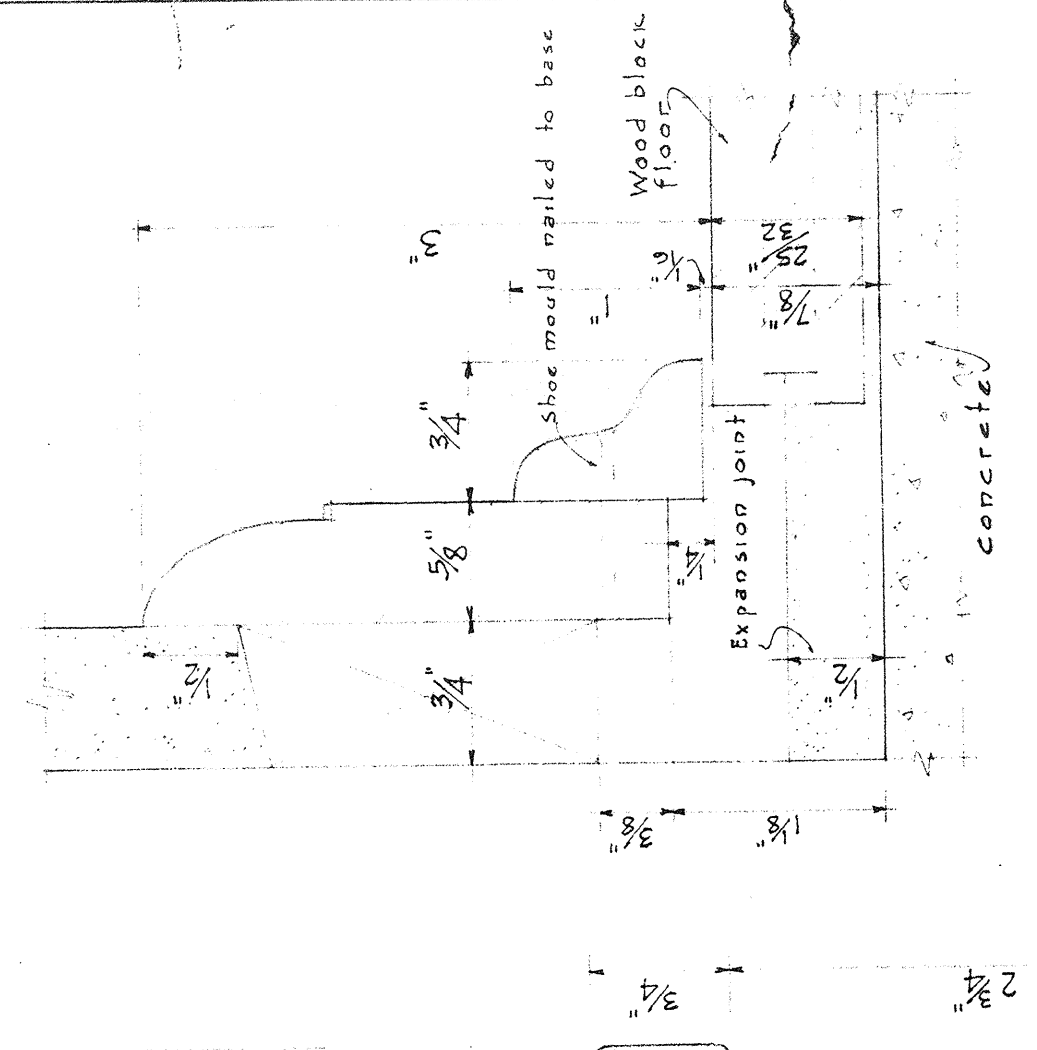
DOTTED LINES INDICATE CEMENT SILL AND PLASTER RETURNS AT HEAD AND JAMBS TO BE USED IN BATHS.



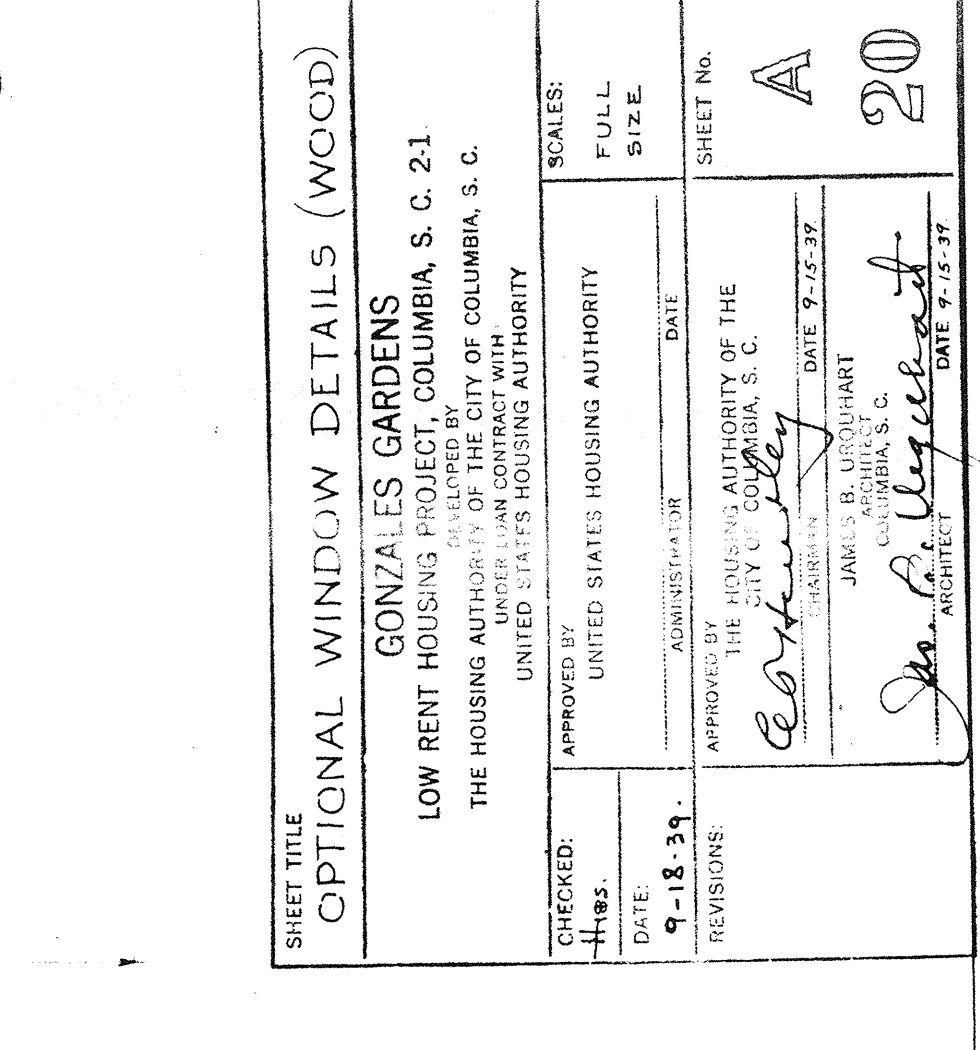
WAINSCOT CAP AND HOOK STRIPS



BASE FOR CEMENT FLOORS



BASE FOR WOOD FLOORS



SHEET TITLE	
OPTIONAL WINDOW DETAILS (WOOD)	
GONZALES GARDENS	
LOW RENT HOUSING PROJECT, COLUMBIA, S. C. 21	
THE HOUSING AUTHORITY OF THE CITY OF COLUMBIA, S. C.	
UNITED STATES HOUSING AUTHORITY	
CHECKED BY	APPROVED BY
DATE	DATE
BY	BY
SHEET No.	
A	
20	