



2 0 2 2

# SOUTH CAROLINA AIRPORT DIRECTORY AND PILOT'S GUIDE



SOUTH CAROLINA  
**AERONAUTICS**

## CONTENTS

<b>Table of Contents</b>	<b>I</b>
<b>Message from the Director of the SC Aeronautics Commission</b>	<b>II</b>
<b>Message from the Governor</b>	<b>III</b>
<b>SC Aeronautics Commission Members</b>	<b>IV</b>
<b>Federal Aviation Administration Directory</b>	<b>V</b>
<b>South Carolina Airport Manager's Directory</b>	<b>VI</b>
<b>Airport Location Identifiers</b>	<b>VII</b>
<b>Airports and Cities</b>	<b>VIII</b>
<b>Automated Weather Observation Stations</b>	<b>IX-X</b>
<b>Key to Airport Information</b>	<b>XI-XII</b>
<b>VFR Visibility and Cloud Minimums</b>	<b>XIII</b>
<b>Temperature Conversion</b>	<b>XIV</b>
<b>Airports: Photographs and Facility Data (listed alphabetically by city)</b>	<b>1-66</b>
<b>Online Flight Planning</b>	<b>Inside back cover</b>

### Cover Photos

Front Cover - A 1943 Boeing B75N1 Stearman Kaydet is ready for its next mission. Powered by a 300 horsepower Lycoming R680 radial engine, the World War II era biplane is owned by brothers Scott and David Knoblauch based at Greenville-Spartanburg International Airport.

Rear Cover - Lycoming R680 radial engine.

Photo Credits - Benjy Gardner.

Greetings:

The South Carolina Aeronautics Commission (SCAC) has prepared and distributed this airport directory for the purpose of making your flights in South Carolina safer and more enjoyable. All the airports listed are either publicly or privately owned and are available for public use. Updates to the directory are posted on our website at [www.scaeronautics.sc.gov](http://www.scaeronautics.sc.gov).

**This Airport Directory is not FAA approved  
and is not to be used for navigation.**

Due to constantly changing airport information, SCAC assumes no responsibility for any action taken by a pilot based on information contained herein, and the publisher assumes no responsibility for the accuracy of the information presented. Pilots are reminded that it is their responsibility to verify information by checking Federal Aviation Administration Notices to Airmen and the Aeronautical Information Manual.

The mission of SCAC includes promoting and fostering aviation in South Carolina, and our hope is that you'll use this directory as you travel throughout South Carolina and visit our wonderful airports. During your travels, please let us know how our airports are doing, and let us know if you see any airport conditions that need to be improved.

As always, we welcome any ideas or suggestions on how SCAC can improve this resource and our state airport system. Blue Skies!



James D. Stephens  
Director  
South Carolina Aeronautics Commission

2553 Airport Boulevard, West Columbia, South Carolina 29170

(803) 896-6262

[www.scaeronautics.sc.gov](http://www.scaeronautics.sc.gov)



HENRY MCMASTER  
GOVERNOR

Dear Friends,

Public-use airports are a critical part of the infrastructure and economy of the Palmetto State. Supporting everything from tourism to trade, airfields are indispensable to our industries and citizens alike.

The *South Carolina Airport Directory and Pilots Guide*, issued annually by the South Carolina Aeronautics Commission, provides pertinent information about airport runways and support facilities throughout the State. It is a handy and practical resource for any pilot who flies the skies of South Carolina. We hope you find it useful.

Peggy and I thank you for your interest in air travel in South Carolina, and we wish you a very safe journey.

Yours very truly,

A handwritten signature in blue ink, reading "Henry McMaster", is written over a light blue horizontal line.

Henry McMaster



# COMMISSION MEMBERS



## Chairman, At-Large

**Delphin A. Gantt, Jr.**

Phone (803) 479-7199 Email: [chairman@aeronautics.sc.gov](mailto:chairman@aeronautics.sc.gov)



## District 1

**Anne Esposito**

Phone (843) 597-2236 Email: [district1@aeronautics.sc.gov](mailto:district1@aeronautics.sc.gov)

District Airports: ARW, DYB, HXD, JZI, LRO, MKS



## District 2

**David Anderson**

Phone (803) 622-8408 Email: [district2@aeronautics.sc.gov](mailto:district2@aeronautics.sc.gov)

District Airports: IDS, 6JO, AIK, BNL, CAE, S17



## District 3

**Skeets Cooper**

Phone (864) 230-5799 Email: [district3@aeronautics.sc.gov](mailto:district3@aeronautics.sc.gov)

District Airports: 6J4, 6J6, AND, CEU, EOE, GRD, LOK, LUX, S19



## District 4

**Lara Kaufmann**

Phone (864) 270-6660 Email: [district4@aeronautics.sc.gov](mailto:district4@aeronautics.sc.gov)

District Airports: 33A, GMU, GSP, GYH, SPA



## District 5

**Charles D. "Doug" Barnes**

Phone (803) 287-5900 Email: [district5@aeronautics.sc.gov](mailto:district5@aeronautics.sc.gov)

District Airports: 35A, 52J, CDN, DCM, FDW, LKR, SMS, T73, UZA



## District 6

**Marco Cavazzoni**

Phone (843) 822-3637 Email: [district6@aeronautics.sc.gov](mailto:district6@aeronautics.sc.gov)

District Airports: 3JO, 3J1, 51J, 5J5, 6J2, 99N, AQX, CHS, CKI, CUB, MNI, OGB, RBW



## District 7

**Chris Bethea**

Phone (843) 283-8484 Email: [district7@aeronautics.sc.gov](mailto:district7@aeronautics.sc.gov)

District Airports: 58J, 5J9, 6J7, 9W9, BBP, COW, CRE, DLC, FLO, GGE, HVS, HYW, MAO, MYR, PHH, PYG, S79, UDG



## Director

**James Stephens**

Phone (803) 896-6262 Email: [jstephens@aero.sc.gov](mailto:jstephens@aero.sc.gov)

## **FEDERAL AVIATION ADMINISTRATION OFFICES**

### **Administrator**

Federal Aviation Administration  
800 Independence Avenue  
Washington, DC 20591  
Phone: (202) 267-3111  
Phone: 1- (800) 835-5322

### **Regional Administrator**

Southern Region Headquarters  
Federal Aviation Administration  
PO Box 20636  
Atlanta, GA 30320-0631  
Phone: (404) 305-5002

### **FAA Atlanta Airport District Office**

Federal Aviation Administration  
1701 Columbia Avenue  
Suite 220  
College Park, GA 30337-2747  
Phone: (404) 305-6798

### **FAA Columbia Flight Standards District Offices**

Federal Aviation Administration  
125B Summer Lake Drive  
West Columbia, SC 29170  
Phone: (803) 765-5931

### **Flight Service**

Leidos Flight Service  
Phone: 1-(800) WX BRIEF  
  
[www.1800wxbrief.com](http://www.1800wxbrief.com)

## AIRPORT MANAGER'S DIRECTORY

Airport Name	Name	Phone
AIKEN RGNL	Joy Lester	(803) 643-2123
ALLEDALE COUNTY	Deborah Creech	(803) 584-3801
ANDERSON RGNL	Brett Garrison	(864) 260-4163
BAMBERG COUNTY	Joey Preston	(803) 245-5191
BARNWELL RGNL	Brandon Chavis	(803) 259-1090
BEAUFORT EXECUTIVE	Paul Dolin	(843) 255-2972
BERKELEY COUNTY	Stacy Thomas	(843) 719-4751
BRANHAMS	Dwayne Weatherford	(843) 307-0070
CHARLESTON AFB/INTL	Elliott Summey	(843) 767-7000
CHARLESTON EXECUTIVE	Elliott Summey	(843) 767-7000
CHERAW MUNI/LYNCH BELLINGER FIELD	Wendell Hall	(843) 537-6423
CHESTER CATAWBA RGNL	Keith Roach	(803) 385-6664
CLIO CROP CARE	Ken Hanke	(843) 586-9225
COLUMBIA METROPOLITAN	Michael Gula	(803) 822-5017
CONWAY-HORRY COUNTY	Scott VanMoppes	(843) 448-1580
DARLINGTON COUNTY	Barry Kennett	(843) 393-9928
DILLON COUNTY	Tony Caulder	(843) 774-1449
DONALDSON FIELD	Danny Moyd	(864) 277-3152
DRY SWAMP	Kurt Von Graff	(803) 534-3157
EDGEFIELD COUNTY	Johnny Anderson	(803) 279-4138
FAIRFIELD COUNTY	Denise Bryan	(803) 718-0087
FAIRVIEW	Greg Hall	(864) 420-1400
FLORENCE RGNL	Connie Anderson	(843) 519-0552
GEORGETOWN COUNTY	Jim Taylor	(843) 545-3638
GRAND STRAND	Scott VanMoppes	(843) 448-1580
GREEN SEA	Cody Herring	(843) 230-0362
GREENVILLE DOWNTOWN	Joseph Frasher	(864) 242-4777
GREENVILLE SPARTANBURG INTL	David Edwards	(864) 848-6272
GREENWOOD COUNTY	Rett Templeton	(864) 942-8639
HAMPTON COUNTY	Dobie Hiers	(803) 914-0795
HARTSVILLE RGNL	Mark DeFields	(910) 284-3166
HILTON HEAD	Jon Rembold	(843) 255-2952
HOLLY HILL	David Barber	(843) 514-4757
HUGGINS MEMORIAL	Bettie Huggins	(843) 346-3734
JIM HAMILTON - LB OWENS	Christopher Eversmann	(803) 767-1789
KIRK AIR BASE	James Kirk	(803) 286-8800
LAKE CITY MUNI CJ EVANS FIELD	Dusan Fridl	(843) 687-6490
LANCASTER COUNTY-MC WHIRTER FIELD	Paul Moses	(803) 285-1513
LAURENS COUNTY	G. A. "Bud" Boyter	(864) 923-3507
LEE COUNTY-BUTTERS FIELD	George Roberts	(803) 229-2679
LEXINGTON COUNTY	Michael Spires	(803) 600-9242
LOWCOUNTRY RGNL	Thomas Rowe	(843) 549-2549
MARION COUNTY	Margaret Pittman	(843) 423-8265
MARLBORO COUNTY JETPORT - H E AVENT FIELD	Barry Avent	(843) 439-1269
MC CORMICK COUNTY	Columbus Stephens	(864) 852-2231
MT PLEASANT RGNL-FAISON FIELD	Elliott Summey	(843) 767-7000
MYRTLE BEACH INTL	Scott VanMoppes	(843) 448-1580
NEWBERRY COUNTY	Mike Pisano	(803) 944-4298
OCONEE COUNTY RGNL	Jeff Garrison	(864) 882-2959
ORANGEBURG MUNI	Betty Baker	(803) 534-5545
PAGELAND	Cecil Kimrey	(843) 672-7292
PICKENS COUNTY	Carlos Salinas	(864) 843-5803
RIDGELAND-CLAUDE DEAN	Danny Lucas	(843) 929-4159
ROBERT F SWINNIE	Jim Taylor	(843) 545-3638
ROCK HILL/YORK CO/BRYANT FIELD	Steven Gould	(803) 329-5560
SALUDA COUNTY	Jill Warren	(864) 445-2529
SANTEE COOPER RGNL	Vickie Williams	(803) 433-3223
SPARTANBURG DOWNTOWN MEMORIAL	Terry Connorton	(864) 574-8552
ST GEORGE	Don Hay	(843) 412-1999
SUMMERVILLE	Don Hay	(843) 412-1999
SUMTER	Jeff Knauer	(803) 469-4639
TWIN CITY	Scott VanMoppes	(843) 448-1580
TWIN LAKES	James "Tony" Burgess	(803) 507-8669
UNION COUNTY, TROY SHELTON FIELD	Ronnie Wade	(864) 429-1680
WILLIAMSBURG RGNL	John Hudson	(843) 372-2255
WOODWARD FIELD	Ron Prestage	(803) 427-5992

# AIRPORT LOCATION IDENTIFIERS

ID	Airport Name	Associated City	Page No.
1DS	DRY SWAMP	ORANGEBURG	50
33A	FAIRVIEW	LANDRUM	39
35A	UNION COUNTY, TROY SHELTON FIELD	UNION	64
3J0	HAMPTON COUNTY	HAMPTON	31
3J1	RIDGELAND-CLAUDE DEAN	RIDGELAND	55
51J	LAKE CITY MUNI CJ EVANS FIELD	LAKE CITY	36
52J	LEE COUNTY-BUTTERS FIELD	BISHOPVILLE	9
58J	HUGGINS MEMORIAL	TIMMONSVILLE	62
5J5	HOLLY HILL	HOLLY HILL	34
5J9	TWIN CITY	LORIS	41
6J0	LEXINGTON COUNTY	PELION	53
6J2	ST GEORGE	ST GEORGE	59
6J4	SALUDA COUNTY	SALUDA	57
6J6	EDGEFIELD COUNTY	TRENTON	63
6J7	BRANHAMS	DARLINGTON	20
99N	BAMBERG COUNTY	BAMBERG	5
9W9	CLIO CROP CARE	CLIO	16
AIK	AIKEN RGNL	AIKEN	1
AND	ANDERSON RGNL	ANDERSON	3
AQX	ALLENDALE COUNTY	ALLENDALE	2
ARW	BEAUFORT EXEC	BEAUFORT	7
BBP	MARLBORO COUNTY JETPORT - H E AVENT FIELD	BENNETTSVILLE	8
BNL	BARNWELL RGNL	BARNWELL	6
CAE	COLUMBIA METROPOLITAN	COLUMBIA	17
CDN	WOODWARD FIELD	CAMDEN	10
CEU	OCONEE COUNTY RGNL	CLEMSON	15
CHS	CHARLESTON AFB/INTL	CHARLESTON	11
CKI	WILLIAMSBURG RGNL	KINGSTREE	35
CQW	CHERAW MUNI/LYNCH BELLINGER FIELD	CHERAW	13
CRE	GRAND STRAND	NORTH MYRTLE BEACH	49
CUB	JIM HAMILTON L B OWENS	COLUMBIA	18
DCM	CHESTER CATAWBA RGNL	CHESTER	14
DLC	DILLON COUNTY	DILLON	22
DYB	SUMMERVILLE	SUMMERVILLE	60
EOE	NEWBERRY COUNTY	NEWBERRY	48
FDW	FAIRFIELD COUNTY	WINNSBORO	66
FLO	FLORENCE RGNL	FLORENCE	23
GGE	GEORGETOWN COUNTY	GEORGETOWN	24
GMU	GREENVILLE DOWNTOWN	GREENVILLE	27
GRD	GREENWOOD COUNTY	GREENWOOD	29
GSP	GREENVILLE SPARTANBURG INTL	GREER	30
GYH	DONALDSON FIELD	GREENVILLE	28
HVS	HARTSVILLE RGNL	HARTSVILLE	32
HXD	HILTON HEAD	HILTON HEAD ISLAND	33
HYW	CONWAY-HORRY COUNTY	CONWAY	19
JZI	CHARLESTON EXECUTIVE	CHARLESTON	12
LKR	LANCASTER COUNTY-MC WHIRTER FIELD	LANCASTER	37
LQK	PICKENS COUNTY	PICKENS	54
LRO	MT PLEASANT RGNL-FAISON FIELD	MOUNT PLEASANT	46
LUX	LAURENS COUNTY	LAURENS	40
MAO	MARION COUNTY	MARION	43
MKS	BERKELEY COUNTY	MONCK'S CORNER	45
MNI	SANTEE COOPER RGNL	MANNING	42
MYR	MYRTLE BEACH INTL	MYRTLE BEACH	47
OGB	ORANGEBURG MUNI	ORANGEBURG	51
PHH	ROBERT F SWINNIE	ANDREWS	4
PYG	PAGELAND	PAGELAND	52
RBW	LOWCOUNTRY RGNL	WALTERBORO	65
S17	TWIN LAKES	GRANITEVILLE	25
S19	MC CORMICK COUNTY	MC CORMICK	44
S79	GREEN SEA	GREEN SEA	26
SMS	SUMTER	SUMTER	61
SPA	SPARTANBURG DOWNTOWN MEMORIAL/SIMPSON	SPARTANBURG	58
T73	KIRK AIR BASE	LANCASTER	38
UDG	DARLINGTON COUNTY	DARLINGTON	21
UZA	ROCK HILL/YORK CO/BRYANT FIELD	ROCK HILL	56



# AIRPORT CROSS REFERENCE INDEX

Airport Name	Associated City	Page No.
AIKEN RGNL	AIKEN	1
ALLENDALE COUNTY	ALLENDALE	2
ANDERSON RGNL	ANDERSON	3
BAMBERG COUNTY	BAMBERG	5
BARNWELL RGNL	BARNWELL	6
BEAUFORT EXEC	BEAUFORT	7
BERKELEY COUNTY	MONCK'S CORNER	45
BRANHAMS	DARLINGTON	20
CHARLESTON AFB/INTL	CHARLESTON	11
CHARLESTON EXECUTIVE	CHARLESTON	12
CHERAW MUNI/LYNCH BELLINGER FIELD	CHERAW	13
CHESTER CATAWBA RGNL	CHESTER	14
CLIO CROP CARE	CLIO	16
COLUMBIA METROPOLITAN	COLUMBIA	17
CONWAY-HORRY COUNTY	CONWAY	19
DARLINGTON COUNTY	DARLINGTON	21
DILLON COUNTY	DILLON	22
DONALDSON FIELD	GREENVILLE	28
DRY SWAMP	ORANGEBURG	50
EDGEFIELD COUNTY	TRENTON	63
FAIRFIELD COUNTY	WINNSBORO	66
FAIRVIEW	LANDRUM	39
FLORENCE RGNL	FLORENCE	23
GEORGETOWN COUNTY	GEORGETOWN	24
GRAND STRAND	NORTH MYRTLE BEACH	49
GREEN SEA	GREEN SEA	26
GREENVILLE DOWNTOWN	GREENVILLE	27
GREENVILLE SPARTANBURG INTL	GREER	30
GREENWOOD COUNTY	GREENWOOD	29
HAMPTON COUNTY	HAMPTON	31
HARTSVILLE RGNL	HARTSVILLE	32
HILTON HEAD	HILTON HEAD ISLAND	33
HOLLY HILL	HOLLY HILL	34
HUGGINS MEMORIAL	TIMMONSVILLE	62
JIM HAMILTON L B OWENS	COLUMBIA	18
KIRK AIR BASE	LANCASTER	38
LAKE CITY MUNI CJ EVANS FIELD	LAKE CITY	36
LANCASTER COUNTY-MC WHIRTER FIELD	LANCASTER	37
LAURENS COUNTY	LAURENS	40
LEE COUNTY-BUTTERS FIELD	BISHOPVILLE	9
LEXINGTON COUNTY	PELION	53
LOWCOUNTRY RGNL	WALTERBORO	65
MARION COUNTY	MARION	43
MARLBORO COUNTY JETPORT - H E AVENT FIELD	BENNETTSVILLE	8
MC CORMICK COUNTY	MC CORMICK	44
MT PLEASANT RGNL-FAISON FIELD	MOUNT PLEASANT	46
MYRTLE BEACH INTL	MYRTLE BEACH	47
NEWBERRY COUNTY	NEWBERRY	48
OCONEE COUNTY RGNL	CLEMSON	15
ORANGEBURG MUNI	ORANGEBURG	51
PAGELAND	PAGELAND	52
PICKENS COUNTY	PICKENS	54
RIDGELAND-CLAUDE DEAN	RIDGELAND	55
ROBERT F SWINNIE	ANDREWS	4
ROCK HILL/YORK CO/BRYANT FIELD	ROCK HILL	56
SALUDA COUNTY	SALUDA	57
SANTEE COOPER RGNL	MANNING	42
SPARTANBURG DOWNTOWN MEMORIAL/SIMPSON	SPARTANBURG	58
ST GEORGE	ST GEORGE	59
SUMMERVILLE	SUMMERVILLE	60
SUMTER	SUMTER	61
TWIN CITY	LORIS	41
TWIN LAKES	GRANITEVILLE	25
UNION COUNTY, TROY SHELTON FIELD	UNION	64
WILLIAMSBURG RGNL	KINGSTREE	35
WOODWARD FIELD	CAMDEN	10

## AUTOMATED WEATHER OBSERVING SYSTEM (AWOS)

Associated City	Ident	Freq	Phone No
AIKEN	AIK	118.025	(803) 643-8664
ALLENDALE	AQX	118.950	(803) 584-3696
BARNWELL	BNL	119.775	(803) 259-4536
BEAUFORT	ARW	119.675	(843) 524-1000
BENNETTSVILLE	BBP	123.825	(843) 479-5817
CAMDEN	CDN	119.975	(803) 424-1979
CHARLESTON	JZI	123.775	(843) 559-3123
CHERAW	CQW	124.825	(843) 537-3301
CHESTER	DCM	120.975	(803) 385-2011
CONWAY	HYW	119.525	(843) 397-8046
DARLINGTON	UDG	119.925	(843) 393-8220
GEORGETOWN	GGE	118.275	(843) 527-3851
GREENVILLE	GYH	127.325	(864) 277-5674
HARTSVILLE	HVS	118.225	(843) 339-9625
HILTON HEAD ISLAND	HXD	121.400	(843) 342-5072
KINGSTREE	CKI	124.775	(843) 382-3000
LANCASTER	LKR	120.825	(803) 286-6444
LAURENS	LUX	123.975	(864) 682-3639
MANNING	MNI	120.175	(803) 478-6060
MARION	MAO	119.875	(843) 423-4231
MONCK'S CORNER	MKS	119.175	(843) 761-1486
MOUNT PLEASANT	LRO	118.625	(843) 849-0438
MYRTLE BEACH	MYR	123.925	(843) 238-0335
NEWBERRY	EOE	124.275	(803) 276-2419
PICKENS	LQK	120.000	(864) 843-5801
SPARTANBURG	SPA	133.925	(864) 587-2529
SUMMERVILLE	DYB	119.575	(843) 821-8403
SUMTER	SMS	118.075	(803) 469-6750
UNION	35A	119.450	(864) 427-1514
WALTERBORO	RBW	118.725	(843) 538-3575
WINNSBORO	FDW	119.075	(803) 712-2577

## AUTOMATED SURFACE OBSERVING SYSTEM (ASOS)

Associated City	Ident	Freq	Phone No
ANDERSON	AND	120.675	(864) 226-9522
CHARLESTON	CHS	N/A	(843) 554-9862
CLEMSON	CEU	119.275	(864) 653-8855
COLUMBIA	CUB	118.675	(803) 929-0665
COLUMBIA	CAE	N/A	(803) 822-4168
FLORENCE	FLO	123.625	(843) 665-1306
GREENVILLE	GMU	127.075	(864) 239-0014
GREENWOOD	GRD	121.125	(864) 388-9115
GREER	GSP	N/A	(864) 879-0614
NORTH MYRTLE BEACH	CRE	119.625	(843) 361-2802
ORANGEBURG	OGB	118.525	(803) 536-3901
ROCK HILL	UZA	120.775	(803) 981-9388

# **AUTOMATED WEATHER OBSERVATION SYSTEM**

The Automated Weather Observation System (AWOS) enhances safety by providing critical airport weather information to pilots to be used for flight planning and in-flight decision making. The system provides real-time weather observations including wind, visibility, current weather, sky conditions, temperature, dew point, altimeter setting, and remarks, such as density altitude and local airport conditions.

South Carolina has an integrated system of 29 AWOS sites at airports in South Carolina that are maintained by the South Carolina Aeronautics Commissions (SCAC) office. An additional twelve weather observation sites maintained by the Federal Aviation Administration (FAA) are located at airports in South Carolina.

AWOS information can be accessed in a variety of ways, including radio frequency, telephone, and weather terminals at airports with AWOS. All AWOS information is disseminated nationwide through a system called NADIN, making it available to sources like Flight Service Stations, the National Weather Service, and Weather Channels.

## **What every pilot should know about AWOS**

### **Wind**

- Taken every second and a running two-minute average is updated every five seconds
- Wind speeds of less than three knots are reported as calm
- If the difference between the highest five second average and two minute average exceeds five knots, gusts are reported
- Wind direction is reported from the nearest ten degree magnetic heading

### **Visibility**

- Readings are taken every fifteen seconds and are averaged over a ten minute period

### **Present weather**

- A precipitation sensor samples every fifteen seconds
- Temperature and visibility measurements are used to determine precipitation type

### **Sky conditions (ceilings)**

- Readings are taken every 30 seconds and averaged over a 30 minute period
- Ceiling measurements are rounded as follows:
  - o Nearest 100 feet up to 5,000 feet AGL
  - o Nearest 500 feet from 5,000 -10,000 feet AGL
  - o Nearest 1,000 feet above 10,000 feet

### **Temperature and dew point**

- Four, one minute averages are used to determine the temperature

### **Altimeter (barometric pressure)**

- Pressure sensors take readings every ten seconds and a one minute average is calculated

### **Remarks**

- A calculated density altitude report is provided, if density altitude is greater than 1,000 feet above the airport's field elevation
- Occasionally, airport managers will provide recorded remarks regarding NOTAM'S or local airport conditions

AWOS is maintained by the SCAC and is continuously monitored to ensure its operational status. Individual sites are also maintained and calibrated on a regular basis to ensure reliability and accuracy. As with an electronic device, care must be used when interpreting data. By knowing how AWOS data is collected, a pilot can better understand the information they are receiving.

## KEY TO AIRPORT INFORMATION

---

1. Name	Airport FAA ID and Name
2. Chart	FAA Chart and Sectional
3. Information Date	Data Information Date
4. Associated City	Airport FAA ID and Name
5. Latitude	Airport Latitude
6. Longitude	Airport Longitude
7. Aerial View	Aerial View of the Airport Runways and Approaches
8. Elevation	Elevation of the Highest Point on Runway.
9. Magnetic Var	Magnetic Variants in Degrees and Direction
10. ID	Runway ID
11. Length	Length of Pavement/Turf End-to-End
12. Width	Width of Pavement or Turf
13. Surface	Runway Surface (asph, turf etc) Type
14. VGI	Visual Glide Slope Indicators (noted for each end)
15. REILS	Runway End Identifier Lights Sys (noted for each end)
16-17. Lights	Lights to Aid Landing Craft
18. Pattern	15-RH Indicates 15 Has Right Hand Traffic Pattern
19. Runway	Runway ID
20. SW	Gross Weight for Single Wheel Aircraft
21. DW	Gross Weight for Dual Wheel Aircraft
22. DTW	Gross Weight for Dual Tandem Wheel Aircraft
23. DDTW	Gross Weight for Double Dual Tandem Wheel Aircraft
24. Ident	Navigation Aid Identification
25. Type	Type of NAVAID (NBD VOR etc)
26. FREQ	NAVAID Frequency
27. DIRECT/DIST	Direction and Distant to Airport
28. Communications (Tower Facility)	
Tower	Tower's Frequency
GRND	Ground Control Frequency
CL DEL	Clearance and Delivery Frequency
ATIS	Automatic Terminal Information System Frequency
ATC FREQ	Air Traffic Control Service Frequency
ATC FAAID	Air Traffic Control Service FAA Identification
RCO	Remote Control Outlet Frequency
BRNG/FREQ	Approach/Departure Bearings and Frequencies
28. Communications (Non-Towered Facility)	
Unicom	Unicom Frequency
CTAF	Common Traffic Advisory Frequency
GCO	Ground Control Outlet Frequency
RCO	Remote Control Outlet Frequency
ATC FREQ	Air Traffic Control Service Frequency
ATC FAAID	Air Traffic Control Service FAA Identification
29. AWOS Freq	Automated Weather/Surface Observation System Frequency
30. AWOS Phone	Automated Weather/Surface Observation System Phone
31. Manager	Manager Name



1. Name
2. Chart and Sectional
3. Information Date

4. Associated City
5. Latitude
6. Longitude

7. Airport Aerial View

8. Elevation

9. Magnetic Variants

Runway						Edge	Approach	Traffic
ID	Length	Width	Surface	VGSI	REILS	Lights	Lights	Pattern
10.	11.	12.	13.	14.	15.	16.	17.	18.

Runway Pavement Strength					Navigation			
Runway	SW	DW	DTW	DDTW	IDENT	Type	FREQ	Direct/Dist
19.	20.	21.	22.	23.	24.	25.	26.	27.

Communications							AWOS/ASOS	
28.							FREQ	Phone
							29.	30.

31.	Manager	37.	Storage	43.	Repairs
32.	Address	38.	Landing Fee	44.	Oxygen
33.	Phone	39.	Lighting Sch	45.	Fuel Type
34.	Fax	40.	PCL Remark		
35.	E-mail	41.	Att Schedule		
36.	FBO	42.	Remarks		

32. Address

Manager Address
33. Phone

Manager Phone
34. Fax

Manager Fax No
35. E-Mail

E-mail Address
36. FBO

Fixed Based Operator
37. Storage

Storage Facilities
38. Fees

Landing Fees
39. Lighting Sch

Lighting Schedule
40. PCL Remark

Pilot Control Lighting Instructions
41. Att Schedule

Attended Schedule
42. Remarks

Airport Remarks
43. Repairs

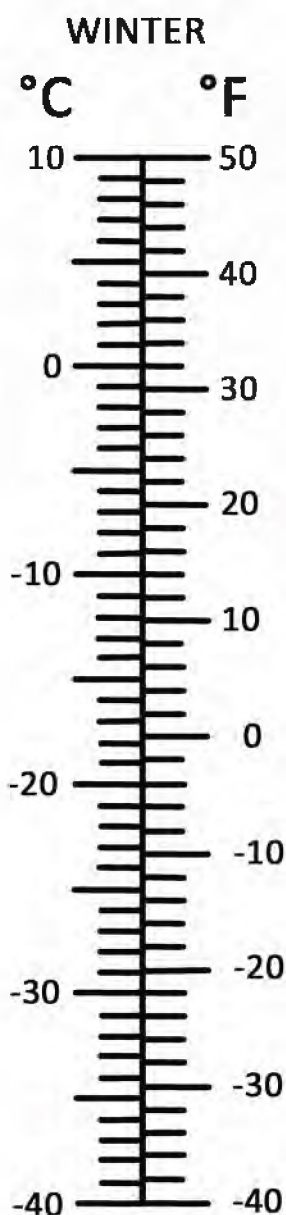
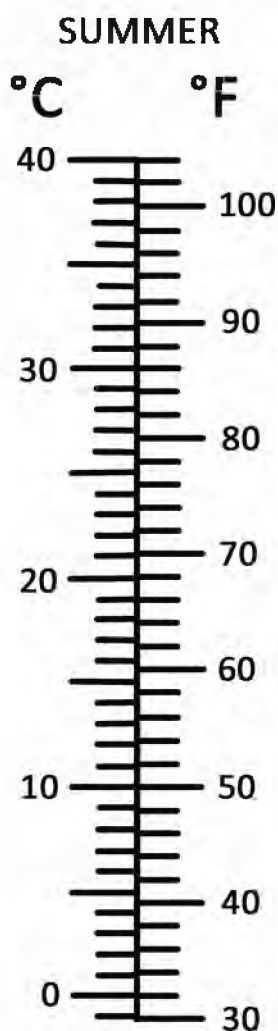
Indicates Repair Facilities Available
44. Oxygen

Indicates Oxygen Available
45. Fuel Type

Fuel Type(s) Available



## TEMPERATURE CONVERSIONS



**AIKEN - 1**

**Latitude:** 33° 38' 57.8000" N

**Longitude:** 81° 41' 06.1000" W



Mag Var - 07° W

Runway					Edge	Approach	Traffic
ID	Length	Width	Surface	VGSI	REILS	Lights	Pattern
01/19	3800'	75'	ASPH				Standard
07/25	5500'	100'	ASPH	07/25	25	MED	25 Standard

Runway Pavement Strength					Navigation			
Runway	SW	DW	DTW	DDTW	IDENT	Type	FREQ	Direct/Dist
01/19	54.0	75.0	139.0		AIK	NDB	347	at fld
07/25	55.0	75.0	140.0		IRQ	VORTAC	113.90	r102° 14.6 NM to fld

Communications				ATC		AWOS/ASOS	
Unicom	CTAF	GCO	RCO	FREQ	FAA ID	FREQ	Phone
122.800	122.800			119.15	AGS	118.025	(803) 643-8664

**Manager** Joy C. Lester  
**GPS Address** 214 Park Avenue, SW  
Aiken, SC 29801  
**Phone** (803) 643-2123

**Fax**  
**E-mail** JLester@CityofAikenSC.gov

**FBO Phone/Fax**  
Aiken Aviation Enterprises, Inc  
(803) 648-7803      (803) 648-7804

<b>Storage</b>	HGR,TIE	<b>Repairs</b>	Y
<b>Landing Fee</b>	N	<b>Oxygen</b>	N
<b>Lighting Sched</b>	SEE RMK	<b>Fuel Type</b>	100LL, JET A

<b>Att Schedule</b>	Daily 0700-1900
<b>Remarks</b>	No RAMP FEE piston AC & or fuel purchase 7/25 RWY LGTS & ODALS use CTAF After hours access & fuel call 803-640-6891 CLNC DEL 126.075



CHARLOTTE SECTIONAL  
12/30/2021

**ALLENDALE - 2**

**Latitude:** 32° 59' 42.4020" N  
**Longitude:** 81° 16' 12.8520" W



**Elevation - 162' MSL**

Mag Var - 06° W

Runway					Edge	Approach	Traffic
ID	Length	Width	Surface	VGSI	REILS	Lights	Lights
17/35	4990'	75'	ASPH	17/35		MED	Standard

Runway Pavement Strength					Navigation			
Runway	SW	DW	DTW	DDTW	IDENT	Type	FREQ	Direct/Dist
17/35	26.0	34.0			ALD	VOR	116.70	r134° 1.5 NM to fld

Communications				ATC		AWOS/ASOS	
Unicom	CTAF	GCO	RCO	FREQ	FAA ID	FREQ	Phone
122.800	122.800						
			116.7T 122.1R	132.925	JAX	118.950 (803)	584-3696

**Manager Deborah Creech**

**GPS** 467 Airport Loop

**Address** Fairfax, SC 29827

**Phone** (803) 584-3801

**Fax** (803) 584-4447

**E-mail** [dcreech@allendalecounty.com](mailto:dcreech@allendalecounty.com)

FBO Phone/Fax

## Storage

**Landing Fee** N

Lighting Sched SEE RMK

Att Schedule Daily 0900-1700

Remarks	ACTVT MIRL - CTAF. SELF SERVE 100LL and JET A 24/7 TERMINAL ACCESS KEYPAD/CTAF
---------	--

Repairs N

Oxygen N

**Fuel Type** 100LL, JET A

**ANDERSON - 3**

**Latitude:** 34° 29' 40.5000" N  
**Longitude:** 82° 42' 33.8000" W

Elevation - '782' MSL Mag Var - 05° W

Runway						Edge	Approach	Traffic
ID	Length	Width	Surface	VGSI	REILS	Lights	Lights	Pattern
05/23	5002'	149'	ASPH	05/23		HIGH	05	Standard
17/35	4996'	149'	ASPH					Standard
H1	50'	50'	CONC			PERI		
H2	50'	50'	CONC			PERI		

Runway Pavement Strength					Navigation			
Runway	SW	DW	DTW	DDTW	IDENT	Type	FREQ	Direct/Dist
05/23	40.0	58.0	109.0		ELW	VORTAC	108.60	r039° 5.9 NM to fld
17/35	17.5	28.0						

Communications				ATC		AWOS/ASOS	
Unicom	CTAF	GCO	RCO	FREQ	FAA ID	FREQ	Phone
	123.600		122.2	118.8	GSP	120.675 (864)	226-9522

<b>Manager</b>	Brett Garrison	<b>Storage</b>	HGR,TIE	<b>Repairs</b>	Y
<b>GPS</b>	5805 Airport Rd	<b>Landing Fee</b>	Y	<b>Oxygen</b>	Y
<b>Address</b>	Anderson, SC 29626	<b>Lighting Sched</b>	SEE RMK	<b>Fuel Type</b>	100LL, JET A
<b>Phone</b>	(864) 260-4163				

<b>Fax</b>	<b>Att Schedule</b>	M-F 0700-2000 / S-S 0800-2000
<b>E-mail</b> tbgarrison@andersoncountysc.org	<b>Remarks</b>	ACTVT HIRL RWY 05/23, MALSR RY 05 AND PERIMETER LGTS HELIPADS H1 & H2 - CTAF. RAMP FEES. After hours access use CTAF numbers for gate code. Parachute activity. SELF SERVICE 100LL. NO RAMP FEE FOR PISTON SINGLES.
<b>FBO Phone/Fax</b>		
Anderson County Aviation		
(864) 964-5656 (864) 231-2297		

**ANDREWS - 4**

**Latitude:** 33° 27' 06.1190" N  
**Longitude:** 79° 31' 34.2360" W



Mag Var - 08° W

Runway					Edge	Approach	Traffic
ID	Length	Width	Surface	VGSI	REILS	Lights	Lights
18/36	3001'	60'	ASPH	18/36		MED	Standard

Runway Pavement Strength					Navigation			
Runway	SW	DW	DTW	DDTW	IDENT	Type	FREQ	Direct/Dist
18/36	11.0	22.0			CHS	VORTAC	113.50	r043° 42.2 NM to fld

Communications				ATC		AWOS/ASOS	
Unicom	CTAF	GCO	RCO	FREQ	FAA ID	FREQ	Phone
	122.900			127.4	MYR		

Storage	TIE	Repairs	N
Landing Fee	N	Oxygen	N
Lighting Sched	SS-SR	Fuel Type	100LL

<b>Att Schedule</b>	UNATTENDED
<b>Remarks</b>	Activate MIRL & PAPI Rwy. 18-36 - CTAf. Parachute activity. SELF SERVE 100LL



## BAMBERG - 5

**Latitude:** 33° 18' 16.3000" N  
**Longitude:** 81° 06' 30.3000" W



Mag Var - 07° W

Runway					Edge	Approach	Traffic
ID	Length	Width	Surface	VGSI	REILS	Lights	Lights
05/23	3603'	60'	ASPH	05/23		MED	Standard

Runway Pavement Strength					Navigation			
Runway	SW	DW	DTW	DDTW	IDENT	Type	FREQ	Direct/Dist
05/23	30.0	60.0			CAE	VORTAC	114.70	r187° 33.2 NM to fld

Communications				ATC		AWOS/ASOS	
Unicom	CTAF	GCO	RCO	FREQ	FAA ID	FREQ	Phone

122.800 122.800

<b>Manager</b>	Joey Preston	<b>Storage</b>	TIE	<b>Repairs</b>	N
<b>GPS</b>	3865 Underpass Rd	<b>Landing Fee</b>	N	<b>Oxygen</b>	N
<b>Address</b>	Bamberg, SC 29003	<b>Lighting Sched</b>	SEE RMK	<b>Fuel Type</b>	100LL

**Fax** (803) 245-3027  
**E-mail** joeypreston@gmail.com  
**FBO Phone/Fax**

<b>Att Schedule</b>	UNATTENDED
<b>Remarks</b>	AFTER 2200, ACTVT MIRL AND PAPI RWY 05/23 - CTAF. Ramp Access use CTAF numbers SELF SERVICE 100LL



BNL - BARNWELL RGNL  
CHARLOTTE SECTIONAL  
12/30/2021

BARNWELL - 6  
Latitude: 33° 15' 27.6039" N  
Longitude: 81° 23' 17.5882" W



Elevation - 246' MSL

Mag Var - 07° W

Runway					Edge		Approach	Traffic
ID	Length	Width	Surface	VGSI	REILS	Lights	Lights	Pattern
05/23	4526'	70'	ASPH					23 - RH
17/35	5119'	100'	ASPH	17/35	17	MED	17	17 - RH

Runway Pavement Strength					Navigation			
Runway	SW	DW	DTW	DDTW	IDENT	Type	FREQ	Direct/Dist
05/23	12.0				CAE	VORTAC	114.70	r207° 39.6 NM tofd
17/35	69.0	99.0						

Communications				ATC		AWOS/ASOS	
Unicom	CTAF	GCO	RCO	FREQ	FAA ID	FREQ	Phone
122.800	122.800	121.725		132.925	JAX	119.775	(803) 259-4536

<b>Manager</b> Brandon Chavis	<b>Storage</b> HGR,TIE	<b>Repairs</b> N
<b>GPS</b> 155 Airport Rd	<b>Landing Fee</b> N	<b>Oxygen</b> N
<b>Address</b> Barnwell, SC 29812	<b>Lighting Sched</b> SEE RMK	<b>Fuel Type</b> 100LL, JET A, MOGAS
<b>Phone</b> (803) 259-1090	<b>Att Schedule</b> Daily 0900-1700	
<b>Fax</b> (803) 259-4596	<b>Remarks</b> RWY 5/23 in POOR condition	
<b>E-mail</b> barnwellairport@barnwellsc.com		MIRL Rwy. 17-35 dusk - 10:00pm, after 10:00pm-CTAF, ODALS RWY. 17 -CTAF. After-hrs access bldg via keypad (instructions on keypad). Ramp access via unlocked pedestrian gate. SELF SERVICE MOGAS, 100LL and Jet-A
<b>FBO Phone/Fax</b>		

## 12/30/2021

**Longitude:**

80° 38' 03.6750" W



Mag Var - 07° W

Runway						Edge	Approach	Traffic
ID	Length	Width	Surface	VGSI	REILS	Lights	Lights	Pattern
07/25	3434'	75'	ASPH	07/25	25	MED		07 - RH

Runway Pavement Strength					Navigation			
Runway	SW	DW	DTW	DDTW	IDENT	Type	FREQ	Direct/Dist
07/25	35.0	52.0			SAV	VORTAC	115.95	r067° 32.8 NM to fld

Communications				ATC		AWOS/ASOS	
Unicom	CTAF	GCO	RCO	FREQ	FAA ID	FREQ	Phone
122.700	122.700	121.725		125.125	NBC	119.675	(843) 524-1000

**Manager** Paul Dolin  
**GPS** 39 Airport Circle  
**Address** Beaufort, SC 29907  
**Phone** (843) 255-2972

**Fax**  
**E-mail** Paul.Dolin@bcgov.net  
**FBO Phone/Fax**

<b>Storage</b>	TIE	<b>Repairs</b>	N
<b>Landing Fee</b>	N	<b>Oxygen</b>	N
<b>Lighting Sched</b>	SEE RMK	<b>Fuel Type</b>	100LL, JET A

<b>Att Schedule</b>	Daily 0800-1800
<b>Remarks</b>	MIRL PRESET LOW INTST; INCR INTST - CTAF. AFTR-HRS RAMP ACCESS PED GATE. 24/7 TERMINAL ACCESS AFTR-HRS FEE CALLOUT W/48HR NOTICE. SELF SERVE 100LL

**BENNETTSVILLE - 8**

**Latitude:** 34° 37' 18.1510" N

**Longitude:** 79° 44' 03.6940" W



Mag Var - 08° W

Runway						Edge	Approach	Traffic
ID	Length	Width	Surface	VGSI	REILS	Lights	Lights	Pattern
07/25	5003'	74'	ASPH	07/25	07/25	MED		Standard

Runway Pavement Strength					Navigation			
Runway	SW	DW	DTW	DDTW	IDENT	Type	FREQ	Direct/Dist
07/25	28.0	43.0	70.0		BES FLO	NDB VORTAC	230 115.20	at fld r354° 23.6 NM to fld

Communications				ATC		AWOS/ASOS	
Unicom	CTAF	GCO	RCO	FREQ	FAA ID	FREQ	Phone
122.800	122.800			118.6	FLO	123.825	(843) 479-5817

Repairs N

Oxygen N

Fuel Type 100LL, JET A

MON-SAT 0800-1700 / SUN 1300-1700

Remarks	\$75 fee for fuel after hrs. 843-439-1269
---------	---

Remarks	\$75 fee for fuel after hrs. 843-439-1269
---------	---

Remarks	\$75 fee for fuel after hrs. 843-439-1269
---------	---

Remarks	\$75 fee for fuel after hrs. 843-439-1269
---------	---

(843) 479-4797



CHARLOTTE SECTIONAL  
12/30/2021

**Latitude:** 34° 14' 40.1460" N  
**Longitude:** 80° 14' 09.7210" W



Mag Var - 08° W

Runway					Edge	Approach	Traffic
ID	Length	Width	Surface	VGSI	REILS	Lights	Lights
06/24	3200'	60'	ASPH	06/24		MED	Standard

Runway Pavement Strength					Navigation			
Runway	SW	DW	DTW	DDTW	IDENT	Type	FREQ	Direct/Dist
06/24	12.5	25.0			CTF	VOR/DME	108.20	r178° 24.4 NM to fld

Communications				ATC		AWOS/ASOS	
Unicom	CTAF	GCO	RCO	FREQ	FAA ID	FREQ	Phone

122.900

**Manager** George Roberts  
**GPS** 145 Airport Rd  
**Address** Bishopville, SC 29010  
**Phone** (803) 229-2679  
**Fax**  
**E-mail** mwatkins1@sc.rr.com  
**FBO Phone/Fax**

<b>Storage</b>	TIE	<b>Repairs</b>	N
<b>Landing Fee</b>	N	<b>Oxygen</b>	N
<b>Lighting Sched</b>	SEE RMK	<b>Fuel Type</b>	100LL

Att Schedule	UNATTENDED
Remarks	BCN - SS to SR, PAPI - SR to SS NIGHT ACTVT PAPI/MIRL W CTAF PCL SELF SERVICE 100LL



CHS - CHARLESTON AFB/INTL

CHARLESTON - 11

CHARLOTTE SECTIONAL  
12/30/2021

Latitude: 32° 53' 55.1000" N  
Longitude: 80° 02' 25.9000" W



Elevation - 46' MSL

Mag Var - 07° W

Runway					Edge		Approach	Traffic	
ID	Length	Width	Surface	VGSI	REILS	Lights	Lights	Pattern	
03/21	7000'	150'	CONC	03/21	03/21	HIGH		Standard	
15/33	9001'	150'	CONC	15/33		HIGH	15/33	Standard	
Runway Pavement Strength					Navigation				
Runway	SW	DW	DTW	DDTW	IDENT	Type	FREQ	Direct/Dist	
03/21					CH	NDB	329	r153° 5.5 NM to fld	
15/33					CHS	VORTAC	113.50	at fld	
Communications			ATIS	ATC		RCO	APP/DEP	AWOS/ASOS	
Tower	GRND	CL DEL	FREQ	FREQ	FAA ID	FREQ	BRNG/FREQ	FREQ	Phone
126.0	121.9	127.325	124.75	120.7	CHS	122.1R 113.5T		N/A	(843) 554-9862

Manager Elliott Summey  
GPS 5500 International Blvd  
Address Charleston, SC 29418  
Phone (843) 767-7000  
Fax  
E-mail esummey@iflychs.com

FBO Phone/Fax  
Signature Flight Support  
(843) 414-9200  
Atlantic Aviation Services  
(843) 746-7600 (843) 746-7642

Storage HGR,TIE  
Landing Fee N  
Lighting Sched  
Repairs Y  
Oxygen Y  
Fuel Type 100, A1+

Att Schedule 24/7  
Remarks 24 HR Tower - Class C Airspace  
No student touch & go's allowed  
Intensive military operations  
ARINC 129.375 (Atlantic Aviation )  
131.625 (Signature )  
Noise Abatement Procedures  
Ramp Fee; Unicom 122.95



**JZI - CHARLESTON EXECUTIVE**

CHARLOTTE SECTIONAL

12/30/2021

**CHARLESTON - 12**

Latitude: 32° 42' 03.7000" N

Longitude: 80° 00' 11.7000" W



Elevation - 19' MSL

Mag Var - 08° W

Runway					Edge		Approach	Traffic
ID	Length	Width	Surface	VGSI	REILS	Lights	Lights	Pattern
04/22	4313'	150'	CONC			MED		Standard
09/27	5350'	100'	CONC	09/27	09/27	HIGH		Standard

Runway Pavement Strength					Navigation			
Runway	SW	DW	DTW	DDTW	IDENT	Type	FREQ	Direct/Dist
04/22	45.0	56.0			CHS	VORTAC	113.50	r176° 11.7 NM to fld
09/27	60.0	100.0						

Communications				ATC		AWOS/ASOS	
Unicom	CTAF	GCO	RCO	FREQ	FAA ID	FREQ	Phone
122.800	122.800		119.85	120.7	CHS	123.775	(843) 559-3123

Manager Elliott Summey

GPS 2742 Fort Trenholm Rd

Address Charleston, SC 29455

Phone (843) 767-7000

Fax

E-mail esummey@iflychs.com

FBO Phone/Fax

Atlantic Aviation

(843) 559-2401

Storage

HGR,TIE

Repairs Y

Landing Fee

N

Oxygen N

Lighting Sched

SEE RMK

Fuel Type 100LL, JET A

Att Schedule Daily 0600-2200

Remarks

ACTVT MIRL RWY 04/22 &amp; HIRL RWY

09/27 - CTAF. RAMP FEE

After Hours access 843-746-7600

CLNC DEL 119.85

**CHERAW - 13**

**Latitude:** 34° 42' 46.3000" N

**Longitude:** 79° 57' 25.2000" W



Mag Var - 08° W

Runway					Edge	Approach	Traffic
ID	Length	Width	Surface	VGSI	REILS	Lights	Lights
08/26	5000'	75'	ASPH		08/26	MED	Standard

Runway Pavement Strength					Navigation			
Runway	SW	DW	DTW	DDTW	IDENT	Type	FREQ	Direct/Dist
08/26	30.0	48.0			CTF	VOR/DME	108.20	r080° 16.1 NM to fld

Communications				ATC		AWOS/ASOS	
Unicom	CTAF	GCO	RCO	FREQ	FAA ID	FREQ	Phone
122.800	122.800			118.6	FLO	124.825	(843) 537-3301

**Manager** Wendell Hall  
**GPS** 197 Janice Circle  
**Address** Cheraw, SC 29520  
**Phone** (843) 537-6423  
**Fax**  
**E-mail** halljet@hotmail.com  
**FBO Phone/Fax**  
Hall Aviation  
(843) 537-6423

Storage	TIE	Repairs	Y
Landing Fee	N	Oxygen	N
Lighting Sched	SEE RMK	Fuel Type	100LL, JET A

**Att Schedule M-F 0800-1700 SAT 0800-1300 SUN 1330-1700**

Remarks	ACTVT MIRL - CTAF. REIL out of service indefinitely For fuel after hours (fee) - 843-537-9436 OR 843-622-5547
---------	--



DCM - CHESTER CATAWBA RGNL  
CHARLOTTE SECTIONAL  
12/30/2021

CHESTER - 14  
Latitude: 34° 47' 21.6000" N  
Longitude: 81° 11' 44.8000" W



Elevation - 657' MSL

Mag Var - 07° W

Runway					Edge		Approach	Traffic
ID	Length	Width	Surface	VGSI	REILS	Lights	Lights	Pattern
05/23	4998'	100'	ASPH					05 - RH
17/35	5000'	100'	ASPH	17/35		MED		17 - RH
Runway Pavement Strength					Navigation			
Runway	SW	DW	DTW	DDTW	IDENT	Type	FREQ	Direct/Dist
05/23	4.0	12.0			DCM	NDB	220	at fld
17/35	30.0	44.0			CLT	VORTAC	115.00	r212° 26.9 NM to fld
Communications				ATC		AWOS/ASOS		
Unicom	CTAF	GCO	RCO	FREQ	FAA ID	FREQ	Phone	
122.700	122.700			120.05	CLT	120.975	(803) 385-2011	

Manager Keith Roach  
GPS 1854A Piper Dr  
Address Chester, SC 29706  
Phone (803) 385-6664  
Fax (803) 385-6664  
E-mail chesterairport@gmail.com

FBO Phone/Fax  
Chester-Catawba Regional  
(803) 385-6664 (803) 385-6664

Storage HGR,TIE  
Landing Fee N  
Lighting Sched SEE RMK  
Repairs N  
Oxygen N  
Fuel Type 100LL, JET A

Att Schedule M-SAT 0900-1800 SUN1300-1800  
Remarks REQUEST NO MID-FIELD FLY-OVER DUE TO PARACHUTE ACTIVITY  
SKYDIVE CAROLINA 803-581-5867  
ACTVT MIRL RWY 17/35 AND PAPI RWYS 17 & 35 - CTAF.  
RAMP ACCESS USE AWOS FREQ.  
FULL & SELF SERVICE 100LL & JET A

**CLEMSON - 15**

**Latitude:** 34° 40' 20.0000" N  
**Longitude:** 82° 53' 09.2000" W



Mag Var - 06° W

Runway					Edge	Approach	Traffic
ID	Length	Width	Surface	VGSI	REILS	Lights	Lights
07/25	5000'	100'	ASPH	07/25	07/25	MED	07 - RH

Runway Pavement Strength					Navigation			
Runway	SW	DW	DTW	DDTW	IDENT	Type	FREQ	Direct/Dist
07/25	28.5	44.0			ODF	VORTAC	113.40	r94° 20.4 NM to fld

Communications				ATC		AWOS/ASOS	
Unicom	CTAF	GCO	RCO	FREQ	FAA ID	FREQ	Phone
122.700	122.700			118.8	GSP	119.275	(864) 653-8855

<b>Storage</b>	HGR,TIE	<b>Repairs</b>	Y
<b>Landing Fee</b>	N	<b>Oxygen</b>	N
<b>Lighting Sched</b>	SEE RMK	<b>Fuel Type</b>	100LL, JET A

<b>Att Schedule</b>	MON-SAT 0800-1800/SUN 0900-1700
<b>Remarks</b>	ACFT MAY BE OPERATING W-NW FROM A PRIVATE AIRPORT. ACTVT MIRL RWY 07/25 - CTAF. KEYPAD ACCESS AFTER HRS. CALL 864-882-2959 NDB OUT OF SERVICE. SELF SERVICE 100LL

**FBO Phone/Fax**  
Oconee County Aviation  
(864) 882-2959

## CLIO - 16

**Latitude:** 34° 33' 41.1000" N  
**Longitude:** 79° 32' 17.1000" W



Mag Var - 08° W

Runway					Edge	Approach	Traffic
ID	Length	Width	Surface	VGSI	REILS	Lights	Lights
05/23	2598'	125'	TURF				Standard

Runway Pavement Strength					Navigation			
Runway	SW	DW	DTW	DDTW	IDENT	Type	FREQ	Direct/Dist
05/23					FLO	VORTAC	115.20	r020° 20.6 NM to fld

Communications				ATC		AWOS/ASOS	
Unicom	CTAF	GCO	RCO	FREQ	FAA ID	FREQ	Phone
122.900							

Storage	TIE	Repairs	Y
Landing Fee	N	Oxygen	N
Lighting Sched		Fuel Type	N

Att Schedule MON-FRI 0800-DUSK/ SAT 0800-1200  
Remarks Private Apt. - Public Use



CAE - COLUMBIA METROPOLITAN  
CHARLOTTE SECTIONAL  
12/30/2021

COLUMBIA - 17  
Latitude: 33° 56' 19.8160" N  
Longitude: 81° 07' 10.3300" W



Elevation - 236' MSL

Mag Var - 07° W

Runway					Edge		Approach	Traffic
ID	Length	Width	Surface	VGSI	REILS	Lights	Lights	Pattern
05/23	8001'	150'	ASPH-CONC	05/23	23	HIGH	05	Standard
11/29	8601'	150'	CONC	11/29		HIGH	11/29	Standard
H1	50'	50'	CONC			PERI		

Runway Pavement Strength					Navigation			
Runway	SW	DW	DTW	DDTW	IDENT	Type	FREQ	Direct/Dist
05/23	100.0	200.0	355.0	675.0	CAE	VORTAC	114.70	r328° 5.9 NM to fld
11/29	72.0	225.0	409.0	700.0				

Communications			ATIS	ATC		RCO	APP/DEP		AWOS/ASOS	
Tower	GRND	CL DEL	FREQ	FREQ	FAA ID	FREQ	BRNG/FREQ	FREQ	Phone	
119.5	121.9	119.75	120.15	119.5	CAE	122.65	110° - 289° 124.15 290° - 109° 133.4	N/A	(803) 822-4168	

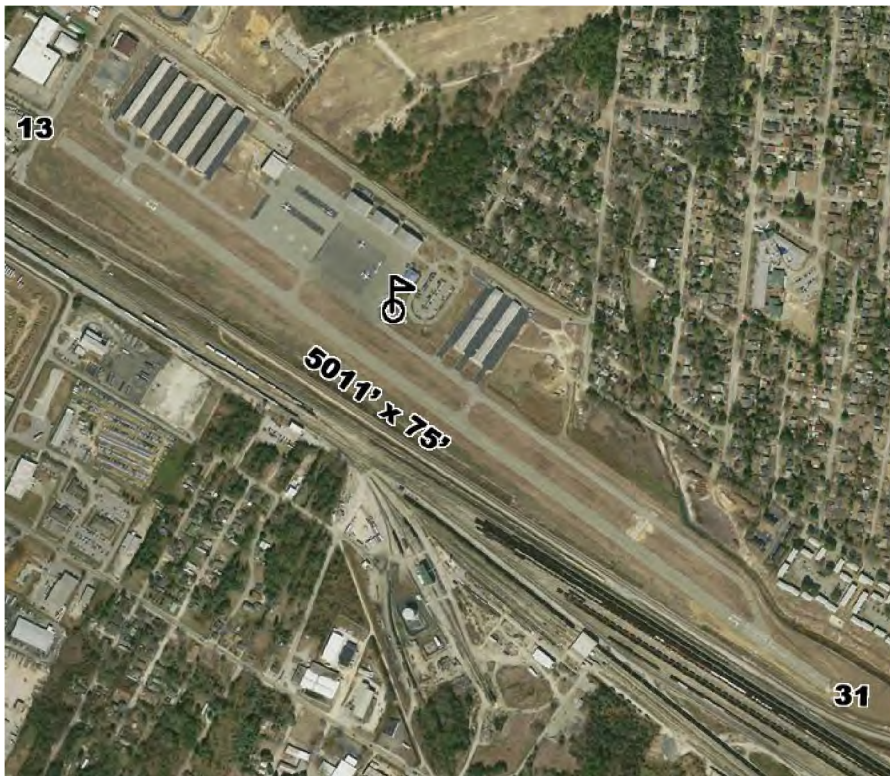
<b>Manager</b> Michael Gula	<b>Storage</b> HGR,TIE	<b>Repairs</b> Y
<b>GPS</b> 3250 Airport Blvd	<b>Landing Fee</b> N	<b>Oxygen</b> Y
<b>Address</b> Columbia, SC 29170	<b>Lighting Sched</b> SS-SR	<b>Fuel Type</b> 100LL, JET A
<b>Phone</b> (803) 822-5017	<b>Att Schedule</b> 24/7	
<b>Fax</b> (803) 822-5141	<b>Remarks</b>	
<b>E-mail</b> m.gula@flycae.com		
<b>FBO Phone/Fax</b>		
Eagle Aviation		
(803) 822-5569 (803) 822-5529		
Bankair/Columbia Aviation		
(803) 822-8332 (803) 822-8775		

FEE FOR COMMERCIAL AIRCRAFT ABOVE 15K lbs.  
ULTRALIGHTS PROHIBITED  
NOISE ABATEMENT PROCEDURES  
UNICOM 122.95  
24 HR TOWER - CLASS C AIRSPACE  
RWY 23 1000' DSPLED THLD  
RAMP FEE

**COLUMBIA - 18**

**Latitude:** 33° 58' 13.7000" N

**Longitude:** 80° 59' 42.9000" W



Mag Var - 07° W

Runway					Edge	Approach	Traffic
ID	Length	Width	Surface	VGSI	REILS	Lights	Pattern
13/31	5011'	75'	ASPH	13/31	13/31	MED	13 - RH

Runway Pavement Strength					Navigation			
Runway	SW	DW	DTW	DDTW	IDENT	Type	FREQ	Direct/Dist
13/31	44.5	66.0			CAE	VORTAC	114.70	r025° 7.4 NM to fld

Communications				ATC		AWOS/ASOS	
Unicom	CTAF	GCO	RCO	FREQ	FAA ID	FREQ	Phone
123.075	123.075		124.4	133.4	CAE	118.675	(803) 929-0665

Repairs Y

Oxygen Y

**Fuel Type** 100LL, JET A

**Att Schedule**    Daily 0600-2200

Remarks

Avoid noise sensitive area north of airport  
below 1500'.  
No northbound departure turn below 1500'.  
APU available. Ramp Fee  
Service after hours 803-771-7915  
RWY 31 has 400' displaced threshold  
ACTVT MRL AND REIL - CTAF  
COMPASS CAL PAD  
[www.FlyKCUB.com](http://www.FlyKCUB.com)

below 1500'.  
No northbound departure turn below 1500'.  
APU available. Ramp Fee  
Service after hours 803-771-7915  
RWY 31 has 400' displaced threshold  
ACTVT MRL AND REIL - CTAF  
COMPASS CAL PAD  
[www.FlyKCUB.com](http://www.FlyKCUB.com)

No northbound departure turn below 1500'.  
APU available. Ramp Fee  
Service after hours 803-771-7915  
RWY 31 has 400' displaced threshold  
ACTVT MIRL AND REIL - CTAF  
COMPASS CAL PAD  
[www.FlyKCUB.com](http://www.FlyKCUB.com)

APU available. Ramp Fee  
Service after hours 803-771-7915  
RWY 31 has 400' displaced threshold  
ACTVT MIRL AND REIL - CTAF  
COMPASS CAL PAD  
[www.FlyKCUB.com](http://www.FlyKCUB.com)

Service after hours 803-771-7915  
RWY 31 has 400' displaced threshold  
ACTVT MIRL AND REIL - CTAF  
COMPASS CAL PAD  
[www.FlyKCUB.com](http://www.FlyKCUB.com)

RWY 31 has 400 displaced threshold  
ACTVT MIRL AND REIL - CTAF  
COMPASS CAL PAD  
[www.FlyKCUB.com](http://www.FlyKCUB.com)

ACTIVITY MIRE AND REEL - CTAF  
COMPASS CAL PAD  
[www.FlyKCUB.com](http://www.FlyKCUB.com)

COMPLASSCARTAD  
www.FlyKCUB.com

**CONWAY - 19**

**Latitude:** 33° 49' 42.5550" N

**Longitude:** 79° 07' 19.8348" W



Mag Var - 09° W

Runway					Edge	Approach	Traffic
ID	Length	Width	Surface	VGSI	REILS	Lights	Lights
04/22	4401'	75'	ASPH	04/22	04/22	MED	Standard

Runway Pavement Strength					Navigation			
Runway	SW	DW	DTW	DDTW	IDENT	Type	FREQ	Direct/Dist
04/22	12.5	20.0			HYW	NDB	370	at fld
					CRE	VORTAC	114.40	r276° 19.8 NM to fld

Communications				ATC		AWOS/ASOS	
Unicom	CTAF	GCO	RCO	FREQ	FAA ID	FREQ	Phone
122.700	122.700			127.4	MYR	119.525	(843) 397-8046

<b>Manager</b>	Scott VanMoppes
<b>GPS</b>	1700 Airport Road
<b>Address</b>	Conway, SC 29527
<b>Phone</b>	(843) 448-1580
<b>Fax</b>	(843) 626-9096
<b>E-mail</b>	vanmoppes@horrycounty.org

**FBO Phone/Fax**  
Beach Aviation Services  
(843) 397-9111      (843) 397-3776

<b>Storage</b>	TIE	<b>Repairs</b>	Y
<b>Landing Fee</b>	N	<b>Oxygen</b>	N
<b>Lighting Sched</b>	SEE RMK	<b>Fuel Type</b>	100LL, JET A, A+
<b>Att Schedule</b>	Daily 0900-1700		
<b>Remarks</b>	ACTVT MIRL - CTAf After Hours access gate use Unicom SELF SERVICE 100LL, JET A		



**6J7 - BRANHAMS**  
 CHARLOTTE SECTIONAL  
 12/30/2021

**DARLINGTON - 20**  
 Latitude: 34° 16' 53.5000" N  
 Longitude: 79° 55' 39.4000" W



Elevation - 166' MSL
 Mag Var - 08° W

Runway					Edge	Approach	Traffic
ID	Length	Width	Surface	VGSI	REILS	Lights	Pattern
16/34	3200'	100'	TURF	16/34		LOW	16 - RH

Runway Pavement Strength					Navigation			
Runway	SW	DW	DTW	DDTW	IDENT	Type	FREQ	Direct/Dist
16/34					FLO	VORTAC	115.20	r285° 13.7 NM to fld

Communications				ATC		AWOS/ASOS	
Unicom	CTAF	GCO	RCO	FREQ	FAA ID	FREQ	Phone
				122.900			

Manager Dwayne Weatherford  
 GPS 1829 Hospitality Trail  
 Address Darlington, SC 29532  
 Phone (843) 307-0070  
 Fax  
 E-mail dw12sc@aol.com  
 FBO Phone/Fax

Storage TIE  
 Landing Fee N  
 Lighting Sched SEE RMK  
 Repairs Y  
 Oxygen N  
 Fuel Type N  
 Att Schedule UNATTENDED  
 Remarks ACTIVATE LIRL and VGSI - CTAF.  
 Private Apt. - Public Use

CHARLOTTE SECTIONAL  
12/30/2021

DARLINGTON - 21

**Latitude:** 34° 26' 50.9600" N  
**Longitude:** 79° 53' 11.1270" W



**Elevation - 192' MSL**

Mag Var - 08° W

Runway					Edge		Approach	Traffic
ID	Length	Width	Surface	VGSI	REILS	Lights	Lights	Pattern
05/23	5500'	100'	CONC	05/23	05/23	MED	05	Standard

Runway Pavement Strength					Navigation			
Runway	SW	DW	DTW	DDTW	IDENT	Type	FREQ	Direct/Dist
05/23	17.0	27.0			FLO	VORTAC	115.20	r322° 17.2 NM to fld

Communications				ATC		AWOS/ASOS	
Unicom	CTAF	GCO	RCO	FREQ	FAA ID	FREQ	Phone
123.000	123.000	118.55		118.6	FLO	119.925	(843) 393-8220

**Manager** Barry Kennett  
**GPS** 313 G Graham Segars Pkwy  
**Address** Darlington, SC 29540  
**Phone** (843) 393-9928  
**Fax** (843) 393-9930  
**E-mail** bkennett@darcosc.net  
**FBO Phone/Fax**

<b>Storage</b>	HGR,TIE	<b>Repairs</b>	N
<b>Landing Fee</b>	N	<b>Oxygen</b>	N
<b>Lighting Sched</b>	SEE RMK	<b>Fuel Type</b>	100LL, JET A

**Att Schedule MON-FRI/0800-1700**

Remarks	RWY & TWY lights preset to low intensity; after 2300, use CTAF. After hours access through unlocked pedestrian gate. SELF SERVICE 100LL.
---------	--



DILLON - 22

**Latitude:** 34° 26' 56.6000" N  
**Longitude:** 79° 22' 06.9000" W



**Elevation - 133' MSL**

Mag Var - 09° W

Runway						Edge	Approach	Traffic
ID	Length	Width	Surface	VGSI	REILS	Lights	Lights	Pattern
07/25	3000'	60'	ASPH			MED		Standard

Runway Pavement Strength					Navigation			
Runway	SW	DW	DTW	DDTW	IDENT	Type	FREQ	Direct/Dist
07/25	10.0				FLO	VORTAC	115.20	r051° 19.3 NM to fld

Communications				ATC		AWOS/ASOS	
Unicom	CTAF	GCO	RCO	FREQ	FAA ID	FREQ	Phone
	122.900			118.6	FLO		

<b>Manager</b> Tony Caulder	<b>Storage</b> TIE	<b>Repairs</b> N
<b>GPS</b> 1088 Airport Rd	<b>Landing Fee</b> N	<b>Oxygen</b> N
<b>Address</b> Dillon, SC 29536	<b>Lighting Sched</b> SS-SR	<b>Fuel Type</b> N
<b>Phone</b> (843) 774-1449		
<b>Fax</b> (843) 774-1443	<b>Att Schedule</b> UNATTENDED	
<b>E-mail</b> tcaulder@dilloncountysc.org	<b>Remarks</b> RWY 7/25 in fair condition	
<b>FBO Phone/Fax</b>		



Elevation - 147' MSL

Mag Var - 08° W

Runway					Edge		Approach	Traffic
ID	Length	Width	Surface	VGSI	REILS	Lights	Lights	Pattern
01/19	5000'	150'	ASPH	01/19	01/19	MED		Standard
09/27	6502'	150'	ASPH	09/27	27	HIGH	09	Standard

Runway Pavement Strength					Navigation			
Runway	SW	DW	DTW	DDTW	IDENT	Type	FREQ	Direct/Dist
01/19	87.0	139.0	238.0		FLO	VORTAC	115.20	r232° 4.4 NM to fld
09/27	97.0	156.0	261.0					

Communications			ATIS		ATC		RCO	APP/DEP		AWOS/ASOS	
Tower	GRND	CL DEL	FREQ	FREQ	FAA ID	FREQ	FREQ	BRNG/FREQ	FREQ	Phone	
125.1	121.9	121.9	123.625	125.1	FLO	122.6		75-255/135.25 256-074/118.6	123.625	(843) 665-1306	

Manager Connie Anderson

GPS 2100 Terminal Drive

Address Florence, SC 29506

Phone (843) 519-0552

Fax (843) 665-4751

E-mail canderson@flyflo.us

FBO Phone/Fax Precision Air

(843) 667-9627

Storage HGR,TIE

Landing Fee N

Lighting Sched SEE RMK

Att Schedule Daily 0600-2000

Remarks Class "D" airspace 0630-2200 other times class" E"  
ASR - 0630-2200  
Unicom - 122.95  
WHEN Tower CLSD ACTVT HIRL RWY  
09/27, PAPI RWYS 01, 19, 09 & 27, MALSR  
RWY 09 AND TWY LGTS - CTAF.

Repairs Y

Oxygen Y

Fuel Type 100LL, JET A

GGE - GEORGETOWN COUNTY  
CHARLOTTE SECTIONAL  
12/30/2021

GEORGETOWN - 24  
Latitude: 33° 18' 41.1000" N  
Longitude: 79° 19' 13.1000" W



Elevation - 40' MSL						Mag Var - 08° W			
Runway					Edge	Approach		Traffic	
ID	Length	Width	Surface	VGSI	REILS	Lights	Lights	Pattern	
05/23	6005'	100'	ASPH	05/23	05	MED	05	Standard	
11/29	4539'	150'	ASPH			MED		Standard	
Runway Pavement Strength					Navigation				
Runway	SW	DW	DTW	DDTW	IDENT	Type	FREQ	Direct/Dist	
05/23	40.0	60.0			CHS	VORTAC	113.50	r061° 44 NM to fld	
11/29	20.0	30.0							
Communications				ATC		AWOS/ASOS			
Unicom	CTAF	GCO	RCO	FREQ	FAA ID	FREQ	Phone		
123.000	123.000	121.725		127.4	MYR	118.275	(843) 527-3851		
Manager Jim Taylor				Storage		HGR,TIE		Repairs Y	
GPS 129 Airport Rd				Landing Fee		N		Oxygen Y	
Address Georgetown, SC 29440				Lighting Sched		SEE RMK		Fuel Type 100LL, JET A	
Phone (843) 545-3638									
Fax				Att Schedule		Daily 0700-2100			
E-mail jtaylor@gtcounty.org				Remarks		RWY 11/29 in poor condition			
FBO Phone/Fax				RWY 11-29 lights - CTAF					
Seven Rivers Aviation				RWY 5-23 lights - Dusk-Dawn					
(843) 527-7516 (843) 527-8017				RAMP FEE After hours access gate via 4 digit Unicom freq.					



**GRANITEVILLE - 25**

**Latitude:** 33° 38' 44.4890" N  
**Longitude:** 81° 52' 01.4030" W



Mag Var - 07° W

Runway						Edge	Approach	Traffic
ID	Length	Width	Surface	VGSI	REILS	Lights	Lights	Pattern
06/24	4000'	60'	ASPH			NSTD		Standard

Runway Pavement Strength					Navigation			
Runway	SW	DW	DTW	DDTW	IDENT	Type	FREQ	Direct/Dist
06/24	12.5				IRQ	VORTAC	113.90	r108° 15.2 NM to fld

Communications				ATC		AWOS/ASOS	
Unicom	CTAF	GCO	RCO	FREQ	FAA ID	FREQ	Phone

122.900

## Storage

Repairs	N
---------	---

N

Landing Fee N

Oxygen N

N

Lighting Sched SEE RMK

Fuel Type N

### Engineering Center

Att Schedule UNATTENDED

Remarks

FBO Phone/Fax

RWY. 6 displaced thld. 636'  
Flying Community/Airpark  
Runway CLOSED DUSK-DAWN

CHARLOTTE SECTIONAL  
12/30/2021

GREEN SEA - 26

**Latitude:** 34° 11' 08.0000" N  
**Longitude:** 79° 01' 14.1150" W



Mag Var - 09° W

Runway					Edge	Approach	Traffic
ID	Length	Width	Surface	VGSI	REILS	Lights	Lights
08/26	3600'	100'	TURF				
09/27	3600'	100'	TURF				

Runway Pavement Strength					Navigation			
Runway	SW	DW	DTW	DDTW	IDENT	Type	FREQ	Direct/Dist
08/26					CRE	VORTAC	117.60	r330° 26.7 NM to fld
09/27								

Communications				ATC		AWOS/ASOS	
Unicom	CTAF	GCO	RCO	FREQ	FAA ID	FREQ	Phone
122.900							

<b>Manager</b>	Cody Herring	<b>Storage</b>	TIE	<b>Repairs</b>	N
<b>GPS</b>	3333 Mt Olive Church Rd	<b>Landing Fee</b>		<b>Oxygen</b>	N
<b>Address</b>	Green Sea, SC 29568	<b>Lighting Sched</b>		<b>Fuel Type</b>	N
<b>Phone</b>	(843) 230-0362				
<b>Fax</b>		<b>Att Schedule</b>	UNATTENDED		
<b>E-mail</b>	cody.herring@corteva.com	<b>Remarks</b>	Private Apt. - Public Use		
<b>FBO Phone/Fax</b>					

GMU - GREENVILLE DOWNTOWN

ATLANTA SECTIONAL  
12/30/2021

GREENVILLE - 27

Latitude: 34° 50' 52.6000" N  
Longitude: 82° 21' 00.0000" W



Elevation - 1048' MSL

Mag Var - 07° W

Runway					Edge	Approach	Traffic
ID	Length	Width	Surface	VGSI	REILS	Lights	Pattern
01/19	5393'	100'	ASPH	01/19	19	HIGH	19 - RH
10/28	4000'	80'	ASPH	28	28	MED	28 - RH
H1	50'	50'	CONC			PERI	
H2	50'	50'	CONC			PERI	

Runway Pavement Strength					Navigation			
Runway	SW	DW	DTW	DDTW	IDENT	Type	FREQ	Direct/Dist
01/19	61.0	81.0	151.0		SPA	VORTAC	115.70	r244° 23.6 NM to fld
10/28	43.5	62.0						

Communications			ATIS	ATC		RCO	APP/DEP	AWOS/ASOS	
Tower	GRND	CL DEL	FREQ	FREQ	FAA ID	FREQ	BRNG/FREQ	FREQ	Phone
119.9	121.25		127.075	118.8	GSP			127.075	(864) 239-0014

**Manager** Joseph R. Frasher  
**GPS** 100 Tower Dr  
**Address** Greenville, SC 29607  
**Phone** (864) 242-4777  
**Fax** (864) 242-4870  
**E-mail** joe@greenvilledowntownairport.com

**FBO Phone/Fax**  
Greenville Jet Center  
(864) 232-7100 (864) 235-6384

**Storage** HGR,TIE  
**Landing Fee** N  
**Lighting Sched** SEE RMK  
**Att Schedule** M-F 0600-2100 / S-S 0800-1700 FULL SERV  
S-S 1700-2000 LIMITED SERV  
**Remarks** Unicom 122.95, ATCT Operates 0700-2200  
CTAF/PCL 119.9 when ATCT CLSD.  
Class "D" Airspace 0700-2200,  
All oth tms Class "G"; RWY10Thld DISP 265';  
RWY 28 Thld DISP 270';  
IF ATCT CLSD, USE PCL HIRL RWY 01/19;  
MIRL RWY 10/28 U/S when tower closed  
FBO Ramp Fee; Restaurant No Ramp Fee;  
SELF SERVICE 100LL

**Repairs** Y  
**Oxygen** Y  
**Fuel Type** 100LL, JET A



# GYH - DONALDSON FIELD

ATLANTA SECTIONAL  
12/30/2021

GREENVILLE - 28

Latitude: 34° 45' 29.9000" N  
Longitude: 82° 22' 35.1000" W



Elevation - 956' MSL

Mag Var - 04° W

Runway					Edge	Approach	Traffic
ID	Length	Width	Surface	VGSI	REILS	Lights	Pattern
05/23	8000'	150'	CONC	05/23		HIGH	05 - RH

Runway Pavement Strength					Navigation			
Runway	SW	DW	DTW	DDTW	IDENT	Type	FREQ	Direct/Dist
05/23	94.0	121.0	199.0		SPA	VORTAC	115.70	r235° 27.6 NM to fld

Communications			ATIS	ATC		RCO	APP/DEP	AWOS/ASOS	
Tower	GRND	CL DEL	FREQ	FREQ	FAA ID	FREQ	BRNG/FREQ	FREQ	Phone
133.325	121.4	121.4		133.325	GYH			127.325	(864) 277-5674

Manager Danny Moyd

GPS 2 Exchange St

Address Greenville, SC 29605

Phone (864) 277-3152

Fax

E-mail danny.moyd@sc-tac.com

FBO Phone/Fax

AvServe

(864) 299-0314 (864) 299-0324

Donaldson Jet Center

(864) 277-8184 (864) 277-1159

Storage

Landing Fee

Lighting Sched

HGR,TIE

N

SEE RMK

Repairs

Oxygen

Fuel Type 100LL, JET A

Att Schedule

Remarks

Daily 0600-1900

Tower operates 0700-2100 Class D

Airspace. After hours Class G airspace

CTAF 133.325

Ramp Fee, Resturant

ACTVT HIRL RWY 05/23, PAPI RWYS 05 &

23, MALSR RWY 05 - CTAF.

AvServe after hours 864-299-0314.

Donaldson Jet Center After hours 864-277-8184. After-Hrs ramp access via monitored unlocked pedestrian gate.

ATLANTA SECTIONAL  
12/30/2021

**Latitude:** 34° 15' 01.4175" N  
**Longitude:** 82° 09' 28.1136" W



Mag Var - 07° W

Runway					Edge	Approach	Traffic
ID	Length	Width	Surface	VGSI	REILS	Lights	Pattern
05/23	3950'	60'	ASPH				Standard
09/27	5001'	100'	CONC	09/27	09/27	MED	27 Standard

Runway Pavement Strength					Navigation			
Runway	SW	DW	DTW	DDTW	IDENT	Type	FREQ	Direct/Dist
05/23					GRD	VORTAC	115.50	at fld
09/27	89.0	122.0						

Communications				ATC		AWOS/ASOS	
Unicom	CTAF	GCO	RCO	FREQ	FAA ID	FREQ	Phone
122.975	122.975		122.5	120.6	GSP	121.125 (864)	388-9115

**Manager** Rett Templeton  
**GPS Address** 598 Terminal Rd  
 Greenwood, SC 29649  
**Phone** (864) 942-8639  
**Fax** (864) 942-8580  
**E-mail** rett.templeton@greenw

Storage	TIE	Repairs	Y
Landing Fee	N	Oxygen	N
Lighting Sched	SEE RMK	Fuel Type	100LL, JET A

**Att Schedule M-F 0730-1800/SA0800-1700/SU1100-1700**

<b>Remarks</b>	Use CTAF for lights after 2300. After hours access via VOR freq.
----------------	---

**FBO Phone**  
Aeronautical Service of Greenwood  
(864) 942-9634  
(864) 910-2944



GSP - GREENVILLE SPARTANBURG INTL

ATLANTA SECTIONAL  
12/30/2021

GREER - 30

Latitude: 34° 53' 44.4160" N  
Longitude: 82° 13' 07.8940" W



Elevation - 964' MSL

Mag Var - 06° W

Runway					Edge	Approach	Traffic
ID	Length	Width	Surface	VGSI	REILS	Lights	Pattern
04/22	11001'	150'	ASPH-CONC	04/22		HIGH	04/22 04 - RH

Runway Pavement Strength					Navigation			
Runway	SW	DW	DTW	DDTW	IDENT	Type	FREQ	Direct/Dist
04/22	100.0	210.0	625.0	975.0	SPA	VORTAC	115.70	r242° 16.6 NM to fld

Communications			ATIS			ATC			RCO		APP/DEP		AWOS/ASOS	
Tower	GRND	CL DEL	FREQ	FREQ	FAA ID	FREQ	BRNG/FREQ	FREQ	Phone					
120.1	121.9	121.9	134.25	118.8W	GSP	122.2	West/118.8	N/A	(864) 879-0614					
				119.4E	GSP	122.65	East/119.4							

Manager	David Edwards	Storage	HGR,TIE	Repairs	Y
GPS	2000 GSP Dr	Landing Fee	N	Oxygen	Y
Address	Greer, SC 29651	Lighting Sched	SEE RMK	Fuel Type	100LL, JET A
Phone	(864) 848-6272	Att Schedule	ALL/ALL/ALL		
Fax	(864) 848-6225	Remarks	UNICOM 122.95		
E-mail	dedwards@gspairport.com		Tower operates 0600-2345		
FBO Phone/Fax			CTAF 120.1 WHEN tower CLSD.		
Cerulean Aviation			Class "C" airspace 0600 - 2345, other times class "E"		
(864) 655-5221	(864) 655-5222		WHEN Tower CLSD ACTVT HIRL & MALSR		
			RWY 22 - CTAF; ARFF Monitors CTAF		
			Ramp Fee.		

**HAMPTON - 31**

**Latitude:** 32° 51' 59.4000" N

**Longitude:** 81° 04' 51.6000" W



Mag Var - 07° W

Runway					Edge	Approach	Traffic
ID	Length	Width	Surface	VGSI	REILS	Lights	Lights
11/29	3580'	60'	ASPH				Standard

Runway Pavement Strength					Navigation			
Runway	SW	DW	DTW	DDTW	IDENT	Type	FREQ	Direct/Dist
11/29	8.0				SAV	VORTAC	115.95	r014° 43.5 NM to fld

Communications				ATC		AWOS/ASOS	
Unicom	CTAF	GCO	RCO	FREQ	FAA ID	FREQ	Phone
122.900							

**Manager** Dobie Hiers  
**GPS** 740 Airport Rd  
**Address** Varnville, SC 29944  
**Phone** (803) 914-0795

**E-mail** [dhiers@hamptoncountysc.org](mailto:dhiers@hamptoncountysc.org)

**FBO Phone/Fax**  
Hampton County Airport  
(803) 914-0795

Storage	Tie	Repairs	N
Landing Fee	N	Oxygen	N
Lighting Sched		Fuel Type	100LL, JET A

<b>Att Schedule</b>	Mon-Sat 0830-1750 Sun 1300-1750
<b>Remarks</b>	AFTER HRS CALL 803-942-2702 OR 803-943-8081 SELF SERVE 100LL and JET A 4 CLICKS ON CTAF FOR WX 3 CLICKS ON CTAF FOR WIND

CHARLOTTE SECTIONAL  
12/30/2021

HARTSVILLE - 32

**Latitude:** 34° 24' 11.1000" N  
**Longitude:** 80° 07' 09.2000" W



**Elevation - 364' MSL**

Mag Var - 08° W

Runway					Edge	Approach	Traffic
ID	Length	Width	Surface	VGSI	REILS	Lights	Lights
03/21	5000'	75'	ASPH	03/21		MED	03 - RH

Runway Pavement Strength					Navigation				
Runway	SW	DW	DTW	DDTW	IDENT	Type	FREQ	Direct/Dist	
03/21	16.0	25.5			CTF HVS	VOR/DME NDB	108.20 341	r156°	16.7 NM to fld at fld

Communications				ATC		AWOS/ASOS	
Unicom	CTAF	GCO	RCO	FREQ	FAA ID	FREQ	Phone
122.800	122.800			125.4	SSC	118.225	(843) 339-9625

**Manager** Mark DeFields  
**GPS** 1082 Hartsville Airport Rd  
**Address** Hartsville, SC 29550  
**Phone** (910) 284-3166  
**Fax**

**E-mail** mdefields@riseaero.com

**FBO Phone/Fax**  
**RISEAERO**  
**(910) 284-3166**

<b>Storage</b>	HGR,TIE	<b>Repairs</b>	Y
<b>Landing Fee</b>	N	<b>Oxygen</b>	N
<b>Lighting Sched</b>	SEE RMK	<b>Fuel Type</b>	100LL, JET A

**Att Schedule** M-F 0800-1700 SAT-SUN 0900-1700

Remarks	MIRL PRESET LOW INTSTY DUSK-2100; TO INCR INTSTY AND ACTVT MIRL AFTER 2100 - CTAF. Fuel after hrs. 843-383-1088
---------	--



## 12/30/2021

HILTON HEAD ISLAND - 33

**Longitude:** 80° 41' 50.6430" W



**Elevation - 19' MSL**

Mag Var - 07° W

Runway					Edge	Approach	Traffic
ID	Length	Width	Surface	VGSI	REILS	Lights	Lights
03/21	5000'	100'	ASPH	03/21	03/21	MED	Standard

Runway Pavement Strength						Navigation			
Runway	SW	DW	DTW	DDTW	IDENT	Type	FREQ	Direct/Dist	
03/21	55.0	75.0			SAV	VORTAC	115.95	r086° 25.9 NM to fld	
Communications			ATIS	ATC		RCO	APP/DEP	AWOS/ASOS	
Tower	GRND	CL DEL	FREQ	FREQ	FAA ID	FREQ	BRNG/FREQ	FREQ	Phone
118.975	121.1	121.1	121.4	125.3	SAV	122.55		121.400	(843) 342-5072

**Manager** Jon Rembold  
**GPS** 120 Beach City Rd  
**Address** Hilton Head Island, SC 29926  
**Phone** (843) 255-2952  
**Fax** 843-255-9424  
**E-mail** jrembold@bcgov.net

**FBO Phone/Fax**  
Signature Flight Support  
(843) 689-3200      (843) 681-3960

<b>Storage</b>	TIE	<b>Repairs</b>	Y
<b>Landing Fee</b>	N	<b>Oxygen</b>	N
<b>Lighting Sched</b>	SEE RMK	<b>Fuel Type</b>	100LL, JET A
<b>Att Schedule</b>	Daily 0600-2200		
<b>Remarks</b>	NOISE ABATEMENT PROCS. RAMP FEE. TOWER OPERATES 0700-2100 ACTVT MIRL AND REIL CTA# 118.975 AFTR-HRS ACCESS FEE BY PRIOR ARRRNGMNT 843-689-3200. EMAS RWY 3 AND RWY 21		

CHARLOTTE SECTIONAL  
12/30/2021

**Latitude:** 33° 18' 05.4900" N  
**Longitude:** 80° 23' 35.0900" W



Mag Var - 08° W

Runway					Edge	Approach	Traffic
ID	Length	Width	Surface	VGSI	REILS	Lights	Lights
04/22	3900'	75'	TURF				Standard

Runway Pavement Strength					Navigation			
Runway	SW	DW	DTW	DDTW	IDENT	Type	FREQ	Direct/Dist
04/22					VAN	VORTAC	110.40	r171° 10.8 NM to fld

Communications				ATC		AWOS/ASOS	
Unicom	CTAF	GCO	RCO	FREQ	FAA ID	FREQ	Phone
122.900							

**Manager** David Barber  
**GPS** 140 Airport Rd  
**Address** Holly Hill, SC 29059  
**Phone** (843) 514-4757  
**Fax**  
**E-mail** halidad1212@yahoo.com  
**FBO Phone/Fax**

Storage	TIE	Repairs	N
Landing Fee	N	Oxygen	N
Lighting Sched		Fuel Type	N
Att Schedule	UNATTENDED		
Remarks			

CHARLOTTE SECTIONAL  
12/30/2021

KINGSTREE - 35

**Latitude:** 33° 43' 02.0000" N  
**Longitude:** 79° 51' 25.1000" W



**Elevation - 66' MSL**

Mag Var - 08° W

Runway					Edge	Approach	Traffic
ID	Length	Width	Surface	VGSI	REILS	Lights	Lights
14/32	5000'	75'	ASPH	14/32		MED	Standard

Runway Pavement Strength					Navigation			
Runway	SW	DW	DTW	DDTW	IDENT	Type	FREQ	Direct/Dist
14/32	30.0	45.0			VAN	VORTAC	110.40	r070° 33 NM to fld

Communications				ATC		AWOS/ASOS	
Unicom	CTAF	GCO	RCO	FREQ	FAA ID	FREQ	Phone
122.700	122.700			127.4	MYR	124.775	(843) 382-3000

**Manager John Hudson**

**GPS** 85 Aviation Dr

**Address** Kingstree, SC 29556

**Phone** (843) 372-2255

**Fax** (843) 374-1287

**E-mail** fly2grace@gmail.com

FBO Phone/Fax

## Storage

**Landing Fee**

**Lighting Sched** SEE RMK

Att Schedule UNATTENDED

Remarks	ACTVT MIRL AND PAPI - CTAF. SELF SERVICE 100LL Expected March 2020
---------	---

Repairs	N
---------	---

Oxygen N

**Fuel Type** 100LL



CHARLOTTE SECTIONAL  
12/30/2021

**Latitude:** 33° 51' 12.8900" N  
**Longitude:** 79° 46' 05.2280" W



Mag Var - 08° W

Runway					Edge	Approach	Traffic
ID	Length	Width	Surface	VGSI	REILS	Lights	Lights
01/19	3700'	75'	ASPH	01/19		MED	Standard

Runway Pavement Strength					Navigation			
Runway	SW	DW	DTW	DDTW	IDENT	Type	FREQ	Direct/Dist
01/19	10.0				FLO	VORTAC	115.20	r197° 23.4 NM to fld

Communications				ATC		AWOS/ASOS	
Unicom	CTAF	GCO	RCO	FREQ	FAA ID	FREQ	Phone
	122.900			135.25	FLO		

**Manager** Dusan Fridl  
**GPS** 236 Clifton Rd  
**Address** Lake City, SC 29560  
**Phone** (843) 687-6490  
**Fax**  
**E-mail** dusanfridl@hotmail.com  
**FBO Phone/Fax**

<b>Storage</b>	TIE	<b>Repairs</b>	N
<b>Landing Fee</b>	N	<b>Oxygen</b>	N
<b>Lighting Sched</b>	SEE RMK	<b>Fuel Type</b>	N
<b>Att Schedule</b>	UNATTENDED		
<b>Remarks</b>	ACTVT MIRL - CTAF. RWY 1/19 IN FAIR CONDITION		

**LANCASTER - 37**

**Latitude:** 34° 43' 22.4558" N  
**Longitude:** 80° 51' 16.5243" W



Mag Var - 08° W

Runway					Edge	Approach	Traffic	
ID	Length	Width	Surface	VGSI	REILS	Lights	Lights	Pattern
06/24	6004'	101'	CONC	06/24	06/24	MED		Standard

Runway Pavement Strength					Navigation			
Runway	SW	DW	DTW	DDTW	IDENT	Type	FREQ	Direct/Dist
06/24	44.0	60.0	118.0		LKR	NDB	400	at fld
					CLT	VORTAC	115.00	r175° 28.4 NM to fld

Communications				ATC		AWOS/ASOS	
Unicom	CTAF	GCO	RCO	FREQ	FAA ID	FREQ	Phone
122.725	122.725	121.725		120.05	CLT	120.825	(803) 286-6444

<b>Storage</b>	HGR,TIE	<b>Repairs</b>	N
<b>Landing Fee</b>	N	<b>Oxygen</b>	N
<b>Lighting Sched</b>	SEE RMK	<b>Fuel Type</b>	100LL, JET A

<b>Att Schedule</b>	M-F 0700-1500
<b>Remarks</b>	ACTVT MIRL - CTAF RAMP FEE may be waived based on AC size and/or fuel purchased TERMINAL ACCESS KEYPAD FIRST FIVE DIGITS UNICOM PLUS ASTERISK KEY. SELF SERVICE 100LL and JET A

## LANCASTER - 38

**Latitude:** 34° 40' 27.5410" N  
**Longitude:** 80° 40' 56.2470" W



**Mag Var - 08° W**

Runway						Edge	Approach	Traffic
ID	Length	Width	Surface	VGSI	REILS	Lights	Lights	Pattern
05W/23W	4400'	300'	WATER					Standard
11W/29W	2245'	600'	WATER					Standard
15/33	2600'	40'	ASPH			LOW		Standard
16W/34W	3000'	300'	WATER					Standard

Runway Pavement Strength					Navigation			
Runway	SW	DW	DTW	DDTW	IDENT	Type	FREQ	Direct/Dist
05W/23W					CTF	VOR/DME	108.20	r277° 20.2 NM to fld
11W/29W								
15/33	8.0							
16W/34W								

Communications				ATC		AWOS/ASOS	
Unicom	CTAF	GCO	RCO	FREQ	FAA ID	FREQ	Phone

122.900

Storage	TIE	Repairs	Y
Landing Fee	N	Oxygen	N
Lighting Sched	SEE RMK	Fuel Type	100LL

<b>Att Schedule</b>	MON-SAT 0800-DUSK
<b>Remarks</b>	water lanes not marked- lengths change with water levels, contact manager. FOR LIRL RY 15/33 CALL 803-286-8800. Private Apt. - Public Use 100LL available 24/7



ATLANTA SECTIONAL  
12/30/2021

**Latitude:** 35° 09' 26.4000" N  
**Longitude:** 82° 07' 25.5000" W



Mag Var - 07° W

Runway					Edge	Approach	Traffic
ID	Length	Width	Surface	VGSI	REILS	Lights	Lights
14/32	2770'	30'	ASPH			LOW	14 - RH

Runway Pavement Strength					Navigation			
Runway	SW	DW	DTW	DDTW	IDENT	Type	FREQ	Direct/Dist
14/32	6.5				SPA	VORTAC	115.70	r310° 12.2 NM to fld

Communications				ATC		AWOS/ASOS	
Unicom	CTAF	GCO	RCO	FREQ	FAA ID	FREQ	Phone
122.900							

**Manager** Greg Hall  
**GPS** 80 Airport Rd  
**Address** Campobello, SC 29322  
**Phone** (864) 420-1400  
**Fax**  
**E-mail** geegofly1@aol.com  
**FBO Phone/Fax**

<b>Storage</b>	TIE	<b>Repairs</b>	N
<b>Landing Fee</b>	N	<b>Oxygen</b>	N
<b>Lighting Sched</b>	SEE RMK	<b>Fuel Type</b>	N

Att Schedule UNATNDD

Remarks	RWY 14/32 IN POOR CONDITION Private Apt. - Public Use
---------	--

SOUTH END OF RWY 14 HAS 800' OF UNFINISHED ASPHALT OVERRUN

CHARLOTTE SECTIONAL  
12/30/2021

**LAURENS - 40**

**Latitude:** 34° 30' 25.6000" N  
**Longitude:** 81° 56' 49.0000" W



**Elevation - 698' MSL**

Mag Var - 07° W

Runway					Edge	Approach	Traffic	
ID	Length	Width	Surface	VGSI	REILS	Lights	Lights	Pattern
08/26	4051'	75'	CONC	08/26	08/26	MED		Standard

Runway Pavement Strength					Navigation			
Runway	SW	DW	DTW	DDTW	IDENT	Type	FREQ	Direct/Dist
08/26	12.5				GRD	VORTAC	115.50	r35° 18.4 NM to fld

Communications				ATC		AWOS/ASOS	
Unicom	CTAF	GCO	RCO	FREQ	FAA ID	FREQ	Phone
122.800	122.800			120.6	GSP	123.975	(864) 682-3639

**Manager G. A. "Bud" Boyter**

**GPS** 3985 Torrington Rd

**Address** Laurens, SC 29360

**Phone** (864) 923-3507

**Fax**

**E-mail**    gabovt@prtcnet.com

FBO Phone/Fax

## Storage

**Landing Fee**

Lighting Sched SEE RMK

TIE

N

SEE RMK

Repairs Y

Oxygen      N

**Fuel Type** 100LL

Y

N

100LL

**Att Schedule** MON-SAT 0900-1700 SUN 1300-1700

Remarks	ACTVT MIRL - CTAF SELF SERVICE 100LL
---------	---



CHARLOTTE SECTIONAL  
12/30/2021

**Latitude:** 34° 05' 18.3000" N  
**Longitude:** 78° 51' 53.7000" W



Mag Var - 09° W

Runway					Edge	Approach	Traffic
ID	Length	Width	Surface	VGSI	REILS	Lights	Lights
08/26	3694'	60'	ASPH	26		LOW	Standard

Runway Pavement Strength					Navigation			
Runway	SW	DW	DTW	DDTW	IDENT	Type	FREQ	Direct/Dist
08/26	8.0				CRE	VORTAC	117.60	r340° 17.9 NM to fld

Communications				ATC		AWOS/ASOS	
Unicom	CTAF	GCO	RCO	FREQ	FAA ID	FREQ	Phone
	122.900			119.2	MYR		

<b>Manager</b>	Scott VanMoppes	<b>Storage</b>	TIE	<b>Repairs</b>	N
<b>GPS</b>	1326 Tory Hill Rd	<b>Landing Fee</b>	N	<b>Oxygen</b>	N
<b>Address</b>	Loris, SC 29569	<b>Lighting Sched</b>	DUSK-DAWN	<b>Fuel Type</b>	N
<b>Phone</b>	(843) 448-1580				
<b>Fax</b>	(843) 626-9096	<b>Att Schedule</b>	UNATTENDED		
<b>E-mail</b>	vanmoppes@horrycounty.org	<b>Remarks</b>	ACTVT LIRL - CTAF		
<b>FBO Phone/Fax</b>					



Elevation - 102' MSL

Mag Var - 08° W

Runway					Edge	Approach	Traffic
ID	Length	Width	Surface	VGSI	REILS	Lights	Pattern
02/20	3602'	75'	ASPH	02/20		MED	Standard

Runway Pavement Strength					Navigation			
Runway	SW	DW	DTW	DDTW	IDENT	Type	FREQ	Direct/Dist
02/20	30.0				MNI VAN	NDB VORTAC	381 110.40	at fld r67° 13.8 to fld

Communications				ATC		AWOS/ASOS	
Unicom	CTAF	GCO	RCO	FREQ	FAA ID	FREQ	Phone
122.800	122.800			125.4	SSC	120.175	(803) 478-6060

Manager Vickie Williams

GPS 8606 Highway 260

Address Manning, SC 29102

Phone (803) 433-3223

Fax

E-mail grants@clarendoncountygov.org

FBO Phone/Fax Precision Air Inc. (803) 478-4764

Storage TIE

Landing Fee N

Lighting Sched SEE RMK

Att ScheduleMON-FRI 0800-1700

Remarks MIRL PRESET LOW INTST DUSK-2300; TO INCR INTST - CTAF. SELF SERVICE 100LL AND JET A

Repairs Y

Oxygen N

Fuel Type 100LL, A



Elevation - 92' MSL

Mag Var - 09° W

Runway					Edge	Approach	Traffic
ID	Length	Width	Surface	VGSI	REILS	Lights	Pattern
04/22	4504'	100'	ASPH	04/22		MED	04,22 - RH

Runway Pavement Strength					Navigation			
Runway	SW	DW	DTW	DDTW	IDENT	Type	FREQ	Direct/Dist
04/22	30.5	46.5			FLO	VORTAC	115.20	r104° 16.3NM to fld

Communications				ATC	AWOS/ASOS		
Unicom	CTAF	GCO	RCO	FREQ	FAA ID	FREQ	Phone
122.800	122.800			135.25	FLO	119.875	(843) 423-4231

Manager Margaret Pittman  
GPS 225 Airport Ct  
Address Mullins, SC 29574  
Phone (843) 423-8265  
Fax (843) 423-8266  
E-mail mpittman@marionsc.org

Storage HGR,TIE  
Landing Fee N  
Lighting Sched SS-SR

Repairs N  
Oxygen N  
Fuel Type 100LL, JET A

Att Schedule Daily 0700-1700  
Remarks Self Service 100LL and JET A

FBO Phone/Fax  
Marion County  
(843) 423-8265



ATLANTA SECTIONAL  
12/30/2021

MC CORMICK - 44

**Latitude:** 33° 54' 29.1490" N  
**Longitude:** 82° 16' 00.9480" W



**Elevation - 459' MSL**

Mag Var - 07° W

Runway					Edge	Approach	Traffic
ID	Length	Width	Surface	VGSI	REILS	Lights	Lights
18/36	3598'	75'	ASPH				Standard

Runway Pavement Strength					Navigation			
Runway	SW	DW	DTW	DDTW	IDENT	Type	FREQ	Direct/Dist
18/36	12.5				GRD	VORTAC	115.50	r196° 21.3 NM to fld

Communications				ATC		AWOS/ASOS	
Unicom	CTAF	GCO	RCO	FREQ	FAA ID	FREQ	Phone
122.900							

**Manager** Columbus Stephens  
**GPS** 478 Airport Rd  
**Address** McCormick, SC 29835  
**Phone** (864) 852-2231  
**Fax** (864) 852-2783  
**E-mail** cstevens@mccormick  
**FBO Phone/Fax**

<b>Storage</b>	TIE	<b>Repairs</b>	N
<b>Landing Fee</b>	N	<b>Oxygen</b>	N
<b>Lighting Sched</b>	SEE RMK	<b>Fuel Type</b>	N

Att Schedule UNATTENDED

Remarks	BEACON AND MIRL OUT OF SERVICE INDEFINITELY NO NIGHT OPERATIONS
---------	---

MKS - BERKELEY COUNTY  
CHARLOTTE SECTIONAL  
12/30/2021

MONCKS CORNER - 45

Latitude: 33° 11' 05.4130" N  
Longitude: 80° 02' 13.1150" W



Elevation - 74' MSL

Mag Var - 08° W

Runway					Edge		Approach	Traffic
ID	Length	Width	Surface	VGSI	REILS	Lights	Lights	Pattern
05/23	5001'	75'	CONC	23		MED		Standard

Runway Pavement Strength					Navigation			
Runway	SW	DW	DTW	DDTW	IDENT	Type	FREQ	Direct/Dist
05/23	35.0	52.0			CHS	VORTAC	113.50	r05° 17.4 NM to fld

Communications				ATC	AWOS/ASOS		
Unicom	CTAF	GCO	RCO	FREQ	FAA ID	FREQ	Phone
123.050	123.050			119.3	CHS	119.175	(843) 761-1486

<b>Manager</b>	Stacy Thomas	<b>Storage</b>	HGR, TIE	<b>Repairs</b>	Y
<b>GPS</b>	616 Whitesville Rd	<b>Landing Fee</b>	N	<b>Oxygen</b>	N
<b>Address</b>	Moncks Corner, SC 29461	<b>Lighting Sched</b>	SEE RMK	<b>Fuel Type</b>	100LL, JET A
<b>Phone</b>	(843) 719-4751				
<b>Fax</b>	(843) 719-4752	<b>Att Schedule</b>	Daily 0800-1800		
<b>E-mail</b>	stacy.thomas@berkeleycountysc.g	<b>Remarks</b>	ACTVT MIRL - CTAF. AFTER HRS SERVICE CONTACT FBO SELF SERVICE 100LL and JET A RWY 5 DPLCD TH 650'		
<b>FBO Phone/Fax</b>					
Berkeley County Airport					
(843) 899-7711	(843) 719-4752				

LRO - MT PLEASANT RGNL-FAISON FIELD  
CHARLOTTE SECTIONAL  
12/30/2021

MOUNT PLEASANT - 46

Latitude: 32° 53' 52.2000" N  
Longitude: 79° 46' 58.3000" W



Elevation - 11' MSL

Mag Var - 08° W

Runway					Edge		Approach	Traffic
ID	Length	Width	Surface	VGSI	REILS	Lights	Lights	Pattern
17/35	3700'	75'	ASPH	17/35		MED		35 - RH

Runway Pavement Strength					Navigation			
Runway	SW	DW	DTW	DDTW	IDENT	Type	FREQ	Direct/Dist
17/35	12.5				CHS	VORTAC	113.50	r094° 12.9 NM to fld

Communications				ATC		AWOS/ASOS	
Unicom	CTAF	GCO	RCO	FREQ	FAA ID	FREQ	Phone
122.700	122.700			135.8	CHS	118.625	(843) 849-0438

Manager Elliott Summey	Storage	TIE	Repairs	Y
GPS 700 Faison Rd	Landing Fee	N	Oxygen	N
Address Mount Pleasant, SC 29466	Lighting Sched	SEE RMK	Fuel Type	100LL, JET A
Phone (843) 767-7000				
Fax	Att Schedule	Daily 0600-2000		
E-mail esummey@iflychs.com	Remarks	Ramp Fee		
FBO Phone/Fax		ACTVT MIRL RWY 17/35 - CTAF.		
Charleston County Aviation Authority				
(843) 884-8837				



CHARLOTTE SECTIONAL  
12/30/2021

**Latitude:** 33° 40' 47.0680" N  
**Longitude:** 78° 55' 41.9570" W



Mag Var - 09° W

Runway						Edge	Approach	Traffic
ID	Length	Width	Surface	VGSI	REILS	Lights	Lights	Pattern
18/36	9503'	150'	ASPH	18/36		HIGH	18/36	18 - RH

Runway Pavement Strength					Navigation				
Runway	SW	DW	DTW	DDTW	IDENT	Type	FREQ	Direct/Dist	
18/36	120.0	233.0	424.0	943.0	CRE	VORTAC	117.60	r235° 13.0 NM to fld	
Communications			ATIS	ATC		RCO	APP/DEP	AWOS/ASOS	
Tower	GRND	CL DEL	FREQ	FREQ	FAA ID	FREQ	BRNG/FREQ	FREQ	Phone
128.45	120.3	120.3	123.925	119.2	MYR		322-170/119.2	124.500 (843) 238-0335	
				127.4	MYR		171-321/127.4		

**Manager** Scott VanMoppes  
**GPS** 1100 Jetport Rd  
**Address** Myrtle Beach, SC 29577  
**Phone** (843) 448-1580  
**Fax** (843) 626-9096  
**E-mail** [vanmoppes@horrycounty.org](mailto:vanmoppes@horrycounty.org)

**FBO Phone/Fax**  
Beach Aviation Services  
(843) 839-6740      (843) 477-1769

Storage	TIE	Repairs	Y
Landing Fee		Oxygen	N
Lighting Sched	SEE RMK	Fuel Type	100LL, A

Att Schedule ALL/ALL/0600-2100

Remarks	Unicom 122.95; Ramp Fee Class C Airspace 0600-2300 other times Class G IF ATCT CLSD ACTVT HIRL CTAF 128.45 FBO OFFERS FS/SS 100LL, FS JET A
---------	---

CHARLOTTE SECTIONAL  
12/30/2021

NEWBERRY - 48

**Latitude:** 34° 18' 33.6000" N  
**Longitude:** 81° 38' 26.4000" W



**Elevation - 570' MSL**

Mag Var - 07° W

Runway					Edge	Approach	Traffic
ID	Length	Width	Surface	VGSI	REILS	Lights	Lights
04/22	4001'	75'	ASPH	04/22		MED	22 - RH

Runway Pavement Strength					Navigation			
Runway	SW	DW	DTW	DDTW	IDENT	Type	FREQ	Direct/Dist
04/22	23.0	30.0			GRD EOE	VORTAC NDB	115.50 278	r083° 25.8 NM to fld at fld

Communications				ATC		AWOS/ASOS	
Unicom	CTAF	GCO	RCO	FREQ	FAA ID	FREQ	Phone
122.800	122.800			133.4	CAE	124.275	(803) 276-2419

**Manager Mike Pisano**

**GPS** 1239 Airport Rd

**Address** Newberry, SC 29108

**Phone** (803) 944-4298

Fax

**E-mail** mpisano@newberrycounty.net

FBO Phone/Fax

## Storage

Landing Fee

**Lighting Sched** SEE RMK

Att Schedule

Remarks

TIE

N

SEE RMK

UNATTENDED

ACTVT PAPI, MIRL - CTAF.  
After hours access use Unicom  
SELF SERVICE 100LL

## Repairs

## Oxygen

Fuel Type 100LL

CRE - GRAND STRAND  
CHARLOTTE SECTIONAL  
12/30/2021

NORTH MYRTLE BEACH - 49  
Latitude: 33° 48' 42.3000" N  
Longitude: 78° 43' 26.2000" W



Elevation - 32' MSL

Mag Var - 09° W

Runway					Edge		Approach	Traffic
ID	Length	Width	Surface	VGSI	REILS	Lights	Lights	Pattern
05/23	5997'	100'	ASPH	05/23	05	HIGH	23	23 - RH

Runway Pavement Strength					Navigation			
Runway	SW	DW	DTW	DDTW	IDENT	Type	FREQ	Direct/Dist
05/23	76.0	112.0			CRE	VORTAC	114.40	at fld

Communications			ATIS		ATC		RCO	APP/DEP		AWOS/ASOS	
Tower	GRND	CL DEL	FREQ	FREQ	FAA ID	FREQ	FREQ	BRNG/FREQ	FREQ	Phone	
124.6	121.8		119.625	119.2	MYR	122.6			119.625	(843) 361-2802	
						114.4T					
						122.1R					

**Manager** Scott VanMoppes  
**GPS** 2800 Terminal St  
**Address** North Myrtle Beach, SC 29582  
**Phone** (843) 448-1580  
**Fax** (843) 626-9096  
**E-mail** vanmoppes@horrycounty.org

**FBO Phone/Fax**  
Beach Aviation Services  
(843) 848-7400 (843) 272-5822

**Storage** HGR,TIE  
**Landing Fee** N  
**Lighting Sched** SEE RMK  
**Repairs** N  
**Oxygen** N  
**Fuel Type** 100LL, JET A

**Att Schedule** Daily 0700-2100  
**Remarks** Extensive banner tow operations from arpt along coastline 10 NM NE to 20 NM SW.  
Class D airspace 0700-2100 CTAF 124.6  
Class G airspace when tower not operating.  
AFTER 0000 ACTVT HIRL; REIL RWY 05 AND MALSR RWY 23 - CTAF 124.6.  
For after hours access contact FBO. Unicom 122.95 Ramp Fee  
FBO offers FS/SS 100LL, FS JET A



CHARLOTTE SECTIONAL  
12/30/2021

**Latitude:** 33° 23' 03.3400" N  
**Longitude:** 80° 54' 25.2900" W



Mag Var - 07° W

Runway					Edge	Approach	Traffic
ID	Length	Width	Surface	VGSI	REILS	Lights	Lights
02/20	2900'	80'	TURF				Standard

Runway Pavement Strength					Navigation			
Runway	SW	DW	DTW	DDTW	IDENT	Type	FREQ	Direct/Dist
02/20					VAN	VORTAC	110.40	r263° 23.6 NM to fld

Communications				ATC		AWOS/ASOS	
Unicom	CTAF	GCO	RCO	FREQ	FAA ID	FREQ	Phone

122.900

**Manager** Kurt Von Graff  
**GPS** 126 Dry Swamp Rd  
**Address** Cordova, SC 29039  
**Phone** (803) 534-3157

**Fax**  
**E-mail** kurt@dryswampairport.com  
**FBO Phone/Fax**

Storage	HGR
Landing Fee	
Lighting Sched	

<b>Att Schedule</b>	Daily SR-SS
<b>Remarks</b>	Private Airport - Public Use

Repairs	Y
Oxygen	N
Fuel Type	100LL

## 12/30/2021

**Longitude:** 80° 51' 33.8640" W



Mag Var - 07° W

Runway						Edge	Approach	Traffic
ID	Length	Width	Surface	VGSI	REILS	Lights	Lights	Pattern
05/23	4508'	100'	ASPH	05	23	MED		05 - RH
17/35	5399'	100'	ASPH	17/35	17/35	MED	17/35	Standard

Runway Pavement Strength					Navigation			
Runway	SW	DW	DTW	DDTW	IDENT	Type	FREQ	Direct/Dist
05/23	30.0	50.0			VAN	VORTAC	110.40	r270° 20.6NM to fld
17/35	30.0	72.0						

Communications				ATC		AWOS/ASOS	
Unicom	CTAF	GCO	RCO	FREQ	FAA ID	FREQ	Phone
122.700	122.700		125.675	124.15	CAE	118.525	(803) 536-3901

**Manager** Betty Baker  
**GPS** 1811 Airport Rd  
**Address** Orangeburg, SC 29115  
**Phone** (803) 534-5545  
**Fax**  
**E-mail** [betty.baker@orangeburg.sc.us](mailto:betty.baker@orangeburg.sc.us)

**FBO Phone/Fax**  
Orangeburg Municipal Airport  
(803) 928-1545  
(803) 928-1545

<b>Storage</b>	TIE	<b>Repairs</b>	Y
<b>Landing Fee</b>	N	<b>Oxygen</b>	N
<b>Lighting Sched</b>	SEE RMK	<b>Fuel Type</b>	100LL, JET A

<b>Att Schedule</b>	MON-FRI 0700-1700 SAT 0800-1600
<b>Remarks</b>	<p>ACTVT MIRL, ODALS RWYS 17, 35 AND REIL - CTAF 122.7.</p> <p>VASI RWY 05 AND PAPI RWYS 17 &amp; 35 OPER CONT.</p> <p>After hrs access directions posted on door.</p> <p>SELF SERVICE 100LL and JET A</p>

CHARLOTTE SECTIONAL  
12/30/2021

**Latitude:** 34° 44' 31.7000" N  
**Longitude:** 80° 20' 42.7000" W



Mag Var - 08° W

Runway						Edge	Approach	Traffic
ID	Length	Width	Surface	VGSI	REILS	Lights	Lights	Pattern
06/24	3396'	60'	ASPH	06/24	06/24	MED		Standard

Runway Pavement Strength					Navigation			
Runway	SW	DW	DTW	DDTW	IDENT	Type	FREQ	Direct/Dist
06/24	12.5				CTF	VOR/DME	108.20	r331° 6.5 NM to fld

Communications				ATC		AWOS/ASOS	
Unicom	CTAF	GCO	RCO	FREQ	FAA ID	FREQ	Phone
	122.900			120.05	CLT		

**Manager** Cecil Kimrey  
**GPS** 99 State Road S-13-753  
**Address** Pageland, SC 29728  
**Phone** (843) 672-7292  
**Fax** (843) 672-5635  
**E-mail** ckimrey@shtc.net  
**FBO Phone/Fax**

<b>Storage</b>	TIE	<b>Repairs</b>	N
<b>Landing Fee</b>	N	<b>Oxygen</b>	N
<b>Lighting Sched</b>	SS-SR	<b>Fuel Type</b>	100LL
<b>Att Schedule</b>	UNATTENDED		
<b>Remarks</b>	ACTVT MIRL, REIL - CTAF Gate access use CTAF freq. SELF SERVICE 100LL		



**PELION - 53**

**Latitude:** 33° 47' 40.7000" N

**Longitude:** 81° 14' 45.1000" W



Mag Var - 07° W

Runway					Edge	Approach	Traffic
ID	Length	Width	Surface	VGSI	REILS	Lights	Lights
18/36	4335'	75'	CONC	36		MED	Standard

Runway Pavement Strength					Navigation			
Runway	SW	DW	DTW	DDTW	IDENT	Type	FREQ	Direct/Dist
18/36	12.5				CAE	VORTAC	114.70	r251° 10.3 NM to fld

Communications				ATC		AWOS/ASOS	
Unicom	CTAF	GCO	RCO	FREQ	FAA ID	FREQ	Phone
123.000	123.000			124.15	CAE		

---

N

N

**Fuel Type** 100LL

UNATTENDED

Remarks	After hours access use Unicom followed by #
---------	---

ACTVT MIRL - CTAF  
SELF SERVICE 100LL

LQK - PICKENS COUNTY

ATLANTA SECTIONAL  
12/30/2021

PICKENS - 54

Latitude: 34° 48' 35.9000" N  
Longitude: 82° 42' 10.4000" W



Elevation - 1013' MSL

Mag Var - 06° W

Runway					Edge	Approach	Traffic
ID	Length	Width	Surface	VGSI	REILS	Lights	Pattern
05/23	5002'	100'	ASPH	05/23		MED	Standard

Runway Pavement Strength					Navigation			
Runway	SW	DW	DTW	DDTW	IDENT	Type	FREQ	Direct/Dist
05/23	75.0	101.0			ELW	VORTAC	108.60	r10° 23.8 NM to fld

Communications				ATC		AWOS/ASOS	
Unicom	CTAF	GCO	RCO	FREQ	FAA ID	FREQ	Phone
122.800	122.800			118.8	GSP	120.000	(864) 843-5801

Manager	Carlos Salinas	Storage	HGR,TIE	Repairs	Y
GPS	240 Airport Rd	Landing Fee	N	Oxygen	N
Address	Liberty, SC 29657	Lighting Sched	SEE RMK	Fuel Type	100LL, JET A
Phone	(864) 843-5803				
Fax		Att Schedule	Daily 0800-1700		
E-mail	csalinas@co.pickens.sc.us	Remarks	Noise Abatement Procedures In Effect		
FBO Phone/Fax			ACTVT MIRL - CTAF.		
Pickens County Aviation			After hours access use Unicom freq		
(864) 843-5803			SELF SERVICE 100LL		

**RIDGELAND - 55**

**Latitude:** 32° 29' 48.6620" N

**Longitude:** 80° 59' 35.3360" W



Mag Var - 07° W

Runway					Edge	Approach	Traffic
ID	Length	Width	Surface	VGSI	REILS	Lights	Lights
18/36	4200'	75'	ASPH	18/36	18/36	MED	Standard

Runway Pavement Strength					Navigation			
Runway	SW	DW	DTW	DDTW	IDENT	Type	FREQ	Direct/Dist
18/36	30.0	45.0			SAV	VORTAC	115.95	r033° 23.3 NM to fld

Communications				ATC		AWOS/ASOS	
Unicom	CTAF	GCO	RCO	FREQ	FAA ID	FREQ	Phone

123.075 123.075

Storage	TIE	Repairs	Y
Landing Fee	N	Oxygen	N
Lighting Sched	SEE RMK	Fuel Type	100LL

<b>Att Schedule</b> UNATNDD OR IREG	
<b>Remarks</b>	ACTVT MIRL - CTA SELF SERVICE 100LL RWY 3/21 CONVERTED TO TAXIWAY LGTD WNDZONE, SGMNTD CIR MIDFLD REILS RWY 18/36; GLIDER OPS PAPI INOP PENDING FAA AUTH



**ROCK HILL - 56**

**Latitude:** 34° 59' 16.2000" N  
**Longitude:** 81° 03' 25.8000" W



Mag Var - 08° W

Runway						Edge	Approach	Traffic
ID	Length	Width	Surface	VGSI	REILS	Lights	Lights	Pattern
02/20	5500'	100'	ASPH	02/20		MED	02	Standard

Runway Pavement Strength					Navigation			
Runway	SW	DW	DTW	DDTW	IDENT	Type	FREQ	Direct/Dist
02/20	78.0	104.0			CLT	VORTAC	115.00	r208° 13.2 NM to fld

Communications				ATC		AWOS/ASOS	
Unicom	CTAF	GCO	RCO	FREQ	FAA ID	FREQ	Phone
123.050	123.050		126.850	120.05	CLT	120.775	(803) 981-9388

<b>Manager</b> Steven Gould	<b>Storage</b>	HGR,TIE	<b>Repairs</b> Y
<b>GPS</b> 550 Airport Rd	<b>Landing Fee</b>	N	<b>Oxygen</b> Y
<b>Address</b> Rock Hill, SC 29732	<b>Lighting Sched</b>	SEE RMK	<b>Fuel Type</b> 100LL, JET A
<b>Phone</b> (803) 329-5560			
<b>Fax</b>	<b>Att Schedule</b>	Daily 0800-2000	
<b>E-mail</b> steven.gould@cityofrockhill.com	<b>Remarks</b>	MIRL, MALSR RWY 02 PRESET MED INTST DUSK-2300; TO INCR INTST OR ACTVT AFTER 2300 - CTAF. For after hours access follow directions posted on signs at the airfield. SELF SERVICE 100LL	
<b>FBO Phone/Fax</b>			
Skytech, Inc.			
(803) 366-5108	(803) 980-7228		

6J4 - SALUDA COUNTY  
CHARLOTTE SECTIONAL  
12/30/2021

SALUDA - 57

Latitude: 33° 55' 36.4550" N  
Longitude: 81° 47' 40.6600" W



Elevation - 539' MSL

Mag Var - 07° W

Runway					Edge	Approach	Traffic
ID	Length	Width	Surface	VGSI	REILS	Lights	Pattern
01/19	3189'	60'	ASPH	01/19		MED	Standard

Runway Pavement Strength					Navigation			
Runway	SW	DW	DTW	DDTW	IDENT	Type	FREQ	Direct/Dist
01/19	11.3				GRD	VORTAC	115.50	r138° 26.5 NM to fld

Communications				ATC	AWOS/ASOS		
Unicom	CTAF	GCO	RCO	FREQ	FAA ID	FREQ	Phone

122.900

**Manager** Jill Warren  
**GPS** 180 Saluda Airport Rd  
**Address** Saluda, SC 29138  
**Phone** (864) 445-2529 Ext 3  
**Fax** (864) 445-3913  
**E-mail** j.warren@saludacounty.sc.gov  
**FBO Phone/Fax**  
Saluda Sky Aviation  
(803) 307-1452

**Storage** HGR,TIE  
**Landing Fee** N  
**Lighting Sched** SEE RMK  
**Repairs** Y  
**Oxygen** N  
**Fuel Type** 100LL

**Att Schedule** M-F 0800-1700 SAT 0800-1200  
**Remarks** ACTVT MIRL & PAPI RY 19 - CTAF.  
AIRFIELD ROAD ACCESS BY PRIOR  
ARRANGEMENT  
SELF SERVICE 100LL

**SPA - SPARTANBURG DOWNTOWN MEMORIAL/SIMPSON**  
CHARLOTTE SECTIONAL  
12/30/2021

**SPARTANBURG - 58**  
**Latitude:** 34° 54' 59.1000" N  
**Longitude:** 81° 57' 20.8000" W



Elevation - 802' MSL

Mag Var - 07° W

Runway					Edge		Approach	Traffic
ID	Length	Width	Surface	VGSI	REILS	Lights	Lights	Pattern
05/23	5852'	100'	ASPH	05/23	23	HIGH	05	Standard

Runway Pavement Strength					Navigation			
Runway	SW	DW	DTW	DDTW	IDENT	Type	FREQ	Direct/Dist
05/23	95.0	131.0			FRT SPA	NDB VORTAC	248 115.70	r64° 1.7 NM to fld r194° 7.2 NM to fld

Communications				ATC		AWOS/ASOS	
Unicom	CTAF	GCO	RCO	FREQ	FAA ID	FREQ	Phone
123.000	123.000			119.4	GSP	133.925	(864) 587-2529

<b>Manager</b> Terry Connorton	<b>Storage</b>	HGR,TIE	<b>Repairs</b> Y		
<b>GPS</b> 500 Ammons Rd	<b>Landing Fee</b>	N	<b>Oxygen</b> N		
<b>Address</b> Spartanburg, SC 29306	<b>Lighting Sched</b>	SEE RMK	<b>Fuel Type</b> 100LL, JET A		
<b>Phone</b> (864) 580-5004	<b>Att Schedule</b>	Daily 0700-1900			
<b>Fax</b> (864) 574-8558	<b>Remarks</b>	ACTVT HIRL, MALSR RWY 05 - CTAF. For fuel after hrs. 864-574-8552 SELF SERVICE 100LL			
<b>E-mail</b> tconnorton@cityofspartanburg.org					
<b>FBO Phone/Fax</b> City of Spartanburg (864) 574-8552					

Thanks to Richard Crouse & Associates for  
providing aerial photo taken 12-17-2018



**6J2 - ST GEORGE**  
 CHARLOTTE SECTIONAL  
 12/30/2021

**ST GEORGE - 59**  
 Latitude: 33° 11' 43.8000" N  
 Longitude: 80° 30' 30.5000" W



Elevation - 84' MSL
 Mag Var - 08° W

Runway					Edge		Approach	Traffic
ID	Length	Width	Surface	VGSI	REILS	Lights	Lights	Pattern
05/23	3201'	60'	ASPH			LOW		Standard

Runway Pavement Strength					Navigation			
Runway	SW	DW	DTW	DDTW	IDENT	Type	FREQ	Direct/Dist
05/23	21.0	30.0			VAN	VORTAC	110.40	r196° 17.0 NM to fld

Communications				ATC				AWOS/ASOS	
Unicom	CTAF	GCO	RCO	FREQ	FAA ID	FREQ	Phone		
122.800	122.800			120.7	CHS				

<b>Manager</b>	Don Hay	<b>Storage</b>	TIE	<b>Repairs</b>	N
<b>GPS</b>	152 Airport Rd	<b>Landing Fee</b>	N	<b>Oxygen</b>	N
<b>Address</b>	St. George, SC 29477	<b>Lighting Sched</b>	SS-SR	<b>Fuel Type</b>	N
<b>Phone</b>	(843) 412-1999	<b>Att Schedule</b>	UNATTENDED		
<b>Fax</b>	(843) 461-7500	<b>Remarks</b>	ACTVT LIRL - CTAF 122.8		
<b>E-mail</b>	Certified_flight@msn.com		GATE ACCESS *1941		
<b>FBO Phone/Fax</b>					

**DYB - SUMMERVILLE**  
CHARLOTTE SECTIONAL  
12/30/2021

**SUMMERVILLE - 60**

**Latitude:** 33° 03' 44.2000" N  
**Longitude:** 80° 16' 51.3000" W



**Elevation - 56' MSL**

Mag Var - 08° W

Runway					Edge	Approach	Traffic
ID	Length	Width	Surface	VGSI	REILS	Lights	Lights
06/24	5000'	75'	ASPH			MED	06 - RH

Runway Pavement Strength					Navigation			
Runway	SW	DW	DTW	DDTW	IDENT	Type	FREQ	Direct/Dist
06/24	19.5	31.0			CHS DYB	VORTAC NDB	113.50 365	r315° 15.8 NM to fld at fld

Communications				ATC		AWOS/ASOS	
Unicom	CTAF	GCO	RCO	FREQ	FAA ID	FREQ	Phone
123.000	123.000			120.7	CHS	119.575	(843) 821-8403

**Manager** Don Hay  
**GPS** 890 Greyback Rd  
**Address** Summerville, SC 29483  
**Phone** (843) 412-1999  
**Fax** (843) 462-7500  
**E-mail** don12hay@gmail.com  
**FBO Phone/Fax**  
 Pelican Aviation, Inc.  
 (843) 851-0970 (843) 851-0971

<b>Storage</b>	TIE	<b>Repairs</b>	Y
<b>Landing Fee</b>		<b>Oxygen</b>	N
<b>Lighting Sched</b>	SEE RMK	<b>Fuel Type</b>	100LL, JET A
<b>Att Schedule</b>	Daily 0800-1900		
<b>Remarks</b>	MIRL OPER DUSK-2200; AFTER 2200 ACTVT - CTAFF.		

## SUMTER - 61

**Latitude:** 33° 59' 42.0920" N

**Longitude:** 80° 21' 40.7840" W



Mag Var - 08° W

Runway						Edge	Approach	Traffic
ID	Length	Width	Surface	VGSI	REILS	Lights	Lights	Pattern
05/23	5501'	100'	ASPH	05/23	05/23	MED	23	05 - RH
14/32	3081'	120'	TURF					32 - RH

Runway Pavement Strength					Navigation			
Runway	SW	DW	DTW	DDTW	IDENT	Type	FREQ	Direct/Dist
05/23	31.5	42.5			SMS	NDB	252	at fld
14/32					VAN	VORTAC	110.40	r014° 31.5 NM to fld

Communications				ATC		AWOS/ASOS	
Unicom	CTAF	GCO	RCO	FREQ	FAA ID	FREQ	Phone
122.700	122.700			125.4	SSC	118.075	(803) 469-6750

**Manager** Jeff Knauer  
**GPS** 2945 Airport Rd  
**Address** Sumter, SC 29153  
**Phone** (803) 469-4639  
**Fax** (803) 469-6276  
**E-mail** oewings@ffc-i.net

<b>Storage</b>	HGR,TIE	<b>Repairs</b>	Y
<b>Landing Fee</b>	N	<b>Oxygen</b>	N
<b>Lighting Sched</b>	SEE RMK	<b>Fuel Type</b>	100LL, JET A

<b>Att Schedule</b>	Daily 0800-1700
<b>Remarks</b>	ACTVT MIRL, REILS RWY 5/23 - CTAF. PAPIS CONTINUOUS OPS Ramp Access use Unicorn freq. For fuel after hrs. 803/565-9978 SELF SERVICE 100LL

**FBO Phone/Fax**  
**OEW Aviation, LLC**  
**(803) 469-4639**



58J - HUGGINS MEMORIAL  
CHARLOTTE SECTIONAL  
12/30/2021

TIMMONSVILLE - 62  
Latitude: 34° 08' 08.0700" N  
Longitude: 79° 55' 17.0800" W



Elevation - 143' MSL

Mag Var - 08° W

Runway					Edge	Approach	Traffic
ID	Length	Width	Surface	VGSI	REILS	Lights	Pattern
14/32	3090'	150'	TURF			LOW	Standard

Runway Pavement Strength					Navigation			
Runway	SW	DW	DTW	DDTW	IDENT	Type	FREQ	Direct/Dist
14/32					FLO	VORTAC	115.20	r249° 14.4 NM to fld

Communications				ATC		AWOS/ASOS	
Unicom	CTAF	GCO	RCO	FREQ	FAA ID	FREQ	Phone

122.900

Manager Bettie Huggins  
GPS 550 Runway Dr  
Address Timmonsville, SC 29161  
Phone (843) 346-3734  
Fax  
E-mail [bettiehuggins@aol.com](mailto:bettiehuggins@aol.com)  
FBO Phone/Fax

Storage HGR,TIE  
Landing Fee N  
Lighting Sched SEE RMK  
Repairs N  
Oxygen N  
Fuel Type N  
Att Schedule UNATTENDED  
Remarks ACTVT LIRL - CTAF.  
Private Apt. - Public Use

CHARLOTTE SECTIONAL  
12/30/2021

TRENTON - 63

**Latitude:** 33° 44' 12.7000" N  
**Longitude:** 81° 49' 07.5000" W



**Elevation - 611' MSL**

Mag Var - 07° W

Runway					Edge	Approach	Traffic
ID	Length	Width	Surface	VGSI	REILS	Lights	Lights
11/29	2640'	85'	TURF				
15/33	1584'	56'	TURF				

Runway Pavement Strength					Navigation			
Runway	SW	DW	DTW	DDTW	IDENT	Type	FREQ	Direct/Dist
11/29					IRQ	VORTAC	113.90	r088° 17.2 NM to fld
15/33								

Communications				ATC		AWOS/ASOS	
Unicom	CTAF	GCO	RCO	FREQ	FAA ID	FREQ	Phone
122.900							

**Manager** Johnny Anderson  
**GPS** 18 Girl Scout Camp Rd  
**Address** Trenton, SC 29847  
**Phone** (803) 279-4138  
**Fax**  
**E-mail** johnnyfanderson@bellsouth.net  
**FBO Phone/Fax**

Storage	TIE	Repairs	N
Landing Fee	N	Oxygen	N
Lighting Sched		Fuel Type	N
Att Schedule	UNATTENDED		
Remarks	Caution - radio control aircraft activity		

## UNION - 64

**Latitude:** 34° 41' 13.0300" N  
**Longitude:** 81° 38' 28.2000" W



Mag Var - 06° W

Runway					Edge	Approach	Traffic
ID	Length	Width	Surface	VGSI	REILS	Lights	Lights
05/23	3508'	60'	ASPH	05/23		MED	Standard

Runway Pavement Strength					Navigation			
Runway	SW	DW	DTW	DDTW	IDENT	Type	FREQ	Direct/Dist
05/23	12.5				GRD UOT	VORTAC NDB	115.50 326	r45°36.4 NM to fld at fld

Communications				ATC		AWOS/ASOS	
Unicom	CTAF	GCO	RCO	FREQ	FAA ID	FREQ	Phone
122.700	122.700			119.4	GSP	119.450 (864)	427-1514

**Manager** Ronnie Wade  
**GPS** 198 Airport rd  
**Address** Union, SC 29379  
**Phone** (864) 429-1680  
**Fax** (864) 429-1681  
**E-mail** [rwade@countyofunion.com](mailto:rwade@countyofunion.com)  
**FBO Phone/Fax**

<b>Storage</b>	HGR,TIE	<b>Repairs</b>	Y
<b>Landing Fee</b>	N	<b>Oxygen</b>	N
<b>Lighting Sched</b>	SEE RMK	<b>Fuel Type</b>	100LL
<b>Att Schedule</b>	MON-FRI 0800-1700		
<b>Remarks</b>	MIRL AFTER 0000 - CTAF SELF SERVICE 100LL		



**RBW - LOWCOUNTRY RGNL**  
 CHARLOTTE SECTIONAL  
 12/30/2021

**WALTERBORO - 65**  
 Latitude: 32° 55' 15.6000" N  
 Longitude: 80° 38' 26.2000" W



Elevation - 101' MSL
 Mag Var - 07° W

Runway					Edge		Approach	Traffic
ID	Length	Width	Surface	VGSI	REILS	Lights	Lights	Pattern
05/23	6002'	100'	ASPH-CONC	05/23	23	MED	23	Standard
17/35	5705'	100'	ASPH-CONC					Standard

Runway Pavement Strength					Navigation			
Runway	SW	DW	DTW	DDTW	IDENT	Type	FREQ	Direct/Dist
05/23	70.0	101.0			CHS	VORTAC	113.50	r278° 30.5 NM to fld
17/35	33.5	50.5						

Communications				ATC		AWOS/ASOS	
Unicom	CTAF	GCO	RCO	FREQ	FAA ID	FREQ	Phone
122.800	122.800			120.7	CHS	118.725	(843) 538-3575

<b>Manager</b> Thomas M. Rowe	<b>Storage</b> HGR,TIE	<b>Repairs</b> Y
<b>GPS</b> 537 Aviation Way	<b>Landing Fee</b> N	<b>Oxygen</b> N
<b>Address</b> Walterboro, SC 29488	<b>Lighting Sched</b> SEE RMK	<b>Fuel Type</b> 100LL, JET A
<b>Phone</b> (843) 549-2549	<b>Att Schedule</b> Mon-Sat 0800-1800 / Sun 0800-1700	
<b>Fax</b> (843) 549-1444	<b>Remarks</b> MIRL DUSK UNTIL 2200	
<b>E-mail</b> trowe@lowcountry.com	AFTER 2200 PCL CTAF	
<b>FBO Phone/Fax</b>	PAPI RWY 5&23. ODALS RWY 23.	
Lowcountry Regional Airport	SELF SERVICE 100LL	
(843) 549-2549 (843) 549-1444		
Lowcountry Aviation		
(855) 435-9522		

CHARLOTTE SECTIONAL  
12/30/2021

**WINNSBORO - 66**

**Latitude:** 34° 18' 56.6000" N  
**Longitude:** 81° 06' 30.8000" W



**Elevation - 578' MSL**

Mag Var - 07° W

Runway					Edge	Approach	Traffic	
ID	Length	Width	Surface	VGSI	REILS	Lights	Lights	Pattern
04/22	5243'	100'	ASPH	04/22		MED		Standard

Runway Pavement Strength					Navigation			
Runway	SW	DW	DTW	DDTW	IDENT	Type	FREQ	Direct/Dist
04/22	42.0	60.0			CAE	VORTAC	114.70	r356° 27.6 NM to fld

Communications				ATC		AWOS/ASOS	
Unicom	CTAF	GCO	RCO	FREQ	FAA ID	FREQ	Phone
123.050	123.050			133.4	CAE	119.075	(803) 712-2577

**Manager** Denise Bryan  
**GPS** 1291 Runway Rd  
**Address** Winnsboro, SC 29180  
**Phone** (803) 635-1058  
**Fax** (803) 815-1495  
**E-mail** [denise.bryan@fairfield.sc.gov](mailto:denise.bryan@fairfield.sc.gov)

Storage	TIE	Repairs	Y
Landing Fee	N	Oxygen	N
Lighting Sched	SEE RMK	Fuel Type	100LL, JET A

<b>Att Schedule</b>	Daily 0800-1700 EST / 0800-1800 DST
<b>Remarks</b>	MIRL PRESET LOW INTST, ACTVT MIRL & VGS - CTA RAMP ACCESS OR FUEL AFTR HRS 803-315-3048 RWY 4 DSPLCD TH 239' SELF SERVICE 100LL

[illegible]





**Online Flight Planning**  
[WWW.1800WXBRIEF.COM](http://WWW.1800WXBRIEF.COM)

**Specialist Services**  
1-800-WX-BRIEF

When requesting a briefing from a Flight Service Specialist, please provide the following required background information:

- ACID or Pilot Last Name
- Aircraft Type
- Departure Airport
- Proposed Departure Time
- Altitude
- Destination Airport
- Estimated Time Enroute

**Radio Services**  
Inflight: 24/7

- VFR Flight Plan activations, closures, and updates
- PIREPs, clearances, and position reports
- Weather and NOTAM updates
- Lost Aircraft assistance and emergency services

**Access Online Flight Planning  
and More**

[WWW.1800WXBRIEF.COM](http://WWW.1800WXBRIEF.COM)  
or scan this QR code:



### ICAO Flight Plan Form

- Aircraft Identification
- Flight Rule
- Flight Type
- Aircraft Type
- Wake Turbulence
- Aircraft Equipment
- Surveillance Equipment
- Departure
- Departure Date & Time
- Cruising Speed
- Level
- Route of Flight
- Destination
- Estimated Elapsed Time
- Alternate(s)
- Other Information
- Supplemental Information

### Better Briefings, Safer Flights

The FAA's only authorized full-service Flight Service provider with online, phone, and radio services



**SOUTH CAROLINA  
AERONAUTICS**

2553 Airport Boulevard  
West Columbia, South Carolina 29170  
(803) 896-6262

<https://scaeronautics.sc.gov/>