
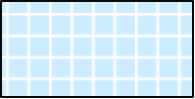
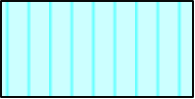






SOUTH CAROLINA
DEPARTMENT OF LABOR, LICENSING AND REGULATION
ORGANIZATIONAL CHART

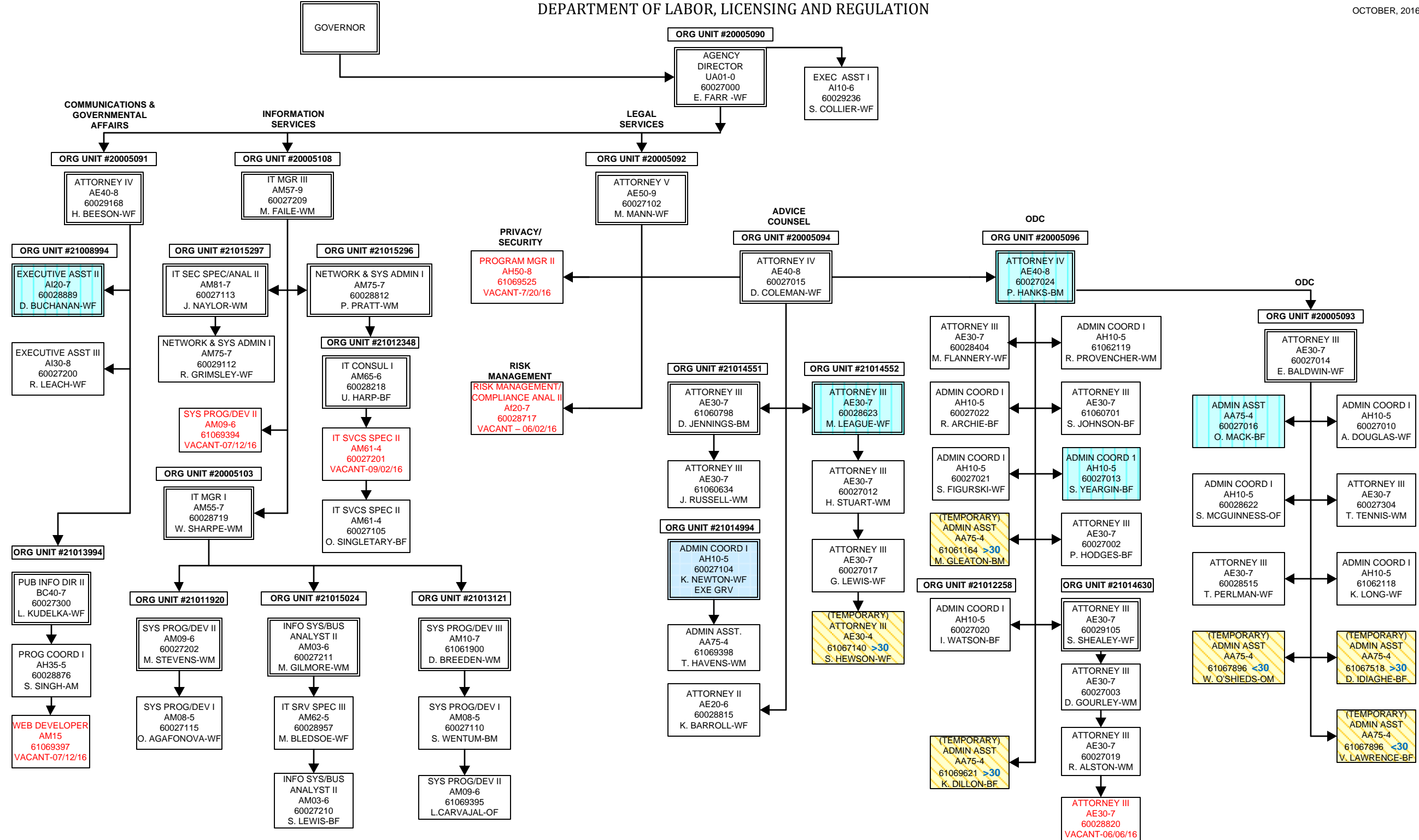
OCTOBER, 2016

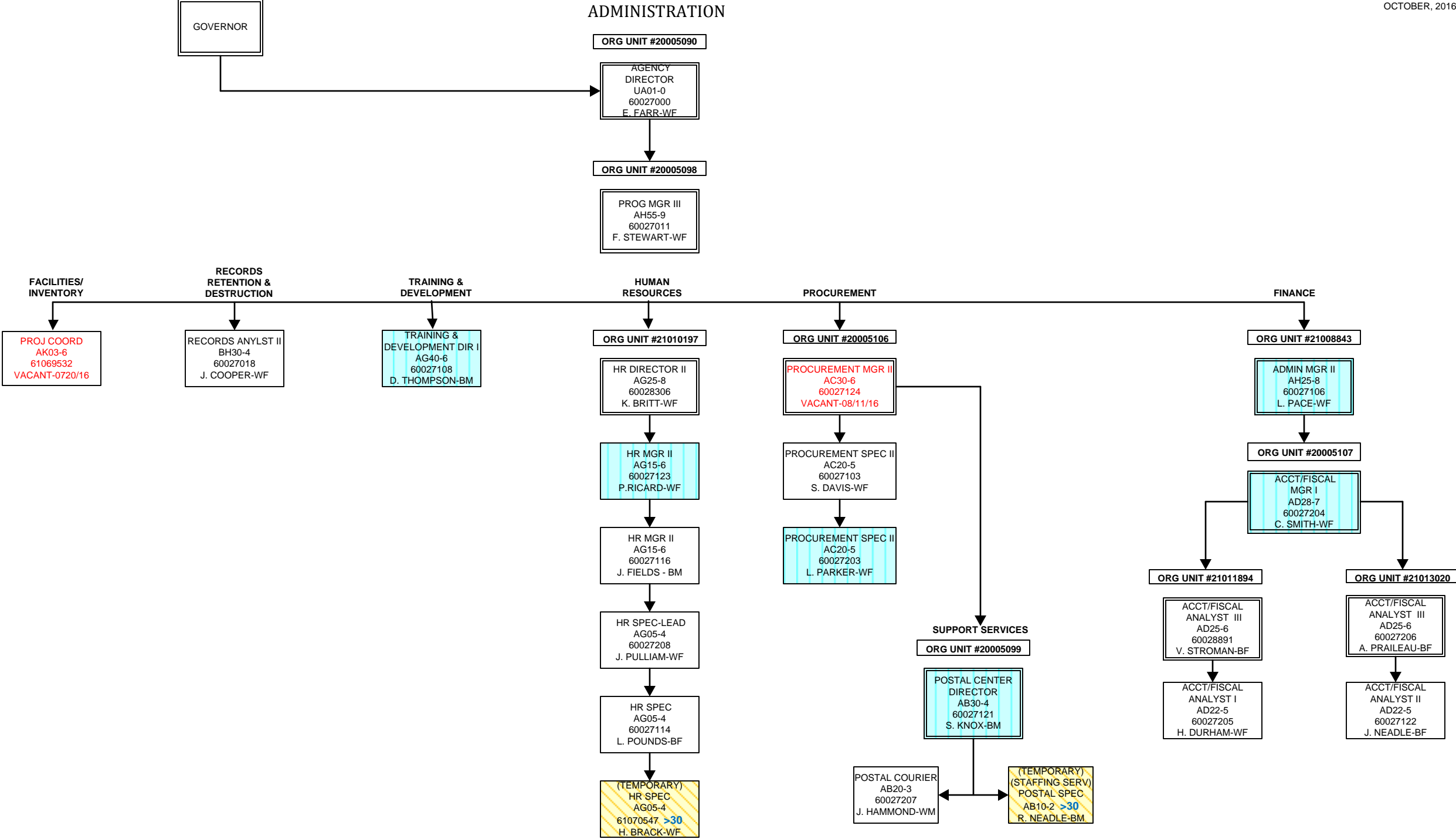
SOUTH CAROLINA
DEPARTMENT OF LABOR, LICENSING AND REGULATION
ORGANIZATIONAL CHARTS

Pink Diamond		TERI Employee
Light Blue Square		Employee returned after TERI or Retirement
Turquoise Vertical Stripe		Employee eligible to retire within 5 years by service or age
White Solid Red Letters		Vacant Position-Vacancy Date
Yellow Diagonal Stripe		Temporary Employee
Grayed out		Previously counted position
Dark Pink Outline		Borrowed position

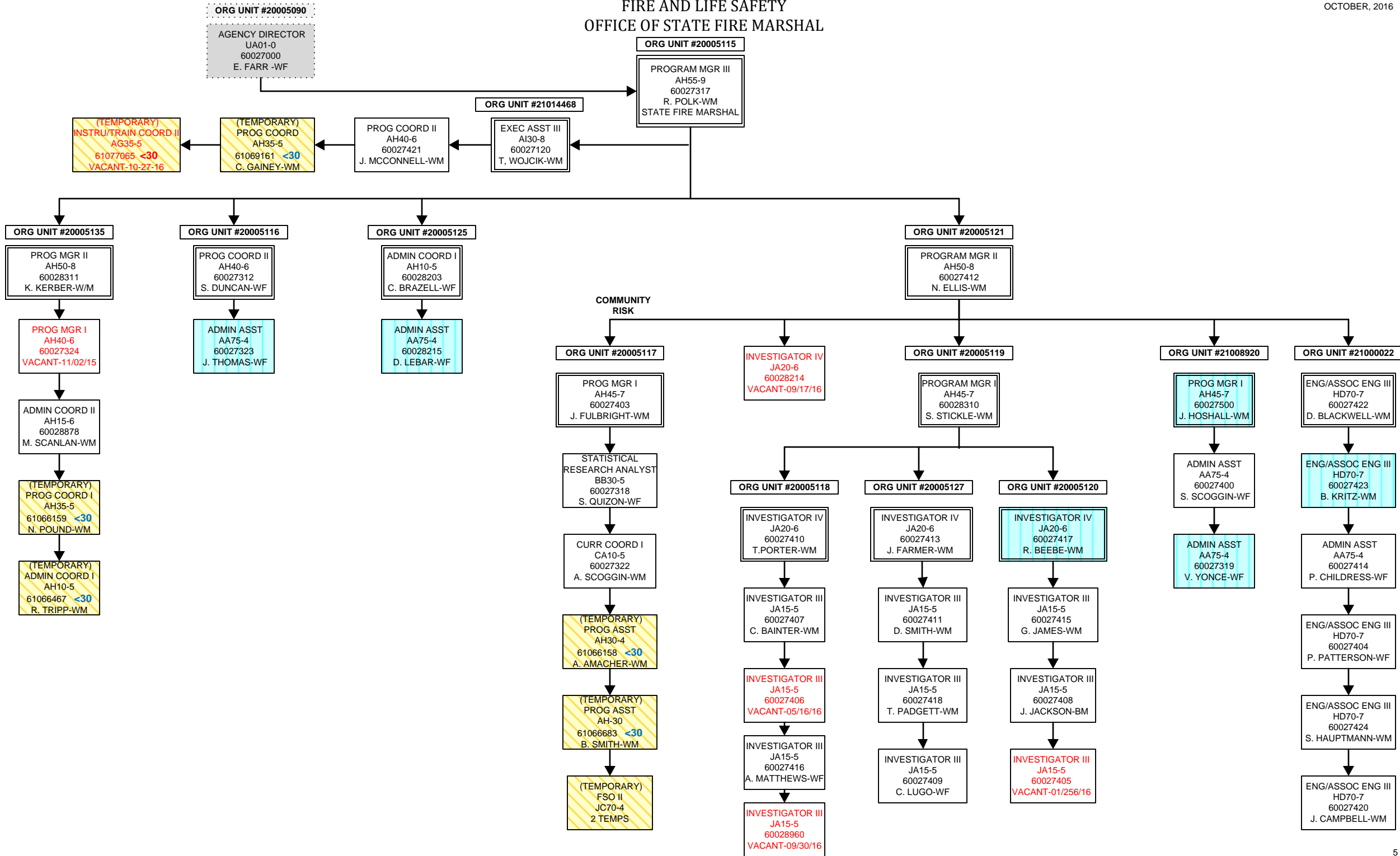
DEPARTMENT OF LABOR, LICENSING AND REGULATION

OCTOBER, 2016





FIRE AND LIFE SAFETY
OFFICE OF STATE FIRE MARSHAL



FIRE AND LIFE SAFETY
FIRE ACADEMY

OCTOBER, 2016

ORG UNIT #20005115
PROGRAM MGR III
AH55-9
60027317
R. POLK-WM
STATE FIRE MARSHAL

ORG UNIT #20005128
PROG MGR II
AH50-8
60028805
VACANT-7/2/16

ORG UNIT #20005134

ORG UNIT #20005124
ENG/ASSOC ENG II
HD65-6
60028202
D. RECKELHOFF-WM

ORG UNIT #21009882
TRAIN & DEV DIR I
AG40-6
60028207
VACANT-03/25/16

ORG UNIT #20005133
PROG MGR I
AH45-7
60028305
P. RUSSELL-WM

ORG UNIT #20005126
PROG COORD II
AH40-6
60028204
R. BUSBY-WM

TRADES SPEC IV
KC40-4
60028123
J. KESTER-WM

TRADES SPEC IV
KC40-4
60028219
M. MONROE-WM

TRADES SPEC V
KC50-5
60028216
J. GRIGGS-WM

TRADES SPEC IV
KC40-4
60028201
R. MOORE-WM

(TEMPORARY)
TRADES SPEC IV
KC40-4
61066615 <30
C. OWEN-WM

(TEMPORARY)
TRADES SPEC IV
KC40-4
61066684 <30
D. RAWLS-WM

ORG UNIT #20005123
CURR COORD II
CA20-6
60028302
B. WATTERS-WF

ADMIN COORD I
AH10-5
60028222
K. WHITE-BF

(TEMPORARY)
FSO II
JC70-4
4 TEMPS

ORG UNIT #21000446
PROG COORD II
AH40-6
60028212
C. BENNETT-WM

(TEMPORARY)
EDU SPEC
CA30-4
61066093 <30
D. HANSON-WM

(TEMPORARY)
EDU SPEC
CA30-4
61069607 <30
Y. MUHAMMAD-B/M

(TEMPORARY)
FSO II
JC70-4
1 TEMP

(TEMPORARY)
EDU SPEC
CA30-4
61049997 <30
N. MANSFIELD-WM

ORG UNIT #21012579
PROG COORD I
AH35-5
60028209
R. SIMPSON-WM

MEDIA RESRC
SPEC II
BG60-4
60028304
J. BLACK-WM

(TEMPORARY)
MEDIA SPEC II
BG60-4
61061899 >30
W. RENKIN-WM

(TEMPORARY)
MEDIA SPEC II
BG60-4
61066275 >30
A. HIGHLAND-BF

(TEMPORARY)
PRINTING MGR I
BD30-4
61065900 >30
F. BRANDT-WM

REGION 0
ORG UNIT #20005122
ADMIN COORD I
AH10-5
60028217
S. BUSH-BF

ADMIN ASST
AA75-4
60028303
K. RIVERA-WF

ADMIN ASST
AA75-4
60028213
G. EVANS-BF

ADMIN ASST
AA75-4
60028211
VACANT-03/24/16

REGION)
ORG UNIT #20005131
FOOD SERV SPEC V
KB25-5
60028224
C. JERMSTAD-WM

BLDG/GRDS SPEC III
KA15-3
60028210
S. WILLIAMS-BM

(TEMPORARY)
FOOD SVC SPEC III
KB15-3
VACANT-10/24/16

REGION 1
ORG UNIT #20005129
PROG COORD I
AH35-5
60028221
D. DUNCAN-WM

ADMIN ASST
AA75-4
60028220
C. BAKER-WF

(TEMPORARY)
FSO II
JC70-4
32 TEMPS

REGION 5
ORG UNIT #21001228
PROG COORD II
AH40-6
60028206
B. TURNER-WM

ADMIN ASST
AA75-4
60028301
A. WILLIAMSON-WF

(TEMPORARY)
FSO II
JC70-4
20 TEMPS

REGION 2
ORG UNIT #21011927
PROG COORD I
AH35-5
60028122
J. MCCARLEY-WM
EXEM GRV

(TEMPORARY)
FSO II
JC70-4
1 TEMP

REGION 4
ORG UNIT #20005132
PROG COORD I
AH35-5
60028300
B. CASSIDY-WM
EXEM GRV

ADMIN ASST
AA75-4
60028205
C. CANUP-WF

(TEMPORARY)
FSO II
JC70-4
27 TEMPS

REGION 6
ORG UNIT #21011926
PROG COORD I
AH35-5
60028307
M. TURNER-WF

(TEMPORARY)
FSO II
JC70-4
43 TEMPS

ORG UNIT #20005130
PROG COORD II
AH40-6
60028223
T. BROWN-BM

PROG COORD I
AH35-5
60028200
D. CROSSLAND-WM
EXEM GRV

PROG COORD I
AH35-5
60028121
VACANT-09/17/16

(TEMPORARY)
FSO II
JC70-4
18 TEMPS

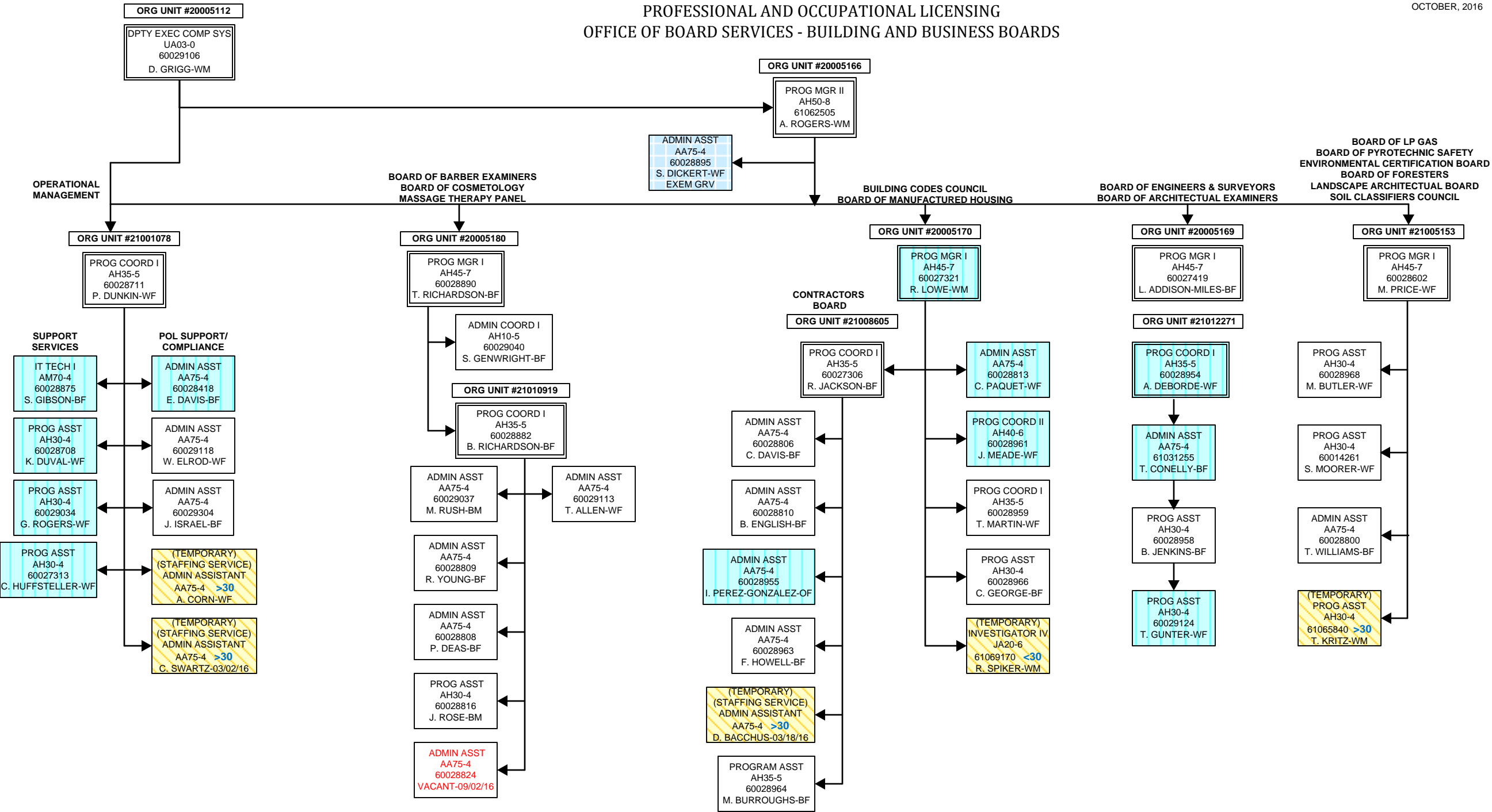
PROG COORD I
AH35-5
60028208
S. DAVIS-WM

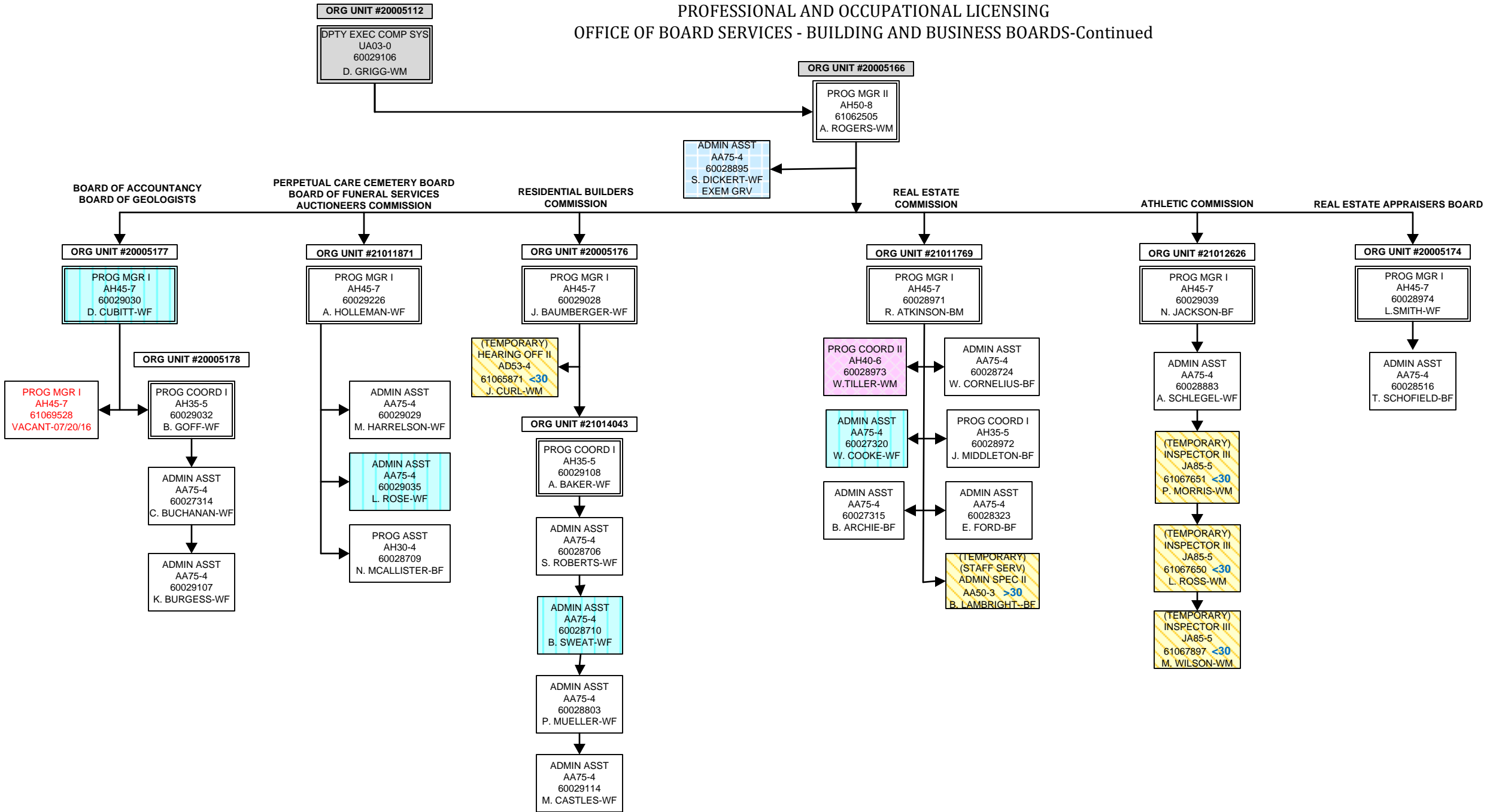
PROG COORD I
AH35-5
60028952
K. WATSON-UN

(TEMPORARY)
FSO II
JC70-4
42 TEMPS

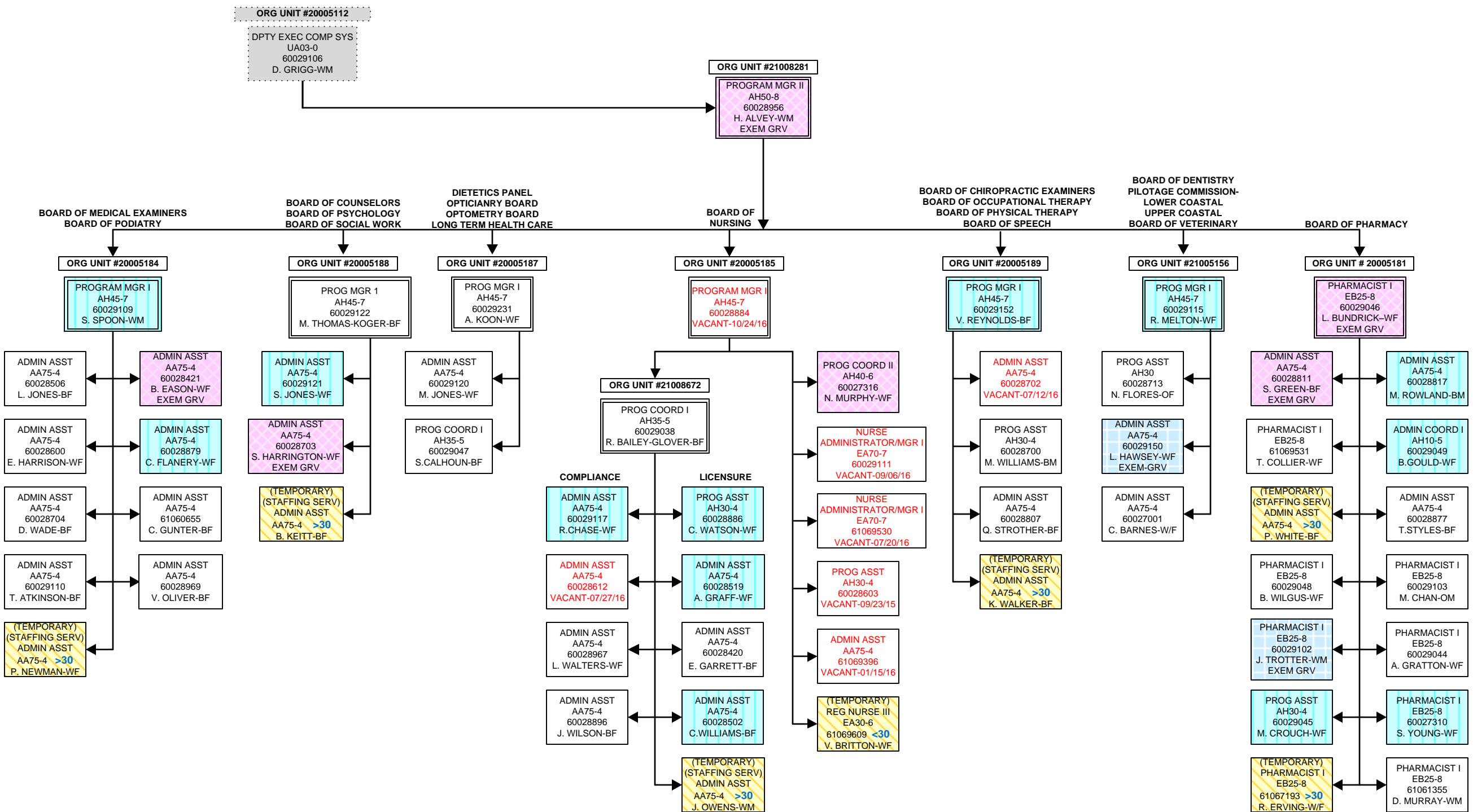
ORG UNIT #21009052
PROG COORD I
AH35-5
60028124
M. GEORGE-WM
EXEM GRV

PROFESSIONAL AND OCCUPATIONAL LICENSING
OFFICE OF BOARD SERVICES - BUILDING AND BUSINESS BOARDS





OFFICE OF BOARD SERVICES
HEALTH AND MEDICALLY RELATED BOARDS





DIVISION OF LABOR

