



2015 Product Catalog

English Version



SONCELL NORTH AMERICA
A PUBLIC SAFETY COMPANY

How to Order

Find the Product

Find the product you want in the catalog.

Each product is shown with all major accessories included with any order.

Determine Pricing

Find the same product on the pricing list.

The first two pages of the pricing list includes a summary of all products for quick reference including:

1. Product part number and name
2. MSRP pricing*

*Distributor pricing separate

Further Information

A detailed and comprehensive list of all parts included with the unit is available for each product in the back of the product catalog.

Note that some accessories listed in the catalog are kits composed of many smaller parts, all of which are listed on the pricing list details page.

Call to Order

Call Decatur Electronics 1.888.428.4315 to find the sales representative in your area. Or visit: www.decaturelectronics.com.

Shipping and handling will be quoted at that time.

Product Catalog



Top-line part number

Included accessories and parts

Photos of parts and accessories

Product Summary

Top-line part number

Pricing

Pricing Details

Top-line part number

Pricing

Accessory kits

Other included parts and accessories



Genesis Handheld Directional

GHD RADAR

MSRP - \$699.00



The GHD™ offers an easy-to-use, affordable corded radar gun for any department. Available in MPH (Kit# MPH) or KPH (Kit# KPH) or with special features for Florida (Kit# FLORID) or North Carolina (Kit# NCAROL)

INCLUDED:

U.S. Manual	User Manual
Warr 2	2 Year Warranty
S900-11	Tuning Forks 33.2 / 77.6 (When Ordered in MPH)
S900-12	Tuning Forks 45.3 / 110.6 (When Ordered in KPH)

OPTIONS:

S769-78110-0	EZ Stat Cable	\$75.00
S769-625-0	EZ Stat Data Logger	\$995.00



User Manual



S900-11 or S900-12



optional

S792-625-0



optional

S769-78110-0

Features:

- Directional Operation
- Track-Through-Lock for Proper Tracking History
- Doppler Audio
- Serial Port Available for EZ Stat™ Data Logger
- Large 32 Bit Processor



Scout

SCOUT RADAR

MSRP - \$999.00



Powered by rechargeable AA batteries, the Scout™ offers a proven Directional radar no matter where you are. Charge the Scout in the car or use it on motorcycles, roadsides or wherever you need traffic enforcement. Available in MPH (Kit# MPH) or KPH (Kit# KPH) or with special features for Florida (Kit# FLORID) or North Carolina (Kit# NCAROL)

INCLUDED:

P702-49 (times 6)	Rechargeable NiMH Batteries
S769-78124-0	Power Cord
U.S. Manual	User Manual
Warr 2	2 Year Warranty
S900-11	Tuning Forks 33.2 / 77.6 (When Ordered in MPH)
S900-12	Tuning Forks 45.3 / 110.6 (When Ordered in KPH)

OPTIONS:

S702-59-0	Wall Charger	\$85.00
------------------	--------------	---------



S769-78124-0



P702-49 (times 6)



S900-11 or S900-12



User Manual

Features:

- Directional Operation
- Track-Through-Lock for Proper Tracking History
- Doppler Audio
- Serial Port Available for EZ Stat™ Data Logger
- Large 32 Bit Processor



optional

S769-59-0



Decatur Speed LIDAR

DE Speed Lidar

MSRP - 2,995.00



The Decatur Speed Lidar is a designed to be rugged yet light weight and easy to use. Incorporating superior vehicle acquisition and tracking algorithms and internal accuracy checking the Decatur Speed Lidar is the perfect fit for your traffic monitoring and enforcement needs (Kit# US).

INCLUDED:

	Two C-Cell Batteries
	Carry Case
Warr 1	1 Year Warranty
U.S. Manual	User Manual

Features:

- True Color Heads-Up-Display (HUD)
- Select Distance or Speed Measurement
- High Resolution Rear Matrix with Auto-On Backlight
- Choose Between Speed, Range or Weather Modes of Operation
- True, Full Time, Continuous Tracking History in Speed Mode
- Advanced Anti-Jamming ECCM Technology

Specifications:

- Operates Off of Two C-Cell Alkaline or NiMH Rechargeable Batteries.
- Weight - 2.5 lbs (1.13 kg) with Batteries
- Controls: Mode Control, Menu, HUD Brightness, Volume, Weather and Self-Test Button
- Up to 24 Hours Operation Time (Using High Quality Alkaline or NiMH Batteries)
- Speed Range: 5 to 200 MPH (8-320 KPH)
- Distance Resolution: +/- 0.1 ft (3.0 cm)
- Eye Safety: FDA CDRH Class 1
- Waterproof to IP67
- 1/3 Second Acquisition Time
- IACP, CE Certified



Carry Case



Decatur Compact Speed LIDAR

DE Compact Lidar

MSRP - 1,895.00

The Decatur Compact Lidar is an extremely small, light weight law enforcement LIDAR. Easy to use, it is the perfect balance of features, package size and performance. Using advanced anti-jamming ECCM technology, superior vehicle acquisition and tracking algorithms along with internal accuracy checking the COMPACT is the perfect fit for your traffic monitoring (Kit# COMP)

INCLUDED:

	Two AA (Double A) Batteries
	Soft Carry Case
Warr 1	1 Year Warranty
U.S. Manual	User Manual

Features:

- Unity Magnification Heads-Up-Display (HUD)
- Select Distance or Speed Measurement
- Choose Between Speed, Range or Weather Modes of Operation
- High Resolution Side Matrix with Auto-On Backlight
- Easy to Use Controls with Dedicated Brightness, Volume and Weather Buttons.
- True, Full Time, Continuous Tracking History in Speed Mode
- Advanced Anti-Jamming ECCM Technology



Soft Carry Case



Specifications:

- Operates Off of Two AA (Double A) Alkaline or NiMH Rechargeable Batteries.
- Weight - 1 lbs (455 grams) with Batteries
- Compact, Lightweight and Easy to Stow
- Up to 24 Hours Operation Time (Using High Quality Alkaline or NiMH Batteries)
- Speed Range: 5 to 200 MPH (8-320 KPH)
- Distance Resolution: +/- 0.1 ft (3.0 cm)
- Eye Safety: FDA CDRH Class 1
- Water Resistant
- 1/3 Second Acquisition Time
- IACP Certified



Genesis II Select/Directional

(K-Band Directional Single Antenna) G2S RADAR

MSRP - \$1,595.00



The Directional antenna allows the operator to target vehicles either coming towards, going away or in both directions while in stationary mode. Available in MPH (Kit# KDMPH) or in KPH (Kit# KDKPH).

INCLUDED:

S773-235A-0	Windshield Mounting Bracket
S769-105-0	8 Foot Antenna Cable
Warr 5	5 Year Warranty
U.S. Manual	User Manual
S900-25	Tuning Forks: 35.2 / 65.6 (When Ordered in MPH)
S900-26	Tuning Forks: 55.2 / 105.6 (When Ordered in KPH)
S778-41-0	Hand Remote Control
S778-40C-0 & S778-37-0	Computer and Display
S778-44-0	K-Band Directional Antenna

OPTIONS:

S769-116-0	Cable for the detachable display	\$35.00
-------------------	----------------------------------	---------



S773-235A-0



S769-105-0



S778-44-0



S900-25 or S900-26



User Manual



S778-41-0



S778-40C-0 & S778-37-0



optional

S769-116-0



Genesis II Select/Directional

(K-Band Directional Single Antenna with Mirror Display) G2M RADAR

MSRP - \$1,595.00



The Genesis II Select™ with rear view mirror display and a K-Band Directional antenna. Available in MPH (Kit# KDMPH) or in KPH (Kit# KDKPH).

INCLUDED:

S773-235A-0	Windshield Mounting Bracket
S769-105-0	8 Foot Antenna Cable
Warr 2	2 Year Warranty
US Manual	User Manual
S900-25	Tuning Forks: 35.2 / 65.6 (When Ordered in MPH)
S900-26	Tuning Forks: 55.2 / 105.6 (When Ordered in KPH)
S778-41-0	Hand Remote Control
S778-40C-0	Genesis II Select Computer
S778-44-0	K-Band Directional Antenna
S778-60-0	Radar Rear View Mirror Display



S773-235A-0



S769-105-0



S778-44-0



S900-25 or S900-26



User Manual



S778-41-0



S778-40C-0



S778-60-0



Genesis II Select

(K-Band Single Antenna) G2S RADAR

MSRP - \$1,495.00



The Genesis II Select™ features a compact design with detachable display and functions such as same direction, faster target and moving/stationary modes. Available in MPH (Kit# KMPH) or in KPH (Kit# KKPH). Special features available for North Carolina (Kit# NCK).

INCLUDED:

S773-235A-0	Windshield Mounting Bracket
S769-105-0	8 Foot Antenna Cable
Warr 5	5 Year Warranty
U.S. Manual	User Manual
S900-25	Tuning Forks: 35.2 / 65.6 (When Ordered in MPH)
S900-26	Tuning Forks: 55.2 / 105.6 (When Ordered in KPH)
S778-41-0	Hand Remote Control
S778-40C-0 & S778-37-0	Computer and Display
S778-43-0	K-Band Antenna

OPTIONS:

S769-116-0	Cable for the Detachable Display	\$35.00
-------------------	----------------------------------	---------



S773-235A-0



S769-105-0



S778-43-0



S900-25 or S900-26



User Manual



S778-41-0



S778-40C-0 & S778-37-0



optional

S769-116-0



Genesis II Select

(K-Band Single Antenna with Mirror Display) G2M RADAR

MSRP - \$1,495.00



The Genesis II Select™ with rear view mirror display and a K-Band antenna. Includes features such as same direction, faster target and moving/stationary modes. Available in MPH (Kit# KMPH) or in KPH (Kit# KKPH).

INCLUDED:

S773-235A-0	Windshield Mounting Bracket
S769-105-0	8 Foot Antenna Cable
Warr 2	2 Year Warranty
U.S. Manual	User Manual
S900-25	Tuning Forks: 35.2 / 65.6 (When Ordered in MPH)
S900-26	Tuning Forks: 55.2 / 105.6 (When Ordered in KPH)
S778-41-0	Hand Remote Control
S778-39-0	Genesis II Select Computer
S778-60-0	Radar Rear View Mirror Display
S778-43-0	K-Band Antenna



S773-235A-0



S769-105-0



S778-43-0



S900-25 or S900-26



User Manual



S778-41-0



S778-40C-0



S778-60-0



Genesis II Select

(Ka-Band Single Antenna) G2S RADAR

MSRP - \$1,695.00



The Ka-Band antenna offers smaller size and excellent range. Available in MPH (Kit# KAMPH) or in KPH (Kit# KAKPH). Special features available for North Carolina (Kit# NCKA).

INCLUDED:

S773-235A-0	Windshield Mounting Bracket
S769-105-0	8 Foot Antenna Cable
Warr 5	5 Year Full Warranty
U.S. Manual	User Manual
S900-22	Tuning Forks: 35.2 / 50.6 (When Ordered in MPH)
S900-27	Tuning Forks: 60.2 / 90.6 (When Ordered in KPH)
S778-41-0	Hand Remote Control
S778-40C-0 & S778-37-0	Computer and Display
S778-42-0	Ka-Band Antenna

OPTIONS:

S769-116-0	Cable for the Detachable Display	\$35.00
-------------------	----------------------------------	---------



S773-235A-0



S769-105-0



S778-42-0



S900-22 or S900-27



User Manual



S778-41-0



S778-40C-0 & S778-37-0



optional

S769-116-0



Genesis II Select

(Ka-Band Single Antenna with Mirror Display) G2M RADAR

MSRP - \$1,695.00



The Genesis II Select™ with rear view mirror display and a Ka-Band antenna. The Ka-Band antenna offers smaller size and excellent range. Available in MPH (Kit # KAMPH) or in KPH (Kit# KAKPH).

INCLUDED:

S773-235A-0	Windshield Mounting Bracket
S769-105-0	8 Foot Antenna Cable
Warr 2	2 Year Warranty
U.S. Manual	User Manual
S900-22	Tuning Forks: 35.2 / 50.6 (When Ordered in MPH)
S900-27	Tuning Forks: 60.2 / 90.6 (When Ordered in KPH)
S778-41-0	Hand Remote Control
S778-39-0	Genesis II Select Computer
S778-60-0	Radar Rear View Mirror Display
S778-42-0	Ka-Band Antenna



S773-235A-0



S769-105-0



S778-42-0



S900-22 or S900-27



User Manual



S778-41-0



S778-40C-0



S778-60-0



Genesis II Select/Directional

(K-Band Directional Dual Antenna) G2S RADAR

MSRP - \$2,095.00

The dual Directional antennas allow the operator to target vehicles from either the front or back. Available in MPH (Kit# KDDBM) or in KPH (Kit# KDDBK).



INCLUDED:

S758-34-0	Rear Deck Bracket
S773-235A-0	Windshield Mounting Bracket
S769-105-0	8 Foot Antenna Cable
S769-115-0	22 Foot Antenna Cable
Warr 5	5 Year Warranty
U.S. Manual	User Manual
S900-25	Tuning Forks: 35.2 / 65.6 (When Ordered in MPH)
S900-26	Tuning Forks: 55.2 / 105.6 (When Ordered in KPH)
S778-41-0	Hand Remote Control
S778-40C-0 & S778-37-0	Computer and Display
S778-44-0 (times 2)	K-Band Antenna

OPTIONS:

S769-116-0	Cable for the Detachable Display	\$35.00
-------------------	----------------------------------	---------



S758-34-0



S773-235A-0



S769-105-0



S769-115-0



optional

S769-116-0



S900-25 or S900-26



User Manual



S778-41-0



S778-40C-0 &
S778-37-0



S778-44-0
(times 2)



Genesis II Select/Directional

(K-Band Directional Dual Antenna with Mirror Display) G2M RADAR

MSRP - \$2,095.00



The Genesis II Select/Directional™ with rear view mirror display and dual K-Band Directional antennas. Available in MPH (Kit# KDDBM) or in KPH (Kit# KDDBK).

INCLUDED:

S773-235A-0	Windshield Mounting Bracket
S769-105-0	8 Foot Antenna Cable
S769-115-0	22 Foot Antenna Cable
Warr 2	2 Year Warranty
US Manual	User Manual
S900-25	Tuning Forks: 35.2 / 65.6 (When Ordered in MPH)
S900-26	Tuning forks: 55.2 / 105.6 (When Ordered in KPH)
S778-41-0	Hand Remote Control
S778-39-0	Genesis II Select Computer
S778-44-0 (times 2)	K-Band Directional Antennas
S778-60-0	Radar Rear View Mirror Display



S758-34-0



S778-41-0



S769-105-0



S769-115-0



S773-235A-0



S900-25 or S00-26



User Manual



S778-60-0



S78-40C-0



S778-44-0
(times 2)



Genesis II Select

(K-Band Dual Antenna) G2S RADAR

MSRP - \$1,995.00

The Genesis II Select™ features a compact design with detachable display and dual K-Band antennas. Available in MPH (Kit# KDBM) or in KPH (Kit# KDBK). Special features available for North Carolina (Kit# NCKDB).

INCLUDED:

S758-34-0	Rear Deck Bracket
S773-235A-0	Windshield Mounting Bracket
S769-105-0	8 Foot Antenna Cable
S769-115-0	22 Foot Antenna Cable
Warr 5	5 Year Warranty
U.S. Manual	User Manual
S900-25	Tuning Forks: 35.2 / 65.6 (When Ordered in MPH)
S900-26	Tuning Forks: 55.2 / 105.6 (When Ordered in KPH)
S778-41-0	Hand Remote Control
S778-40C-0 & S778-37-0	Computer and Display
S778-43-0 (times two)	K-Band Antenna

OPTIONS:

S769-116-0	Cable for the Detachable Display	\$35.00
-------------------	----------------------------------	---------



S758-34-0



S773-235A-0



S769-105-0



S769-115-0



optional

S769-116-0



S900-25 or S900-26



User Manual



S778-41-0



S778-40C-0 &
S778-37-0



S778-43-0
(times 2)



Genesis II Select

(K-Band Dual Antenna with Mirror Display) G2M RADAR

MSRP - \$1,995.00

The Genesis II Select™ with rear view mirror display and dual K-Band antennas. Available in MPH (Kit# KDBM) or in KPH (Kit# KDBK).

INCLUDED:

S758-34-0	Rear Deck Bracket
S773-235A-0	Windshield Mounting Bracket
S769-105-0	8 Foot Antenna Cable
S769-115-0	22 Foot Antenna Cable
S769-116-0	Cable for the Detachable Display
Warr 2	2 Year Warranty
U.S. Manual	User Manual
S900-25	Tuning Forks: 35.2 / 65.6 (When Ordered in MPH)
S900-26	Tuning Forks: 55.2 / 105.6 (When Ordered in KPH)
S778-41-0	Hand Remote Control
S778-39-0	Genesis II Select Computer
S778-43-0 (times two)	K-Band Antenna
S778-60-0	Radar Rear View Mirror Display



S758-34-0



S778-41-0



S769-105-0



S769-115-0



S773-235A-0



S900-25 or S900-26



User Manual



S778-60-0



S78-40C-0



S778-43-0
(times 2)



Genesis II Select

(Ka-Band Dual Antenna) G2S RADAR

MSRP - \$2,195.00



The Genesis II Select™ features a compact design with detachable display and dual Ka-Band antennas. Available in MPH (Kit# KADBM) or in KPH (Kit# KADBK). Special features available for North Carolina (Kit# NCKADB).

INCLUDED:

S758-34-0	Rear Deck Bracket
S773-235A-0	Windshield Mounting Bracket
S769-105-0	8 Foot Antenna Cable
Warr 5	5 Year Warranty
U.S. Manual	User Manual
S900-22	Tuning Forks: 35.2 / 50.6 (When Ordered in MPH)
S900-27	Tuning Forks: 60.2 / 90.6 (When Ordered in KPH)
S778-41-0	Hand Remote Control
S778-40C-0 & S778-37-0	Computer and Display
S778-42-0 (times 2)	Ka-Band Antenna

OPTIONS:

S769-116-0	Cable for the Detachable Display	\$35.00
-------------------	----------------------------------	---------



S758-34-0



S773-235A-0



S769-105-0



S769-115-0



optional

S769-116-0



S900-22 or S900-27



User Manual



S778-41-0



S778-40C-0 &
S778-37-0



S778-42-0
(times 2)



Genesis II Select

(Ka-Band Dual Antenna with Mirror Display) G2M RADAR

MSRP - \$2,195.00



The Genesis II Select™ with rear view mirror display and dual Ka-Band antennas. The Ka-band antennas offers smaller size and excellent range. Available in MPH (Kit# KADBM) or in KPH (Kit# KADBK).

INCLUDED:

S773-235A-0	Windshield Mounting Bracket
S769-105-0	8 Foot Antenna Cable
Warr 2	2 Year Warranty
U.S. Manual	User Manual
S900-22	Tuning Forks: 35.2 / 50.6 (When Ordered in MPH)
S900-27	Tuning Forks: 60.2 / 90.6 (When Ordered in KPH)
S778-41-0	Hand Remote Control
S778-39-0	Genesis II Select Computer
S778-60-0	Radar Rear View Mirror Display
S778-42-0 (times 2)	Ka-Band Antennas



S758-34-0



S778-41-0



S769-105-0



S769-115-0



S773-235A-0



S900-22 or S00-27



User Manual



S778-60-0



S78-40C-0



S778-42-0
(times 2)



Vehicle Interface Portal

S791-79C-1

MSRP - \$175.00



The VIP™ is a compact module that plugs into the diagnostic port of the vehicle improving the performance of the Genesis II Select™ line of radars. The VIP™ reading the speed information sent by the diagnostic port and then uses that information to help eliminate shadowing.

INCLUDED:

U.S. Manual	User Manual
Warr 1	1 Year Warranty

OPTIONS:

OP-701-75	2 Foot Right Angle Adapter	\$20.00
------------------	----------------------------	---------



User Manual



optional

S769-15



SpeedSpy

Covert Traffic Reporting SPEEDSPY

MSRP - \$1,995.00



The nondescript SpeedSpy™ collects traffic data using Decatur Electronics' SI-3™ radar and EZ Stat™ data logger. Available in MPH (Kit #MPH) or KPH (Kit #KPH).

INCLUDED:

U.S. Manual	User Manual
Warr 1	1 Year Warranty
S792-625-0	EZ Stat™ Data Logger
P085-1	Mounting Kit
P702-39	Battery Charger
P075-4	Weatherized Padlock with Key
P075-6	Padlock
P702-38 (times 2)	12VDC 12AH Battery
S900-34	Tuning Fork: 33.2 (When Ordered in MPH)
S900-36	Tuning Fork: 45.3 (When Ordered in KPH)



User Manual



P085-1



P702-39



S792-625-0



P075-4



P075-6



P702-38 (times 2)



S900-34 or S900-36



Responder 1000

(Responder 1000 with LCD Monitor) RESPONDER 1000

MSRP - \$3,695.00



Responder™ 1000 with a color LCD monitor. High Definition In-car video that interfaces with the Genesis II Select™ for speed overlay onto the video. (Kit# KIT13P)

INCLUDED:

S800-2058-0	Front Camera
S800-2000KP-0	R1K DVR & In-Vehicle Docking Bay
S800-2071-0	Power Module
P800-2001R	Infrared Remote Control
S800-2080	Wireless Audio Pack
S800-2063-0	Color LCD Monitor & Install Kit
S773-235A-0	Windshield Mounting Bracket
U.S. Manual	User Manual
W1	1 Year Warranty

OPTIONS:

S800-2013-0	Dual Camera Video Multiplexer Kit	\$800.00
S800-2003K-0	Office Docking Bay Assembly	\$400.00



S800-2071-0



S800-2002KP-0



S800-2058-0



S800-2063-0



S800-2080



P800-2001R



User Manual



S773-235A-0



optional

S800-2003K-0



optional

S800-2013-0



VieVu LE 3

(VieVu Wearable Video Camera) P800-110

MSRP - \$899.00



VieVu™ is a small portable video camera/recorder designed to be worn on the body giving you complete freedom of movement.

INCLUDED:

VieVu LE3

USB Cable

Wall Charger

Ear Buds

Uniform Clip

Tri-Clip

W1-V

1 Year Video Warranty

OPTIONS:

Car Charger Adapter

Car Kit

Cradle



USB Cable



Wall Charger



Ear Buds



Uniform Clip



Tri-Clip



optional

Cradle



optional

Car Charger Adapter



optional

Car Kit



OnSite Display

(OnSite Speed Display) S792-1-0 and S792-1T-0

MSRP - \$2,250.00

Custom Colors Available Upon Request. Talk to Your Local Sales Person for Pricing



The OnSite Display™ is a light weight , easy to install radar speed sign that is designed for multiple applications. Use as a stand alone speed display or use to upgrade older trailers by replacing their old display with a new one. Available with programmable timer (S792-1T-0) or without (S792-1-0).

INCLUDED:

S792-1-0	OnSite™ Radar Speed Display
-OR-	
S792-1T-0	OnSite Radar Speed Display w/Timer
S703-33.2	Tuning Fork: 33.2 (When Ordered in MPH)
S704-45.3	Tuning Fork: 45.3 (When Ordered in KPH)
U.S. Manual	User Manual
W1	1 Year Warranty

OPTIONS:

S792-0S75B	Door/Back Plate	\$350.00
S792-625-0	EZ Stat™ Data Logger	\$995.00
S792-661A-0	100's Digit Upgrade	\$150.00
S792-605A-0	Solar Panel Kit	\$625.00
P792-200A	24/7 Programmable Timer	\$90.00
P792-39A*	Amber High Visibility LED Flasher	\$75.00
P792-39B*	Blue High Visibility LED Flasher	\$75.00
P792-39C*	Red High Visibility LED Flasher	\$75.00
P792-39D*	White High Visibility LED Flasher	\$75.00

* A maximum of two flashers in any combination of color can be used



S900-34 or S900-36



User Manual

Specifications:

- Size: 7" (D) x 27" (W) x 32" (H)
- Lightweight Aluminum Construction
- 18-Inch LED Digits Visible from 1,000 Feet
- "Your Speed" Sign
- KPH or MPH Capable



Inside View of the OnSite Display



OnSite 75M

(OnSite 75M - AC version) OnSite 75

MSRP - \$2,895.00

Custom Colors Available Upon Request. Talk to Your Local Sales Person for Pricing



The OnSite 75M™ is a light weight , easy to install, pole mounted speed sign. It is AC powered for continuous use applications. Available in MPH (Kit# 110MPH) or KPH (Kit# 110KPH).

INCLUDED:

S792-1-0	OnSite™ Radar Speed Display
S792-OS75MA-0	Modular Display Mounting Kit
S703-33.2	Tuning Fork: 33.2 (When Ordered in MPH)
S704-45.3	Tuning Fork: 45.3 (When Ordered in KPH)
U.S. Manual	User Manual
W1	1 Year Warranty

OPTIONS:

S792-625-0	EZ Stat™ Data Logger	\$995.00
S792-661A-0	100's Digit Upgrade	\$150.00
P792-200A	24/7 Programmable Timer	\$90.00
P792-39A*	Amber High Visibility LED Flasher	\$75.00
P792-39B*	Blue High Visibility LED Flasher	\$75.00
P792-39C*	Red High Visibility LED Flasher	\$75.00
P792-39D*	White High Visibility LED Flasher	\$75.00

* A maximum of two flashers in any combination of color can be used



S900-34 or S900-36



User Manual

Features:

- Patrol Power Distribution System
- Lightweight Aluminum Construction
- 18-Inch LED Digits Visible from 1,000 Feet
- "Your Speed" Sign
- KPH or MPH Capable



Part of S792-OS75MA-0

P085-1



optional

S792-625-0



OnSite 75M

(OnSite 75M - Solar version) OnSite 75

MSRP - \$3,795.00

Custom Colors Available Upon Request. Talk to Your Local Sales Person for Pricing



The OnSite 75M™ is a light weight, easy to install, pole mounted speed sign. It is powered by a 12VDC battery and solar panel. Timer module included. Available in MPH (Kit# MPH) or KPH (Kit# KPH).

INCLUDED:

S792-1T-0	OnSite™ Radar Speed Display w/Timer
S792-OS75MS-0	Modular Display Mounting Kit w/Solar Panel
S703-33.2	Tuning Fork: 33.2 (When Ordered in MPH)
S704-45.3	Tuning Fork: 45.3 (When Ordered in KPH)
U.S. Manual	User Manual
W1	1 Year Warranty

OPTIONS:

S792-625-0	EZ Stat™ Data Logger	\$995.0
S792-661A-0	100's Digit Upgrade	\$150.00

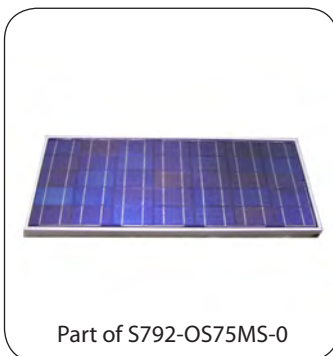


Part of S792-OS75MS-0

P085-1



User Manual



Part of S792-OS75MS-0

S792-600D



Part of S792-OS75MS-0

P702-15

Features:

- Patrol Power distribution system
- Lightweight aluminum construction
- 18-inch LED digits visible from 1,000 feet
- "Your Speed" sign
- KPH or MPH capable



S900-34 or S900-36



optional

S792-625-0



OnSite 200M

(OnSite 200M Speed Dolly) ONSITE 200

MSRP - \$3,295.00

Custom Colors Available Upon Request. Talk to Your Local Sales Person for Pricing

The OnSite 200M™ is an unmanned speed display that helps increase motorists awareness. Available in MPH (Kit# MPH) or KPH (Kit# KPH).

INCLUDED:

S792-1-0	OnSite™ Radar Speed Display
S792-73-0	"Your Speed" is Sign
U.S. Manual	User Manual
W1	1 Year Warranty
S703-33.2	Tuning Forks: 33.2 (When Ordered in MPH)
S704-45.3	Tuning Forks: 45.3 (When Ordered in KPH)
P702-15	12VDC/35AH Battery

OPTIONS:

S792-661A-0	100's Digit Upgrade	\$150.00
S792-522-0	Speed Limit Sign Kit	\$150.00
S792-625-0	EZ Stat™ Data Logger	\$995.00
S792-632B-0	Extra Battery Kit	\$160.00
S792-200A-0	Timer Module	\$90.00



User Manual



S900-34 or S900-36



P702-15
(Up to 4 Batteries)



S792-73-0



optional
S792-200A-0

Features:

- Patrol Power Distribution System
- Lightweight Aluminum Construction
- 18-inch LED Digits Visible from 1,000 Feet
- "Your Speed" Sign
- KPH or MPH Capable



optional
S792-522-0



optional
S792-625-0



OnSite 300M

(OnSite 300M Speed Trailer) ONSITE 300

MSRP - \$5,245.00

Custom Colors Available Upon Request. Talk to Your Local Sales Person for Pricing



Shown with Options

The OnSite 300M™ is an unmanned speed deterrent that monitors traffic speeds and helps increase motorists awareness. Available in MPH (Kit# MPH) and KPH (Kit# KPH)

INCLUDED:

S792-1-0	OnSite™ Radar Speed Display
U.S. Manual	User Manual
W1	1 Year Warranty
S703-33.2	Tuning Fork: 33.2 (When Ordered in MPH)
S704-45.3	Tuning Fork: 45.3 (When Ordered in KPH)

OPTIONS:

S792-661A-0	100's Digit Upgrade	\$150.00
S792-605A-0	Solar Panel Kit	\$625.00
S792-625-0	EZ Stat™ Data Logger	\$995.00
S792-632C-0	Extra Battery Kit	\$450.00
P792-200A	24/7 Programmable Timer	\$90.00
P075-4	Weatherized Padlock w/Key	\$20.00
P792-80L	Locking Tongue Hitch Pull Pin	\$20.00
S792-62-0	Pintle Hitch Kit	\$300.00
S792-607-0	Pelican Case Kit	\$425.00
S792-658 (2 required)	Locking Wheel Nuts	\$30.00 per set
S792-657	Trailer Cover	\$75.00
P792-85 (2 required)	Black Polymer Fender	\$25.00 ea.
S792-610-0 (2 max)	Traffic Cone Holder Kit	\$150.00
P792-4	10' Extension Cord	\$15.00
P792-39A*	Amber High Visibility LED Flasher	\$140.00
P792-39B*	Blue High Visibility LED Flasher	\$140.00
P792-39C*	Red High Visibility LED Flasher	\$140.00
P792-39D*	White High Visibility LED Flasher	\$140.00

* A maximum of two flashers in any combination of color can be used

Features:

- Patrol Power Distribution System
- SI-3™ Directional Antenna
- 18-Inch LED Digits Visible from 1,000 Feet
- "Your Speed" & Speed Limit Signs
- KPH or MPH Capable



S703-33.2 or S704-45.3



User Manual



optional

S792-625-0
EZ Stat Data Logger



OnSite 300M

OPTIONS

Custom Colors Available Upon Request. Talk to Your Local Sales Person for Pricing



S792-605A-0
Solar Panel Kit



S792-632C-0
Extra Battery Kit



S792-607-0
Pelican Case Kit



P792-80L
Locking Hitch Pull Pin



S792-658
Locking Wheel Nuts



P792-4
10' Extension Cord



S792-610-0
Traffic Cone Holder Kit



S792-62-0
Pintle Hitch Kit



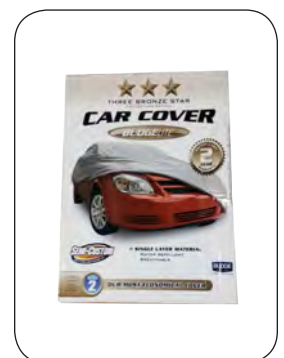
S792-200A
Programmable Timer



P075-4
Weatherized Padlock



S792-21
12 Ft. Red Vinyl Cable



S792-657
Trailer Cover



OnSite Arrow

(OnSite Arrow Trailer) ONSITE 300

MSRP - \$6,750.00

Custom Colors Available Upon Request. Talk to Your Local Sales Person for Pricing

The OnSite Arrow™ is a high visibility traffic advisor with innovative directional arrows. (Kit# ARROW)

INCLUDED:

S792-70-0	Arrow Board Sign
S792-520B-0	Speed Limit Sign
W1	1 Year Warranty
P702-15	12VDC/35AH Battery

OPTIONS:

S792-632C-0	Extra Battery Kit	\$450.00
S792-610-0 (2 max)	Traffic Cone Holder Kit	\$150.00
S792-605A-0	Solar Panel Kit	\$625.00
S792-658 (2 required)	Locking Wheel Nuts	\$30.00 per set
S792-607-0	Pelican Case Kit	\$425.00
S792-657	10 Foot Black Extension Cord	\$15.00
S792-21	12 Foot Red Vinyl Cable w/Loops	\$20.00
P075-4	Weatherized Padlock w/Key	\$ 20.00

OnSite™ Features:

- American Made Steel Frame Construction, New Modular Design
- Folding Display for Easy Transport & Storage
- Speed Limit Sign with Interchangeable Numbers
- Light Duty Trailer Chassis & Removable Tongue

Traffic Advisor Features:

- Indicates Direction with Bright Signal Sequencing
- Four Operating Modes (Left, Right, Split and Flash)
- Eight Programmable Flash Patterns
- Unique Moving Flash Patterns
- Rugged Extruded Aluminum Housing with Black Powder Coat Paint for Durability
- Meets MUTCD2000 Specifications



Shown with Options



Arrow Stick Controller



EZ Stat Data Logger

S792-625-0

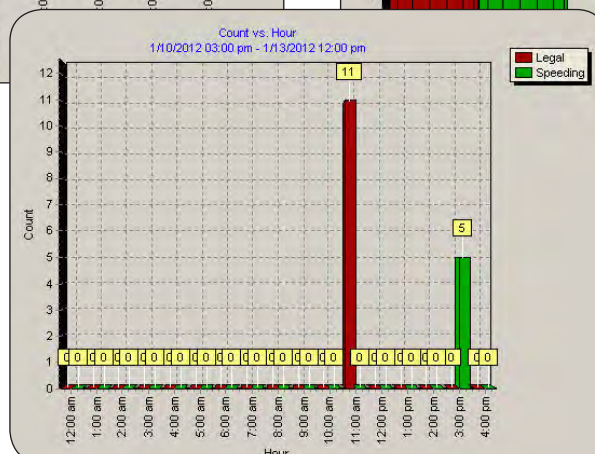
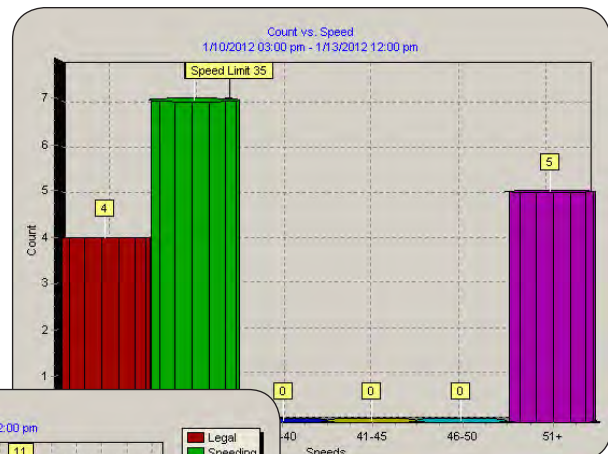
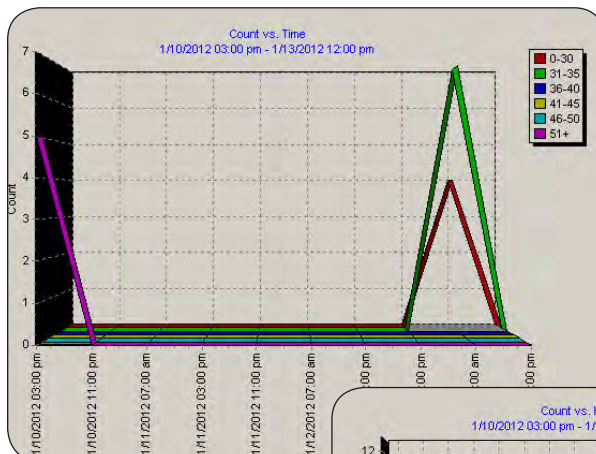
MSRP - \$995.00



The EZ Stat™ software creates user-friendly, easily analyzed traffic data charts. Data can also be exported to Microsoft Windows Excel®.

INCLUDED:

S792-625-0	EZ Stat™ Data Logger	\$995.00
U.S Manual (Includes Software)	User Manual & Software	







Tahoe SUVSSV

Technical Sheet

2015 and Newer - Fleet Wiring Solution

Model Number: 01-0215

Vehicle Information:

Make: Chevrolet
Model: Tahoe-SUVSSV
Year Range: 2015 and Newer

Panel Information:

Housing Type: Metal
Relay: 150 Amp High Current Relay
Circuit Breaker: 150 Amp
Timer: Adjustable 30 Minutes to 7.5 Hours
Head Light Flasher: NA

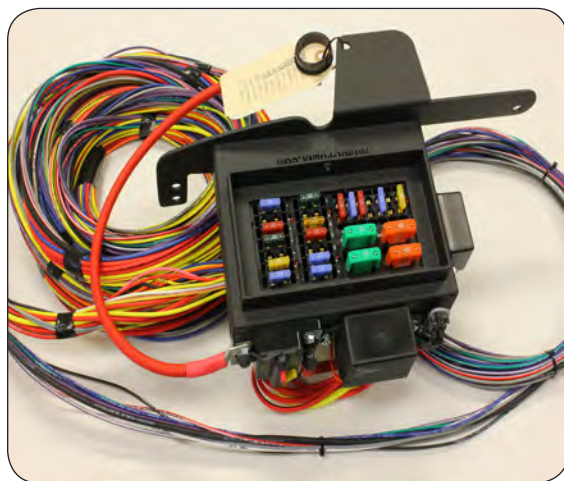
Harness Information:

Wire Type: GXL
Wire Specifications: SAE J-1128
Ford (MIL-85B)
Chrysler (MS-8900) Specifications
Wire Operating Temperature: -40°C - 125°C
Main Harness Wire Count: 25
Main Harness Length: 19 feet
Bypass Harness Wire Count: 9
Bypass Harness Length: 29 feet

Installation Information:

Mounting Location: Under Hood Driver Side Core Support
Estimated Install Time: 1 - 1.5 Hours

Shipping Weight: 24 lbs. Per Panel



Features:

- Mounting Inside the Engine Compartment
- Single Wire Battery Termination
- Color Coded and Labeled GLX Wire with Adjustable Timed Output Circuit
- Steel Housing with Wire Colored Labeled Lid



Dodge Charger Technical Sheet

2011 Fleet Wiring Solution

MSRP - \$775.00

Model Number: 02-0411

Vehicle Information:

Make: Dodge
Model: Charger
Year Range: 2011

Panel Information:

Housing Type: Metal
Relay: 150 Amp High Current Relay
Circuit Breaker: 150 Amp
Timer: Adjustable 30 Minutes to 8 Hours
Head Light Flasher: NA

Harness Information:

Wire Type: GXL
Wire Specifications: SAE J-1128
Ford (MIL-85B)
Chrysler (MS-8900) Specifications
Wire Operating Temperature: -40°C - 125°C
Main Harness Wire Count: 24
Main Harness Length: 22 feet
Bypass Harness Wire Count: 5
Bypass Harness Length: 26 feet

Installation Information:

Mounting Location: Passenger Side Wheel Well
Estimated Install Time: 1 - 1.5 Hours

Shipping Weight: 15 lbs. Per Panel



Features:

- Mounting Inside the Passenger Side Wheel Well
- Single Wire Battery Termination
- Color Coded and Labeled GLX Wire with Adjustable Timed Output Circuit
- Steel Housing with Wire Colored Labeled Lid
- High Amp Circuit Breaker
- Siren Resistor Plug



Ford Explorer / SUV Interceptor Technical Sheet

2011 - Current - Fleet Wiring Solution

MSRP - \$775.00

Model Number: 03-0211 (without 19T trunk option)

Vehicle Information:

Make: Ford
Model: Ford Explorer / SUV Interceptor
Year Range: 2011 +

Panel Information:

Housing Type: Metal
Relay: 150 Amp High Current Relay
Circuit Breaker: 150 Amp
Timer: Adjustable 15 Minutes to 7.5 Hours
Head Light Flasher: NA

Harness Information:

Wire Type: GLX
Wire Specifications: SAE J-1128
Ford (MIL-85B)
Chrysler (MS-8900) Specifications
Wire Operating Temperature: -40°C - 125°C
Main Harness Wire Count: 25
Main Harness Length: 15 Feet
Bypass Harness Wire Count: 9
Bypass Harness Length: 25 feet

Installation Information:

Mounting Location: Passenger Side Inner Fender
Estimated Install Time: 1 - 1.5 Hours

Shipping Weight: 21 lbs. Per Panel



Features:

- Mounts Inside the Passenger Side Inner Fender
- Single Wire Battery Termination
- Color Coded and Labeled GLX Wire with Adjustable Timed Output Circuit
- High Amp Circuit Breaker
- Siren Resistor Plug



Ford Interceptor Technical Sheet

2011 - Current Fleet Wiring Solution

MSRP - \$775.00

Model Number: 03-0312 (with 19T trunk option)

Vehicle Information:

Make: Ford
Model: Interceptor
Year Range: 2011 +

Panel Information:

Housing Type: Metal
Relay: 150 Amp High Current Relay
Circuit Breaker: 150 Amp
Timer: Adjustable 30 Minutes to 7.5 Hours
Head Light Flasher: NA

Harness Information:

Wire Type: GXL
Wire Specifications: SAE J-1128
Ford (MIL-85B)
Chrysler (MS-8900) Specifications
Wire Operating Temperature: -40°C - 125°C
Main Harness Wire Count: 25
Main Harness Length: 22 feet
Bypass Harness Wire Count: 6
Bypass Harness Length: 27 feet

Installation Information:

Mounting Location: Passenger Side Trunk
Estimated Install Time: 1 - 1.5 Hours
Shipping Weight: 24 lbs. Per Panel



Features:

- Mounts Inside the Driver's Side Trunk
- Single Wire Battery Termination
- Color Coded and Labeled GLX Wire with Adjustable Timed Output Circuit
- High Amp Circuit Breaker



Ford Interceptor Technial Sheet

2011 - Current - Fleet Wiring Solution

MSRP - \$775.00

Model Number: 03-0313 (without 19T trunk option)

Vehicle Information:

Make: Ford
Model: Interceptor
Year Range: 2011 +

Panel Information:

Housing Type: Metal
Relay: 150 Amp High Current Relay
Circuit Breaker: 150 Amp
Timer: Adjustable 30 Minutes to 7.5 Hours
Head Light Flasher: NA

Harness Information:

Wire Type: GXL
Wire Specifications: SAE J-1128
Ford (MIL-85B)
Chrysler (MS-8900) Specifications
Wire Operating Temperature: -40°C - 125°C
Main Harness Wire Count: 25
Main Harness Length: 22 feet
Bypass Harness Wire Count: 6
Bypass Harness Length: 27 feet

Installation Information:

Mounting Location: Passenger Side Trunk
Estimated Install Time: 1 - 1.5 Hours

Shipping Weight: 24 lbs. Per Panel



Features:

- Mounts Inside the Driver's Side Trunk
- Single Wire Battery Termination
- Color Coded and Labeled GLX Wire with Adjustable Timed Output Circuit
- High Amp Circuit Breaker



Mini Universal Panel Technical Sheet

All Years - Fleet Wiring Solutions

MSRP - \$475.00

Model Number: 04-0208

Vehicle Information:

Make: Mini Universal
Model: N/A
Year Range: All

Panel Information:

Housing Type: Metal
Relay: 150 Amp High Current Relay
Circuit Breaker: 150 Amp
Timer: Adjustable 30 Minutes to 8 Hours
Head Light Flasher: NA

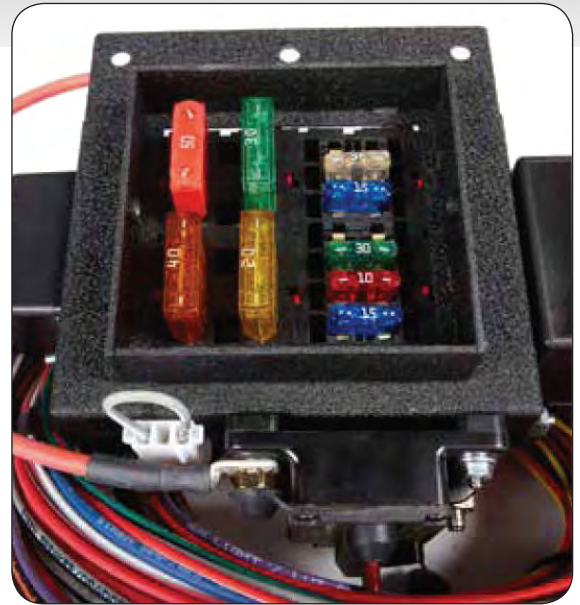
Harness Information:

Wire Type: GLX
Wire Specifications: SAE J-1128
Ford (MIL-85B)
Chrysler (MS-8900) Specifications
Wire Operating Temperature: -40°C - 125°C
Main Harness Wire Count: 10
Main Harness Length: 19 feet
Bypass Harness Wire Count: 5
Bypass Harness Length: 28 feet

Installation Information:

Mounting Location: Any
Estimated Install Time: 1 - 1.5 Hours

Shipping Weight: 11 lbs. Per Panel



Features:

- Universal Mounting Inside the Vehicle or Inside the Engine Compartment
- Single Wire Battery Termination
- Ten Circuit Color Coded and Labeled GLX Wire with Adjustable Timed Output Circuit
- Compact Steel Housing with Wire Colored Labeled Lid
- High Amp Circuit Breaker
- Siren Resistor Plug