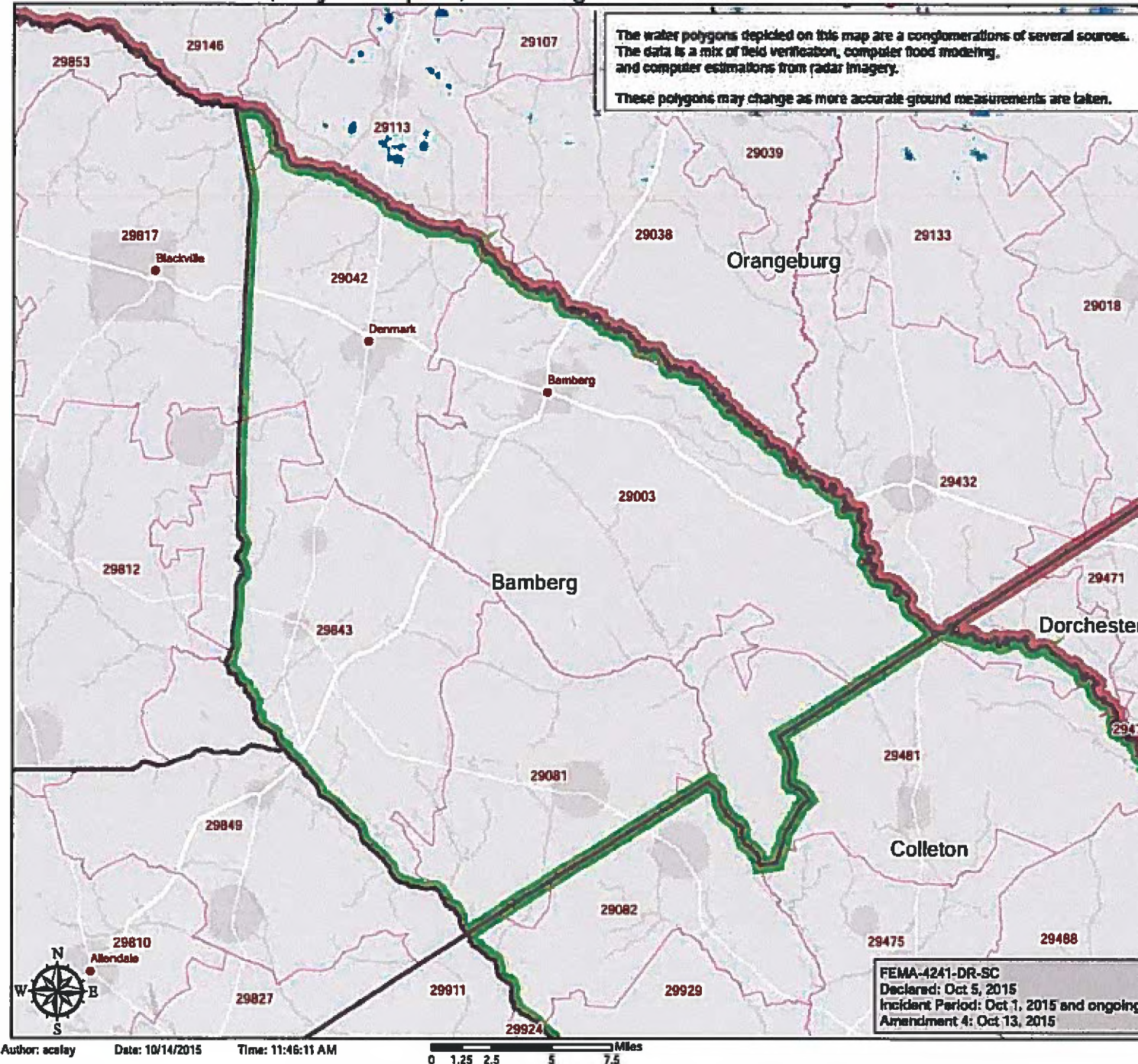


FEMA-DR-4241- South Carolina Severe Storms and Flooding

Flood Inundation Data (not yet complete) and Designated Counties



FEMA



Bamberg



Data Layer / Map Description:
Designated Counties
As of 10/14/2015
Flood Inundation Data:
USGS as of 20151011
NGA as of 20151011

Legend

- USGS High Water Mark Polys
- Potential Dam Inundation Model
- NGA Flooding Assessment
- Radar Flooding Inundation
- Zip Codes
- Counties
- Designated Counties
 - IA (3)
 - IAPA (2)

Disclaimer: This map is a graphic representation of data obtained from various sources. All efforts have been made to warrant the accuracy of this map. However, SC EMD disclaims all responsibility and liability for the use of this map.

Data Sources:
FEMA, NGA, ESRI;
Datum: WGS 1984
Projection: Mercator Auxiliary Sphere

Service Layer Credits:
Esri, DeLorme, GEBCO, NOAA NGDC, and other contributors
Esri, HERE, DeLorme, MapmyIndia, ©

FEMA-DR-4241- South Carolina Severe Storms and Flooding

Flood Inundation Data (not yet complete) and Designated Counties



FEMA

The water polygons depicted on this map are a conglomeration of several sources. The data is a mix of field verification, computer flood modeling, and computer estimations from radar imagery.

These polygons may change as more accurate ground measurements are taken.

Berkeley



Data Layer / Map Description:
Designated Counties
As of 10/14/2015
Flood Inundation Data:
USGS as of 20151011
NGA as of 20151011

Legend

- USGS High Water Mark Polys
- Potential Dam Inundation Model
- NGA Flooding Assessment
- Radar Flooding Inundation
- Zip Codes
- Counties
- Designated Counties
 - IA (1)
 - IAPA (7)

Disclaimer: This map is a graphic representation of data obtained from various sources. All efforts have been made to warrant the accuracy of this map. However, SC EMD disclaims all responsibility and liability for the use of this map.

Data Sources:
FEMA, NGA, ESRI;
Datum: WGS 1984
Projection: Mercator Auxiliary Sphere

Service Layer Credits:
Esri, DeLorme, GEBCO, NOAA NGDC, and other contributors
Esri, HERE, DeLorme, MapmyIndia, ©

FEMA-4241-DR-SC
Declared: Oct 5, 2015
Incident Period: Oct 1, 2015 and ongoing
Amendment 4: Oct 13, 2015

FEMA-DR-4241- South Carolina Severe Storms and Flooding



Flood Inundation Data (not yet complete) and Designated Counties

The water polygons depicted on this map are a conglomeration of several sources. The data is a mix of field verification, computer flood modeling, and computer estimations from radar imagery.

These polygons may change as more accurate ground measurements are taken.

Calhoun



Data Layer / Map Description:
Designated Counties
As of 10/14/2015
Flood Inundation Data:
USGS as of 20151011
NGA as of 20151011

Legend

- USGS High Water Mark Polys
- Potential Dam Inundation Model
- NGA Flooding Assessment
- Radar Flooding Inundation
- Zip Codes
- Counties
- Designated Counties
 - IA (1)
 - IAPA (5)

Disclaimer: This map is a graphic representation of data obtained from various sources. All efforts have been made to warrant the accuracy of this map. However, SC EMD disclaims all responsibility and liability for the use of this map.

Data Sources:
FEMA, NGA, ESRI;
Datum: WGS 1984
Projection: Mercator Auxiliary Sphere

Service Layer Credits:
Esri, DeLorme, GEBCO, NOAA NGDC, and other contributors
Esri, HERE, DeLorme, MapmyIndia, ©

FEMA-4241-DR-SC
Declared: Oct 5, 2015
Incident Period: Oct 1, 2015 and ongoing
Amendment 4: Oct 13, 2015



Author: acelay Date: 10/14/2015 Time: 11:55:02 AM

0 1.5 3 6 9 Miles

FEMA-DR-4241- South Carolina Severe Storms and Flooding



FEMA

Flood Inundation Data (not yet complete) and Designated Counties

The water polygons depicted on this map are a conglomerations of several sources. The data is a mix of field verification, computer flood modeling, and computer estimations from radar imagery.

These polygons may change as more accurate ground measurements are taken.

Charleston



Data Layer / Map Description:
Designated Counties
As of 10/14/2015
Flood Inundation Data:
USGS as of 20151011
NGA as of 20151011

Legend

- USGS High Water Mark Polys
- Potential Dam Inundation Model
- NGA Flooding Assessment
- Radar Flooding Inundation
- Zip Codes
- Counties
- Designated Counties
 - IA (1)
 - IAPA (6)

Disclaimer: This map is a graphic representation of data obtained from various sources. All efforts have been made to warrant the accuracy of this map. However, SC EMD disclaims all responsibility and liability for the use of this map.

Data Sources:
FEMA, NGA, ESRI;
Datum: WGS 1984
Projection: Mercator Auxiliary Sphere

Service Layer Credits:
Esri, DeLorme, GEBCO, NOAA NGDC, and other contributors
Esri, HERE, DeLorme, MapmyIndia, ©

FEMA-4241-DR-SC
Declared: Oct 5, 2015
Incident Period: Oct 1, 2015 and ongoing
Amendment 4: Oct 13, 2015

Author: acalay Date: 10/14/2015 Time: 11:55:29 AM

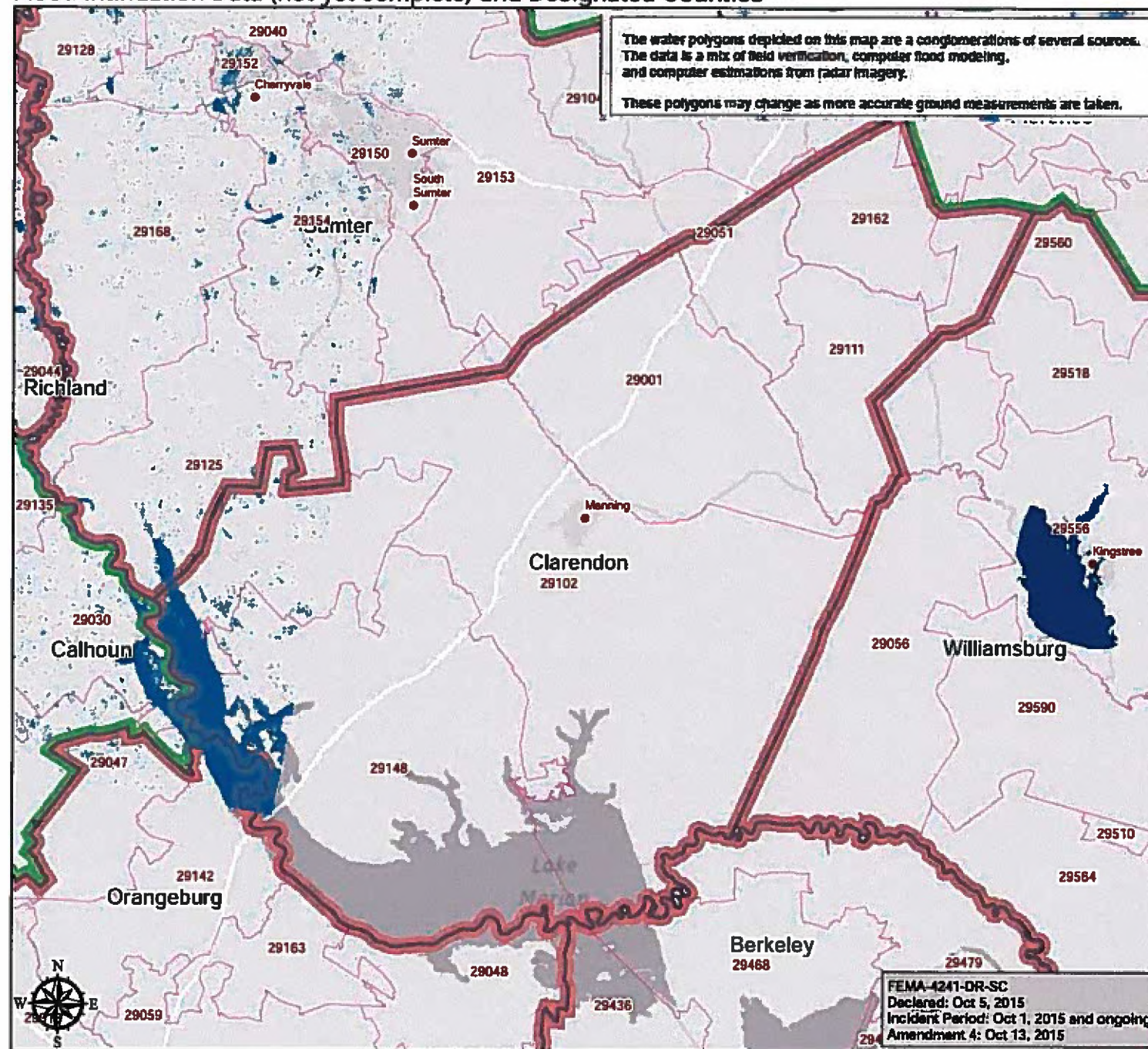
0 3 6 12 18 Miles

FEMA-DR-4241- South Carolina Severe Storms and Flooding

Flood Inundation Data (not yet complete) and Designated Counties



FEMA



Clarendon



Data Layer / Map Description:
Designated Counties
As of 10/14/2015
Flood Inundation Data:
USGS as of 20151011
NGA as of 20151011

Legend

- USGS High Water Mark Polys
- Potential Dam Inundation Model
- NGA Flooding Assessment
- Radar Flooding Inundation
- Zip Codes
- Counties
- Designated Counties
 - IA (3)
 - IAPA (6)

Disclaimer: This map is a graphic representation of data obtained from various sources. All efforts have been made to warrant the accuracy of this map. However, SC EMD disclaims all responsibility and liability for the use of this map.

Data Sources:
FEMA, NGA, ESRI;
Datum: WGS 1984
Projection: Mercator Auxiliary Sphere

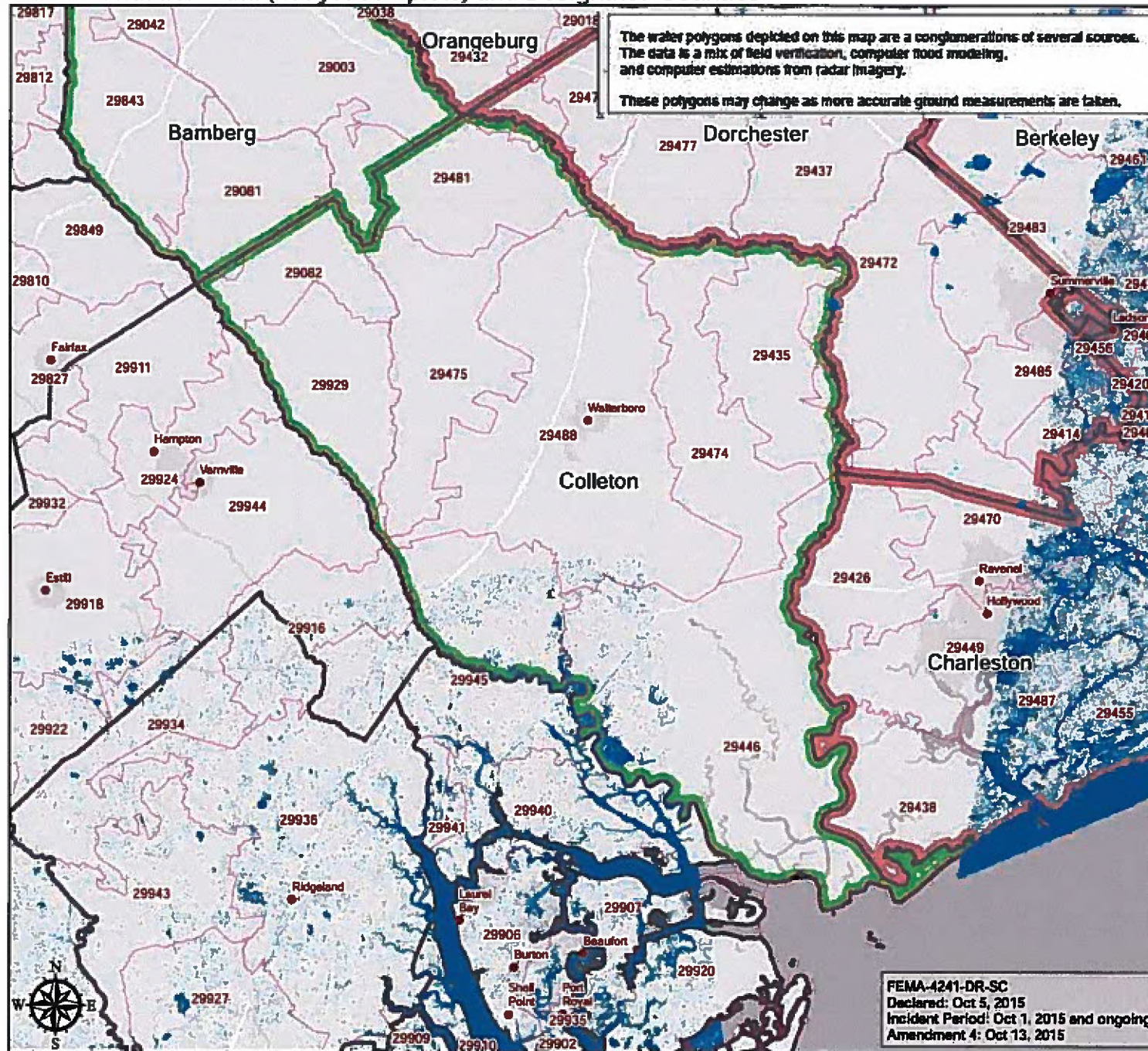
Service Layer Credits:
Esri, DeLorme, GEBCO, NOAA NGDC, and other contributors
Esri, HERE, DeLorme, MapmyIndia, ©

FEMA-4241-DR-SC
Declared: Oct 5, 2015
Incident Period: Oct 1, 2015 and ongoing
Amendment 4: Oct 13, 2015

FEMA-DR-4241- South Carolina Severe Storms and Flooding



Flood Inundation Data (not yet complete) and Designated Counties



Colleton



Data Layer / Map Description:
Designated Counties
As of 10/14/2015
Flood Inundation Data:
USGS as of 20151011
NGA as of 20151011

Legend

- USGS High Water Mark Polys
- Potential Dam Inundation Model
- NGA Flooding Assessment
- Radar Flooding Inundation
- Zip Codes
- Counties
- Designated Counties
 - IA (2)
 - IAPA (4)

Disclaimer: This map is a graphic representation of data obtained from various sources. All efforts have been made to warrant the accuracy of this map. However, SC EMD disclaims all responsibility and liability for the use of this map.

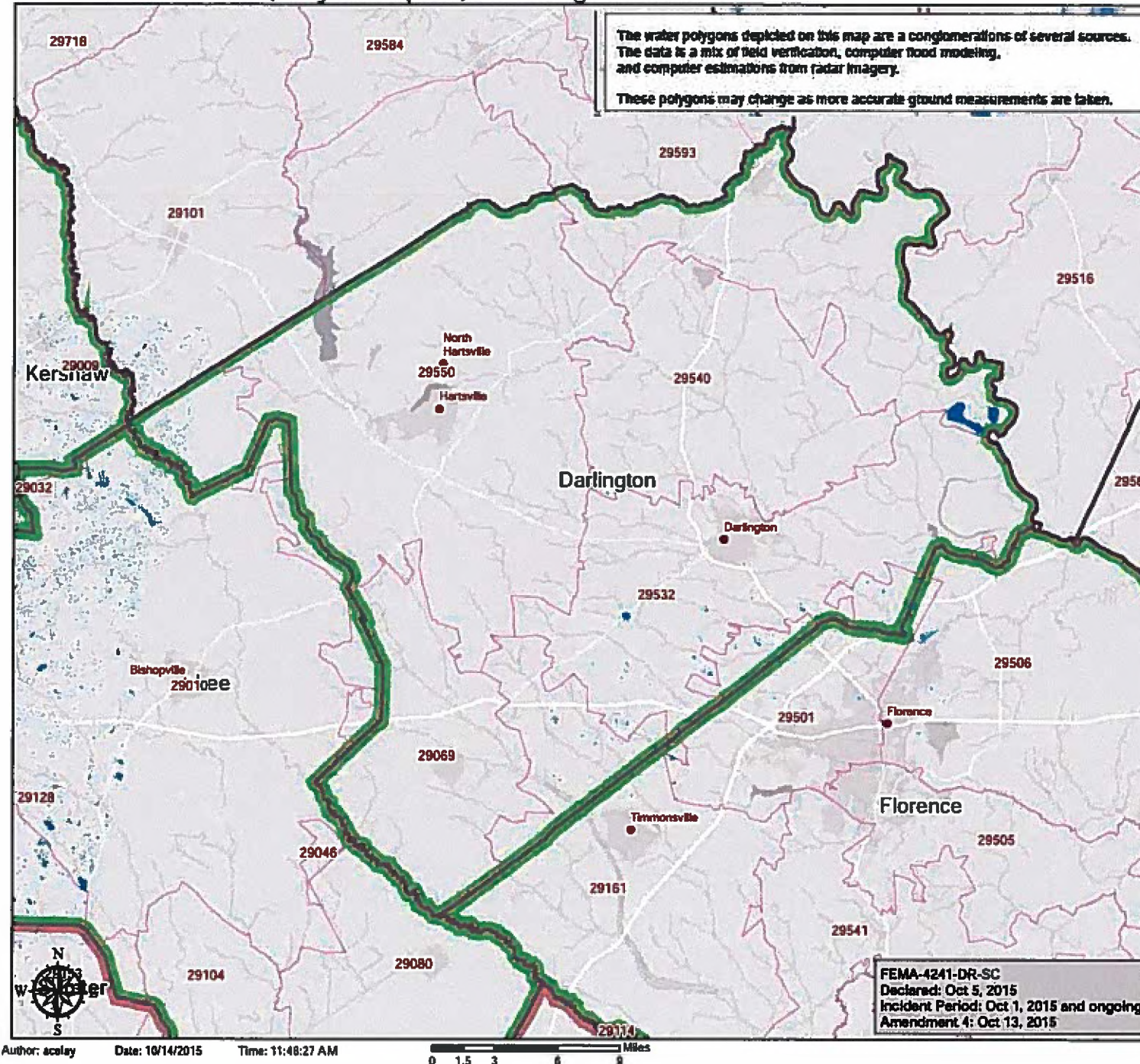
Data Sources:
FEMA, NGA, ESRI;
Datum: WGS 1984
Projection: Mercator Auxiliary Sphere

Service Layer Credits:
Esri, DeLorme, GEBCO, NOAA NGDC, and other contributors
Esri, HERE, DeLorme, MapmyIndia, ©

FEMA-4241-DR-SC
Declared: Oct 5, 2015
Incident Period: Oct 1, 2015 and ongoing
Amendment 4: Oct 13, 2015

FEMA-DR-4241- South Carolina Severe Storms and Flooding

Flood Inundation Data (not yet complete) and Designated Counties



Darlington

Data Layer / Map Description:
 Designated Counties
 As of 10/14/2015
 Flood Inundation Data:
 USGS as of 20151011
 NGA as of 20151011

Legend

- USGS High Water Mark Polys
- Potential Dam Inundation Model
- NGA Flooding Assessment
- Radar Flooding Inundation
- Zip Codes
- Counties
- Designated Counties
 - IA (4)
 - IAPA (1)

Disclaimer: This map is a graphic representation of data obtained from various sources. All efforts have been made to warrant the accuracy of this map. However, SC EMD disclaims all responsibility and liability for the use of this map.

Data Sources:
 FEMA, NGA, ESRI;
 Datum: WGS 1984
 Projection: Mercator Auxiliary Sphere

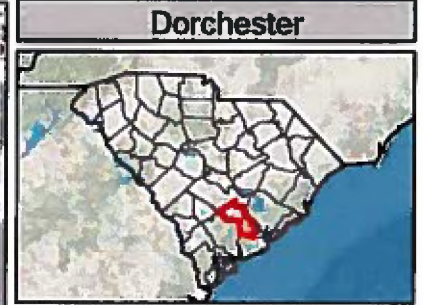
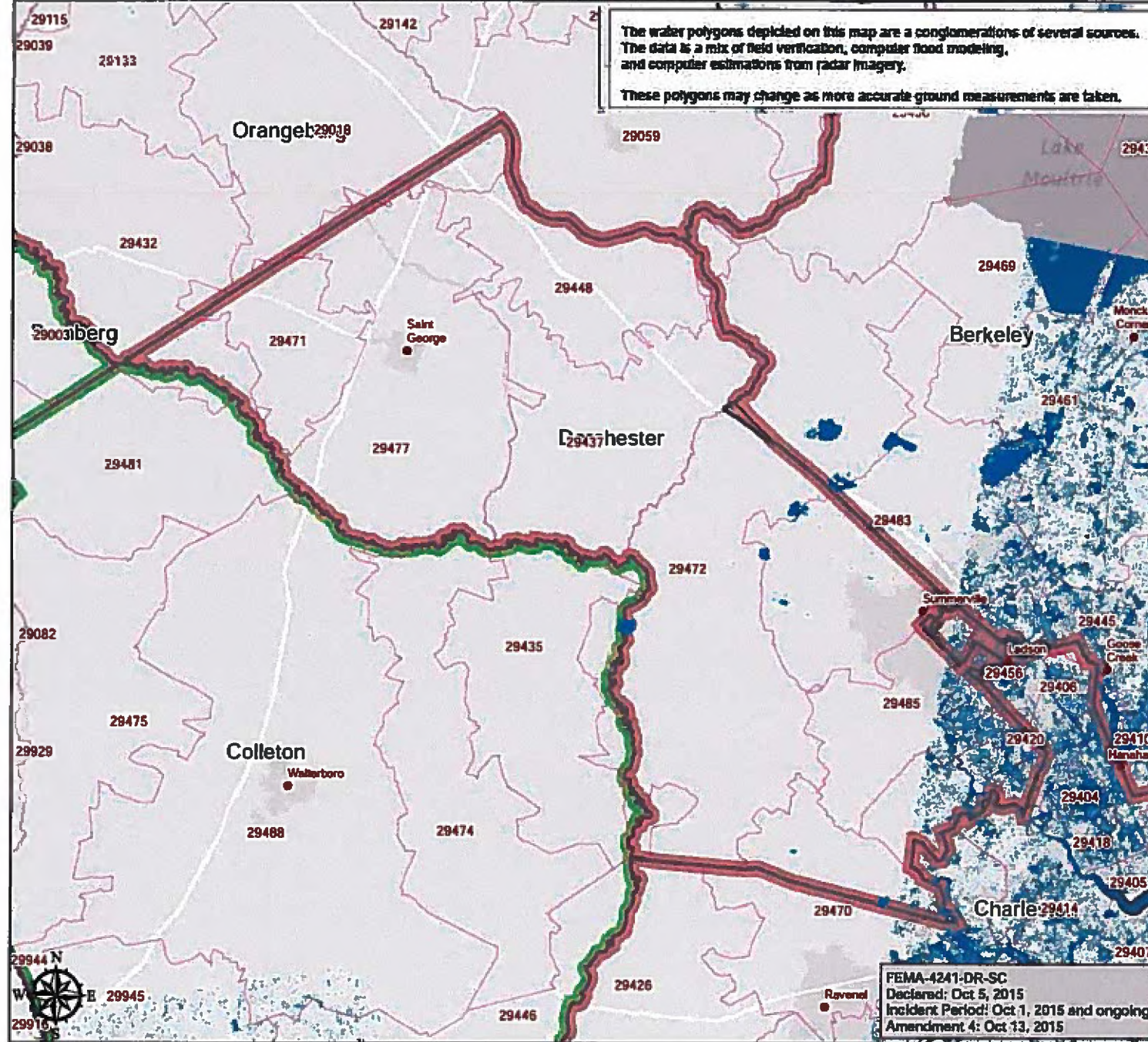
Service Layer Credits:
 Esri, DeLorme, GEBCO, NOAA NGDC, and other contributors
 Esri, HERE, DeLorme, MapmyIndia, ©

FEMA-DR-4241- South Carolina Severe Storms and Flooding



Flood Inundation Data (not yet complete) and Designated Counties

The water polygons depicted on this map are a conglomeration of several sources. The data is a mix of field verification, computer flood modeling, and computer estimations from radar imagery. These polygons may change as more accurate ground measurements are taken.



Data Layer / Map Description:
Designated Counties
As of 10/14/2015
Flood Inundation Data:
USGS as of 20151011
NGA as of 20151011

Legend

- USGS High Water Mark Polys
- Potential Dam Inundation Model
- NGA Flooding Assessment
- Radar Flooding Inundation
- Zip Codes
- Counties
- Designated Counties
 - IA (2)
 - IAPA (4)

Disclaimer: This map is a graphic representation of data obtained from various sources. All efforts have been made to warrant the accuracy of this map. However, SC EMD disclaims all responsibility and liability for the use of this map.

Data Sources:
FEMA, NGA, ESRI;
Datum: WGS 1984
Projection: Mercator Auxiliary Sphere

Service Layer Credits:
Esri, DeLorme, GEBCO, NOAA NGDC, and other contributors
Esri, HERE, DeLorme, MapmyIndia, ©

FEMA-4241-DR-SC
Declared: Oct 5, 2015
Incident Period: Oct 1, 2015 and ongoing
Amendment 4: Oct 13, 2015

FEMA-DR-4241- South Carolina Severe Storms and Flooding



Flood Inundation Data (not yet complete) and Designated Counties

The water polygons depicted on this map are a conglomeration of several sources. The data is a mix of field verification, computer flood modeling, and computer estimations from radar imagery.

These polygons may change as more accurate ground measurements are taken.

Florence



Data Layer / Map Description:
Designated Counties
As of 10/14/2015
Flood Inundation Data:
USGS as of 20151011
NGA as of 20151011

Legend

- USGS High Water Mark Polys
- Potential Dam Inundation Model
- NGA Flooding Assessment
- Radar Flooding Inundation
- Zip Codes
- Counties
- Designated Counties
 - IA (3)
 - IAPA (5)

Disclaimer: This map is a graphic representation of data obtained from various sources. All efforts have been made to warrant the accuracy of this map. However, SC EMD disclaims all responsibility and liability for the use of this map.

Data Sources:
FEMA, NGA, ESRI;
Datum: WGS 1984
Projection: Mercator Auxiliary Sphere

Service Layer Credits:
Esri, DeLorme, GEBCO, NOAA NGDC, and other contributors
Esri, HERE, DeLorme, MapmyIndia, ©

Author: acalay Date: 10/14/2015 Time: 11:48:54 AM

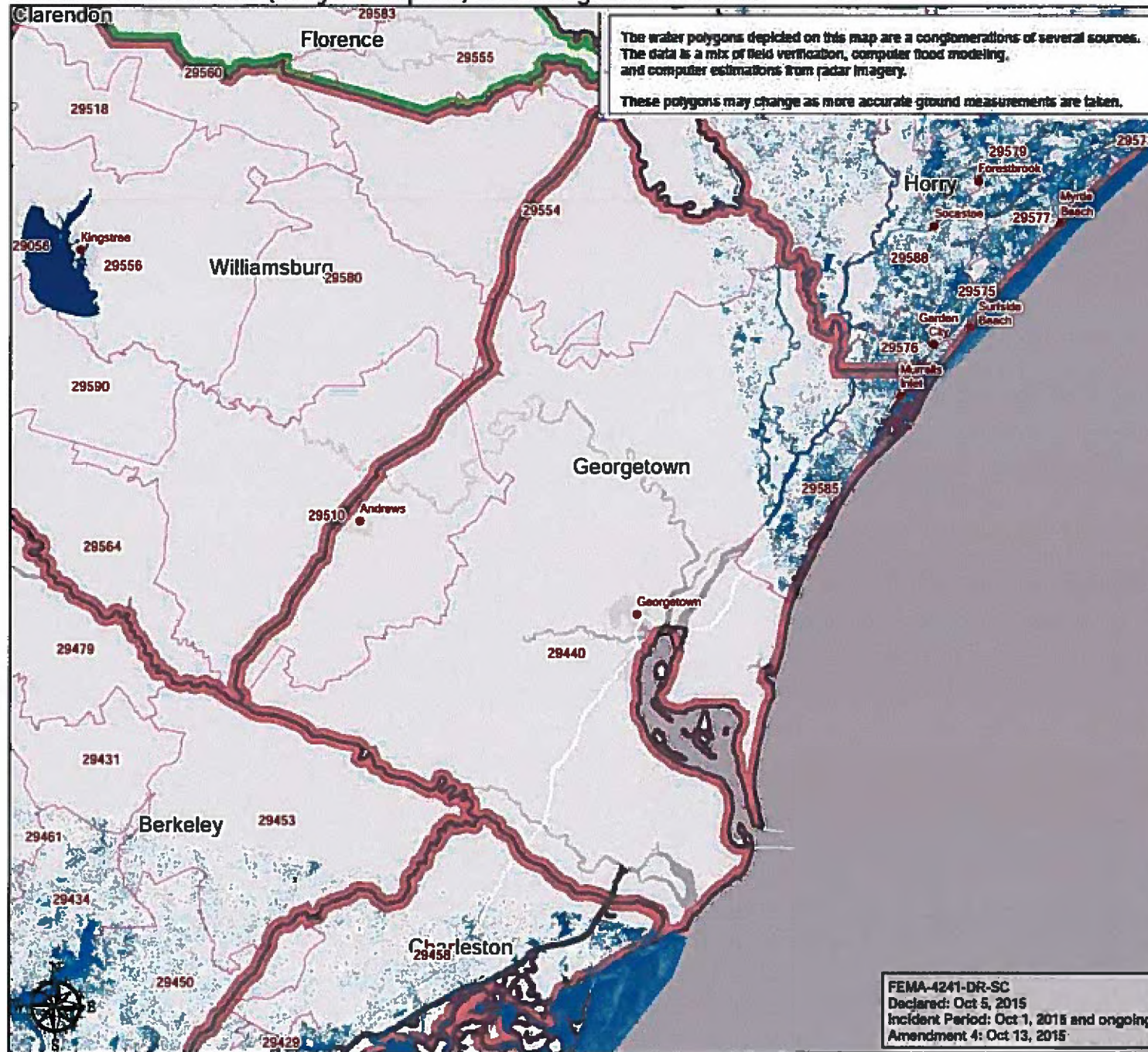
0 2 4 8 12 Miles

FEMA-4241-DR-SC
Declared: Oct 5, 2015
Incident Period: Oct 1, 2015 and ongoing
Amendment 4: Oct 13, 2015

FEMA-DR-4241- South Carolina Severe Storms and Flooding



Flood Inundation Data (not yet complete) and Designated Counties



Data Layer / Map Description:
Designated Counties
As of 10/14/2015
Flood Inundation Data:
USGS as of 20151011
NGA as of 20151011

Legend

- USGS High Water Mark Polys
- Potential Dam Inundation Model
- NGA Flooding Assessment
- Radar Flooding Inundation
- Zip Codes
- Counties
- Designated Counties
 - IA (1)
 - IAPA (6)

Disclaimer: This map is a graphic representation of data obtained from various sources. All efforts have been made to warrant the accuracy of this map. However, SC EMD disclaims all responsibility and liability for the use of this map.

Data Sources:
FEMA, NGA, ESRI;
Datum: WGS 1984
Projection: Mercator Auxiliary Sphere

Service Layer Credits:
Esri, DeLorme, GEBCO, NOAA NGDC, and other contributors
Esri, HERE, DeLorme, MapmyIndia, ©

FEMA-4241-DR-SC
Declared: Oct 5, 2015
Incident Period: Oct 1, 2015 and ongoing
Amendment 4: Oct 13, 2015

FEMA-DR-4241- South Carolina Severe Storms and Flooding



FEMA

Flood Inundation Data (not yet complete) and Designated Counties

The water polygons depicted on this map are a conglomeration of several sources. The data is a mix of field verification, computer flood modeling, and computer estimations from radar imagery.

These polygons may change as more accurate ground measurements are taken.

Greenwood



Data Layer / Map Description:
Designated Counties
As of 10/14/2015
Flood Inundation Data:
USGS as of 20151011
NGA as of 20151011

Legend

- USGS High Water Mark Polys
- Potential Dam Inundation Model
- NGA Flooding Assessment
- Radar Flooding Inundation
- Zip Codes
- Counties
- Designated Counties
 - IA (2)
 - IAPA (0)

Disclaimer: This map is a graphic representation of data obtained from various sources. All efforts have been made to warrant the accuracy of this map. However, SC EMD disclaims all responsibility and liability for the use of this map.

Data Sources:
FEMA, NGA, ESRI;
Datum: WGS 1984
Projection: Mercator Auxiliary Sphere

Service Layer Credits:
Esri, DeLorme, GEBCO, NOAA NGDC, and other contributors
Esri, HERE, DeLorme, MapmyIndia, ©

FEMA-4241-DR-SC
Declared: Oct 5, 2015
Incident Period: Oct 1, 2015 and ongoing
Amendment 4: Oct 13, 2015



Author: acelay Date: 10/14/2015 Time: 11:50:40 AM

0 1.5 3 6 9 Miles

FEMA-DR-4241- South Carolina Severe Storms and Flooding



FEMA

Flood Inundation Data (not yet complete) and Designated Counties

The water polygons depicted on this map are a conglomeration of several sources. The data is a mix of field verification, computer flood modeling, and computer estimations from radar imagery.

These polygons may change as more accurate ground measurements are taken.

Horry



Data Layer / Map Description:
Designated Counties
As of 10/14/2015
Flood Inundation Data:
USGS as of 20151011
NGA as of 20151011

Legend

- USGS High Water Mark Polys
- Potential Dam Inundation Model
- NGA Flooding Assessment
- Radar Flooding Inundation
- Zip Codes
- Counties
- Designated Counties
 - IA (1)
 - IAPA (3)

Disclaimer: This map is a graphic representation of data obtained from various sources. All efforts have been made to warrant the accuracy of this map. However, SC EMD disclaims all responsibility and liability for the use of this map.

Data Sources:

FEMA, NGA, ESRI;
Datum: WGS 1984
Projection: Mercator Auxiliary Sphere

Service Layer Credits:

Esri, DeLorme, GEBCO, NOAA NGDC, and other contributors
Esri, HERE, DeLorme, MapmyIndia, ©

FEMA-4241-DR-SC

Declared: Oct 5, 2015

Incident Period: Oct 1, 2015 and ongoing

Amendment 4: Oct 13, 2015

Author: acalay Date: 10/14/2015 Time: 11:51:14 AM

0 2.5 5 10 15 Miles

FEMA-DR-4241- South Carolina Severe Storms and Flooding

Flood Inundation Data (not yet complete) and Designated Counties



FEMA

The water polygons depicted on this map are a conglomeration of several sources. The data is a mix of field verification, computer flood modeling, and computer estimations from radar imagery.

These polygons may change as more accurate ground measurements are taken.

Kershaw



Data Layer / Map Description:
Designated Counties
As of 10/14/2015
Flood Inundation Data:
USGS as of 20151011
NGA as of 20151011

Legend

- USGS High Water Mark Polys
- Potential Dam Inundation Model
- NGA Flooding Assessment
- Radar Flooding Inundation
- Zip Codes
- Counties
- Designated Counties
 - IA (3)
 - IAPA (2)

Disclaimer: This map is a graphic representation of data obtained from various sources. All efforts have been made to warrant the accuracy of this map. However, SC EMD disclaims all responsibility and liability for the use of this map.

Data Sources:
FEMA, NGA, ESRI;
Datum: WGS 1984
Projection: Mercator Auxiliary Sphere

Service Layer Credits:
Esri, DeLorme, GEBCO, NOAA NGDC, and other contributors
Esri, HERE, DeLorme, MapmyIndia, ©

FEMA-4241-DR-SC
Declared: Oct 5, 2015
Incident Period: Oct 1, 2015 and ongoing
Amendment 4: Oct 13, 2015

Author: acalay Date: 10/14/2015 Time: 11:51:53 AM

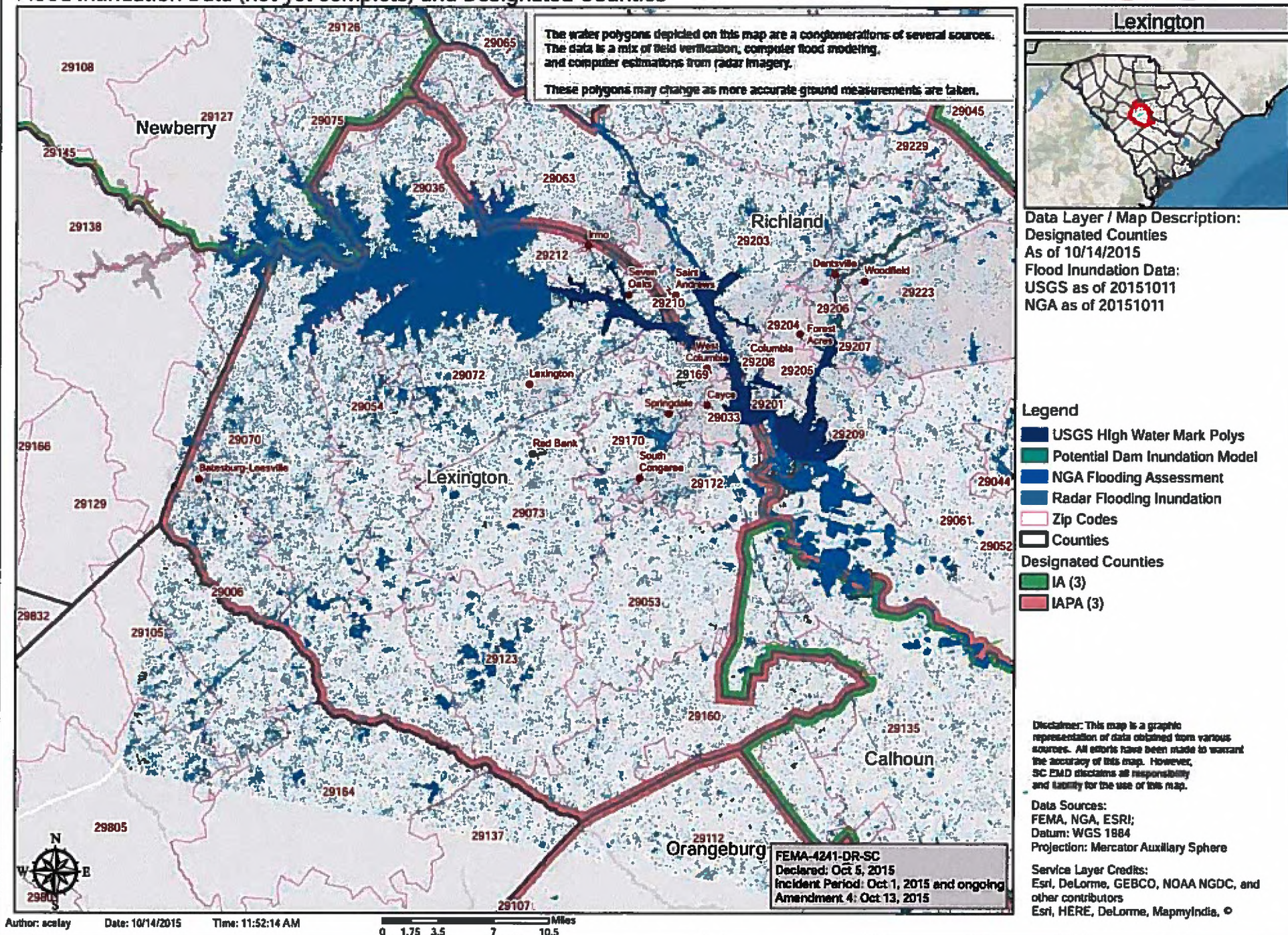
0 1.75 3.5 7 10.5 Miles

FEMA-DR-4241- South Carolina Severe Storms and Flooding

Flood Inundation Data (not yet complete) and Designated Counties



FEMA



FEMA-DR-4241- South Carolina Severe Storms and Flooding



FEMA

Flood Inundation Data (not yet complete) and Designated Counties

The water polygons depicted on this map are a conglomeration of several sources. The data is a mix of field verification, computer flood modeling, and computer estimations from radar imagery. These polygons may change as more accurate ground measurements are taken.

Newberry



Data Layer / Map Description:
Designated Counties
As of 10/14/2015
Flood Inundation Data:
USGS as of 20151011
NGA as of 20151011

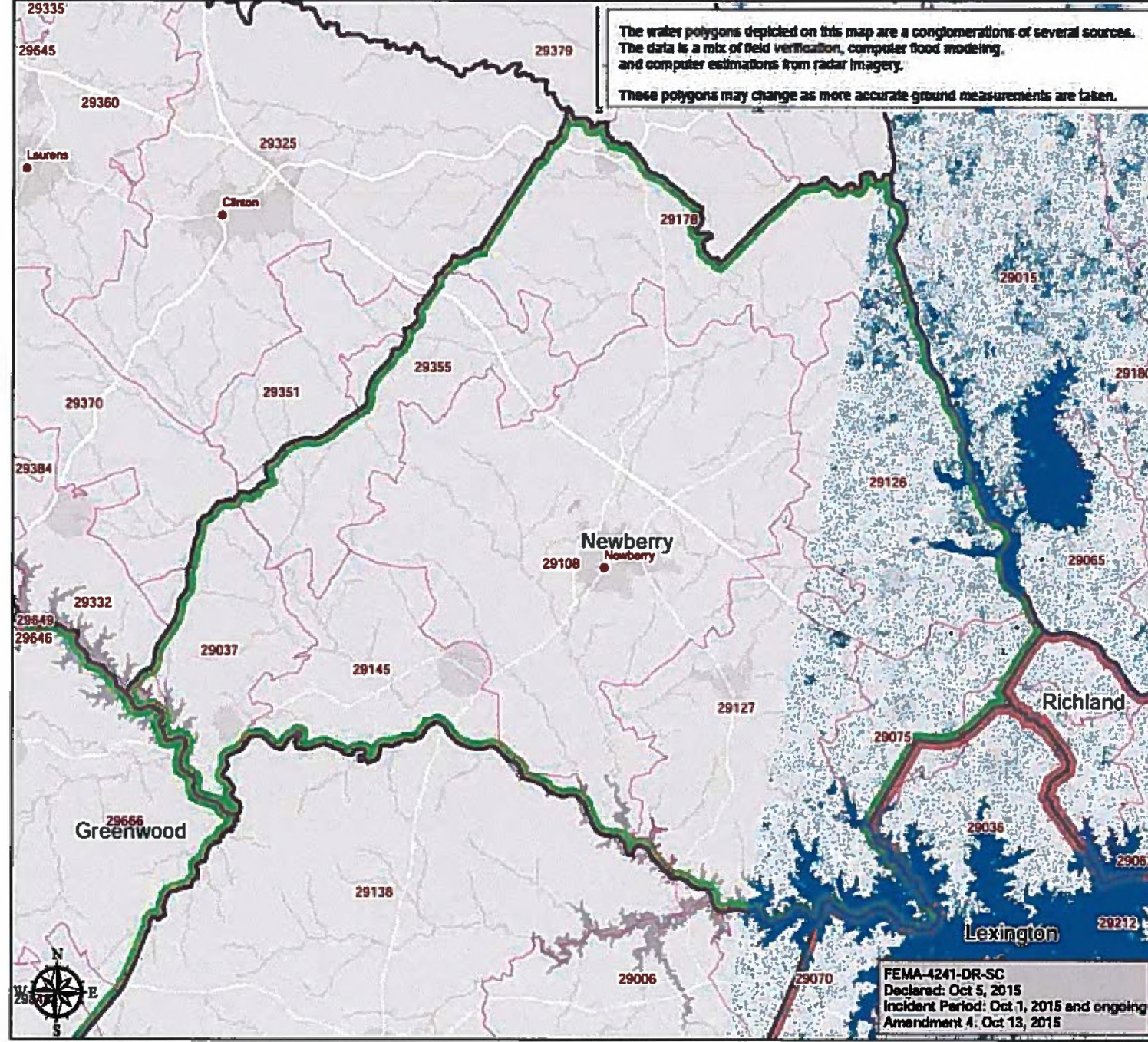
Legend

- USGS High Water Mark Polys
- Potential Dam Inundation Model
- NGA Flooding Assessment
- Radar Flooding Inundation
- Zip Codes
- Counties
- Designated Counties
 - IA (2)
 - IAPA (2)

Disclaimer: This map is a graphic representation of data obtained from various sources. All efforts have been made to warrant the accuracy of this map. However, SC EMD disclaims all responsibility and liability for the use of this map.

Data Sources:
FEMA, NGA, ESRI;
Datum: WGS 1984
Projection: Mercator Auxiliary Sphere

Service Layer Credits:
Esri, DeLorme, GEBCO, NOAA NGDC, and other contributors
Esri, HERE, DeLorme, MapmyIndia, ©



FEMA-4241-DR-SC
Declared: Oct 5, 2015
Incident Period: Oct 1, 2015 and ongoing
Amendment 4: Oct 13, 2015

FEMA-DR-4241- South Carolina Severe Storms and Flooding



FEMA

Flood Inundation Data (not yet complete) and Designated Counties

The water polygons depicted on this map are a conglomeration of several sources. The data is a mix of field verification, computer flood modeling, and computer estimations from radar imagery.

These polygons may change as more accurate ground measurements are taken.

Orangeburg



Data Layer / Map Description:
Designated Counties
As of 10/14/2015
Flood Inundation Data:
USGS as of 20151011
NGA as of 20151011

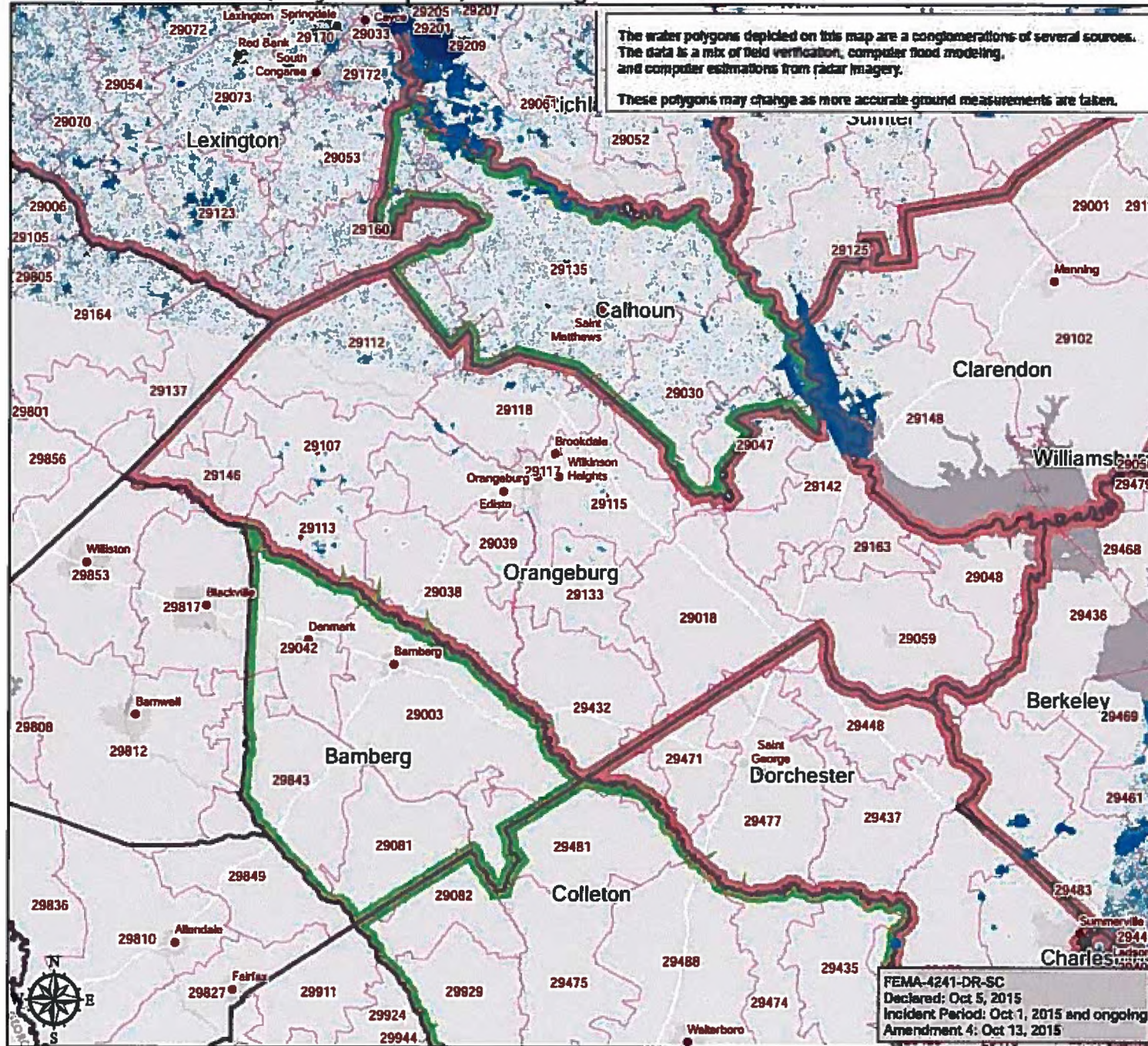
Legend

- USGS High Water Mark Polys
- Potential Dam Inundation Model
- NGA Flooding Assessment
- Radar Flooding Inundation
- Zip Codes
- Counties
- Designated Counties
- IA (4)
- IAPA (9)

Disclaimer: This map is a graphic representation of data obtained from various sources. All efforts have been made to warrant the accuracy of this map. However, FEMA disclaims all responsibility and liability for the use of this map.

Data Sources:
FEMA, NGA, ESRI;
Datum: WGS 1984
Projection: Mercator Auxiliary Sphere

Service Layer Credits:
Esri, DeLorme, GEBCO, NOAA NGDC, and other contributors
Esri, HERE, DeLorme, MapmyIndia, ©



FEMA-4241-DR-SC
Declared: Oct 5, 2015
Incident Period: Oct 1, 2015 and ongoing
Amendment 4: Oct 13, 2015

Author: acalay Date: 10/14/2015 Time: 11:53:22 AM

0 3 6 12 18 Miles

FEMA-DR-4241- South Carolina Severe Storms and Flooding



FEMA

Flood Inundation Data (not yet complete) and Designated Counties

The water polygons depicted on this map are a conglomeration of several sources. The data is a mix of field verification, computer flood modeling, and computer estimations from radar imagery.

These polygons may change as more accurate ground measurements are taken.

Richland



Data Layer / Map Description:
Designated Counties
As of 10/14/2015
Flood Inundation Data:
USGS as of 20151011
NGA as of 20151011

Legend

- USGS High Water Mark Polys
- Potential Dam Inundation Model
- NGA Flooding Assessment
- Radar Flooding Inundation
- Zip Codes
- Counties
- Designated Counties
 - IA (3)
 - IAPA (5)

Disclaimer: This map is a graphic representation of data obtained from various sources. All efforts have been made to warrant the accuracy of this map. However, SC EMD disclaims all responsibility and liability for the use of this map.

Data Sources:
FEMA, NGA, ESRI;
Datum: WGS 1984
Projection: Mercator Auxiliary Sphere

Service Layer Credits:
Esri, DeLorme, GEBCO, NOAA NGDC, and other contributors
Esri, HERE, DeLorme, MapmyIndia, ©

FEMA-4241-DR-SC
Declared: Oct 5, 2015
Incident Period: Oct 1, 2015 and ongoing
Amendment 4: Oct 13, 2015



Author: acalzy Date: 10/14/2015 Time: 11:53:52 AM

0 2 4 8 12 Miles

FEMA-DR-4241- South Carolina Severe Storms and Flooding



FEMA

Flood Inundation Data (not yet complete) and Designated Counties

The water polygons depicted on this map are a conglomeration of several sources. The data is a mix of field verification, computer flood modeling, and computer estimations from radar imagery.

These polygons may change as more accurate ground measurements are taken.

Sumter



Data Layer / Map Description:
Designated Counties
As of 10/14/2015
Flood Inundation Data:
USGS as of 20151011
NGA as of 20151011

Legend

- USGS High Water Mark Polys
- Potential Dam Inundation Model
- NGA Flooding Assessment
- Radar Flooding Inundation
- Zip Codes
- Counties
- Designated Counties
 - IA (5)
 - IAPA (5)

Disclaimer: This map is a graphic representation of data obtained from various sources. All efforts have been made to warrant the accuracy of this map. However, SC EMD disclaims all responsibility and liability for the use of this map.

Data Sources:
FEMA, NGA, ESRI;
Datum: WGS 1984
Projection: Mercator Auxiliary Sphere

Service Layer Credits:
Esri, DeLorme, GEBCO, NOAA NGDC, and other contributors
Esri, HERE, DeLorme, MapmyIndia, ©

FEMA-4241-DR-SC
Declared: Oct 5, 2015
Incident Period: Oct 1, 2015 and ongoing
Amendment 4: Oct 13, 2015

Author: aceley Date: 10/14/2015 Time: 11:54:17 AM

0 2 4 8 12 Miles

FEMA-DR-4241- South Carolina Severe Storms and Flooding



FEMA

Flood Inundation Data (not yet complete) and Designated Counties

The water polygons depicted on this map are a conglomeration of several sources. The data is a mix of field verification, computer flood modeling, and computer estimations from radar imagery.

These polygons may change as more accurate ground measurements are taken.

Williamsburg



Data Layer / Map Description:
Designated Counties
As of 10/14/2015
Flood Inundation Data:
USGS as of 20151011
NGA as of 20151011

Legend

- USGS High Water Mark Polys
- Potential Dam Inundation Model
- NGA Flooding Assessment
- Radar Flooding Inundation
- Zip Codes
- Counties
- Designated Counties
 - IA (2)
 - IAPA (6)

Disclaimer: This map is a graphic representation of data obtained from various sources. All efforts have been made to warrant the accuracy of this map. However, SC EMD disclaims all responsibility and liability for the use of this map.

Data Sources:
FEMA, NGA, ESRI;
Datum: WGS 1984
Projection: Mercator Auxiliary Sphere

Service Layer Credits:
Esri, DeLorme, GEBCO, NOAA NGDC, and other contributors
Esri, HERE, DeLorme, MapmyIndia, ©

FEMA-4241-DR-SC
Declared: Oct 5, 2015
Incident Period: Oct 1, 2015 and ongoing
Amendment 4: Oct 13, 2015

Author: acealay Date: 10/14/2015 Time: 11:54:40 AM

0 2 4 8 12 Miles