

April 12, 2019

Mr. Joseph E. Wilkinson
Review Coordinator for Transportation Projects
State Historic Preservation Office
SC Department of Archives & History
8301 Parklane Road
Columbia, SC 29223

***RE: Phase I Cultural Resources Survey for Community Pond Road Crossing
Community Pond Dam, Richland County, South Carolina.***

The SCDOT proposes to make repairs to the dam that impounds Community Pond at Griffins Creek in Richland County. Community Pond Road (S-1174) passes over a portion of this dam. The Community Pond dam is an earthen dam constructed in the 1930s. The structure was breached during the 2015 historic rain event and as a result Community Pond Road is currently closed to traffic. Proposed repairs will principally consist of mending the breach and repairing the washed out portions of the road. The repairs will be state funded, but a United States Army Corps of Engineers (USACE) permit will be required for the project.

The Area of Potential Effect (APE) for cultural resources for the project is approximately 610 feet in length and about 98 feet in width, and is centered on the dam (**Figure 1**). This APE encompasses the maximum area in which direct impacts from the project are anticipated to occur.

A desktop review of the project location was undertaken using Google Earth, ArchSite, and historic maps and aerial photographs. The background investigation indicated that the pond associated with the dam is the only previously recorded cultural resource in the vicinity (**Figure 2**). The pond, Site No. 139-3513, was recorded in 1993 by the Jaeger Company for the Lower Richland County Historical and Architectural Survey (The Jaeger Co. 1993). It was recorded as being constructed circa 1930 and was recommended not eligible for the National Register of Historic Places (NRHP). The earliest imagery that the pond and dam are shown on is an aerial photograph from 1939 (USAAA1939) (**Figure 3**). The pond and dam are also visible on a county highway map of Richland County from 1940 and on the 1943 Eastover quadrangle (SCDOT 1940, USGS 1943) (**Figures 4 and 5**). According to the SCDOT plans library Community Pond Road (S-1174) was moved to its current alignment in 1959.

On March 27, 2019, SCDOT staff archaeologists conducted a field reconnaissance of the project area (**Figure 6**). The reconnaissance consisted of a pedestrian survey of the entire APE augmented by the excavation of shovel test pits (STPs). A total of 3 STPs were excavated (STPs 1-1, 2-1, and 2-2). The remaining portion of the APE was not shovel tested due to heavy ground disturbance such



as deep erosional gullies, the presence of the portion of the original earthen dam over which the original routing of Community Pond Road passed, slope, and wetlands. **Figures 7 through 12** are examples of how the project area looked at the time of survey and the amount of ground disturbance that was present in the project area. No previously undiscovered archaeological or historical resources were identified during this reconnaissance. The dam, both along the current alignment as well as the old alignment of Community Pond Road, was documented in the revised site card for Site No. 139-3513.

The three STPs that were excavated showed a soil profile that varied between two and four strata. STP 1-1 contained mottled gray (10YR 5/1) and brown (10YR 4/3) loamy sand to 20 centimeters below surface (cmbs). This was followed by 50 centimeters (cms) of dark yellowish-brown (10YR 4/6) sand. Stratum III contained pale brown (10YR 6/3) sand with a heavy concentration of water worn pebbles up to 75 cmbs. STP 2-1 consisted of brown (10YR 4/3) loamy sand to 10 cmbs underlain by 10 cms of strong brown (7.5YR 5/8) clay subsoil. STP 2-2 had a first stratum of dark grayish-brown (10YR 4/2) loamy sand followed by 5 cms of dark brown (10YR 3/3) sand. The third stratum consisted of pale brown (10YR 6/3) sand to 30 cmbs. Subsoil was reddish-brown (5YR 4/4) clay continuing to at least 40 cmbs.

Guidelines by the South Carolina Historic Preservation Office (SHPO) state that historic resources recorded more than 15 years ago should be updated with a revisit site card. Per this request, a revised site card for Site No. 139-3513 was submitted. The revised form described the current condition of Community Pond and also incorporated a description of the dam that impounds the pond. The pond is approximately 8 acres in size. As indicated by historical imagery the footprint of the pond has varied over time depending on how much water the dam was retaining. The approximate size of the dam can be seen in **Figure 10**. Although the dam has been breached since the 2015 historic rain event it still retains water due to a beaver dam just north of the breach. No evidence was found during background research or during the field visit to suggest that this resource is part of a historic mill pond site. See **Figures 11 – 13** for photographs of the pond and remnants of the dam as they were at the time of survey.

No previously unrecorded archaeological remains or historic resources were noted during this survey. In general, the project area was found to be heavily disturbed by erosion or to consist of sloping land or wetlands. Taking all these factors into account, SCDOT has determined that no historic properties will be affected by this project. If any resources are discovered during construction, all work would stop and your office would be notified. In regards to Site 139-3513, it is recommended not eligible for the National Register of Historic Places.

Please review this information and the accompanying Site 139-3513 revisit card and advise us if you concur with our findings. Please contact us if you have any questions.

Regards,

Tracy Martin

Digitally signed by Tracy Martin
DN: cn=Tracy Martin, o=SC
Department of Transportation,
ou=Environmental Services Division,
email=martint@scdot.org, c=US
Date: 2019.04.12 10:00:21 -04'00'

REFERENCES CITED

Jaeger Company, The

- 1993 Lower Richland County Historical and Architectural Survey. Sunrise Foundation of Lower Richland. Manuscript on file at the South Carolina Department of Archives and History.

South Carolina Department of Transportation (SCDOT)

- 1940 General Highway and Transportation Map of Richland County, South Carolina. Retrieved from University of South Carolina University Libraries, Maps Department, Digital Collections
< <http://digital.tcl.sc.edu/cdm/singleitem/collection/scrm/id/330/rec/1>>

United States Agricultural Adjustment Administration (USAAA)

- 1939 Richland County, 1939. Aerial Photograph, Sheet 16 of 21. Retrieved from University of South Carolina University Libraries, Digital Collections, South Carolina Aerial Photography Index, 1937 – 1989
< <http://digital.tcl.sc.edu/cdm/compoundobject/collection/scai/id/2230/rec/1>>

United States Geological Survey (USGS)

- 1943 1943 Eastover 1:62,500 Scale Topographic Quadrangle. Retrieved from USGS Historical Topographic Map Explorer < <http://historicalmaps.arcgis.com/usgs/>>.
- 1982 1982 Eastover 1:24,000 Scale Topographic Quadrangle. Retrieved from USGS Historical Topographic Map Explorer < <http://historicalmaps.arcgis.com/usgs/>>.

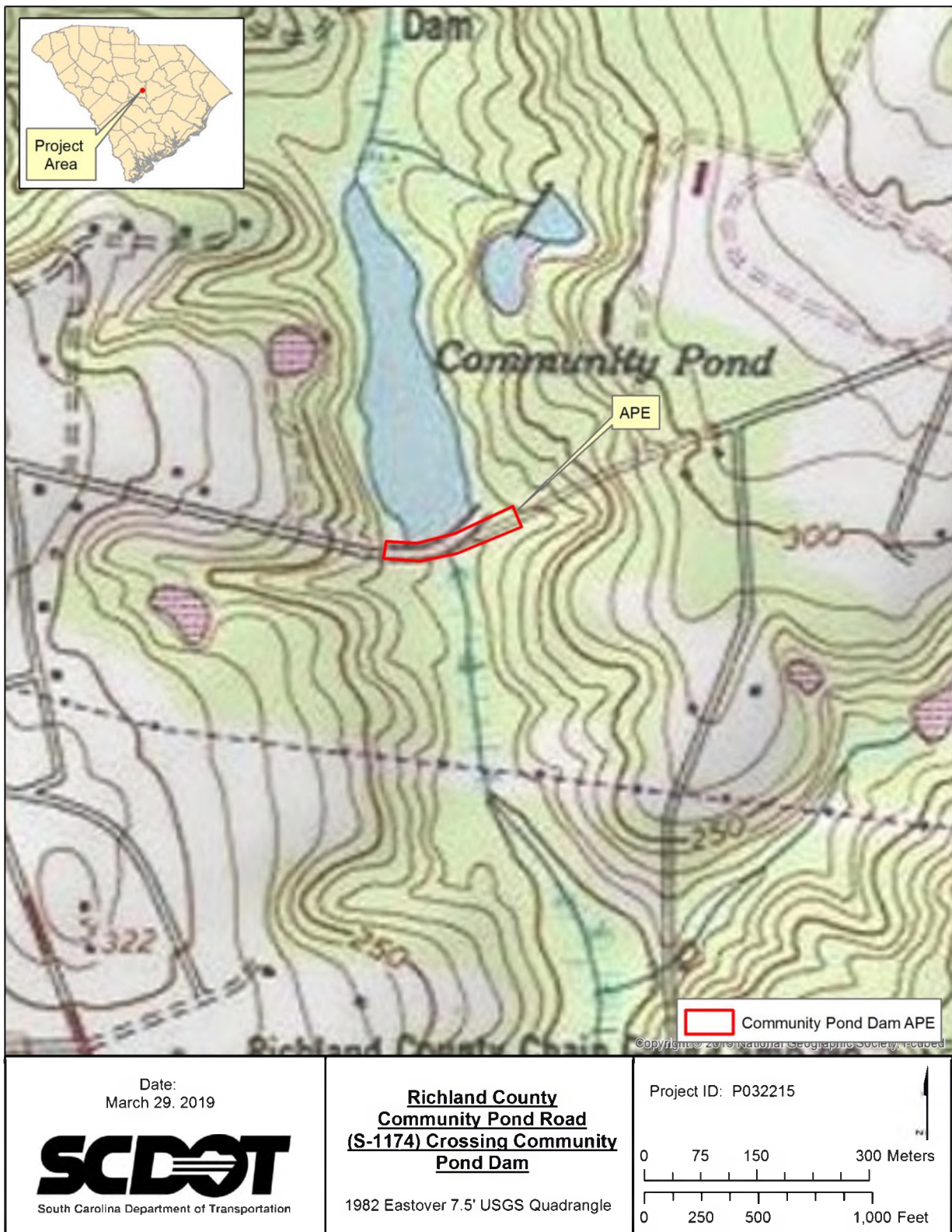


Figure 1. Map Showing Project Area (USGS 1982).

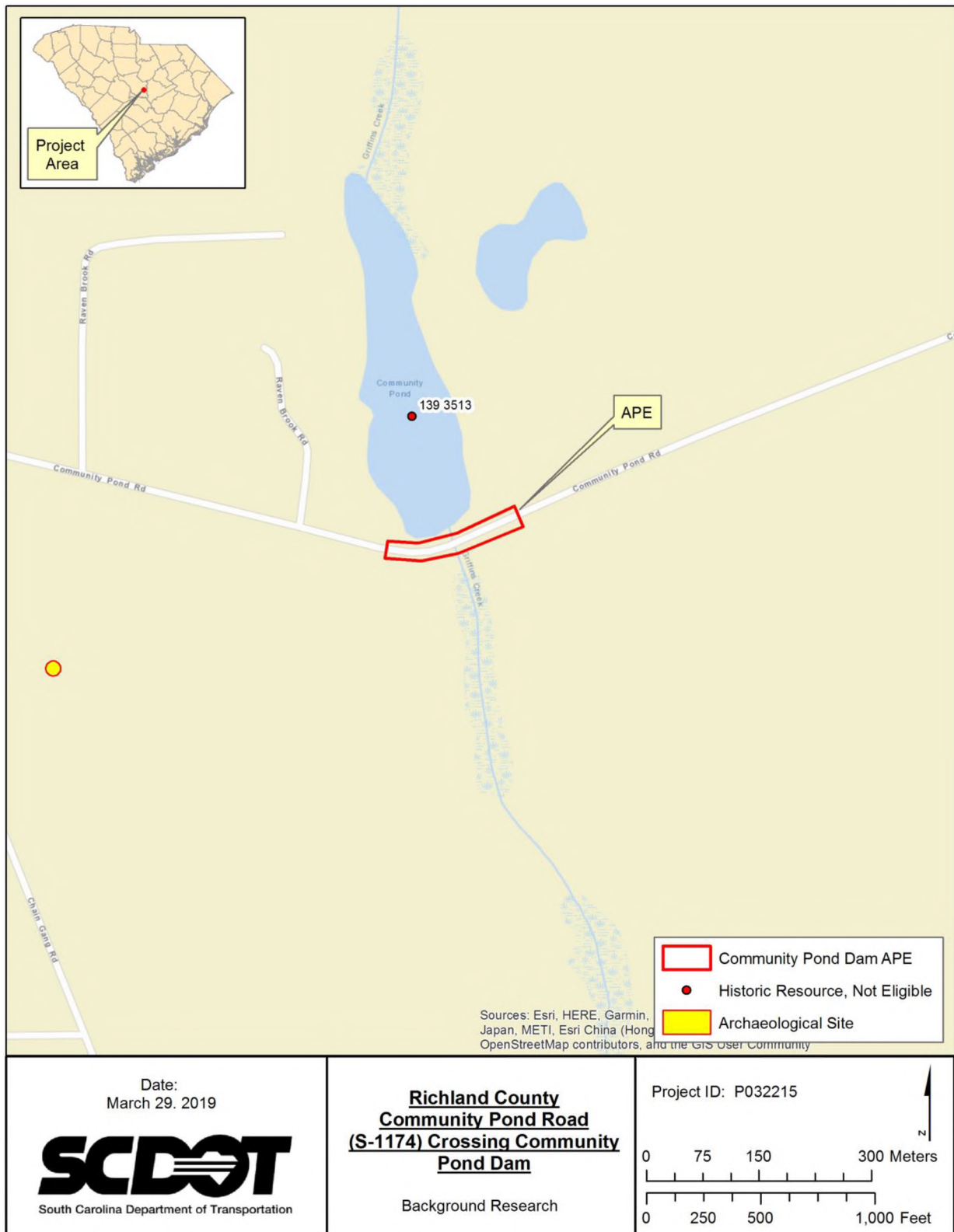


Figure 2. Background Research Map.



Figure 3. 1939 Historic Aerial Photograph Showing Project Area (USAAA 1939).



Figure 4. 1940 Richland County Highway Map Showing Project Area (SCDOT 1940).

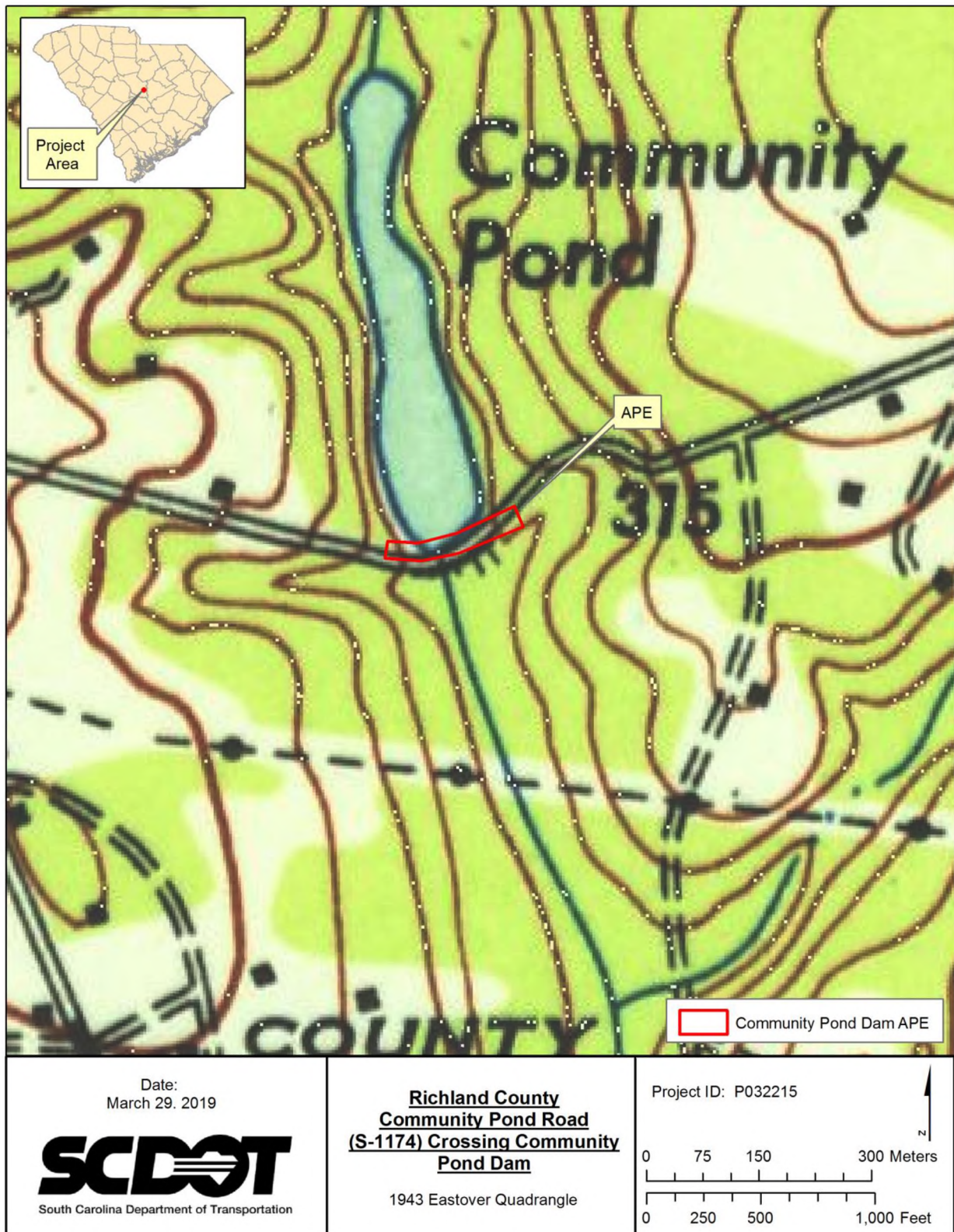


Figure 5. 1943 Quadrangle Map Showing Project Area (USGS 1943).



Figure 6. Map of Project Area Showing Shovel Test Pits and Contours.



Figure 7. View of Project Area From STP 1-2, Facing West.



Figure 8. View of Dam Breach, Facing East.



Figure 9. View Along Community Pond Road Showing Washed Out Road and Wetlands, Facing West.



Figure 10. View of Community Pond, Facing North.

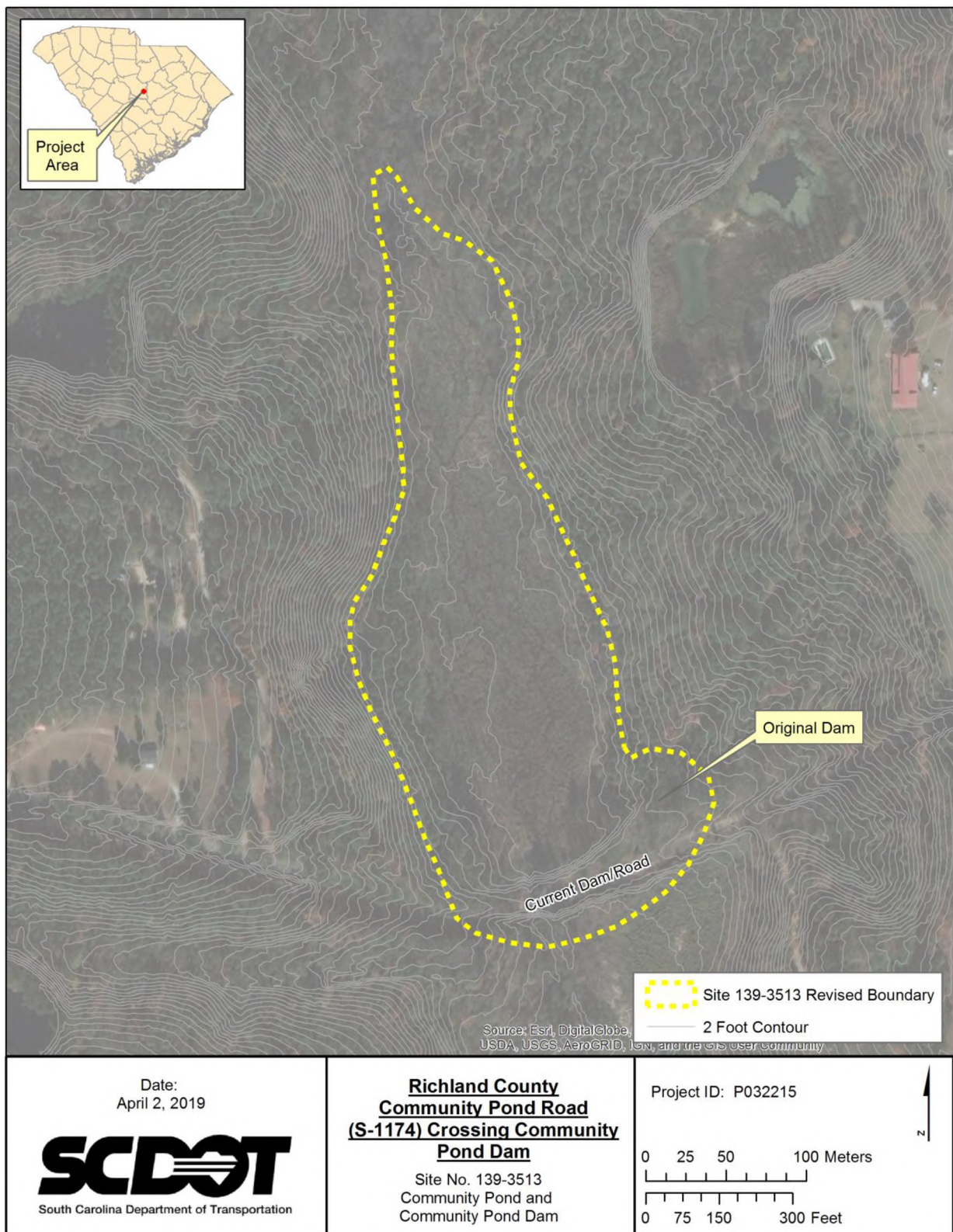


Figure 11. Site No. 139-3513, Community Pond and Community Pond Dam.



Figure 12. View of Dam/Old Road Bed, Facing Northeast.



Figure 13. View of Culvert Underneath Dam/Road Bed, Facing North.