
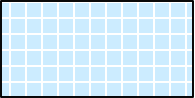
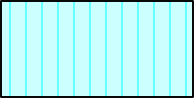



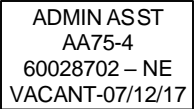
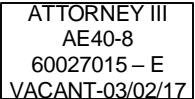
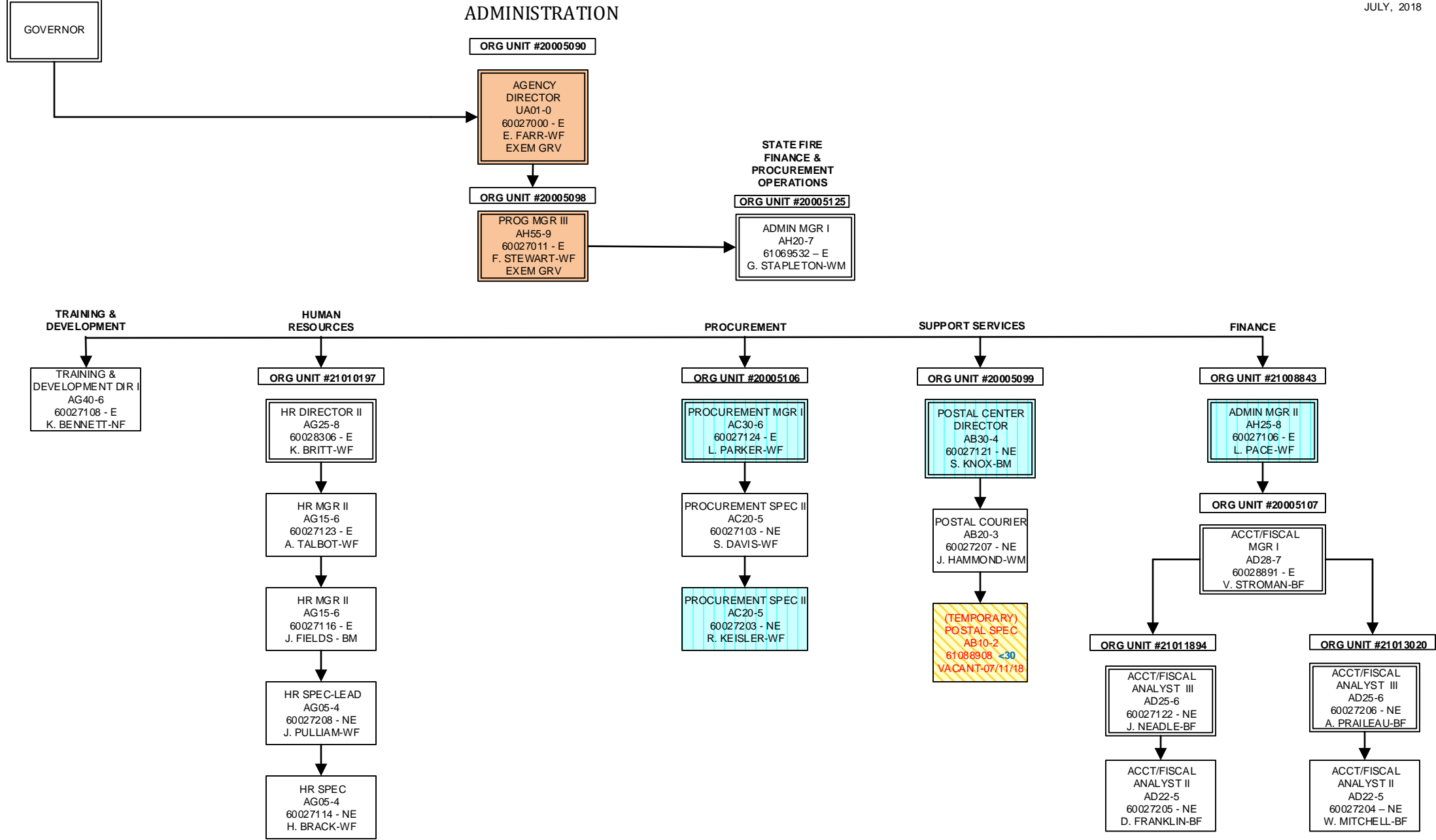


SOUTH CAROLINA
DEPARTMENT OF LABOR, LICENSING AND REGULATION
ORGANIZATIONAL CHART

JULY 2018

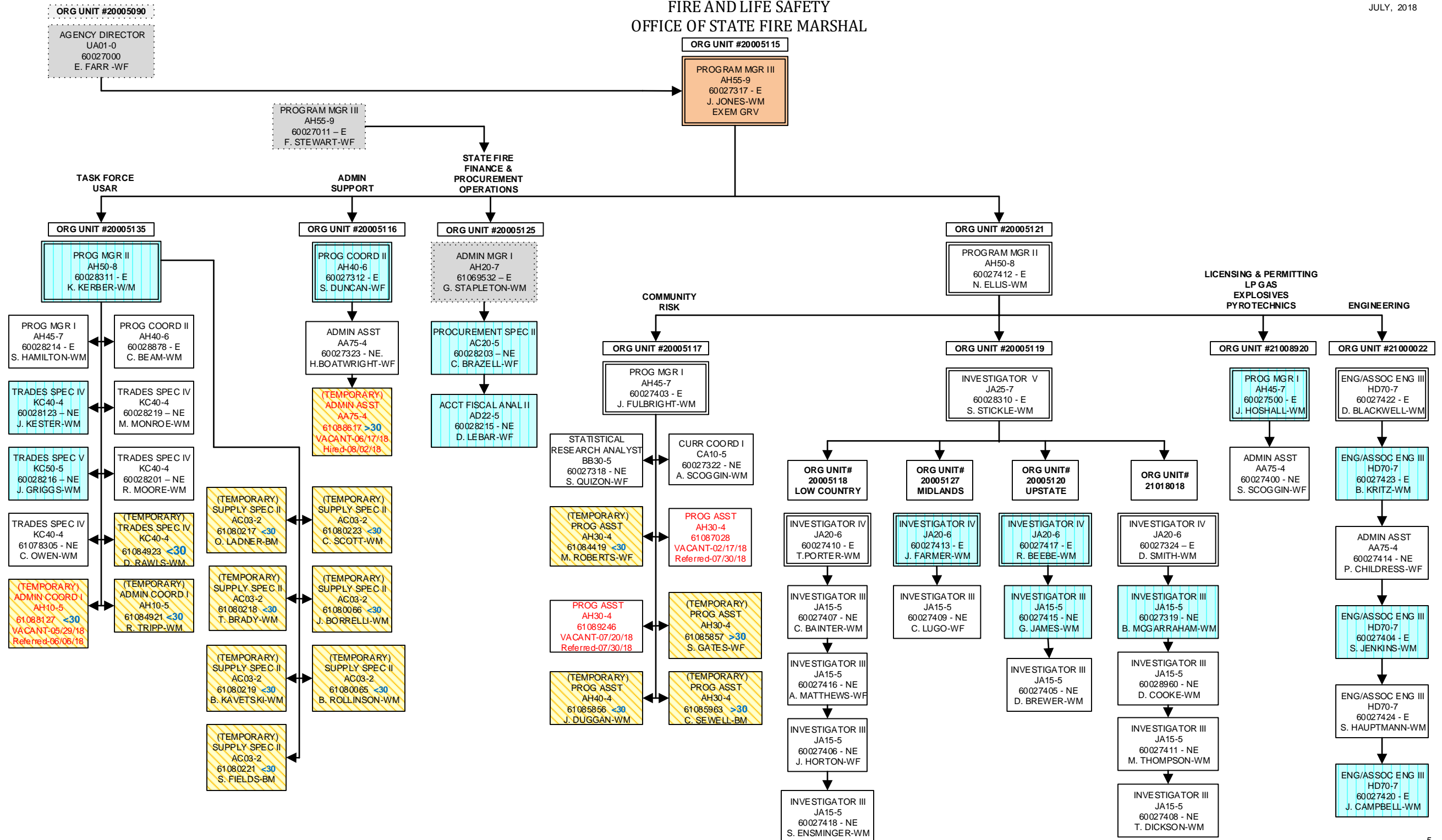
SOUTH CAROLINA
DEPARTMENT OF LABOR, LICENSING AND REGULATION
ORGANIZATIONAL CHARTS

| | | |
|---------------------------|--|--|
| Light Orange Square |  | Employee Exempt from Grievance |
| Light Blue Square |  | Employee returned after TERI or Retirement; Exempt Grv |
| Turquoise Vertical Stripe |  | Employee eligible to retire within 5 years by service or age |
| White Solid Red Letters |  | Vacant Position-Vacancy Date |
| Yellow Diagonal Stripe |  | Temporary Employee |
| Dark Pink Outline |  | Borrowed position |
| NE Designation |  | Non-exempt position |
| E Designation |  | Exempt position |



FIRE AND LIFE SAFETY
OFFICE OF STATE FIRE MARSHAL

JULY, 2018



FIRE AND LIFE SAFETY
FIRE ACADEMY

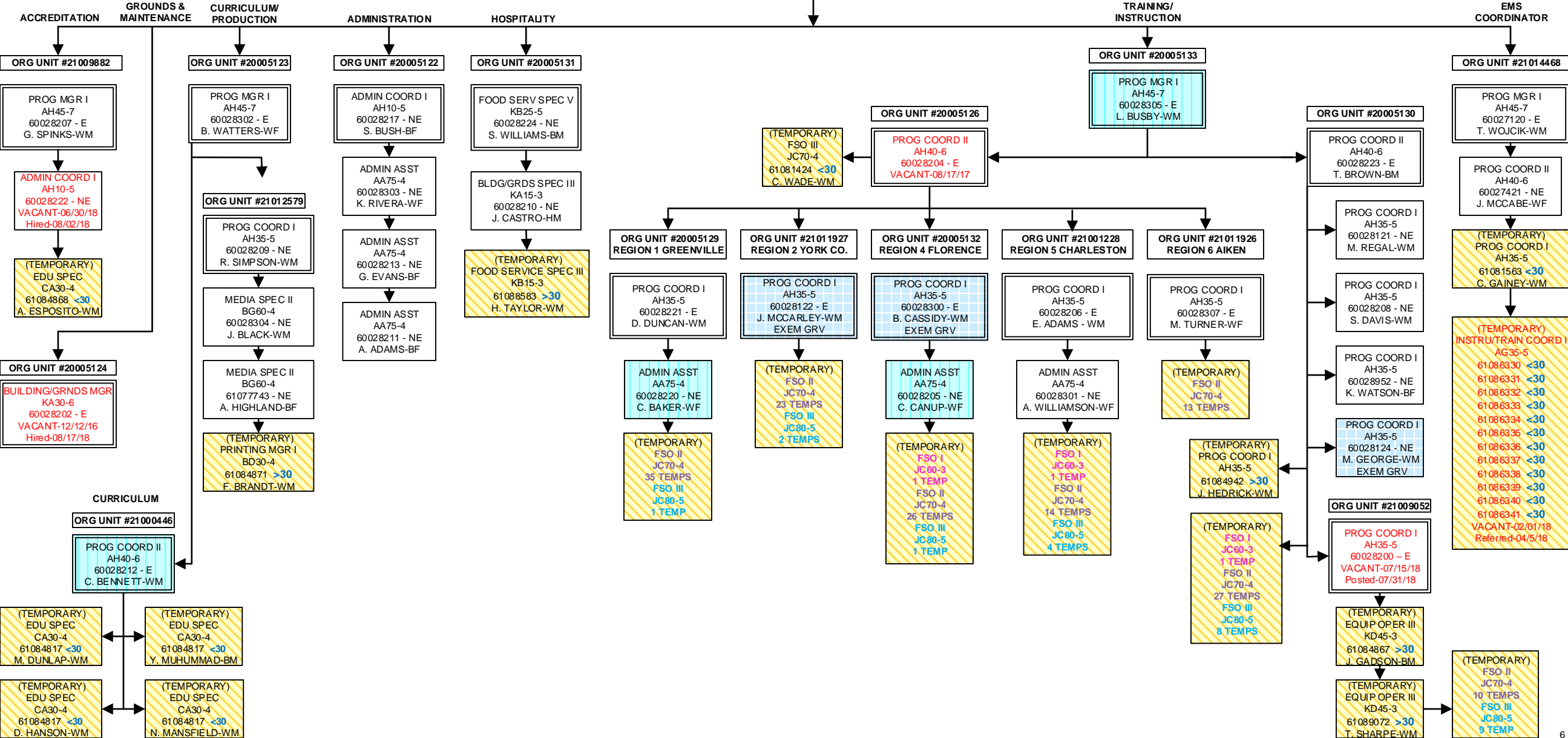
JULY, 2018

ORG UNIT #20005115

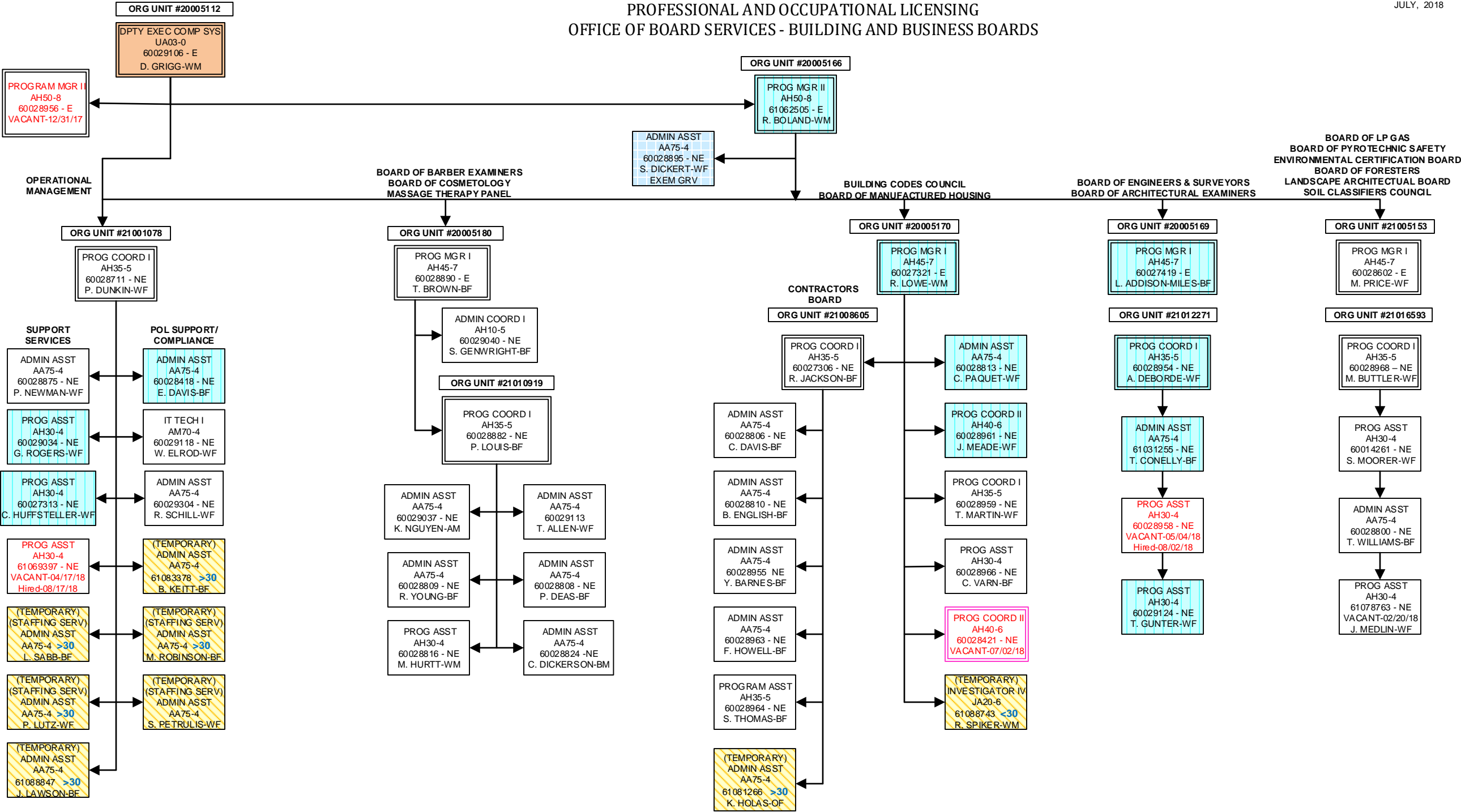
PROGRAM MGR III
AH55-9
60027317 - E
J. JONES-WM

ORG UNIT #20005128

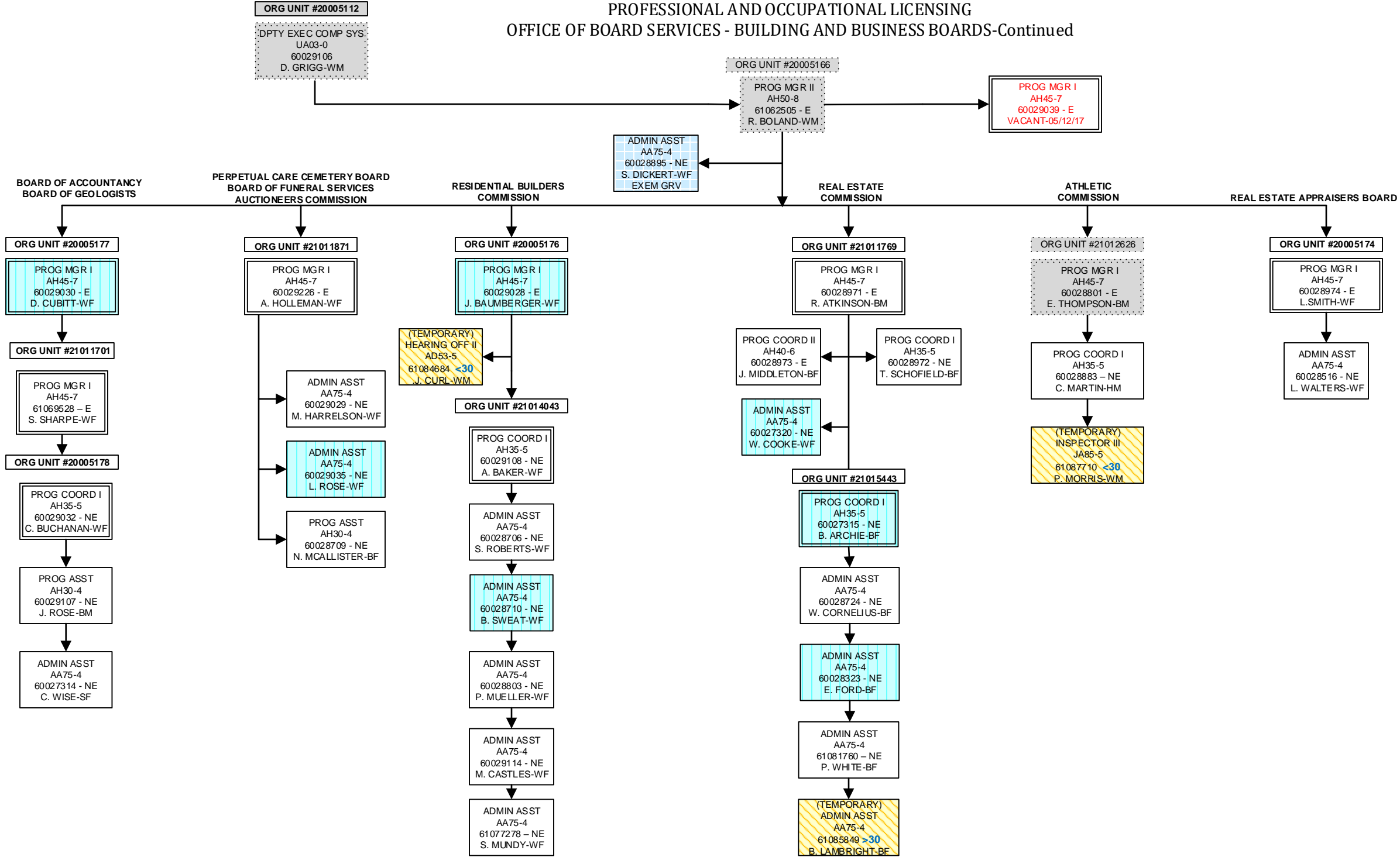
PROG MGR II
AH50-8
60028805 - E
D. RAY-WM



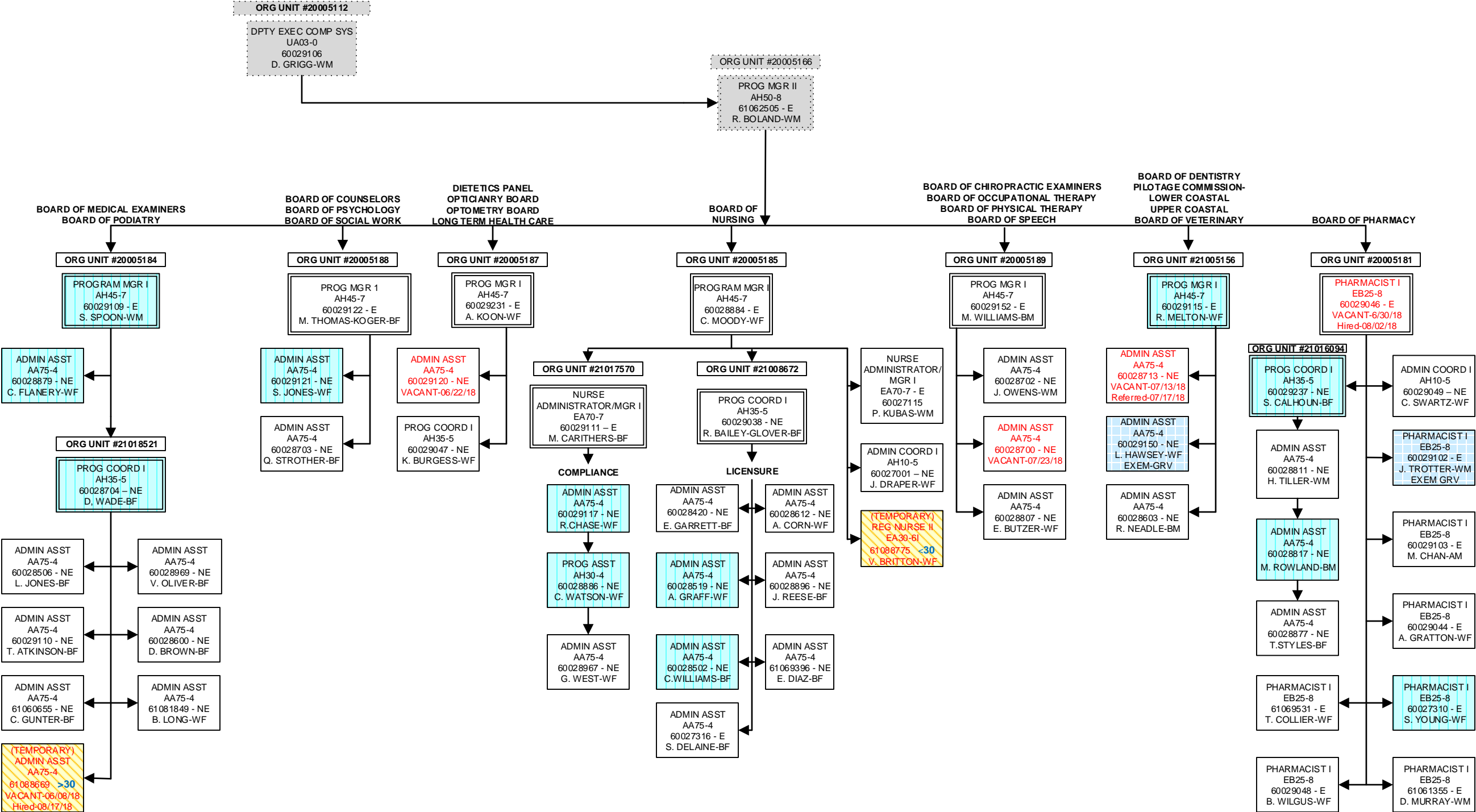
PROFESSIONAL AND OCCUPATIONAL LICENSING
OFFICE OF BOARD SERVICES - BUILDING AND BUSINESS BOARDS



PROFESSIONAL AND OCCUPATIONAL LICENSING
OFFICE OF BOARD SERVICES - BUILDING AND BUSINESS BOARDS-Continued

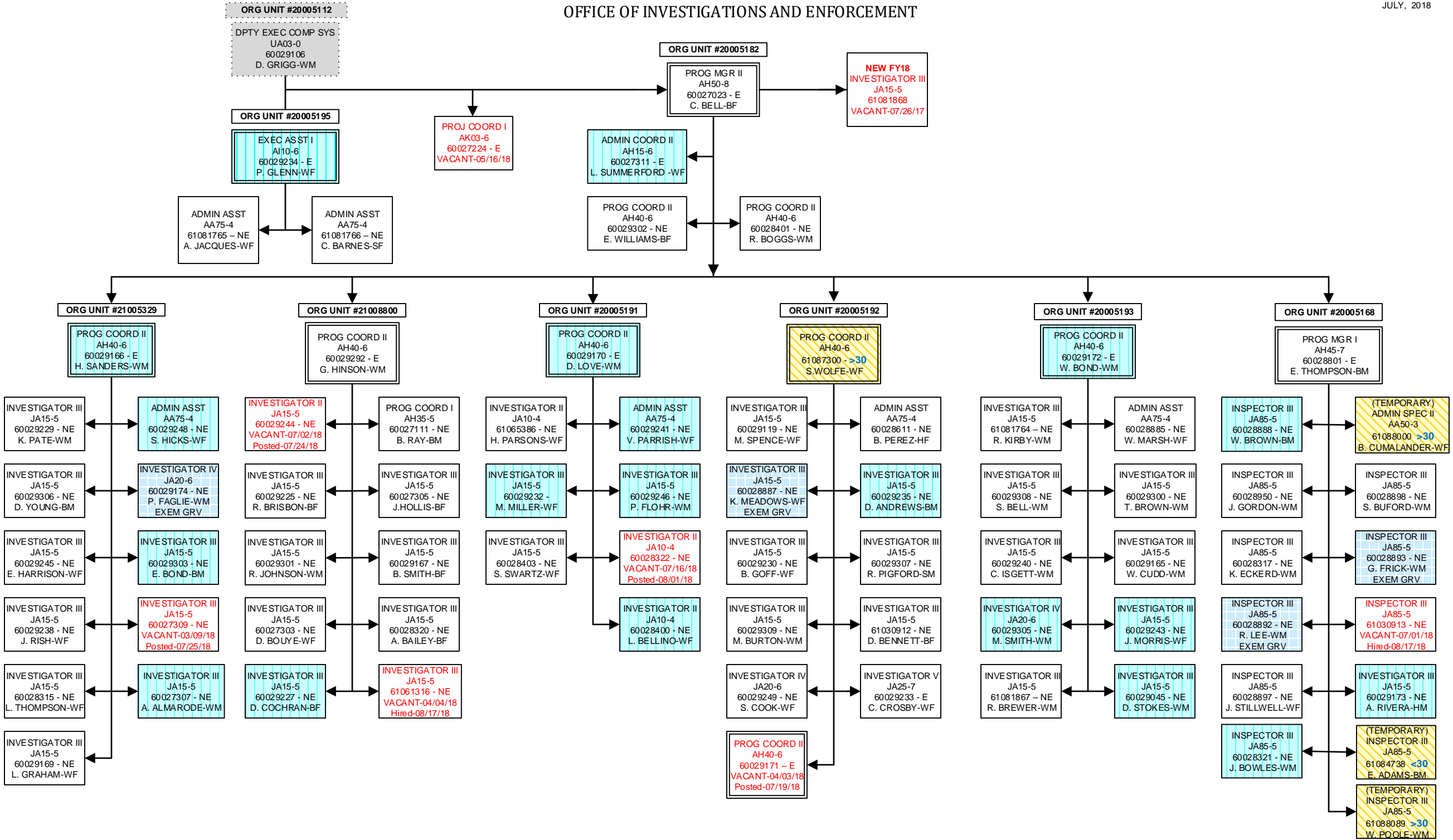


OFFICE OF BOARD SERVICES
HEALTH AND MEDICALLY RELATED BOARDS



OFFICE OF INVESTIGATIONS AND ENFORCEMENT

JULY, 2018



DIVISION OF LABOR
OSHA-COMPLIANCE

JULY, 2018

