



**Cross Island Parkway
Palmetto Pass
South Carolina
Department of Transportation**

**Money Room Equipment Configuration
Manual**

Rev 1.0

May 2008



ACS

Government Solutions, TSS.

Revision History

Revisions of this document are listed in chronological order. There is no relationship between the document release number and the software release number.

| Version Date | Changes Highlighted | Version # |
|---------------------|----------------------------|------------------|
| May 2008 | | 1.0 |
| | | |

Document Ownership

| | |
|---------------|-------------------------------|
| Owner | Germantown Project Management |
| Author | Germantown Project Management |

Important: This document has been through a formal review process. To the best of our knowledge it is accurate. ACS reserves the right to make further modifications as necessary.

Trademarks

All trademarks mentioned herein are the property of their respective holders.

©2008 ACS Transportation Solutions Business Group

Contents

| | | |
|-------|--|----|
| 1. | Money Room Equipment..... | 1 |
| 1.1 | Overview..... | 1 |
| 1.2 | Configuration Procedures..... | 1 |
| 1.2.1 | HP 4240N Printer | 1 |
| 1.2.2 | Currency and Coin Counter..... | 13 |
| 1.2.3 | Installing Java | 17 |
| 1.3 | Configuring the Currency and Coin Counters | 29 |
| 1.3.1 | Currency Counter | 29 |
| 1.3.2 | Coin Counter..... | 29 |

1. Money Room Equipment

1.1 Overview

The following section describes the configuration process for the HP printer and currency and coin counters.

1.2 Configuration Procedures

1.2.1 HP 4240N Printer

1. All of these steps are done at the printer.
1. Assemble the printer, tray compartment, and extra memory. Remove all the orange tapes and follow instructions in the manual, if required.
2. Connect the printer power cord and network cable.
3. Power on the printer using power button on the right side of tray 2.
4. The message Ready on the printer lcd screen indicates that the printer can be configured.
5. Click the Menu button
6. Use the down arrow (▼) button to highlight CONFIGURE DEVICE menu option and click Ok (✓) button. Ok (✓) button is the green button with a tick mark.
7. In the menu list that comes up, use down arrow (▼) button to highlight I/O menu option and click Ok button. In the menu list that comes up, use down arrow (▼) button to highlight EMBEDDED JETDIRECT MENU menu option and click Ok (✓) button.
8. In the menu list that comes up, the first menu item will be TCP/IP. Click Ok (✓) button.
9. In the menu list that comes up, the first menu item will be ENABLE. Click Ok (✓) button.
10. In the menu list that comes up, the first menu item will be ON. Click Ok (✓) button. The message Setting Saved displays and goes back to TCP/IP menu.
11. In the menu list that appears, use down arrow (▼) button to highlight MANUAL SETTINGS menu option and click Ok button.
12. In the menu list that comes up, the first menu item will be IP ADDRESS. Click Ok (✓) button. Use the up arrow (▲) and down arrow (▼) to input the IP address of the printer. Use the Ok (✓) button to move to the next byte in the IP address and once its all done, press Ok (✓) button. The message Setting Saved appears and goes back to MANUAL SETTINGS menu.
13. In the MANUAL SETTINGS menu list that comes up, use down arrow (▼) button to highlight SUBNET MASK menu option and click Ok (✓) button. Use the up arrow (▲) and down arrow (▼) to enter the Subnet Mask of the printer. Use the Ok (✓) button to move to the next byte in the IP address and once its all done, press Ok (✓). The message Setting Saved appears and goes back to MANUAL SETTINGS menu.
14. In the MANUAL SETTINGS menu list that comes up, use down arrow (▼) button to highlight DEFAULT GATEWAY menu option and click the Ok (✓) button. Use the up arrow (▲) and

down arrow (▼) to input the Default Gateway of the printer. Use the Ok (✓) button to move to the next byte in the IP address and once it's all done, press the Ok (✓) button. The message Setting Saved appears and goes back to MANUAL SETTINGS menu.

15. In the MANUAL SETTINGS menu list that comes up, use back arrow (↶) button to go back to the TCP/IP menu with MANUAL SETTINGS highlighted. Use down arrow (▼) button to highlight PRIMARY DNS menu option and click Ok (✓) button. Use the up arrow (▲) and down arrow (▼) to input the Primary DNS of the printer. Use the Ok (✓) button to move to the next byte in the IP address and once it's all done, press the Ok (✓) button. The message Setting Saved appears and goes back to TCP/IP menu.
16. In the TCP/IP menu list that comes up, use the down arrow button to highlight SECONDARY DNS menu option and click Ok button. Use the up arrow (▲) and down arrow (▼) to input the Secondary DNS of the printer. Use the Ok (✓) button to move to the next byte in the IP address and once it's all done, press the Ok (✓) button. The message Setting Saved appears and goes back to TCP/IP menu.
17. Use back arrow (↶) button to go back to the EMBEDDED JETDIRECT MENU menu.
18. Use back arrow (↶) button to go back to the I/O menu.
19. Use back arrow (↶) button to go back to the CONFIGURE DEVICE menu.
20. Use back arrow (↶) button to go back to the MENUS menu.
21. Use back arrow (↶) button to go back to the screen that shows Ready.
22. Turn the printer off using power button on the right side of tray 2.
23. Turn the printer on using power button on the right side of tray 2.
24. To verify configuration - Click Menu button > Information > Print Configuration. A two page configuration gets printed. In the first page, under TCP/IP, verify if the values show up correct for IP Address, Subnet Mask, Default Gateway, Primary DNS Server, and Secondary DNS Server.

1.2.1.1 Installing Printer to Money Room Computer

1. Insert into the computer the installation CD provided by Hewlett Packard and the system CD provided by ACS.
2. Click the **Set Up** icon from the appropriate drive.

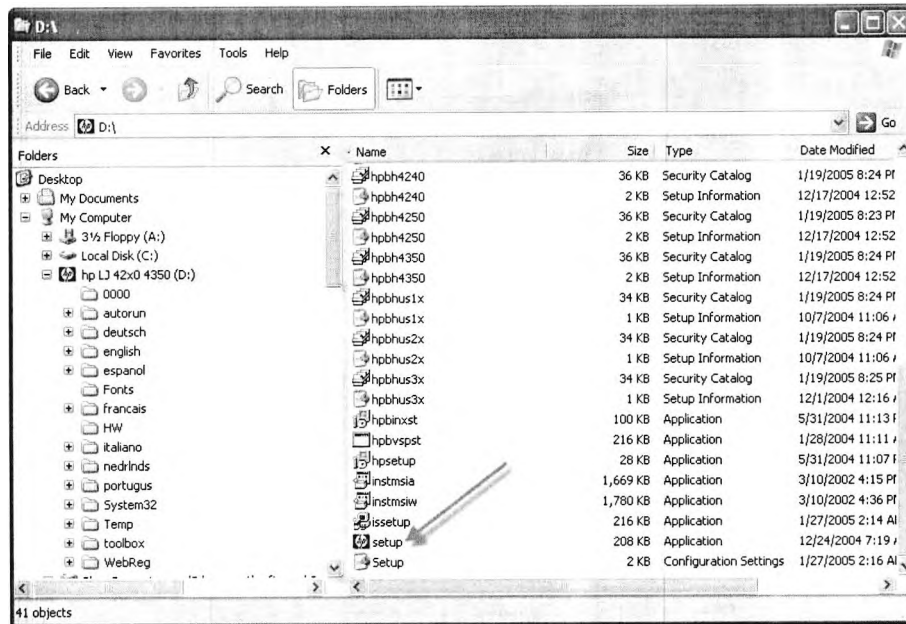


Figure 1-1: Set Up Icon

3. Once the installation process starts, click **Install Printer**.

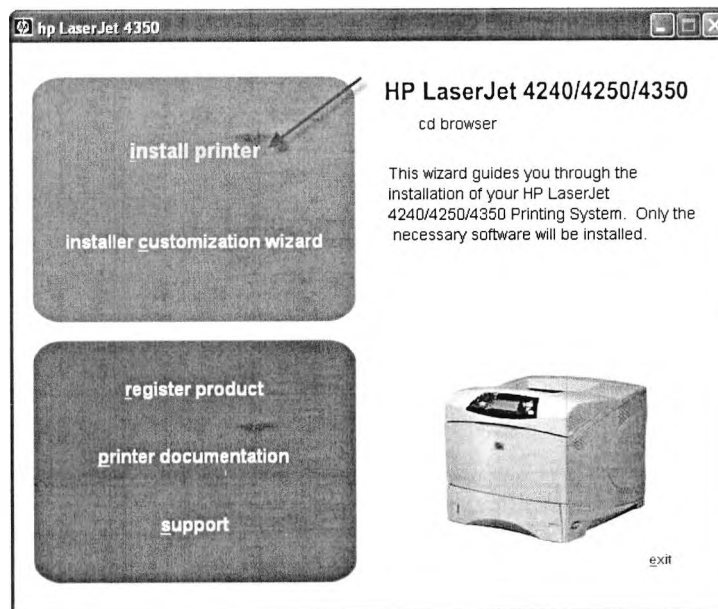


Figure 1-2: HP Installation Process

4. Set the language.

5. Click **Next** to accept the terms of the software agreement.

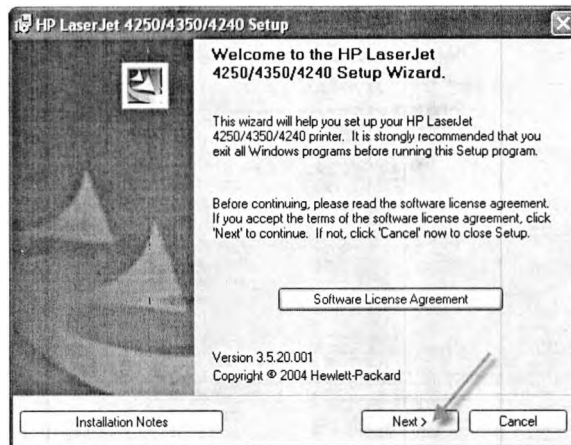


Figure 1-3: Software Agreement

6. Select **Connected via the network** and click **Next**.

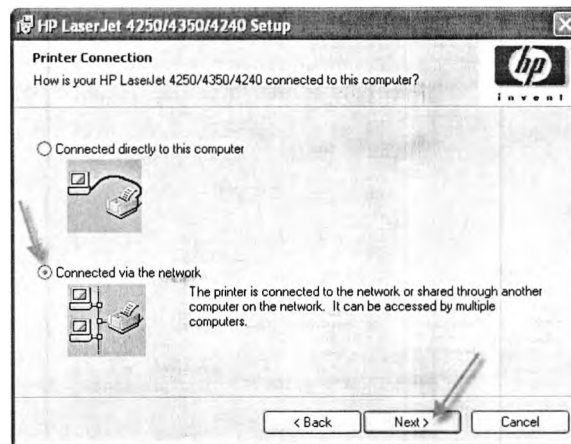


Figure 1-4: Printer Connection

7. Select **Basic Network Setup for PC or server (recommended)** and click **Next**.

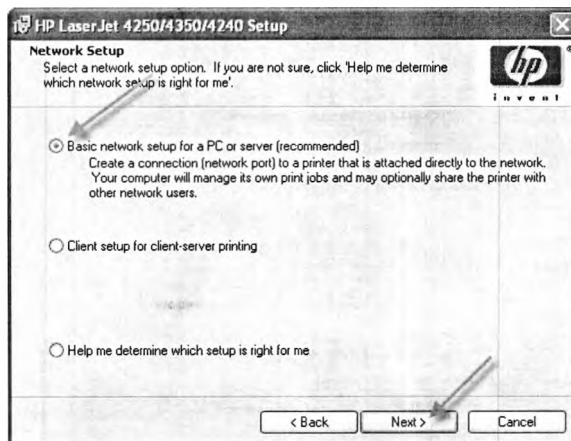


Figure 1-5: Network Setup

8. Select **Specify a printer by address** and click **Next**.

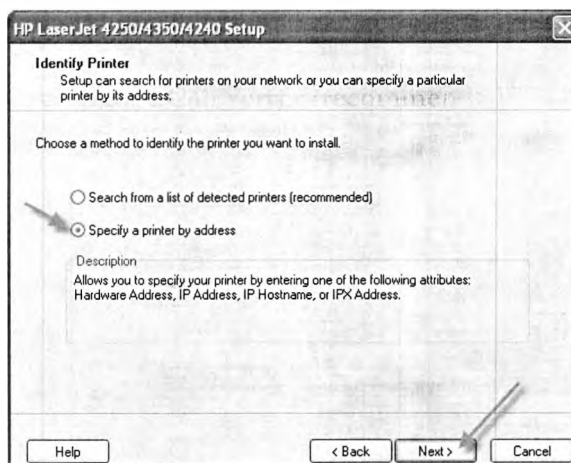


Figure 1-6: Identify Printer

9. Select **Specify by IP address** and click **Next**.

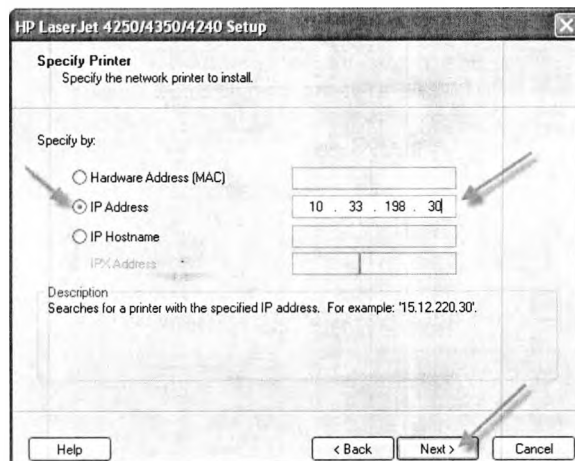


Figure 1-7: Specify Printer

10. Select **Yes, install this printer** and click **Next**.

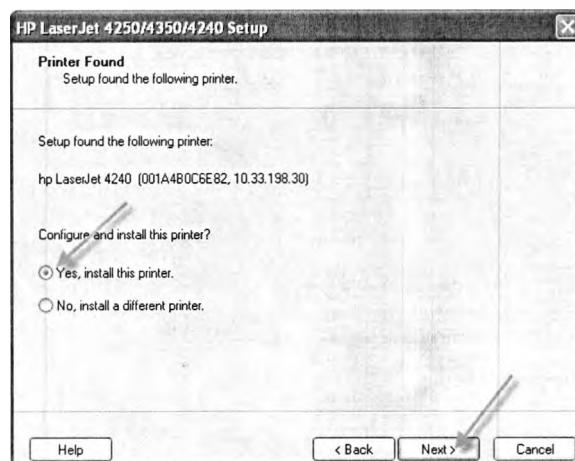


Figure 1-8: Printer Found

11. Click **Next** once settings are confirmed.

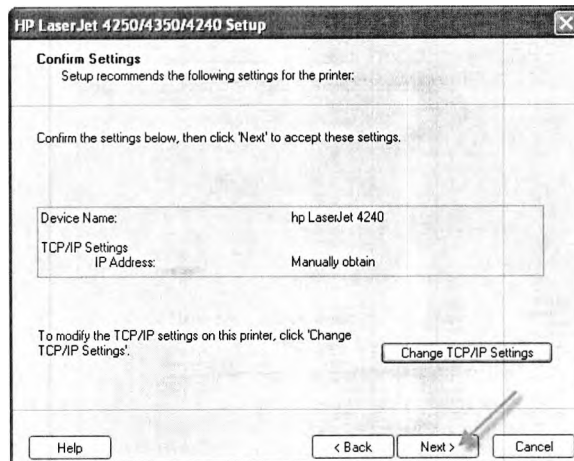


Figure 1-9: Confirm Settings

12. Select **Custom Installation** and click **Next**.

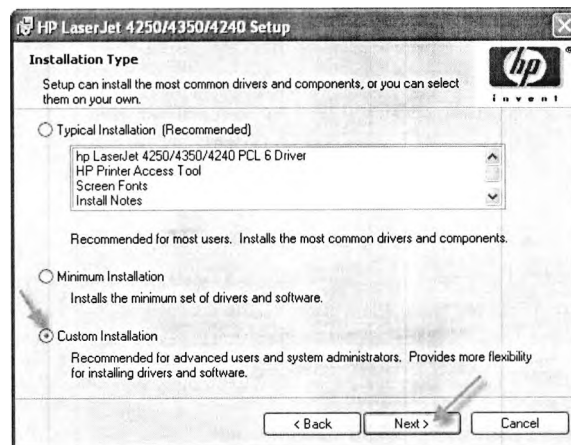


Figure 1-10: Installation Type

13. Select **This feature will not be available** and click **Next**.

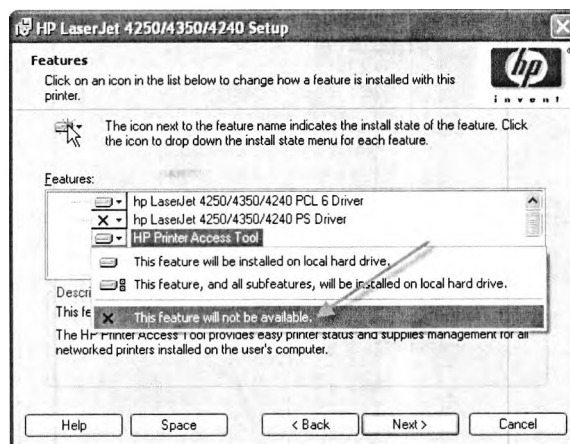


Figure 1-11: Features Not Available

14. Specify the printer name **hp Laserjet 4250/4350/4240 PCL 6 Driver** and click **Next**.

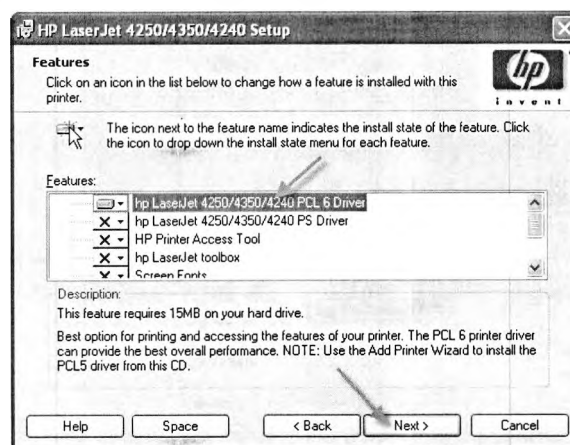


Figure 1-12: Changing Installation of Features

15. Complete **Printer Name** as **HP LaserJet 4240 PCL**. Check the **Default Printer** box and click **Next**.

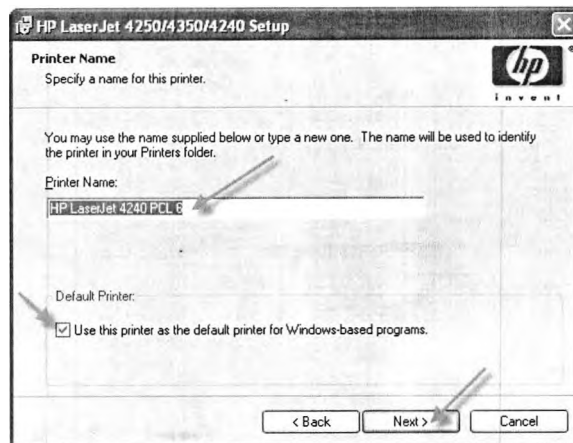


Figure 1-13: Printer Name

16. Select **Not Shared** and click **Next**.

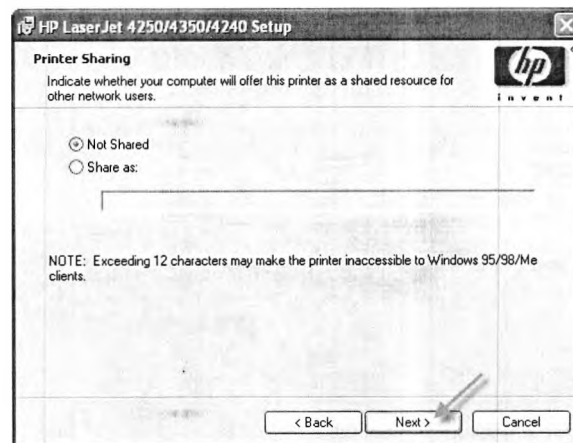


Figure 1-14: Printer Sharing

17. Click **Next**.

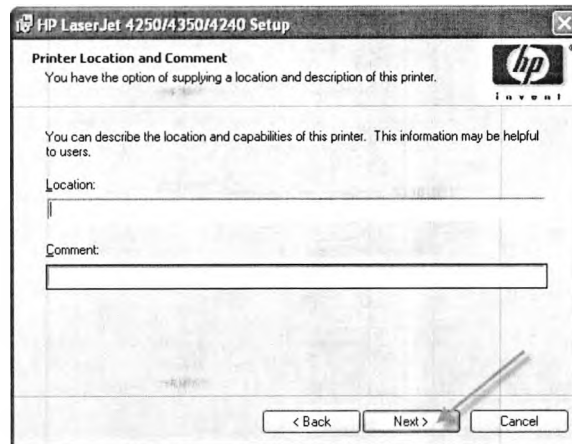


Figure 1-15: Printer Location and Comment

18. Begin Installation Wizard by clicking **Install**.

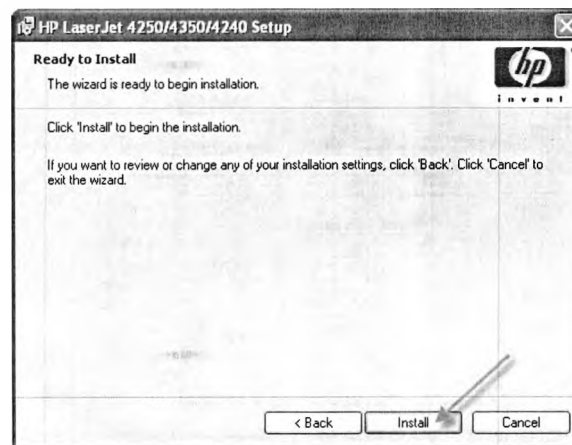


Figure 1-16: Ready to Install

19. The wizard will begin installing the printer.

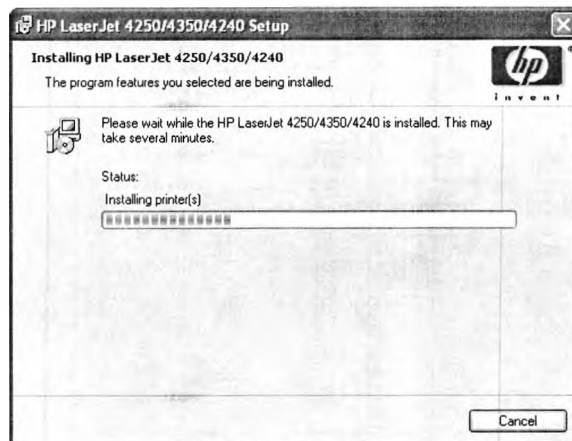


Figure 1-17: Installing Printer

20. When the installation process is complete, click **Finish**.

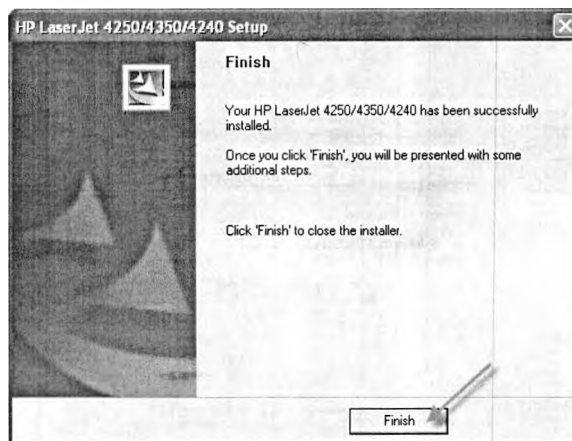


Figure 1-18: Finish

21. Locate Printers and Faxes directory on C drive. Select **HP LaserJet 4240 PCL 6**.



Figure 1-19: Locating Printer

22. Right click on **HP LaserJet 4240 PCL 6** to display the properties menu.

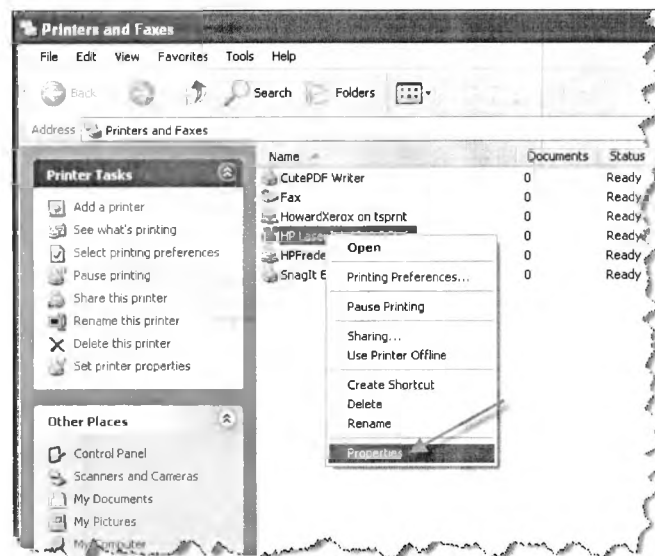


Figure 1-20: Printer Properties

23. Click **Print Test Page**. A window displays indicating that a test page has been printed. If the test page printed, click **OK**. If not, click **Troubleshoot**.



Figure 1-21: Printer Test Page

24. A confirmation page is sent to the printer when the installation is successfully completed.

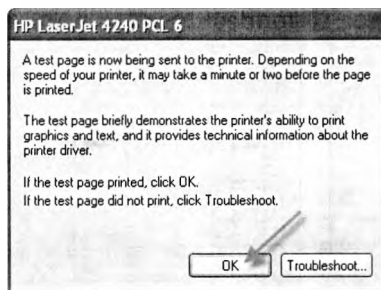


Figure 1-22: Printer Test Page Confirmation

1.2.2 Currency and Coin Counter

Before beginning the configuration process, have adequate cabling and the required equipment components—installation compact disc (CD) and working personal computer (PC).

1. Remove the hard cover from the PC and install the MIPort card into the personal computer interface (PCI) slot available in the PC. Replace the PC cover.

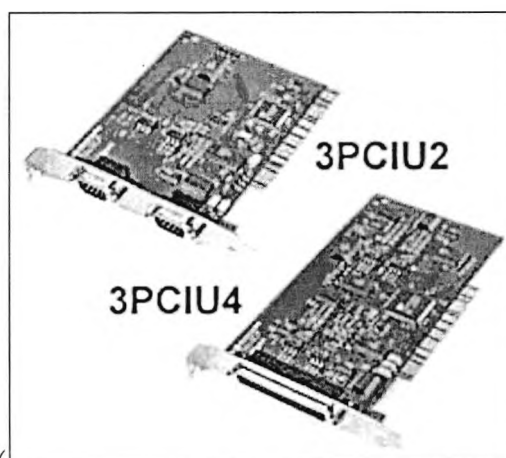


Figure 1-23: MIPort Card

2. Attach the communication extension cables from the PC to the equipment.
3. Turn on the PC. The PC will recognize the addition of new hardware to the system and display the following screen:



Figure 1-24: Hardware Recognition Screen

4. Put the CD that comes with the MIPort card into the computer's CD drive.
5. Select **Install from a list or specific location (Advanced)**. Click **Next**.

6. Select **Search for the best driver in these locations** and check the **Search removable media** (floppy, CD-ROM...). Click **Next**.

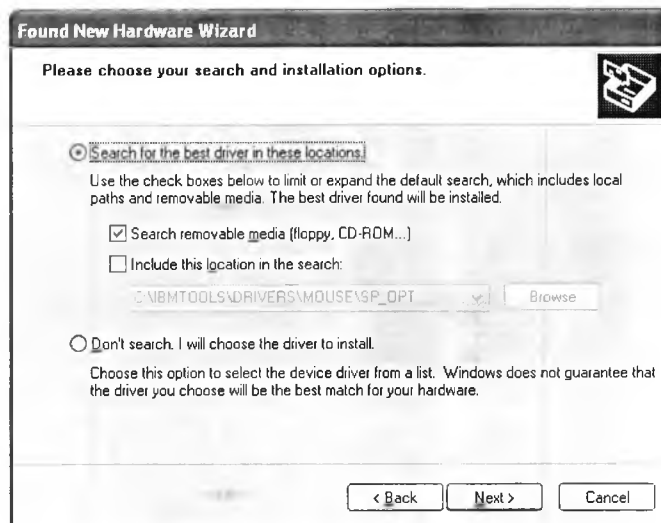


Figure 1-25: Search for Drivers

7. Select **Continue Anyway**.

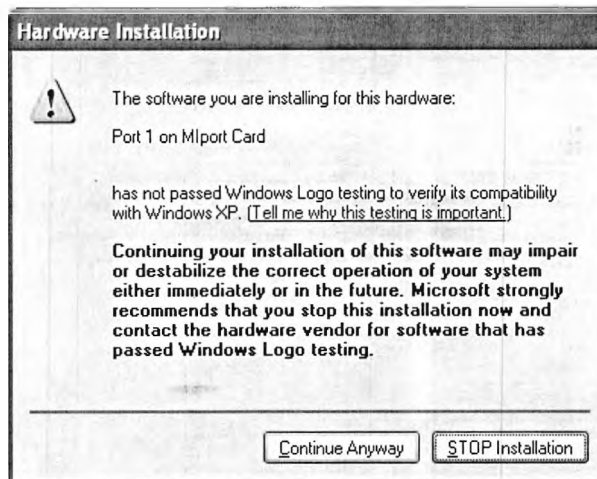


Figure 1-26: Windows Logo Testing

8. When finished installing the new software, the Hardware Wizard displays.

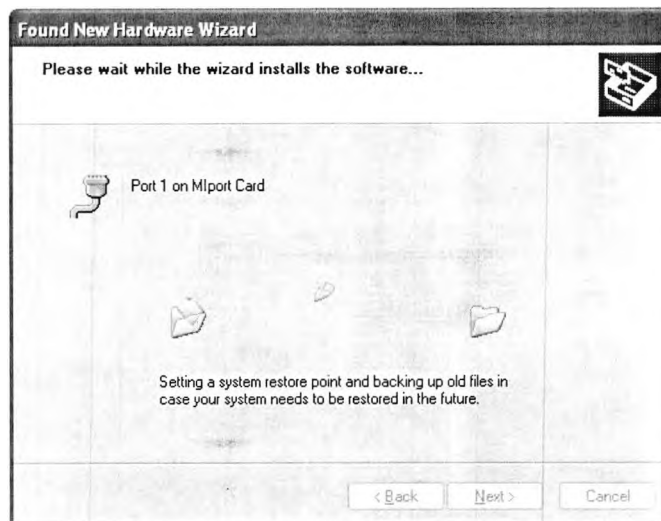


Figure 1-27: Hardware Wizard

9. Click **Finish** to complete the software installation process.



Figure 1-28: Completing New Hardware Wizard

Note: The same process must be completed for all ports. Repeat the previous steps until all ports have the installed software.

1.2.3 Installing Java

Java must be installed before the money room functions will run. To install Java, follow these steps.

1. Use the CD provided by ACS containing Java Runtime Environment (JRE) and VECTOR hardware jars. Click on the file `jre-1_5_0_13-windows-i586-p.exe` from the CD. Install it under the directory `C:\Program Files\Java`, if prompted. This is the default directory.

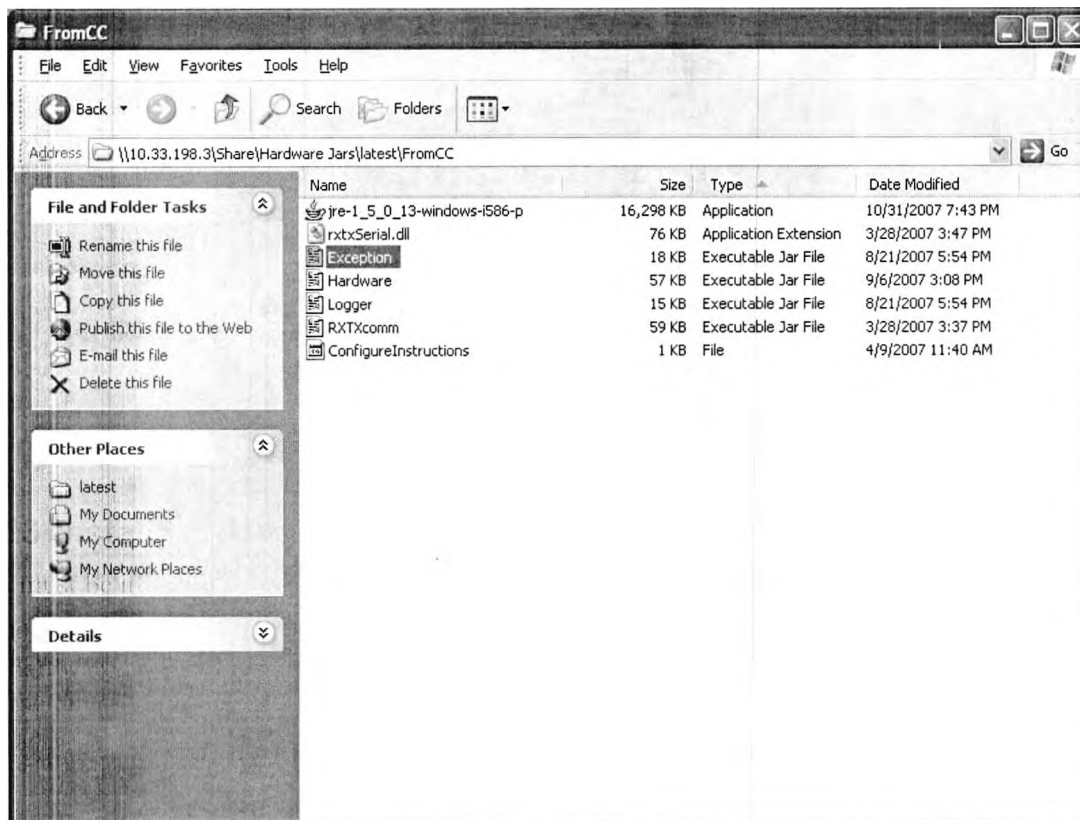


Figure 1-29: Java Installation File Directory

2. Click Run.

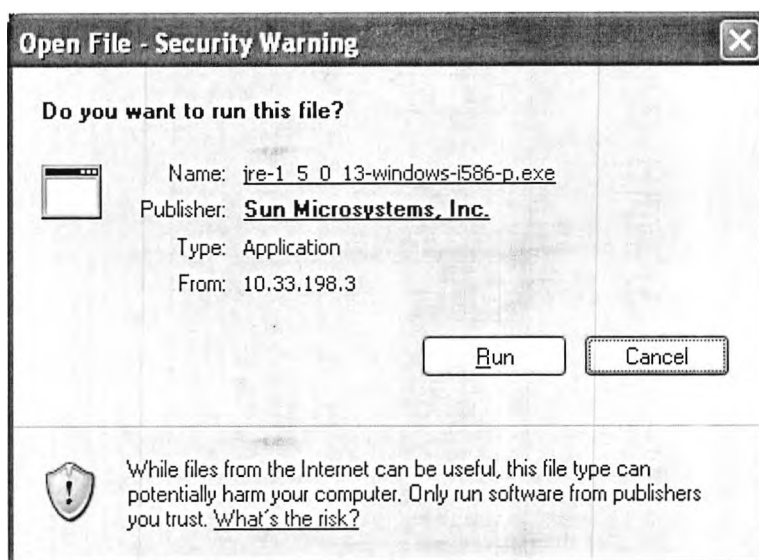


Figure 1-30: Security Warning

3. Select Typical setup—All recommended features will be installed. Click Accept.

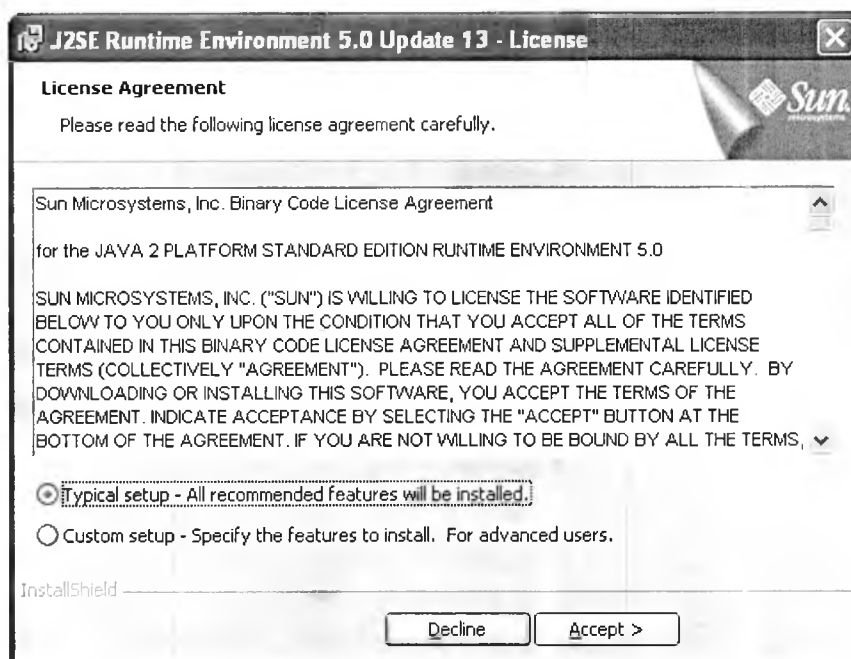


Figure 1-31: License Agreement

4. When the file is finished installing, the following screen displays.

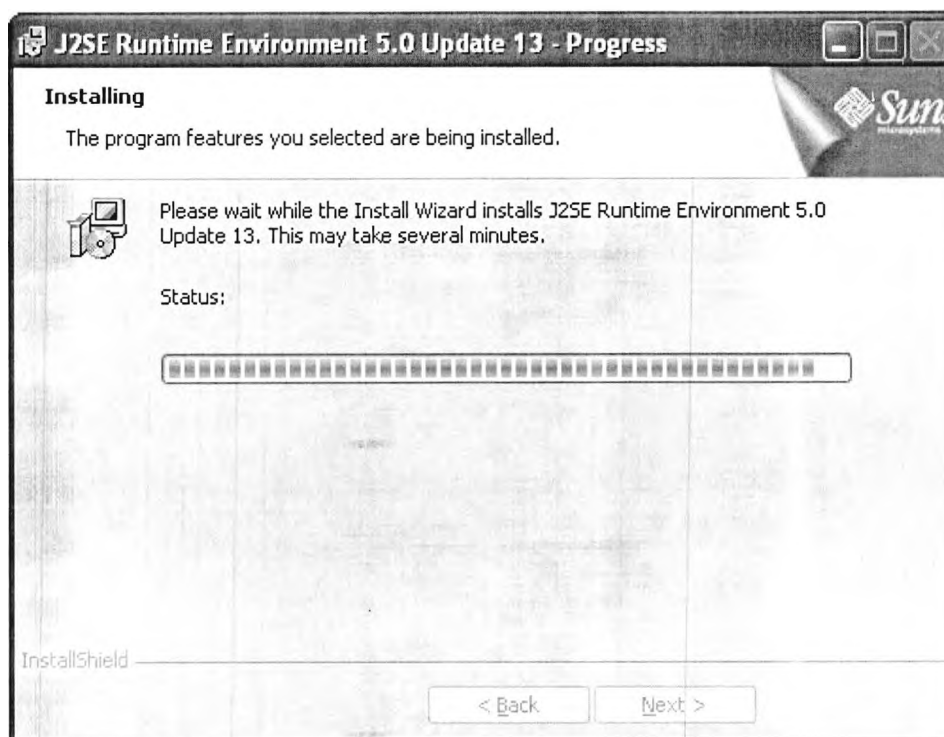


Figure 1-32: J2SE Runtime Environment

5. Click Finish.



Figure 1-33: Java Installation Complete

6. Copy VECTOR hardware jars.



Figure 1-34: Hardware Jar Copy

7. Copy the following Jar files C:\Program Files\Java\jre1.5.0_13\lib\ext from the ACS CD to the lib ext folder.
 - a. Hardware.jar
 - b. Exception.jar
 - c. Logger.jar
 - d. RXTXcomm.jar

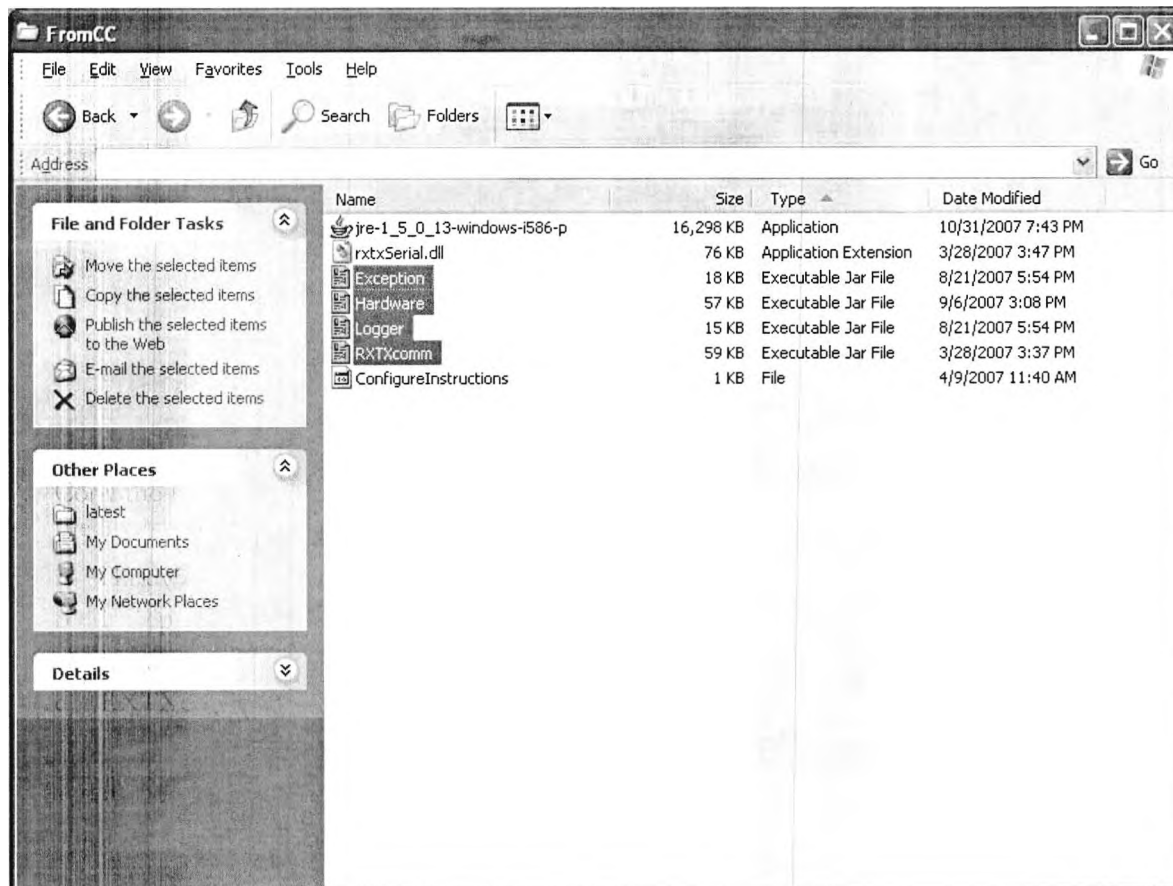


Figure 1-35: Jar File Copy

8. Copy the rtxSerial.dll from the CD to the bin directory: C:\Program Files\Java\jre1.5.0_13\bin.

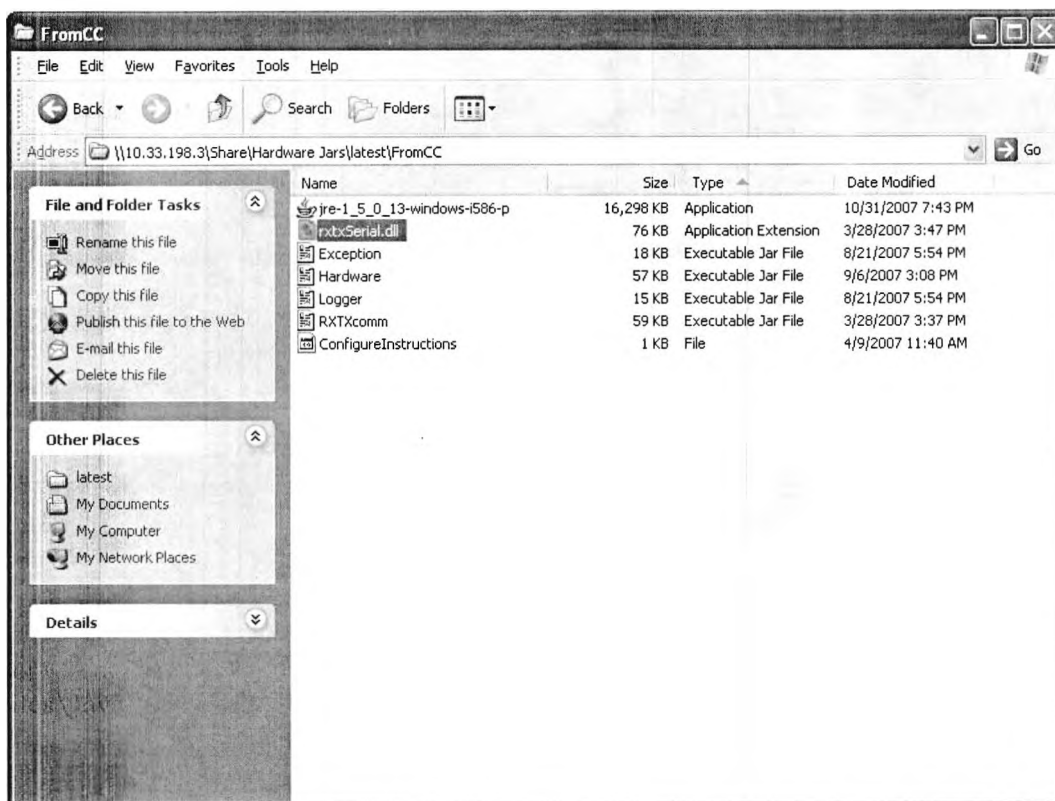


Figure 1-36: rtxSerial.dll File Location

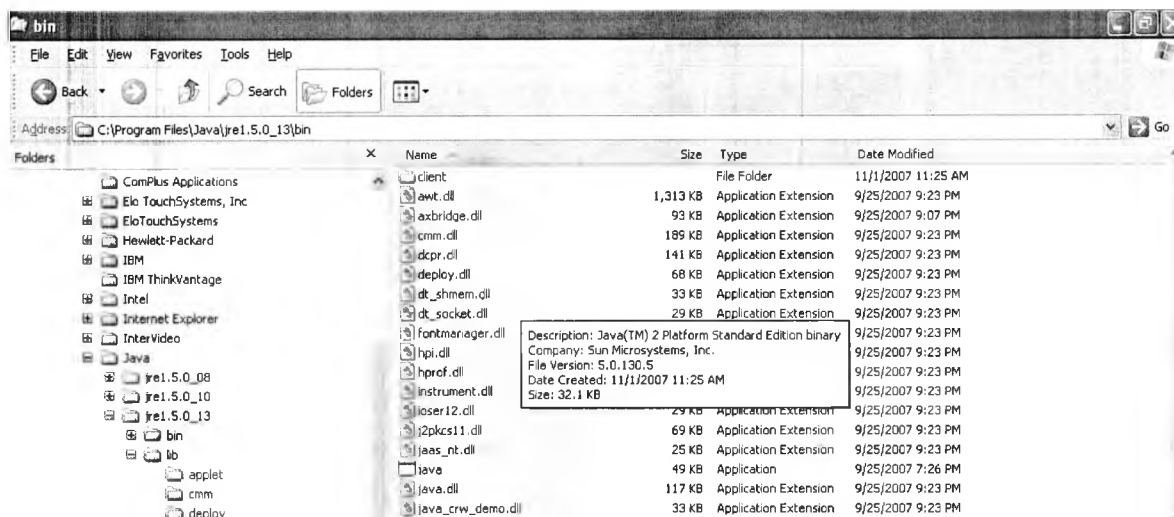
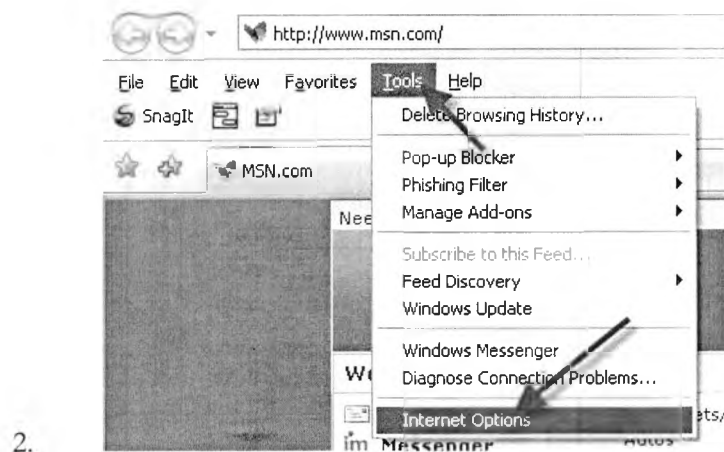


Figure 1-37: C:\Program Files\Java\jre1.5.0_13\bin

9. Open an Internet explorer browser..
10. Click Tools and select Internet Options.



2.

11. Select the Java version in the IE browser window. Only check **JRE 1.5.0_13**.

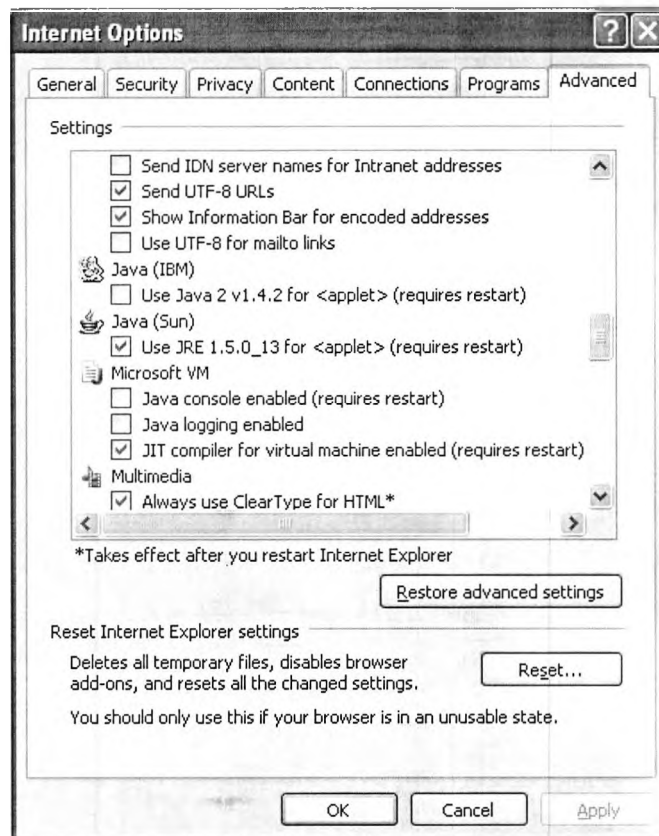


Figure 1-38: Java Internet Options

12. Verify the installed COM ports through the Control Panel.

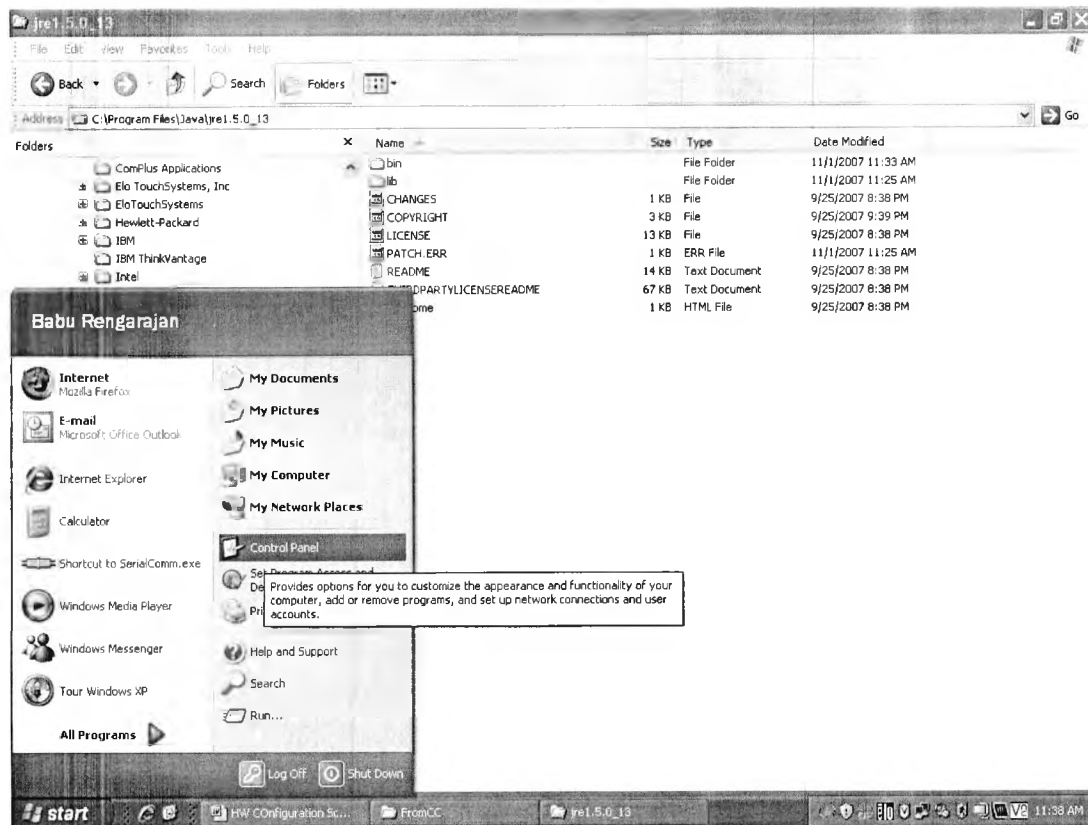


Figure 1-39: COM Ports Verification

13. Click System.

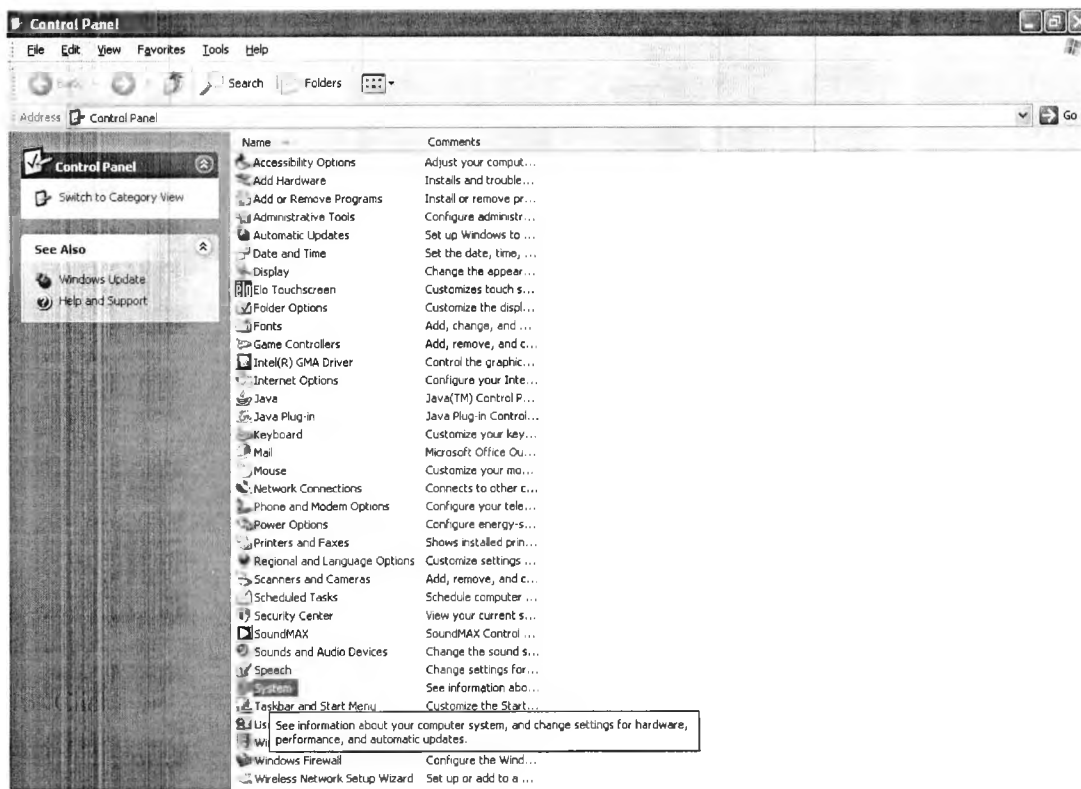


Figure 1-40: Ports Verification through System File

14. Select **Hardware** tab.

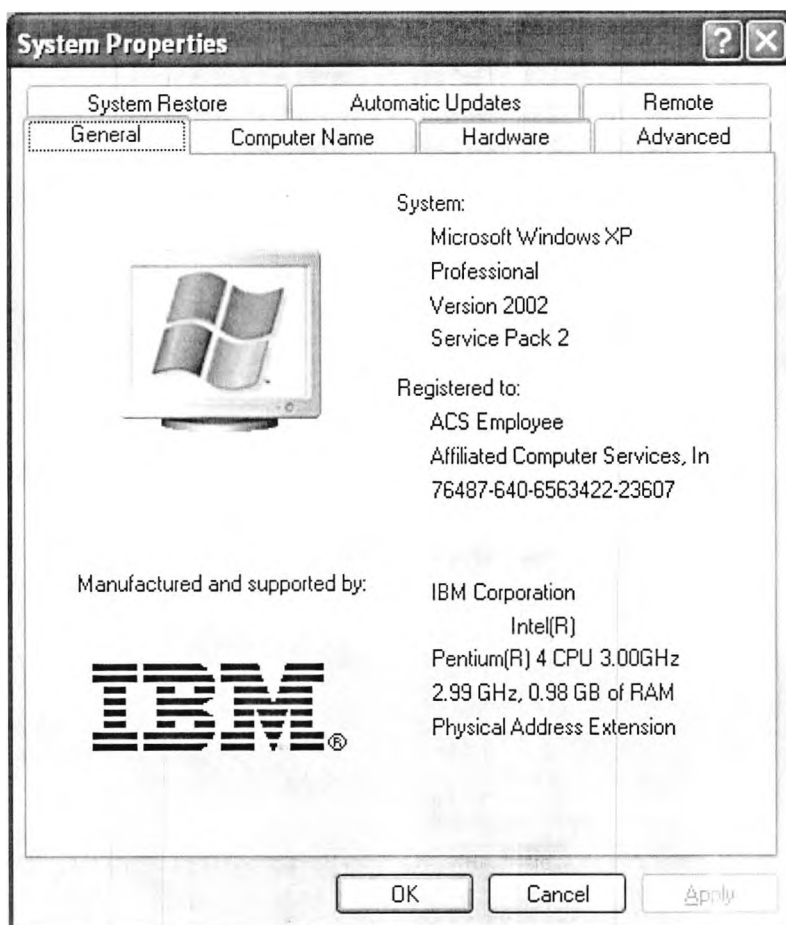


Figure 1-41: Java System Properties

15. Click **Device Manager**.

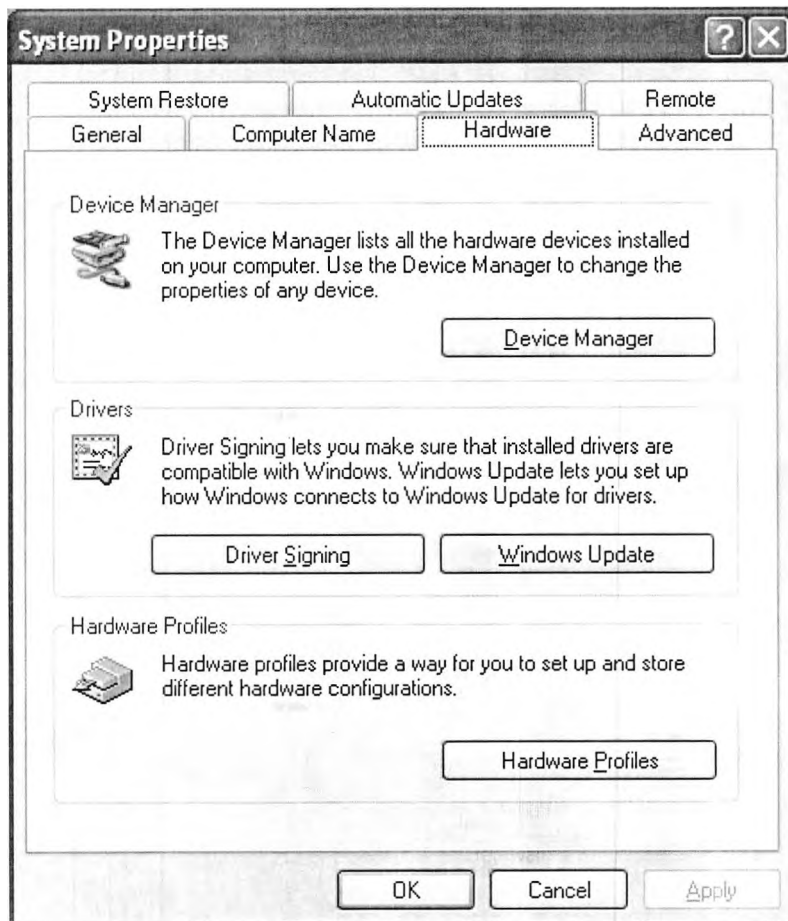


Figure 1-42: Hardware Device Manager

16. Click **I8215LPKNLB1**. Eight additional ports will be visible (Port 1 on MIPort Card to Port 4 on MIPort Card).

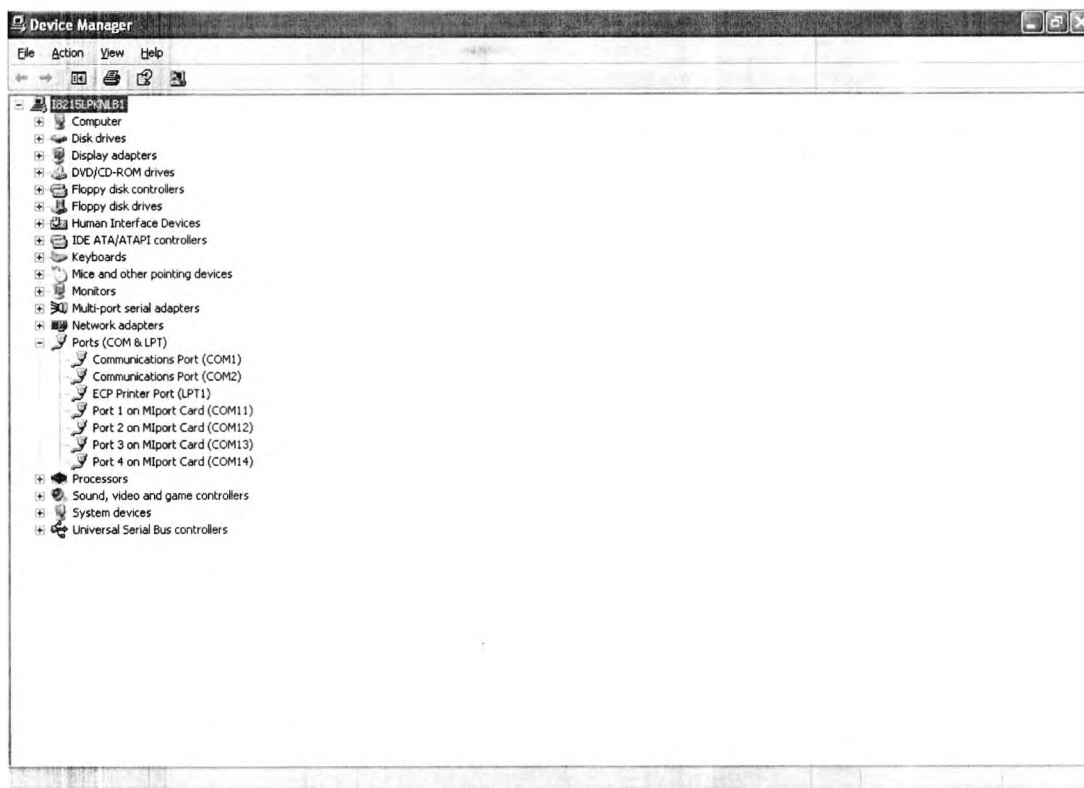


Figure 1-43: Available Ports

1.3 Configuring the Currency and Coin Counters

1.3.1 Currency Counter

3. All of these steps are done on the currency counter.
4. Click the **End Bat** button.
5. Click **Alt Strap** (User Set Up) button.
6. Click the **Cont** button. **Default type is the user.
7. Click the **Alt Strap** (Sub batch status on) button.
8. Click **Alt Strap** (Mode status count on) button.
9. Set **strap**.
10. Click the **Cont** button.
11. Click the **Cont** button.
12. Click **Alt Strap** (Key status unit on) button.
13. Click **Alt Strap** (Denom keys usage) button.
14. Click **Cont**.
15. Set **strap**.
16. Click **Cont**.
17. The following will display:
 - a. Port 1 Status
 - b. CRM 9600 7 ODD
 - c. Port 2 status
 - d. Off 1200 7 Non
 - e. On
 - f. Straps Clear
 - g. Manual
18. Click **Cont** (stranger record off) button.
19. Save **Mode**.
20. Click **Cont** button.

1.3.2 Coin Counter

21. All of these steps are done on the coin counter.
1. Connect all the cables to the correct ports as shown in Figure 1-44. COM ports 1-4 are cabled to the PC. Port 3: Bill Counter. Port 4: Coin Counter.
2. Turn power on by clicking the **Motor On/Off** button.
3. Power off and then turn the key to unlock the machine.

4. Click **Select** and power the counter on again. The first mode will be programming mode.
5. Set **Time**.
6. Click **Home**.
7. Click **Select** to get to the second icon.
8. The following will be displayed:
 - a. Display use= .
 - b. Bag stops= enable
 - c. Bag stops use= value
 - d. seconds auto stop= enable
 - e. Print unit count= disable
9. Click **Home**. Skip to the next icon.
10. Configure bags. Coin values will change as bags are configured.
11. Click **Home**.
12. No bill option
13. No print option.
14. Click **Home**. RS232 displays. Port 1 Baud 9600 Parity None Data bits 8 Format Enhan
15. Click **Next Page**. Port 1 ack/nak disable dtr/dsr enable rts/cts enable
16. Click **Home**.
17. Turn key to lock settings.

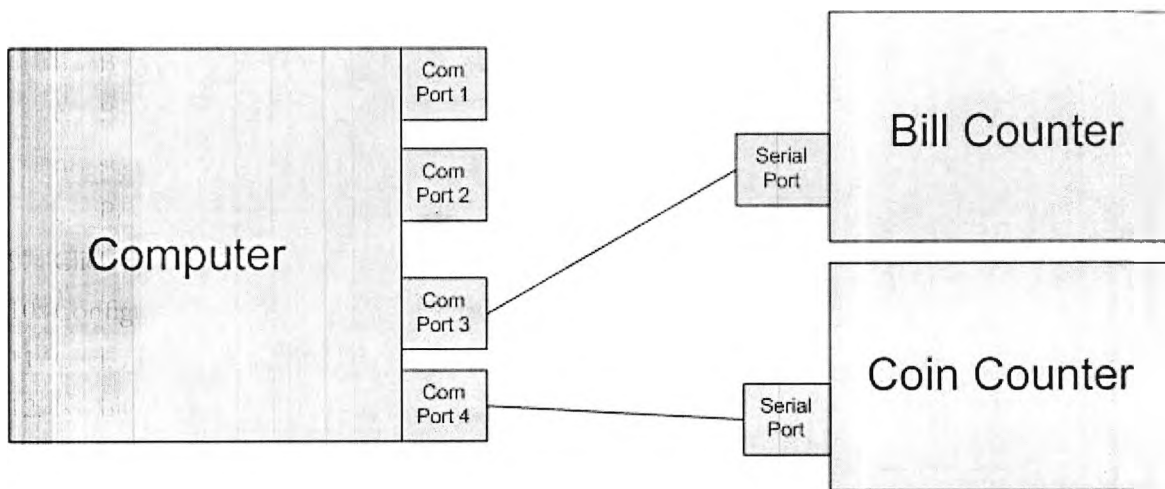


Figure 1-44: Cable Connections for Bill and Coin Counters