
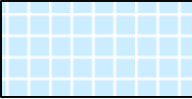
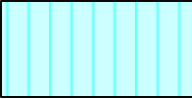






SOUTH CAROLINA  
DEPARTMENT OF LABOR, LICENSING AND REGULATION  
ORGANIZATIONAL CHART

JUNE 30, 2016

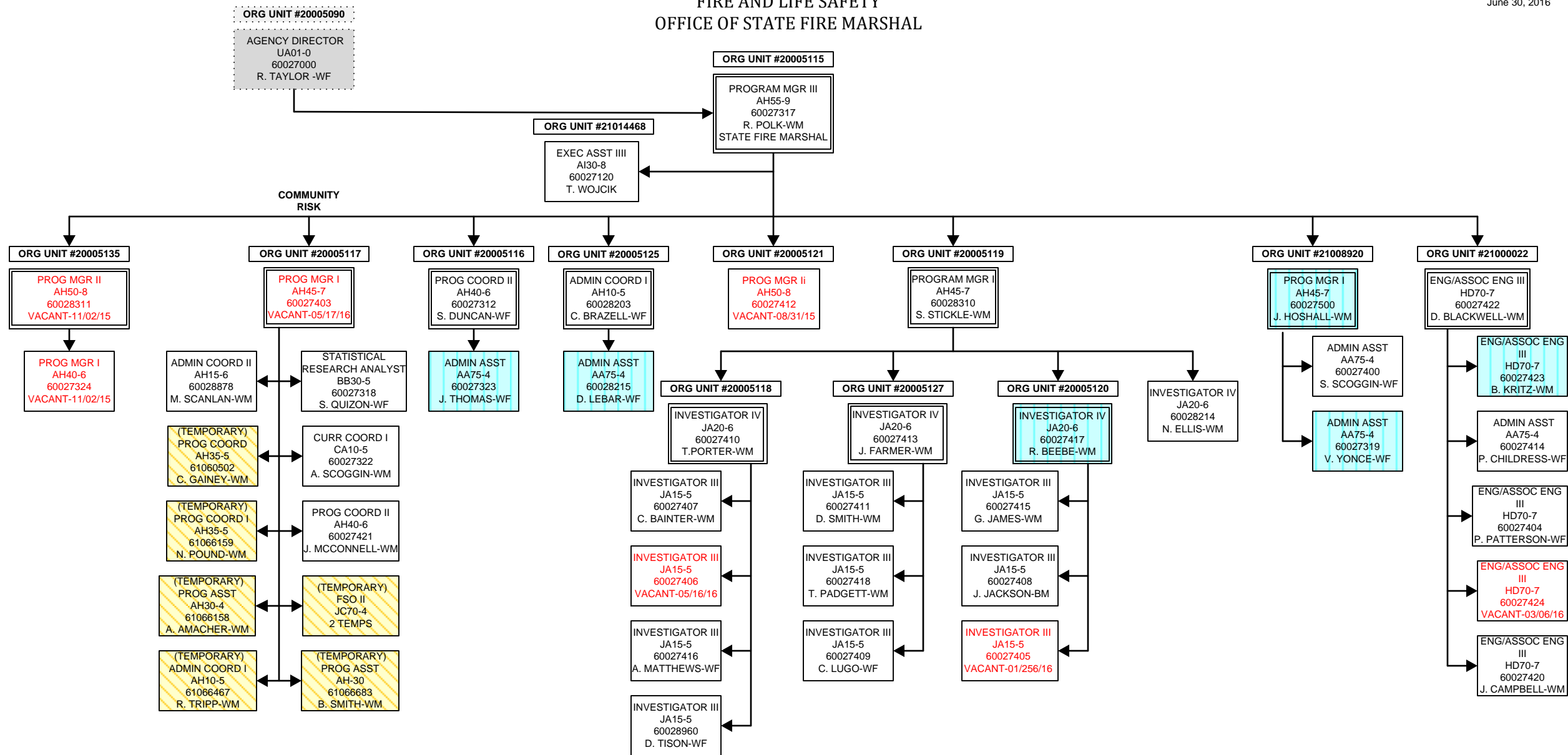
**SOUTH CAROLINA  
DEPARTMENT OF LABOR, LICENSING AND REGULATION  
ORGANIZATIONAL CHARTS**

Pink Diamond		<b>TERI Employee</b>
Light Blue Square		<b>Employee returned after TERI or Retirement</b>
Turquoise Vertical Stripe		<b>Employee eligible to retire within 5 years by service or age</b>
White Solid Red Letters		<b>Vacant Position-Vacancy Date</b>
Yellow Diagonal Stripe		<b>Temporary Employee</b>
Grayed out		<b>Previously counted position</b>
Dark Pink Outline		<b>Borrowed position</b>



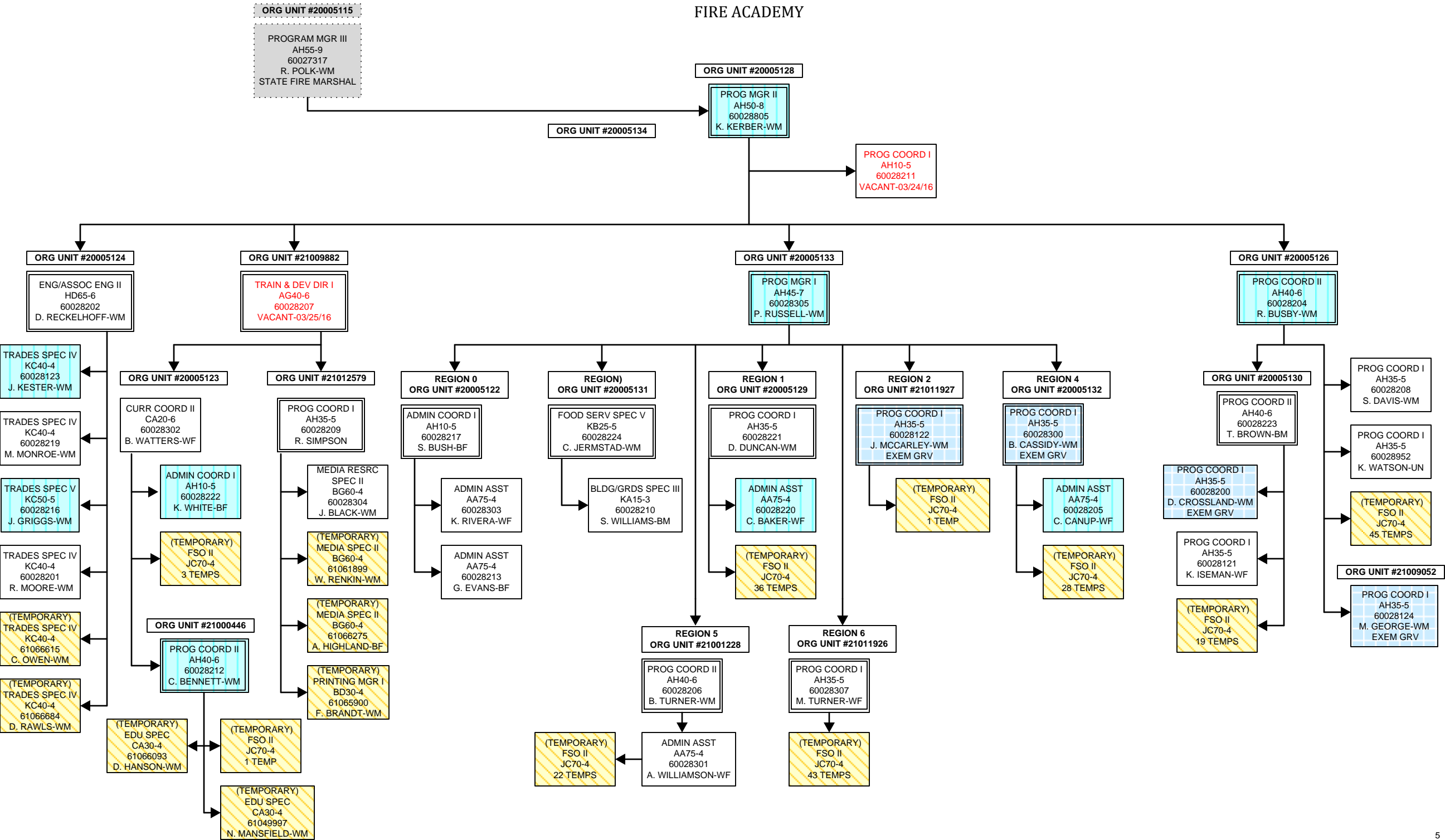
FIRE AND LIFE SAFETY  
OFFICE OF STATE FIRE MARSHAL

June 30, 2016

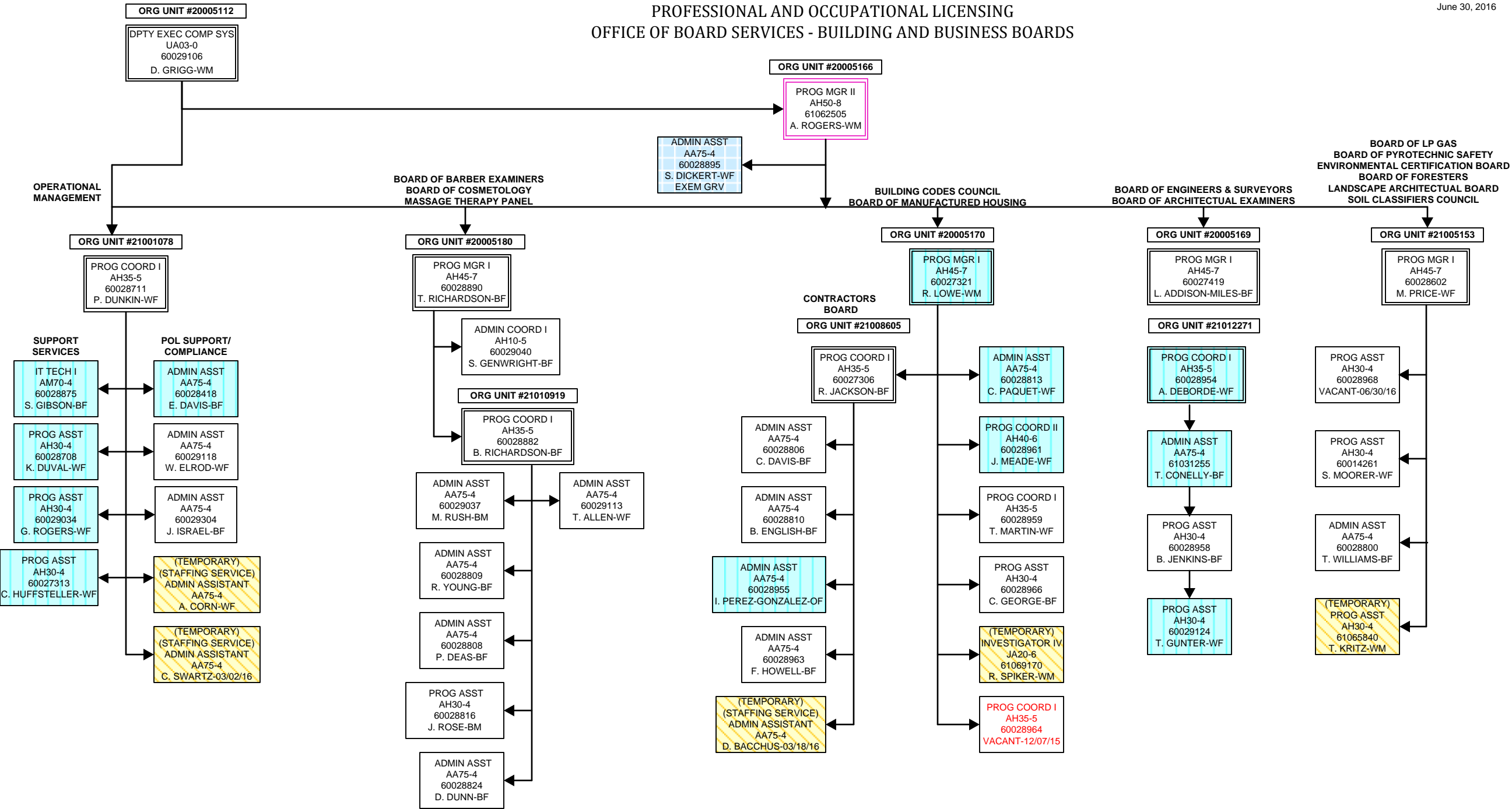


FIRE AND LIFE SAFETY  
FIRE ACADEMY

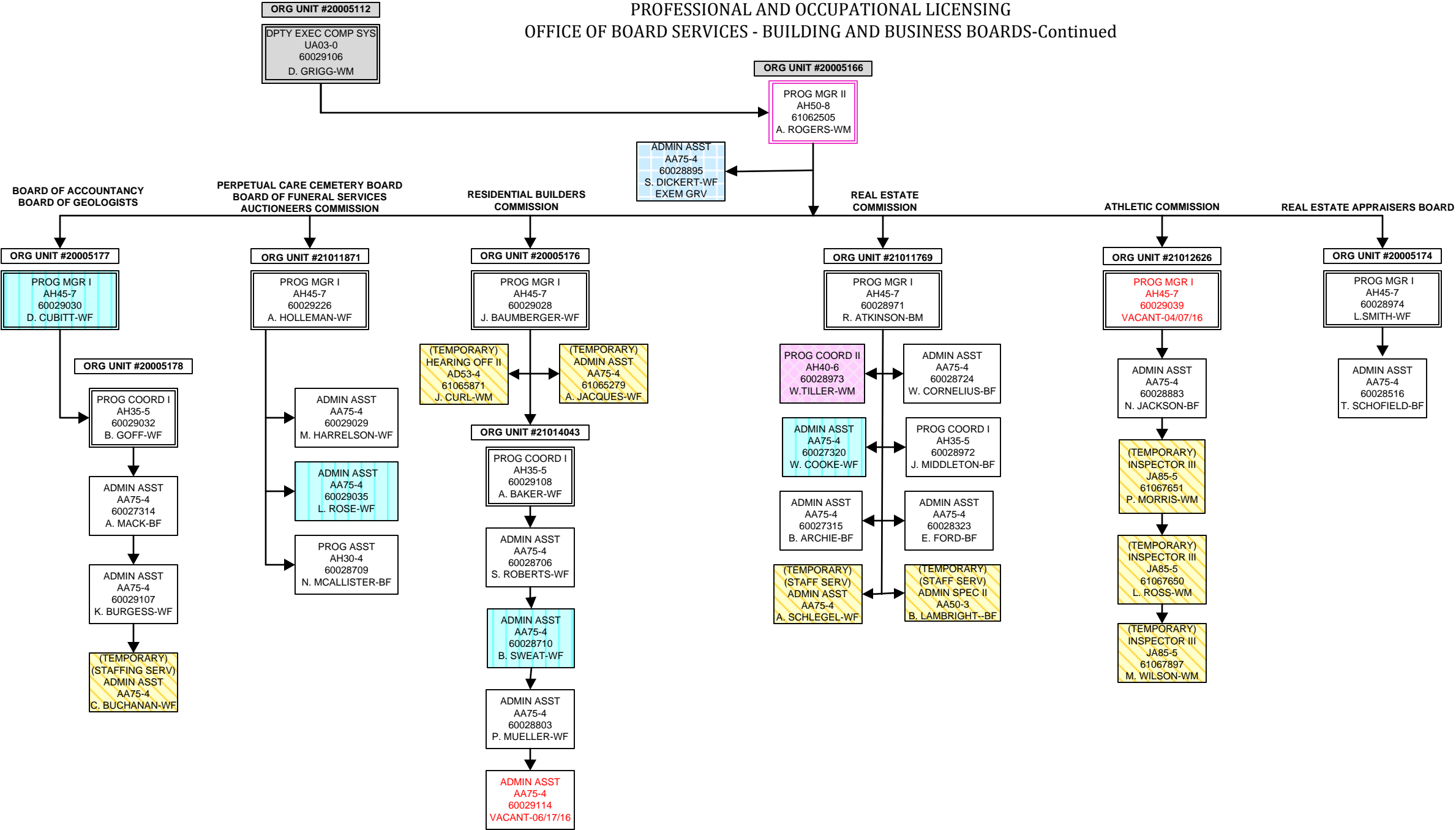
June 30, 2016



PROFESSIONAL AND OCCUPATIONAL LICENSING  
OFFICE OF BOARD SERVICES - BUILDING AND BUSINESS BOARDS



PROFESSIONAL AND OCCUPATIONAL LICENSING  
OFFICE OF BOARD SERVICES - BUILDING AND BUSINESS BOARDS-Continued









DIVISION OF LABOR

June 30, 2016

