
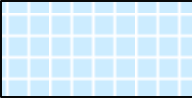
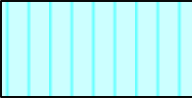




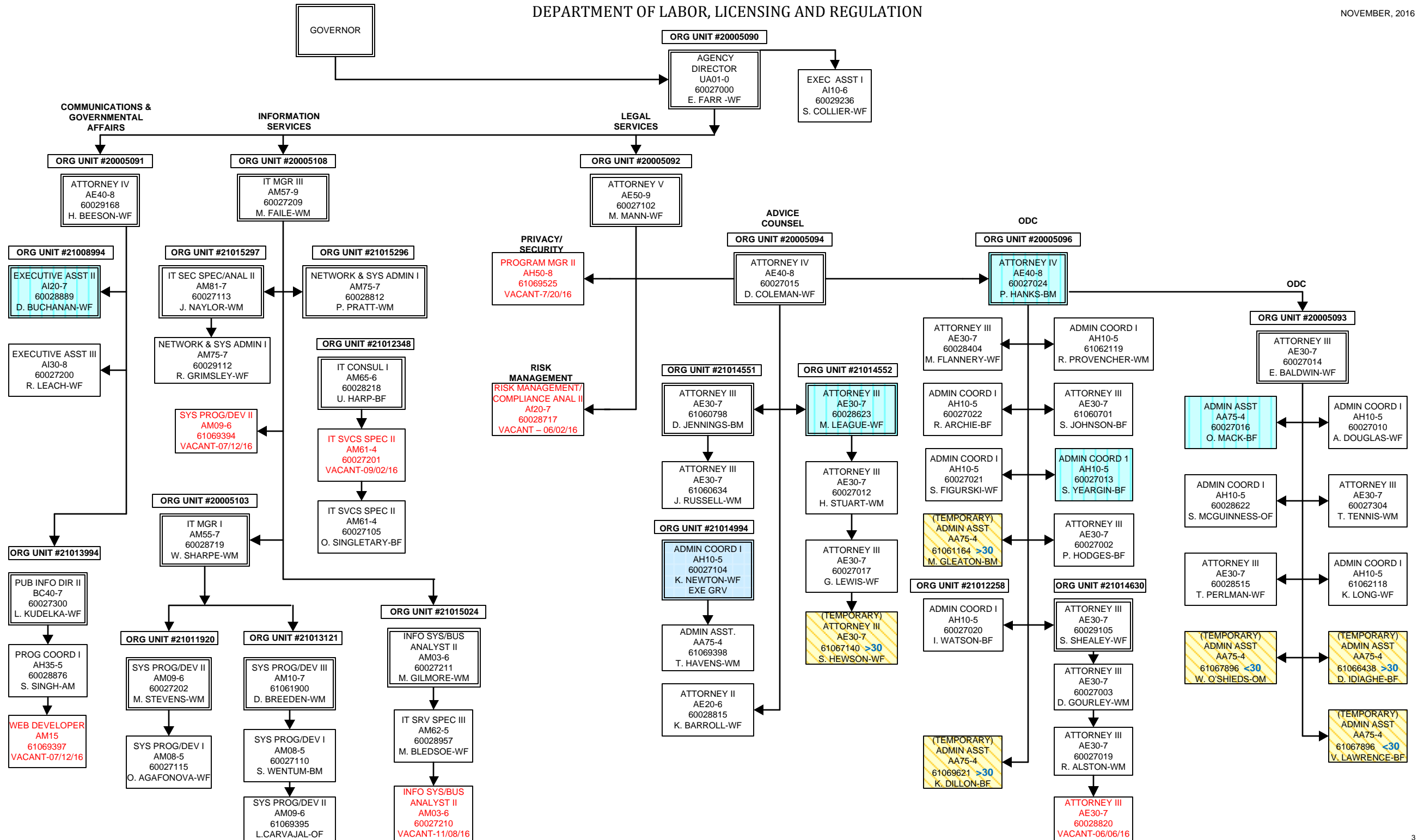


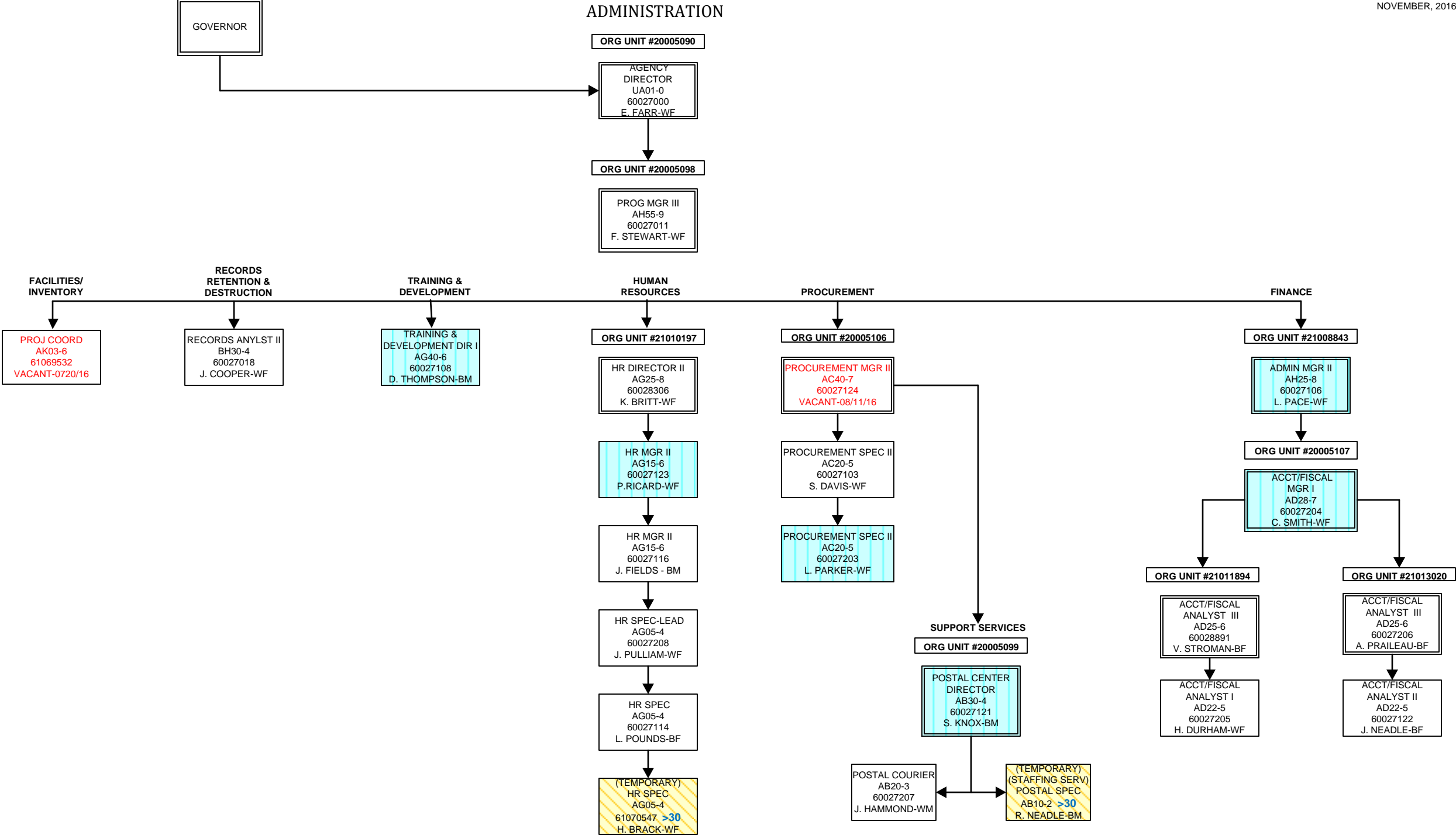
SOUTH CAROLINA  
DEPARTMENT OF LABOR, LICENSING AND REGULATION  
ORGANIZATIONAL CHART

NOVEMBER, 2016

**SOUTH CAROLINA  
DEPARTMENT OF LABOR, LICENSING AND REGULATION  
ORGANIZATIONAL CHARTS**

Pink Diamond		<b>TERI Employee</b>
Light Blue Square		<b>Employee returned after TERI or Retirement</b>
Turquoise Vertical Stripe		<b>Employee eligible to retire within 5 years by service or age</b>
White Solid Red Letters		<b>Vacant Position-Vacancy Date</b>
Yellow Diagonal Stripe		<b>Temporary Employee</b>
Grayed out		<b>Previously counted position</b>
Dark Pink Outline		<b>Borrowed position</b>





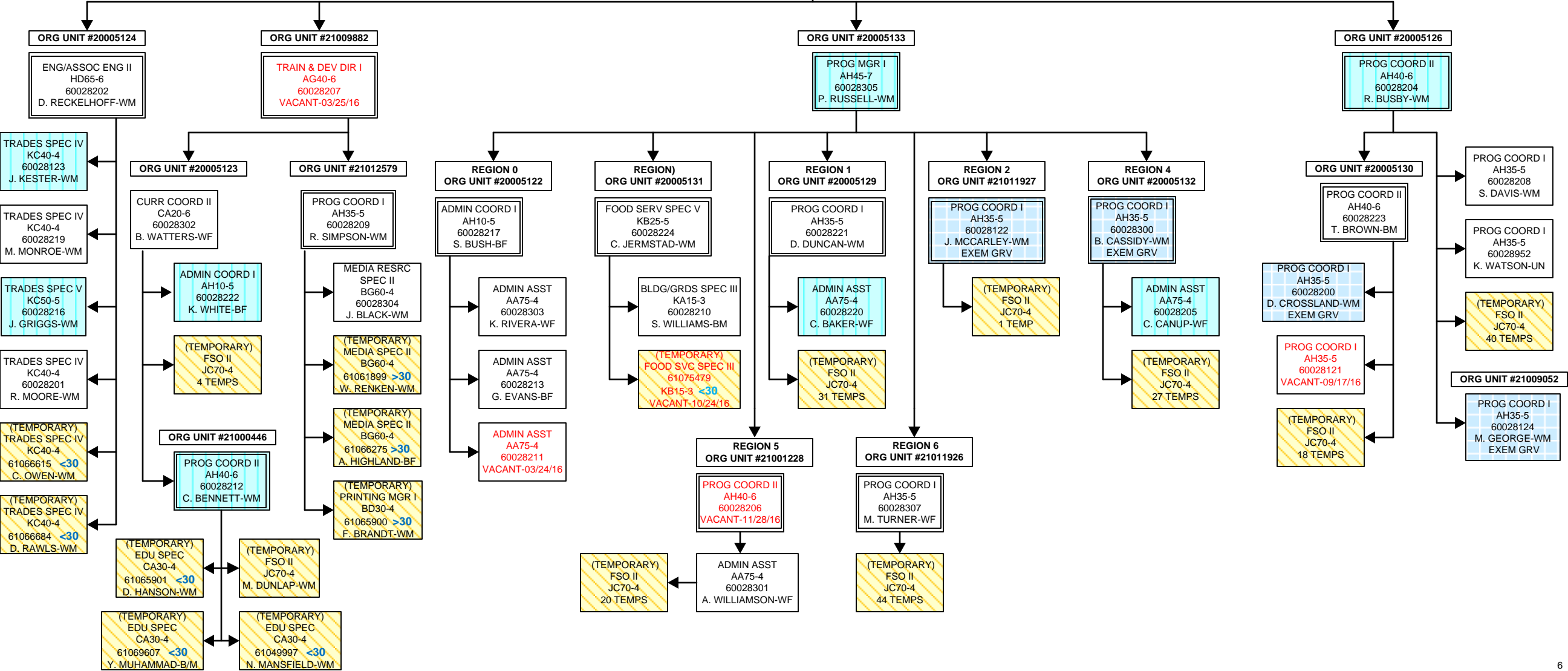
FIRE AND LIFE SAFETY  
FIRE ACADEMY

ORG UNIT #20005115

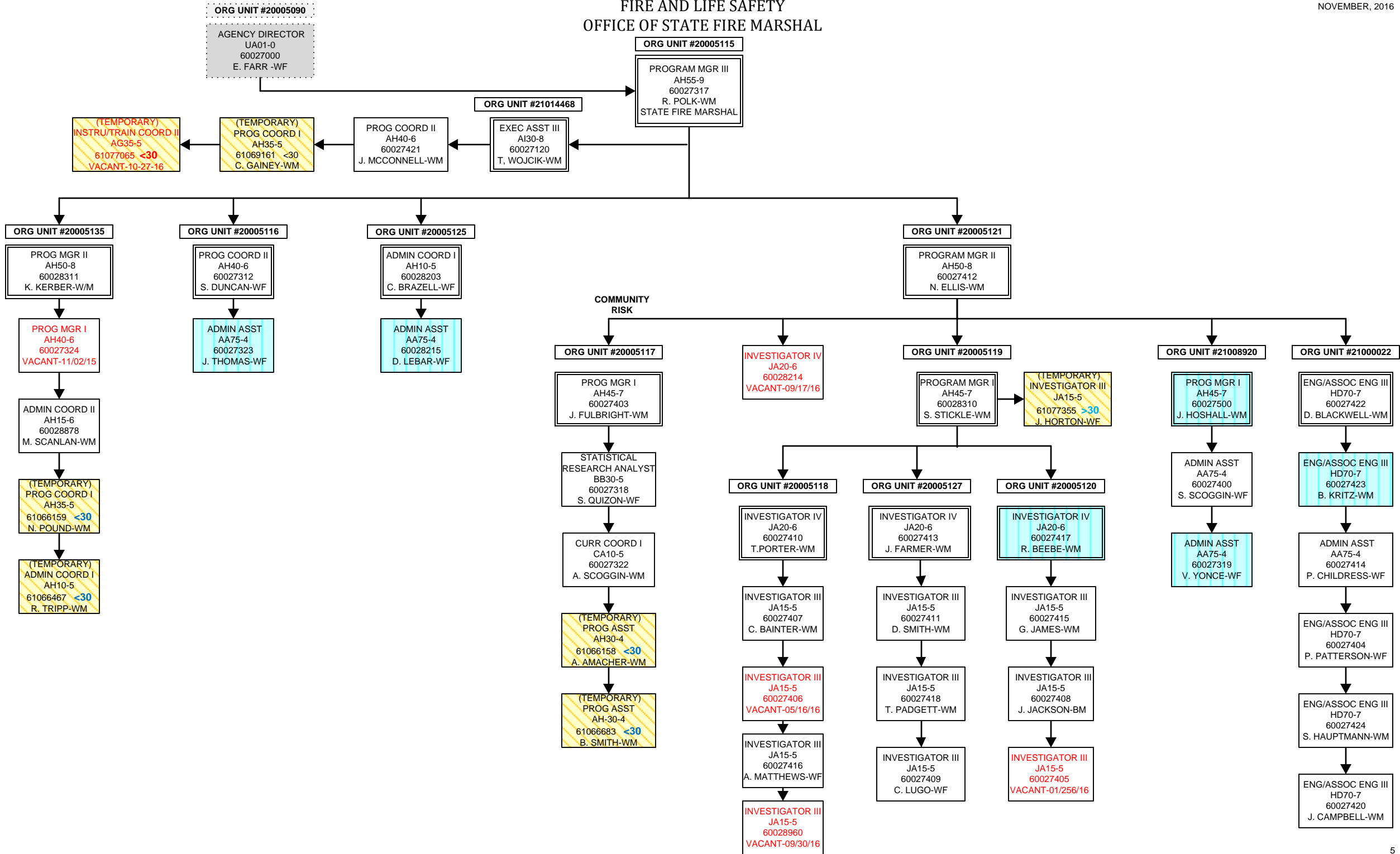
PROGRAM MGR III  
AH55-9  
60027317  
R. POLK-WM  
STATE FIRE MARSHAL

ORG UNIT #20005128

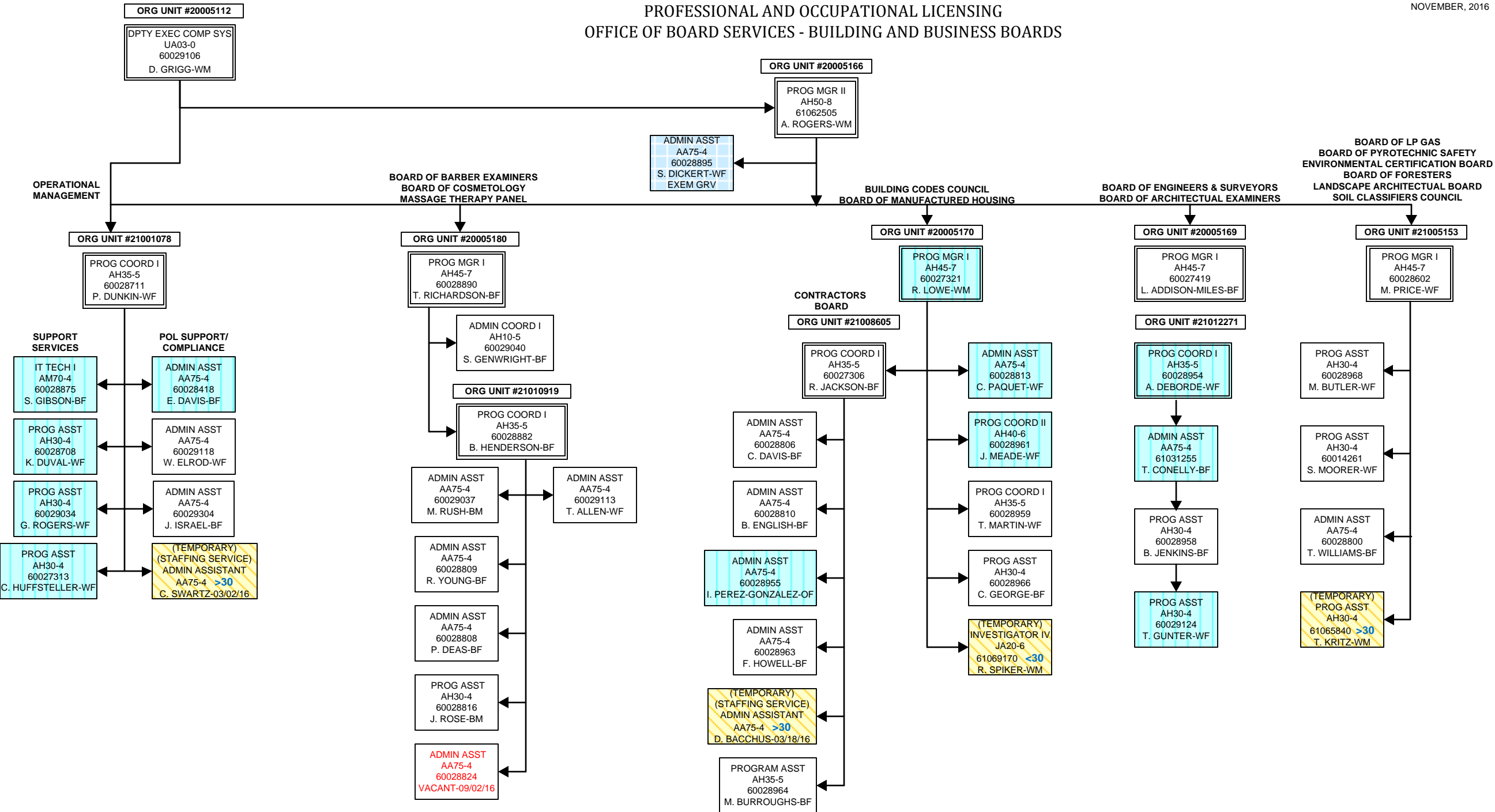
PROG MGR II  
AH50-8  
60028805  
VACANT-7/2/16

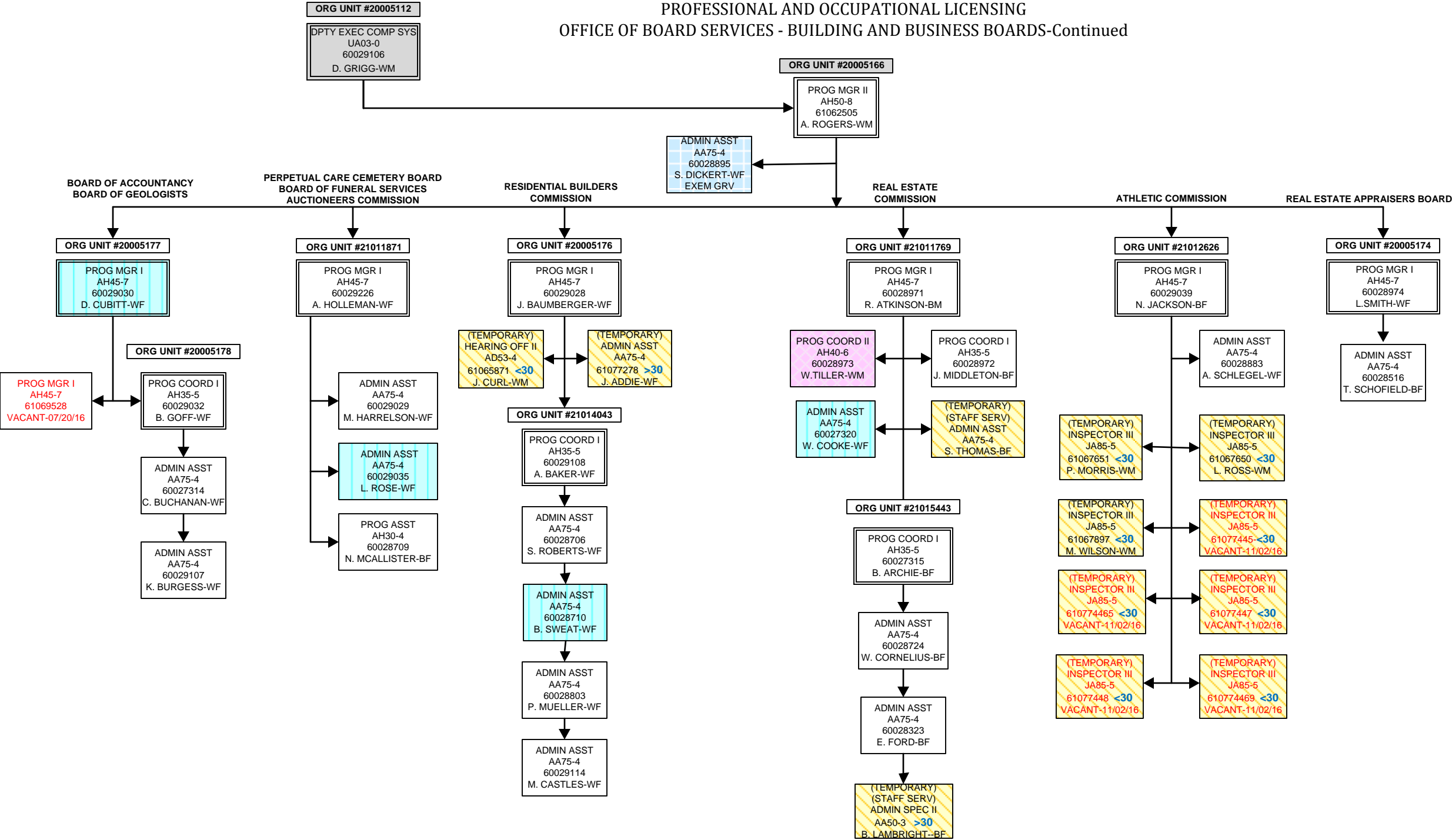


FIRE AND LIFE SAFETY  
OFFICE OF STATE FIRE MARSHAL



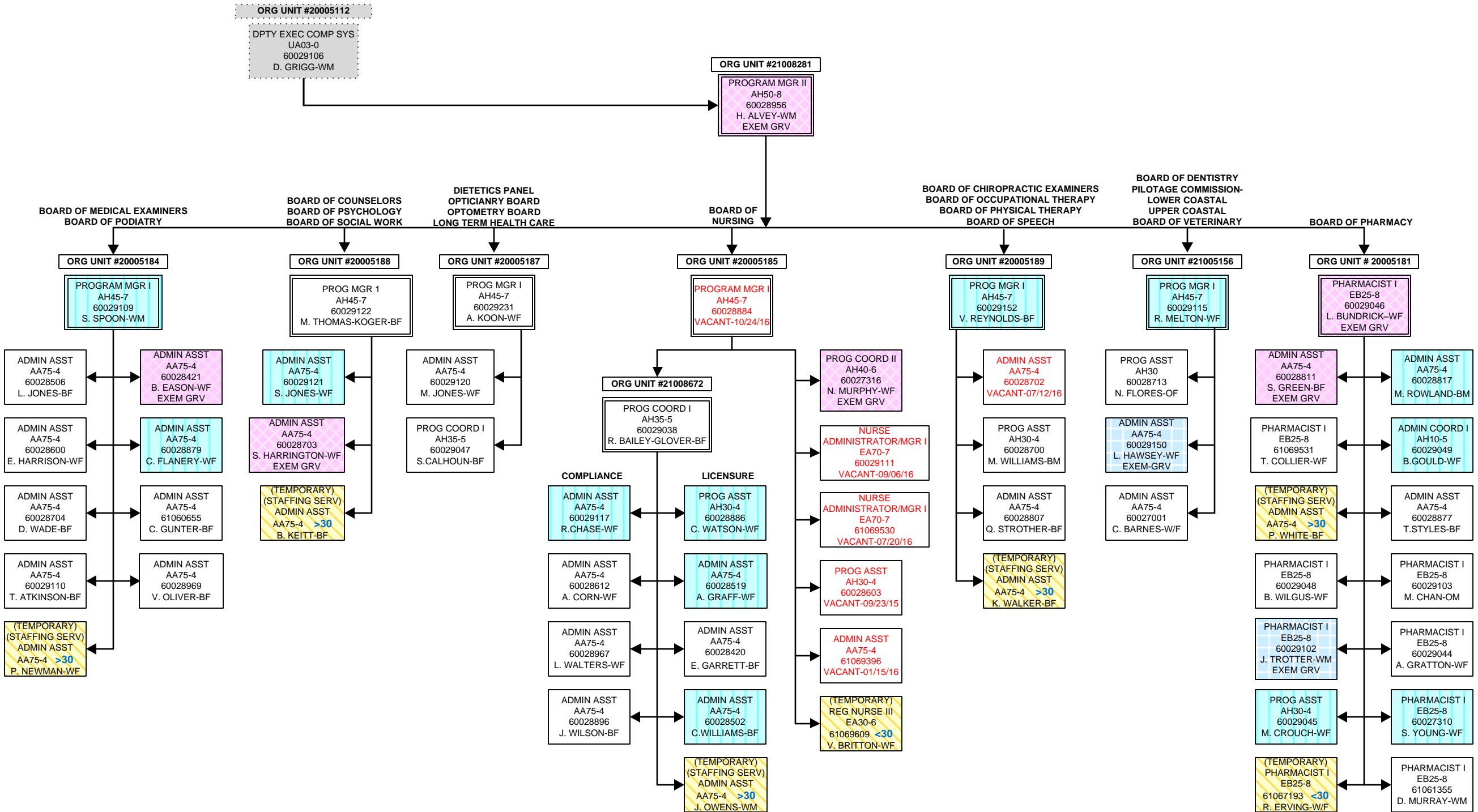
PROFESSIONAL AND OCCUPATIONAL LICENSING  
OFFICE OF BOARD SERVICES - BUILDING AND BUSINESS BOARDS





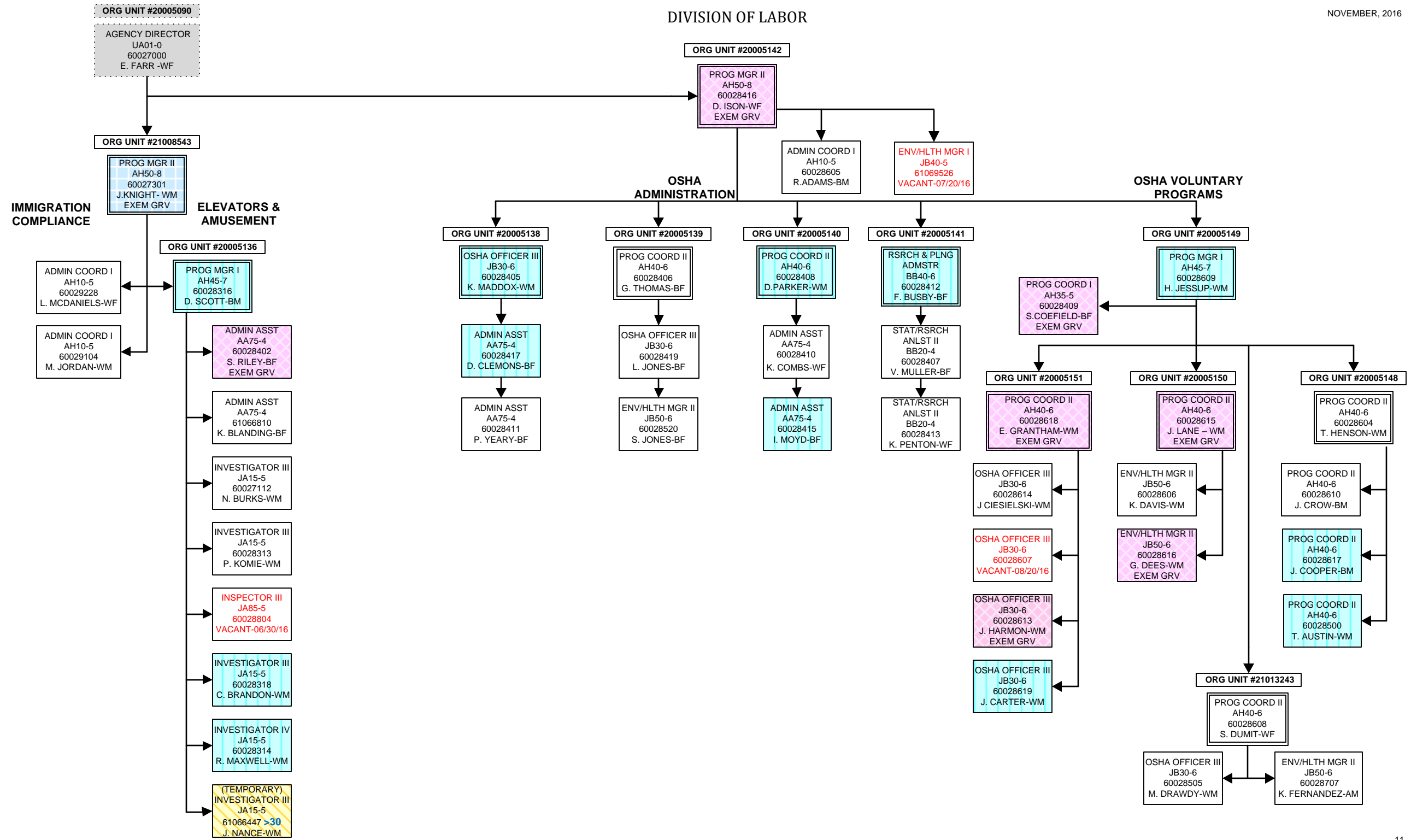


OFFICE OF BOARD SERVICES  
HEALTH AND MEDICALLY RELATED BOARDS





DIVISION OF LABOR



DIVISION OF LABOR  
OSHA-COMPLIANCE

