
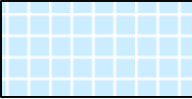
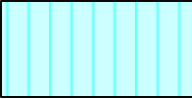



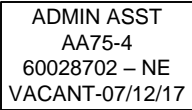
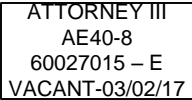
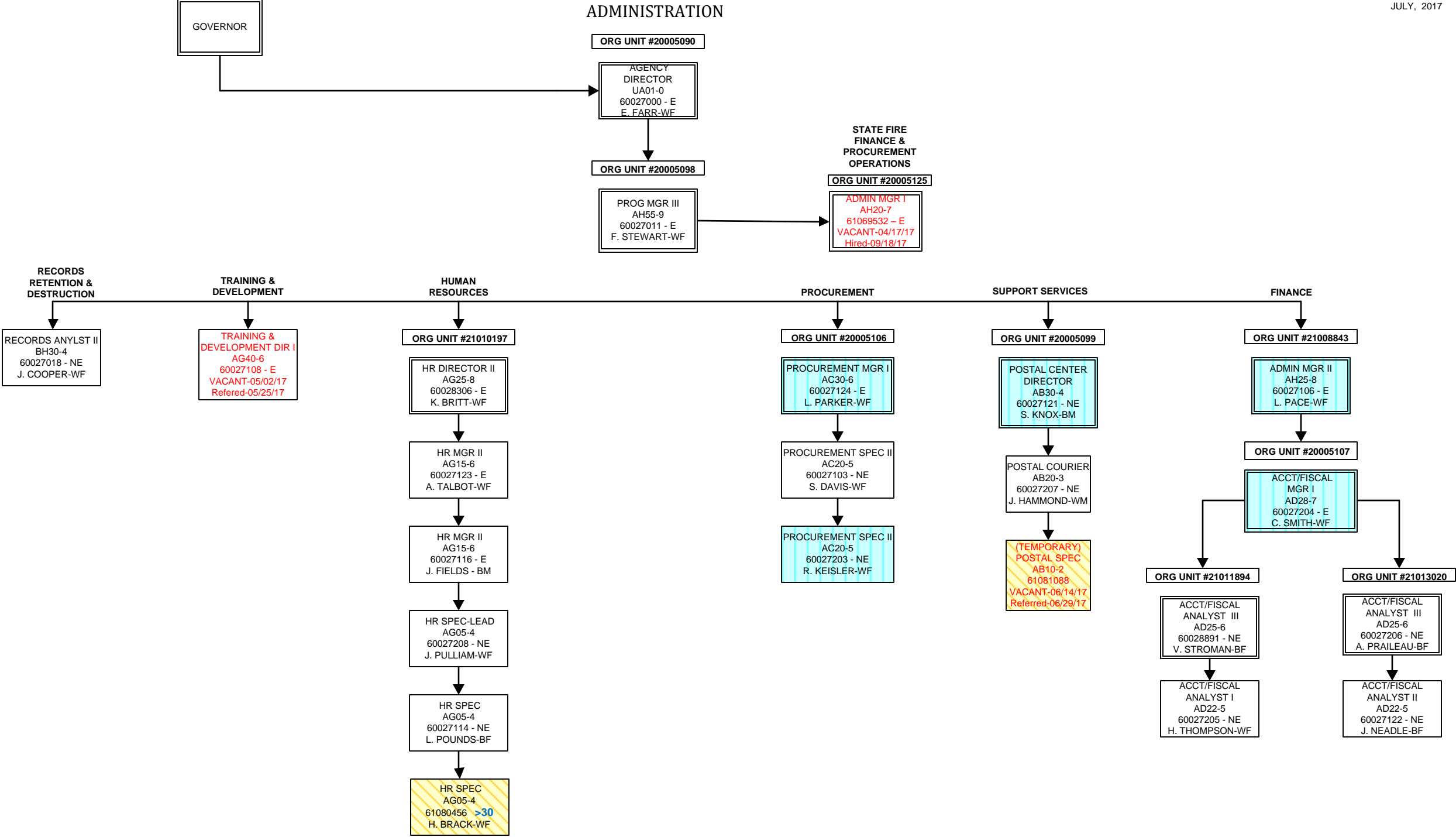


SOUTH CAROLINA
DEPARTMENT OF LABOR, LICENSING AND REGULATION
ORGANIZATIONAL CHART

JULY 2017

SOUTH CAROLINA
DEPARTMENT OF LABOR, LICENSING AND REGULATION
ORGANIZATIONAL CHARTS

Pink Diamond		TERI Employee
Light Blue Square		Employee returned after TERI or Retirement
Turquoise Vertical Stripe		Employee eligible to retire within 5 years by service or age
White Solid Red Letters		Vacant Position-Vacancy Date
Yellow Diagonal Stripe		Temporary Employee
Dark Pink Outline		Borrowed position
NE Designation		Non-exempt position
E Designation		Exempt position



JULY, 2017



FIRE AND LIFE SAFETY
FIRE ACADEMY

JULY, 2017

ORG UNIT #20005115

PROGRAM MGR III
AH55-9
60027317 - E
J. JONES-WM

ORG UNIT #20005128

ACTING
PROG MGR II
AH50-8
60028805 - E
VACANT-06/01/17
Referred-07/07/17

REGIONAL
TRAINING

ORG UNIT #20005133

PROG MGR I
AH45-7
60028305 - E
VACANT-06/01/17

GROUNDS &
MAINTENANCE

CURRICULUM
ACCREDITATIONS

EMS
COORDINATOR

ORG UNIT #20005124

ENG/ASSOC ENG II
HD65-6
60028202 - E
VACANT-12/12/16
Referred-04/17/17

ORG UNIT #21009882

PROG MGR I
AH45-7
60028207 - E
G. SPINKS-WM

ORG UNIT #20005123

CURR COORD II
CA20-6
60028302 - E
B. WATTERS-WF

ONSITE
ACADEMY TRAINING

ORG UNIT #20005126

PROG COORD II
AH40-6
60028204 - E
R. BUSBY-WM

(TEMPORARY)
FSO III
JC70-4
61081424 <30
C. WADE-WM

ORG UNIT #21014468

PROG MGR I
AH45-7
60027120 - E
T. WOJCIK-WM

ADMIN COORD I
AH10-5
60028222 - NE
K. WHITE-BF

(TEMPORARY)
FSO II
JC70-4
61077843 <30
A. ESPOSITO-WM

ORG UNIT #21000446

PROG COORD II
AH40-6
60028212 - E
C. BENNETT-WM

(TEMPORARY)
EDU SPEC
CA30-4
61077772 <30
D. HANSON-WM

(TEMPORARY)
EDU SPEC
CA30-4
61077773 <30
N. MANSFIELD-WM

(TEMPORARY)
FSO II
JC70-4
61078198 <30
M. DUNLAP-WM

(TEMPORARY)
EDU SPEC
CA30-4
61077770 <30
Y. MUHAMMAD-BM

ORG UNIT #21012579

PROG COORD I
AH35-5
60028209 - NE
R. SIMPSON-WM

MEDIA RESRC
SPEC II
BG60-4
60028304 - NE
J. BLACK-WM

NEW FY18
PROG COORD I
AH35-5
61081871 - NE
VACANT-07/27/17
Posted-07/27/17

(TEMPORARY)
PRINTING MGR I
CA30-4
61077742 >30
F. BRANDT-WM

(TEMPORARY)
MEDIA SPEC II
BG60-4
61077743 >30
A. HIGHLAND-BF

(TEMPORARY)
MEDIA SPEC II
BG60-4
61077744 >30
W. RENKIN-WM

ORG UNIT #20005122

ADMIN COORD I
AH10-5
60028217 - NE
S. BUSH-BF

ADMIN ASST
AA75-4
60028210 - NE
K. RIVERA-WF

ADMIN ASST
AA75-4
60028213 - NE
G. EVANS-BF

ADMIN ASST
AA75-4
60028211 - NE
A. ADAMS-BF

(TEMPORARY)
FSO II
JC70-4
61081892 <30
61081893 <30
61081894 <30
61081895 <30
61081896 <30
VACANT-07/27/17

ORG UNIT #20005131

FOOD SERV SPEC V
KB25-5
60028224 - NE
C. JERMSTAD-WM

BLDG/GRDS SPEC III
KA15-3
60028210 - NE
S. WILLIAMS-BM

(TEMPORARY)
FOOD SVC SPEC III
KB15-3 <30
D. CREPAEU-WM

ORG UNIT #21001228

PROG COORD I
AH35-5
60028206 - NE
E. ADAMS - WM

ADMIN ASST
AA75-4
60028301 - NE
A. WILLIAMSON-WF

(TEMPORARY)
FSO II
JC70-4
16 TEMPS

ORG UNIT #20005129

REGION 1 GREENVILLE
PROG COORD I
AH35-5
60028221 - NE
D. DUNCAN-WM

ADMIN ASST
AA75-4
60028220 - NE
C. BAKER-WF

(TEMPORARY)
FSO II
JC70-4
31 TEMPS

(TEMPORARY)
FSO II
JC70-4
61081907 <30
61081908 <30
61081909 <30
61081910 <30
VACANT-07/27/17

ORG UNIT #21011927

REGION 2 YORK CO.
PROG COORD I
AH35-5
60028122 - NE
J. MCCARLEY-WM
EXEM GRV

(TEMPORARY)
FSO II
JC70-4
18 TEMPS

(TEMPORARY)
FSO II
JC70-4
61081902 <30
61081903 <30
16081904 <30
VACANT-07/27/17

ORG UNIT #21011926

REGION 6
AIKEN
PROG COORD I
AH35-5
60028307 - NE
M. TURNER-WF

(TEMPORARY)
FSO II
JC70-4
8 TEMPS

ORG UNIT #20005132

REGION 4 FLORENCE
PROG COORD I
AH35-5
60028300 - NE
B. CASSIDY-WM
EXEM GRV

ADMIN ASST
AA75-4
60028205 - NE
C. CANUP-WF

(TEMPORARY)
FSO II
JC70-4
22 TEMPS

(TEMPORARY)
FSO II
JC70-4
61081897 <30
61081898 <30
61081899 <30
61081900 <30
61081901 <30
VACANT-07/27/17

ORG UNIT #20005130

PROG COORD II
AH40-6
60028223 - E
T. BROWN-BM

PROG COORD I
AH35-5
60028121 - NE
M. REGAL-WM

PROG COORD I
AH35-5
60028124 - NE
M. GEORGE-WM
EXEM GRV

(TEMPORARY)
PROG COORD I
AH40-6
61077868 >30
J. HEADRICK-WM

(TEMPORARY)
FSO II
JC70-4
35 TEMPS

PROG COORD I
AH35-5
60028208 - NE
S. DAVIS-WM

PROG COORD I
AH35-5
60028952 - NE
K. WATSON-UN

ORG UNIT #21009052

PROG COORD I
AH35-5
60028200 - NE
D. CROSSLAND-WM
EXEM GRV

(TEMPORARY)
EQUIP OPER III
KD45-3 >30
T. SHARPE-WM

(TEMPORARY)
FSO II
JC70-4
21 TEMPS

PROG COORD II
AH40-6
60027421 - NE
VACANT-05/19/17

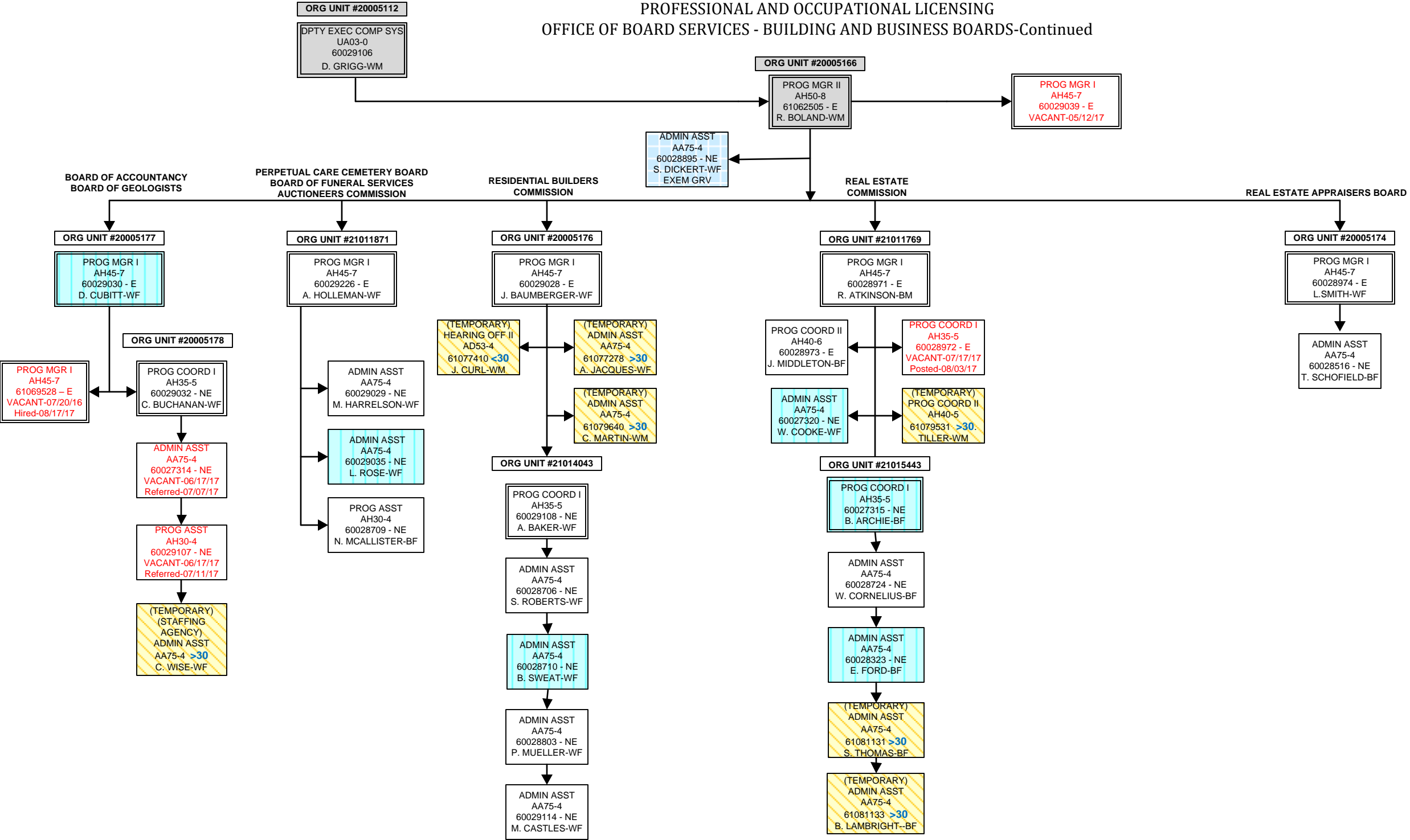
(TEMPORARY)
INSTRU/TRAIN COORD II
AG35-5
61077065 <30
A. SIMMONS-WM

(TEMPORARY)
FSO II
JC70-4
61081425 <30
61081426 <30
61081427 <30
VACANT-06/30/17
Posted-06/30/17

(TEMPORARY)
EQUIP OPER III
KD45-3
61081094 >30
VACANT-06/09/17
Referred-08/03/17



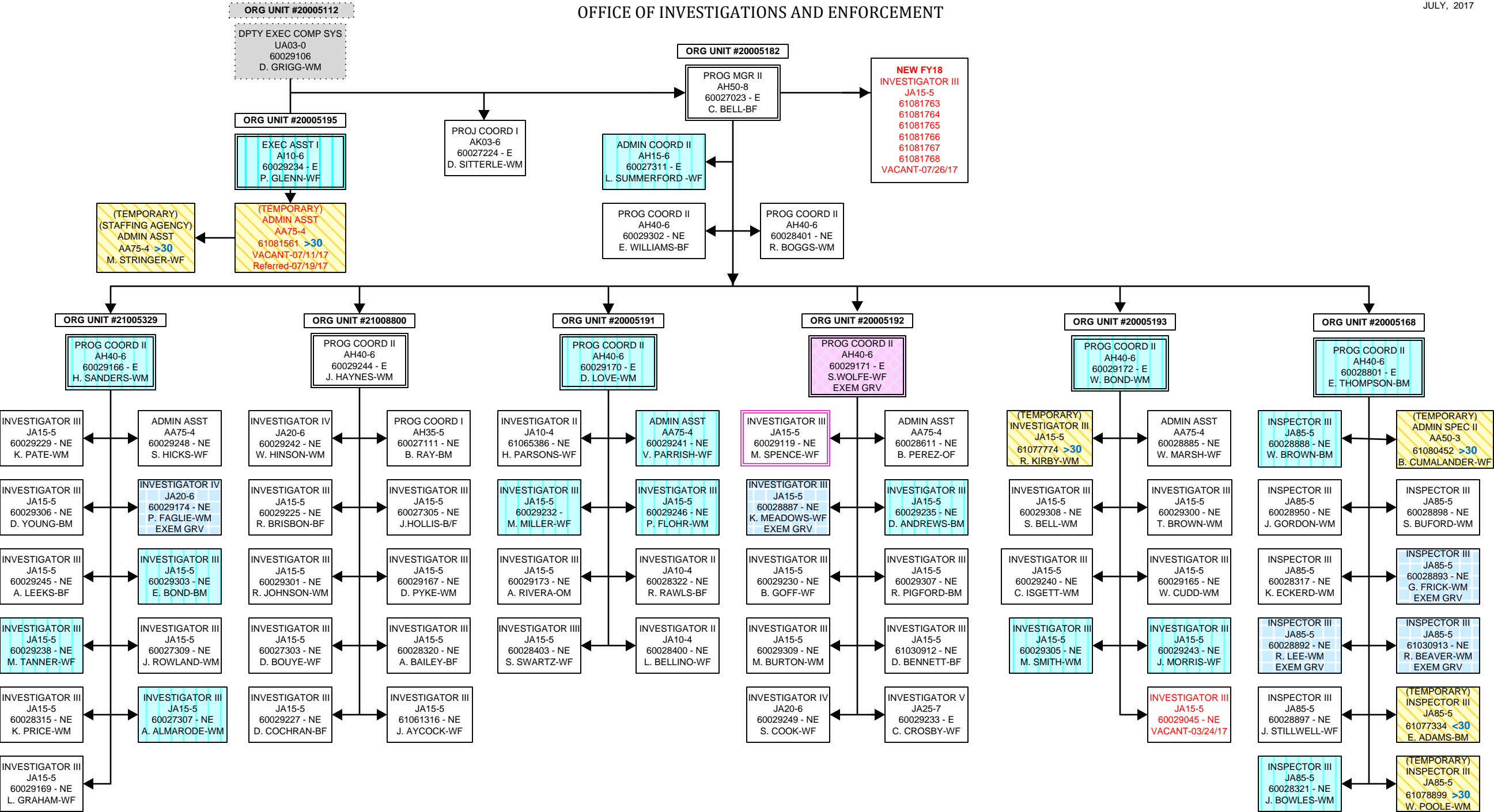
PROFESSIONAL AND OCCUPATIONAL LICENSING
OFFICE OF BOARD SERVICES - BUILDING AND BUSINESS BOARDS-Continued



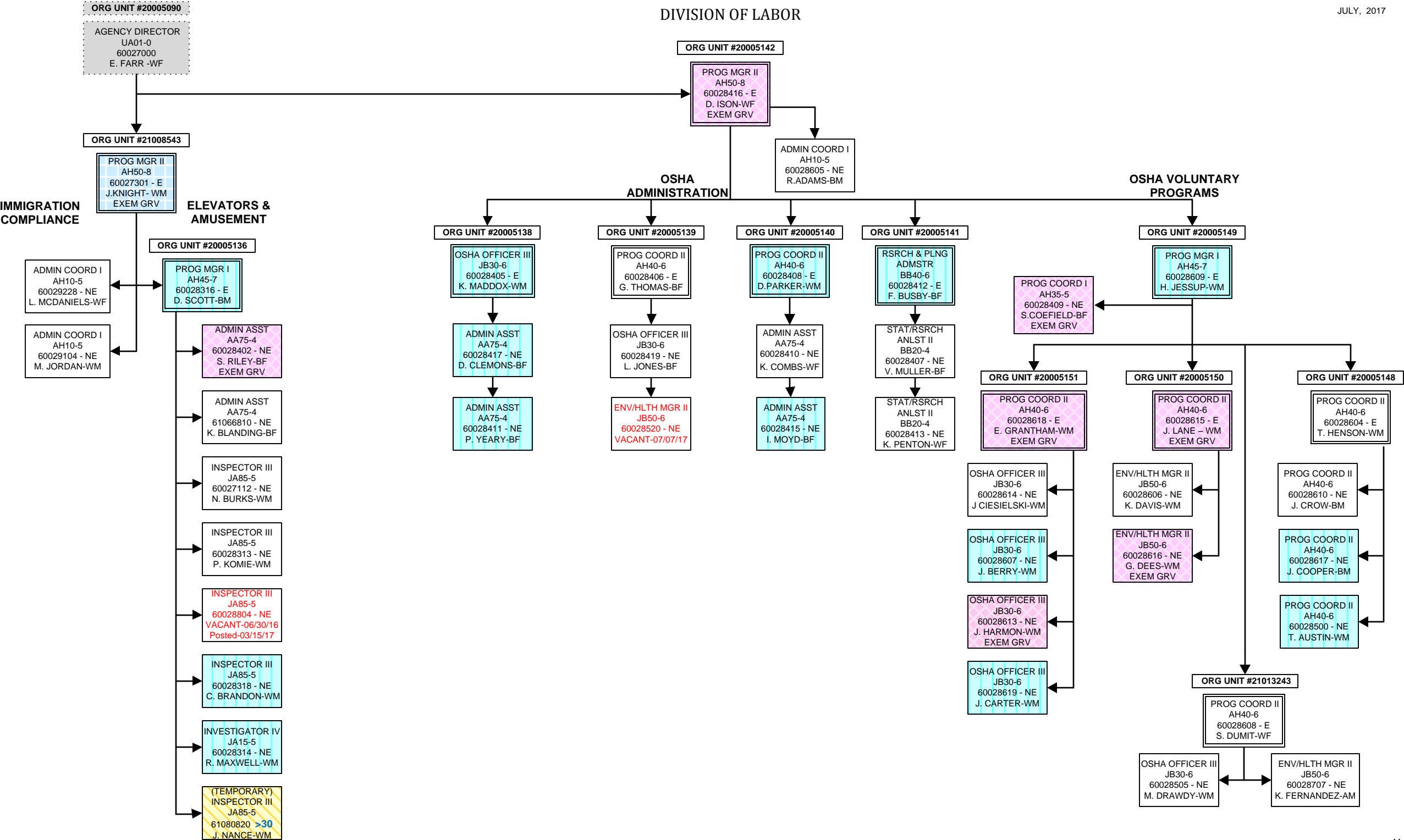


OFFICE OF INVESTIGATIONS AND ENFORCEMENT

JULY, 2017



DIVISION OF LABOR



DIVISION OF LABOR
OSHA-COMPLIANCE

