
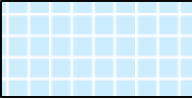
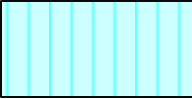






SOUTH CAROLINA  
DEPARTMENT OF LABOR, LICENSING AND REGULATION  
ORGANIZATIONAL CHART

MAY 31, 2016

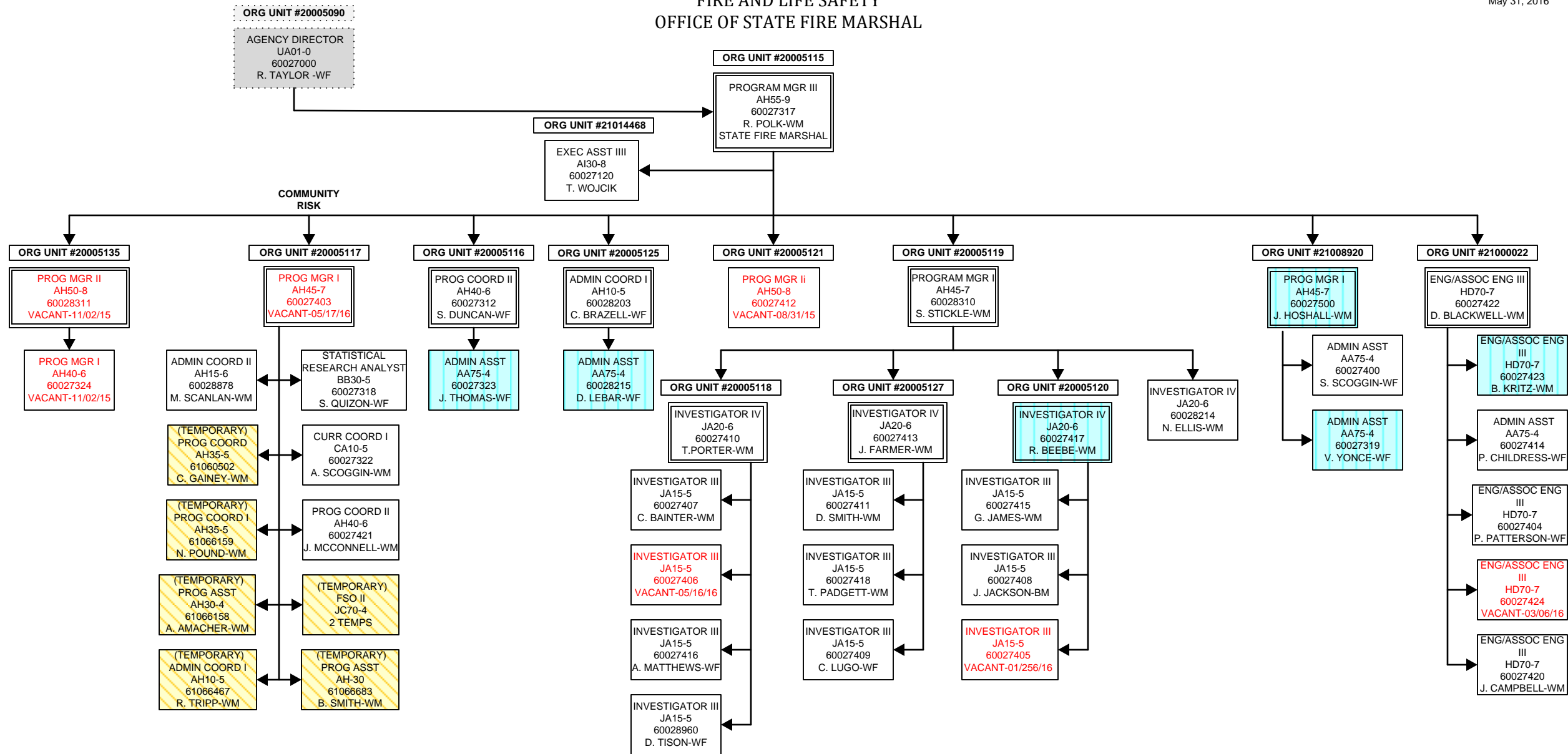
SOUTH CAROLINA  
DEPARTMENT OF LABOR, LICENSING AND REGULATION  
ORGANIZATIONAL CHARTS

Pink Diamond		TERI Employee
Light Blue Square		Employee returned after TERI or Retirement
Turquoise Vertical Stripe		Employee eligible to retire within 5 years by service or age
White Solid Red Letters		Vacant Position-Vacancy Date
Yellow Diagonal Stripe		Temporary Employee
Grayed out		Previously counted position
Dark Pink Outline		Borrowed position



FIRE AND LIFE SAFETY  
OFFICE OF STATE FIRE MARSHAL

May 31, 2016



FIRE AND LIFE SAFETY  
FIRE ACADEMY

May 31, 2016

ORG UNIT #20005115  
PROGRAM MGR III  
AH55-9  
60027317  
R. POLK-WM  
STATE FIRE MARSHAL

ORG UNIT #20005128  
PROG MGR II  
AH50-8  
60028805  
K. KERBER-WM

ORG UNIT #20005134

PROG COORD I  
AH10-5  
60028211  
VACANT-03/24/16

ORG UNIT #20005124  
ENG/ASSOC ENG II  
HD65-6  
60028202  
D. RECKELHOFF-WM

ORG UNIT #21009882  
TRAIN & DEV DIR I  
AG40-6  
60028207  
VACANT-03/25/16

ORG UNIT #20005133  
PROG MGR I  
AH45-7  
60028305  
P. RUSSELL-WM

ORG UNIT #20005126  
PROG COORD II  
AH40-6  
60028204  
R. BUSBY-WM

TRADES SPEC IV  
KC40-4  
60028123  
J. KESTER-WM

TRADES SPEC IV  
KC40-4  
60028219  
M. MONROE-WM

TRADES SPEC V  
KC50-5  
60028216  
J. GRIGGS-WM

TRADES SPEC IV  
KC40-4  
60028201  
R. MOORE-WM

(TEMPORARY)  
TRADES SPEC IV  
KC40-4  
61056615  
C. OWEN-WM

(TEMPORARY)  
TRADES SPEC IV  
KC40-4  
61066684  
D. RAWLS-WM

ORG UNIT #20005123  
CURR COORD II  
CA20-6  
60028302  
B. WATTERS-WF

ADMIN COORD I  
AH10-5  
60028222  
K. WHITE-BF

(TEMPORARY)  
FSO II  
JC70-4  
3 TEMPS

ORG UNIT #21000446  
PROG COORD II  
AH40-6  
60028212  
C. BENNETT-WM

(TEMPORARY)  
EDU SPEC  
CA30-4  
61066093  
D. HANSON-WM

(TEMPORARY)  
EDU SPEC  
CA30-4  
61066093  
K. WATSON-BF

(TEMPORARY)  
FSO II  
JC70-4  
1 TEMP

(TEMPORARY)  
EDU SPEC  
CA30-4  
61049997  
N. MANSFIELD-WM

ORG UNIT #21012579  
PROG COORD I  
AH35-5  
60028209  
R. SIMPSON

MEDIA RESRC  
SPEC II  
BG60-4  
60028304  
J. BLACK-WM

(TEMPORARY)  
MEDIA SPEC II  
BG60-4  
61061899  
W. RENKIN-WM

(TEMPORARY)  
MEDIA SPEC II  
BG60-4  
61066275  
A. HIGHLAND-BF

(TEMPORARY)  
PRINTING MGR I  
BD30-4  
61065900  
F. BRANDT-WM

REGION 0  
ORG UNIT #20005122  
ADMIN COORD I  
AH10-5  
60028217  
S. BUSH-BF

ADMIN ASST  
AA75-4  
60028303  
K. RIVERA-WF

ADMIN ASST  
AA75-4  
60028213  
G. EVANS-BF

REGION)  
ORG UNIT #20005131  
FOOD SERV SPEC V  
KB25-5  
60028224  
C. JERMSTAD-WM

BLDG/GRDS SPEC III  
KA15-3  
60028210  
S. WILLIAMS-BM

REGION 1  
ORG UNIT #20005129  
PROG COORD I  
AH35-5  
60028221  
D. DUNCAN-WM

ADMIN ASST  
AA75-4  
60028220  
C. BAKER-WF

(TEMPORARY)  
FSO II  
JC70-4  
38 TEMPS

REGION 5  
ORG UNIT #21001228  
PROG COORD II  
AH40-6  
60028206  
B. TURNER-WM

ADMIN ASST  
AA75-4  
60028301  
A. WILLIAMSON-WF

(TEMPORARY)  
FSO II  
JC70-4  
22 TEMPS

REGION 6  
ORG UNIT #21011926  
PROG COORD I  
AH35-5  
60028307  
M. TURNER-WF

(TEMPORARY)  
FSO II  
JC70-4  
43 TEMPS

REGION 2  
ORG UNIT #21011927  
PROG COORD I  
AH35-5  
60028122  
J. MCCARLEY-WM  
EXEM GRV

(TEMPORARY)  
FSO II  
JC70-4  
1 TEMP

REGION 4  
ORG UNIT #20005132  
PROG COORD I  
AH35-5  
60028300  
B. CASSIDY-WM  
EXEM GRV

ADMIN ASST  
AA75-4  
60028205  
C. CANUP-WF

(TEMPORARY)  
FSO II  
JC70-4  
28 TEMPS

ORG UNIT #20005130  
PROG COORD II  
AH40-6  
60028223  
T. BROWN-BM

PROG COORD I  
AH35-5  
60028200  
D. CROSSLAND-WM  
EXEM GRV

PROG COORD I  
AH35-5  
60028121  
K. ISEMAN-WF

(TEMPORARY)  
FSO II  
JC70-4  
19 TEMPS

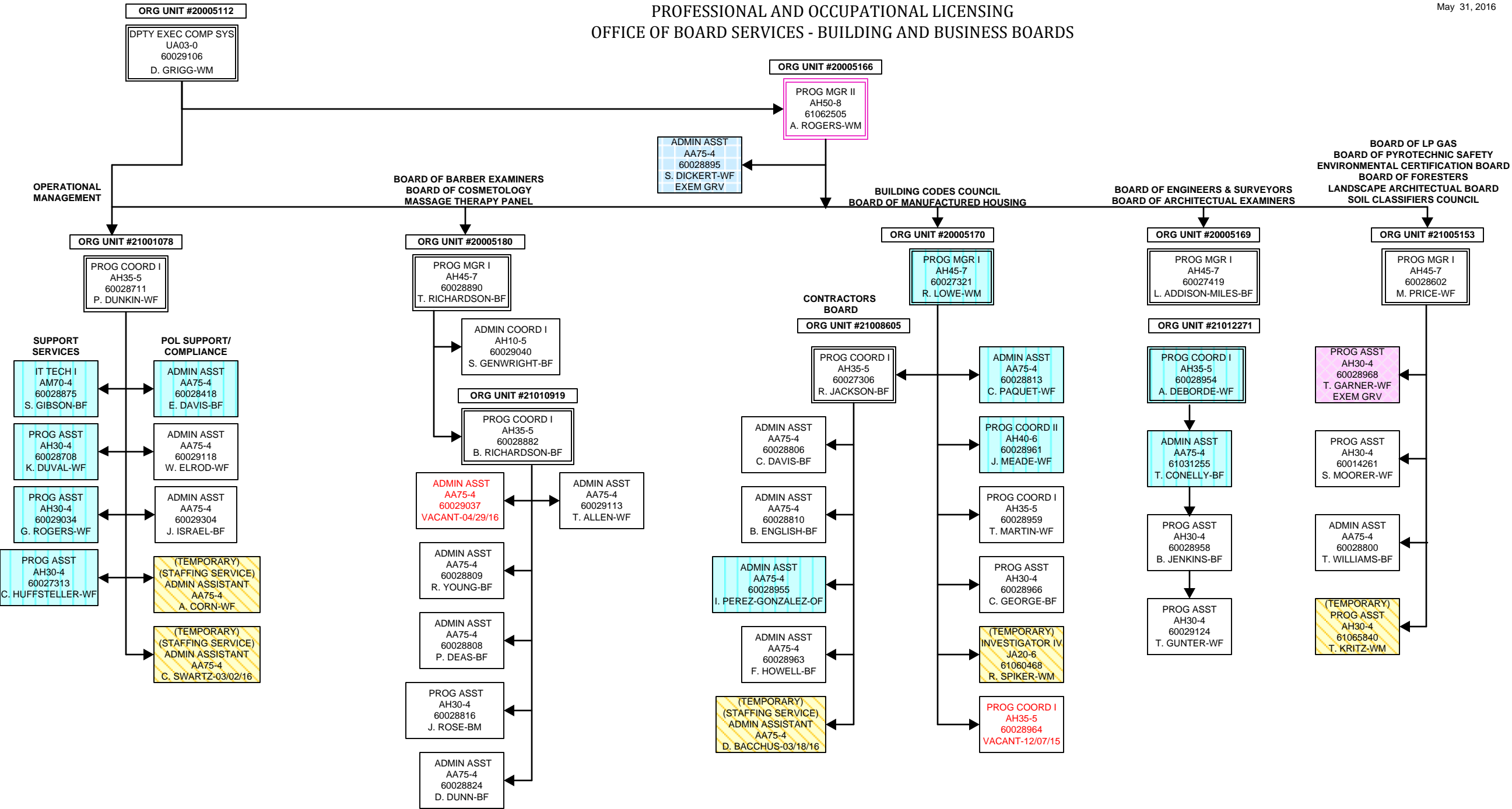
PROG COORD I  
AH35-5  
60028208  
S. DAVIS-WM

PROG COORD I  
AH35-5  
60028952  
VACANT-12/17/15

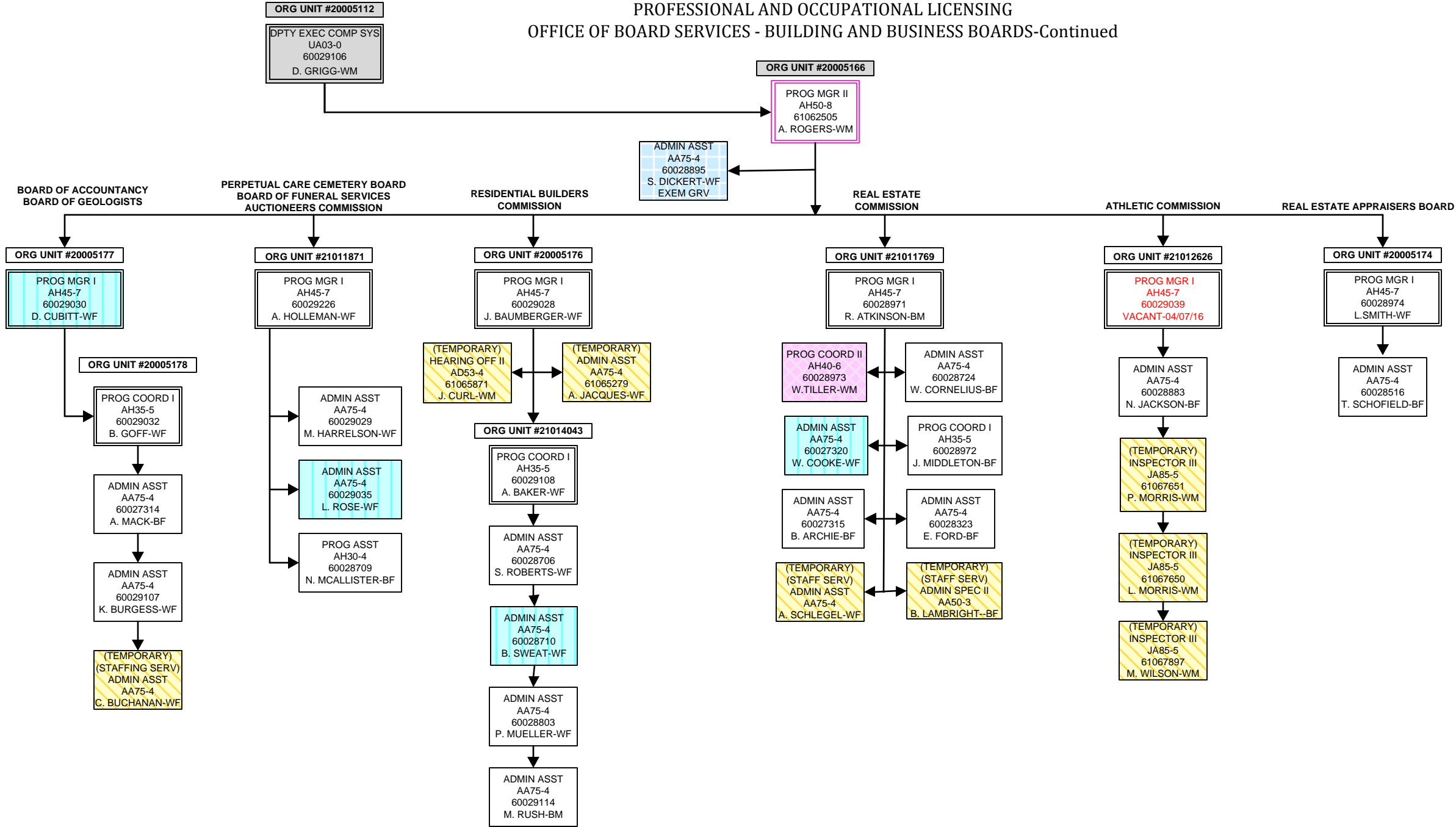
(TEMPORARY)  
FSO II  
JC70-4  
45 TEMPS

ORG UNIT #21009052  
PROG COORD I  
AH35-5  
60028124  
M. GEORGE-WM  
EXEM GRV

PROFESSIONAL AND OCCUPATIONAL LICENSING  
OFFICE OF BOARD SERVICES - BUILDING AND BUSINESS BOARDS

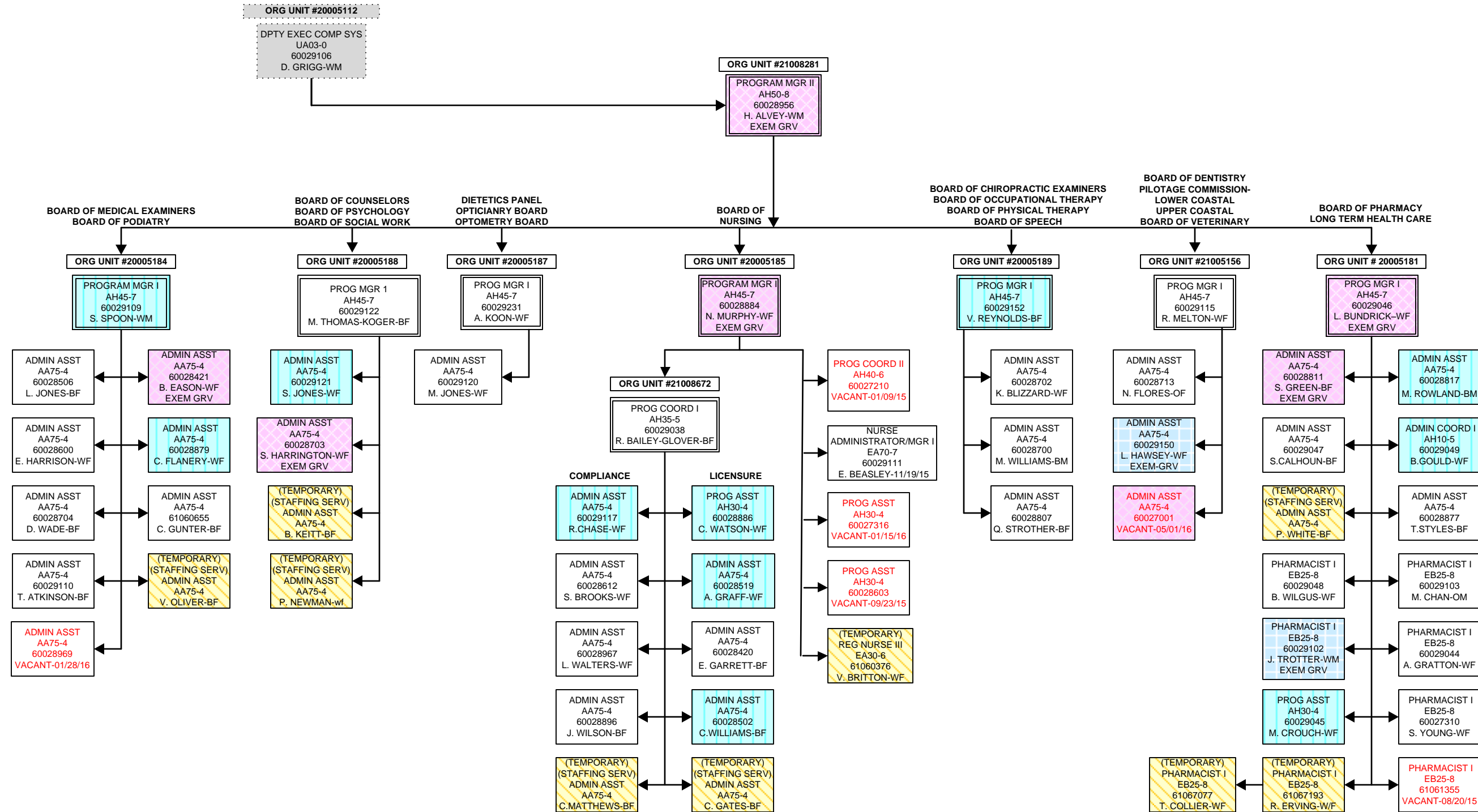


PROFESSIONAL AND OCCUPATIONAL LICENSING  
OFFICE OF BOARD SERVICES - BUILDING AND BUSINESS BOARDS-Continued



OFFICE OF BOARD SERVICES  
HEALTH AND MEDICALLY RELATED BOARDS

May 31, 2016







DIVISION OF LABOR  
OSHA-COMPLIANCE

