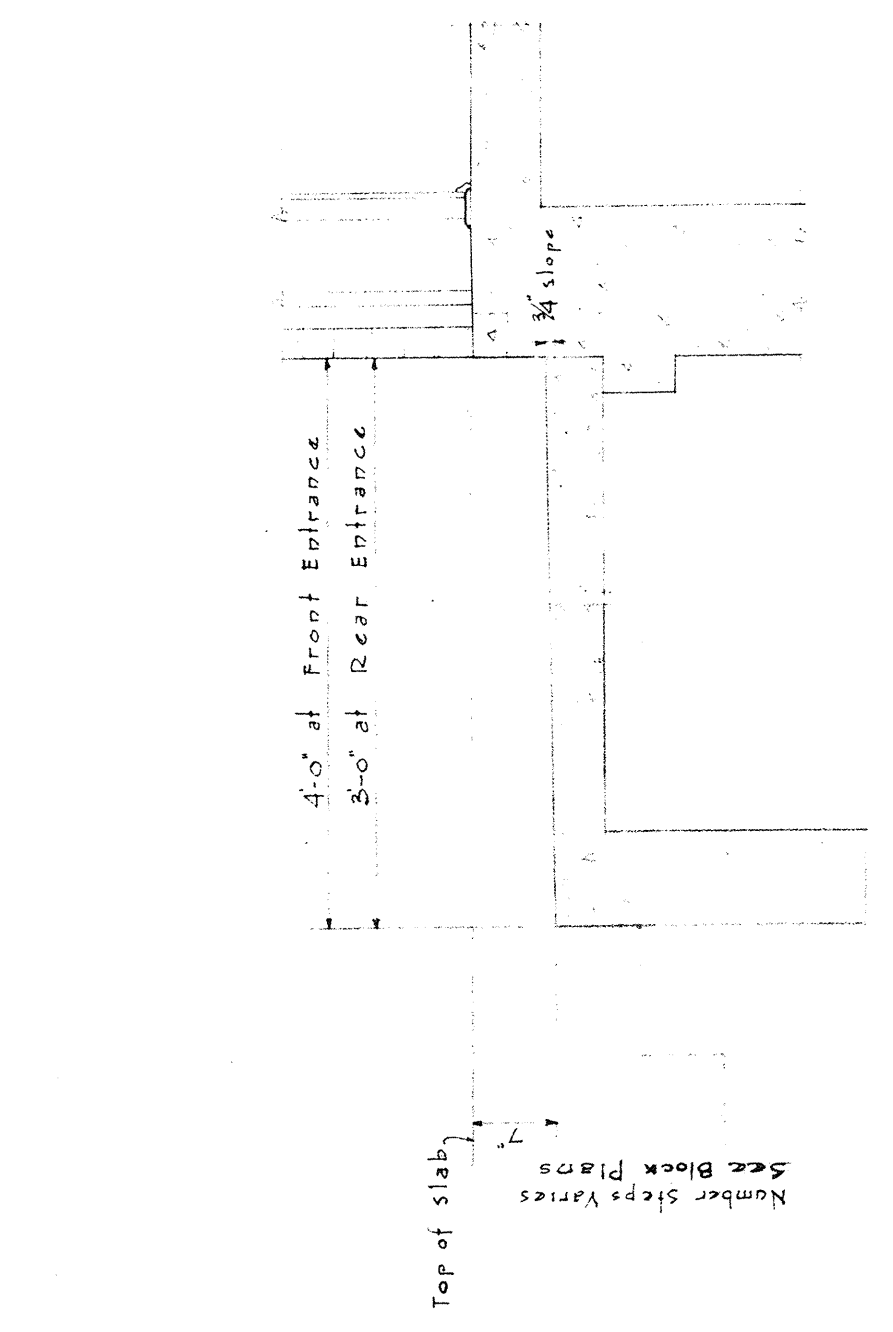
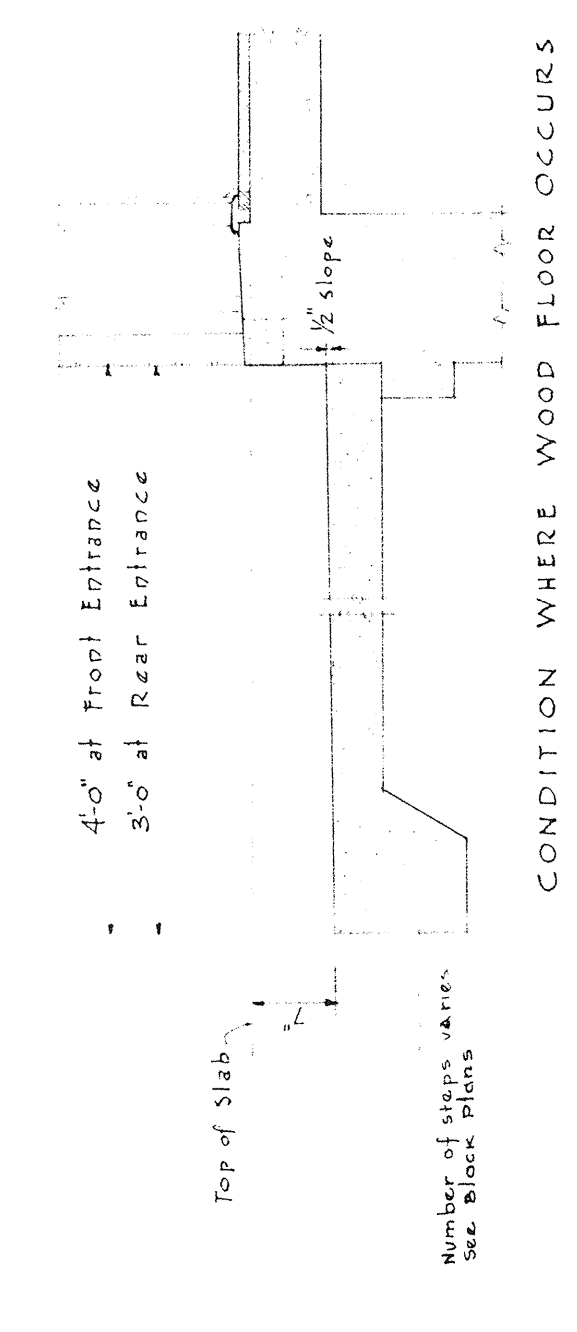


FULL SIZE DETAILS OF EXTERIOR DOOR FRAME

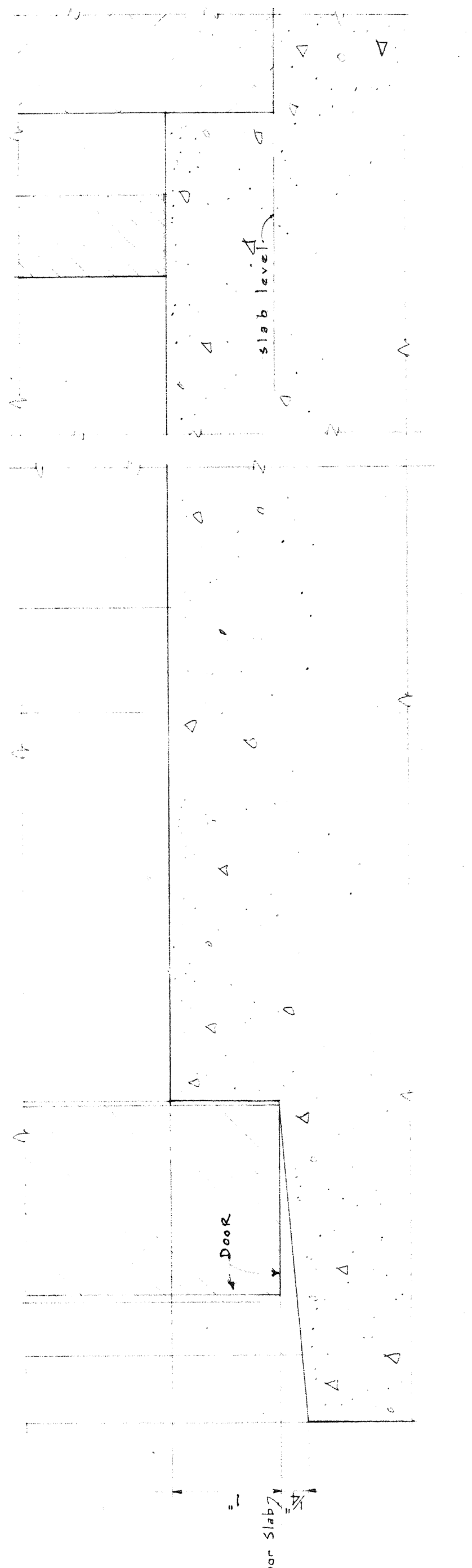
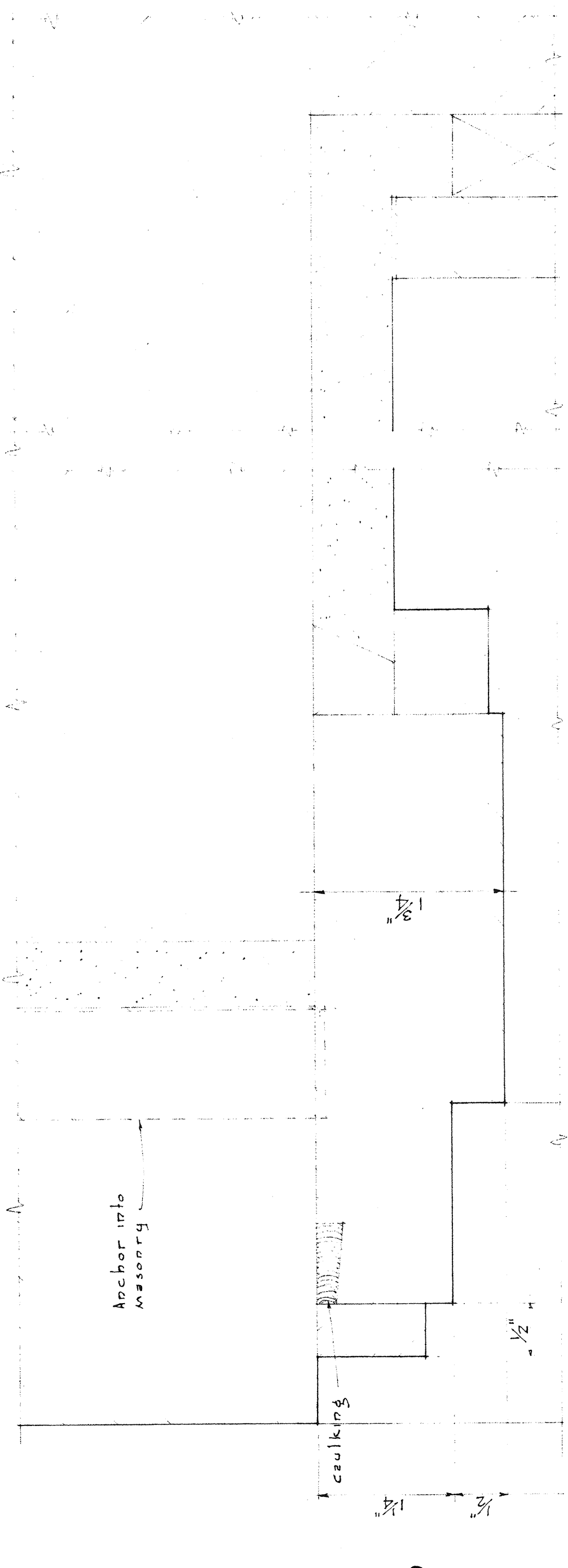
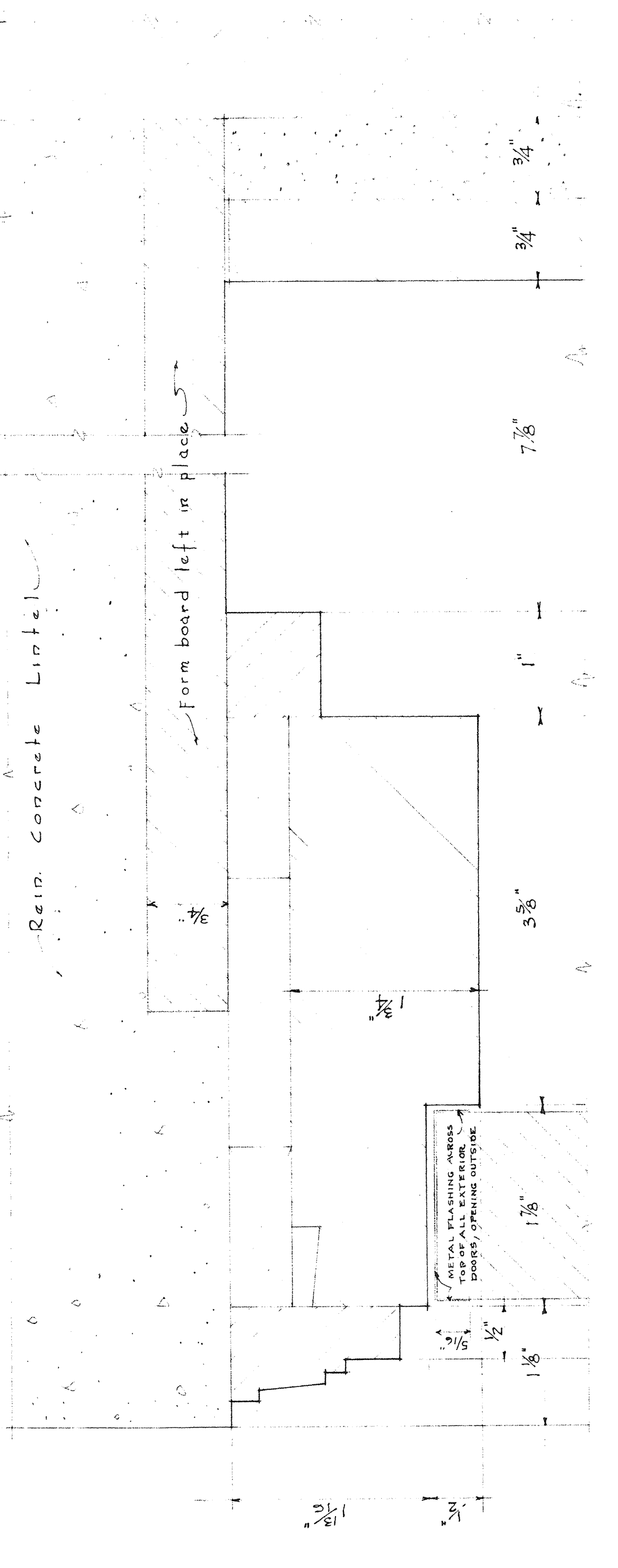


CONDITION WHERE CEMENT FLOOR OCCURS

SECTIONS THRU DOOR AND PLATFORM

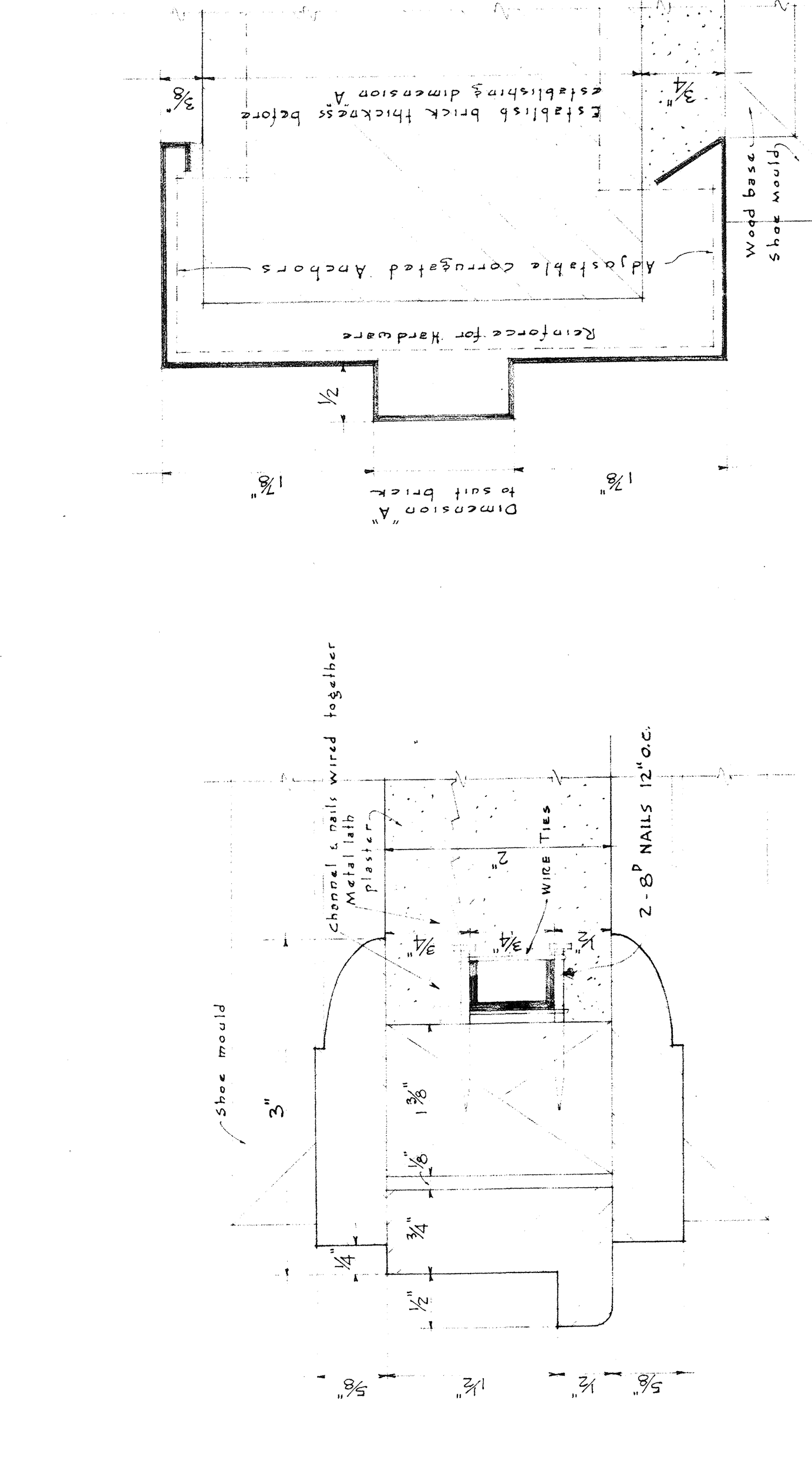
SCALE 3/4" = 1'-0"

SEE DETAIL OF DOOR AND PLATFORM FOR DETAIL OF CURB - GRADE TO PLATFORM



FULL SIZE DETAILS OF ELECTRIC DIST. CENTER

SEE DWG. NO. E 608

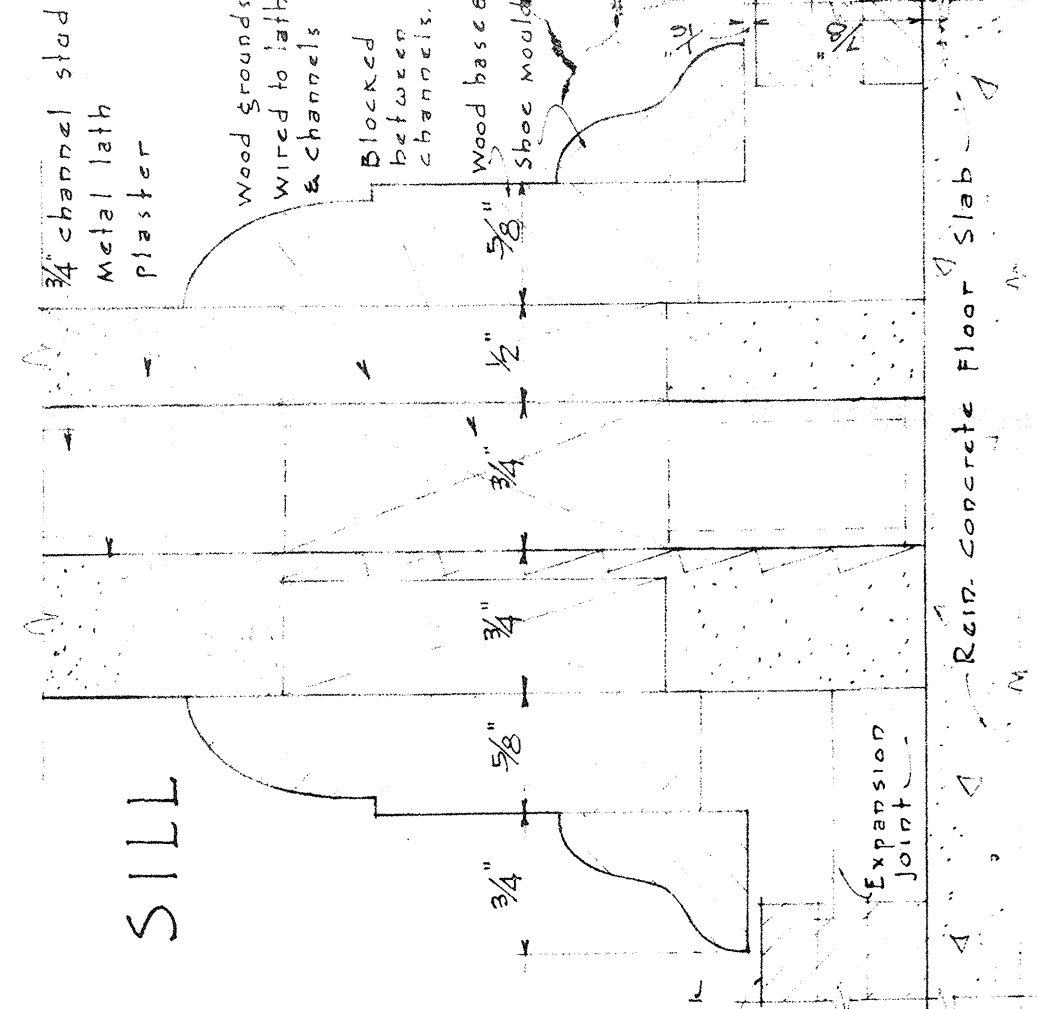
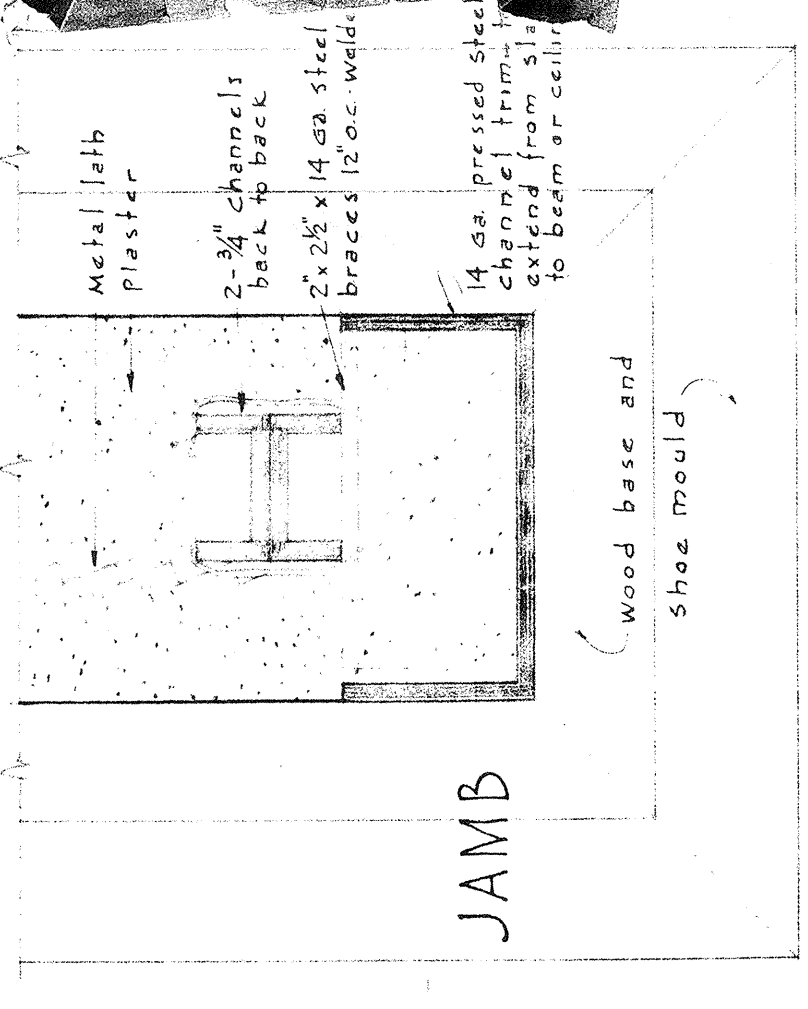
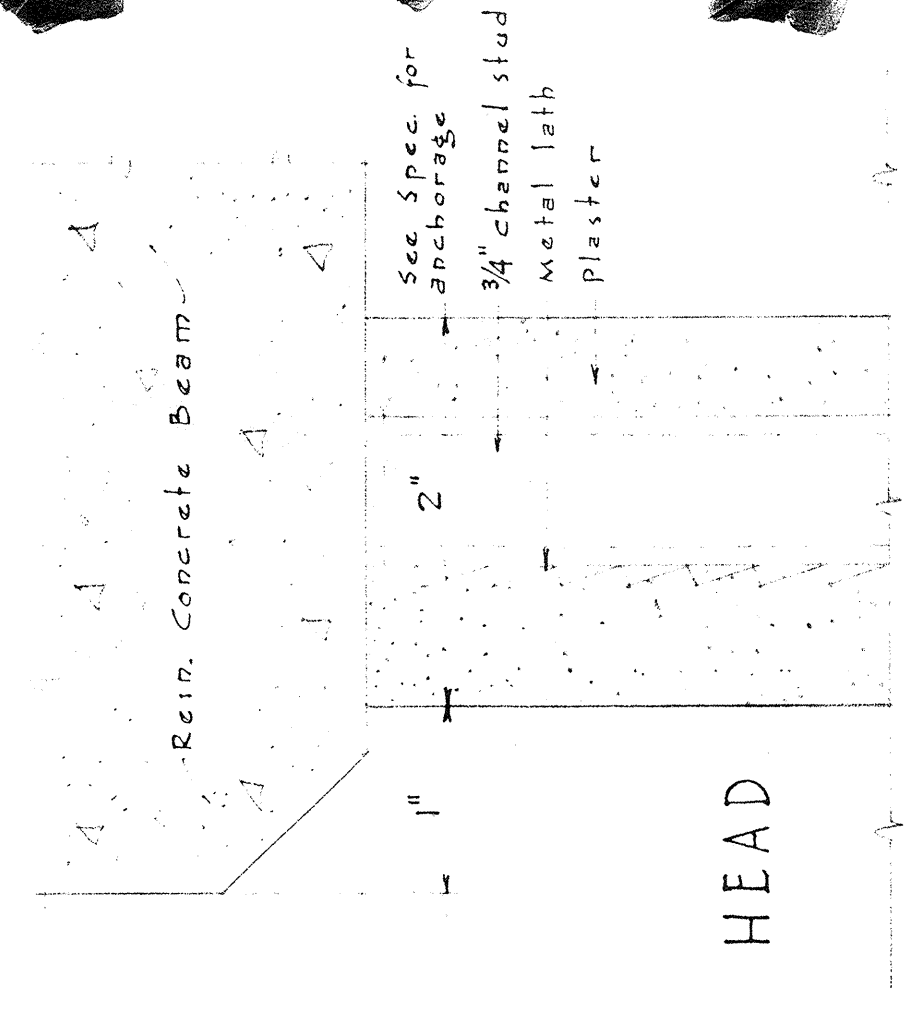
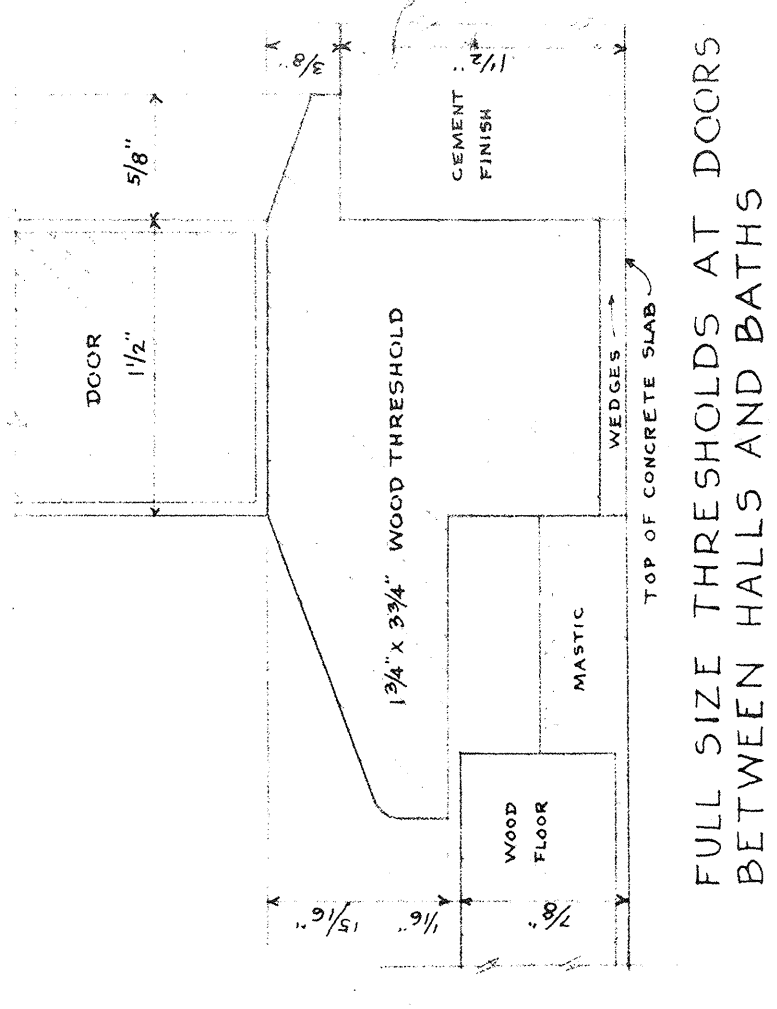


WOOD FRAME IN T.C. TILE OR BRICK PARTITION

WOOD FRAME IN SOLID PLASTER PARTITION

FRAME FOR HOLLOW METAL DOOR IN SOLID BRICK PARTITION

FULL SIZE DETAILS OF INTERIOR DOOR FRAMES



TERMINATION OF STUB WALLS AT CLOSETS & BETWEEN KITCHENS & LIVING ROOMS.

| | | | |
|--|---------|--|---------|
| SHEET TITLE | | DOOR FRAMES | |
| GONZALES GARDENS LOW RENT HOUSING PROJECT, COLUMBIA, S. C. 21 THE HOUSING AUTHORITY OF COLUMBIA, S. C. DESIGNED BY UNITED STATES HOUSING AUTHORITY | | | |
| CHECKED BY | DATE | APPROVED BY | DATE |
| H.B.S. | 9-18-39 | ADMINISTRATOR | 9-22-39 |
| REVISIONS | | APPROVED BY THE HOUSING AUTHORITY OF THE CITY OF COLUMBIA, S. C. | |
| | | JAMES B. LINDQUIST ARCHITECT | |
| | | SHEET NO. A 19 | |