
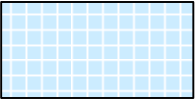
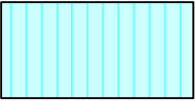





SOUTH CAROLINA
DEPARTMENT OF LABOR, LICENSING AND REGULATION
ORGANIZATIONAL CHART

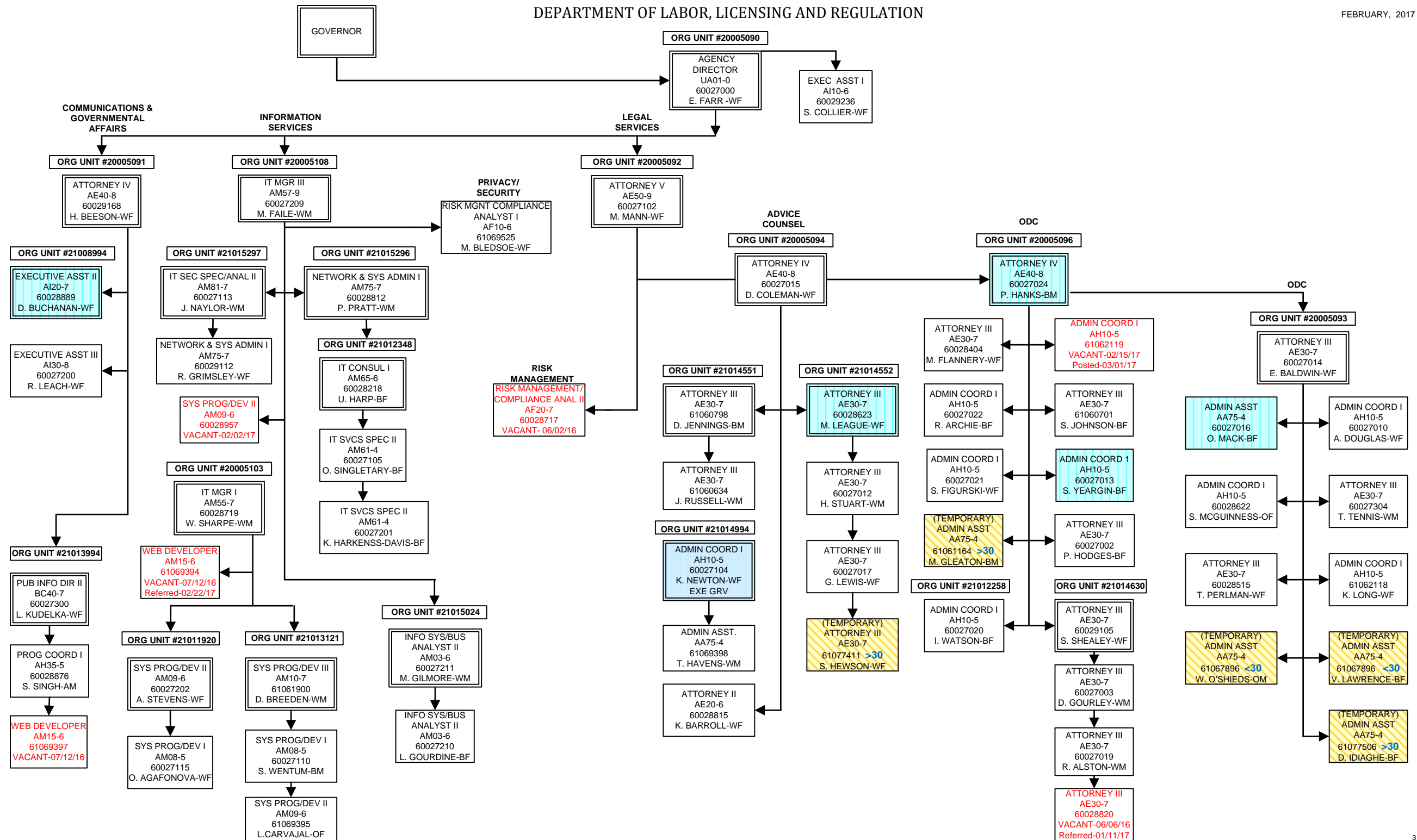
FEBRUARY 2017

SOUTH CAROLINA
DEPARTMENT OF LABOR, LICENSING AND REGULATION
ORGANIZATIONAL CHARTS

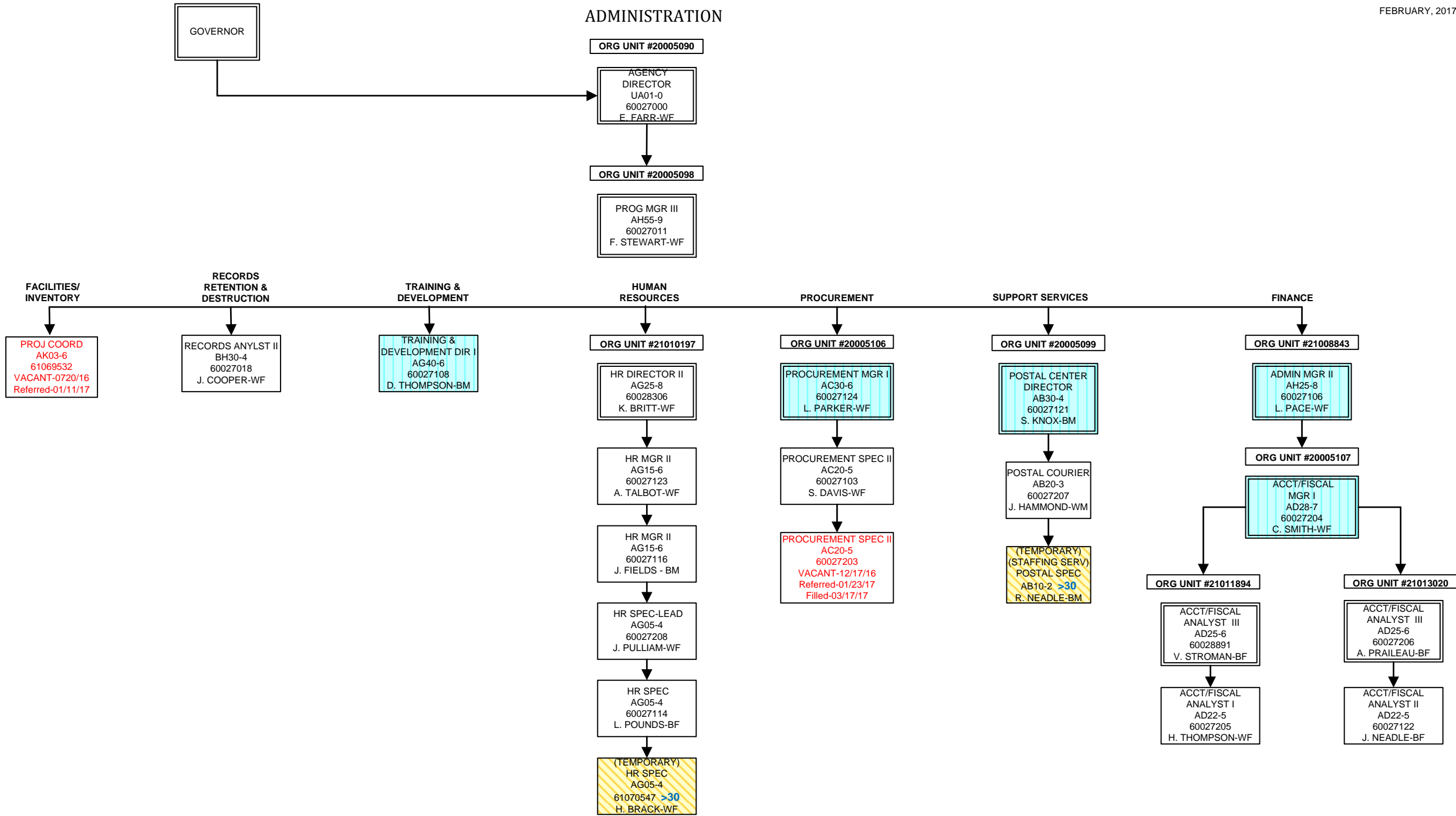
Pink Diamond		TERI Employee
Light Blue Square		Employee returned after TERI or Retirement
Turquoise Vertical Stripe		Employee eligible to retire within 5 years by service or age
White Solid Red Letters		Vacant Position-Vacancy Date
Yellow Diagonal Stripe		Temporary Employee
Dark Pink Outline		Borrowed position

DEPARTMENT OF LABOR, LICENSING AND REGULATION

FEBRUARY, 2017

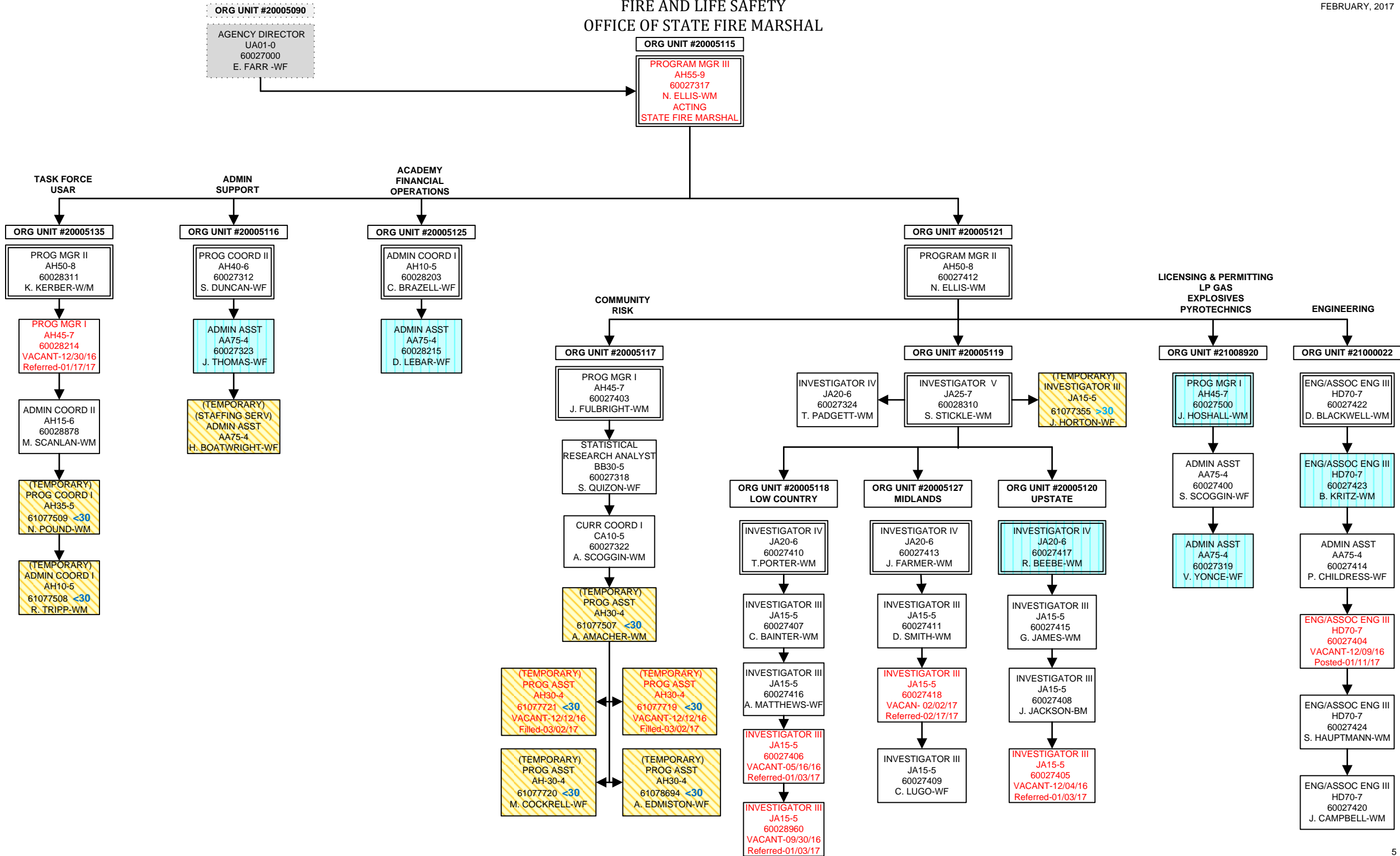


ADMINISTRATION



FIRE AND LIFE SAFETY
OFFICE OF STATE FIRE MARSHAL

FEBRUARY, 2017



FIRE AND LIFE SAFETY
FIRE ACADEMY

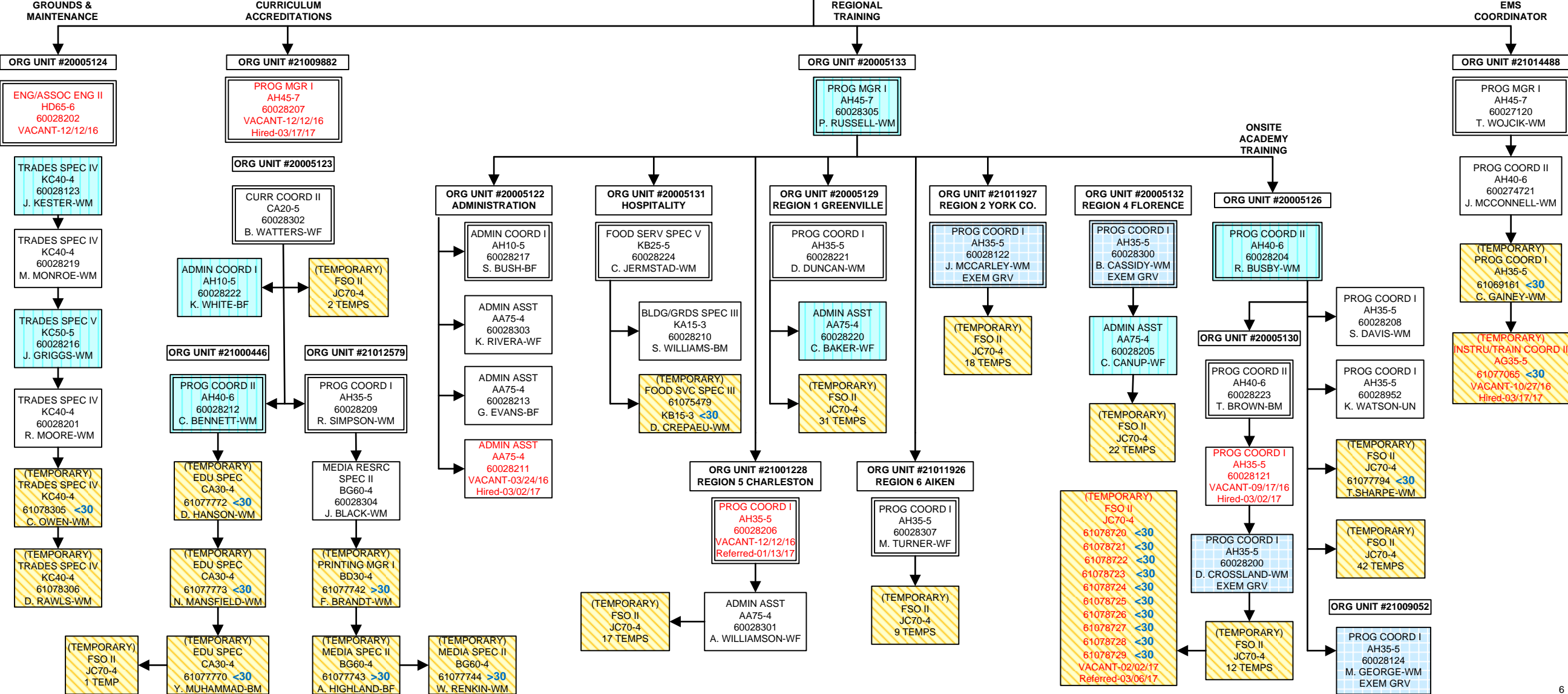
FEBRUARY, 2017

ORG UNIT #20005115

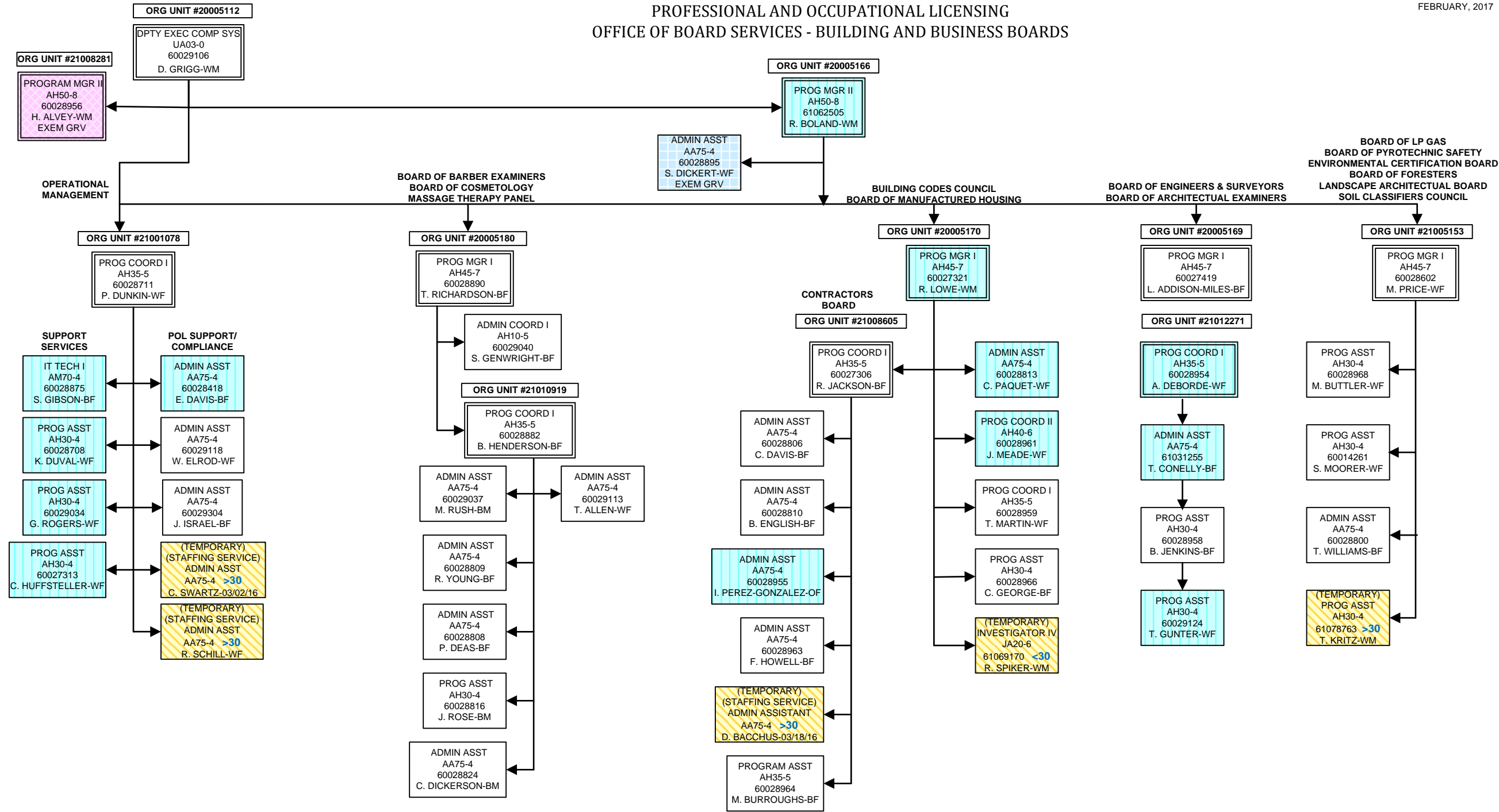
PROGRAM MGR III
AH55-9
60027317
N. ELLIS-WM
ACTING
STATE FIRE MARSHAL

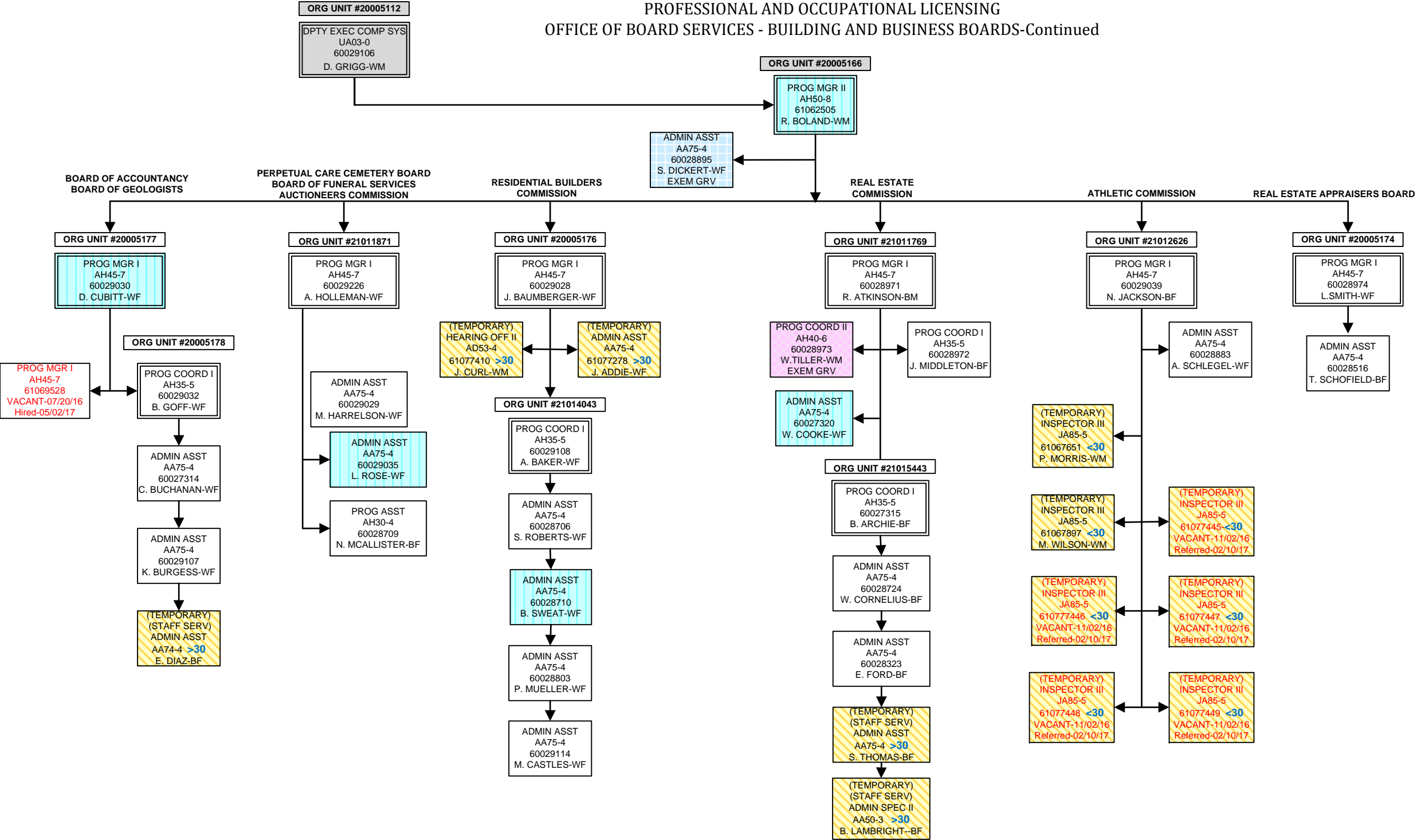
ORG UNIT #20005128

ACTING
PROG MGR II
AH50-8
60028805
P. RUSSELL

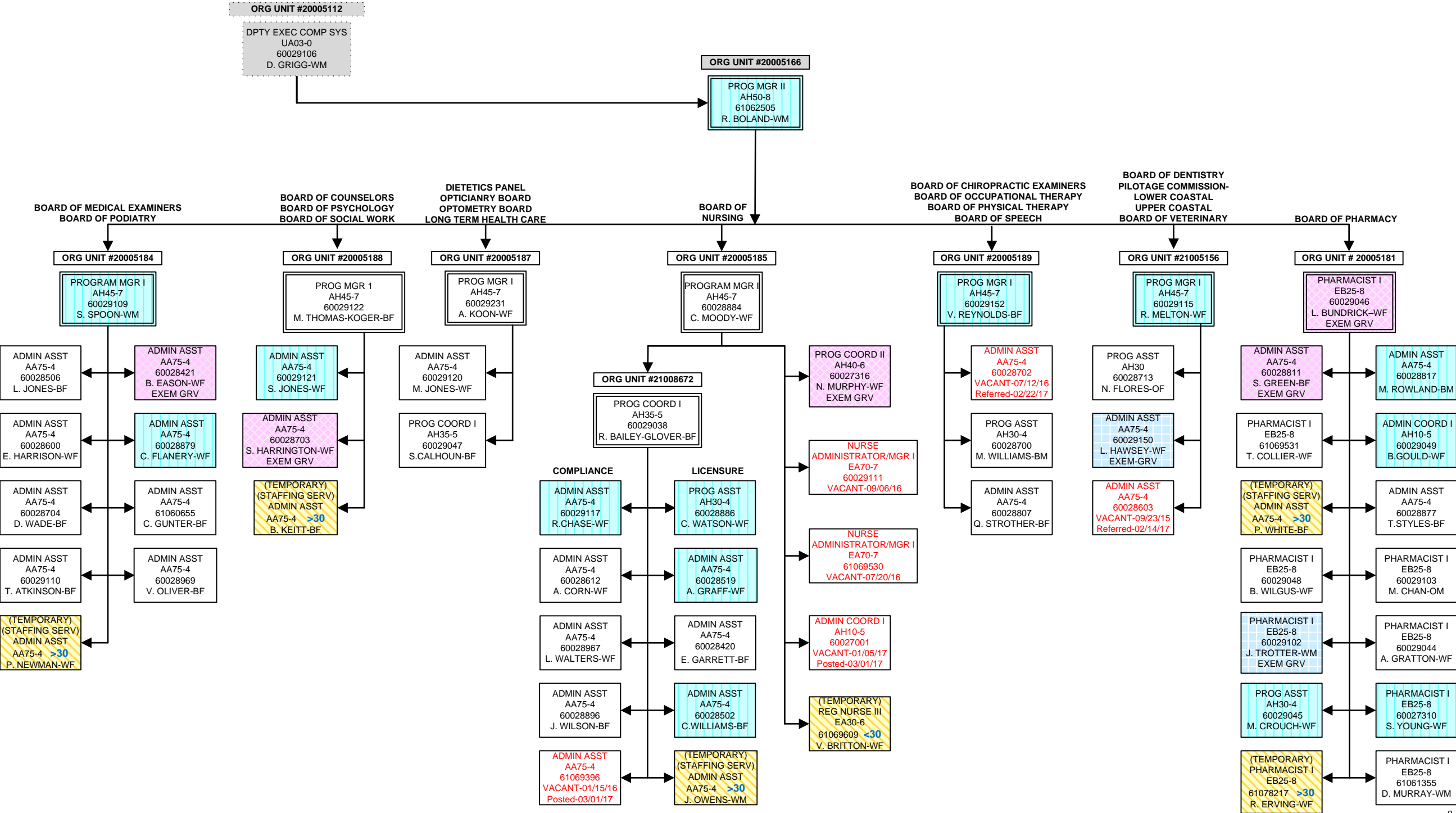


PROFESSIONAL AND OCCUPATIONAL LICENSING
OFFICE OF BOARD SERVICES - BUILDING AND BUSINESS BOARDS



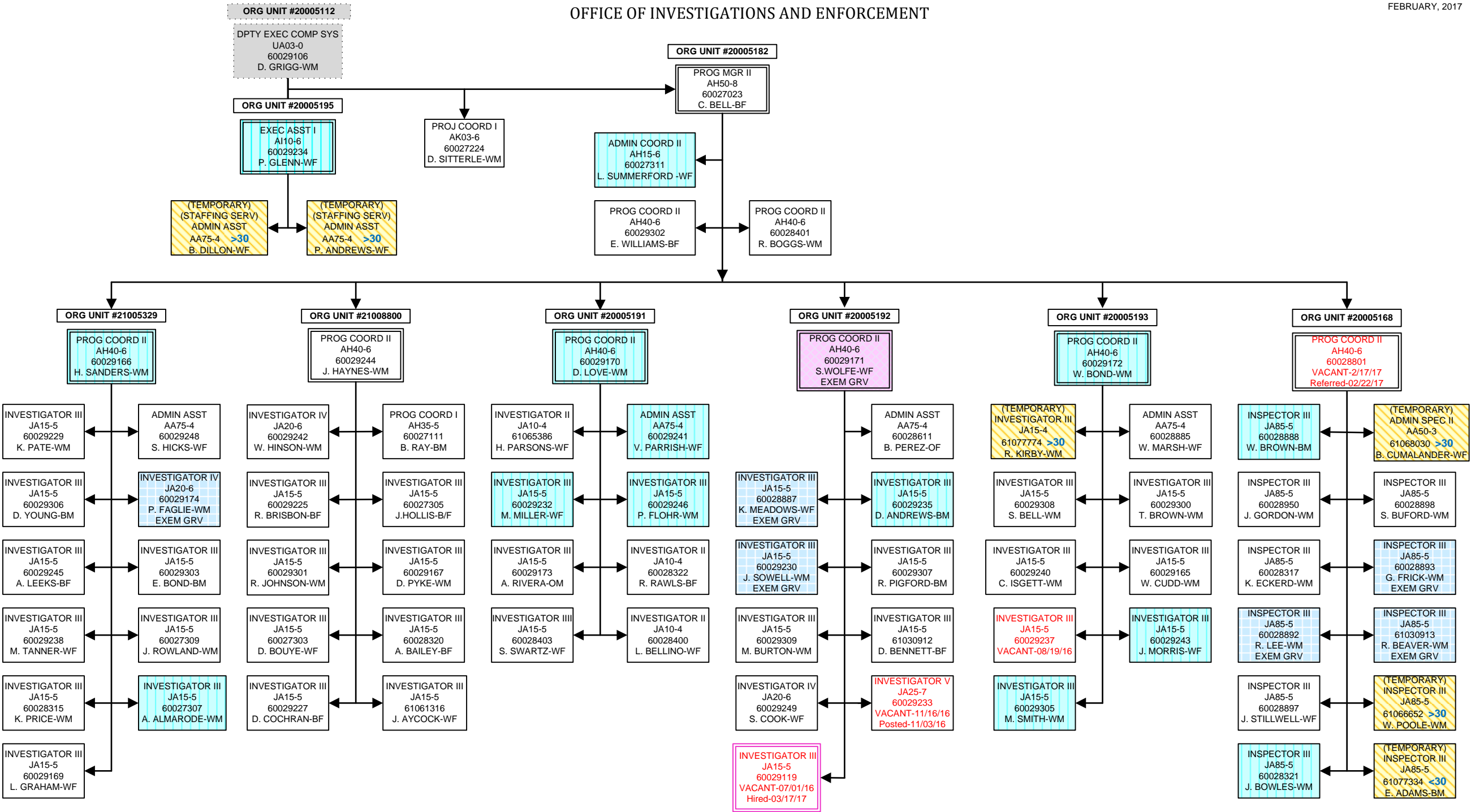


OFFICE OF BOARD SERVICES
HEALTH AND MEDICALLY RELATED BOARDS



OFFICE OF INVESTIGATIONS AND ENFORCEMENT

FEBRUARY, 2017



DIVISION OF LABOR

