



Cultural Resources Project Screening Form

File Number: PIN: Route: County:

Project Name:

Type 1: Resurfacing, installation of fencing, signs, pavement markings, traffic signals, passenger shelters, railroad warning devices, installation of rumble strips, and landscaping

Project Type

Type 2: Bridge replacements on alignment, construction of bicycle/pedestrian facilities, and intersection improvements

Type 3: Projects that do not fall into Type 1 and Type 2 categories (e.g. road widening)

Comments

The project consists of the replacement of the US 29 bridge over Devil Fork Creek in Anderson County. The bridge alignment will be shifted slightly north. New right-of-way (ROW) is required. The area of potential effects (APE) is approximately 2400 ft long and up to 190 ft wide. The architectural APE was a 300 ft buffer around the archaeological APE. Background review indicated one previously recorded cultural resource, a historic bridge (Asset No. 593), was present within the APE. The resource was previously determined not NRHP eligible. A large portion of the eastern half of the APE falls within an area previously surveyed by SCDOT in 1994. A cultural resources survey was conducted on April 3, 2019 and consisted of a pedestrian reconnaissance of the APE augmented by shovel test pits (STPs) at 30 meter intervals. A total of 18 STPs were excavated. Ten potential STP locations were examined but not excavated due to ground disturbance or slope. All STPs were negative. The previously surveyed area was visually inspected but not shovel tested. Two historic resources were recorded (Sites 3506 and 3507). Both were assessed as not NRHP eligible. No further investigations are recommended. No historic properties will be affected.

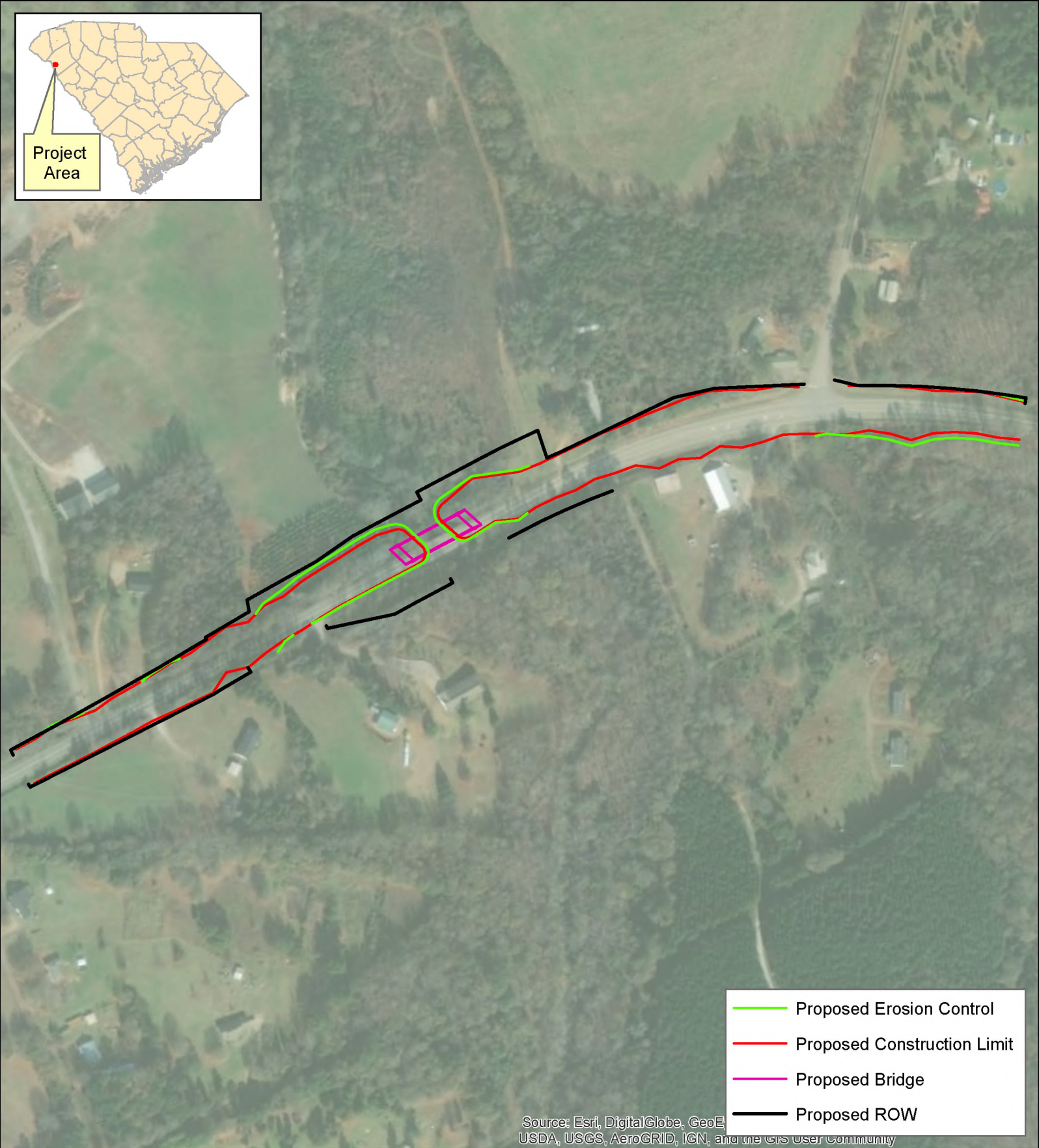
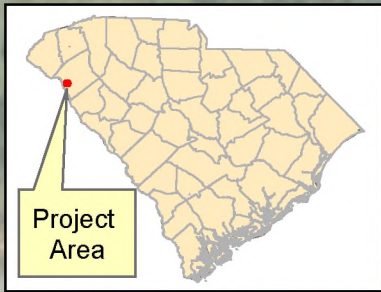
Effect Determination:

*SHPO consultation is required for all Type 3 projects and any project with a No Adverse or Adverse Effect Determination.

This screening form was developed to satisfy documentation requirements for Type I and Type II projects under a Programmatic Agreement between the Federal Highway Administration, the South Carolina State Historic Preservation Office, the US Army Corps of Engineers, and the South Carolina Department of Transportation. For Type I and Type II projects that have no effect on historic properties, the completion of this screening form with supporting documentation (e.g. ArchSite Map) provides evidence of FHWA and SCDOT's compliance with Section 106 of the National Historic Preservation Act.

Prepared by:

Review Date:



Source: Esri, DigitalGlobe, GeoEye, USDA, USGS, AeroGRID, IGN, and the GIS User Community

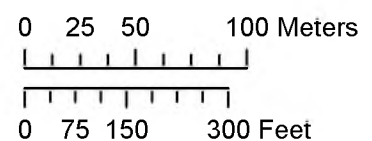
- Proposed Erosion Control
- Proposed Construction Limit
- Proposed Bridge
- Proposed ROW

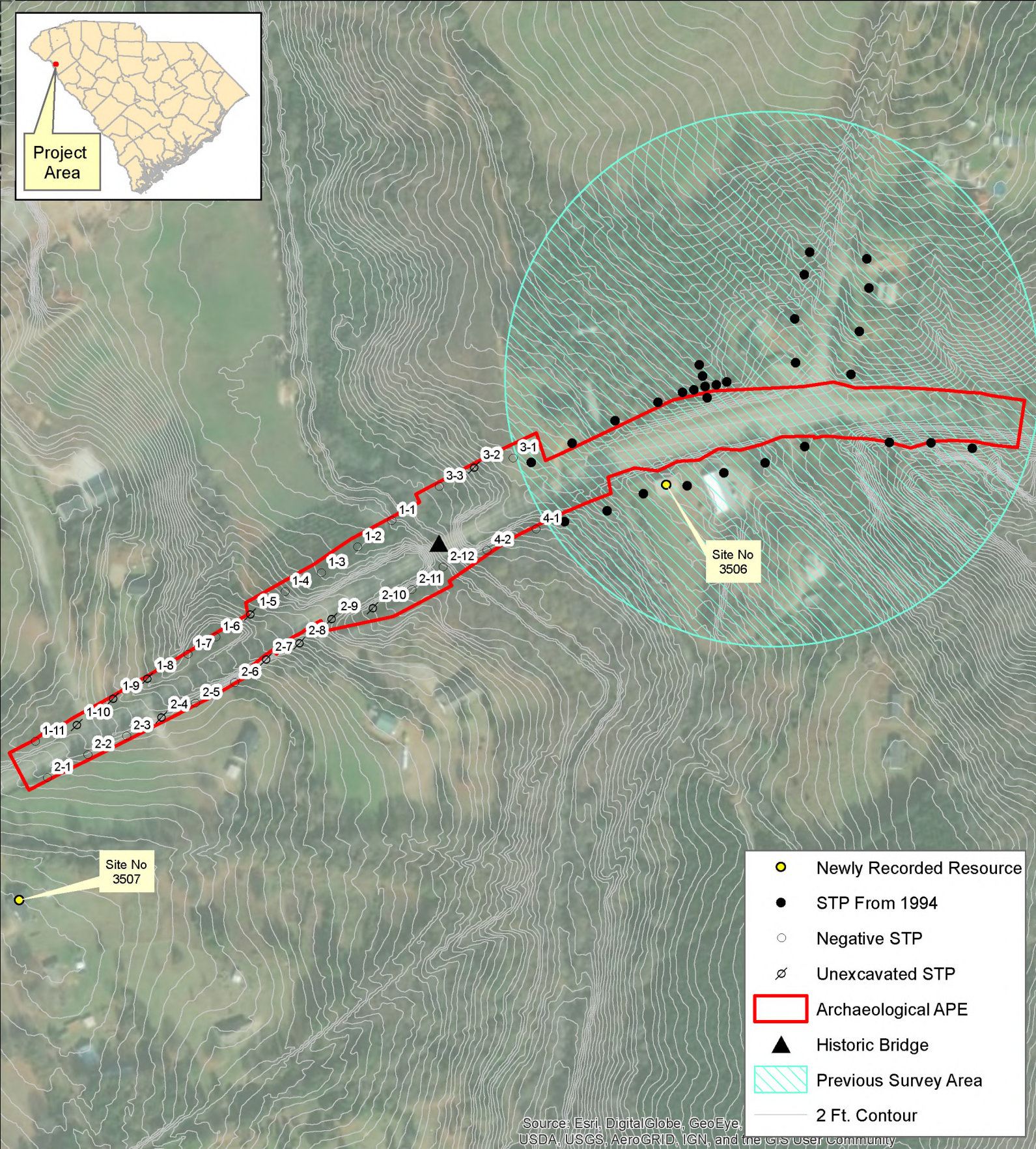
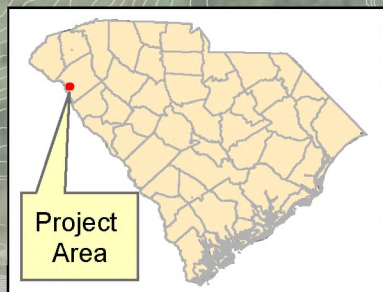
Date:
April 9, 2019



Anderson County
Proposed Bridge
Replacement
CULTURAL RESOURCES
SURVEY OF US-29 BRIDGE
REPLACEMENT OVER
DEVIL FORK CREEK

Project ID: P030387





Date:
April 9, 2019



**Anderson County
Proposed Bridge
Replacement**

**CULTURAL RESOURCES
SURVEY OF US 29 BRIDGE
REPLACEMENT OVER
DEVIL FORK CREEK**

Project ID: P030387

