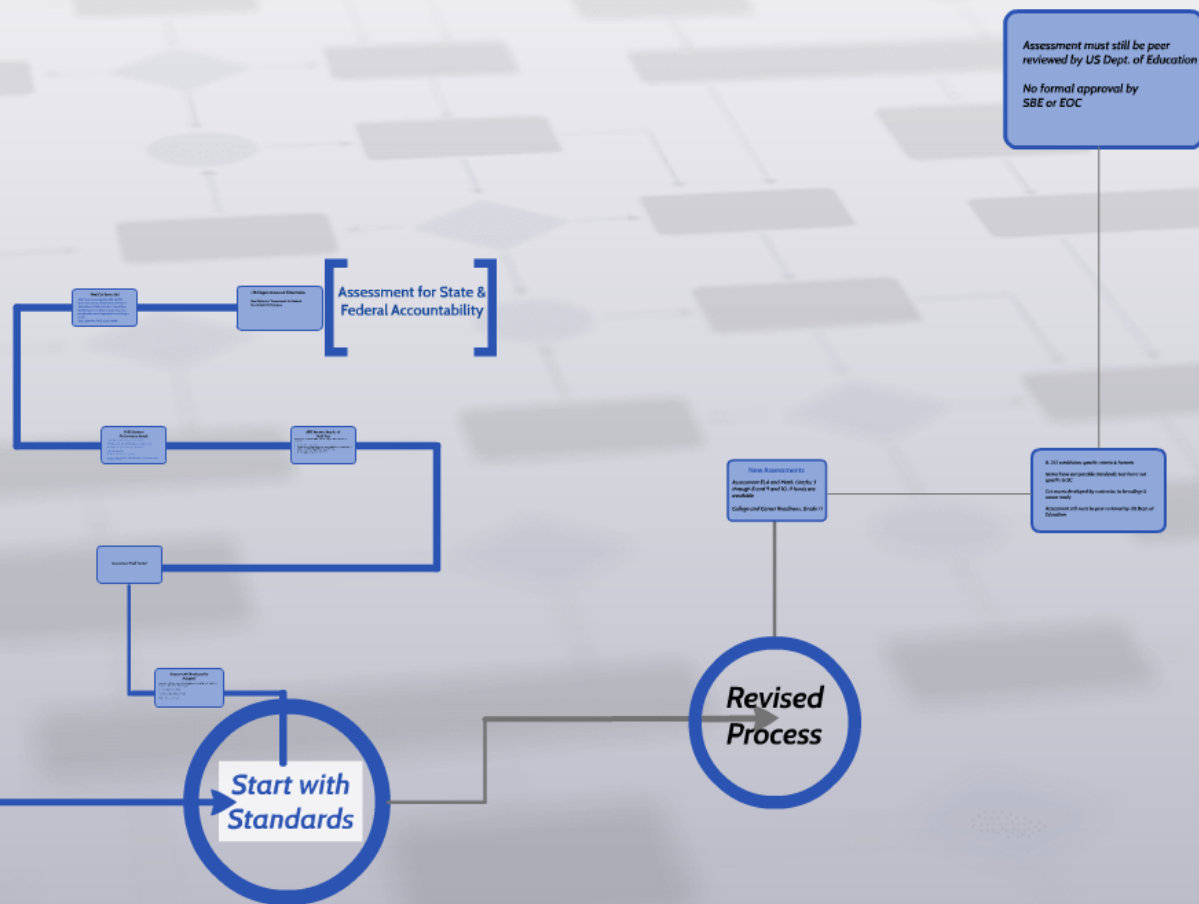
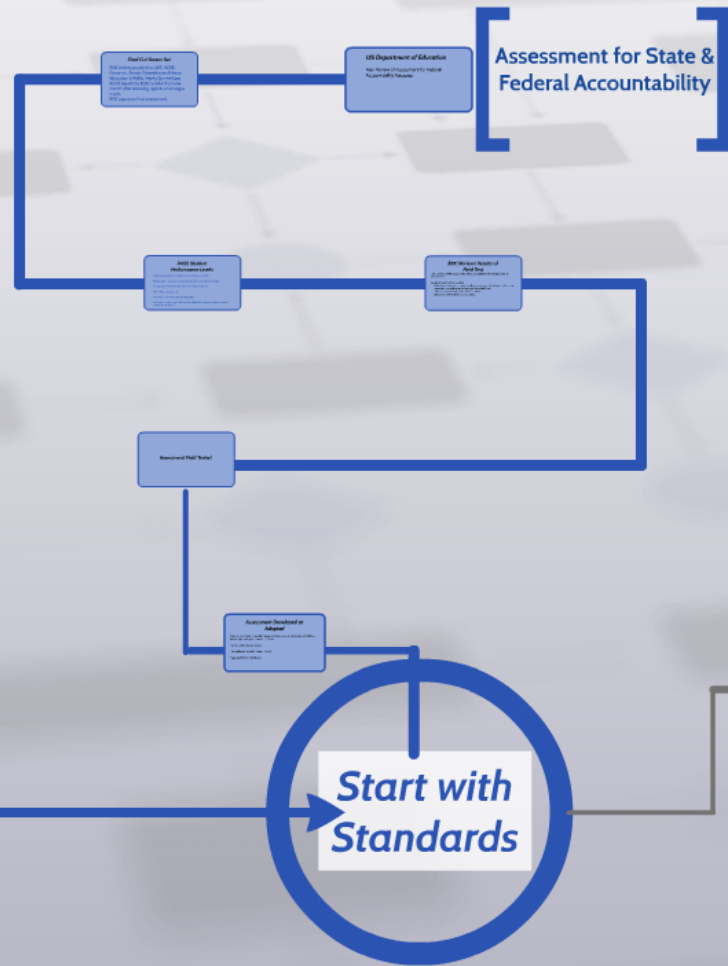


Assessment Process



Assessment Process





***Start with
Standards***

Assessment Developed or Adopted

State Board of Education (SBE) through SC Department of Education (SCDE) has historically developed its own assessment

First was PACT (2002-2008)

Then followed by PASS (2009 - 2014)

Paper and Pencil, fixed forms

Assessment Field Tested

EOC Reviews Results of Field Test

Looks at level of difficulty, validity of test, and ability to differentiate levels of achievement

Conducts Bookmarking meeting

Educators presented test questions (by grade & subject level) and ordered from easiest to most difficult according to results of field test

Then asked to visualize a "borderline" student.

Collective judgments then set cut scores

PASS Student Performance Levels

Student Demonstrates Performance at a Grade Level That:

Exemplary 5 - Consistently exceeds expectations for a typical student

Exemplary 4 - Exceeds expectations for a typical student

Met - Meets expectations

Not Met 2 - Sometimes meets expectations

Not Met 1 - There is significant need for additional instructional opportunities to achieve the Met level.

Final Cut Scores Set

EOC review provided to SBE, SCDE, Governor, Senate Education and House Education & Public Works Committees. SCDE reports to EOC no later than one month after receiving reports on changes made.

EOC approves final assessment.

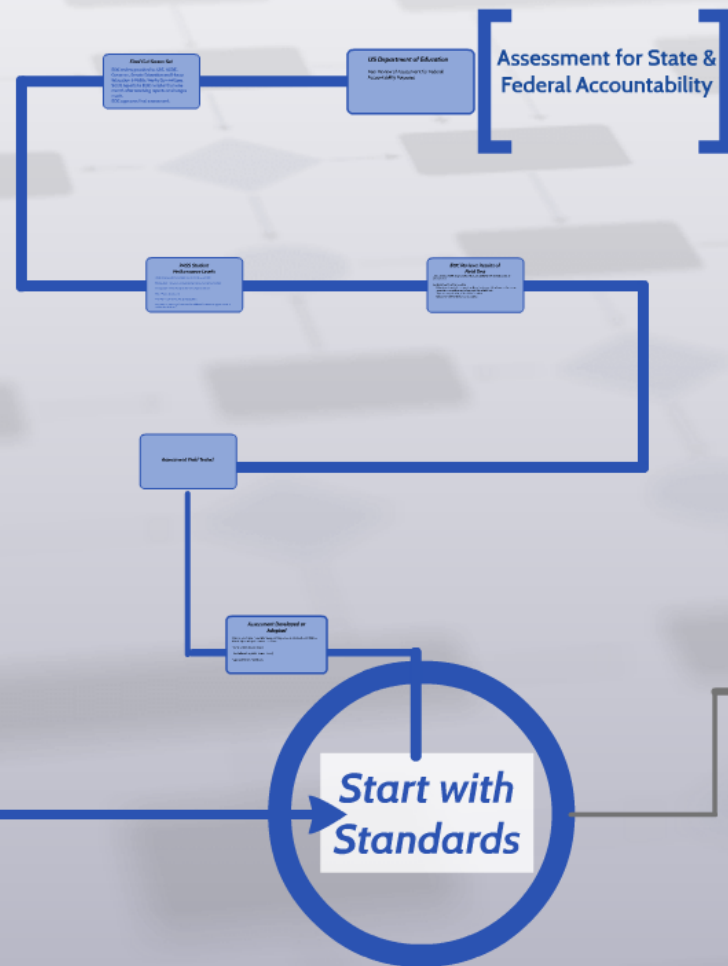
US Department of Education

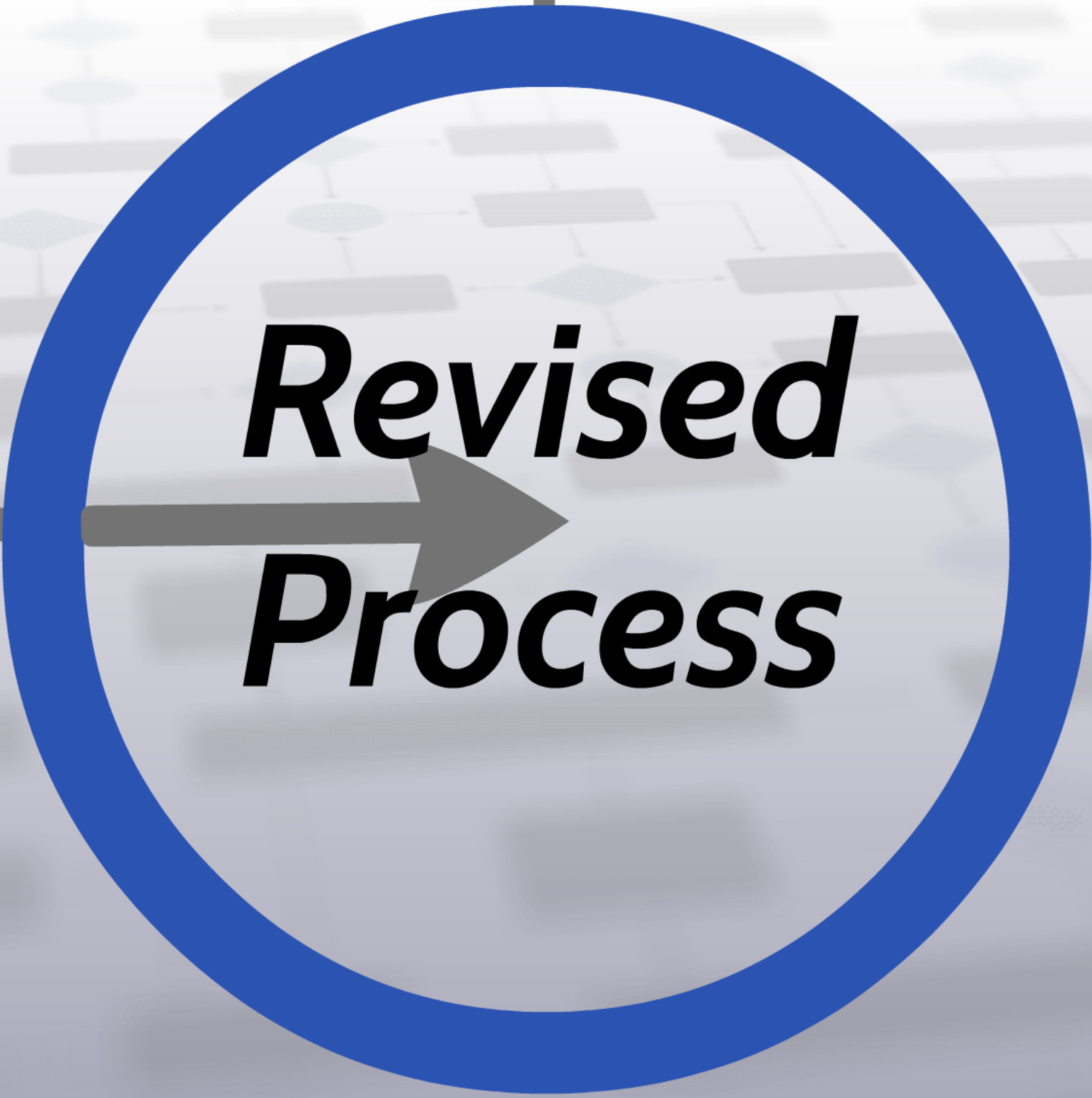
Peer Review of Assessment for Federal
Accountability Purposes

A faint, light blue flowchart is visible in the background, featuring various rectangular and diamond-shaped nodes connected by lines, suggesting a process or organizational structure.

Assessment for State & Federal Accountability

Assessment Process





***Revised
Process***

New Assessments

Assessment ELA and Math, Grades 3 through 8 and 9 and 10, if funds are available

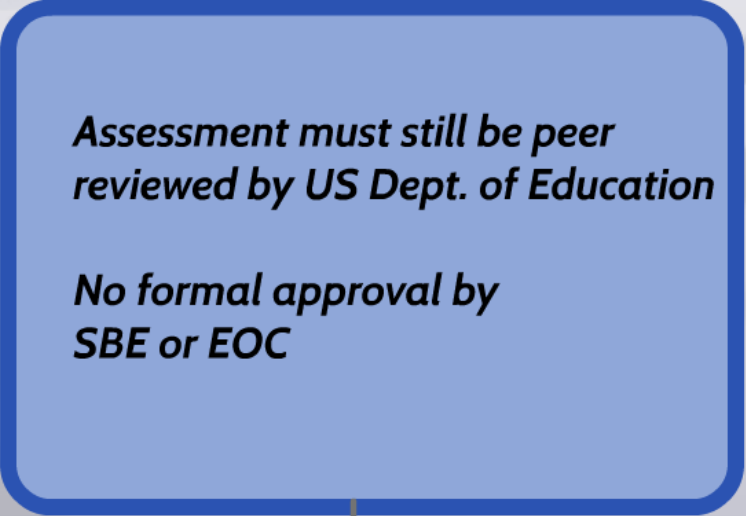
College and Career Readiness, Grade 11

R. 252 establishes specific criteria & formats

States have comparable standards; test items not specific to SC

Cut scores developed by contractor to be college & career ready

Assessment still must be peer reviewed by US Dept. of Education



*Assessment must still be peer
reviewed by US Dept. of Education*

*No formal approval by
SBE or EOC*