

SOUTH CAROLINA  
DEPARTMENT OF LABOR, LICENSING AND REGULATION  
ORGANIZATIONAL CHART

DECEMBER, 2016

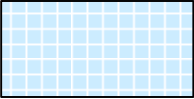
SOUTH CAROLINA  
DEPARTMENT OF LABOR, LICENSING AND REGULATION  
ORGANIZATIONAL CHARTS

Pink Diamond



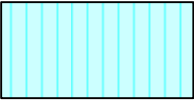
**TERI Employee**

Light Blue Square



**Employee returned after TERI  
or Retirement**

Turquoise Vertical Stripe



**Employee eligible to retire  
within 5 years by service  
or age**

White Solid Red Letters



**Vacant Position-Vacancy  
Date**

Yellow Diagonal Stripe



**Temporary Employee**

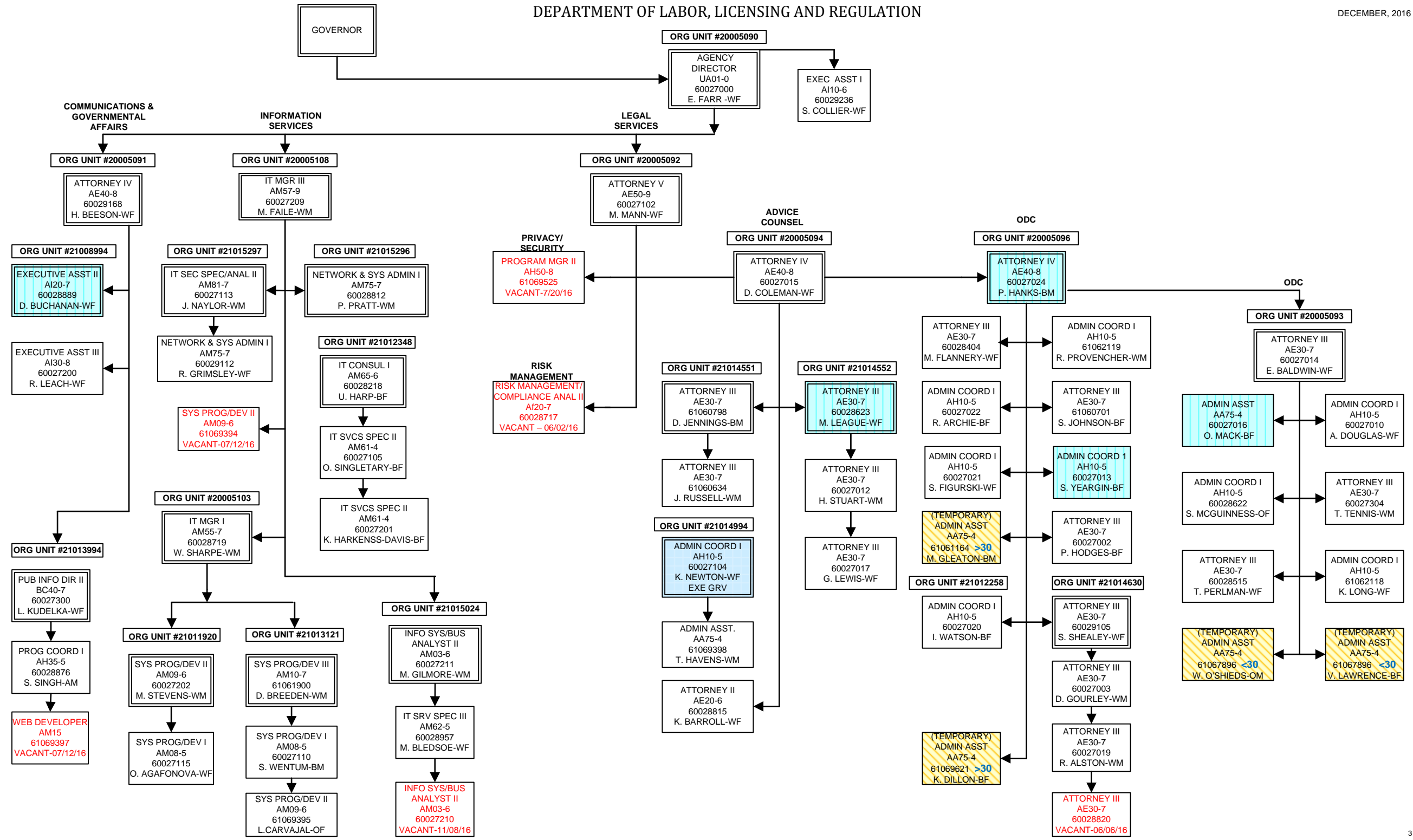
Dark Pink Outline

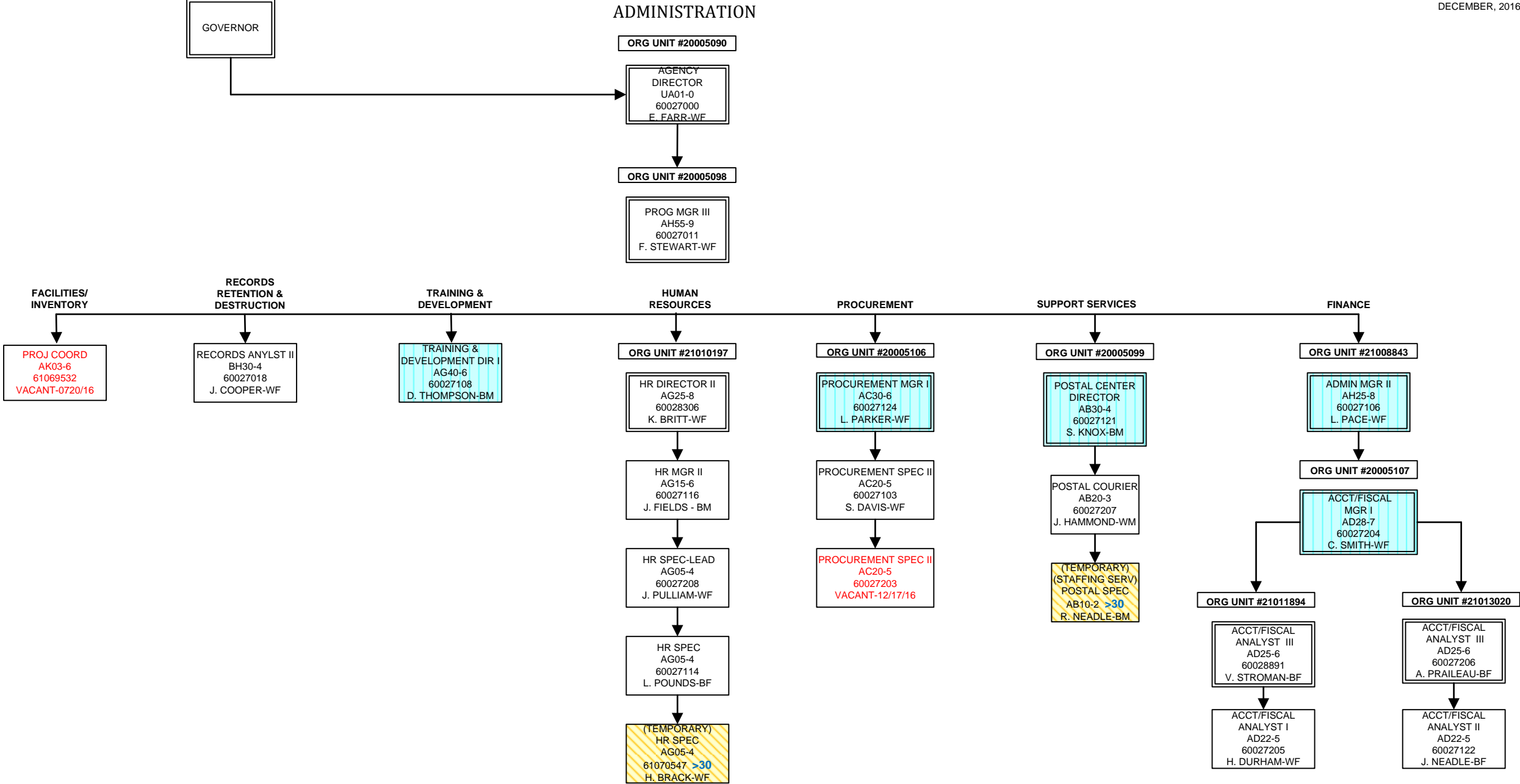


**Borrowed position**

DEPARTMENT OF LABOR, LICENSING AND REGULATION

DECEMBER, 2016

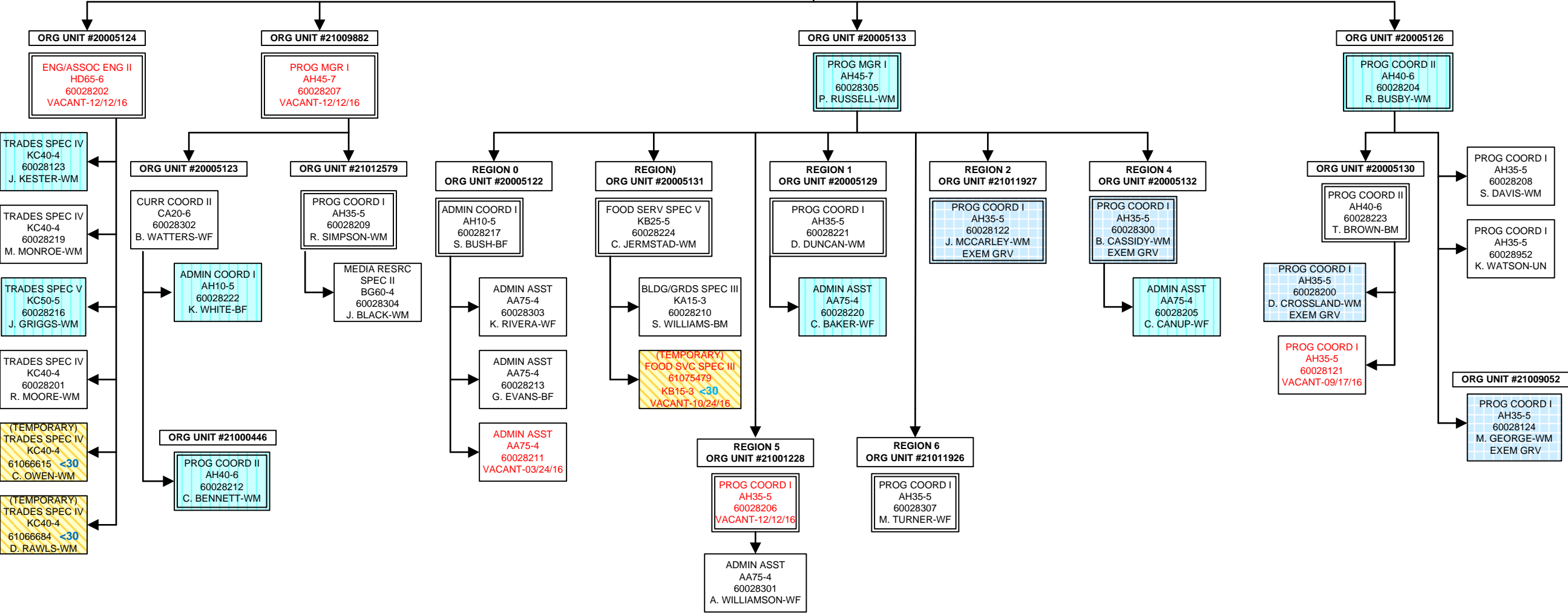




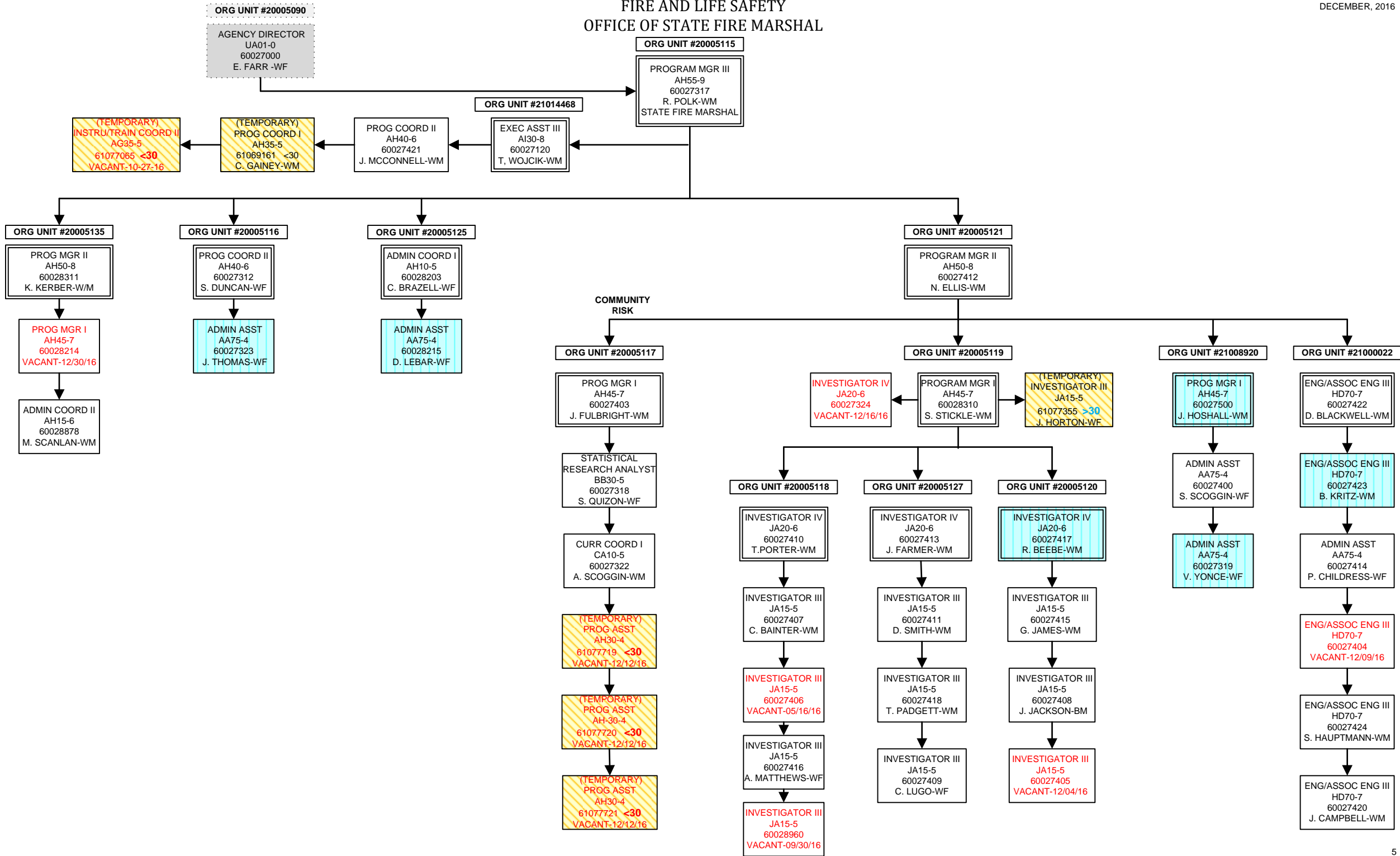
FIRE AND LIFE SAFETY  
FIRE ACADEMY

ORG UNIT #20005115  
  
PROGRAM MGR III  
AH55-9  
60027317  
R. POLK-WM  
STATE FIRE MARSHAL

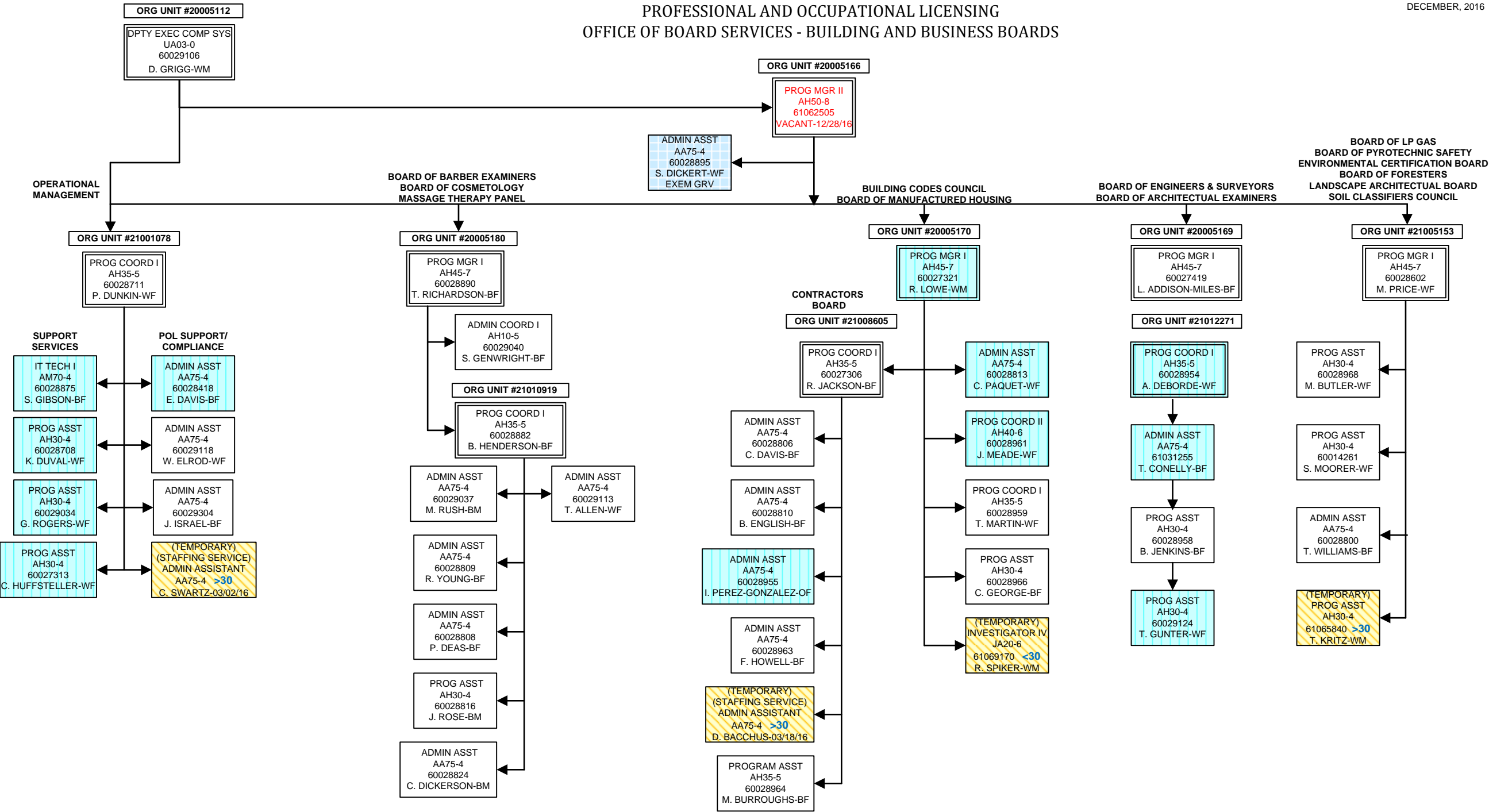
ORG UNIT #20005128  
  
PROG MGR II  
AH50-8  
60028805  
VACANT-7/2/16



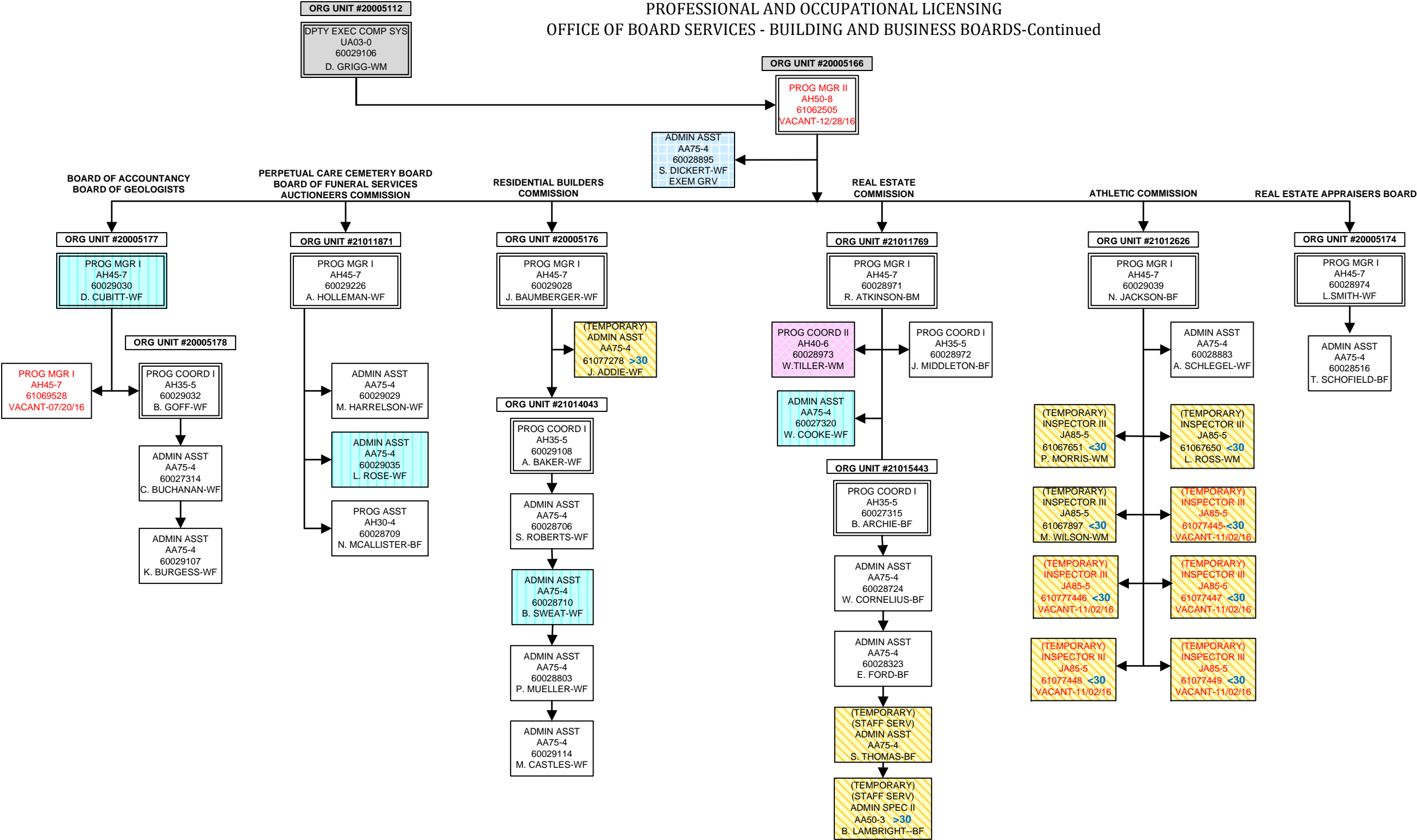
FIRE AND LIFE SAFETY  
OFFICE OF STATE FIRE MARSHAL



PROFESSIONAL AND OCCUPATIONAL LICENSING  
OFFICE OF BOARD SERVICES - BUILDING AND BUSINESS BOARDS

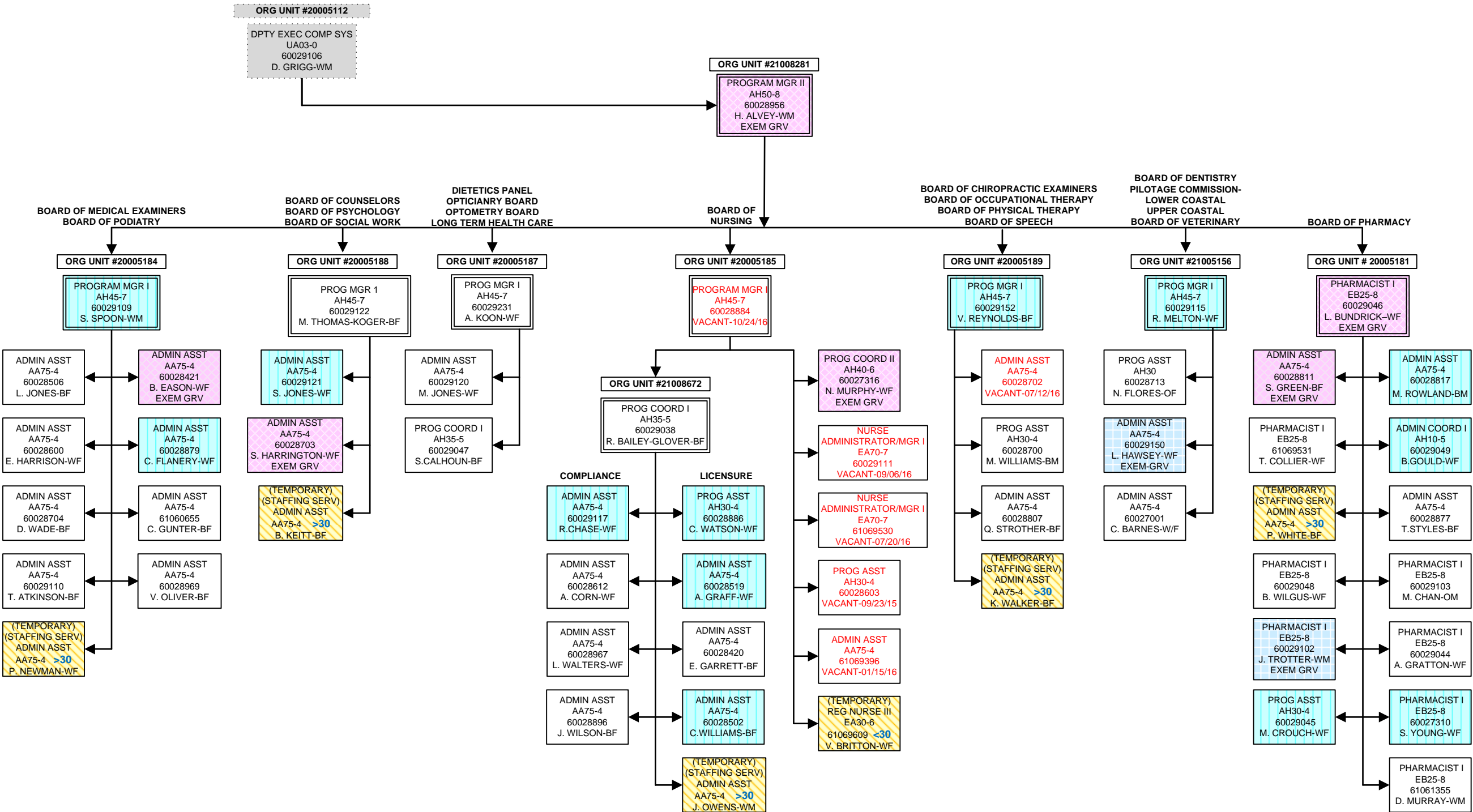


PROFESSIONAL AND OCCUPATIONAL LICENSING  
OFFICE OF BOARD SERVICES - BUILDING AND BUSINESS BOARDS-Continued

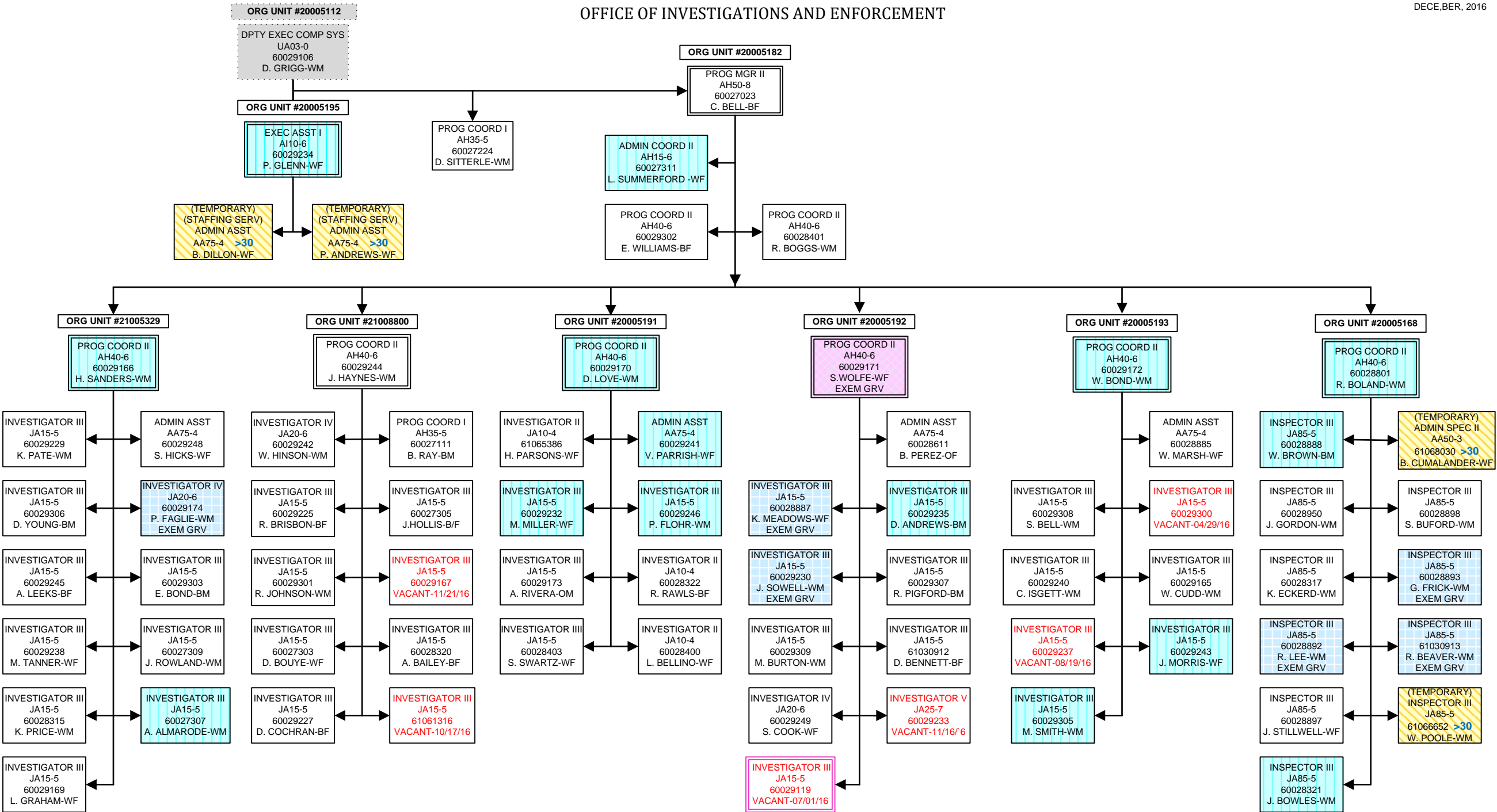




OFFICE OF BOARD SERVICES  
HEALTH AND MEDICALLY RELATED BOARDS



OFFICE OF INVESTIGATIONS AND ENFORCEMENT



DIVISION OF LABOR

