
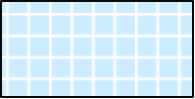
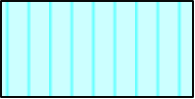






SOUTH CAROLINA
DEPARTMENT OF LABOR, LICENSING AND REGULATION
ORGANIZATIONAL CHART

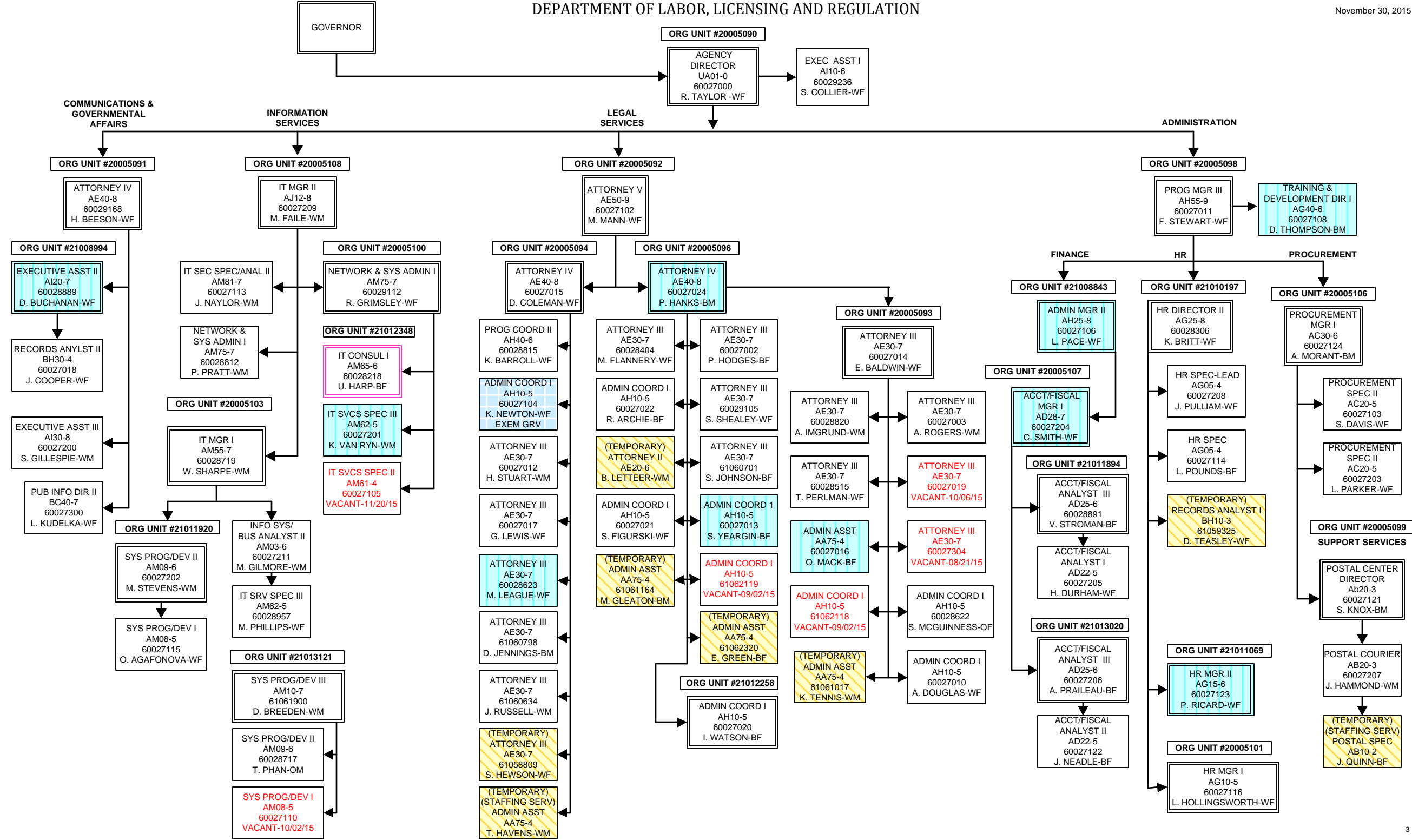
NOVEMBER 30, 2015

SOUTH CAROLINA
DEPARTMENT OF LABOR, LICENSING AND REGULATION
ORGANIZATIONAL CHARTS

Pink Diamond		TERI Employee
Light Blue Square		Employee returned after TERI or Retirement
Turquoise Vertical Stripe		Employee eligible to retire within 5 years by service or age
White Solid Red Letters		Vacant Position-Vacancy Date
Yellow Diagonal Stripe		Temporary Employee
Grayed out		Previously counted position
Dark Pink Outline		Borrowed position

DEPARTMENT OF LABOR, LICENSING AND REGULATION

November 30, 2015



FIRE AND LIFE SAFETY
OFFICE OF STATE FIRE MARSHAL

November 30, 2015

ORG UNIT #20005090
AGENCY DIRECTOR
UA01-0
60027000
R. TAYLOR -WF

ORG UNIT #20005115
PROGRAM MGR III
AH55-9
60027317
R. POLK-WM
STATE FIRE MARSHAL

PROG MGR II
AH50-8
60027120
VACANT-12/17/14

COMMUNITY
RISK

BOARD OF LP GAS
BOARD OF PYROTECHNIC SAFETY

ORG UNIT #20005135
PROG MGR II
AH50-8
60028311
VACANT-11/02/15

ORG UNIT #20005117
PROG MGR I
AH45-7
60027403
T. WOJCIK-WM

ORG UNIT #20005116
PROG COORD II
AH40-6
60027312
S. DUNCAN-WF

ORG UNIT #20005125
ADMIN COORD I
AH10-5
60028203
C. BRAZELL-WF

ORG UNIT #20005121
PROG MGR II
AH50-8
60027412
VACANT-08/31/15

ORG UNIT #20005119
PROGRAM MGR I
AH45-7
60028310
S. STICKLE-WM

ORG UNIT #21008920
PROG MGR I
AH45-7
60027500
J. HOSHALL-WM

ORG UNIT #21000022
ENG/ASSOC ENG III
HD70-7
60027422
D. BLACKWELL-WM

(TEMPORARY)
PROG COORD I
AH35-5
61057770
R. TRIPP-WM

PROG COORD II
AH40-6
60027324
VACANT-11/02/15

(TEMPORARY)
PROG COORD I
AH35-5
60157769
B. RHODES-WM

ADMIN COORD II
AH15-6
60028878
M. SCANLAN-WM

(TEMPORARY)
PROG COORD I
AH35-5
61057977
E. WEINSTEIN-WM

(TEMPORARY)
PROG COORD I
AH35-5
61057741
W. ALEXANDER-A/M

(TEMPORARY)
PROG COORD I
AH35-5
61061744
N. POUND-WM

STATISTICAL
RESEARCH ANALYST
BB30-5
60027318
VACANT-10/16/15

CURR COORD I
CA10-5
60027322
A. SCOGGIN-WM

(TEMPORARY)
PROG COORD
AH35-5
61060502
C. GAINEY-WM

(TEMPORARY)
EDU SPEC
CA30-4
61057196
E. MODRZYNSKI-WM

(TEMPORARY)
PROG ASST
AH30-4
61060922
A. AMACHER-WM

(TEMPORARY)
FSO II
JC70-4
2 TEMPS

ADMIN ASST
AA75-4
60027323
J. THOMAS-WF

ADMIN ASST
AA75-4
60028215
D. LEBAR-WF

ORG UNIT #20005118
INVESTIGATOR IV
JA20-6
60027410
T. PORTER-WM

INVESTIGATOR III
JA15-5
60027407
C. BAINTE-WM

INVESTIGATOR III
JA15-5
60027406
VACANT-12/15/14

INVESTIGATOR III
JA15-5
60027416
A. MATTHEWS-WF

INVESTIGATOR III
JA15-5
60028960
C. OGDEN-WM

ORG UNIT #20005127
INVESTIGATOR IV
JA20-6
60027413
J. FARMER-WM

INVESTIGATOR III
JA15-5
60027411
D. SMITH-WM

INVESTIGATOR III
JA15-5
60027405
M. FOWLER-WM

INVESTIGATOR III
JA15-5
60027409
VACANT-02/18/15

ORG UNIT #20005120
INVESTIGATOR IV
JA20-6
60027417
R. BEEBE-WM

INVESTIGATOR III
JA15-5
60027415
G. JAMES-WM

INVESTIGATOR III
JA15-5
60027418
T. PADGETT-WM

INVESTIGATOR III
JA15-5
60027408
J. JACKSON-BM

INVESTIGATOR IV
JA20-6
60028214
VACANT-8/1/14

(TEMPORARY)
EDU SPEC
CA30-4
61061152
N. ELLIS-WM

ADMIN ASST
AA75-4
60027400
S. SCOGGIN-WF

ADMIN ASST
AA75-4
60027319
V. YONCE-WF

PROG COORD I
AH35-5
60027421
VACANT-3/8/14

ENG/ASSOC ENG III
HD70-7
60027423
B. KRITZ-WM

ADMIN ASST
AA75-4
60027414
P. CHILDRESS-WF

ENG/ASSOC ENG III
HD70-7
60027404
P. PATTERSON-WF

ENG/ASSOC ENG III
HD70-7
60027424
T. PENNY-WF

ENG/ASSOC ENG III
HD70-7
60027420
J. CAMPBELL-WM

FIRE AND LIFE SAFETY
FIRE ACADEMY

November 30, 2015

ORG UNIT #20005115
PROGRAM MGR III
AH55-9
60027317
R. POLK-WM
STATE FIRE MARSHAL

ORG UNIT #20005128
PROG MGR II
AH50-8
60028805
K. KERBER-WM

ORG UNIT #20005134

PROG COORD I
AH10-5
60028211
J. PRITCHETT-03/02/15

ORG UNIT #20005124
ENG/ASSOC ENG II
HD65-6
60028202
VACANT-01/02/15

ORG UNIT #21009882
TRAIN & DEV DIR I
AG40-6
60028207
R. DUNN-WM
EXEM GRV

ORG UNIT #20005133
PROG MGR I
AH45-7
60028305
P. RUSSELL-WM

ORG UNIT #20005126
PROG COORD II
AH40-6
60028204
R. BUSBY-WM

TRADES SPEC IV
KC40-4
60028123
J. KESTER-WM

TRADES SPEC IV
KC40-4
60028219
M. MONROE-WM

TRADES SPEC V
KC50-5
60028216
J. GRIGGS-WM

TRADES SPEC IV
KC40-4
60028201
R. MOORE-WM

(TEMPORARY)
TRADES SPEC IV
KC40-4
61057193
D. RAWLS-WM

(TEMPORARY)
TRADES SPEC IV
KC40-4
61058355
C. OWEN-WM

ORG UNIT #20005123
CURR COORD II
CA20-6
60028302
B. WATTERS-WF

ADMIN COORD I
AH10-5
60028222
K. WHITE-BF

(TEMPORARY)
FSO II
JC70-4
3 TEMPS

ORG UNIT #21000446
PROG COORD II
AH40-6
60028212
C. BENNETT-WM

(TEMPORARY)
ED SPEC
CA30-4
61058166
K. WATSON-BF

(TEMPORARY)
ED SPEC
CA30-4
61059954
D. HANSON-WM

ORG UNIT #21012579
PROG COORD I
AH35-5
60028209
R. SIMPSON

MEDIA RESRC
SPEC II
BG60-4
60028304
J. BLACK-WM

(TEMPORARY)
EDU SPEC
CA30-4
61058585
D. RICKELHOFF-WM

(TEMPORARY)
PRINTING MGR I
BD30-4
61041634
F. BRANDT-WM

(TEMPORARY)
MEDIA SPEC II
BG60-4
61061899
VACANT-08/31/15

REGION 0
ORG UNIT #20005122
ADMIN COORD I
AH10-5
60028217
S. BUSH-BF

ADMIN ASST
AA75-4
60028303
K. RIVERA-WF

ADMIN ASST
AA75-4
60028213
G. EVANS-BF

REGION)
ORG UNIT #20005131
FOOD SERV SPEC V
KB25-5
60028224
C. JERMSTAD-WM

BLDG/GRDS SPEC III
KA15-3
60028210
S. WILLIAMS-BM

REGION 1
ORG UNIT #20005129
PROG COORD I
AH35-5
60028221
D. DUNCAN-WM

ADMIN ASST
AA75-4
60028220
C. BAKER-WF

(TEMPORARY)
FSO II
JC70-4
51 TEMPS

REGION 5
ORG UNIT #21001228
PROG COORD II
AH40-6
60028206
B. TURNER-WM

ADMIN ASST
AA75-4
60028301
A. WILLIAMSON-WF

(TEMPORARY)
FSO II
JC70-4
26 TEMPS

REGION 2
ORG UNIT #21011927
PROG COORD I
AH35-5
60028122
J. MCCARLEY-WM
EXEM GRV

(TEMPORARY)
FSO II
JC70-4
3 TEMPS

REGION 4
ORG UNIT #20005132
PROG COORD I
AH35-5
60028300
B. CASSIDY-WM
EXEM GRV

ADMIN ASST
AA75-4
60028205
C. CANUP-WF

(TEMPORARY)
FSO II
JC70-4
34 TEMPS

REGION 6
ORG UNIT #21011926
PROG COORD I
AH35-5
60028307
M. TURNER-WF

(TEMPORARY)
FSO II
JC70-4
47 TEMPS

ORG UNIT #20005130
PROG COORD II
AH40-6
60028223
T. BROWN-BM

PROG COORD I
AH35-5
60028200
D. CROSSLAND-WM
EXEM GRV

PROG COORD I
AH35-5
60028121
VACANT-08/07/15

(TEMPORARY)
FSO II
JC70-4
19 TEMPS

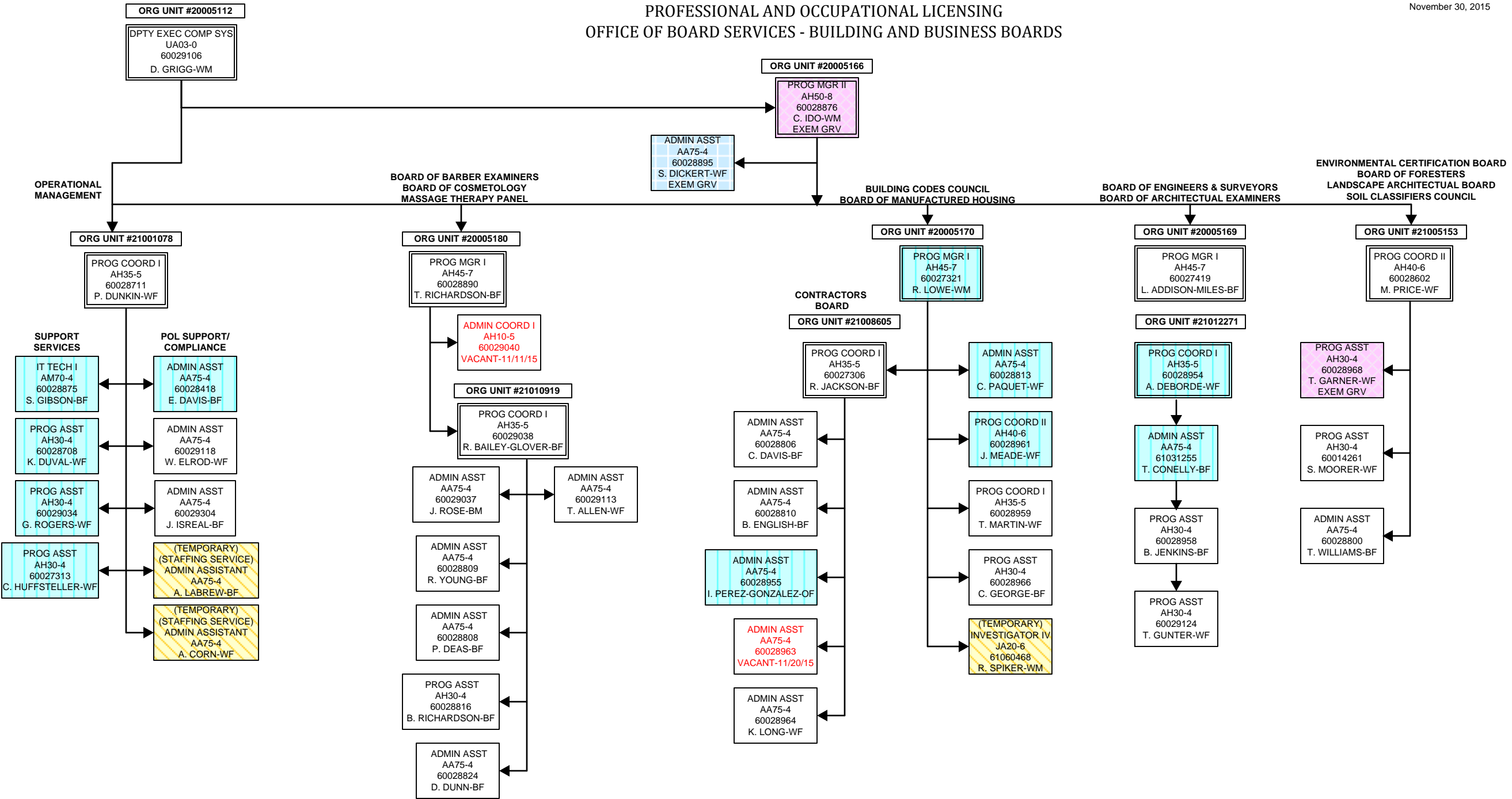
PROG COORD I
AH35-5
60028208
S. DAVIS-WM

PROG COORD I
AH35-5
60028952
G. PEATON-WM

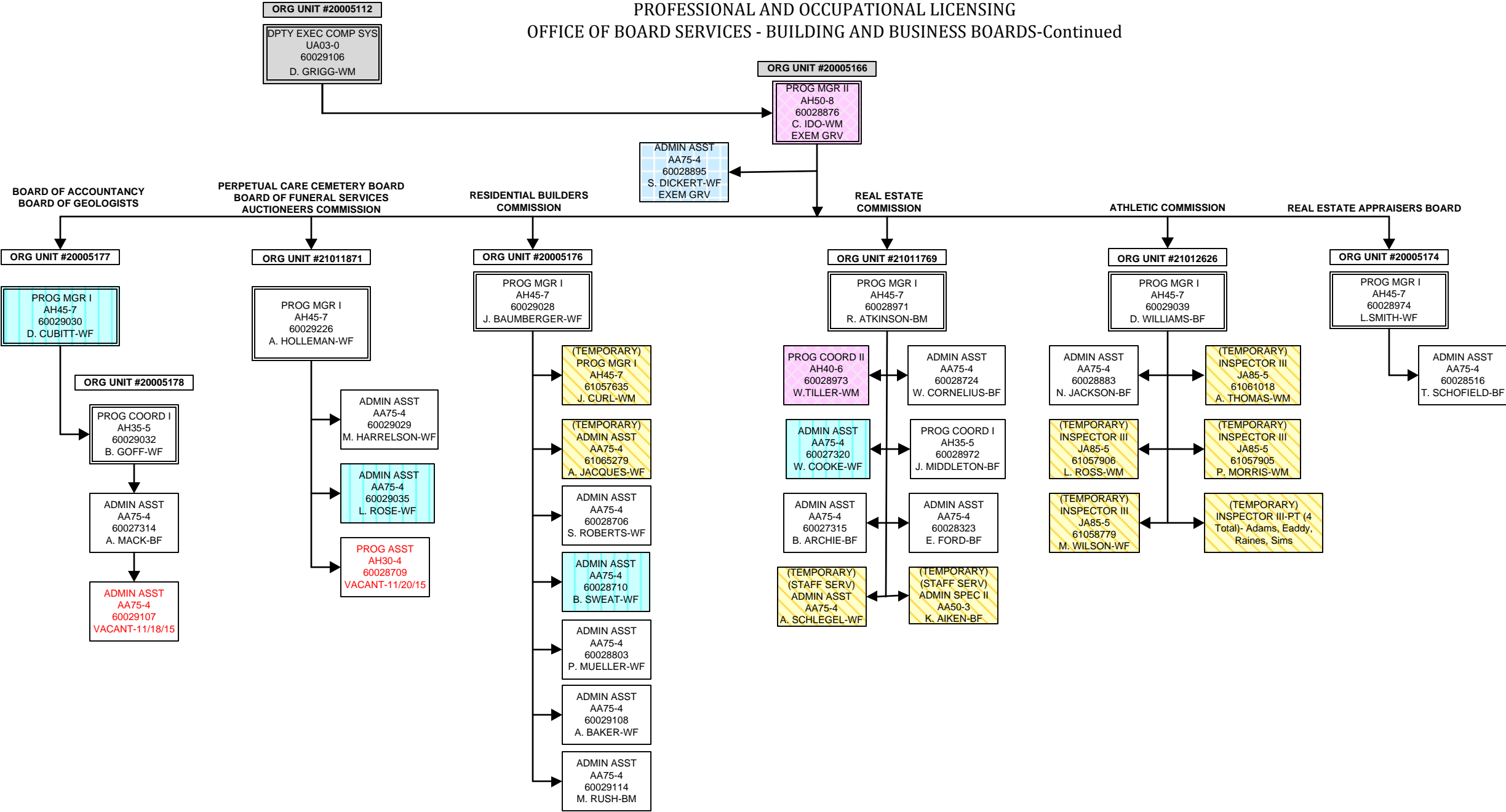
(TEMPORARY)
FSO II
JC70-4
46 TEMPS

ORG UNIT #21009052
PROG COORD I
AH35-5
60028124
M. GEORGE-WM
EXEM GRV

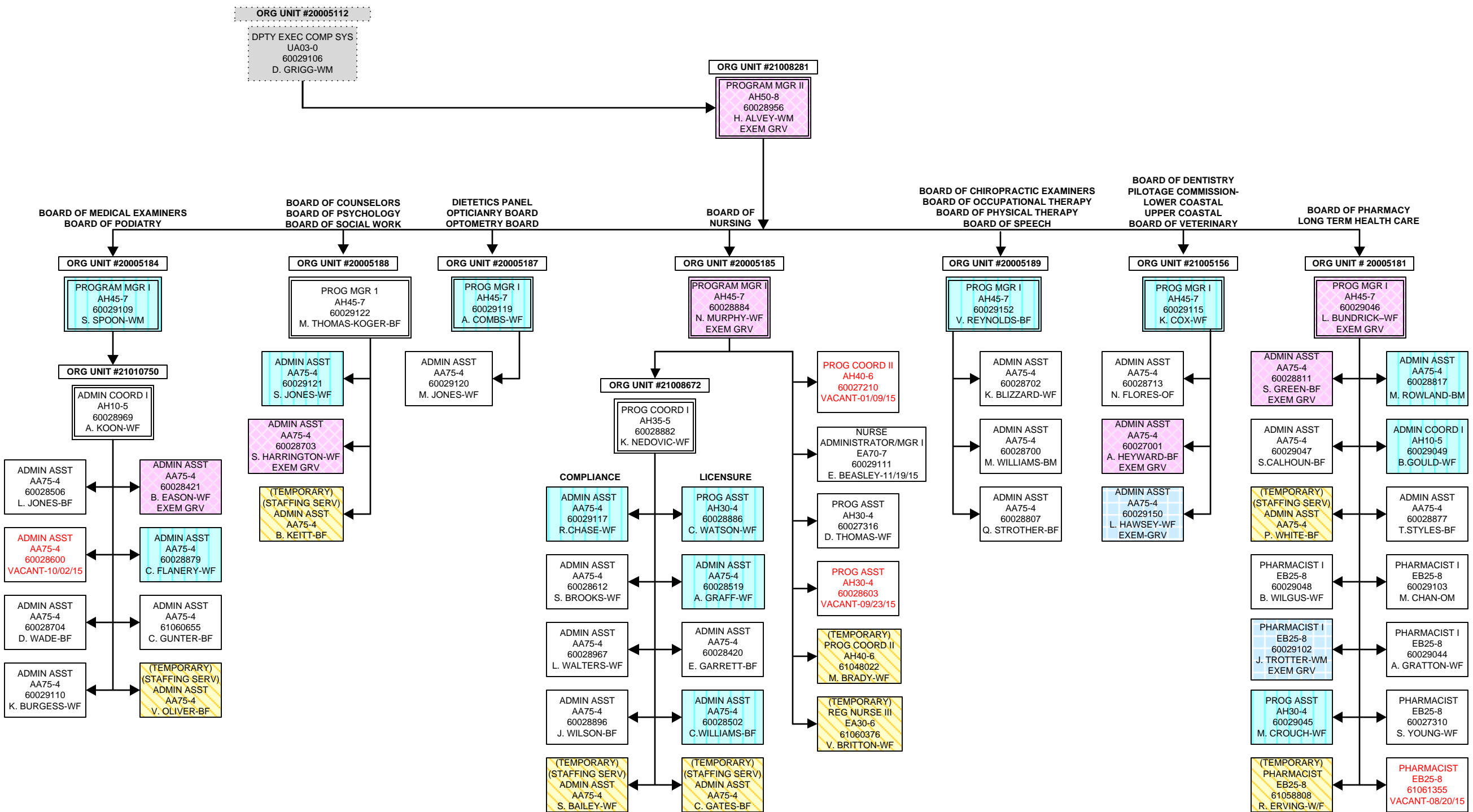
PROFESSIONAL AND OCCUPATIONAL LICENSING
OFFICE OF BOARD SERVICES - BUILDING AND BUSINESS BOARDS



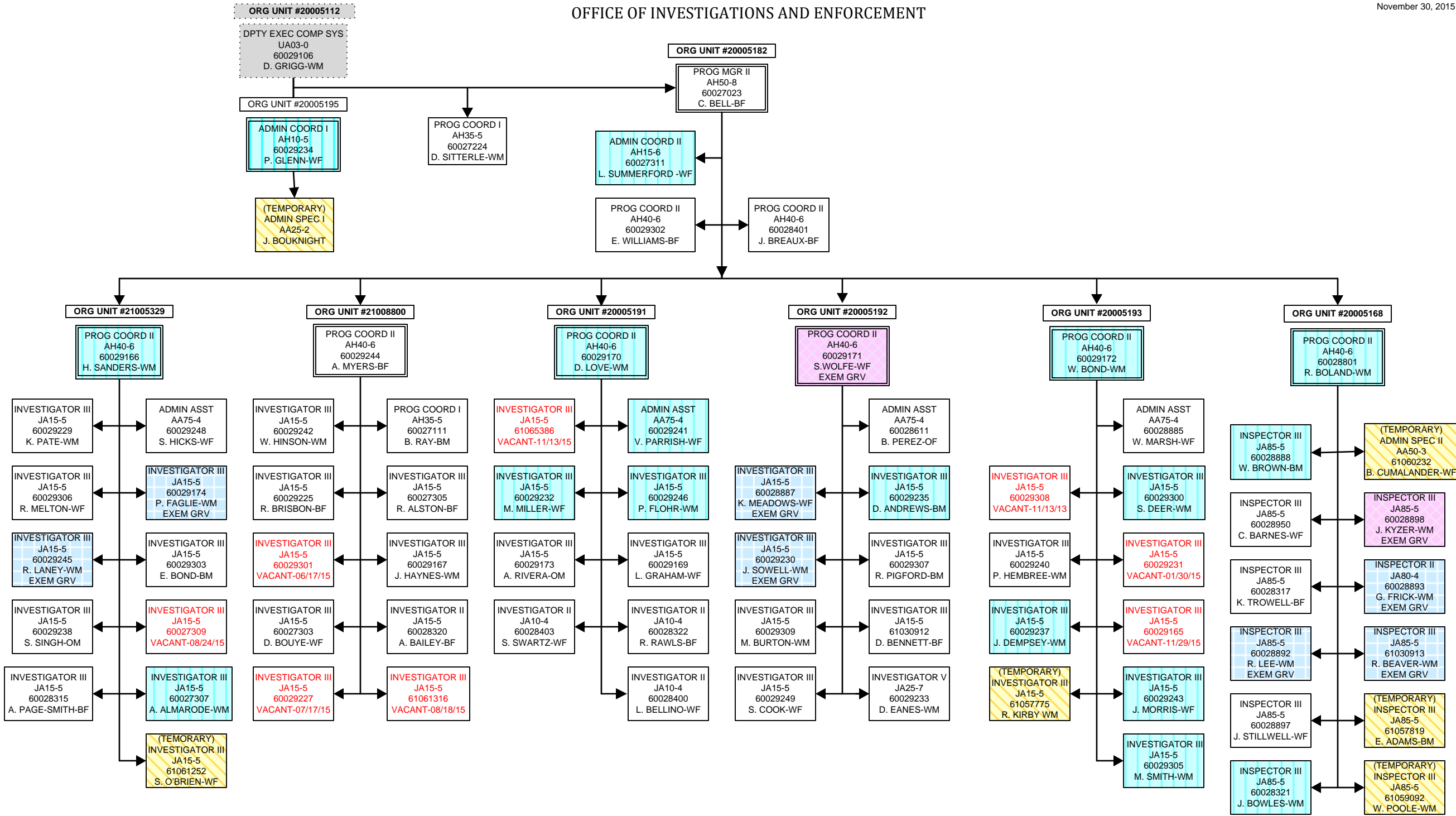
PROFESSIONAL AND OCCUPATIONAL LICENSING
OFFICE OF BOARD SERVICES - BUILDING AND BUSINESS BOARDS-Continued



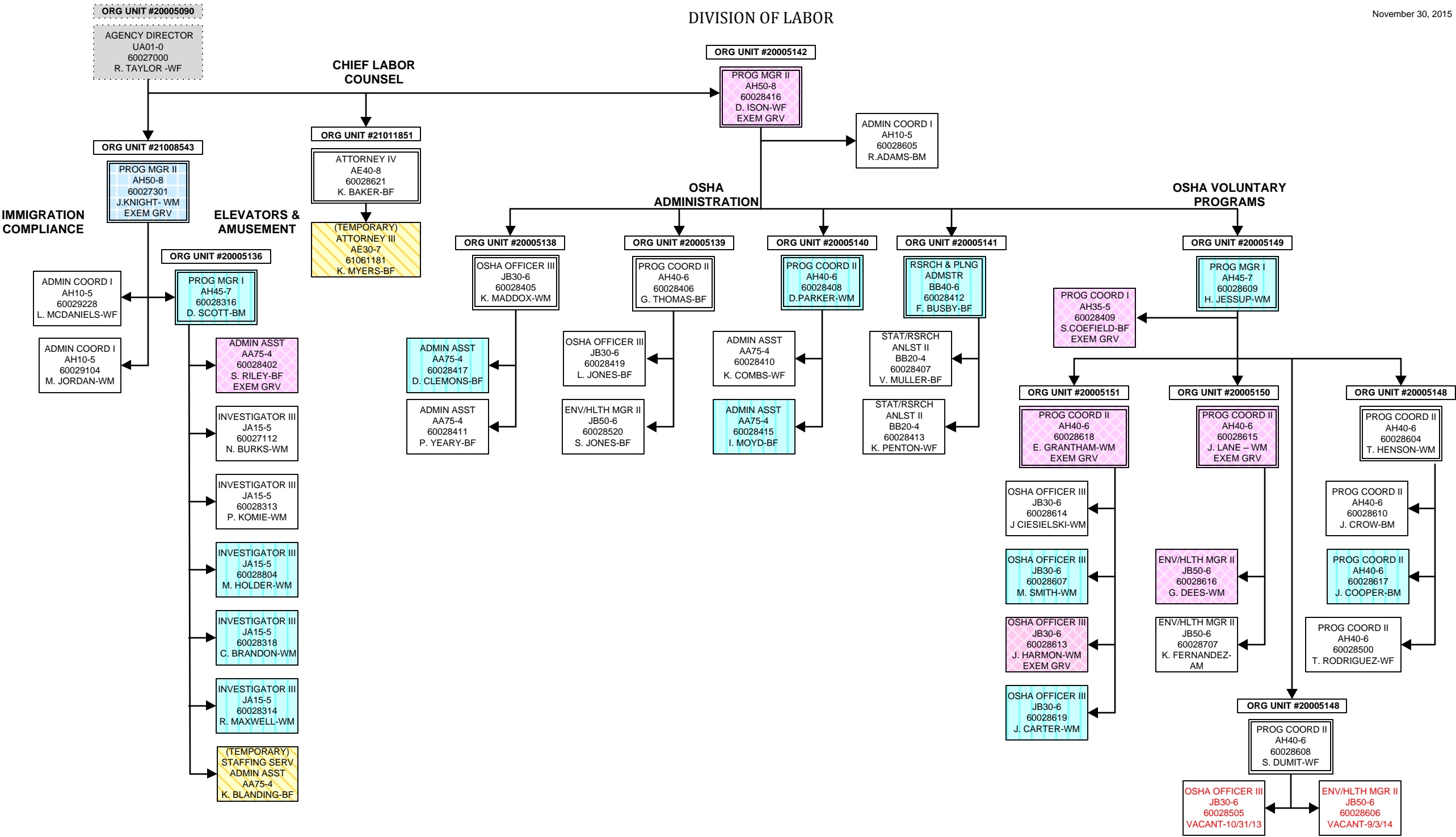
OFFICE OF BOARD SERVICES
HEALTH AND MEDICALLY RELATED BOARDS



OFFICE OF INVESTIGATIONS AND ENFORCEMENT



DIVISION OF LABOR



DIVISION OF LABOR
OSHA-COMPLIANCE

