

Design of streets, driveways, paving, curbing and walks dedicated for public use and layout of all utilities in public rights of way are hereby approved by the City of Columbia, S.C.

W. S. Tomlinson, City Engineer

Forest Drive

4' of existing 20' concrete paving

Property line as purchased by the local Housing Authority

3" water meter to be installed by the City of Columbia, S.C. but to be paid for by the Contractor

Sidewalk

Sidewalk

Established Property Line

Drip Box to be furnished and installed by the S.C. Electric and Gas Co.

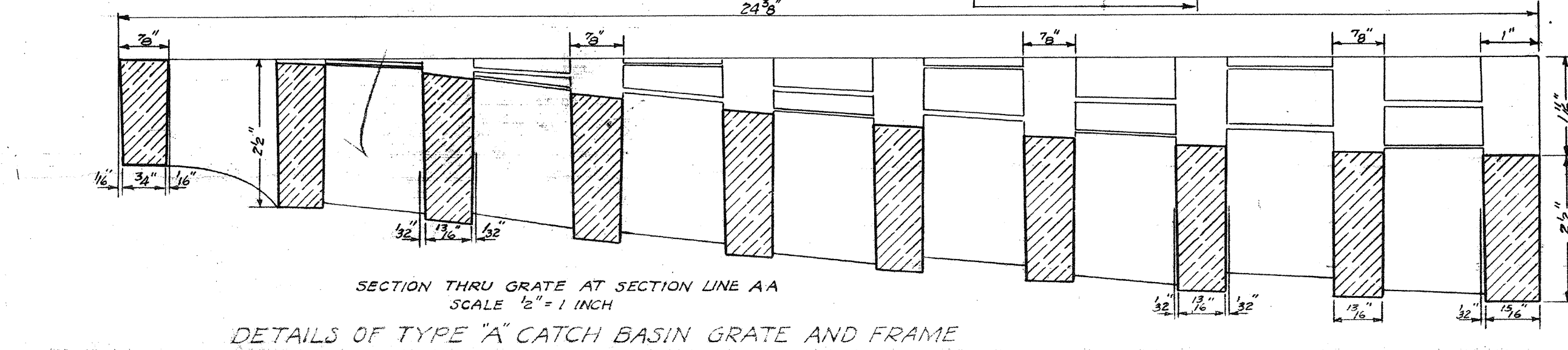
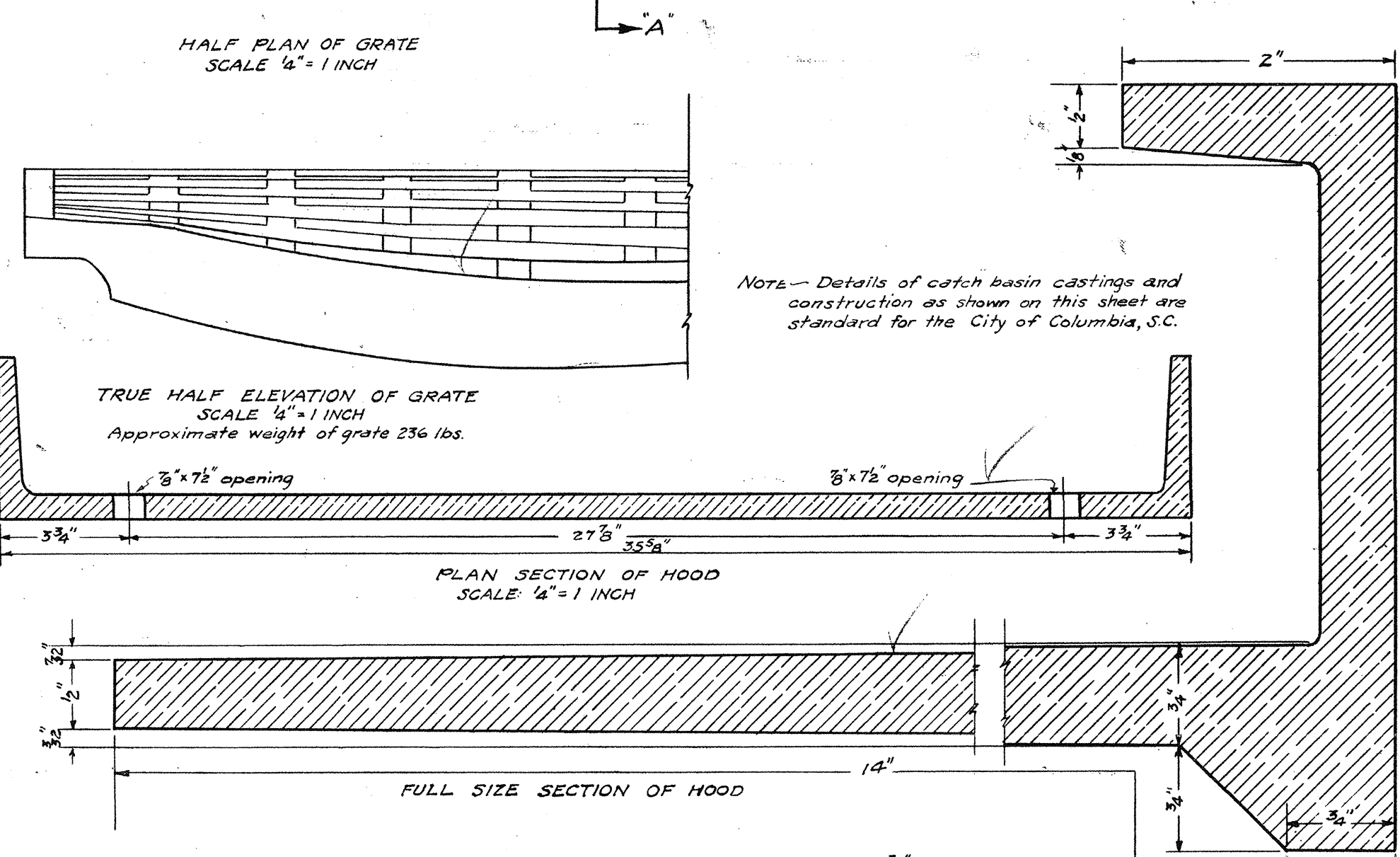
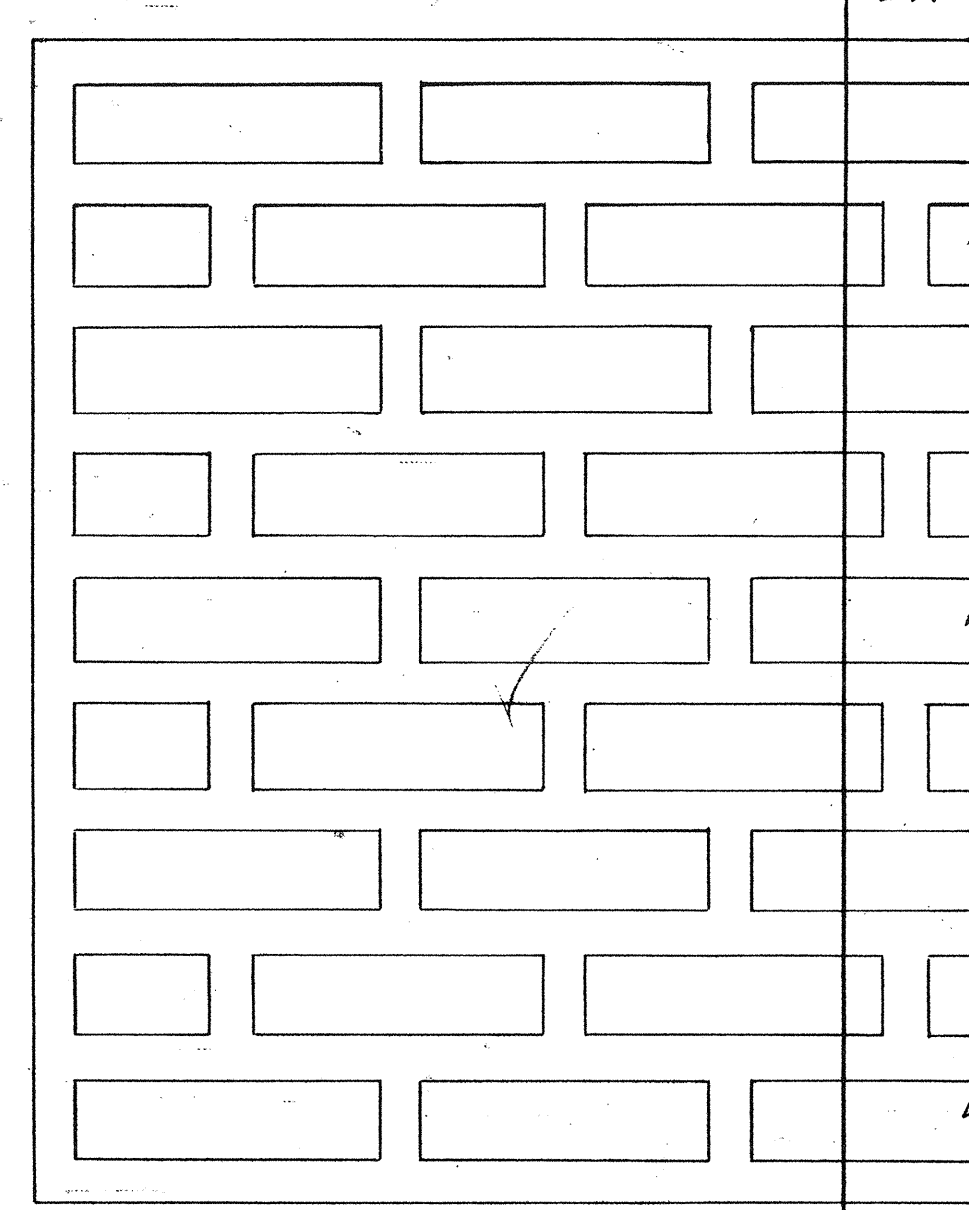
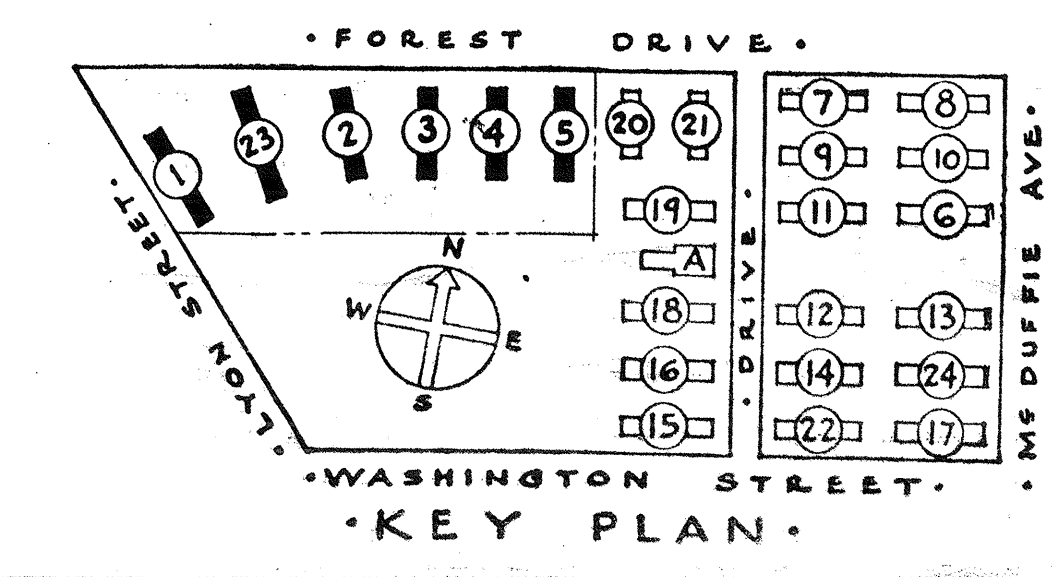
To be installed by City of Columbia, S.C.

Contractor to make storm sewer connection to manhole to be constructed here by the City of Columbia, S.C.

Notes-
All sanitary sewers from buildings to mains to be 4"
For existing utilities see Plan No. 3, Utility Map.
For other finished grade elevations see Block Plans.

Tomlinson Engineering Co.
Columbia, S.C.
Engineers

SHEET TITLE		PLAN OF BLOCK "A" SANITARY & STORM SEWERS, WATER LINES AND GAS LINES	
GONZALES GARDENS		LOW RENT HOUSING PROJECT, COLUMBIA, S. C. 21	
DESIGNED BY		THE HOUSING AUTHORITY OF THE CITY OF COLUMBIA, S. C.	
APPROVED BY		UNITED STATES HOUSING AUTHORITY	
CHECKED	DATE	APPROVED BY	DATE
9-13-39	9-13-39	JAMES B. URBAN	9-13-39
ARCHITECT		DATE 9-13-39	



DETAILS OF TYPE "A" CATCH BASIN GRATE AND FRAME