

# **SITE SPECIFIC PLAN**

## **PART 4, SCORERP**



# **CATAWBA NUCLEAR STATION**

**October 2011**



**CATAWBA NUCLEAR STATION - SITE SPECIFIC PLAN**  
**PART 4, SCORERP**  
**TABLE OF CONTENTS**

---

	<u>PAGE NUMBER</u>
I. Introduction.....	4-1
II. Purpose .....	4-1
III. Situation and Assumptions .....	4-1
A. Situation.....	4-1
B. Assumptions .....	4-2
IV. Concept of Operations .....	4-2
A. General.....	4-2
B. Specific .....	4-2
1. Alert and Notification .....	4-2
2. State Emergency Operation Center.....	4-3
3. Local .....	4-3
4. Traffic Management .....	4-3
5. Radiological Monitoring and Decontamination .....	4-4
6. Evacuation .....	4-4
7. Radiological Exposure Control.....	4-8
8. Transportation.....	4-8
9. Medical .....	4-8
10. Communications .....	4-8
11. Training.....	4-9
12. Drills and Exercises .....	4-9
V. Organization and Assignment of Responsibilities.....	4-10
A. State .....	4-10
B. Local .....	4-10
C. Organizational Relationships.....	4-10
VI. Administration and Logistics.....	4-10
VII. Direction and Control .....	4-11
A. SEOC .....	4-11
B. County Emergency Operations Centers .....	4-11
C. Catawba Nuclear Station .....	4-11

	<u>PAGE NUMBER</u>
Table to Figure 1- CNS 10-Mile EPZ Map and Primary Evacuation Routes.....	4-12
Figure 1-Catawba Nuclear Station 10-Mile EPZ Map .....	4-13
Figure 2-CNS 50-Mile Ingestion Exposure Pathway Emergency Planning Zone Map.....	4-14
Figure 3-CNS 10-Mile EPZ Population Distribution Map.....	4-15
Figure 4-Organizational Relationships .....	4-16
Annex 1-Alert and Notification .....	4-1-1
Attachment A-State EAS System for Upstate Operational Area.....	4-1-A-1
Annex 2-Reception Centers and Shelters .....	4-2-1
Attachment A-Shelters and Capacities .....	4-2-A-1
Annex 3-Medical and Public Health Support.....	4-3-1
Attachment A-Letter of Agreement With Piedmont Medical Center.....	4-3-A-1
Attachment B-Letter of Agreement With Carolinas Medical Center .....	4-3-B-1
Attachment C-Map to Primary Hospital.....	4-3-C-1
Attachment D-Map to Backup Hospital .....	4-3-D-1
Annex 4-Evacuation of Special Facilities.....	4-4-1
Attachment A-Alert and Notification Diagram .....	4-4-A-1

**CATAWBA NUCLEAR STATION  
PART 4, SCORERP  
SITE SPECIFIC PLAN**

---

**I. INTRODUCTION**

The Catawba Nuclear Site (CNS) Site Specific Plan, Part 4, South Carolina Operational Radiological Emergency Response Plan (SCORERP) provides for the guidance, coordination and utilization of state and other resources in support of local governments in the event of a radiological incident at CNS, Duke Energy Corporation, located in York County. The CNS Site Specific Plan forms an integral part of the SCORERP and addresses matters pertaining directly to CNS not already addressed in the SCORERP Basic Plan.

**II. PURPOSE**

To protect the populace and property in areas that may be affected by a radiological incident at CNS and to provide for off-site recovery.

**III. SITUATION AND ASSUMPTIONS**

**A. Situation**

1. CNS is located on the western shore of Lake Wylie and is approximately 6 miles north of the city of Rock Hill, SC. The geographic coordinates are: Latitude 35° 3' 5" North and Longitude 81° 4' 10" West (See figure 1). CNS is owned and operated by Duke Energy Corporation, whose corporate headquarters is in Charlotte, North Carolina.
2. CNS Units 1 and 2 pressurized water reactors became operational in 1985 and 1986 respectively. They have a production capability of 2,290,000 kilowatts of power. Duke Energy Corporation's Lake Wylie Dam and Hydroelectric Station are located approximately 4.5 miles southeast of the site.
3. The 10-mile Plume Exposure Pathway Emergency Planning Zone (EPZ) that surrounds the station encompasses only York County in South Carolina. Portions of Gaston and Mecklenburg Counties in North Carolina also lie within the 10-mile EPZ of CNS (See Figure 1). York County has formulated a detailed radiological emergency response annex to the County Emergency Operations Plan (EOP) that supports the operational framework of the SCORERP (See Annex Q, York County EOP).
4. York, Chester, Fairfield, Newberry, Cherokee, Spartanburg, Union, Kershaw, Lancaster, Chesterfield and Laurens Counties in South Carolina and also Rutherford, Cleveland, Gaston, Burke, Lincoln, Catawba, Union, Anson, Mecklenburg, Stanly, Cabarrus, Iredell and Rowan Counties in North Carolina lie within the 50-mile Ingestion Exposure Pathway Emergency Planning Zone (See Figure2)
5. CNS prevailing winds are from the southwest.

B. Assumptions

1. A radiological incident could occur at CNS that may cause an off-site hazard to residents and property. Planning for a radiological incident will facilitate an effective response.
2. Retention of existing licenses for Nuclear Power Plants (NPP) is dependent on effective emergency operations of state/local jurisdictions and of the licensee, in accordance with NUREG 0654, REV.1, 1980.
3. A radiological incident at CNS that presents off-site radiological hazards will involve the governments of counties within the 10-mile EPZ, both in South and North Carolina. Therefore, state government will be required to provide direction, coordination and support in accordance with the State Code of Regulations 58-1 and 58-101.

**IV. CONCEPT OF OPERATIONS**

A. General

The South Carolina Emergency Management Division (SCEMD), under the direction of the Governor, and York, Chester, Cherokee, Union and Lancaster counties will conduct the off-site response to a radiological incident at CNS. The Governor, through the Director, SCEMD, and the State Emergency Operations Center (SEOC) will exercise direction and control of state emergency operations. The Director, SCEMD, will coordinate all state agencies, departments and local emergency response organizations mobilized pursuant to this plan. To assure adequate response and efficient use of state personnel and other resources, State Emergency Support Functions (ESFs), which correlate to the ESFs in the National Response Framework (NRF), have been designated. ESF responsibilities and procedures are contained in the South Carolina Emergency Operations Plan (SCEOP) and its' supporting Standard Operating Procedures (SOPs). Federal response to a radiological incident at CNS in support of the State will be accomplished under the provisions of the Federal Radiological Emergency Response Plan (FRERP) and the NRF.

B. Specific

1. Alert and Notification

- a. See Annex A.
- b. Alert and Notification procedures are designed not only to inform and instruct the populace in emergency planning zones, but also to notify federal, state, and local Radiological Emergency Response (RER) forces. In the event of an incident at CNS, the primary means of alerting agencies and response forces is the Selective Signaling System (SSS). Selective Signaling is a teleconferencing system using the Duke Energy Corporation microwave system tied to short lease lines from local

telephone companies. Backup systems for SSS are commercial telephone and Local Government Radio (LGR). A fixed siren system is the primary means of alerting the public within the 10-mile EPZ. Route alerting by local law enforcement is the backup to the sirens. Emergency protective action instructions for the public will be sent to the National Weather Service (NWS), in Greer, SC for broadcast to local media, tone alert and weather radios. SCEMD will call the NWS via telephone to alert that an emergency notification message is being sent by fax. The message will then be faxed to the NWS and a follow up telephone call by SCEMD will confirm receipt of the faxed message. The Emergency Alert System (EAS) is the backup for the National Weather Service.

2. State Emergency Operation Center (SEOC)

- a. The SEOC, 2779 Fish Hatchery Road, West Columbia, will be activated upon notification of an Alert Emergency Classification Level (ECL). Direction and control of emergency response forces will emanate from the SEOC.
- b. The South Carolina Department of Health and Environmental Control (DHEC), under the auspices of ESFs 8 and 10, will be co-located in the SEOC. A DHEC technical representative will also be dispatched to the Duke Energy Corporation Emergency Operations Facility (EOF) is located in the Duke Energy Building, 526 S. Church Street, Charlotte, NC 28202-1802. (See Figure 1).
- c. Duke Energy Corporation will provide a technical representative to the SEOC. SCEMD representatives will be dispatched to the Duke Energy Corporation EOF and the Joint Information Center (JIC) (See Figure 1).
- d. SCEMD will provide REP and/or REM (Regional Emergency Manager) liaison officers to both host and risk county EOCs and the Duke Energy Corporation Emergency Operations Facility (EOF).

3. Local

County/Municipal governments are responsible for local radiological emergency response within their jurisdictions, except for technical radiological assessment. Based upon requests and verification of available resources by SEOC personnel, additional assets may be furnished to aid local agencies.

4. Traffic Management

- a. Upon declaration of a Site Area Emergency ECL, ESF 16 (Emergency Traffic Management) led by the South Carolina Highway Patrol (SCHP) will coordinate the occupation of all Traffic Control Points (TCPs) by state and local law enforcement officers within the 10-mile EPZ. The

purpose of TCPs is to provide assistance during an evacuation and prevent access to restricted areas. TCP locations are depicted in Figure 1.

- b. The SC Department of Natural Resources-Law Enforcement (SCDNR-LE), in coordination with the York County Office of Emergency Management, York County Sheriff's Department, NC Wildlife Resources Commission-Enforcement Division (NCWRC), NC Department of Crime Control and Public Safety, Division of Emergency Management (NCEM), Charlotte-Mecklenburg Police Department and Gaston (NC) Police Department, will conduct water and air operations to evacuate hunters, fishermen, boaters, and campers from the affected areas of Lake Wylie and the Catawba River.
- c. Duke Energy Corporation security personnel will control entrance into the site proper.
- d. Only pre-designated forms of identification will be honored at security check points as outlined in the Basic Plan, Attachment E.
- e. Local authorities are responsible for security and traffic control within their jurisdictions during all phases of a radiological incident. ESF 16 will coordinate requests from local authorities when reinforcements are required.

5. Radiological Monitoring and Decontamination:

- a. See Basic Plan, Annex 6.
- b. Properly trained county teams will conduct radiological monitoring and decontamination of evacuees and emergency workers with technical assistance provided by DHEC, if required.
- c. Cherokee, Chester, Lancaster, Union and York counties have designated radiological monitoring and decontamination points. The location of each monitoring and decontamination point is contained in county EOPs.
- d. York County maintains its own radiological laboratory. York County is responsible for the calibration, maintenance and distribution of radiological monitoring equipment for York County emergency workers.

6. Evacuation:

- a. When a State of Emergency has been declared, the Governor may issue orders to evacuate all or portions of the 10-mile EPZ surrounding CNS (See Figure 1). Orders for evacuation of the 2-mile EPZ will usually precede orders for evacuation of other zones within the 10-mile EPZ.
- b. Evacuation will normally be ordered at the General Emergency ECL. Evacuation may be ordered at the Site Area Emergency or Alert ECLs if the potential for further degradation of plant conditions appears imminent.

- c. During a fast-breaking event, CNS officials may recommend evacuation to county authorities who may then, recommend and coordinate evacuation of impacted zones.
- d. The Sheriff (as Chief Law Enforcement Officer of the county) will, in coordination with the SCHP and other law enforcement agencies, coordinate evacuation activities in accordance with the affected county EOP.
- e. Residential Population.
  - (1) Evacuation Times:

### Sector Evacuation Times

Distance (miles)	Sector Direction (degrees)	Zones Affected	Evacuation Time - Fair Weather	Evacuation Time - Adverse Weather
0-2	180-E	A0	2:40	3:00
0-2	180-W	A0	2:40	3:00
0-5	90-NE	A0,A1	4:40	6:20
0-5	90-SE	A0, B1,C1	5:20	6:20
0-5	90-SW	A0, D1	3:00	3:20
0-5	90-NW	A0, E1, F1	3:00	3:20
0-10	90-NE	A0, A1, A2, A3	7:00	8:10
0-10	90-SE	A0, B1, C1, B2, C2	5:20	6:20
0-10	90-SW	A0, D1, D2	3:00	3:20
0-10	90-NW	A0, E1, E2, F1, F2, F3	4:20	6:00
0-10	360	Entire EPZ	7:00	8:10

- (2) Population Distribution Map (See Figure 3).

- f. Evacuation Zone, Landmark and Boundary Descriptions

<u>ZONES</u>	<u>LANDMARK DESCRIPTIONS</u>	<u>BOUNDARY DESCRIPTIONS</u>
A-0	Allison Creek Rd, Concord Rd, Concord Shores, Forest Winds, Hudson Rd, Torrence Branch, and West Liberty Hill Rd.	In York County, the 2-mile EPZ is bordered on the North by both sides of SR 1099 (Lake Wylie Rd); on the East by Lake Wylie; on the South by the southern-most inlet of Lake Wylie; and on the West by SC 274.

<u>ZONES</u>	<u>LANDMARK IDENTITIES</u>	<u>BOUNDARY DESCRIPTIONS</u>
B-1	Dam Rd, Gold Hill Rd (west of Hwy.	In York County, Zone B-1 is bordered on the North

160), Tega Cay.

by the North Carolina/South Carolina State Line; on the East by SC 160, SR 99 (Dam Rd), and SR 741 (Gardenview Rd); on the South by Catawba River; and on the West by Lake Wylie.

- B-2 Anne Springs Close Greenway, Avery Lakes, Bailes Farm, Bailiwyck, Baxter, Carowinds, Doby Bridge Rd, Forest Lake, Fort Mill, Fox Hill, Gold Hill Rd (east of Hwy. 160), Gray Rock, Greenway Industrial Park, Hamilton Place, Heritage USA, Knights Bridge, Knights Castle, Lakemont Industrial Park, Peachtree Place, Regent Park, Riverview, Steele Meadows, Sutton Rd, Tara Plantation, Waterstone, White Grove, Willow Brook.
- C-1 Brookwood, Bryant Field Industrial Park, Camelot Woods, Cedar Forest Acres, Cedarwood, Churchill Heights, City of Rock Hill (north of Celanese Rd), Creekside Crystal Lakes, Devonshire, Forest Hills, Glenwood Acres, Hickory Hill, Kimberly Woods, Lakewood, Monterey Hills, Museum Rd, Park Creek, River Pines, Trexler Acres, Twin Lakes, Willow Acres, Windwood.
- C-2 Belair Acres, Cato Estates, City of Rock Hill (south of Celanese Rd), College Downs, Country Oaks, Coventry Estates, Eastview Rd, Fairlawn, Falls Rd, Hallmark Estates, Heathridge, Heckle Blvd, Hickory Oaks, Highland Creek, Hutchinson Place, Iredell Way, Lakeview Acres, Meadow Lakes, Oak Park Rd, Oakhurst, Oakwood Acres, Olewoods, Quiet Acres, Ragin Estates, Ravencroft, Rawlinson Woods, Red Oaks, Rock Hill Industrial Park, Royal Oaks, Sharonwood, Shorewood, Steeple Chase, Squire Estates, Sturgis Estates, Sunset Park, Swan Meadows, Westerswood, Wintercrest, Winthrop University, Woodbridge, Woodfield, Woodvale, York Technical College.
- In York County, Zone B-2 is bordered on the North by North Carolina/South Carolina State Line; on the East by Lancaster County Line, SR 253 (Williams Rd), SR 36 (Doby Bridge Rd) and SR 158 (White's Rd); on the South by Catawba River; and on the West by SC 160, SR 99 (Dam Rd), and SR 741 (Gardenview Rd).
- In York County, Zone C-1 is bordered on the North by the southernmost portion of lake Wylie; on the East by the Catawba River and I-77; on the South by SC 161; and on the West by SC 274.
- In York County, Zone C-2 is bordered on the North by SC 161; on the East by the Catawba River; on the West by SR 81 (Adnah Church Rd), SR 102 (Eastview Rd), and SR 157 (Holland Rd); on the South from SR 157 (Holland Rd) Southeast along Fishing Creek to Ogden Rd, travel Northeast on Ogden Rd, Southeast on Robertson Rd to Hwy. 121, South on Oakdale Rd to Taylors Creek, North along Taylors Creek to Hwy. 901, North on Hwy. 901 to Southland Park, East perimeter of Southland Park, parallel Hwy. 121, 72 pass old trash dump, Hwy. 21 to Springdale Rd, Northwest on Springdale Rd to Catawba River.

<u>ZONES</u>	<u>LANDMARK IDENTITIES</u>	<u>BOUNDARY DESCRIPTIONS</u>
D-1	Adnah Church Rd, Campbell Rd, Farmstead Rd area, Ivywood, Mallard Creek, Providence Heights, Rollingwood Circle, Shiloh Rd, Tirzah Rd, Wedgefield Dr, Windsong, Windy Run.	In York County, Zone D-1 is bordered on the North by SR 80 (Campbell Rd); on the East SC 274 and SR 81 (Adnah Church) on the South by SC 5; and on the West by SR 156 (Beth Shiloh Rd) and SR 181 (Atkins Rd).
D-2	Branch Rd, Countryside Estates, Fairhope Rd, Gordon Rd, Hwy. 5 York By-pass, Limestone Rd, Lincoln Forrest, Pioneer Rd, Turkey Farm Rd, Shiloh Farms, York.	In York County, Zone D-2 is bordered on the North by SR 172 (Old Limestone Rd) and SC 49; on the East by SR 181 (Atkins Rd), SR 102 (Eastview Rd), and SR 157 (Holland Rd); on the South from Hwy. 324, Southeast along Fishing Creek to Hwy. 324; and on the West by SR 711 (Kelly Rd), SR 75 (Sutton Spring Rd), SR 104 (Spring Lake Rd) and US 321.
E-1	Bethel Forest Subdivision, Charter Oaks, Clearcreek, Crosswinds, East Liberty Hill Rd, Ferguson Acres, Kingsbury Rd (south of Hwy. 55), Mountain View Rd, Newport Acres, Tidewood Lane, Twin Streams, Vander Lakes.	In York County, Zone E-1 is bordered on the North by SC 55; on the East by SC 274; on the South by SR 80 (Campbell Rd) and SC 49; and on the West by SR 181 (Sherrer Rd), SR 819 (Nichols Rd) and SR 54 (Paraham Rd).
E-2	Brightwood Dr, Brown Rd, Calabash Rd, Clearcreek Rd, Clover, Cloverbrook, Jim McCarter Rd, McCarter's Acres, Meadow Rd, Nichols Estate, Ormand Rd, Ramble Rd, St. Paul Church Rd, The Farms, Wood Rd, Woodland.	In York County, Zone E-2 is bordered on the North by SC 55; on the East by SR 54 (Paraham Rd), SR 819 (Nichols Rd) and SR 181 (Sherrer Rd); on the South by SC 49, SR 818 (Woods Rd), and SR 172 (Old Limestone Rd); and on the West by US 321 to include the entire incorporated city limits of Clover
F-1	Autumn Cove, Barclay Acres, Bethel School Rd, Camp Thunderbird, Chandler Woods, Forest Oaks, Johnson Rd, Lake Wylie Rd, Lake Wylie Woods, Marina Way Rd, Morningside Rd, River Hills.	In York County, Zone F-1 is bordered on the North by SC 557, SC 49, SC 274 and the east-west inlet of Lake Wylie, just North of SC 49; on the East by Lake Wylie; on the South by SR 1099 (Lake Wylie Rd) and SC 55; and on the West by SR 54 (Paraham Rd).
F-2	Amity Estates, Bowling Green, Brandon Rd, Cameron Acres, Fewell Rd, Green Pond Rd, Kendrick Rd, Lake Wyle Mobile Home Park, Lakedale, Love Rd, Meadow Wind, Oakridge Rd, Pole Branch Rd, Ridge Rd, Ridgewood, River Oaks Rd, Singing Pine Drive, Southwoods, State Line Rd, The Landing.	In York County, Zone F-2 is bordered on the North by the North Carolina/South Carolina Line; on the East by Lake Wylie; on the South by a Lake Wylie inlet, SC 274, SC 557, SR 54 (Paraham Rd) and SC 55; and on the West by US 321 to exclude the city limits of Clover.

- g. York County has designated evacuation routes for persons living, working, and transiting the 10-mile EPZ. These routes lead to reception centers/shelter areas (See Figure 1).
  - h. York County will provide transportation to those evacuees who are without transportation and to homebound persons requiring special transportation. State assistance may be requested. Special transportation needs are addressed in the York County EOP.
  - i. All evacuees will be processed through the shelters or reception centers as outlined in Annex B. Each evacuee, including those who elect not to accept temporary shelter, will be monitored, registered and processed. For control and re-entry purposes, each county will maintain records for contacting evacuees. Temporary housing should be located at least five miles from the EPZ outer boundary (15 miles from the nuclear facility site).
  - j. Evacuees may be permitted to enter evacuated areas for special needs, such as feeding and watering livestock, but only after coordination with their county EOC.
- 7. Radiological Exposure Control  
See Basic Plan, Annex 6.
- 8. Transportation:
  - a. The CNS 10-mile EPZ is covered by an excellent, all-weather road system that provides multiple primary and alternate routes for evacuation and access to the area. There are no obstacles that would impede rapid evacuation or response.
  - b. York County has plans for acquiring emergency transportation in the event of a radiological incident. The means for evacuating schools, jails, hospitals, nursing homes, the homebound and residents without private transportation are identified in the York County EOP.
  - c. State transportation resources may be requested to augment county transportation requirements.
- 9. Medical:
  - a. See Annex 3.
  - b. See Basic Plan, Annex 5.
- 10. Communications:
  - a. In the event of an emergency at CNS, the site is capable of notifying the National Weather Service, state and local emergency response networks

on a 24-hour basis. The CNS Emergency Coordinator or his designee is responsible for notifying the State Warning Point (SWP)/SEOC and York County Warning Point or EOC. Communications between the CNS, National Weather Service, State and local emergency operations centers are maintained through the following means:

- (1.) The Selective Signaling System (SSS) operates on the Duke Energy Corporation Telecommunications Network tied to short lines leased from the local telephone companies. It connects the CNS Control Room, Technical Support Center (TSC) and EOF with SWP/SEOC and York County WP and EOC. SSS is used to provide initial and updated information concerning CNS status.
  - (2.) A Decision Line (DL), located in the Duke Energy Corporation EOF, National Weather Service offices, SEOC, NCEOC, National Weather Service (NWS) and York, Union, Lancaster, Chester and Cherokee County EOCs. The DL is primarily used for decision making on protective actions.
  - (3.) Standard commercial and satellite telephone lines are available at CNS for communications with all state and local organizations. The satellite telephone is the primary backup communications tool for CNS.
  - (4.) A radio channeled to the SCEMD Local Government Radio (LGR) network at the CNS EOF with the capability of communicating with the SEOC, counties and the DHEC Mobile Operations Center (MOC).
- b. County communications officers are responsible for communications within their jurisdictions during a radiological emergency. Their responsibilities include the activation of communications systems, the maintenance and operation of the primary and alternate systems on a 24-hour basis, and reporting the system's status during an emergency. The responsible party is:
- York County: Communications Officer, responsible to the Director, York County office of Emergency Management.
- c. Communications by SCEMD to both risk and host counties shall be tested quarterly. Communications with federal emergency response organizations shall be tested quarterly. The Duke Energy EOF tests the Selective Signaling System on a monthly basis and the Decision Line on a quarterly basis. Communications between the nuclear site, state and local emergency operations centers, and field assessment teams shall be tested annually. Communication drills shall also include the aspect of understanding the content of messages.

11. Training:

County directors and directors of state agencies are responsible for assuring that Radiological Emergency Response (RER) training is conducted in accordance with the Basic Plan, Annex 2.

12. Drills and Exercises:

- a. See Basic Plan, Annex 4.
- b. Exercises are designed to test all elements of emergency preparedness plans pertaining to CNS and the capability of support elements in the 10-mile EPZ cited in such plans. A biennial exercise will be conducted and will involve mobilizing state and local government personnel and resources adequate to verify capability to respond to an incident scenario (simulated emergency) at CNS. Federal observers will evaluate and critique the biennial exercise.
- c. Drills are supervised periods of instruction designed to test, develop and maintain skills of individuals who form a part of radiological emergency response organizations. County directors shall ensure that drills are conducted by qualified instructors in the frequency listed below:
  - (1) Fire Drills: Annually, at least one fire drill will involve the Bethel or Newport Volunteer Fire Departments as a minimum. The remainder of the county's fire departments may support CNS during the drills.
  - (2) Medical Emergency (MS-1) Drills:

Annually, a simulated, radiologically contaminated/injured casualty from the CNS 10 mile EPZ will be treated and transported by the county EMS provider. This requirement will be rotated between South Carolina, which has the primary medical facility (Piedmont Medical Center, York County), and North Carolina, which has the back-up medical facility (Carolinas Medical Facility, Mecklenburg County.)

**V. ORGANIZATION AND ASSIGNMENT OF RESPONSIBILITIES**

- A. State (See Basic Plan, paragraph V).
- B. Local (See York County EOP).
- C. Organizational Relationships (See Figure 4).

**VI. ADMINISTRATION AND LOGISTICS**

- A. See the South Carolina Emergency Operations Plan (SCEOP), Section VIII, "Administration and Logistics".
- B. Counties provide their own administrative and logistics support. Requests for augmentation may be submitted in accordance with the SCEOP.

## VII. DIRECTION AND CONTROL

### A. SEOC

The SEOC is located at 2779 Fish Hatchery Road, West Columbia, SC 29172.

### B. County Emergency Operations Center

York County: 149 West Black Street, Rock Hill, SC 29731. York County alternate EOC is the mobile EOC vehicle for the York County Office of Emergency Management.

### C. York County Joint Information Center

York County JIC: (Primary) York County Office Complex, 1070 Heckle Blvd. Rock Hill, SC 29732. (Alternate) Winthrop University Coliseum, Rock Hill, SC.

### D. Catawba Nuclear Site

1. The EOF is located in the Duke Energy Center, 526 S. Church Street in downtown Charlotte, NC.
2. The JIC is located in the Duke Energy Center, 526 S. Church Street, in downtown Charlotte, NC.

**TABLE TO FIGURE 1- CATAWBA NUCLEAR STATION 10-MILE EPZ MAP**

<b>STATE TRAFFIC CONTROL POINTS</b>	
ST-01	SC-49, SC 55, and SC 274
ST 02	SC-49 and Liberty Hill Road (paved)
ST 03	SC-274 and S-80
ST 04	SC-274 and S-1081

**CATAWBA NUCLEAR STATION PRIMARY EVACUATION ROUTES**

- A-0: \*North on SC 274 to SC 49, east to NC 160. North to Billy Graham Pkwy. North to I-85. North to NC 49 North on NC 49 to UNC Charlotte shelter. \*North on NC 49 to I-77. North to I-85. North to NC 49. North on NC 49 to UNC Charlotte shelter. \*North on NC 49 to Arrowhead Rd. East to I-77 North. North to NC 49. North on NC 49 to UNC Charlotte shelter.
- B-1: Gold Hill Road to I-77 north. North to I-85. North to NC 49. North on NC 49 to UNC Charlotte shelter.
- B-2: \*East on SC 160 to Hwy. 521 (south) to New Town Rd in NC. Left on New Town Rd to Marvin School Rd. Left on Marvin School Rd to Rea Rd. Right on Rea Rd to Hwy 16 (Providence Rd). Left on Hwy. 16 to Hwy. 84, (Weddington Rd). Right on Hwy. 84 to School Drive. Left onto School Drive to Weddington High School shelter.
- C-1: Mt. Gallant Rd to Celanese Rd (SC 161). South on I-77 to US 21. Exit south on US 21 to SC 5. East to US 521. South on Main Street. West on Woodland Drive to Lancaster High School shelter.
- C-2: \*South on I-77 to SC 9. East to Lewisville High School or Lewisville Middle School shelter. \*South on SC 72 to Saluda Rd (SC 121), south to Chester Senior High School shelter. \*South on I-77 to East SC 97 to SC 99. South on SC 99 to SC 138, right (west) on SC 138 to Great Falls School Complex shelter.
- D-1: \*SC 49 west to SC 9. North on SC 9 to Lockhart School shelter. \*SC 49 west to Union, SC and to Union High Complex shelter.
- D-2: \*SC 49 west to SC 9. North on SC 9 to Lockhart School shelter. \*SC 49 west to Union, SC and to Union High Complex shelter.
- E-1: \*SC 55 west to SC 5. North to US 29 West to Rutherford St. in Blacksburg. Left on Rutherford St. to Blacksburg High School shelter. (additional shelters will be opened as needed)
- E-2: \*SC 55 west to SC 161. North to NC 161. North to Business NC 74. West to Phifer Rd. North to Kings Mountain Middle School and Kings Mountain High School shelters.
- F-1: \*SC 49 to NC 160. North to Billy Graham Pkwy. North to I-85. North to NC 49. North to UNC Charlotte shelter.
- F-2: NC 274 north to Garrison Blvd. North to US 21. North to C. Grier Blvd to Gaston College shelter
- F-3: \*NC 274 North to Garrison Blvd. West to US 321. North to C. Grier Blvd to Gaston College shelter. \*NC 279 North to Garrison Blvd. West to US 321. North to c. Grier Blvd to Gaston College shelter. \*NC 273 North to Mt. Holly. Left on West Charlotte Ave (Hwy 27). Left on Kelly Farm Rd. Left on Lane Rd to East Gaston High School shelter. \* NC 274 to NC 321 to Dallas to WC Friday Middle School shelter or NC 279 to Dallas to North Gaston High School shelter.

**FIGURE 1-CATAWBA NUCLEAR STATION 10-MILE EPZ MAP**

**INSERT**  
**CATAWBA NUCLEAR STATION 10-MILE EPZ MAP**



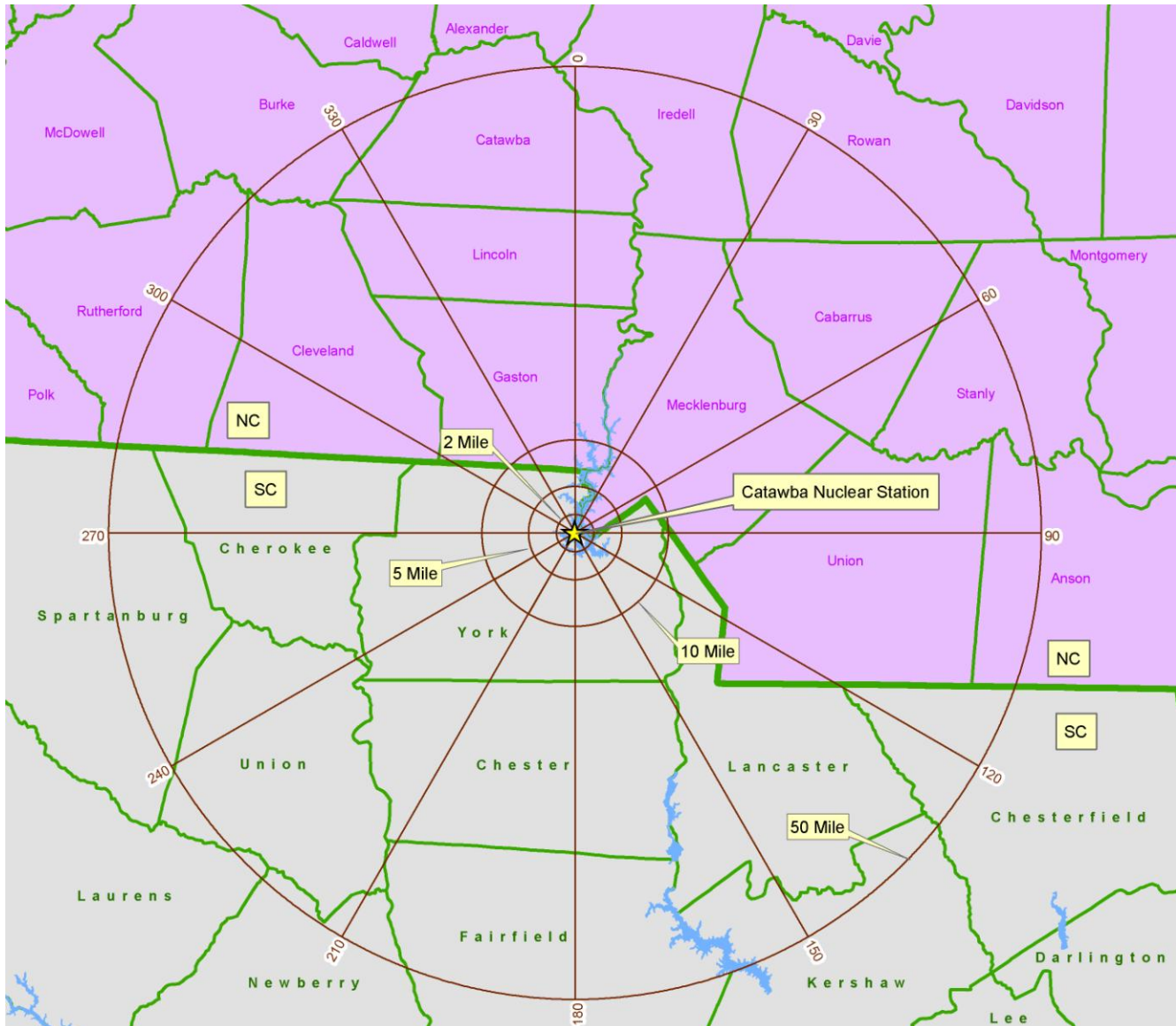
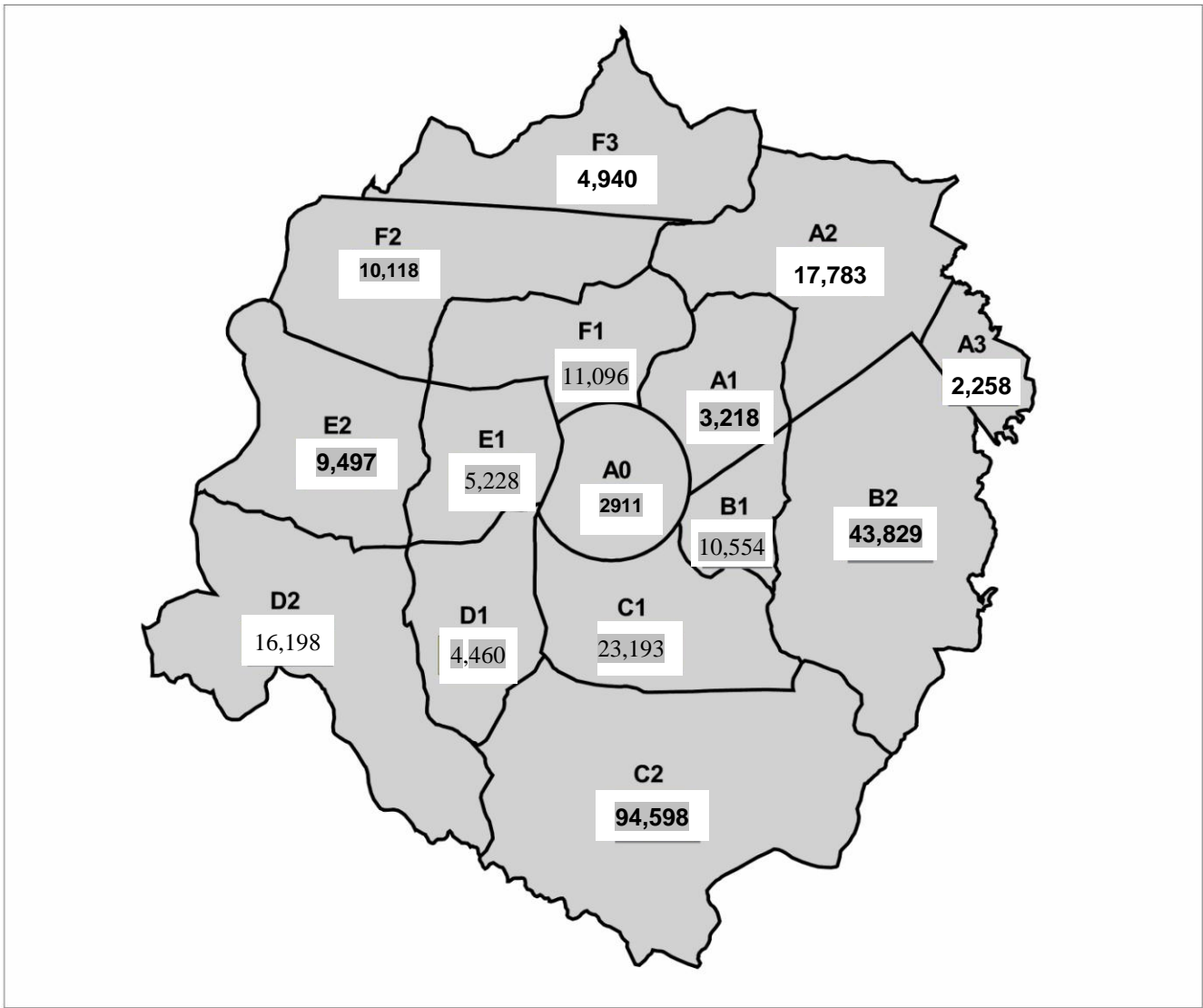
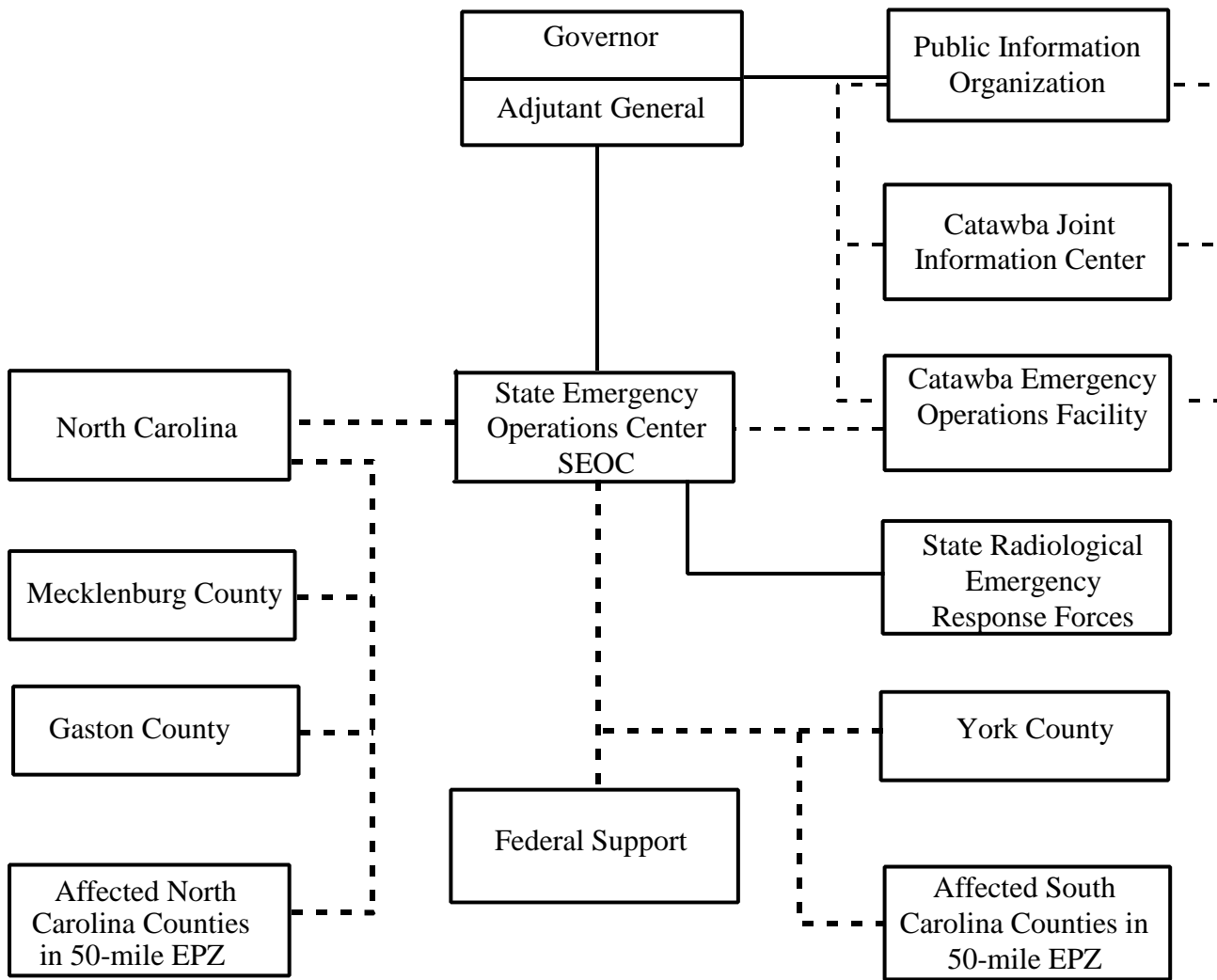
**FIGURE 2-CNS 50-MILE INGESTION EXPOSURE PATHWAY EMERGENCY PLANNING ZONE**

FIGURE 3-CNS 10-MILE EPZ POPULATION DISTRIBUTION MAP



SC Total: 257,623

**FIGURE 4—ORGANIZATIONAL RELATIONSHIPS**



**Affected Counties in 50 - mile EPZ:**

**North Carolina**

Anson	Iredell
Burke	Lincoln
Cabarrus	Mecklenburg
Cleveland	Rowan
Gaston	Rutherford
Union	Stanly
Catawba	

**South Carolina**

Cherokee	Lancaster
Chester	Laurens
Chesterfield	Newberry
Fairfield	Spartanburg
Kershaw	Union
York	

———— Direction  
 - - - - - Coordination

PAGE INTENTIONALLY LEFT BLANK