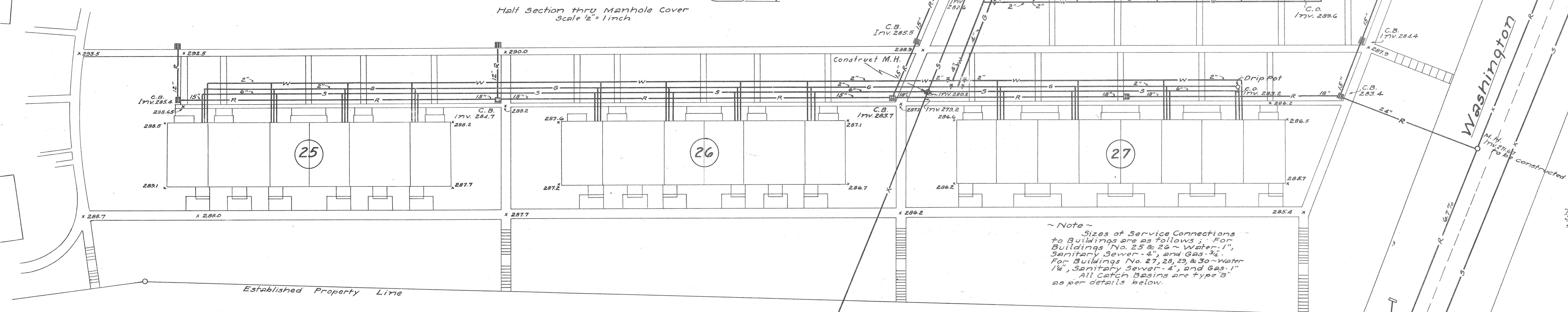
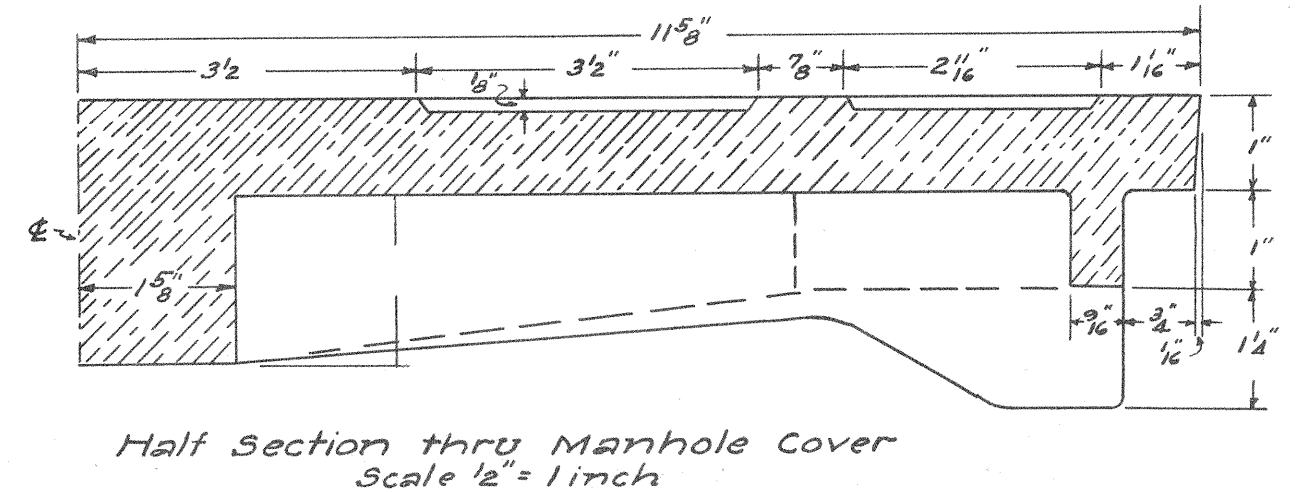


Note: Details of Manhole Castings and Construction as shown on this sheet are standard for the City of Columbia.



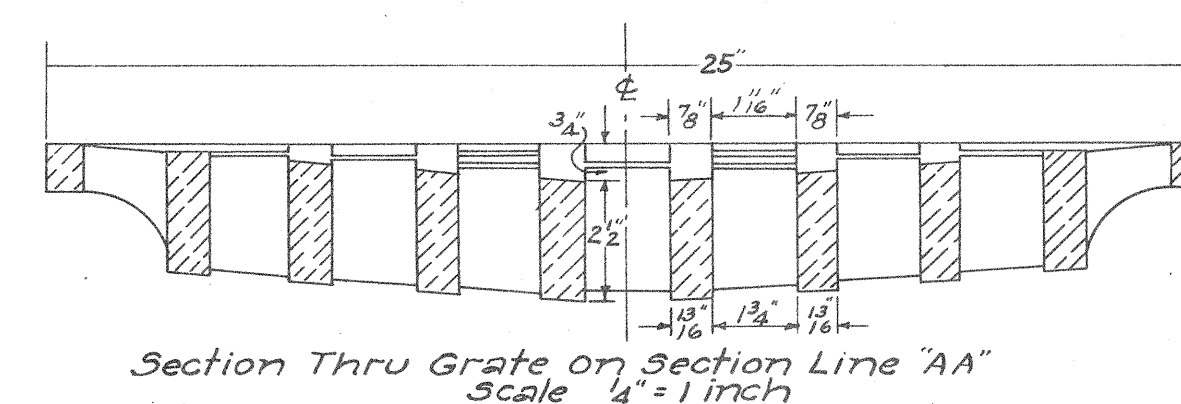
Note: Sizes of Service Connections to Buildings are as follows: For Buildings No. 25 & 26 - Water 1", Sanitary Sewer 4", and Gas 3/4". For Buildings No. 27, 28, 29 & 30 - Water 1 1/4", Sanitary Sewer 4", and Gas 1". All Catch Basins are type "B" as per details below.

Note: Clean outs on ends on Sanitary sewer lines indicate a Wye Branch for the service connection with the end of the main plugged with a T.C. or concrete plug cemented in place.

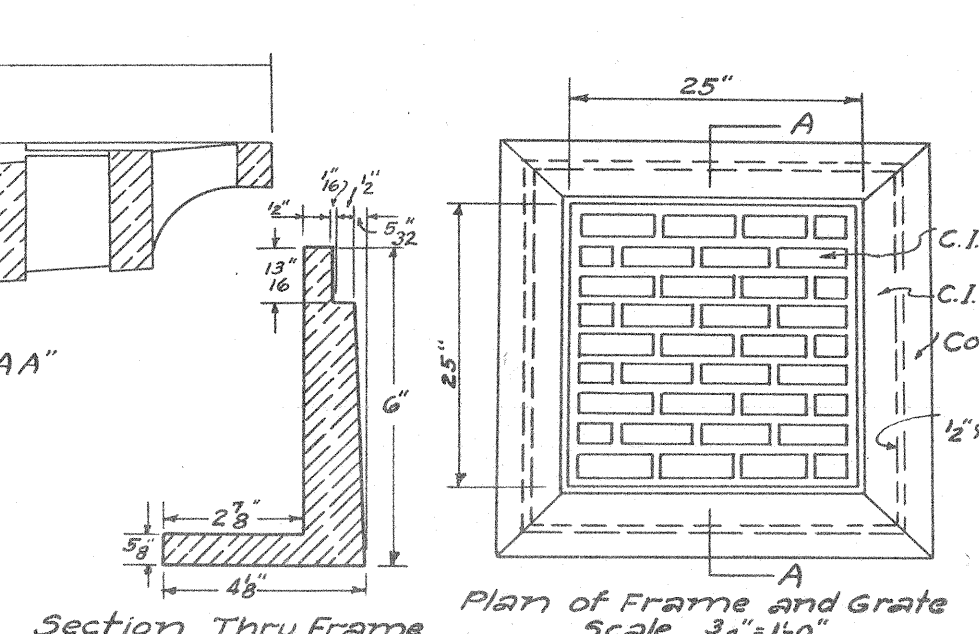
The connections to City of Columbia Sewers shown hereon are hereby approved
W. S. Tomlinson, City Engr.

Tomlinson Engineering Co.
Columbia, S.C.
Engineers

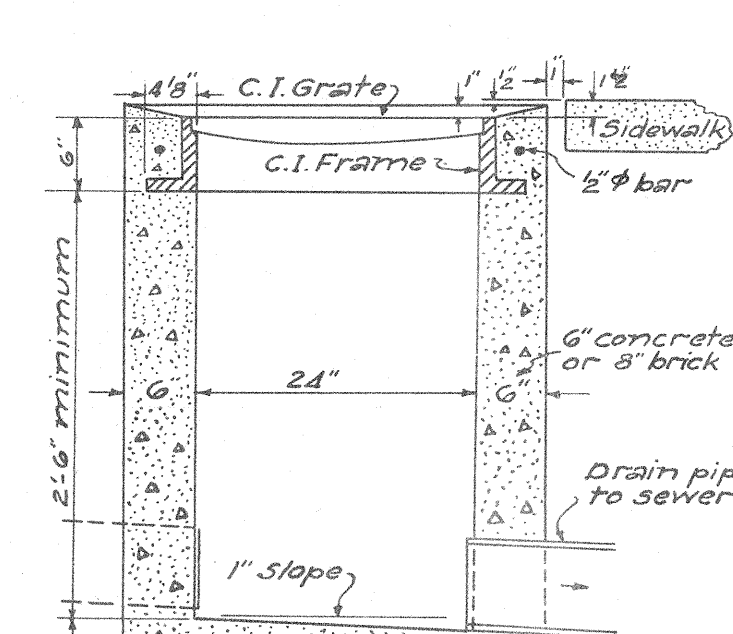
- Legend
- Existing Storm Sewers
 - Existing Sanitary Sewers
 - Storm Sewers
 - Sanitary Sewers
 - Manholes
 - Catch Basins (Type B)
 - Water Mains
 - Gas Mains
 - Gate Valves



NOTE: All utility structures City of Columbia, S.C. standard

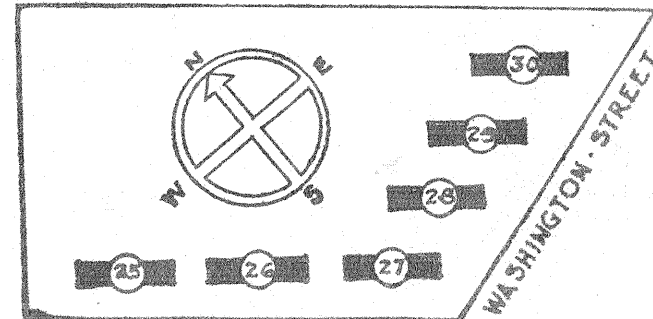


DETAILS OF TYPE "B" CATCH BASIN



Location of Type "B" Catch Basin At Sidewalk Intersection Scale 1/4"=1'0"

KEY PLAN



SHEET TITLE		GENERAL SITE PLAN	
BUILDINGS - 25-26-27-28-29-30		GONZALES GARDENS EXTENSION	
LOW RENT HOUSING PROJECT, COLUMBIA, S.C.		DEVELOPED BY	
THE HOUSING AUTHORITY OF THE CITY OF COLUMBIA, S.C.		JAMES B. LIOUHAUT	
UNDER LOAN CONTRACT WITH		COLUMBIA S.C.	
FEDERAL PUBLIC HOUSING AUTHORITY		ARCHITECT	
CHECKED:	APPROVED BY:	DATE:	DATE:
DATE:	ADMINISTRATOR	DATE:	DATE:
REVISIONS:	APPROVED BY:	DATE:	DATE:
DATE:	CHAIRMAN	DATE:	DATE:
DATE:	JAMES B. LIOUHAUT	DATE:	DATE:
DATE:	COLUMBIA S.C.	DATE:	DATE:
DATE:	ARCHITECT	DATE:	DATE: