

# **SITE SPECIFIC PLAN**

## **PART 2, SCORERP**



# **H. B. ROBINSON STEAM ELECTRIC PLANT**

**October 2011**



**H. B. ROBINSON STEAM ELECTRIC PLANT**  
**PART 2, SCORERP**  
**TABLE OF CONTENTS**

---

<u>HEADING</u>	<u>PAGE</u>
I. Introduction.....	2-1
II. Purpose .....	2-1
III. Situation and Assumptions .....	2-1
A. Situation.....	2-1
B. Assumptions .....	2-2
IV. Concept of Operations .....	2-2
A. General.....	2-2
B. Specific .....	2-2
1. Alert and Notification .....	2-2
2. State Emergency Operations Center (SEOC) .....	2-3
3. Local .....	2-3
4. Traffic Management .....	2-3
5. Radiological Monitoring and Decontamination .....	2-4
6. Evacuation .....	2-4
7. Radiological Exposure Control.....	2-8
8. Transportation.....	2-8
9. Medical .....	2-8
10. Communications .....	2-8
11. Training.....	2-9
12. Drills and Exercises .....	2-9
V. Organization and Assignment of Responsibilities.....	2-10
VI. Administration and Logistics.....	2-10
VII. Direction and Control .....	2-10
A. SEOC .....	2-10
B. County Emergency Operations Centers.....	2-11
C. H.B. Robinson Steam Electric Plant.....	2-11
Table to Figure 1 - HBRSEP 10-Mile EPZ Map .....	2-12

<u>HEADING</u>	<u>PAGE</u>
Figure 1 - HBRSEP 10-Mile EPZ Map .....	2-13
Figure 2 - HBRSEP 50 Mile Ingestion Exposure Pathway Emergency Planning Zone .....	2-14
Figure 3 - HBRSEP10-Mile EPZ Population Distribution Map.....	2-15
Figure 4 - Organization Relationships .....	2-16
Annex 1 - Alert and Notification .....	2-1-1
Attachment A- State Emergency Alert System for Florence Operational Area .....	2-A-1
Annex 2 – Reception Centers and Shelters.....	2-2-1
Attachment A- Primary and Backup Shelters and Capacities.....	2-2-A-1
Annex 3 - Medical and Public Health Support .....	2-3-1
Attachment A- Letter of Agreement with Carolina Pines Regional Medical Center .....	2-3-A-1
Attachment B- Letter of Agreement with Chesterfield General Hospital .....	2-3-B-1
Attachment C- Map to Primary Hospital .....	2-3-C-1
Attachment D- Map to Back-up Hospital .....	2-3-D-1

**H. B. ROBINSON STEAM ELECTRIC PLANT  
PART 2, SCORERP  
SITE SPECIFIC PLAN**

---

**I. INTRODUCTION**

The H.B. Robinson Steam Electric Plant (HBRSEP) Site Specific Plan, Part 2, South Carolina Operational Radiological Emergency Response Plan (SCORERP) provides for the guidance, coordination and utilization of state and other resources in support of local governments in the event of a nuclear incident at HBRSEP. The HBRSEP Site Specific Plan forms an integral part of the SCORERP and addresses matters pertaining directly to HBRSEP not already addressed in the SCORERP Basic Plan.

**II. PURPOSE**

To protect the populace and property in areas that may be affected by a radiological incident at HBRSEP and to provide for off-site recovery.

**III. SITUATION AND ASSUMPTIONS**

A. Situation

1. HBRSEP is located due west of the Lake Robinson Dam in Darlington County. The geographic coordinates are 34° 24' 2" North Latitude, 80° 9' 5" West Longitude. HBRSEP is owned and operated by Progress Energy Carolinas whose corporate headquarters is in Raleigh, North Carolina.
2. In operation since March 1971, HBRSEP has one pressurized water reactor that was manufactured by the Westinghouse Corporation. HBRSEP has a production capability of 710 megawatts of power.
3. Portions of Darlington, Lee and Chesterfield counties are within the 10-mile Emergency Planning Zone (EPZ) (See Figure 1). All of the affected counties have formulated detailed radiological emergency response annexes as part of their County Emergency Operations Plans (EOPs), and these annexes fully support the operational framework of the SCORERP.
4. Darlington, Chesterfield, Lee, Kershaw, Marlboro, Dillon, Marion, Florence, Williamsburg, Clarendon, Sumter, Richland, Fairfield, Lancaster and Chester counties in South Carolina, along with Anson, Robeson, Richmond, Union and Scotland counties in North Carolina, lie within the 50-mile Ingestion Exposure Pathway Emergency Planning Zone (IPZ) (See Figure 2).
5. HBRSEP prevailing winds are from the southwest.

**B. Assumptions**

1. A radiological incident could occur at HBRSEP that may cause an off-site hazard to residents and property. Planning for a radiological incident will facilitate an effective response.
2. Retention of existing licenses for operating Nuclear Power Plants (NPP) is dependent on effective emergency operations of state/local jurisdictions and of the licensee, in accordance with NUREG-0654, FEMA-REP-1 REV.1, 1980.
3. A radiological incident at HBRSEP that presents off-site radiological hazards will involve the governments of the three counties within the 10-mile EPZ. Therefore, state government will be required to provide direction, coordination and support in accordance with the State Code of Regulations 58-1 and 58-101.

**IV. CONCEPT OF OPERATIONS**

**A. General**

Chesterfield, Darlington, Florence and Lee counties and the South Carolina Emergency Management Division (SCEMD) under the direction of the Governor will conduct the off-site response to a radiological incident at the HBRSEP. The Governor, through the Director, SCEMD, and the State Emergency Operations Center (SEOC) will exercise direction and control of state emergency operations. The Director, SCEMD, will coordinate all state agencies, departments and local emergency response organizations mobilized pursuant to this plan. To assure adequate response and efficient use of state personnel and other resources, State Emergency Support Functions (ESFs) which correlate to the ESFs of the National Response Framework (NRF) have been designated. ESF responsibilities and procedures are contained in the South Carolina Emergency Operations Plan (SCEOP) and its' supporting Standard Operating Procedures (SOPs). Federal response to a radiological incident at HBRSEP in support of the State will be accomplished under the provisions of the Federal Radiological Emergency Response Plan and the NRF.

**B. Specific**

1. Alert and Notification:
  - a. See Annex 1.

Alert and Notification procedures are designed not only to inform and instruct the populace in emergency planning zones, but also to notify federal, state and local Radiological Emergency Response (RER) forces. In the event of an incident at HBRSEP, the primary means for notifying off-site response forces is the Selective Signaling System (SSS), a dedicated teleconferencing telephone network. Backup systems for the

SSS are commercial telephone and the Local Government Radio (LGR.) A fixed siren system is the primary means of alerting the public within the 10-mile EPZ. Emergency protective action instructions will be broadcast over the Emergency Alert System (EAS).

2. State Emergency Operations Center (SEOC)

- a. The SEOC, 2779 Fish Hatchery Road, West Columbia, SC will be activated upon notification of an Alert Emergency Classification Level (ECL). Direction and control of emergency response forces will emanate from the SEOC.
- b. South Carolina's Department of Health and Environmental Control (DHEC), under the auspices of ESF 8 and 10, will be co-located in the SEOC. A DHEC technical representative will also be dispatched to the HBRSEP Emergency Operations Facility (EOF) located at 3581 W. Entrance Rd. Hartsville, SC 29550 (See Figure 1).
- c. Progress Energy Carolinas will provide a technical representative to the SEOC. SCEMD representatives will be dispatched to the HBRSEP EOF and the Progress Energy Carolinas Joint Information Center (JIC) located at 1775 Mechanicsville Road, Florence, SC 29501 (See Figure 1).

3. Local

County /Municipal governments are responsible for local radiological emergency response within their jurisdictions, except for technical radiological assessment. Based upon requests and verification of available resources by SEOC personnel, additional assets may be furnished to aid local agencies.

4. Traffic Management

- a. Upon declaration of a Site Area Emergency, ESF 16, (Emergency Traffic Management) led by the South Carolina Highway Patrol (SCHP), will coordinate the occupation of all Traffic Control Points (TCPs) by state and local law enforcement officers within the 10-mile EPZ. The purpose is to provide assistance during an evacuation and prevent access to restricted areas. TCP locations are depicted in Figure 1.
- b. The SC Department of Natural Resources (DNR) will patrol Lake Robinson to prevent water transportation access to the facility.
- c. Progress Energy Carolinas security personnel will control entrance to the site proper, including entrance to the site EOF and JIC.

- d. Only pre-designated forms of identification will be honored at security check points as outlined in Basic Plan, Attachment D..
  - e. Local authorities are responsible for security and traffic control within their jurisdictions during all phases of a radiological incident. ESF 16, located in the SEOC, will coordinate requests from local authorities when reinforcements are required.
5. Radiological Monitoring and Decontamination:
- a. See Basic Plan, Annex 6.
  - b. Properly-trained county teams will conduct radiological monitoring and decontamination of evacuees and emergency workers with technical assistance provided by DHEC, if required.
  - c. Chesterfield, Darlington, Florence and Lee Counties have designated radiological monitoring and decontamination points. The location of each monitoring and decontamination point is contained in county EOPs.
6. Evacuation
- a. When a State of Emergency has been declared, the Governor may issue orders to evacuate all or portions of the 10-mile EPZ surrounding HBRSEP (See Figure 1). Orders for evacuation of the 2-mile EPZ will usually precede orders for evacuation of other zones within the 10-mile EPZ.
  - b. Evacuation will normally be ordered at the General Emergency ECL. Evacuation may be ordered at the Site Area Emergency or Alert ECLs if the potential for further degradation of plant conditions appears imminent.
  - c. During a fast-breaking event, HBRSEP officials may recommend evacuation to county authorities who may then recommend and coordinate the evacuation of impacted zones.
  - d. The Sheriff (as Chief Law Enforcement Officer of the affected county) will, in coordination with the SCHP and other law enforcement agencies, coordinate evacuation activities in accordance with the affected county EOP.
  - e. Residential population
    - (1) Population Densities and Evacuation Times:



<u>Zone</u>	<u>Population</u>	Evacuation Times	
		<u>Normal Conditions</u>	<u>Adverse Conditions</u>
A-0	2168	2:50	3:00
A-1	669	2:40	2:40
A-2	1208	2:40	2:40
B-1	15,742	3:40	4:40
B-2	5,749	2:40	2:40
C-1	2,445	2:40	2:40
C-2	1,946	2:40	2:40
D-1	894	2:40	2:40
D-2	1,239	2:40	2:40
E-1	345	2:40	2:40
E-2	2,113	2:40	2:40
Entire EPZ	34,518	3:40	4:40

(2) Evacuation Confirmation Time 5-6 Hours.

(3) Population Distribution Map (See Figure 3).

f. Evacuation Zones, Landmark and Boundary Descriptions:

<b>Zone</b>	<b>Landmark Descriptions</b>	<b>Boundary Descriptions</b>
A-O	Includes the areas of: Pineridge Community, Clyde Community; Hidden Heights Subdivision; Hall's Grocery; Easterling's Landing, Atkinson Landing, Johnson Landing, Hall's Crossroads; Segar's Mill; Wildwood Subdivision and Shadow Moss Subdivision.	In Darlington County, North by the Darlington-Chesterfield County line; East by Lakeview Boulevard, West Old Camden Rd Whipporwill Rd.; New Market Rd.; West Bobo Newsome Hwy (SC 151); South by Westover Dr.; West by Clyde Rd.; West along Rancho Rd. to Chesterfield County line.
A-1	In Chesterfield County: Prospect Church, Spring Branch Church; East bank of Lake Robinson to Darlington County line.	North by SR-346 (Morrison Bridge Road); East by SR-29 (Ruby-Hartsville Road); South by Chesterfield-Darlington County line West by Lake Robinson to include the lake.
A-2	In Chesterfield County: McKinnon, Middendorf; Zion Hill Church; Little Beaver Dam Branch; Cedar Creek; Ousleydale Church.	North by both sides Wire Road (unnumbered county road); East by both sides SR-29 (Ruby-Hartsville Road); both sides SR-404, both sides SC-102;

Zone	Landmark Descriptions	Boundary Descriptions
A-2 continued		South by Chesterfield-Darlington County line; West by SR-29 (Ruby-Hartsville Road), SR-346 (Morrison Bridge Road), SR-46 and SR-63.
B-1	Includes the areas of: Pond Hollow Community; Club Colony Subdivision; Northwood Subdivision, Lakeview Community; Golf Course Road; SONOCO; Products Company; Hunter's Pointe Subdivision; Action Ford Dealership, Kalmia Subdivision; Flynn's Crossroads; Progressive Village; Carriage House, Timberchase Subdivision; Morningside Assisted Living; Scott Center; Saleeby Center; Carolina Pines Regional Medical Center; Entire area inside Hartsville City limits, Hartsville Airport Rd.	In Darlington County: North by Darlington-County line; Chesterfield East by Ousleydale Road, Patrick Highway; East Home Avenue; US-15 Bypass (Marquis Hwy); to South Fourth Street; West Bobo Newsome Hwy to New Market Road; Lakeview Boulevard to Chesterfield County line.
B-2	Includes the areas of: Patrick Hwy and East Old Camden Crossroad, Byrdtown Community, McIntosh's, Millpond, Chapman's pond; Centerville Community, Auburn Community; Rosa Lee's Crossroads, Lewis's Crossroads; Swift Creek Fire Department, Darlington International Dragstrip; Lakewood Subdivision, Morton Community; and Ousleydale Road.	In Darlington County: North by Darlington-Chesterfield County line; East by Bethlehem Road, US-15N (Hartsville Hwy); to North Center Road; to East Bobo Newsome Highway; to Flinn's Crossroads, to South Fourth Street; to US-15 Bypass (Marquis Highway); to East Home Ave, to Patrick Hwy; Ousleydale Road; to the Chesterfield County line.
C-1	Includes areas of: Kellytown Community; Highpoint Community; CVS Shopping Plaza, Pam's Restaurant, Harley Circle; Forest Hills Subdivision; Botany Woods Subdivision; Cassidy's Trailer Park; Rolling Hills.	In Darlington County: North and east by Clyde Road; Westover Drive; east by W. Bobo Newsome Hwy; South Fifth Street; Highpoint Road; West by Darlington-Lee County line, Stuckey Bottom Road, Hillcrest Road to Clyde Road.
C-2	Includes areas of: Roller Bearing of SC; Lee's Crossroad, Thomas Hart Academy; Indian Branch Road, Register's Crossroads, Lydia Community; Marco Millpond, Oates Community, Tremont Subdivision; West Seven Pines Road.	In Darlington County: North by Highpoint Road; to South Fifth Street; east by East Bobo Newsome Highway; to Faith Road; to west on East Lydia Hwy; to Bethel Road; to Indian Branch Road, to Oates Highway(Hwy 403); to West Seven Pines Road; to Una Road to the Darlington-Lee County line.

Zone	Landmark Descriptions	Boundary Descriptions
D-1	Includes areas of: Beaverdam Acres Community; Grant's Crossroads; Hannah Pond Community; Ashland Community; Clyde School Road.	In Darlington County: North by Darlington-Chesterfield County line; East by Rancho Road, to west Old Camden Road; to Clyde Road; to Hillcrest Road; to Stuckey Bottom, Road; to south by the Darlington-Lee County line, to the west by Darlington-Lee-Kershaw County lines (Lynches River).
D-2	In Lee County: Ashland, Stokes Bridge and Turkey Creek communities.	North and East by Lee-Darlington County line; South by BS US-15; West by Lynches River, BS SR-26, BS SC-341, BS SR-339, BS SR-188, SR-50 to Lee-Kershaw County line.
E-1	In Chesterfield County: Leland, Tabernacle Church, King's Mill Pond; New Hope Church; Union Church; east bank of Lake Robinson to Darlington County Line.	North by BS SR-172 (Kings Mill Pond Road); SR-711 (Shady Grove Church Road); SC-151; SR-346 (Morrison Bridge Road); east by Lake Robinson; south by Chesterfield-Darlington County line; west by SR-31 (Union Church Road).
E-2	In Chesterfield County: Middendorf Church; Little Alligator Creek; Lower Alligator Creek; National Wildlife Refuge Headquarters; Ingrams; McBee Lookout Tower; McBee; Sandhill State Forest; Providence Church; Missionary Creek; area south of Rt. 294.	North by BS Wire Road (Unnumbered county road); east by SR-63, SR-46 (Middendorf Road); south by SR-346 (Morrison Bridge Road), SC-151, SR-711 (Shady Grove Church; Road), SR-172 (Kings Mill Pond Road); SR-31 (Union Church Road) and Chesterfield-Darlington County line.

- g. Chesterfield, Darlington and Lee Counties have designated evacuation routes for persons living, working, and transiting the 10-mile EPZ. These routes lead to reception centers/shelter areas (See Figure 1).
- h. The affected county/counties will provide transportation to those evacuees who are without transportation and to homebound persons requiring special transportation. State assistance may be requested. Special transportation needs are addressed in the Chesterfield, Darlington and Lee County EOPs.
- i. All evacuees will be processed through shelters or reception centers as outlined in Annex B. Each evacuee, including those who elect not to accept

temporary shelters, will be monitored, registered and processed. For control and re-entry purposes, each county will maintain records for contacting evacuees. Temporary housing should be located at least five miles from the EPZ outer boundary (15 miles from the nuclear facility site).

- j. Evacuees may be permitted to enter evacuated areas for special needs, such as feeding and watering livestock, but only after coordination with their county EOC.

7. Radiological Exposure Control:

See Basic Plan, Annex 6.

8. Transportation:

- a. The HBRSEP 10-mile EPZ is covered by an excellent all-weather road system that provides multiple primary and alternate routes for evacuation and access to the area. There are no obstacles that would impede rapid evacuation or response.
- b. Counties and municipal governments have plans for acquiring emergency transportation in the event of a radiological incident. The means for evacuating schools, hospitals, nursing homes, the homebound and residents without private transportation are identified in county plans.
- c. State transportation resources may be requested to augment county transportation requirements.

9. Medical:

- a. See Annex 3.
- b. See Basic Plan, Annex 5.

10. Communications:

- a. In the event of an emergency at HBRSEP, the site is capable of notifying state and local emergency response networks on a 24-hour basis. The Site Emergency Coordinator and/or the Emergency Response Manager is responsible for notifying the State Warning Point (SWP)/SEOC and the Chesterfield, Darlington and Lee County Warning Points or EOCs.
  - (1) Selective Signaling System (SSS) a dedicated telephone connecting the HBRSEP Control Room, Technical Support Center (TSC) and EOF with the SWP/SEOC and Chesterfield, Darlington and Lee County EOCs and County Warning Points. SSS is used to provide initial and updated information concerning HBRSEP status.

- (2) Standard commercial and satellite telephone lines.
    - (3) A radio channeled to the SCEMD Local Government Radio (LGR) Network at the HBRSEP EOF with the capability of communicating with the SEOC, counties and the DHEC Mobile Radiological Laboratory (MRL).
  - b. County Communications Officers are responsible for communications within their jurisdictions during a radiological emergency. Their responsibilities include the activation of communications systems, the maintenance and operation of the primary and alternate systems on a 24-hour basis, and reporting the system's status during an emergency. The responsible parties are:
    - (1) Darlington County: Communications Officer, responsible to the Director, Darlington County Emergency Preparedness Agency.
    - (2) Lee County: Communications Officer, responsible to the Director, Lee County Disaster Preparedness Agency.
    - (3) Chesterfield County: Communications Officer, responsible to the Director, Chesterfield County Office of Emergency Services.
  - c. Communications with local governments within the 10-mile EPZ will be tested monthly. Communications with federal emergency response organizations shall be tested quarterly. Communications between the nuclear plant, state, and local emergency operations centers, and field assessment teams shall be tested annually. Communication drills shall also include the aspect of understanding the content of messages.
11. Training:
- County directors and directors of state agencies are responsible for assuring Radiological Emergency Response (RER) training is conducted in accordance with Basic Plan, Annex 2.
12. Drills and Exercises:
- a. See Basic Plan, Annex 4.
  - b. Exercises are designed to test all elements of emergency preparedness plans pertaining to HBRSEP and the capability of support elements in the 10-mile EPZ cited in such plans. A biennial exercise will be conducted and will involve mobilizing state and local government personnel and resources adequate to verify the capability to respond to an incident scenario (simulated emergency) at HBRSEP. Federal observers will evaluate and critique the biennial exercise.

- c. Drills are supervised periods of instruction designed to test, develop and maintain skills of individuals who form a part of radiological emergency response organizations. County directors shall ensure that drills are conducted by qualified instructors in the frequency listed below.
  - (1) Communications Drills: See Basic Plan, Annex 4.
  - (2) Fire Drills: Annually, fire drills at the HBRSEP will involve the participation of one of the following community fire departments:
    - (a) Hartsville Fire Department
    - (b) Pine Ridge Fire Department
  - (3) Medical Emergency Drills:
    - (a) Annually, a simulated radiologically contaminated injured individual from the HBRSEP will be treated and transported by Lake Robinson Rescue Squad or Darlington County EMS.
    - (b) Annually, a simulated radiologically contaminated injured individual from the HBRSEP 10-mile EPZ general population will be treated and evacuated to Carolina Pines Regional Medical Center or Chesterfield General Hospital.

**V. ORGANIZATION AND ASSIGNMENT OF RESPONSIBILITIES**

- A. State (See Basic Plan, paragraph V).
- B. Local (See Chesterfield, Darlington, Florence and Lee County EOPs).
- C. Organization relationships (See Figure 3).

**VI. ADMINISTRATION AND LOGISTICS**

- A. See Section VIII, “Administration and Logistics” of the South Carolina Emergency Operations Plan (SCEOP).
- B. Counties provide their own administrative and logistic support. Requests for augmentation may be submitted in accordance with the SCEOP.

**VII. DIRECTION AND CONTROL**

- A. SEOC

The SEOC is located at 2779 Fish Hatchery Road, West Columbia, SC 29172.

**B. County Emergency Operations Centers**

1. Chesterfield County EOC is located at 201 North Page Street, Chesterfield, SC 20709.
2. Darlington County EOC is located at 1625 Harry Byrd Hwy, Darlington, SC 29532.
3. Lee County EOC is located at 119 Des Champs Street, Bishopville, SC 29010.
4. Florence County EOC is located on 6719 Friendfield Road, Effingham, SC 29541

**C. HBRSEP**

1. The EOF is also located in the EOF/TSC/Training Building. 3581 W. Entrance Rd. Hartsville, SC 29550. The alternate EOF is located at 1001 Railroad Ave. Hartsville, SC 29550.
2. The JIC is located at Progress Energy Carolinas, 1755 Mechanicsville Road, Florence, SC, approximately 2 miles east of I-95 (See Figure 1).

TABLE TO FIGURE 1—H.B. ROBINSON STEAM ELECTRIC PLANT 10-MILE EPZ MAP

Traffic Control Points	
<b><u>Chesterfield County</u></b>	<b><u>Lee County</u></b>
CH-1 US-1 and SC-151	LE-1 US-15 and SC-34
CH-2 US-1 and SC-145	LE-2 US-15 and SC-341
CH-3 SC-145 and S-13-29	
CH-4 SC-102 and US-1	
CH-5 SC-145 and SC-9 (City of Chesterfield)	
<b><u>Darlington County</u></b>	
S-1/16-A SC-151 and S16-23	
DA-1/16-B S-16-23 and S-16-39	
DA-2/16-C SC-Business 15 and SC-151	
DA-3/16-D SC-151 and US-15	
S-2/16-E US-15 and US-52/401	
S-3/16-F US-52/402 and Dovesville Hwy	
L-1/16-G SC-151 and SC-34 and US 52 Bypass	

**HBRSEP EVACUATION ROUTES**

- A-0 Darlington County**--All to SC-151 (Bobo Newsome Hwy), To Darlington, then Governor Williams Hwy to US-52 South to I-95 South to exit 160 to Florence City-County Civic Center.
- A-1 Chesterfield County**--All to S13-763 (Prospect Church Rd) to S13-29, (Ruby-Hartsville Rd ) to SC-145 to Chesterfield.
- A-2 Chesterfield County**--All to S-13-149 (Cedar Creek Church Rd.) to SC-102 to SC-145 to Chesterfield; OR S13-491 (Bullard Ford Rd. ) to S13-29 (Ruby-Hartsville Rd.) to SC-145 to Chesterfield
- B-1 Darlington County**--SC-151 to Governor Williams Highway to US-52 South to I-95 South to Exit 160 to Florence City-County Civic Center.
- B-2 Darlington County**--All to N. Fifth St and Marquis Hwy to SC-151 to Darlington to Governor Williams Hwy to US 52 South to I-95 South to Exit 160 to Florence City-County Civic Center; OR US-15 to Dovesville Hwy to Governor Williams Hwy to US-52 South to I-95 South to Exit 160 to Florence City-County Civic Center; OR Floyds Road to Governor Williams Hwy to US-52 South to I-95 South to Exit 160 to Florence City-County Civic Center; OR W. Billy Farrow Hwy to Governor Williams Hwy to US-52 South to I-95 South to Exit 160 to Florence City-County Civic Center
- C-1 Darlington County**--All to SC-151 to Darlington to Governor Williams Hwy to US-52 south to I-95 South to Exit 160B to Florence City-County Civic Center
- C-2 Darlington County**--Highway 403 to Windham's Crossroads (401) to I-20 East to Florence City-County Civic Center
- D-1 Darlington County**--All to SC-151 to Darlington to Governor Williams Hwy to US-52 South to I-95 South to Exit 160 to Florence City-County Civic Center.
- D-2 Lee County**--SC-341 to US-15 to SC-34 to Lee Central High School; OR SC-34 through Bishopville to Lee Central High School
- E-1 Chesterfield County**--S13-150 (New Hope Church Road) to S13-711 (Sowell Rd.) to SC-151 to US-1 to SC-145 to Chesterfield; OR S13-46 (Middendorf Rd.) to S-13-346 (Lake Robinson Rd.) to US-1 to SC-145 to Chesterfield; OR SC-151 to US-1 to SC-145 to Chesterfield
- E-2 Chesterfield County**--S13-296 (Old Creek Rd.) to US-1 to SC-145 to Chesterfield; OR US-1 to SC-145 to Chesterfield

See Figure 1 for school pickup points, shelters, hospitals, boat ramps and other points on the map.

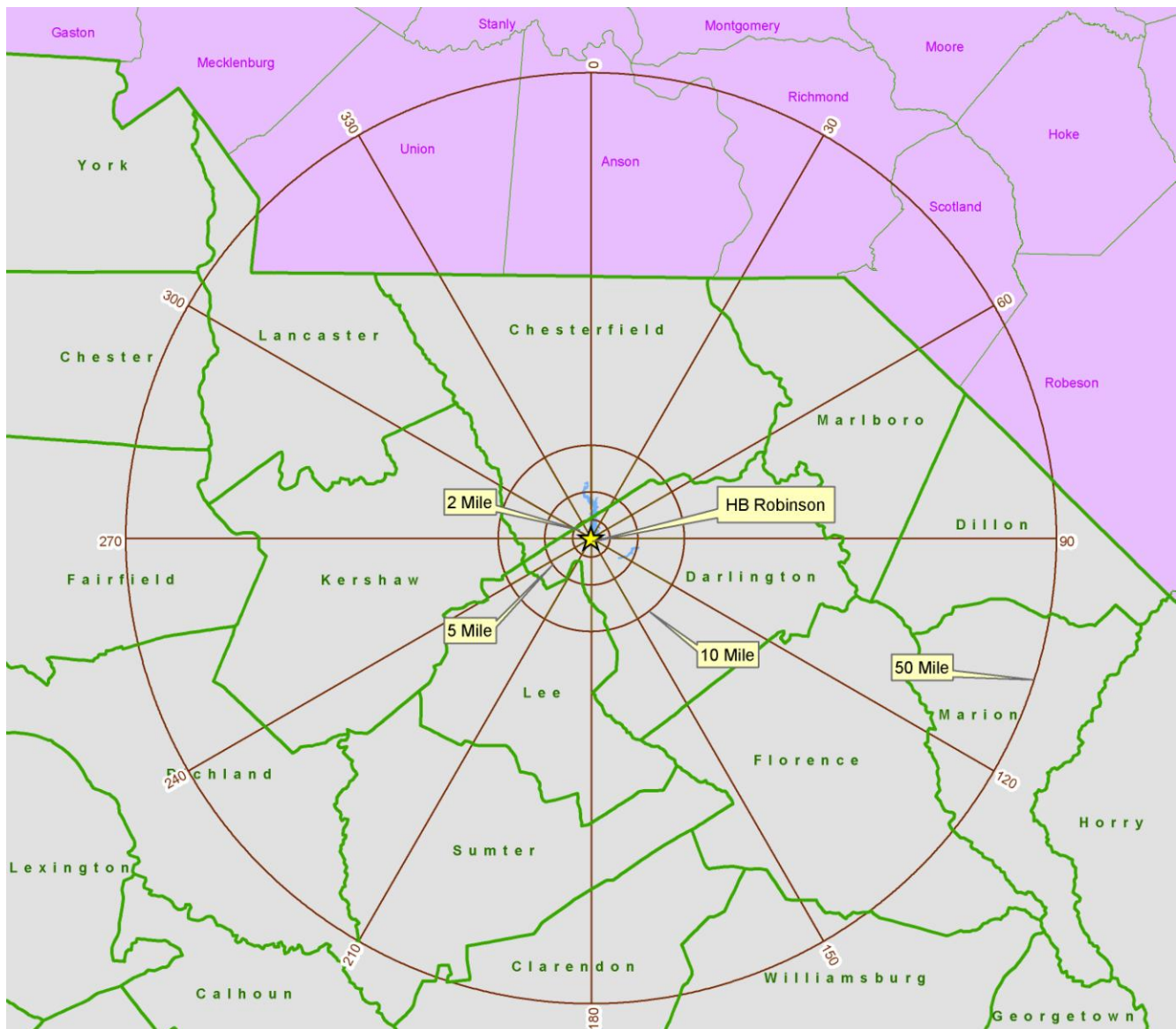


**FIGURE 1 – H.B. ROBINSON STEAM ELECTRIC PLANT 10-MILE EPZ MAP**

**INSERT**

**HB ROBINSON STEAM ELECTRIC PLANT 10-MILE EPZ MAP**

**FIGURE 2--HBRSEP 50-MILE INGESTION EXPOSURE PATHWAY EMERGENCY PLANNING ZONE**



**FIGURE 3- HBRSEP 10-MILE EPZ POPULATION DISTRIBUTION MAP**

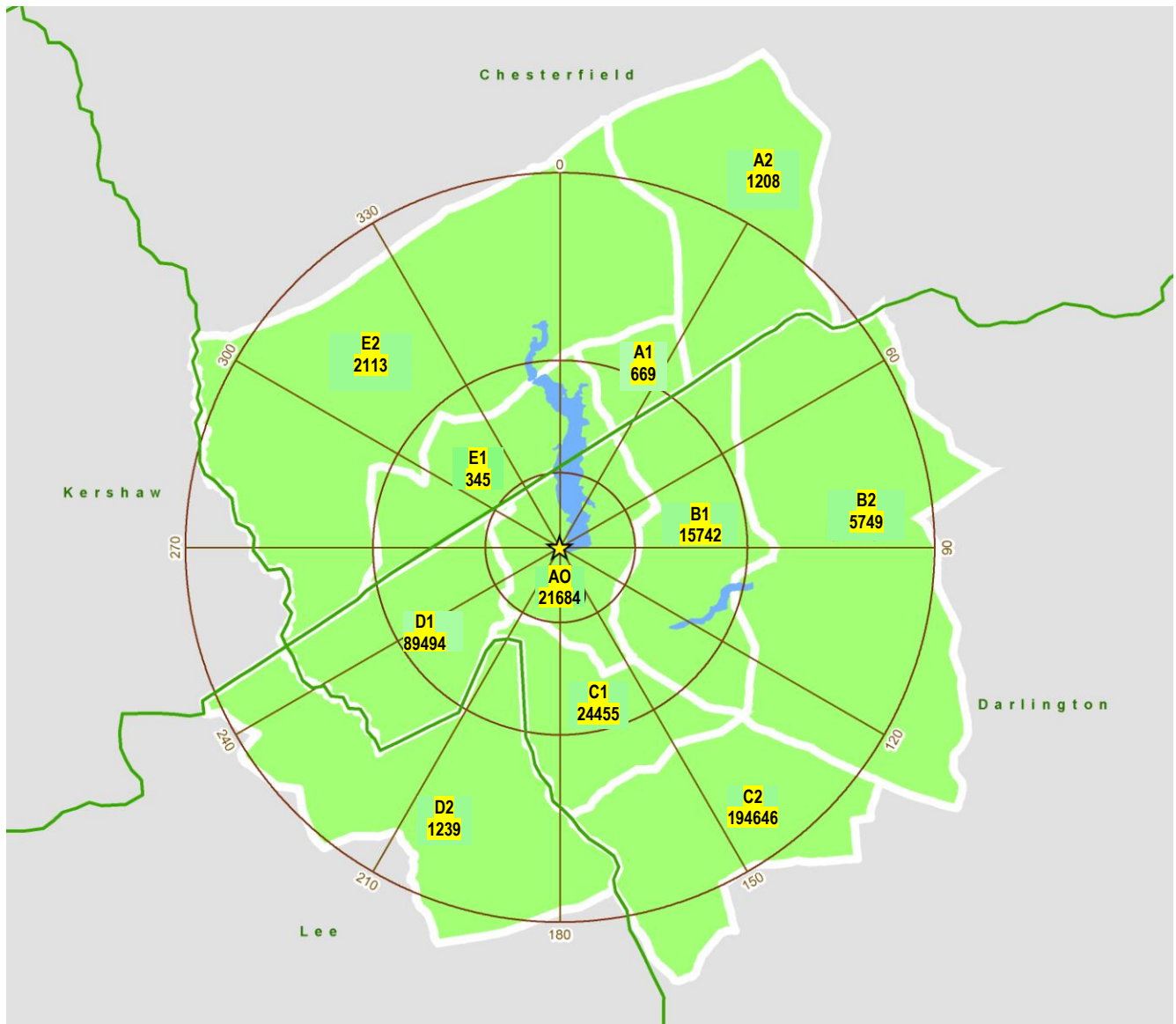
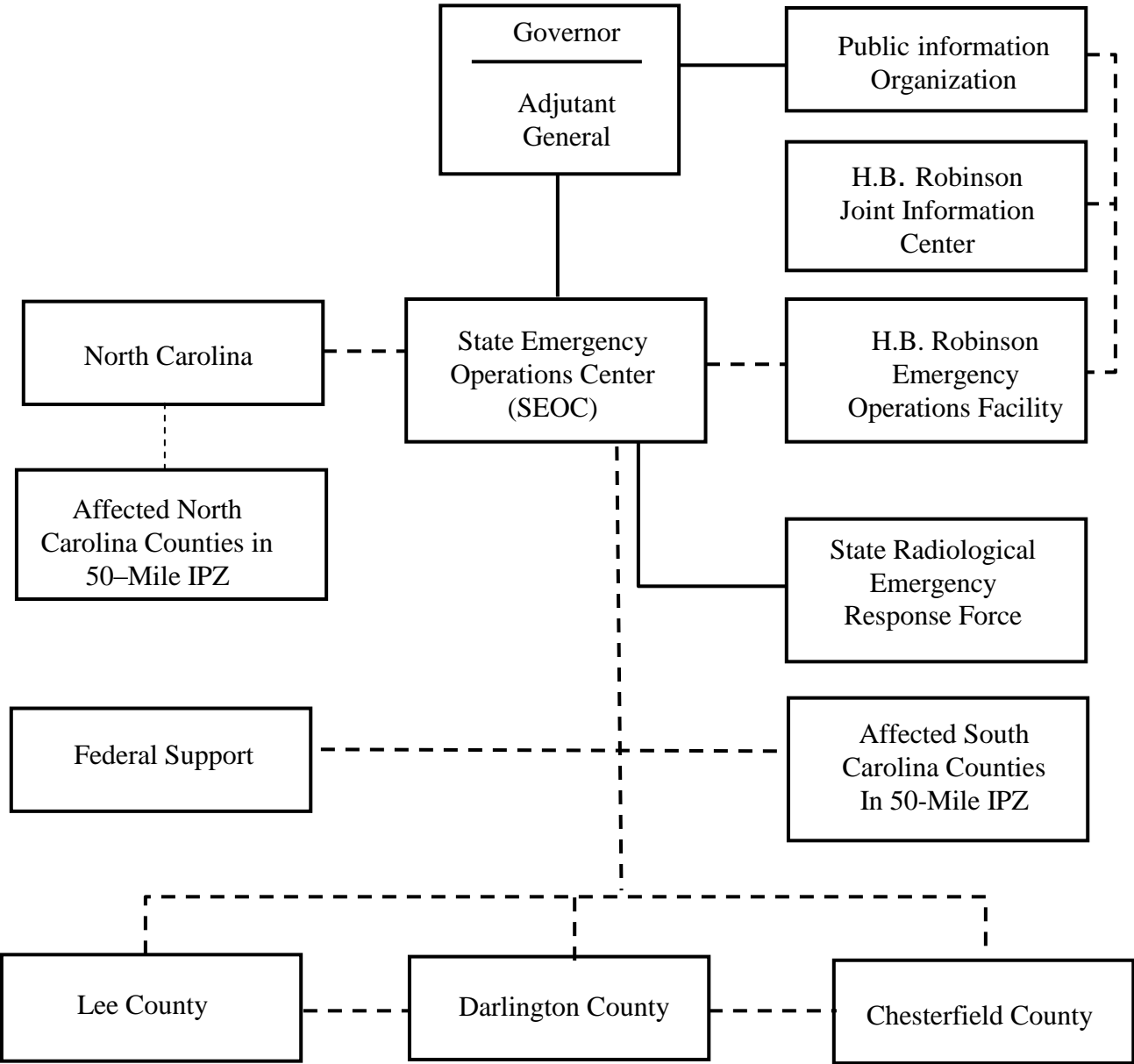


FIGURE 4 – ORGANIZATION RELATIONSHIPS



Affected counties in 50-mile EPZ:

**SOUTH CAROLINA**

Chester	Lancaster
Clarendon	Marion
Dillon	Marlboro
Fairfield	Richland
Florence	Sumter
Kershaw	Williamsburg

**NORTH CAROLINA**

Anson
Richmond
Robeson
Scotland
Union

———— Direction  
----- Control