

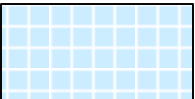
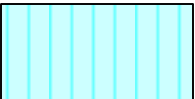
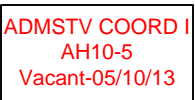


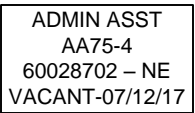
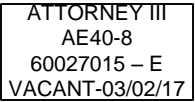
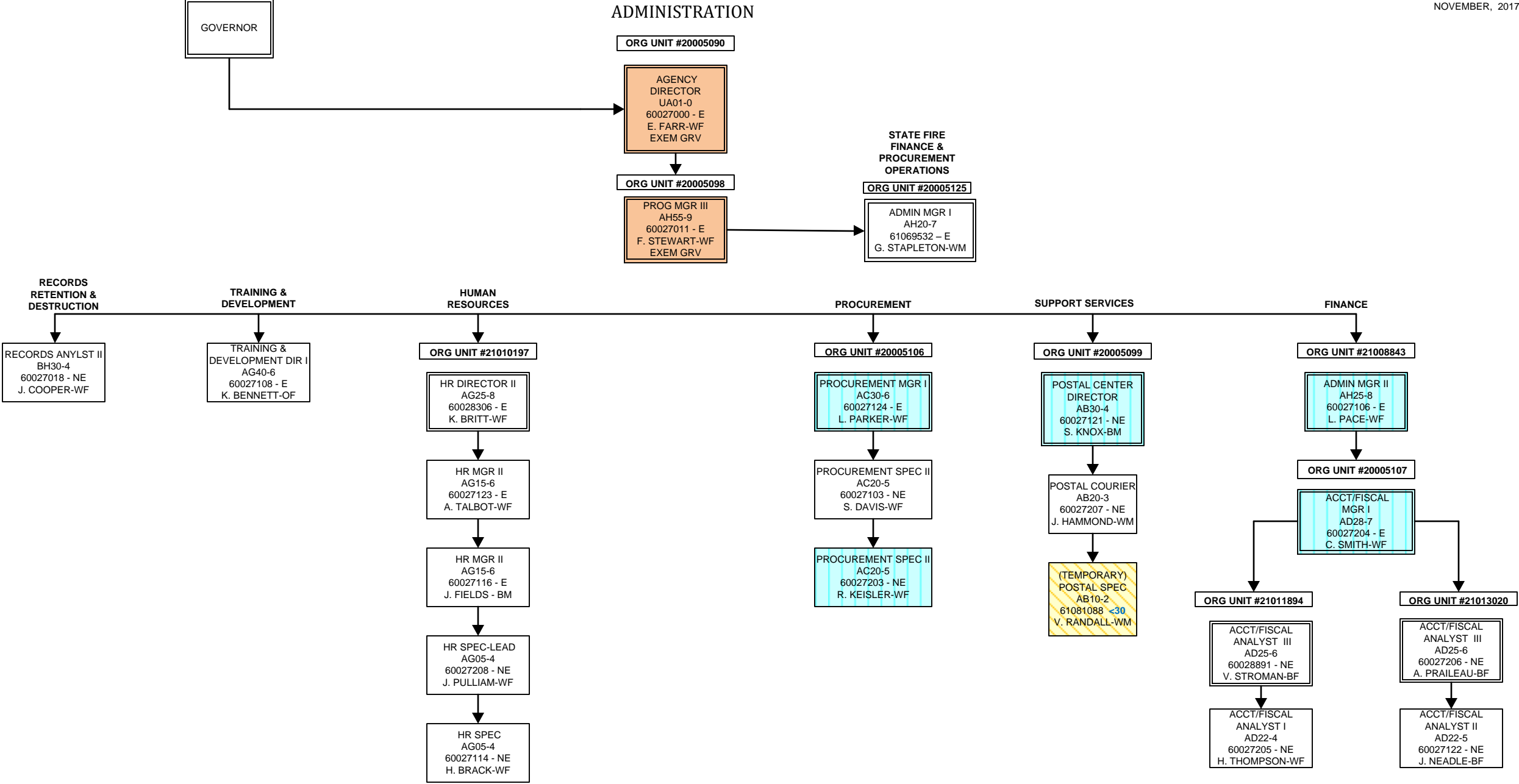


SOUTH CAROLINA
DEPARTMENT OF LABOR, LICENSING AND REGULATION
ORGANIZATIONAL CHART

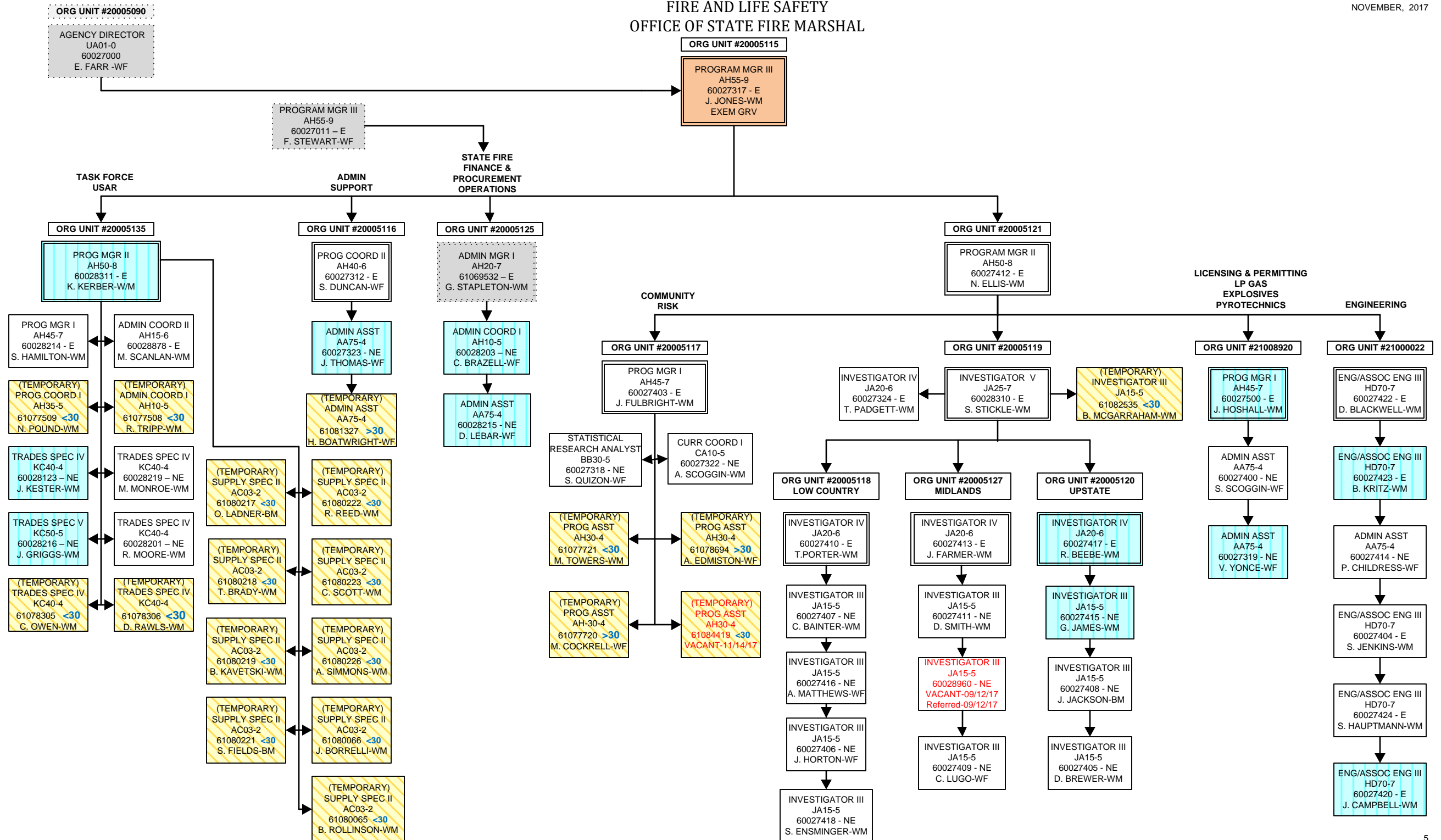
NOVEMBER 2017

**SOUTH CAROLINA
DEPARTMENT OF LABOR, LICENSING AND REGULATION
ORGANIZATIONAL CHARTS**

Light Orange Square		Employee Exempt from Grievance
Pink Diamond		TERI Employee
Light Blue Square		Employee returned after TERI or Retirement; Exempt Grv
Turquoise Vertical Stripe		Employee eligible to retire within 5 years by service or age
White Solid Red Letters		Vacant Position-Vacancy Date
Yellow Diagonal Stripe		Temporary Employee
Dark Pink Outline		Borrowed position
NE Designation		Non-exempt position
E Designation		Exempt position



FIRE AND LIFE SAFETY
OFFICE OF STATE FIRE MARSHAL



FIRE AND LIFE SAFETY
FIRE ACADEMY

NOVEMBER, 2017

ORG UNIT #20005115

PROGRAM MGR III
AH55-9
60027317 - E
J. JONES-WM

ORG UNIT #20005128

PROG MGR II
AH50-8
60028805 - E
VACANT-06/01/17
Hired-12/01/17

ORG UNIT #20005133

PROG MGR I
AH45-7
60028305 - E
L. BUSBY-WM

GROUNDS &
MAINTENANCE

ACCREDITATION

CURRICULUM

EMS
COORDINATOR

ORG UNIT #20005124

ENG/ASSOC ENG II
HD65-6
60028202 - E
VACANT-12/12/16

ORG UNIT #21009882

PROG MGR I
AH45-7
60028207 - E
G. SPINKS-WM

ORG UNIT #20005123

PROG MGR I
AH45-7
60028302 - E
B. WATTERS-WF

ORG UNIT #20005126

PROG COORD II
AH40-6
60028204 - E
VACANT-08/17/17

ORG UNIT #21014468

PROG MGR I
AH45-7
60027120 - E
T. WOJCIK-WM

ADMIN COORD I
AH10-5
60028222 - NE
K. WHITE-BF

(TEMPORARY)
EDU SPEC
CA30-4
61077843 <30
A. ESPOSITO-WM

ORG UNIT #21000446

PROG COORD II
AH40-6
60028212 - E
C. BENNETT-WM

(TEMPORARY)
EDU SPEC
CA30-4
61077772 <30
D. HANSON-WM

(TEMPORARY)
EDU SPEC
CA30-4
61077773 <30
N. MANSFIELD-WM

(TEMPORARY)
EDU SPEC
CA30-4
61078198 <30
M. DUNLAP-WM

(TEMPORARY)
EDU SPEC
CA30-4
61077770 <30
Y. MUHAMMAD-BM

ORG UNIT #21012579

PROG COORD I
AH35-5
60028209 - NE
R. SIMPSON-WM

MEDIA RESRC
SPEC II
BG60-4
60028304 - NE
J. BLACK-WM

PROG COORD I
AH35-5
60028957 - NE
W. RENKEN-WM

(TEMPORARY)
PRINTING MGR I
BD30-4
61077742 >30
F. BRANDT-WM

(TEMPORARY)
MEDIA SPEC II
BG60-4
61077743 >30
A. HIGHLAND-BF

ORG UNIT #20005122

ADMINISTRATION

ADMIN COORD I
AH10-5
60028217 - NE
S. BUSH-BF

ADMIN ASST
AA75-4
60028303 - NE
K. RIVERA-WF

ADMIN ASST
AA75-4
60028213 - NE
G. EVANS-BF

ADMIN ASST
AA75-4
60028211 - NE
A. ADAMS-BF

ORG UNIT #20005131

HOSPITALITY

FOOD SERV SPEC V
KB25-5
60028224 - NE
C. JERMSTAD-WM

BLDG/GRDS SPEC III
KA15-3
60028210 - NE
S. WILLIAMS-BM

(TEMPORARY)
FOOD SVC SPEC III
KB15-3 <30
61075479
D. CREPAEU-WM

ORG UNIT #21001228

REGION 5
CHARLESTON

PROG COORD I
AH35-5
60028206 - NE
E. ADAMS - WM

ADMIN ASST
AA75-4
60028301 - NE
A. WILLIAMSON-WF

ORG UNIT #20005129

REGION 1 GREENVILLE

PROG COORD I
AH35-5
60028221 - NE
D. DUNCAN-WM

ADMIN ASST
AA75-4
60028220 - NE
C. BAKER-WF

(TEMPORARY)
FSO II
JC70-4
29 TEMPS
61081907 <30
61081908 <30
61081909 <30
61081910 <30
VACANT-07/27/17
Hired-12/18/17

(TEMPORARY)
FSO II
JC70-4
61081852 <30
61081865 <30
61081866 <30
VACANT-07/27/17
Hired-12/18/17

ORG UNIT #21011927

REGION 2 YORK CO.

PROG COORD I
AH35-5
60028122 - NE
J. MCCARLEY-WM
EXEM GRV

(TEMPORARY)
FSO II
JC70-4
18 TEMPS
61081902 <30
61081903 <30
16081904 <30
VACANT-07/27/17
Referred-09/6/17

(TEMPORARY)
FSO II
JC70-4
61081897 <30
61081898 <30
61081899 <30
61081900 <30
61081901 <30
VACANT-07/27/17
Referred-09/6/17

ORG UNIT #21011926

REGION 6
AIKEN

PROG COORD I
AH35-5
60028307 - NE
M. TURNER-WF

ORG UNIT #20005132

REGION 4 FLORENCE

PROG COORD I
AH35-5
60028300 - NE
B. CASSIDY-WM
EXEM GRV

ADMIN ASST
AA75-4
60028205 - NE
C. CANUP-WF

(TEMPORARY)
FSO II
JC70-4
18 TEMPS
61081897 <30
61081898 <30
61081899 <30
61081900 <30
61081901 <30
VACANT-07/27/17
Referred-09/6/17

(TEMPORARY)
FSO II
JC70-4
61081852 <30
61081865 <30
61081866 <30
VACANT-07/27/17
Hired-12/18/17

ORG UNIT #20005130

PROG COORD II
AH40-6
60028223 - E
T. BROWN-BM

PROG COORD I
AH35-5
60028121 - NE
M. REGAL-WM

PROG COORD I
AH35-5
60028208 - NE
S. DAVIS-WM

PROG COORD I
AH35-5
60028124 - NE
M. GEORGE-WM
EXEM GRV

(TEMPORARY)
PROG COORD I
AH40-6
61077868 >30
J. HEADRICK-WM

(TEMPORARY)
FSO I
JC60-3
1 TEMP
FSO II
JC70-4
30 TEMPS
FSO III
JC80-5
8 TEMPS

PROG COORD I
AH35-5
60028952 - NE
K. WATSON-BF

PROG COORD I
AH35-5
60028200 - NE
D. CROSSLAND-WM
EXEM GRV

(TEMPORARY)
EQUIP OPER III
KD45-3
61077794 >30
T. SHARPE-WM

(TEMPORARY)
EQUIP OPER III
KD45-3
61081094 >30
J. GADSON-BM

PROG COORD II
AH40-6
60027421 - NE
VACANT-05/19/17
Hired-12/19/17

(TEMPORARY)
INSTRU/TRAIN COORD II
AG35-5
61077065 <30
A. SIMMONS-WM

(TEMPORARY)
PROG COORD I
AH35-5
61081563 <30
C. GAINEY-WM

ORG UNIT #21009052

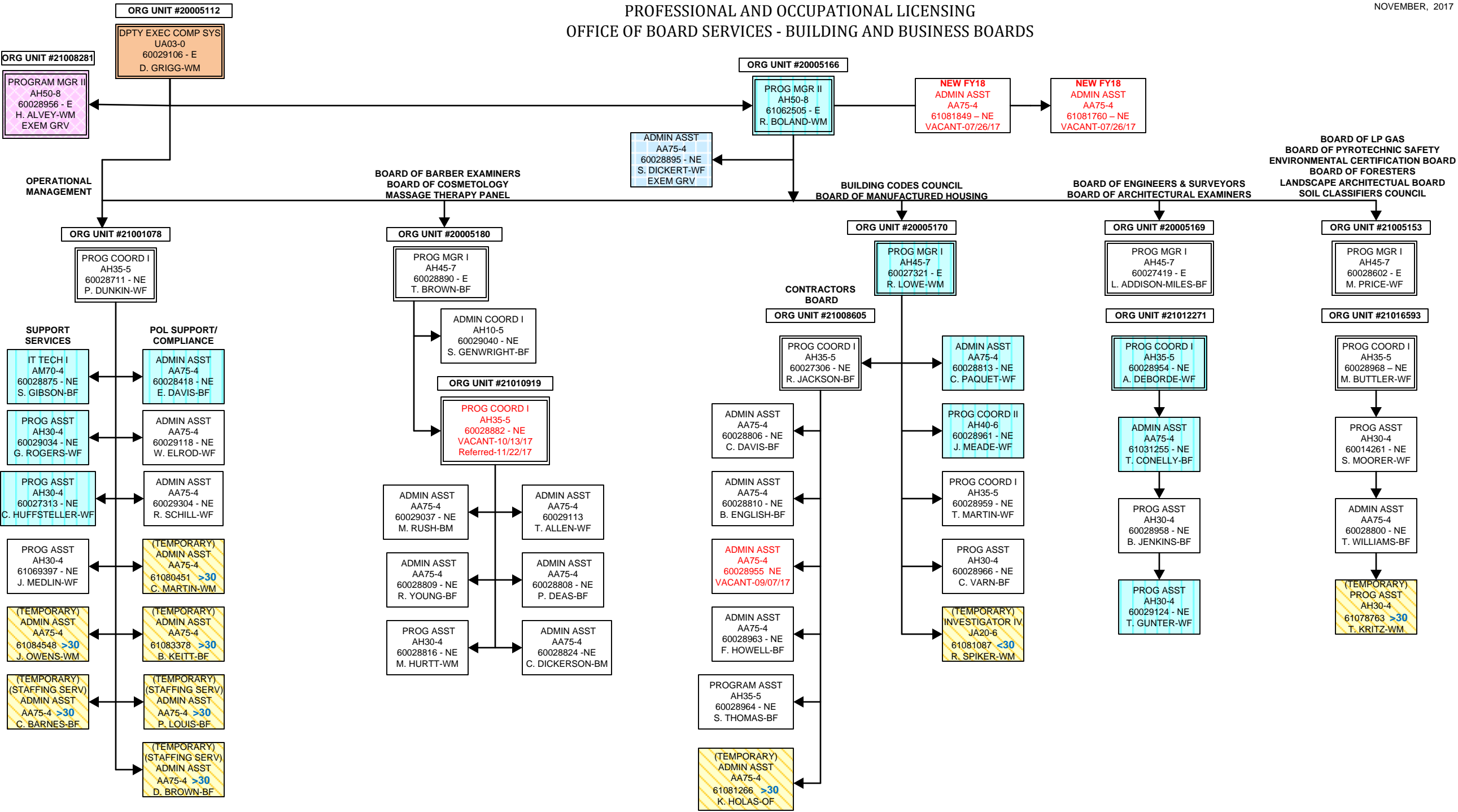
PROG COORD I
AH35-5
60028200 - NE
D. CROSSLAND-WM
EXEM GRV

(TEMPORARY)
EQUIP OPER III
KD45-3
61077794 >30
T. SHARPE-WM

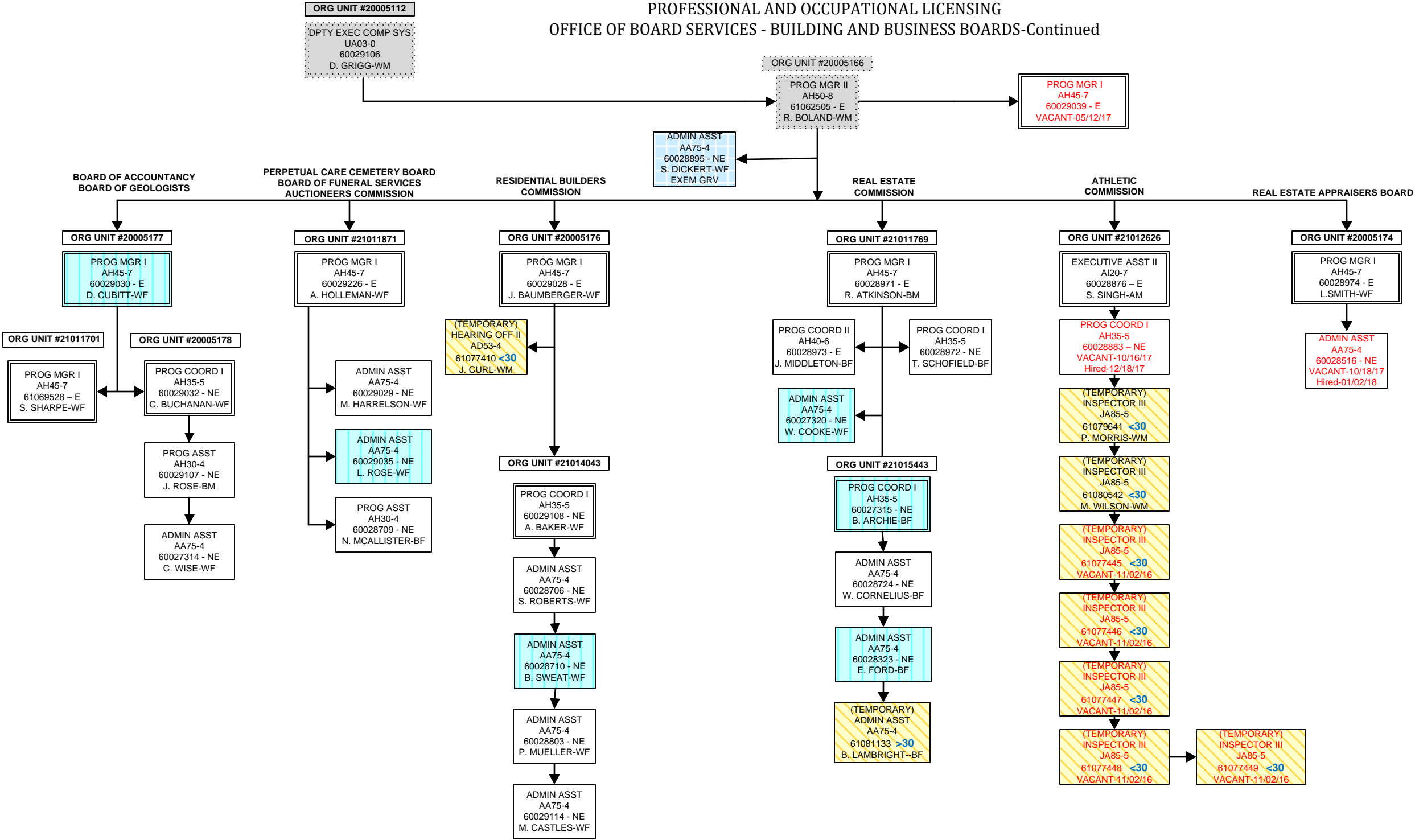
(TEMPORARY)
EQUIP OPER III
KD45-3
61081094 >30
J. GADSON-BM

(TEMPORARY)
FSO II
JC70-4
10 TEMPS
FSO III
JC80-5
13 TEMPS

PROFESSIONAL AND OCCUPATIONAL LICENSING
OFFICE OF BOARD SERVICES - BUILDING AND BUSINESS BOARDS

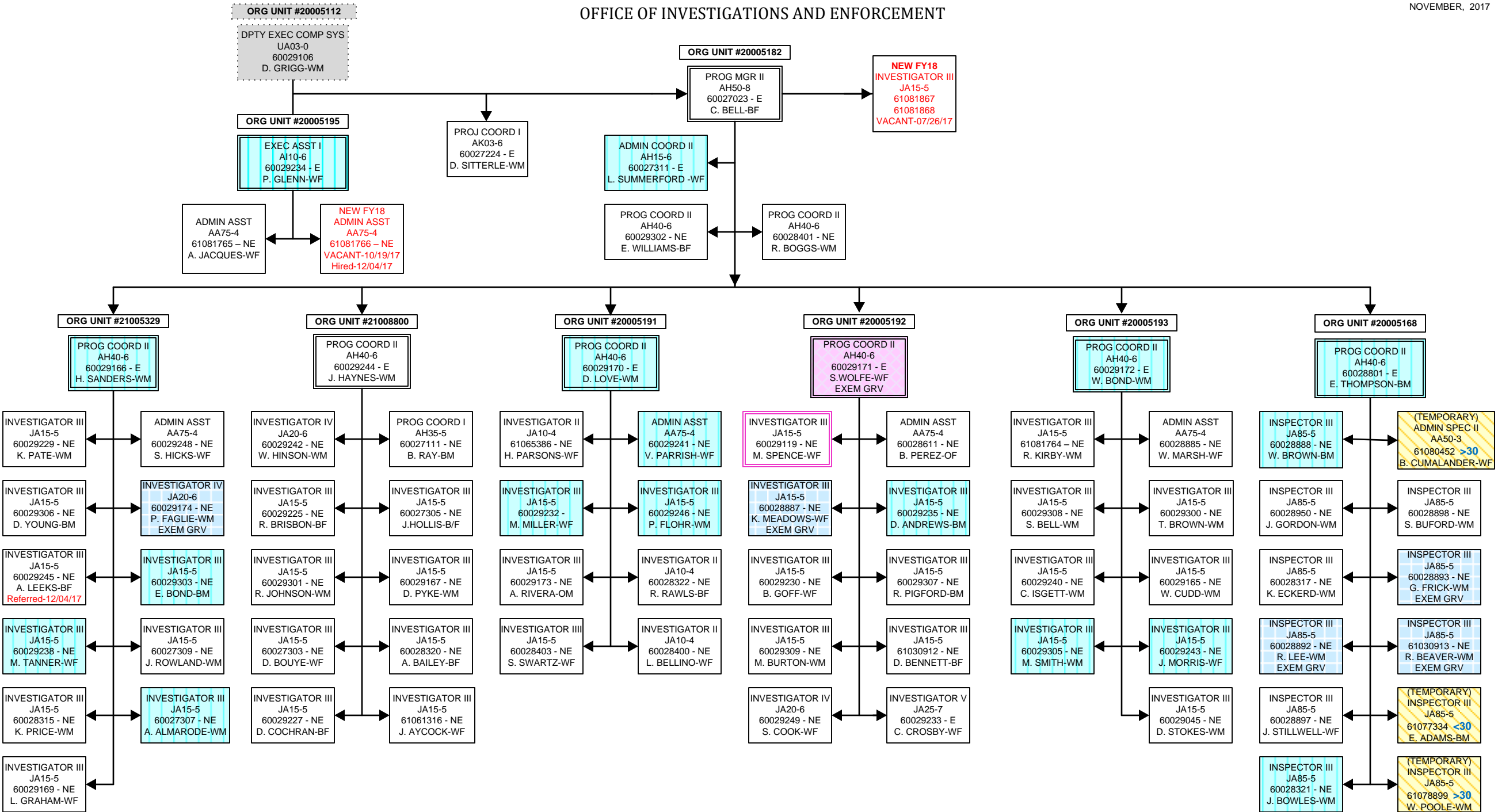


PROFESSIONAL AND OCCUPATIONAL LICENSING
OFFICE OF BOARD SERVICES - BUILDING AND BUSINESS BOARDS-Continued





OFFICE OF INVESTIGATIONS AND ENFORCEMENT



DIVISION OF LABOR
OSHA-COMPLIANCE

NOVEMBER, 2017

