
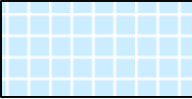
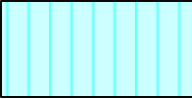






SOUTH CAROLINA
DEPARTMENT OF LABOR, LICENSING AND REGULATION
ORGANIZATIONAL CHART

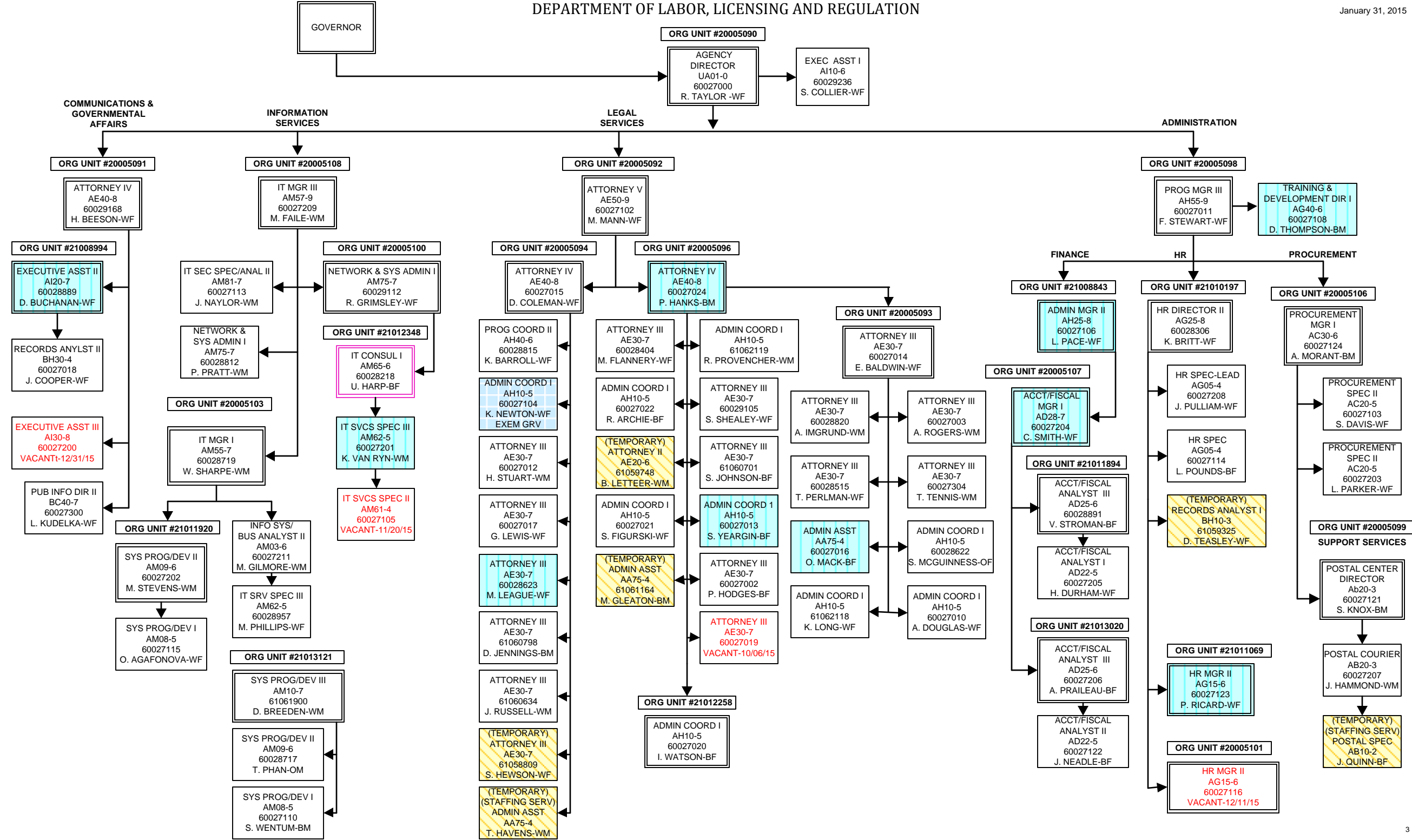
JANUARY 31, 2016

**SOUTH CAROLINA
DEPARTMENT OF LABOR, LICENSING AND REGULATION
ORGANIZATIONAL CHARTS**

Pink Diamond		TERI Employee
Light Blue Square		Employee returned after TERI or Retirement
Turquoise Vertical Stripe		Employee eligible to retire within 5 years by service or age
White Solid Red Letters		Vacant Position-Vacancy Date
Yellow Diagonal Stripe		Temporary Employee
Grayed out		Previously counted position
Dark Pink Outline		Borrowed position

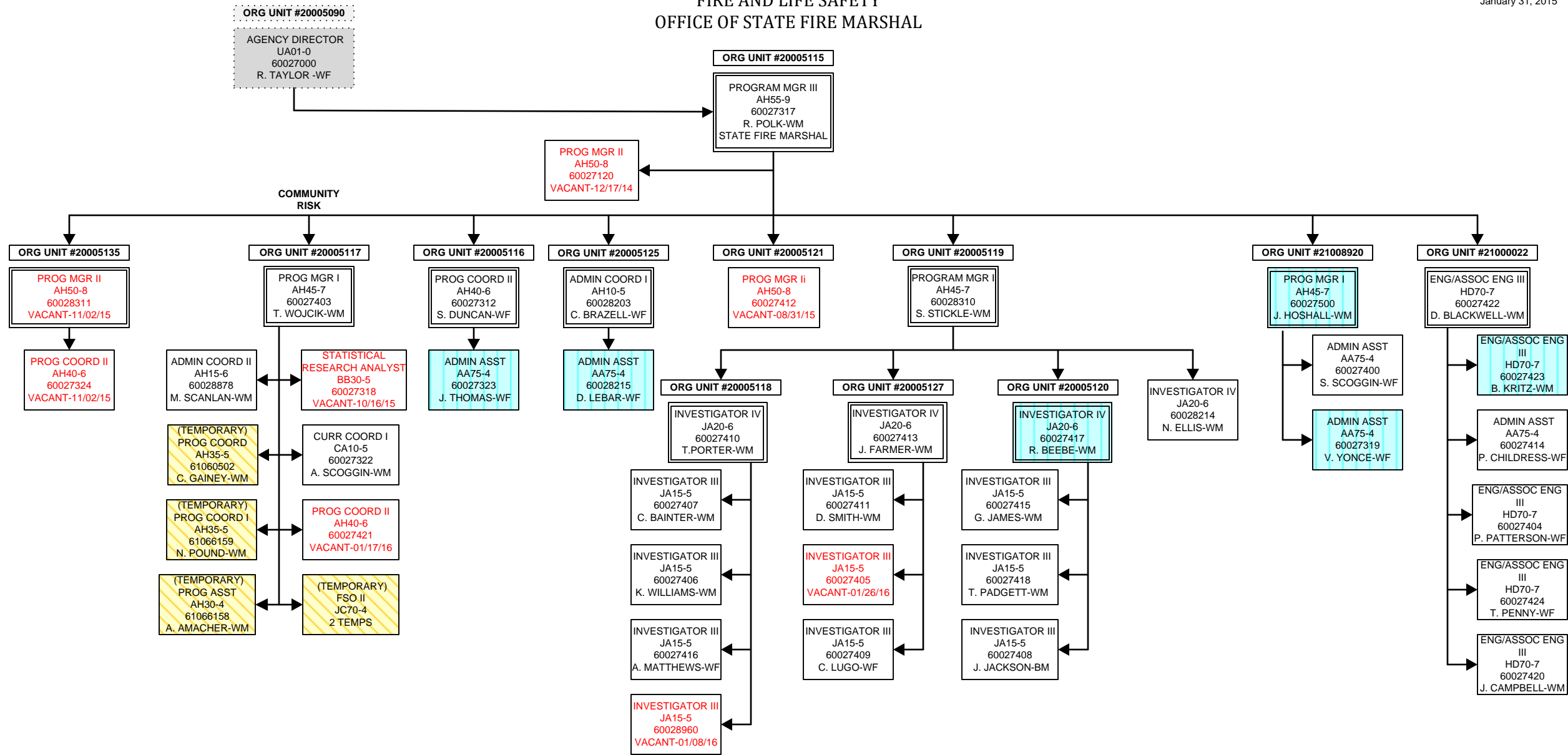
DEPARTMENT OF LABOR, LICENSING AND REGULATION

January 31, 2015



FIRE AND LIFE SAFETY
OFFICE OF STATE FIRE MARSHAL

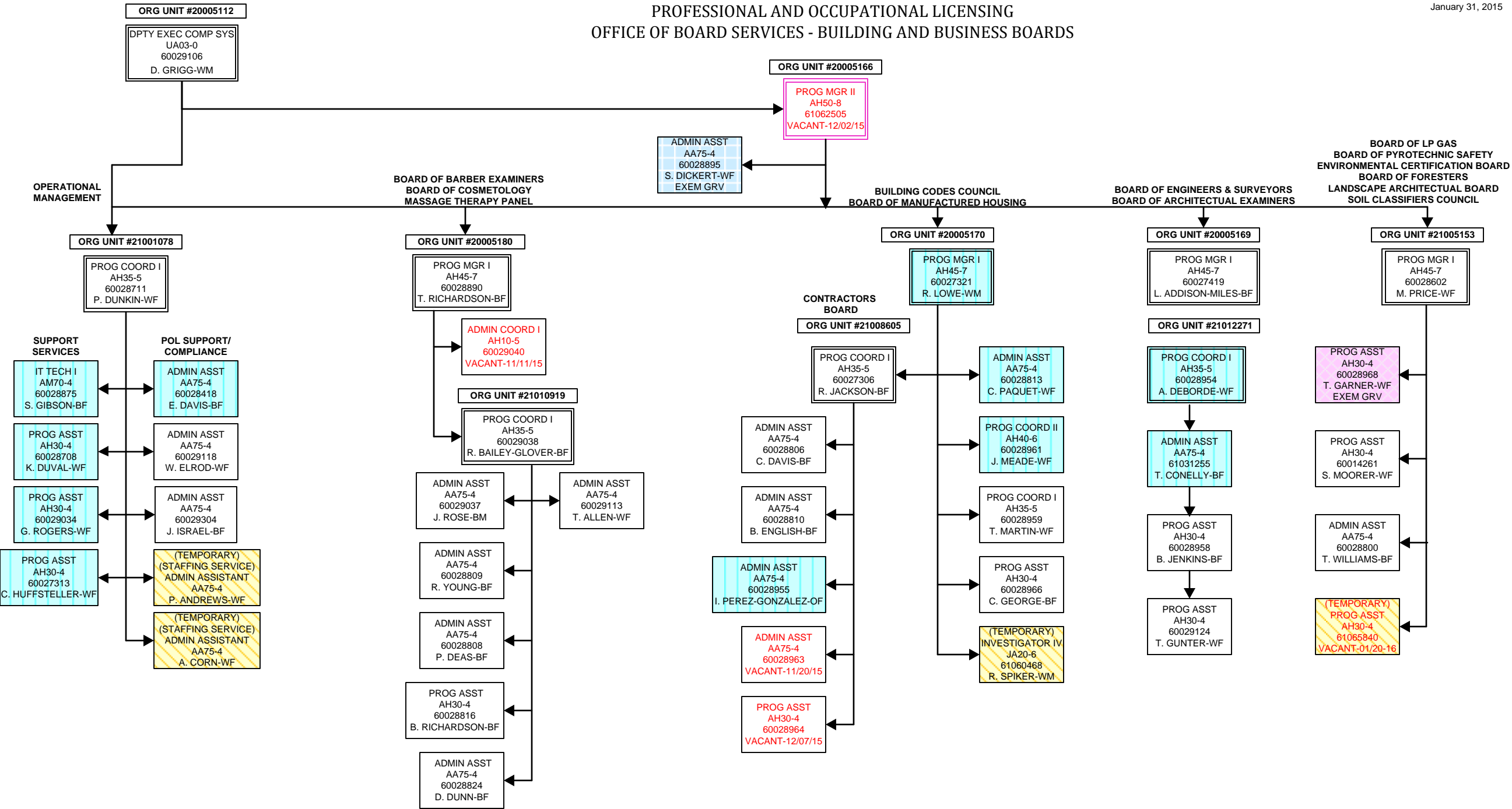
January 31, 2015



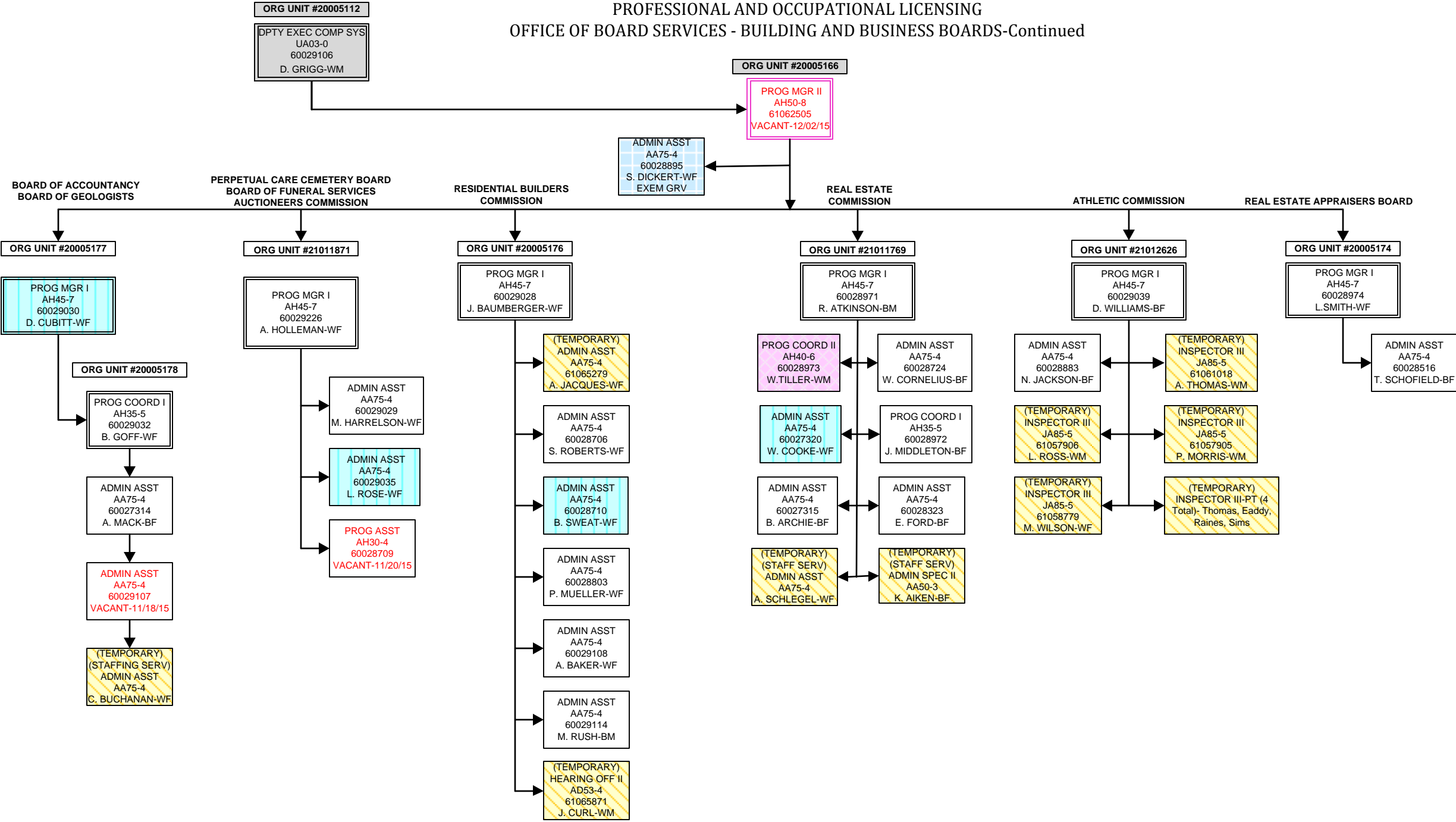
January 31, 2015



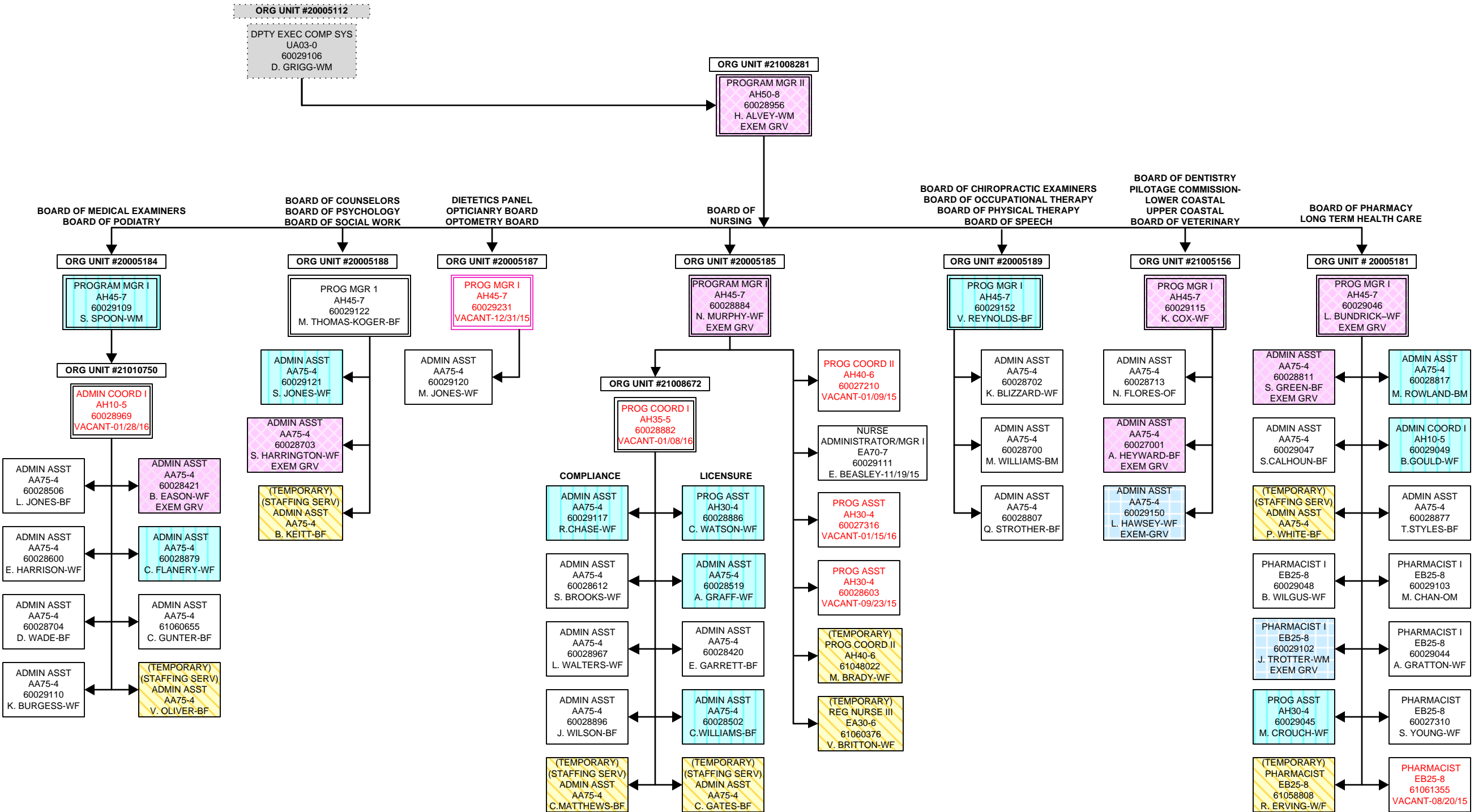
PROFESSIONAL AND OCCUPATIONAL LICENSING
OFFICE OF BOARD SERVICES - BUILDING AND BUSINESS BOARDS



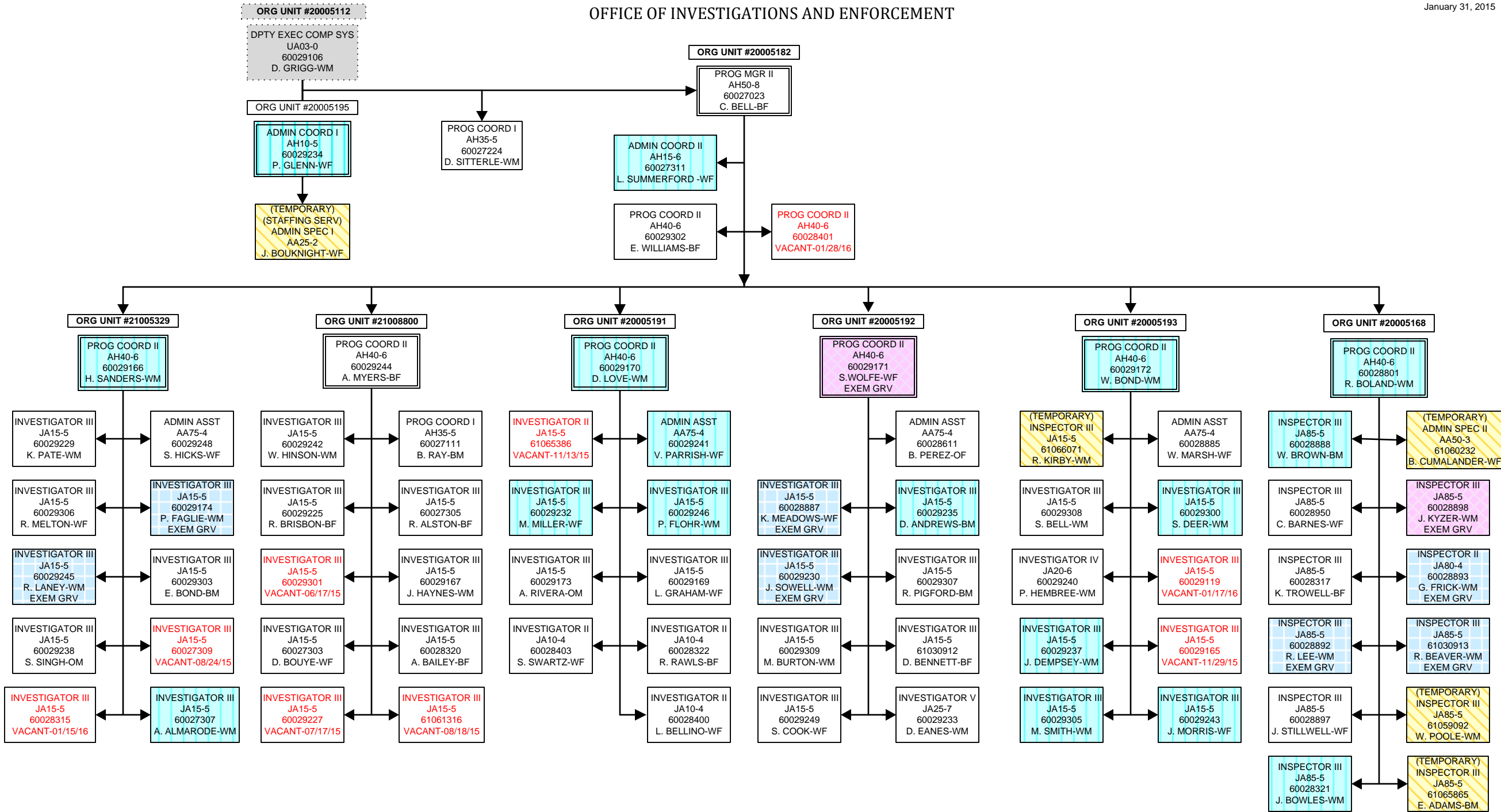
PROFESSIONAL AND OCCUPATIONAL LICENSING
OFFICE OF BOARD SERVICES - BUILDING AND BUSINESS BOARDS-Continued



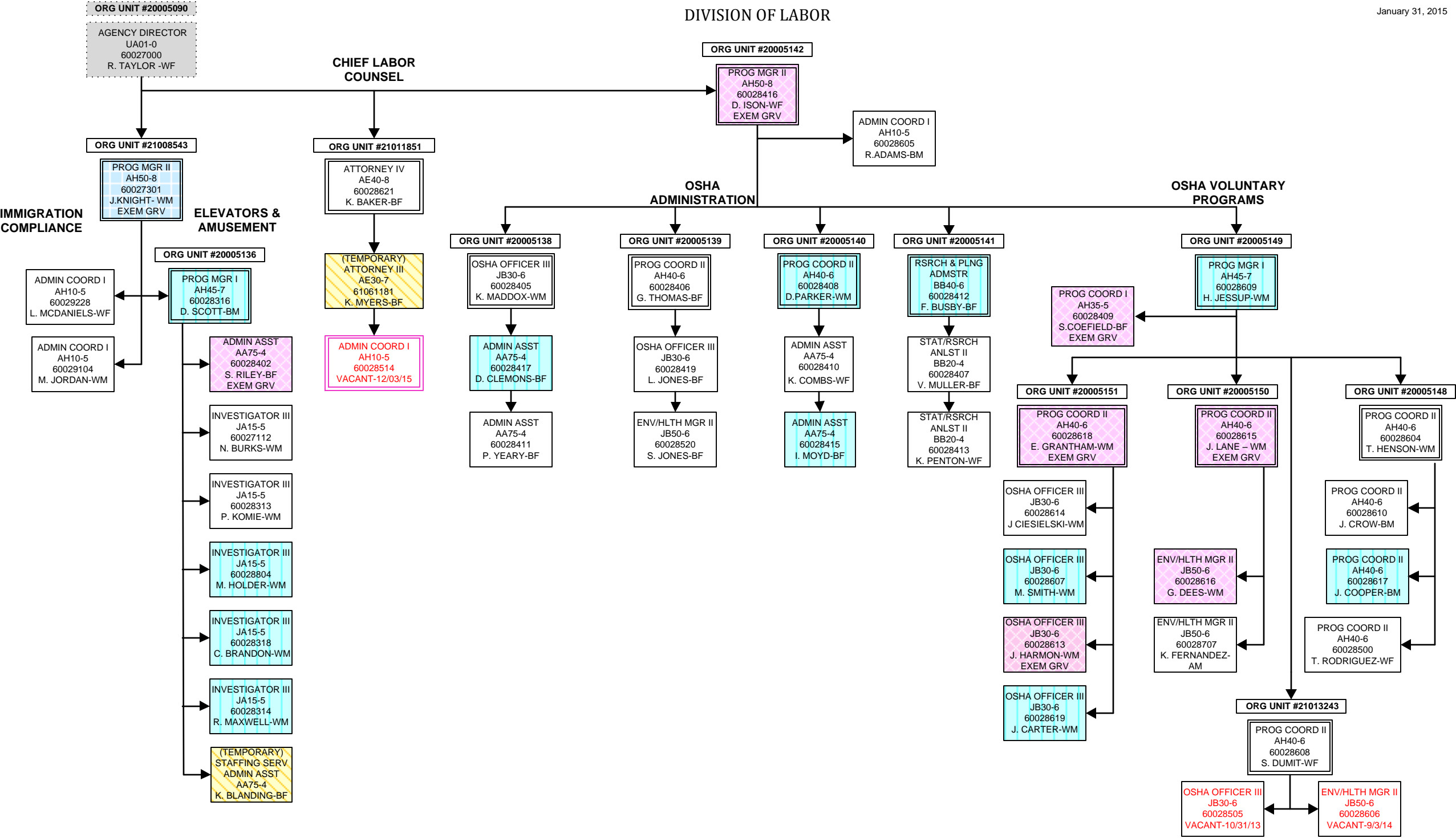
OFFICE OF BOARD SERVICES
HEALTH AND MEDICALLY RELATED BOARDS



OFFICE OF INVESTIGATIONS AND ENFORCEMENT



DIVISION OF LABOR



DIVISION OF LABOR
OSHA-COMPLIANCE

