

April 12, 2019

Mr. Joseph E. Wilkinson
Review Coordinator for Transportation Projects
State Historic Preservation Office
SC Department of Archives & History
8301 Parklane Road
Columbia, SC 29223

RE: Phase I Cultural Resources Survey for Wilton Road Crossing Over Wilton Pond Dam, Lexington County, South Carolina.

The SCDOT proposes to make repairs to the dam that impounds Wilton Pond at an unnamed tributary of Sixmile Creek. Wilton Road (S-365) passes over this dam, which is an earthen structure most likely constructed sometime between 1925 and 1940. The structure was breached during the 2015 historic rain event and is currently closed to traffic. Proposed repairs will principally consist of mending the breach and repairing the washed out portions of the road. The repairs will be state funded, but a United States Army Corps of Engineers (USACE) permit will be required for the project.

The Area of Potential Effect (APE) for cultural resources for the project is approximately 970 feet in length and between 80 and 105 feet in width, and is centered on the dam (**Figure 1**). The APE encompasses the maximum area in which direct impacts from the project are anticipated to occur.

A desktop review of the project location was undertaken using Google Earth, ArchSite, and historic maps and aerial photographs. The background investigation found that no archaeological sites or historic structures have been previously recorded within the APE. The nearest recorded site is 38LX230, an abandoned nineteenth and twentieth century roadbed located approximately 200 feet to the south of the dam(**Figure 2**). An examination of the 1925 Lexington County Soil Map does not show Wilton Road or either of the ponds in the vicinity of the project area (**Figure 3**)(USDA 1925). The earliest images that the pond and dam are shown on are an aerial photograph from 1939 (USDA 1939) and a 1939 Lexington County Highway Map (SCDOT 1939) (**Figures 4 and 5**). Therefore it is most likely that the pond and dam were built between 1925 and 1939. The Wilton Pond dam and road are shown on subsequent aerials (USAAA 1943; USDA 1951, 1955, and 1960; 1966, and 1970; USASCS 1966 and 1970).

On March 27, 2019, SCDOT staff archaeologists conducted a field reconnaissance of the project area (**Figure 6**). The reconnaissance consisted of a pedestrian survey of the entire project area augmented by the excavation of shovel test pits (STPs). A total of 8 STPs were excavated (STPs 1-1, 1-2, 1-3, 2-1, 2-2, 3-1, 3-2, and 3-3) within three transects. The remainder of the project area



was not shovel tested due to heavy ground disturbance such as deep erosional gullies, landscaped lawn, and buried utilities. **Figures 7 through 12** are examples of how the project area looked at the time of survey and show the amount of ground disturbance that was present.

The profiles of the excavated STPs showed that soil was disturbed along Transect 1. The soil profiles there consisted of up to 20 centimeters of mottled dark brown (10YR 3/3), gray (10YR 5/1), yellowish-brown (10YR 5/8), and pale brown (10YR 6/3) sandy loam and clay loam. The soil profiles along Transect 2 consisted of two strata. Stratum I extended up to 20 centimeters below surface (cmbs) and was gray (10YR 5/1) loamy sand. This was followed by a second stratum of yellowish-brown (10YR 5/8) to light yellowish-brown (10YR 6/4) sand to at least 80 cmbs. The soil profile in Transect 3 consisted of up to three strata. Stratum I was gray (10YR 5/1) to dark gray (10YR 4/1) loamy sand up to 20 cmbs. The second stratum varied from pale brown (10YR 6/3) to brownish-yellow (10YR 6/8) sand reaching to 60 cmbs. This was underlain by light yellowish-brown (10YR 6/4) clay to at least 70 cmbs. No STPs were excavated within Transect 4 due to heavy ground disturbance along this transect.

The only cultural resource recorded during this investigation is the Wilton Pond and dam. The pond measures approximately 1,190 feet northwest-southeast by 271 feet northeast-southwest and covers approximately 5.84 acres. The dam is approximately 300 feet long and about 55 feet wide and 10 feet high (**Figure 13**). **Figures 14 and 15** show Wilton Pond as it appeared at the time of the survey. No evidence was found during background research or during the field visit to suggest that this resource is part of a historic mill pond site. This site was recorded as Site No. 0981 with the State Historic Preservation Office (SHPO). Resource 0981 is recommended not eligible for the National Register of Historic Places.

No other archaeological remains or historic resources were noted during this survey. In general, the area was found to be heavily disturbed by buried utilities, graded lawn, or slope. Taking all these factors into account, SCDOT has determined that no historic properties will be affected by this project. If any resources are discovered during construction, all work would stop and your office would be notified.

Please review this information and the accompanying Site 0981 intensive survey form and advise us if you concur with our findings. Please contact us if you have any questions.

Regards,

Tracy Martin

Digitally signed by Tracy Martin
DN: cn=Tracy Martin, o=SC
Department of Transportation,
ou=Environmental Services Division,
email=martint@scdot.org, c=US
Date: 2019.04.12 09:58:12 -04'00'

REFERENCES CITED

South Carolina Department of Transportation (SCDOT)

- 1939 General Highway and Transportation Map of Lexington County, South Carolina. Retrieved from University of South Carolina University Libraries, Maps Department, Digital Collections <<http://digital.tcl.sc.edu/cdm/singleitem/collection/scrm/id/432/rec/1>>.

United States Agricultural Adjustment Administration (USAAA)

- 1943 Lexington County, 1943 Aerial Photograph, Sheet 1 of 5. Retrieved from University of South Carolina University Libraries, Digital Collections, South Carolina Aerial Photography Index, 1937 – 1989
<<http://digital.tcl.sc.edu/cdm/compoundobject/collection/scai/id/1994/rec/2>>.

United States Department of Agriculture (USDA)

- 1925 Soil Survey of Lexington County, South Carolina. Retrieved from USDA, Natural Resources Conservation Service, Published Soil Surveys for South Carolina
<https://www.nrcs.usda.gov/Internet/FSE_MANUSCRIPTS/south_carolina/lexingtonSC1925/lexingtonSC1925.pdf>.
- 1939 Lexington County, 1939 Aerial Photograph, Sheet 6 of 8. Retrieved from University of South Carolina University Libraries, Digital Collections, South Carolina Aerial Photography Index, 1937 – 1989
<<http://digital.tcl.sc.edu/cdm/compoundobject/collection/scai/id/1780/rec/1>>.
- 1951 Lexington County, 1951 Aerial Photograph, Sheet 2 of 4. Retrieved from University of South Carolina University Libraries, Digital Collections, South Carolina Aerial Photography Index, 1937 – 1989
<<http://digital.tcl.sc.edu/cdm/compoundobject/collection/scai/id/1938/rec/3>>.
- 1955 Lexington County, 1955 Aerial Photograph, Sheet 4 of 7. Retrieved from University of South Carolina University Libraries, Digital Collections, South Carolina Aerial Photography Index, 1937 – 1989
<<http://digital.tcl.sc.edu/cdm/compoundobject/collection/scai/id/1926/rec/4>>.
- 1960 Lexington County, 1960 Aerial Photograph, Sheet 2 of 5. Retrieved from University of South Carolina University Libraries, Digital Collections, South Carolina Aerial Photography Index, 1937 – 1989
<<http://digital.tcl.sc.edu/cdm/compoundobject/collection/scai/id/1806/rec/5>>.

United States Geological Survey (USGS)

- 1982 1982 Southwest Columbia 1:24,000 Scale Topographic Quadrangle. Retrieved from USGS Historical Topographic Map Explorer <<http://historicalmaps.arcgis.com/usgs/>>.

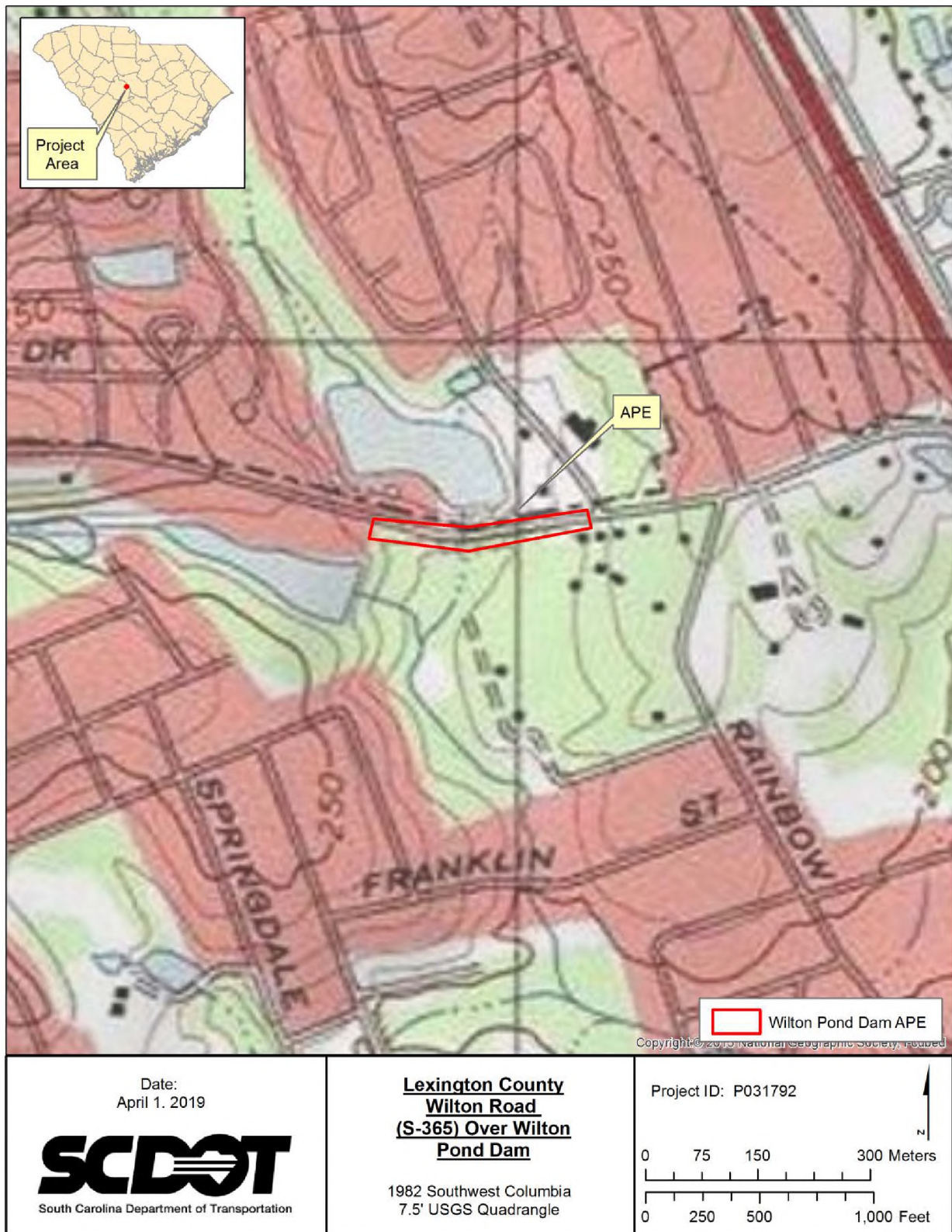
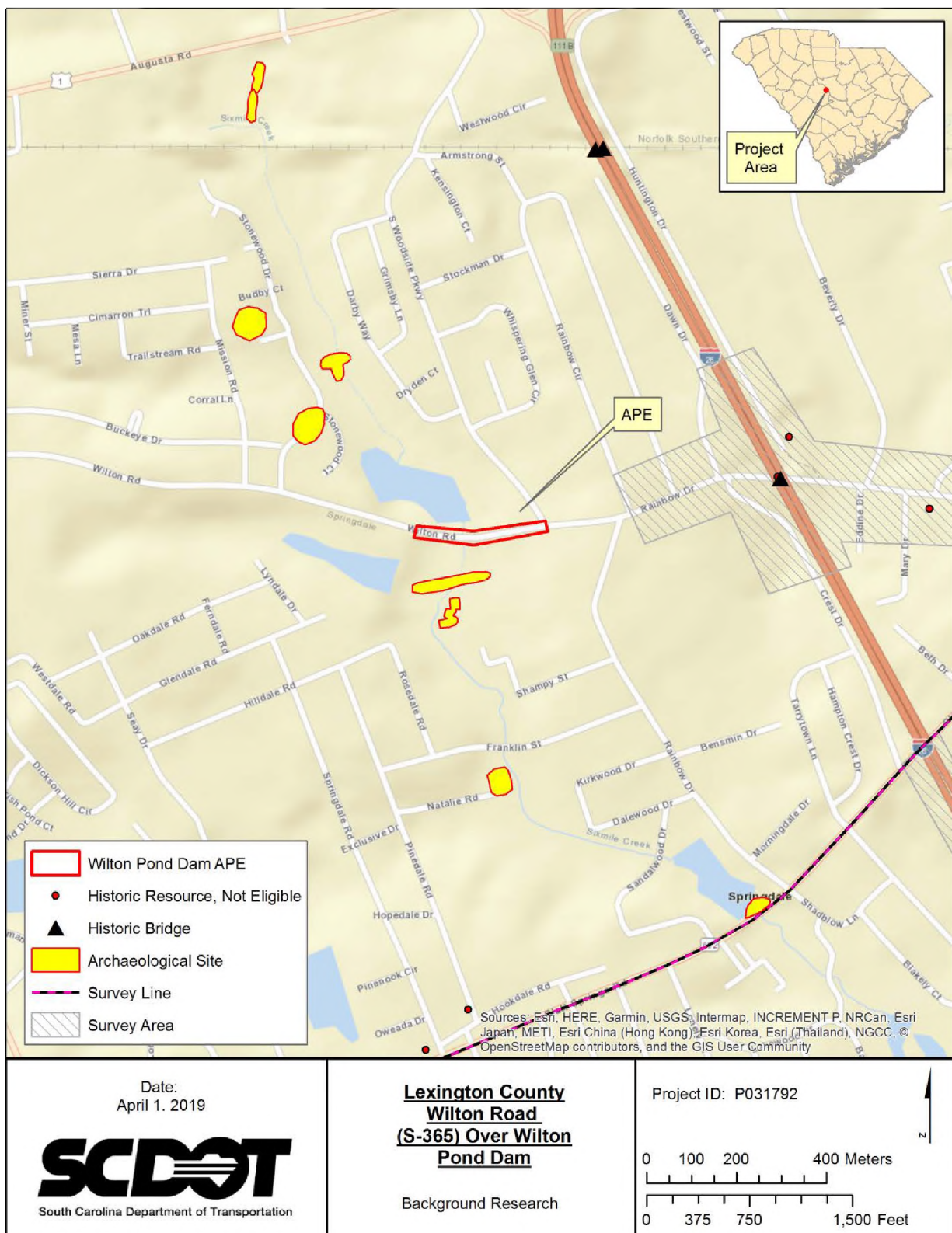


Figure 1. Map Showing Project Area (USGS 1982).



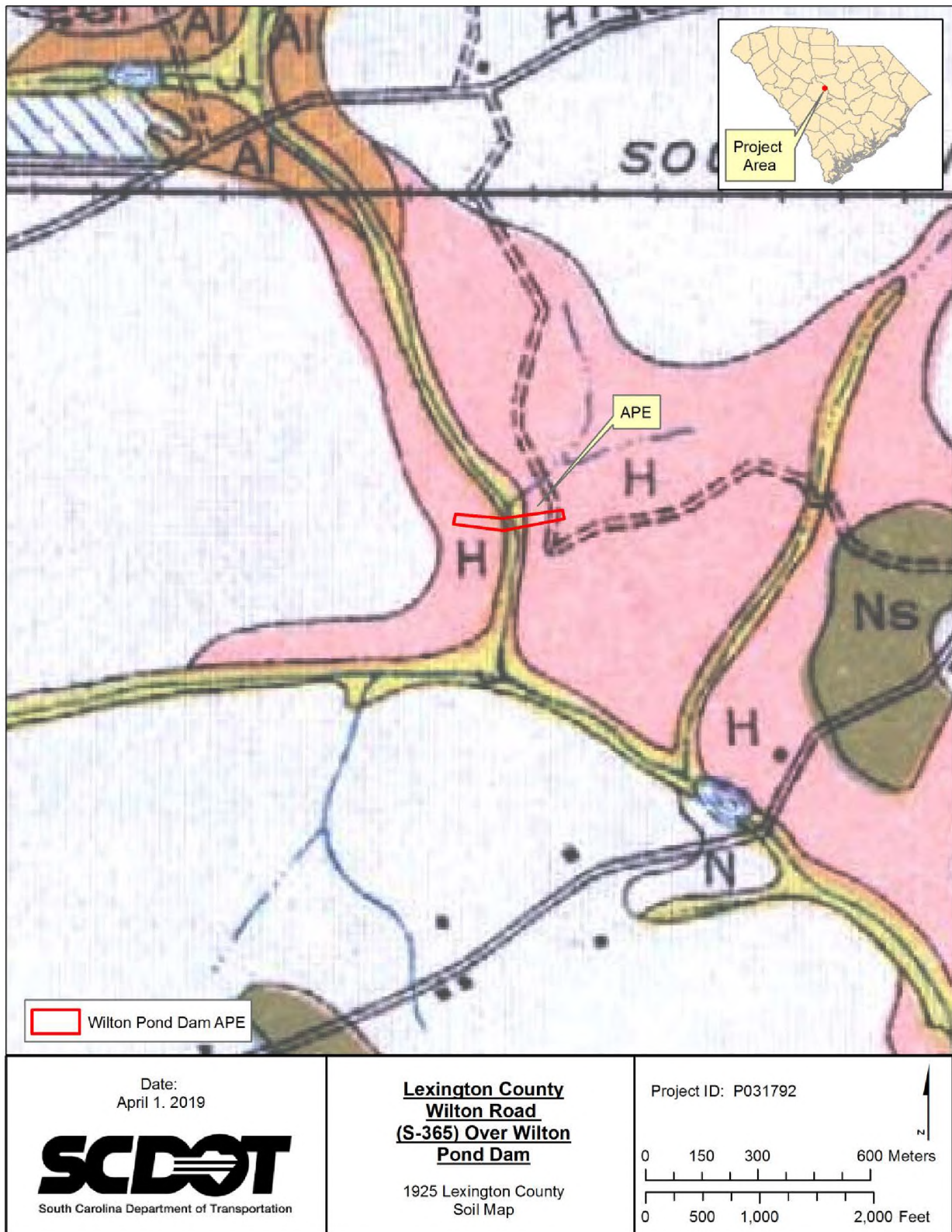


Figure 3. 1925 Lexington County Soil Map (USGS 1925)



Figure 4. 1939 Historic Aerial Photograph Showing Project Area (USDA 1939).



Figure 6. Map of Project Area Showing Shovel Test Pits and Contours.



Figure 7. View of Project Area From STP 1-4, Facing West.



Figure 8. View of Project Area From Dam, Facing Northeast.



Figure 9. View of Project Area and Graded Lawn Disturbance From STP 4-2, Facing West.



Figure 10. View of Project Area and Buried Utility Disturbance From STP 2-2, Facing West.



Figure 11. View of Project Area and Buried Utility Disturbance Along Transect 2, Facing East.



Figure 12. View of Dam Breach, Facing West From Center of Dam.



Figure 13. Site No. 0981, Wilton Pond and Wilton Pond Dam.



Figure 14. View of Wilton Pond (Site No 0981), Facing Northwest.



Figure 15. View of Wilton Pond Dam (Site No 0981), Facing West.