

SOUTH CAROLINA  
DEPARTMENT OF LABOR, LICENSING AND REGULATION  
ORGANIZATIONAL CHART

SEPTEMBER 2022

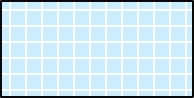
SOUTH CAROLINA  
DEPARTMENT OF LABOR, LICENSING AND REGULATION  
ORGANIZATIONAL CHARTS

Light Orange Square



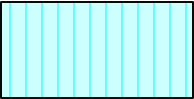
Employee Exempt from Grievance

Light Blue Square



Employee returned after TERI  
or Retirement; Exempt Grv

Turquoise Vertical Stripe



Employee eligible to retire  
within 5 years by service  
or age

White Solid Red Letters



Vacant Position-Vacancy  
Date

Yellow Diagonal Stripe



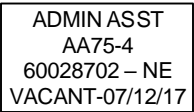
Temporary Employee

Dark Pink Outline



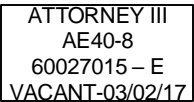
Borrowed position

NE Designation



Non-exempt position

E Designation



Exempt position

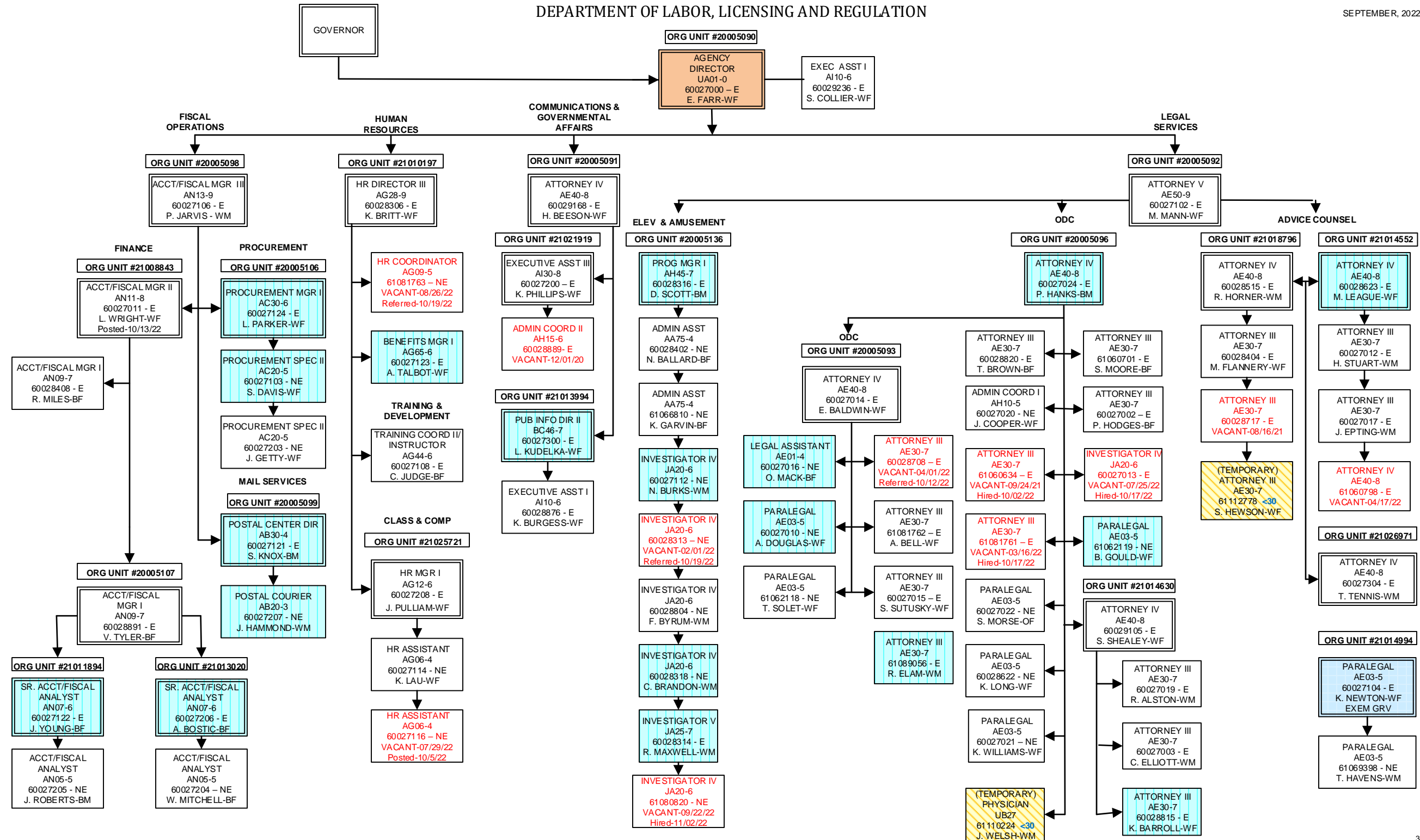
Purple Diagonal  
Stripe



Two-Week Break

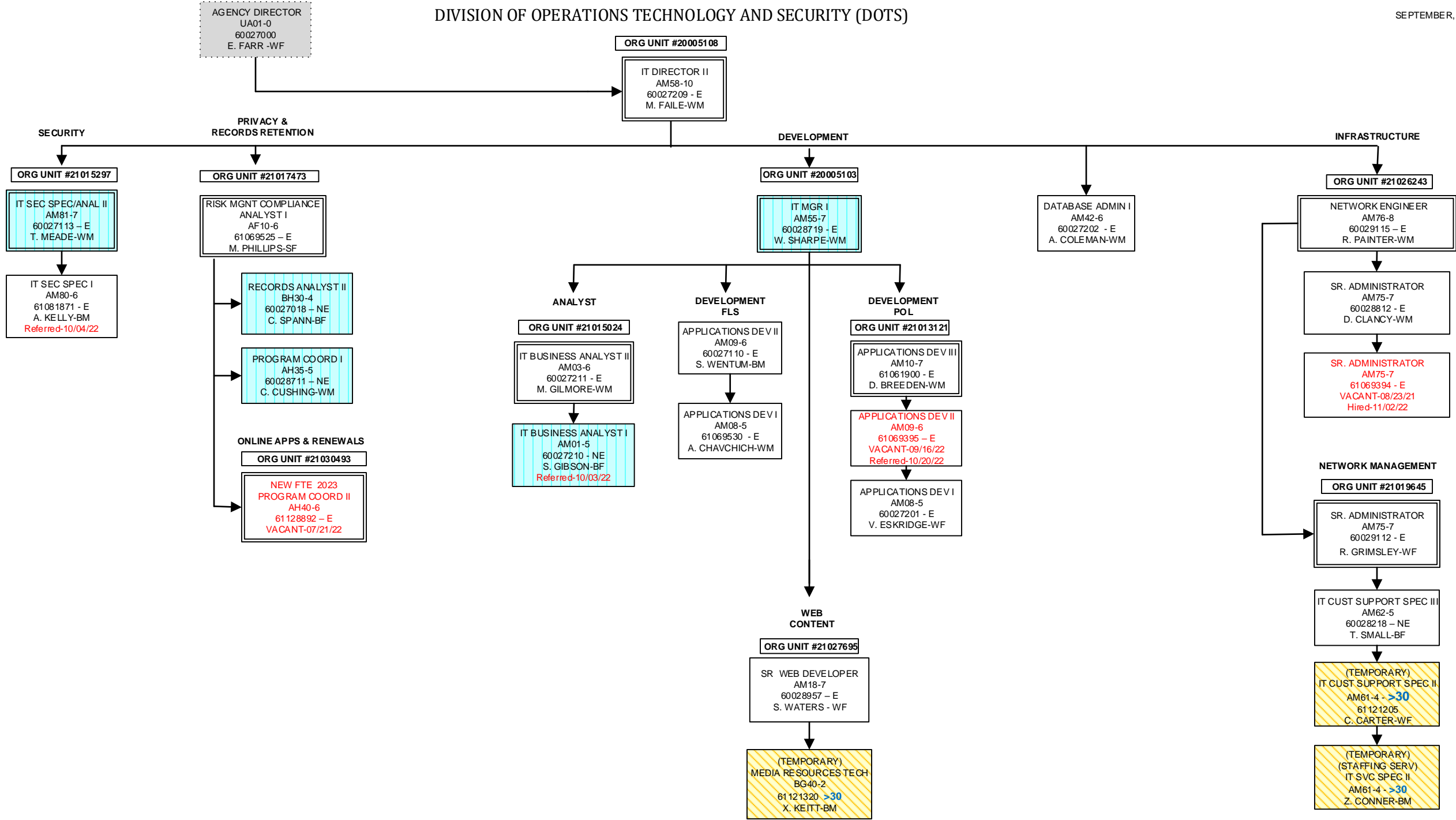
DEPARTMENT OF LABOR, LICENSING AND REGULATION

SEPTEMBER, 2022



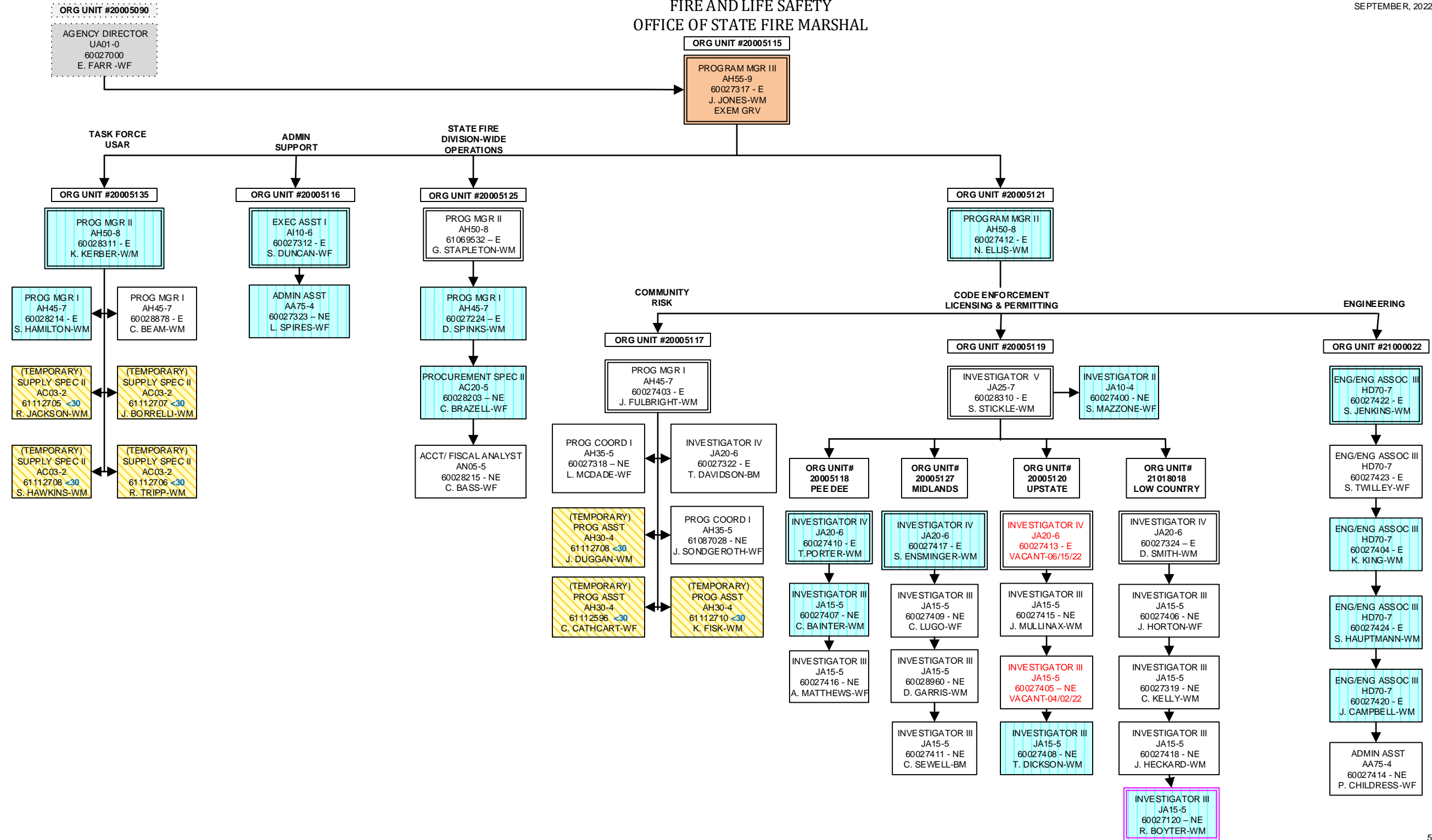
DIVISION OF OPERATIONS TECHNOLOGY AND SECURITY (DOTS)

SEPTEMBER, 2022



FIRE AND LIFE SAFETY  
OFFICE OF STATE FIRE MARSHAL

SEPTEMBER, 2022





FIRE AND LIFE SAFETY  
FIRE ACADEMY -2

ORG UNIT #20005115

PROGRAM MGR III  
AH55-9  
60027317 - E  
J. JONES-WM

ORG UNIT #20005128

PROG MGR II  
AH50-8  
60028805 - E  
D. RAY-WM

TRAINING/  
INSTRUCTION

ORG UNIT #20005133

PROG MGR I  
AH45-7  
60028305 - E  
T. BROWN-BM

ADMINISTRATION

ORG UNIT #20005122

ADMIN COORD I  
AH10-5  
60028217 - E  
S. BUSH-BF

ADMIN ASST  
AA75-4  
60028303 - NE  
O. STALEY-BF

ADMIN ASST  
AA75-4  
60028213 - NE  
G. EVANS-BF

ADMIN ASST  
AA75-4  
60028211 - NE  
K. BRANTNER-WF

REGIONAL

ORG UNIT #20005126

PROG COORD II  
AH40-6  
60028204 - E  
E. ADAMS-WM

SPECIAL OPERATIONS

ORG UNIT #21024393

PROG COORD II  
AH40-6  
60028206 - E  
J. HEADRICK-WM

(TEMPORARY)  
PROG COORD I  
AH35-5  
61113497 - NE  
M. DUNCAN-WM

(TEMPORARY)  
FSO I  
JC60-4  
22 TEMPS  
FSO II  
JC70-5  
1 TEMPS

RESIDENT

ORG UNIT #20005130

PROG COORD II  
AH40-6  
60028223 - E  
VACANT-08/11/22

PROG COORD I  
AH35-5  
60028208 - NE  
J. CHARLESTON-BM

PROG COORD I  
AH35-5  
60028301 - NE  
J. PADIN-HM

PROG COORD I  
AH35-5  
60028952 - NE  
D. CRAPE-BM

ORG UNIT #21027658

PROG COORD I  
AH35-5  
60028200 - E  
C. MILES-WM

PROG COORD I  
AH35-5  
60028124 - NE  
E. SHULER-BM

ORG UNIT #20005129  
REGION 1 GREENVILLE

PROG COORD I  
AH35-5  
60028221 - E  
D. DUNCAN-WM

(TEMPORARY)  
ADMIN ASST  
AA75-4  
611132219 <30  
H. WHISMAN -WF

(TEMPORARY)  
FSO I  
JC60-4  
21 TEMPS  
FSO II  
JC70-5  
4 TEMPS

ORG UNIT #21011927  
REGION 2 YORK CO.

PROG COORD I  
AH35-5  
60028122 - E  
J. MCCARLEY-WM  
EXEM GRV

(TEMPORARY)  
ADMIN ASST  
AA75-4  
61113140 <30  
G. CIBBARELLI -WF

(TEMPORARY)  
FSO I  
JC60-4  
19 TEMPS

ORG UNIT #20005132  
REGION 3 FLORENCE

PROG COORD I  
AH35-5  
60028300 - E  
E. JOYCE-WF

(TEMPORARY)  
ADMIN ASST  
AA75-4  
61128519 <30  
K.PAYETTE-WF

(TEMPORARY)  
FSO I  
JC60-4  
19 TEMPS  
FSO II  
JC70-5  
1 TEMP

ORG UNIT #21024097  
REGION 4 HORRY

PROG COORD I  
AH35-5  
60028205 - E  
E. FIFYAW-WM

(TEMPORARY)  
ADMIN ASST  
AA75-4  
61113375 <30  
H. GASQUE-WF

(TEMPORARY)  
EDU SPEC  
CA30-4  
61113379 <30  
K. NIEUWENHUIS

(TEMPORARY)  
FSO I  
JC60-4  
18 TEMPS

ORG UNIT #21001228  
REGION 5 CHARLESTON

PROG COORD I  
AH35-5  
60028121 - E  
E. BOLEN-WM

(TEMPORARY)  
ADMIN ASST  
AA75-4  
61121349 <30  
J. BEACH-WF

(TEMPORARY)  
FSO I  
JC60-4  
17 TEMPS  
FSO II  
JC70-5  
3 TEMPS

ORG UNIT #21011926  
REGION 6 AIKEN

PROG COORD I  
AH35-5  
60028307 - E  
M. TURNER-WF

(TEMPORARY)  
ADMIN ASST  
AA75-4  
61113101 <30  
L. WAY-WF

(TEMPORARY)  
FSO I  
JC60-4  
11 TEMPS  
FSO II  
JC70-5  
1 TEMPS

ORG UNIT #21024098  
REGION 7 ANDERSON

PROG COORD I  
AH35-5  
60028220 - E  
W. CRAFT-WM

(TEMPORARY)  
ADMIN ASST  
AA75-4  
61113085 <30  
C. POPHAM-WF

(TEMPORARY)  
FSO I  
JC60-4  
20 TEMPS  
FSO II  
JC70-5  
2 TEMP

(TEMPORARY)  
EQUIP OPER III  
KD45-3  
61113252 <30  
J. WHITE-WM

(TEMPORARY)  
EQUIP OPER III  
KD45-3  
61111292 <30  
V. GILLERSON-BM

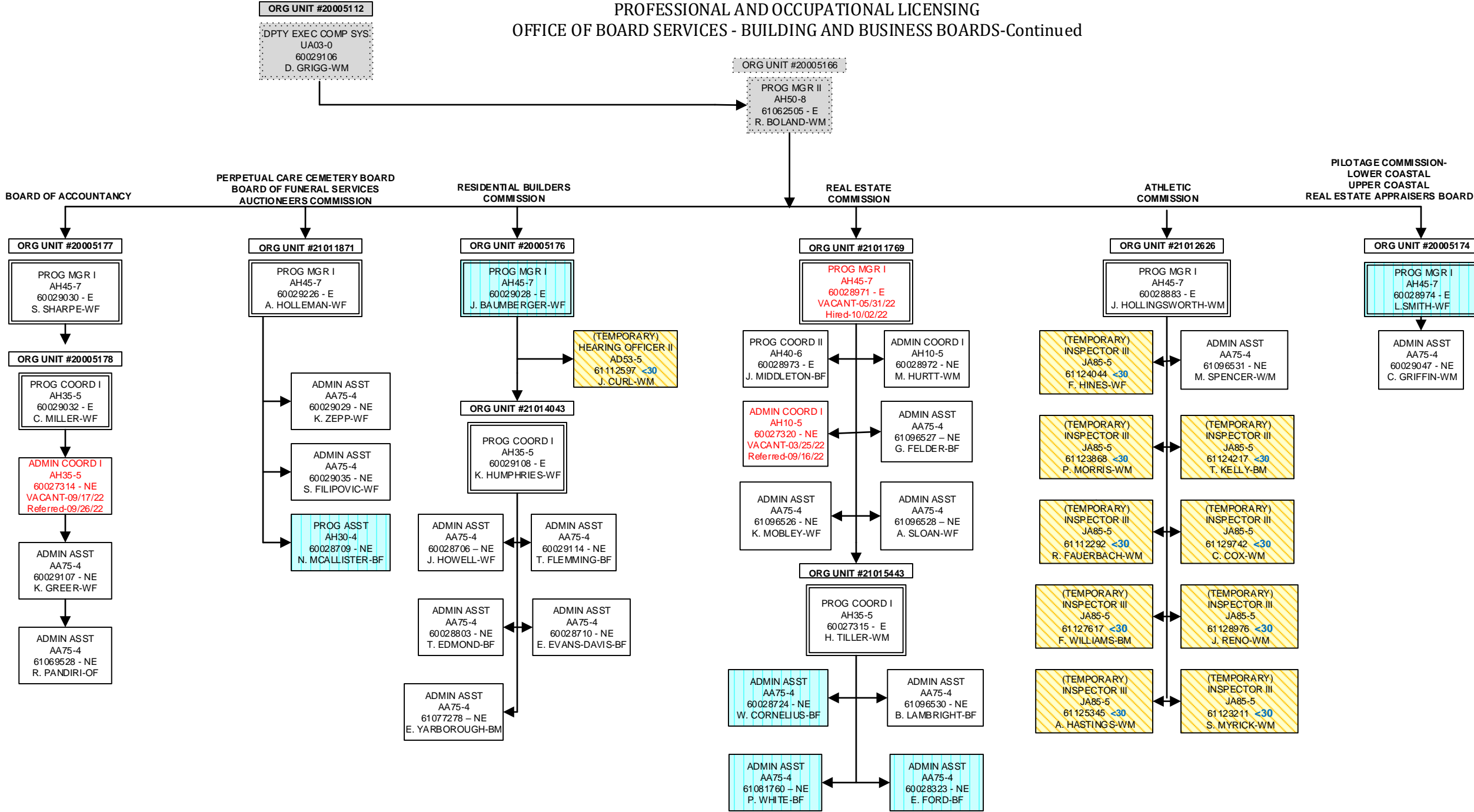
(TEMPORARY)  
FSO I  
JC60-4  
7 TEMPS  
FSO II  
JC70-5  
5 TEMPS

(TEMPORARY)  
FSO I  
JC60-4  
6 TEMPS



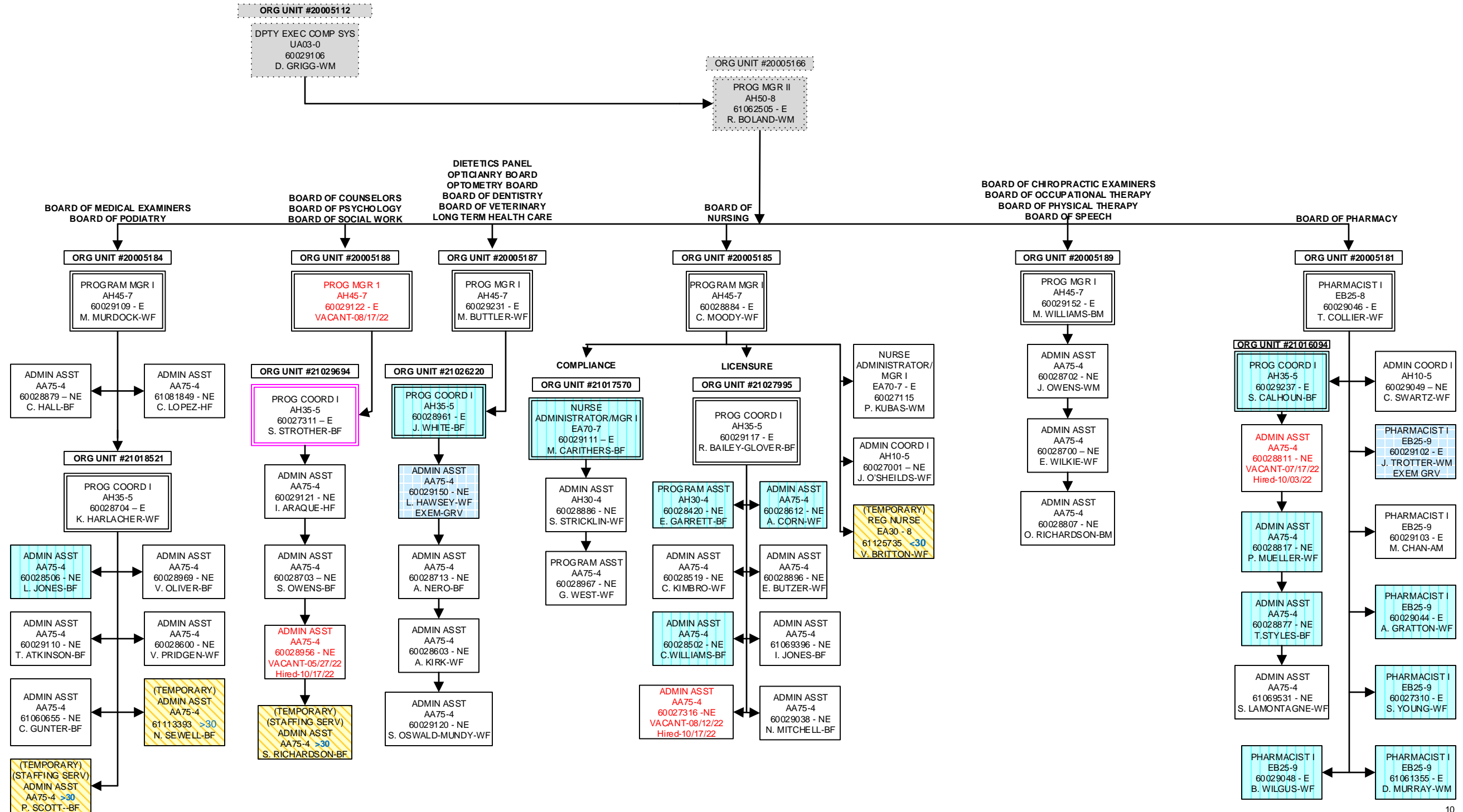


PROFESSIONAL AND OCCUPATIONAL LICENSING  
OFFICE OF BOARD SERVICES - BUILDING AND BUSINESS BOARDS-Continued



OFFICE OF BOARD SERVICES  
HEALTH AND MEDICALLY RELATED BOARDS

SEPTEMBER, 2022



OFFICE OF INVESTIGATIONS AND ENFORCEMENT

