
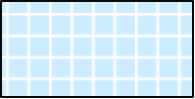
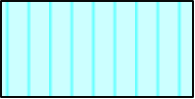






SOUTH CAROLINA  
DEPARTMENT OF LABOR, LICENSING AND REGULATION  
ORGANIZATIONAL CHART

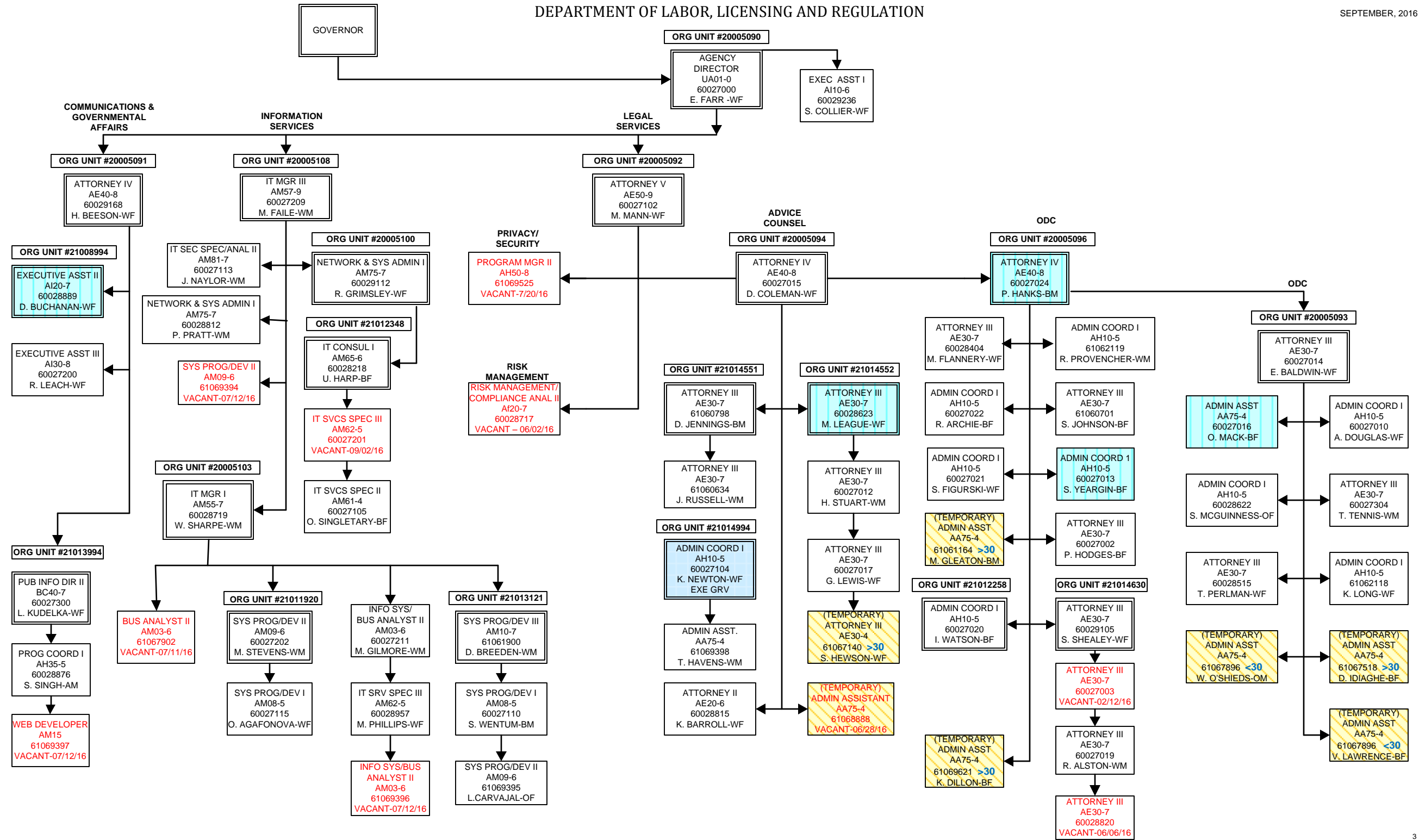
SEPTEMBER, 2016

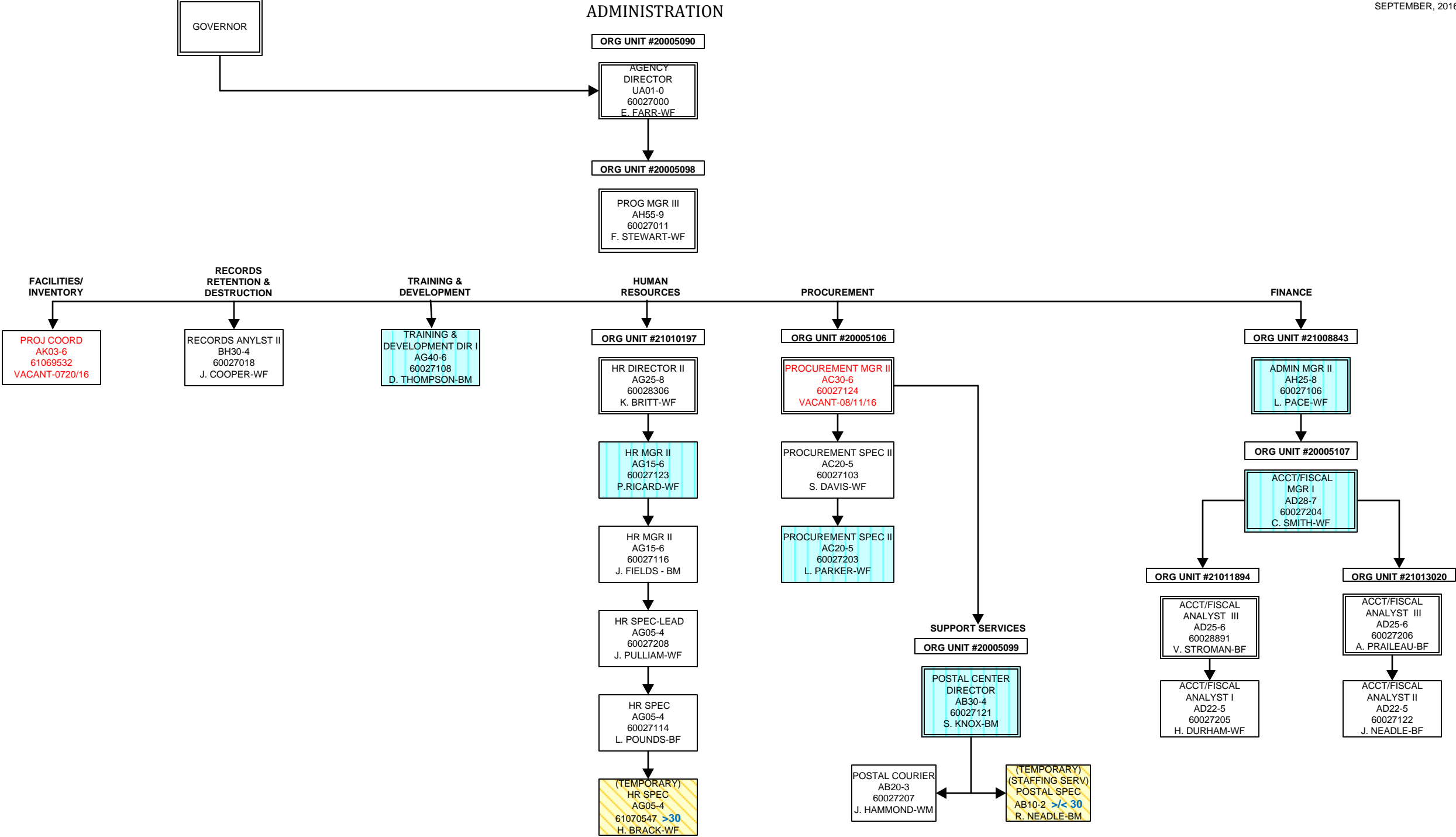
**SOUTH CAROLINA  
DEPARTMENT OF LABOR, LICENSING AND REGULATION  
ORGANIZATIONAL CHARTS**

Pink Diamond		<b>TERI Employee</b>
Light Blue Square		<b>Employee returned after TERI or Retirement</b>
Turquoise Vertical Stripe		<b>Employee eligible to retire within 5 years by service or age</b>
White Solid Red Letters		<b>Vacant Position-Vacancy Date</b>
Yellow Diagonal Stripe		<b>Temporary Employee</b>
Grayed out		<b>Previously counted position</b>
Dark Pink Outline		<b>Borrowed position</b>

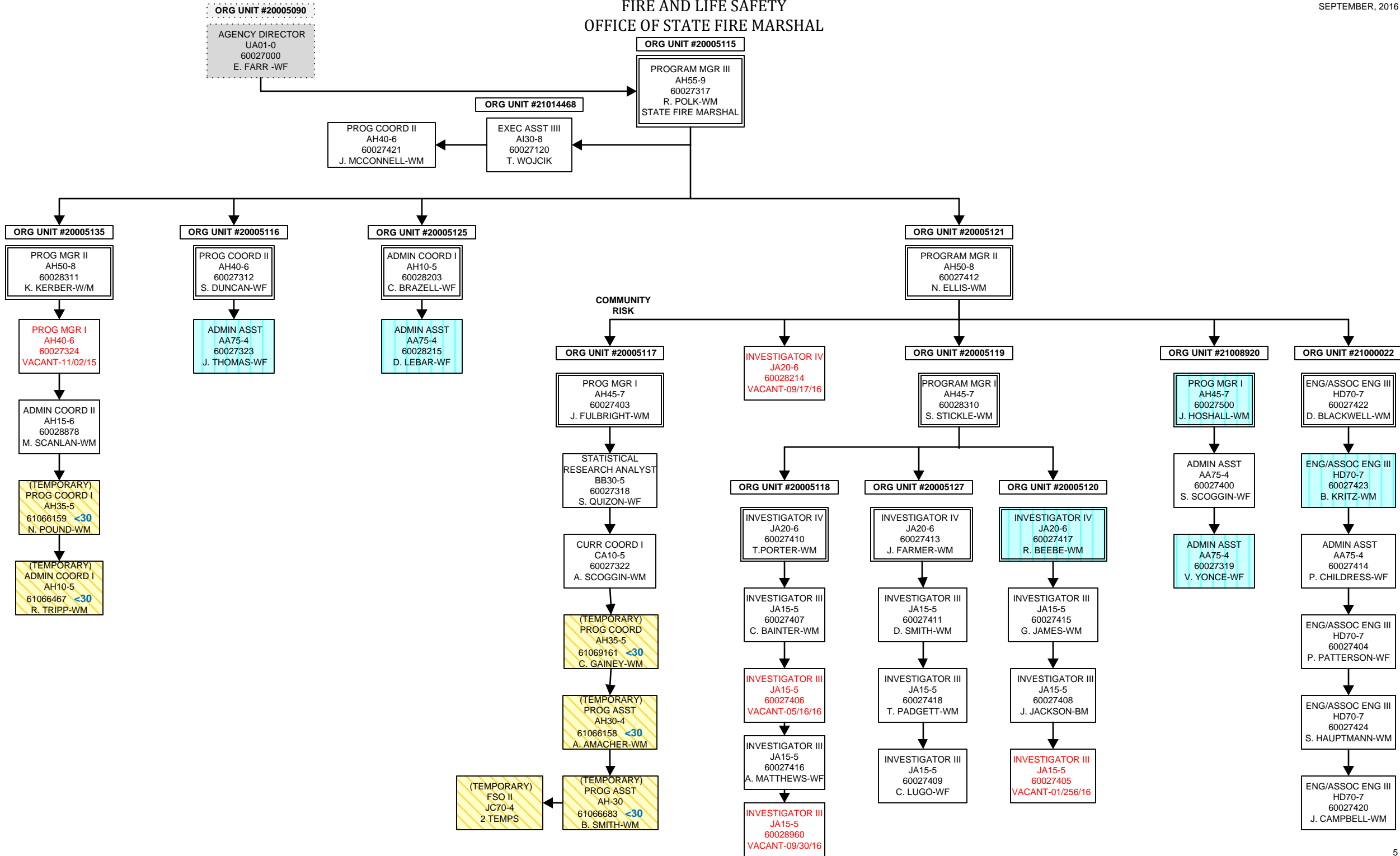
DEPARTMENT OF LABOR, LICENSING AND REGULATION

SEPTEMBER, 2016





FIRE AND LIFE SAFETY  
OFFICE OF STATE FIRE MARSHAL



FIRE AND LIFE SAFETY  
FIRE ACADEMY

SEPTEMBER, 2016

ORG UNIT #20005115  
PROGRAM MGR III  
AH55-9  
60027317  
R. POLK-WM  
STATE FIRE MARSHAL

ORG UNIT #20005128

PROG MGR II  
AH50-8  
60028805  
VACANT-7/2/16

ORG UNIT #20005134

PROG COORD I  
AH10-5  
60028211  
VACANT-03/24/16

ORG UNIT #20005124

ENG/ASSOC ENG II  
HD65-6  
60028202  
D. RECKELHOFF-WM

ORG UNIT #21009882

TRAIN & DEV DIR I  
AG40-6  
60028207  
VACANT-03/25/16

ORG UNIT #20005133

PROG MGR I  
AH45-7  
60028305  
P. RUSSELL-WM

ORG UNIT #20005126

PROG COORD II  
AH40-6  
60028204  
R. BUSBY-WM

TRADES SPEC IV  
KC40-4  
60028123  
J. KESTER-WM

TRADES SPEC IV  
KC40-4  
60028219  
M. MONROE-WM

TRADES SPEC V  
KC50-5  
60028216  
J. GRIGGS-WM

TRADES SPEC IV  
KC40-4  
60028201  
R. MOORE-WM

(TEMPORARY)  
TRADES SPEC IV  
KC40-4  
61066615 <30  
C. OWEN-WM

(TEMPORARY)  
TRADES SPEC IV  
KC40-4  
61066684 <30  
D. RAWLS-WM

ORG UNIT #20005123

CURR COORD II  
CA20-6  
60028302  
B. WATTERS-WF

ADMIN COORD I  
AH10-5  
60028222  
K. WHITE-BF

(TEMPORARY)  
FSO II  
JC70-4  
4 TEMPS

ORG UNIT #21000446

PROG COORD II  
AH40-6  
60028212  
C. BENNETT-WM

(TEMPORARY)  
EDU SPEC  
CA30-4  
61066093 <30  
D. HANSON-WM

(TEMPORARY)  
FSO II  
JC70-4  
1 TEMP

(TEMPORARY)  
EDU SPEC  
CA30-4  
61069607 <30  
Y. MUHAMMAD-B/M

(TEMPORARY)  
EDU SPEC  
CA30-4  
61049997 <30  
N. MANSFIELD-WM

ORG UNIT #21012579

PROG COORD I  
AH35-5  
60028209  
R. SIMPSON

MEDIA RESRC  
SPEC II  
BG60-4  
60028304  
J. BLACK-WM

(TEMPORARY)  
MEDIA SPEC II  
BG60-4  
61061899 >30  
W. RENKIN-WM

(TEMPORARY)  
MEDIA SPEC II  
BG60-4  
61066275 >30  
A. HIGHLAND-BF

(TEMPORARY)  
PRINTING MGR I  
BD30-4  
61065900 >30  
F. BRANDT-WM

REGION 0  
ORG UNIT #20005122

ADMIN COORD I  
AH10-5  
60028217  
S. BUSH-BF

ADMIN ASST  
AA75-4  
60028303  
K. RIVERA-WF

ADMIN ASST  
AA75-4  
60028213  
G. EVANS-BF

REGION)  
ORG UNIT #20005131

FOOD SERV SPEC V  
KB25-5  
60028224  
C. JERMSTAD-WM

BLDG/GRDS SPEC III  
KA15-3  
60028210  
S. WILLIAMS-BM

REGION 1  
ORG UNIT #20005129

PROG COORD I  
AH35-5  
60028221  
D. DUNCAN-WM

ADMIN ASST  
AA75-4  
60028220  
C. BAKER-WF

(TEMPORARY)  
FSO II  
JC70-4  
33 TEMPS

REGION 5  
ORG UNIT #21001228

PROG COORD II  
AH40-6  
60028206  
B. TURNER-WM

ADMIN ASST  
AA75-4  
60028301  
A. WILLIAMSON-WF

(TEMPORARY)  
FSO II  
JC70-4  
20 TEMPS

REGION 6  
ORG UNIT #21011926

PROG COORD I  
AH35-5  
60028307  
M. TURNER-WF

(TEMPORARY)  
FSO II  
JC70-4  
43 TEMPS

REGION 2  
ORG UNIT #21011927

PROG COORD I  
AH35-5  
60028122  
J. MCCARLEY-WM  
EXEM GRV

(TEMPORARY)  
FSO II  
JC70-4  
1 TEMP

REGION 4  
ORG UNIT #20005132

PROG COORD I  
AH35-5  
60028300  
B. CASSIDY-WM  
EXEM GRV

ADMIN ASST  
AA75-4  
60028205  
C. CANUP-WF

(TEMPORARY)  
FSO II  
JC70-4  
27 TEMPS

ORG UNIT #20005130

PROG COORD II  
AH40-6  
60028223  
T. BROWN-BM

PROG COORD I  
AH35-5  
60028200  
D. CROSSLAND-WM  
EXEM GRV

PROG COORD I  
AH35-5  
60028121  
VACANT-09/17/16

(TEMPORARY)  
FSO II  
JC70-4  
18 TEMPS

PROG COORD I  
AH35-5  
60028208  
S. DAVIS-WM

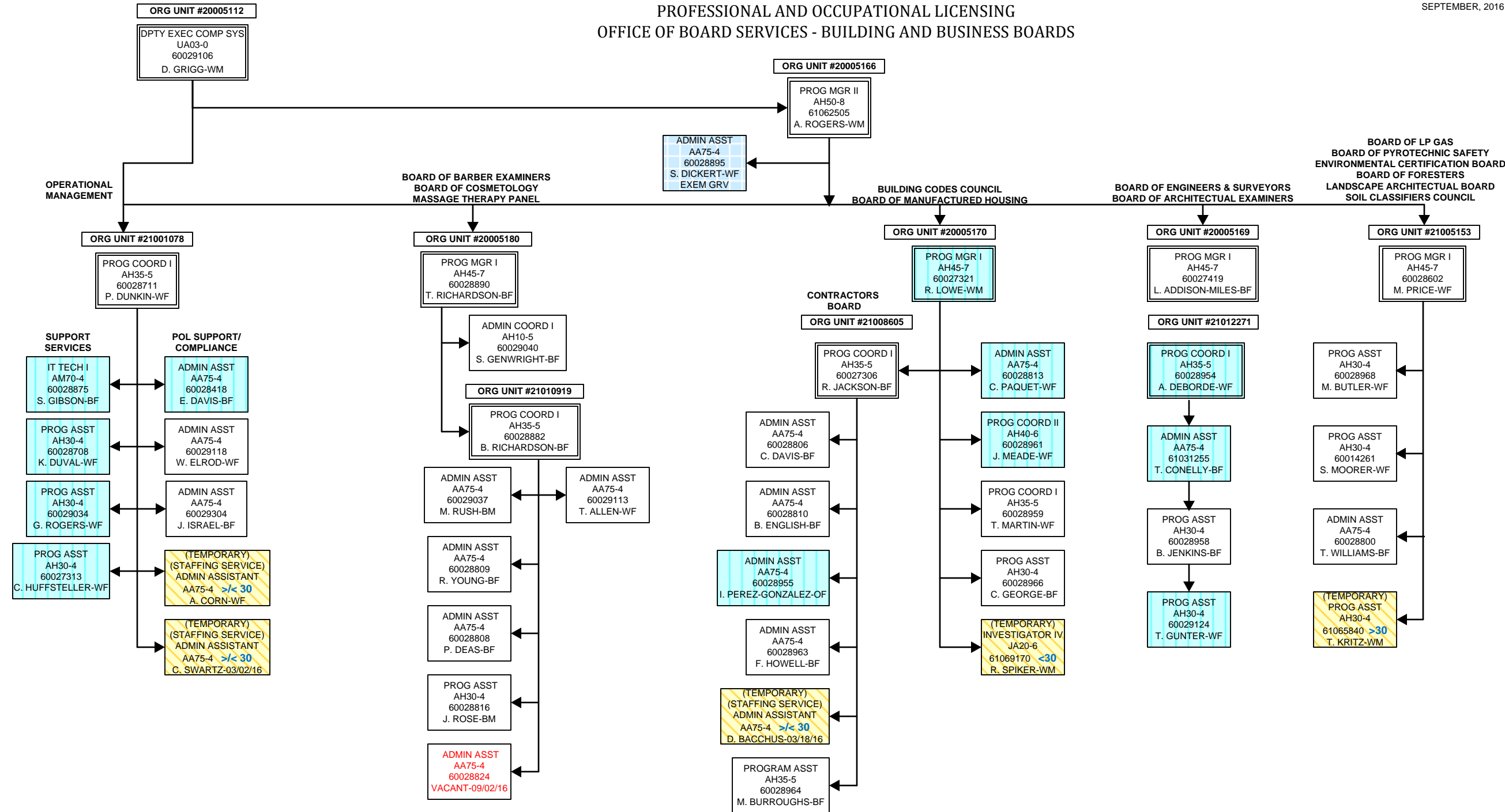
PROG COORD I  
AH35-5  
60028952  
K. WATSON-UN

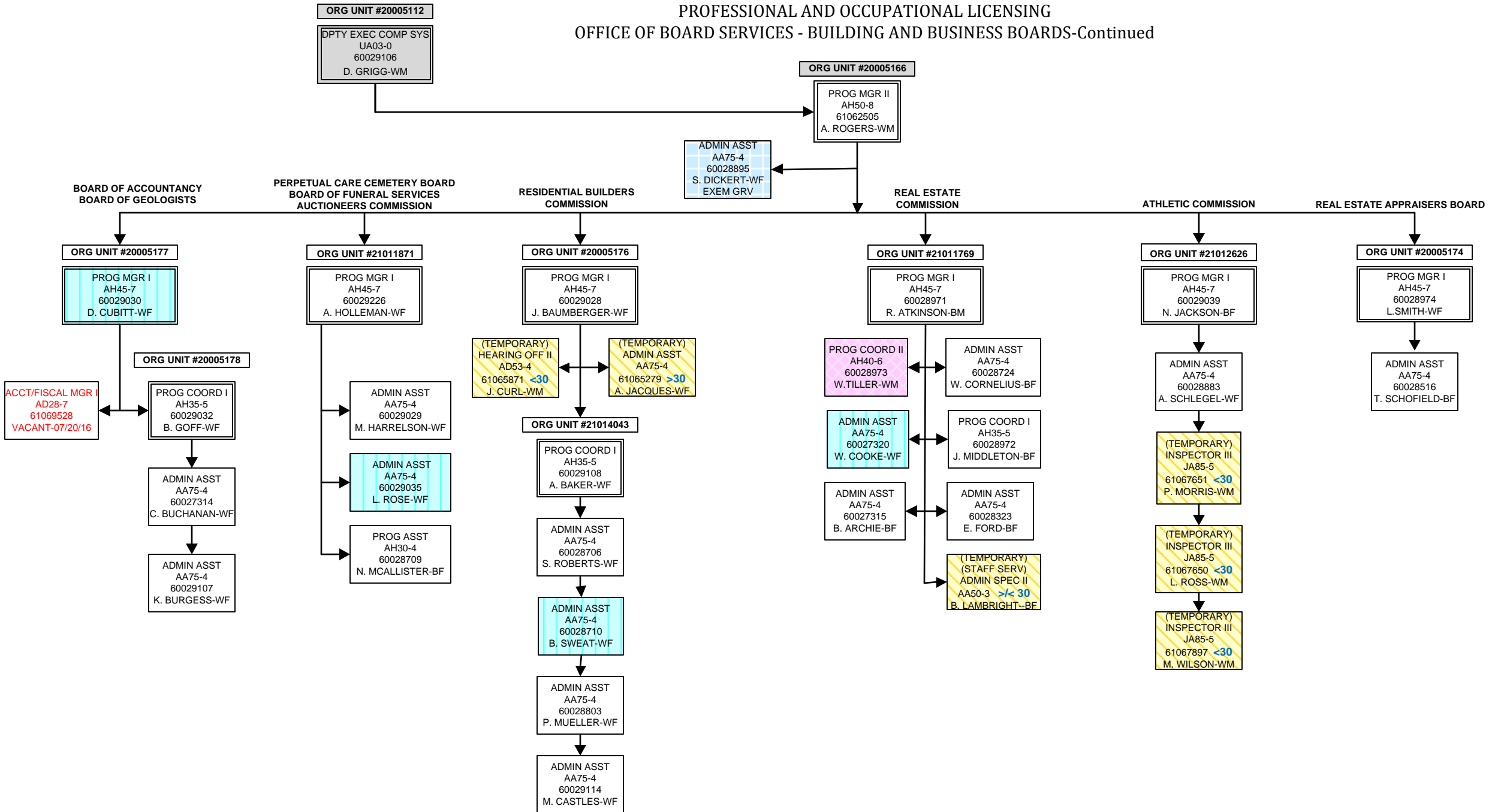
(TEMPORARY)  
FSO II  
JC70-4  
42 TEMPS

ORG UNIT #21009052

PROG COORD I  
AH35-5  
60028124  
M. GEORGE-WM  
EXEM GRV

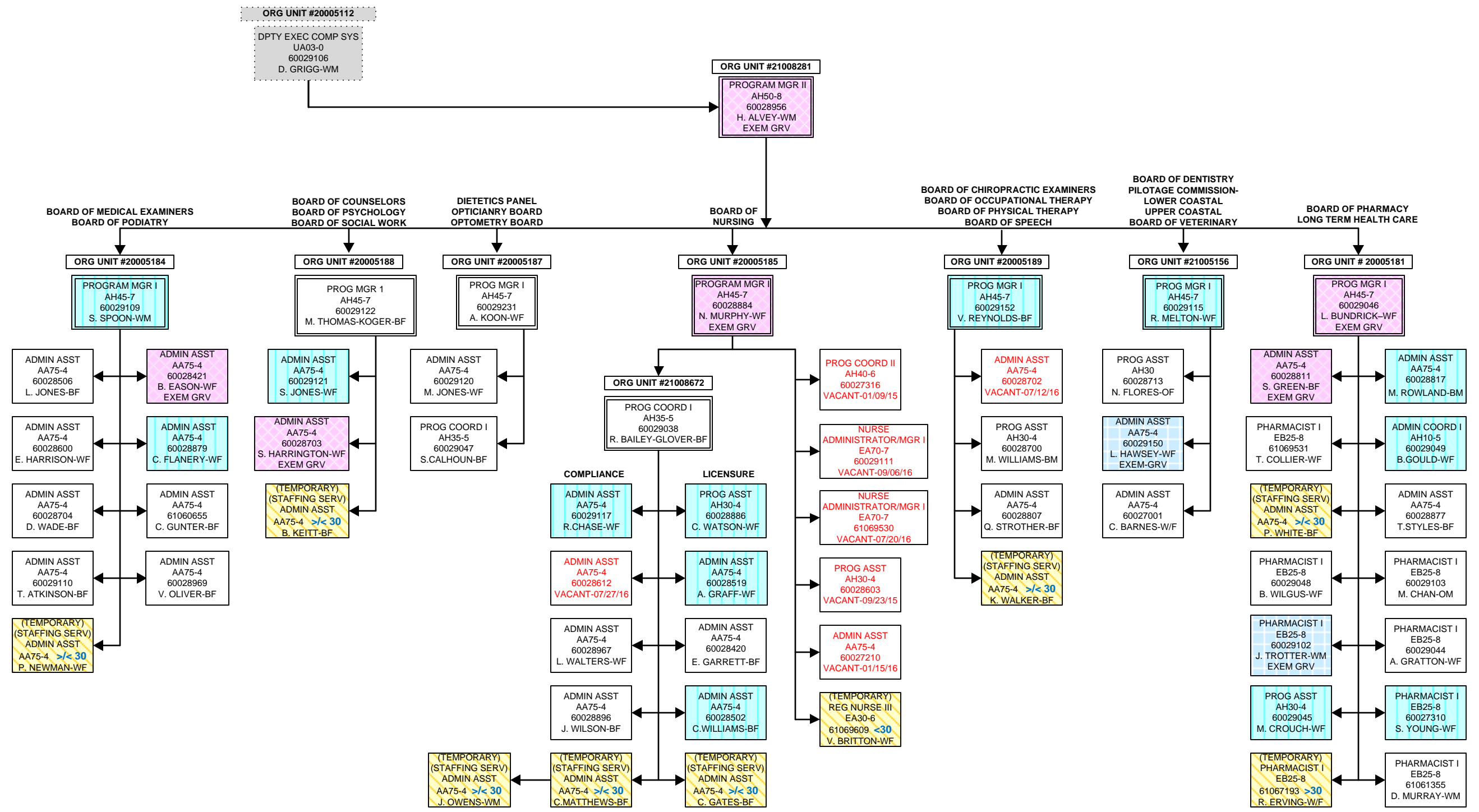
PROFESSIONAL AND OCCUPATIONAL LICENSING  
OFFICE OF BOARD SERVICES - BUILDING AND BUSINESS BOARDS



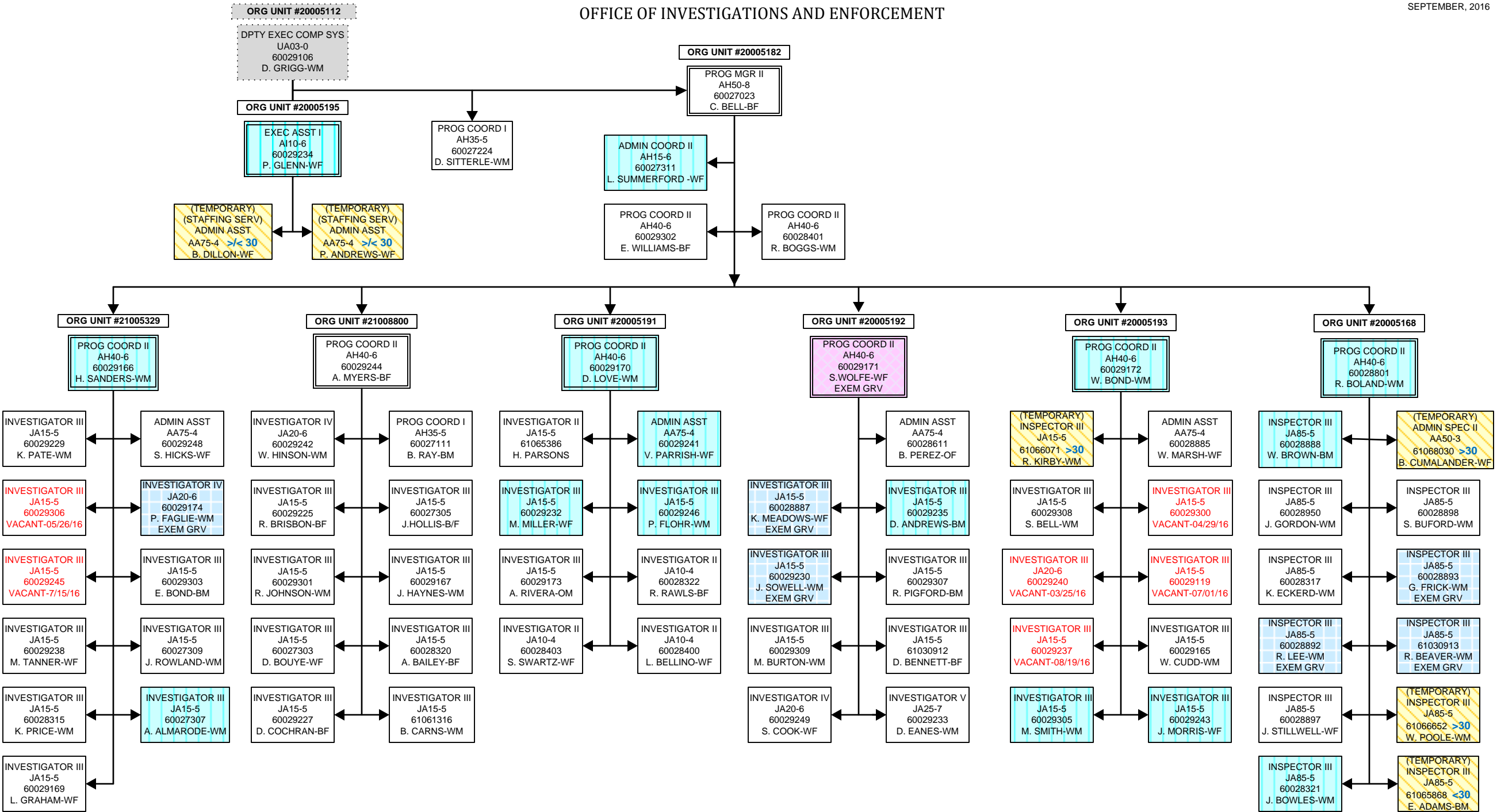




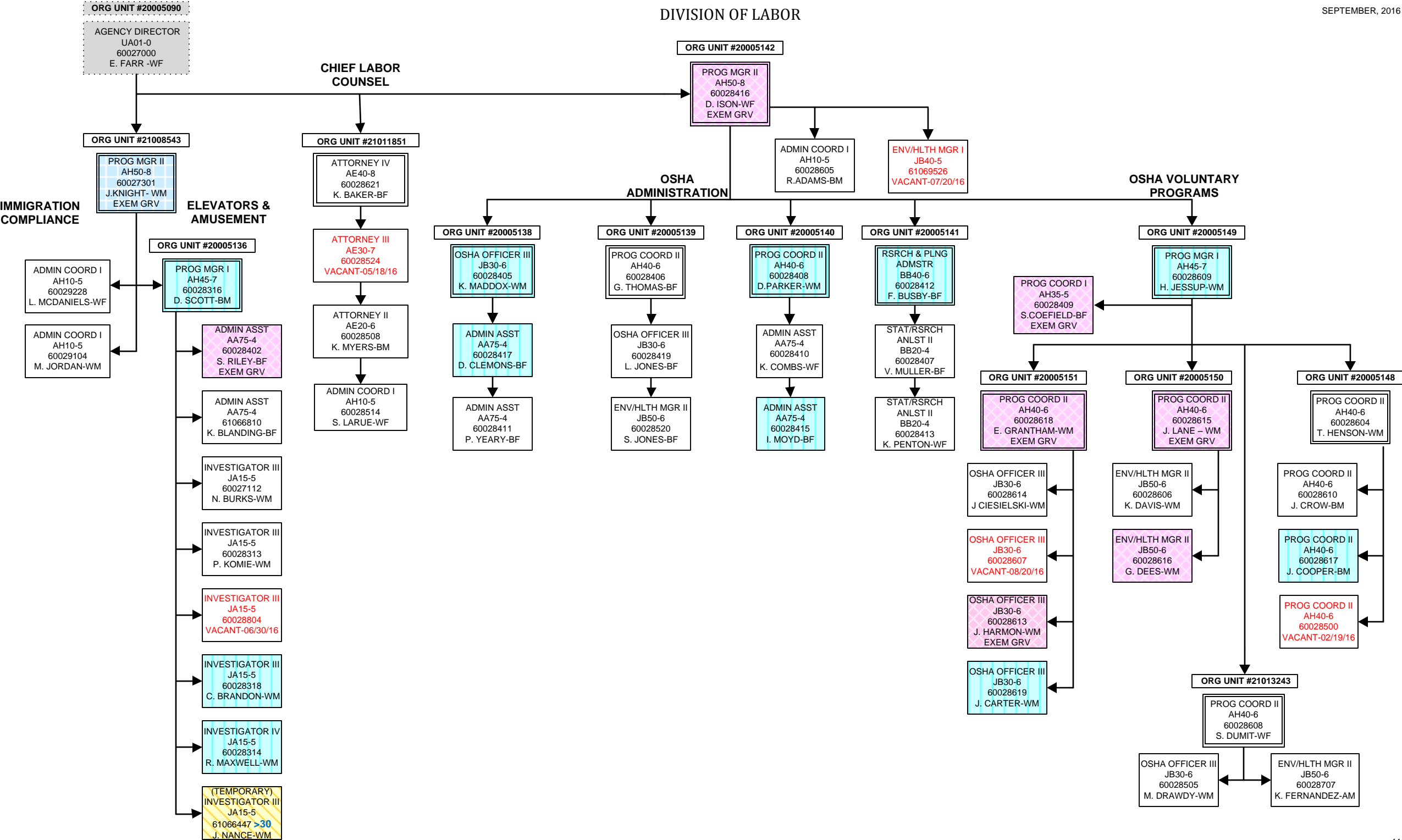
OFFICE OF BOARD SERVICES  
HEALTH AND MEDICALLY RELATED BOARDS



OFFICE OF INVESTIGATIONS AND ENFORCEMENT



DIVISION OF LABOR



DIVISION OF LABOR  
OSHA-COMPLIANCE

